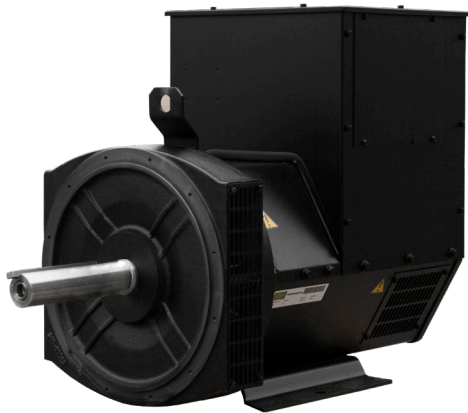


TWO-BEARING GENERATOR ENDS



Cummins

A leader in the generator end industry

Ingress Protection

IP23 protected from objects greater than 12.5mm and spraying water

Automatic Voltage Regulation

Adjusts the excitation level as necessary

Durable Design

Powder coated steel housing

	PI044D	PI044E	PI044F	PI044G	PI044H
WATTS @ 125/40°C					
06 240V 1-PH	7,500	10,000	12,500	15,000	17,500
311 208/240V 3-PH	6,600	8,800	11,000	13,200	15,400
311 480V 3-PH	7,500	10,000	12,500	15,000	17,500
AVR with EBS	AS480	AS480	AS480	AS480	AS480
VOLTAGE REGULATION	+/- 1%	+/- 1%	+/- 1%	+/- 1%	+/- 1%
TERMINALS					
06	4	4	4	4	4
311	12	12	12	12	12
STATOR WINDING					
SINGLE LAYER CONCENTRIC	06	06	06	06	06
DOUBLE LAYER CONCENTRIC	311	311	311	311	311
WINDING PITCH	2/3	2/3	2/3	2/3	2/3
INSULATION	CLASS H	CLASS H	CLASS H	CLASS H	CLASS H
INGRESS PROTECTION	IP23	IP23	IP23	IP23	IP23

SPECIFICATIONS

	PI144D	PI144E	PI144F	PI144G	PI144H	PI144J
WATTS @ 125/40°C						
06 240V 1-PH, 1.0 PF	21,000	25,000	27,500	30,000	35,000	40,000
311 208/240V 3-PH, 0.8 PF	17,600	22,000	24,200	26,400	30,800	35,200
311 480V 3-PH, 0.8 PF	20,000	25,000	27,500	30,000	35,000	40,000
AVR with EBS	AS480	AS480	AS480	AS480	AS480	AS480
VOLTAGE REGULATION	+/- 1%	+/- 1%	+/- 1%	+/- 1%	+/- 1%	+/-
TERMINALS						
06	4	4	4	4	4	4
311	12	12	12	12	12	12
STATOR WINDING						
SINGLE LAYER CONCENTRIC	06	06	06	06	06	06
DOUBLE LAYER CONCENTRIC	311	311	311	311	311	311
WINDING PITCH	2/3	2/3	2/3	2/3	2/3	2/3
INSULATION	CLASS H	CLASS H	CLASS H	CLASS H	CLASS H	CLASS H
INGRESS PROTECTION	IP23	IP23	IP23	IP23	IP23	IP23

	UCI224C	UCI224D	UCI224E	UCI224F	UCI224G
WATTS @ 125/40°C					
06 240V 1-PH, 1.0 PF	37,500	44,000	50,000	60,000	75,000
311 208/240V 3-PH, 0.8 PF	40,000	48,000	54,000	67,000	75,000
311 480V 3-PH, 0.8 PF	44,000	52,000	60,000	75,000	83,000
AVR - SELF EXCITED	AS440	AS440	AS440	AS440	AS440
VOLTAGE REGULATION	+/- 1%	+/- 1%	+/- 1%	+/- 1%	+/- 1%
TERMINALS					
06	4	4	4	4	4
311	12	12	12	12	12
STATOR WINDING					
SINGLE LAYER CONCENTRIC	06	06	06	06	06
DOUBLE LAYER CONCENTRIC	311	311	311	311	311
WINDING PITCH	2/3	2/3	2/3	2/3	2/3
INSULATION	CLASS H	CLASS H	CLASS H	CLASS H	CLASS H
INGRESS PROTECTION	IP23	IP23	IP23	IP23	IP23

SPECIFICATIONS

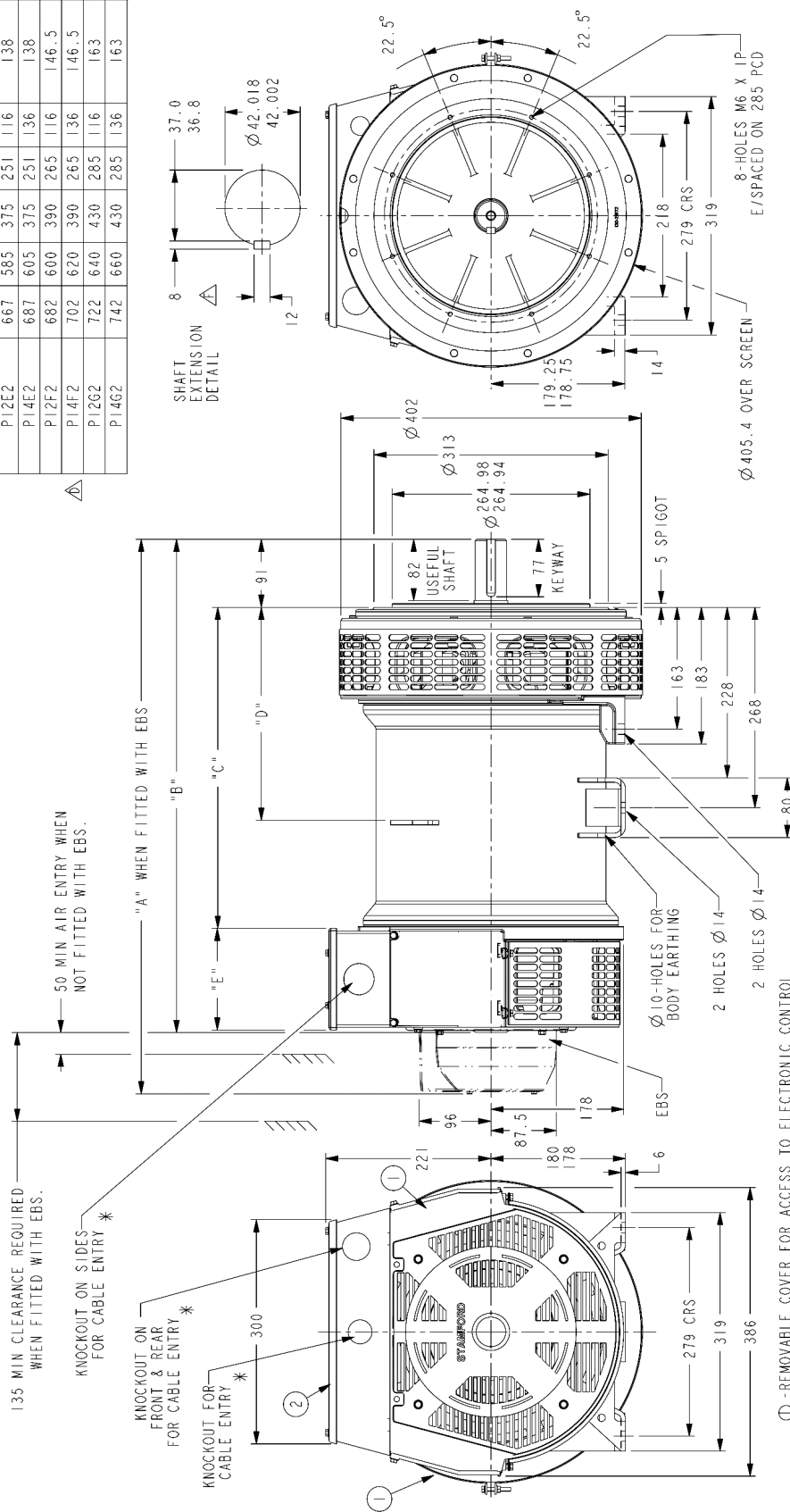
	UCI274C	UCI274D	UCI274E	UCI274F	UCI274G
WATTS @ 125/40°C					
06 240V 1-PH, 1.0 PF	90,000	100,000	115,000	135,000	150,000
311 208/240V 3-PH, 0.8 PF	90,000	105,000	128,000	145,000	164,000
311 480V 3-PH, 0.8 PF	100,000	117,000	143,000	165,000	185,100
AVR - SELF EXCITED	AS440	AS440	AS440	AS440	AS440
VOLTAGE REGULATION	+/- 1%	+/- 1%	+/- 1%	+/- 1%	+/- 1%
TERMINALS					
06	4	4	4	4	4
311	12	12	12	12	12
STATOR WINDING					
SINGLE LAYER CONCENTRIC	06	06	06	06	06
DOUBLE LAYER CONCENTRIC	311	311	311	311	311
WINDING PITCH	2/3	2/3	2/3	2/3	2/3
INSULATION	CLASS H	CLASS H	CLASS H	CLASS H	CLASS H
INGRESS PROTECTION	IP23	IP23	IP23	IP23	IP23

DRAWINGS

PI144D/E/F/G

DIMENSIONS IN MM

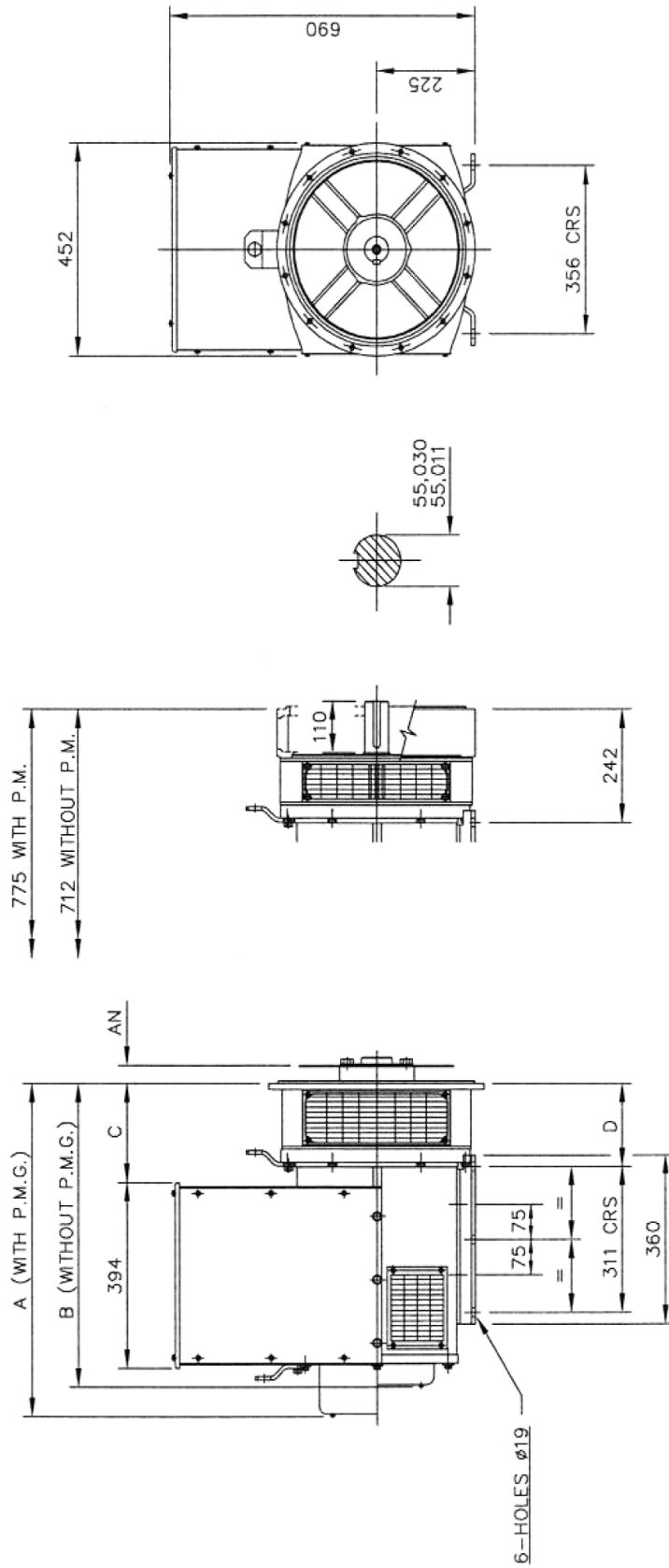
DIMENSIONS					
FRAME	"A"	"B"	"C"	"D"	"E" NETT WT. (Kg)
PI14D2 / PI2D2	642	560	350	240	116
PI2E2	667	585	375	251	116
PI4E2	687	605	375	251	138
PI2F2	682	600	390	265	116
PI4F2	702	620	390	265	136
PI2G2	722	640	430	285	116
PI4G2	742	660	430	285	136



DRAWINGS

UCI224C/D/E/F/G

DIMENSIONS IN MM



ADAPTOR	SINGLE BEARING MACHINES ONLY			
	A	B	C	D
SAE 1	724,3	661,3	224,3	191,3
SAE 2	710	647	210	177
SAE 3	710	647	210	177
SAE 4	710	647	210	177

COUPLING DISCS		AN
SAE 8		61,90
SAE 10		53,98
SAE 11,5		39,68
SAE 14		25,40

