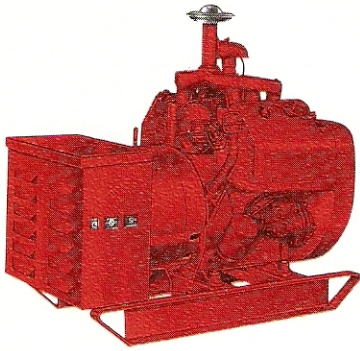


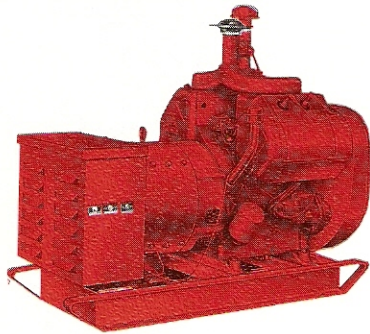
# GEN ELECTRIC PLANTS — PORTABLE — STANDBY

## Model GR10W4-C



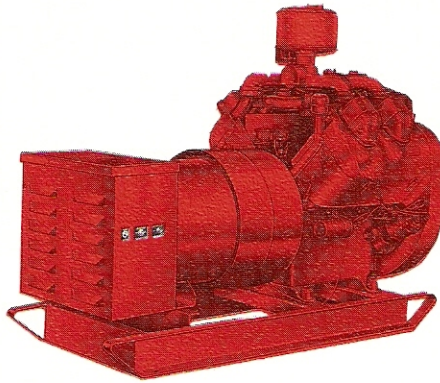
Efficient - versatile. **Alternator:** Rotating armature, 4 pole, static excitation, 5% voltage regulation, drip proof construction. **Engine:** 22.5 H.P. cast iron, heavy duty, 4 cycle, 4 cylinder with tapered roller bearings. **Standard Equipment:** Fuel Pump, Automatic Choke, Instruction Manual, Terminal Block, Main Line Circuit Breaker.

## Model GR15W4-C

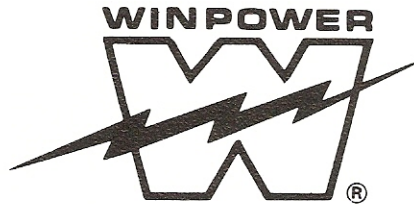
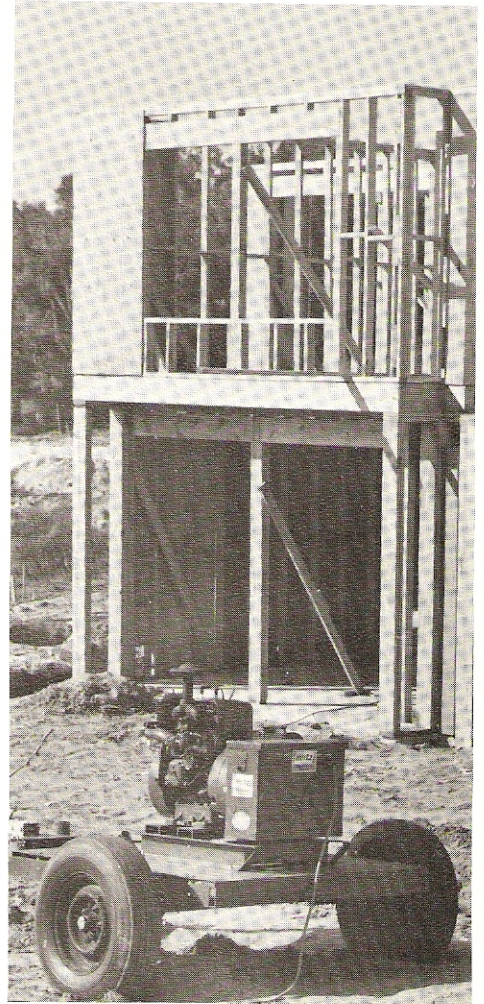


Dependable - high performance. **Alternator:** Rotating armature, 4 pole, static excitation, 5% voltage regulation, drip proof construction. **Engine:** 32 H.P. cast iron, heavy duty, 4 cycle, 4 cylinder with tapered roller bearings. **Standard Equipment:** Fuel Pump, Automatic Choke, Instruction Manual, Terminal Block, Main Line Circuit Breaker.

## Model GR20W4-C



Heavy duty - rugged - compact. **Alternator:** Rotating armature, 4 pole, static excitation, 5% voltage regulation, drip proof construction. **Engine:** 45.6 H.P. cast iron, heavy duty, 4 cycle, 4 cylinder with tapered roller bearings. **Standard Equipment:** Fuel Pump, Automatic Choke, Instruction Manual, Terminal Block, High Temperature Shutdown, Main Line Circuit Breaker.



### MODEL SELECTION

#### 60 CYCLE — 1800 R.P.M. — AIR COOLED

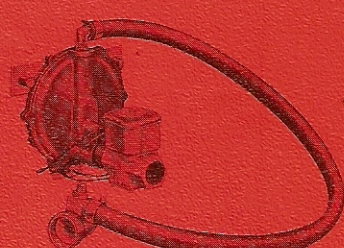
MODEL	WATTS		VOLTS	AMPS		PHASE	WIRE	STARTING
	Inter.	Cont.		Max.	Cont.			
GR10W4-C	12,500	10,000	120/240	52	41.6	1	3	Remote
GR10W4-D	12,500	10,000	120/208	43.5	34.8	3	4	Remote
GR15W4-C	17,500	15,000	120/240	73	62.5	1	3	Remote
GR15W4-D	17,500	15,000	120/208	61	52	3	4	Remote
GR20W4-C	25,000	20,000	120/240	104	83.3	1	3	Remote
GR20W4-D	25,000	20,000	120/208	87	69.5	3	4	Remote



LOW OIL SHUT-OFF SWITCH



LPG GAS CARBURETOR & SOLENOID VALVE



NATURAL GAS CARBURETOR & SOLENOID VALVE



G-5700  
HEAVY DUTY 2-WHEEL DOLLY  
700 LB. CAPACITY