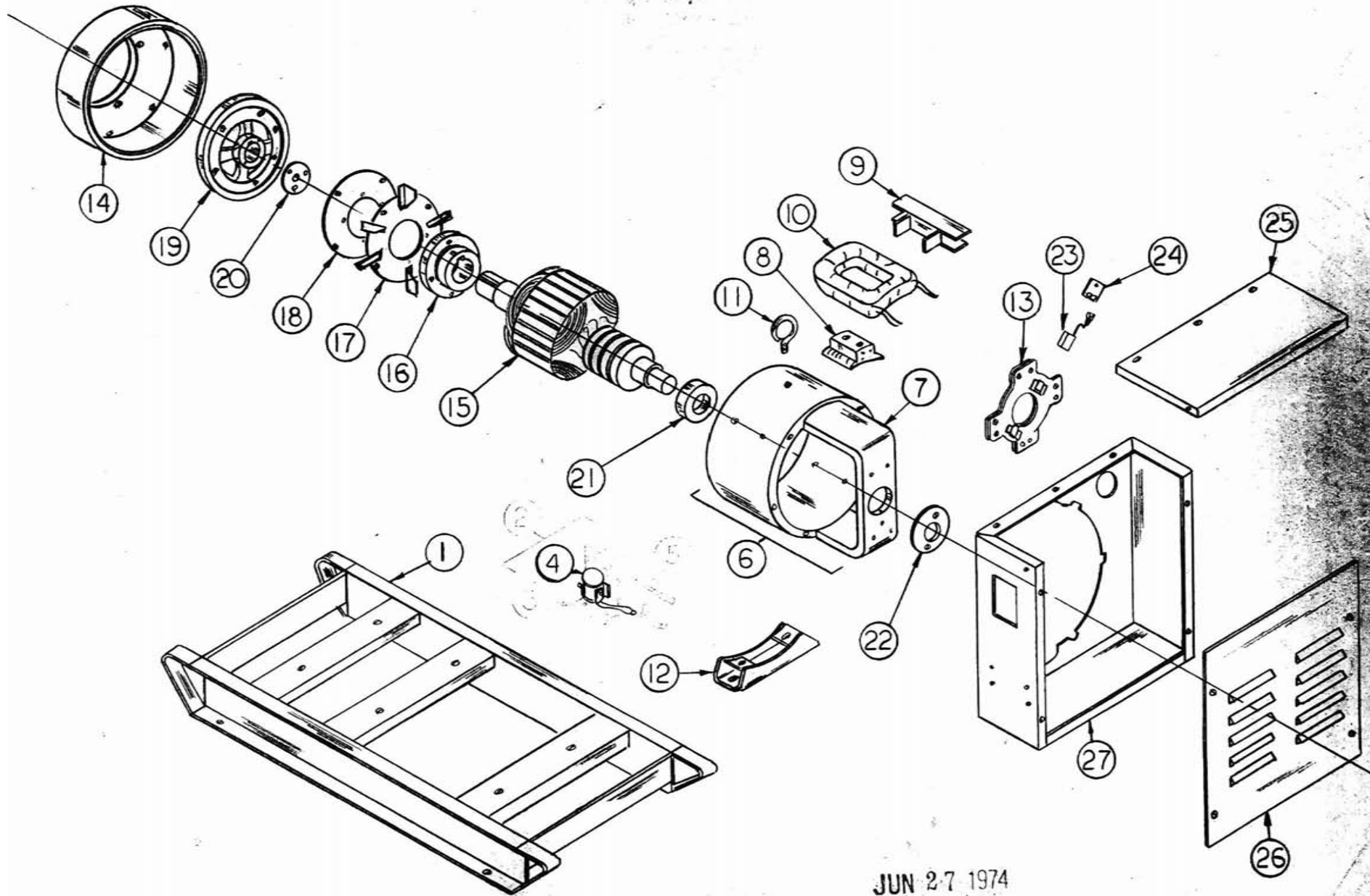


		MODEL GR15W4-C/10		GR15W4-C/10N		GR15W4-C/10VL		GR15W4-C/10VH	
		TYPE 3		3		3		3	
REF.	DESCRIPTION	PART NO.	QTY.	PART NO.	QTY	PART NO.	QTY	PART NO.	QTY
N.S.	Engine, Wisc. VG4D	EC-12601	1						
1	Skid	G-6498	1						
2	Not Applicable								
3	Not Applicable								
4	Solenoid	EE-1201	1						
5	Not Applicable								
6	Field Frame Assembly	G-6322	1						
7	Field Frame	G-4775-2	1						
8	Field Pole Assembly	G-4777-1	4						
9	Coil Shield	J-528-1	8						
10	Field Coil	H-1134	4						
11	Lift Ring	S-859	1						
12	Generator Support	G-5225	1						
13	Brush Gear Assembly	G-5487	1						
14	Drive End Bell	I-803	1						
15	Armature Assembly	G-7452-28	1						
16	Coupling Hub	I-794	1						
17	Fan Assembly	G-5249	1						
18	Coupling Disc	S-4872	1						
19	Adapter Coupling	I-804	1						
20	Retaining Washer	S-5287	1						
21	Bearing	D-4-1	1						
22	Bearing Retainer	W-43	1						
23	Brush	Y-51	6						
24	Brush Spring	G-3422	6						
25	Panel Top	S-7623	1						
26	Panel Front	S-6103-6	1						
27	Panel Back Assembly	G-7885	1						
N.S.	Gaseous Conversion Kit	N.A.		G-4711-5	1	G-4731-1	1	G-4731	1
N.S.	Solenoid Valve	N.A.		EE-1152	1	EE-1152	1	EE-1152	1
N.S.	Vacuum Switch	N.A.		EN-2302	1	EN-2302	1	EN-2302	1
N.S.	Air Horn Adapter	N.A.		EN-2687	1	EN-2687	1	EN-2687	1
N.S.	Regulator	N.A.		EN-2705	1	EN-2705	1	EN-2705	1
N.S.	High Press. Regulator	N.A.		N.A.		N.A.		EN-2627	1
N.S.	Low Press. Regulator	N.A.		N.A.		EN-2680	1	N.A.	

Wiring Diagram IF-5622
Parts Drawing IE-8558, IE-10796

Note: Part numbers and quantities are the same in all columns, except as noted.

IE-8558



JUL 25 1977

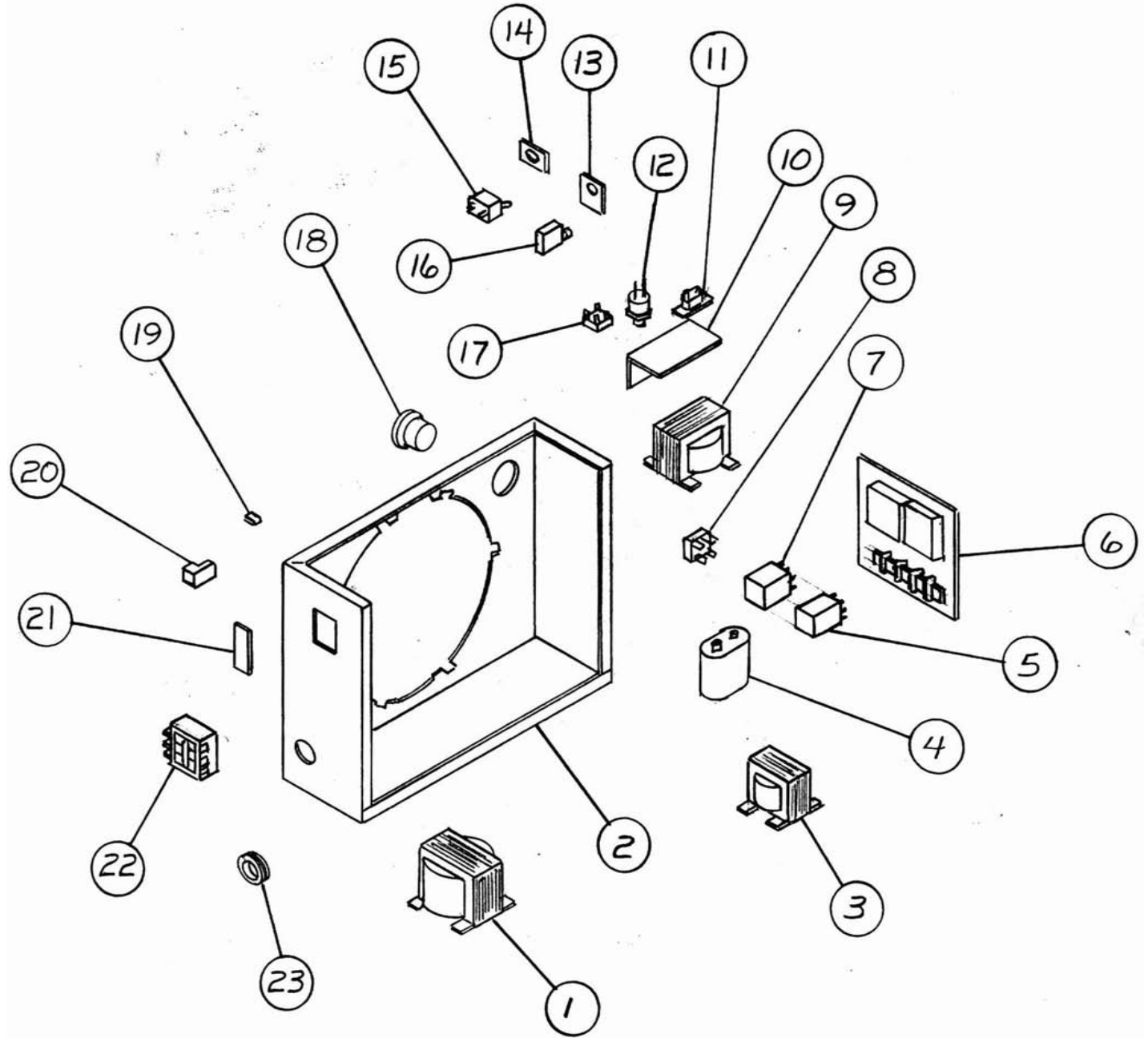
JUN 27 1974

IE-8558

		PANEL ASSEMBLY G-7885	
REF.	DESCRIPTION	PART NO.	QTY.
1	Transformer	EE-1981	1
2	Panel Weldment	G-5838-40	1
3	Choke	EE-1982	1
4	Not Applicable		
5	Relay, 5 Amp	EE-1220	1
6	Module Assembly, Engine Control (A)	G-7212-10	1
7	Relay, 10 Amp	EE-1207-3	1
8	Rectifier	EE-2214	1
9	Transformer-Battery Charger	EE-2271-1	1
10	Bracket	S-9285	1
11	Circuit Breaker-Battery Charger	EE-1877	1
12	Rectifier Assembly	EE-2207	1
13	Nameplate	Z-2530	1
14	Nameplate	Z-2470	1
15	Switch	EE-181	1
16	Circuit Breaker-Engine	EE-2800	1
17	Rectifier	EE-2214	1
18	Ammeter	AM-100	1
19	Not Applicable		
20	Ground Lug	EE-1671	3
21	Mounting Plate	S-5027-1	1
22	Circuit Breaker-Main	EE-2809-11	1
23	Grommet	6100	1

(A) Was G-7212 4-10-84 GRS

PL-2424
(Sheet 2 of 2)



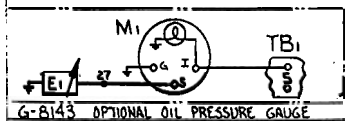
NOTICE: THIS DOCUMENT IS CONFIDENTIAL AND IS THE PROPERTY OF WINPOWER CORPORATION, NEWTON, IA. IT MUST NOT BE USED IN ANY WAY DETRIMENTAL TO OUR INTEREST. REPRODUCTION OF ITS CONTENT BY ANY MEANS OR IN ANY FORM WITHOUT EXPRESS PERMISSION OF THE WINPOWER MANAGEMENT IS PROHIBITED.

ENGINE PARTS LIST

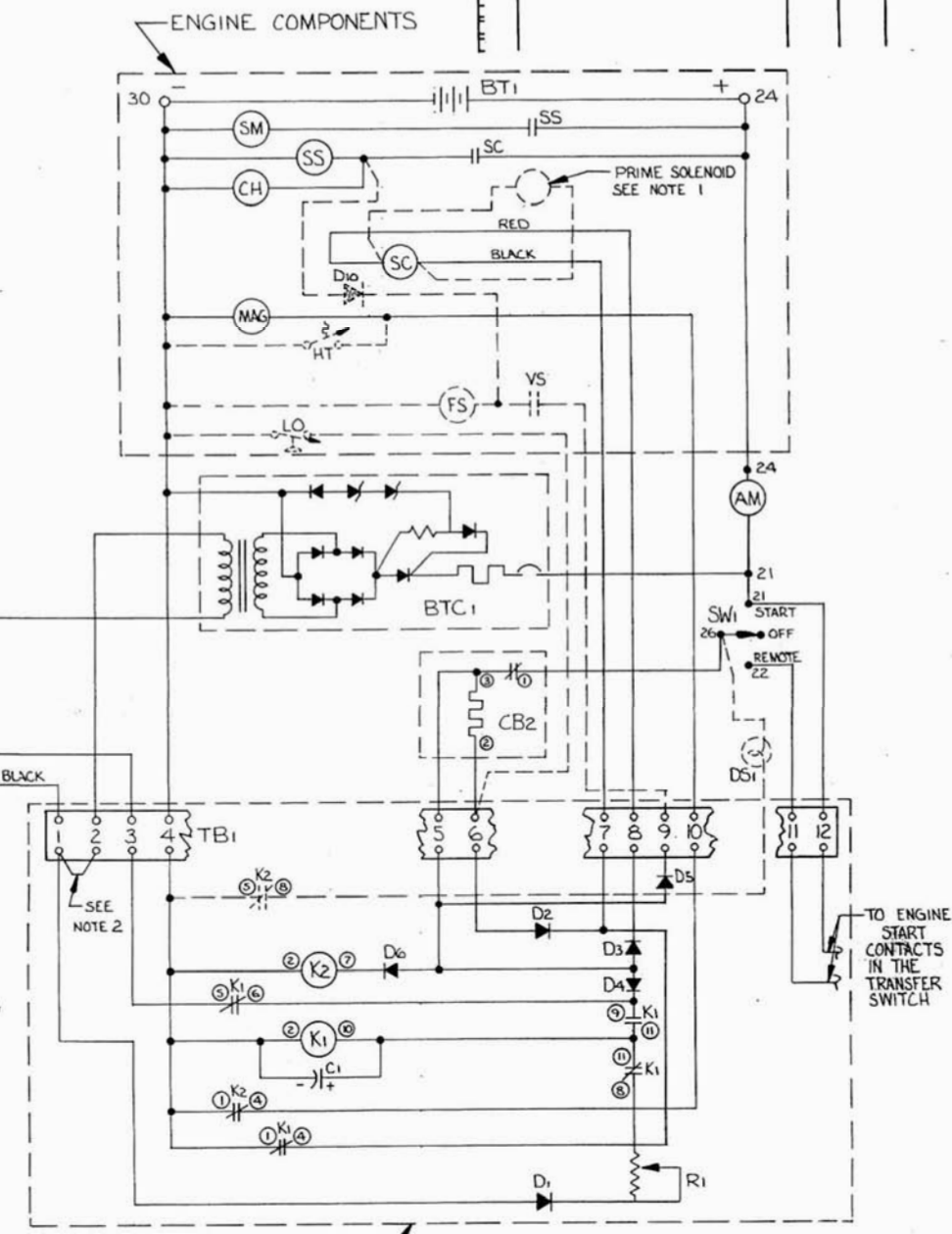
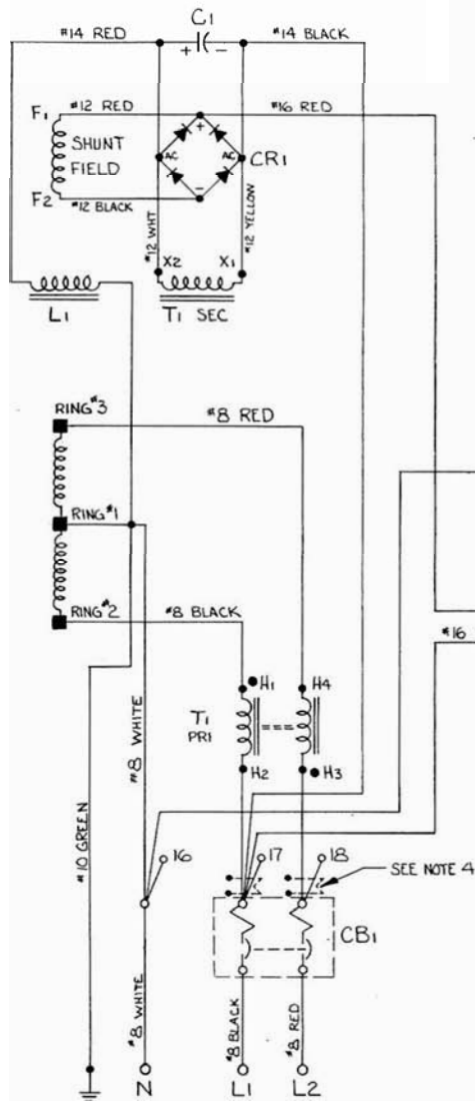
REF. NO.	PART NO.	DESCRIPTION
BT1	VARIOUS	BATTERY
CH	SUPP. WITH ENGINE	ELECT. CHOKE
FS	EE-1152	FUEL SOLENOID
HT	SUPP. WITH ENGINE	HIGH TEMPERATURE SHUT DOWN
LO	EN-2587	LOW OIL PRESSURE SHUT DOWN
MAG	SUPP. WITH ENGINE	MAGNETO
SC	EE-1201	START CONTACTOR
SM	SUPP. WITH ENGINE	START MOTOR
VS	EN-2302	VACUUM SWITCH
SS	SUPP. WITH ENGINE	START SOLENOID
D10	G-7879	BLOCKING DIODE
E1	OP-42	SENDER - OIL PRESSURE (OPTIONAL)

CONTROL PANEL PARTS LIST

AM	AM-100	AMMETER 10-0-10 DC
BTC1	G-7219-10	BATTERY CHARGER
C1	EE-1539	CAPACITOR
CB1	EE-2809-11	CIRCUIT BREAKER 2P-70A
CB2	EE-2800	OVERCRANK BREAKER
CR1	EE-2214	RECTIFIER ASSY
D1, D2, D6	N.A.	DIODE
D3, D4, D5	N.A.	SILICON RECTIFIER
DS1	G-7611	FAULT LIGHT (OPTIONAL)
K1	EE-1220	RELAY - CRANKING TERMINATION
K2	EE-1207-3	RELAY - START, STOP
L1	EE-1982	CHOKE
R1	R-210	RESISTOR
SW1	EE-181	SWITCH - ENGINE START
T1	EE-1981	TRANSFORMER
TB1	EE-660	TERMINAL BOARD
M1	OP-41	GAUGE - OIL PRESSURE (OPTIONAL)



SYMBOLS		MATERIAL	DO NOT SCALE
PARALLELISM	⊕ POSITION	DRAWN BY GRS	PROJ ENG
○ ROUNDNESS	⊕ SYMMETRY	MICROFILM DATE	
- STRAIGHT	⊙ CONCENTRICITY		
▭ FLATNESS	∠ ANGULARITY	TOLERANCE ON DIMENSIONS NOT OTHERWISE SPECIFIED	DECIMAL ± FRACTIONAL ± ANGULAR ±
⊥ PERPENDICULARITY			



REVISIONS				
LT#	DESCRIPTION	DATE	BY	APPROVED

- NOTES:
- 1.) ONLY REQ'D ON NATURAL GAS AND VAPOR LPG MODELS.
 - 2.) CAUTION! FOR CONTINUOUS CHARGE REMOVE JUMPER AND CONNECT #2 ON TB1 TO L1 ON THE LOAD SIDE OF THE TRANSFER SWITCH.
 - 3.) MODULE G-7212/D15 USED ONLY ON ENGINES WITH MAGNETO.
 - 4.) CURRENT TRANSFORMERS REQ'D WITH OPTIONAL METER PANEL.
 - 5.) WIRING DIAGRAM FOR G-7212/MODULE IS 1E-1076B-10

REF	PART NO.	QTY	DESCRIPTION
PARTS LIST			
WINPOWER CORPORATION NEWTON, IOWA 50206			
TITLE WIRING DIAGRAM			
GR15W4-C/10		PART NO. 1F-5622	SIZE C REV
ASSY BUILD NO.		SCALE ~	DATE 13 OCT 83 SHEET