

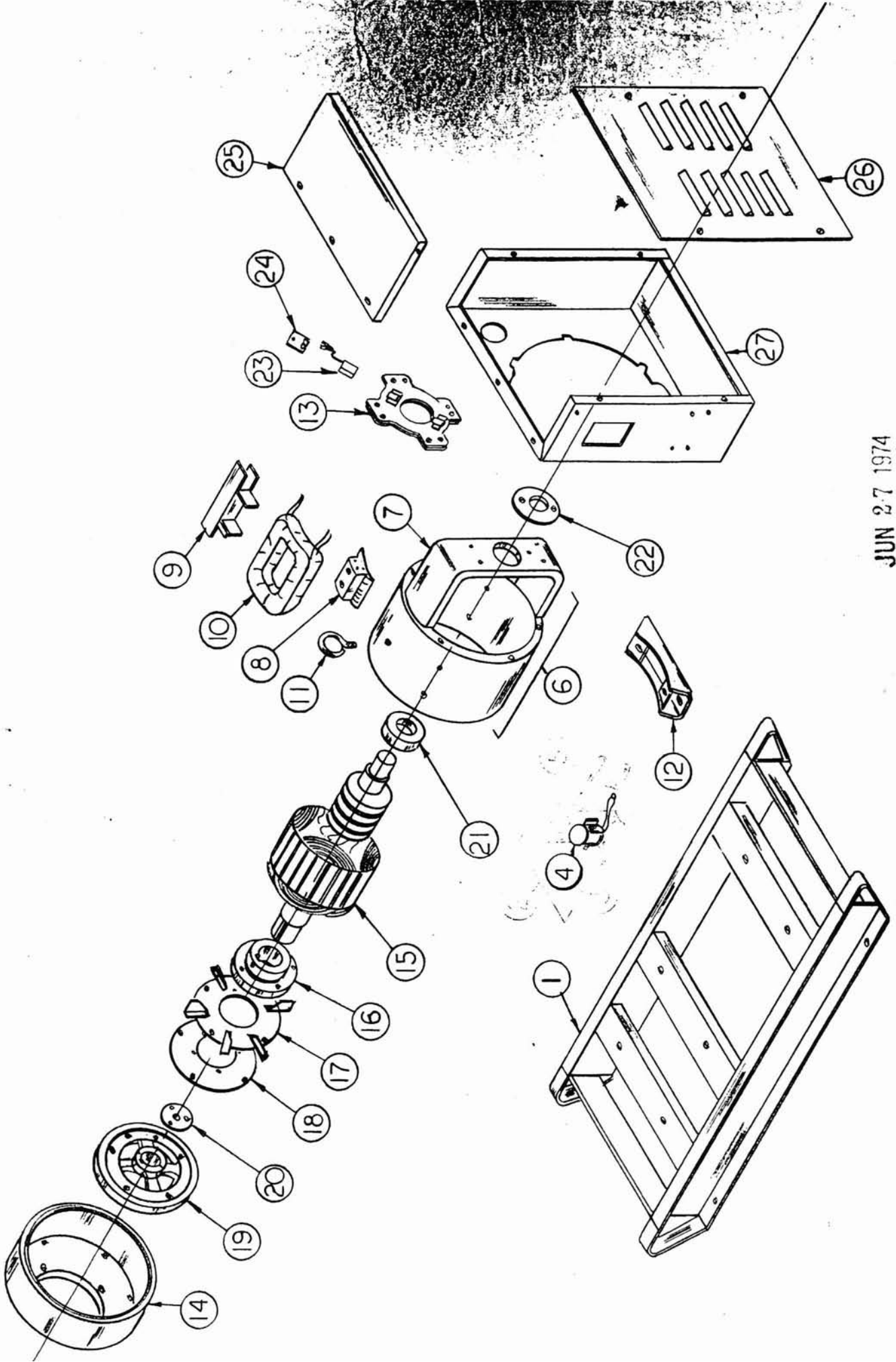
NO.	PART DESCRIPTION	MODEL GR10W4-C/10 TYPE 1		MODEL GR10W4-C/10N TYPE 1		MODEL GR10W4-C/10VL TYPE 1		MODEL GR10W4-C/10V TYPE 1	
		PART NO.	REQ'D UNIT	PART NO.	REQ'D UNIT	PART NO.	REQ'D UNIT	PART NO.	REQ'D UNIT
N.S.	Engine, Wisc. VH4D	EC-12501	1						
1	Skid	G-5105							
2	N.A.								
3	N.A.								
4	Solenoid	EE-1201	1						
5	Battery Cables	EN-747	2						
6	Field Frame Assembly	G-5250	1						
7	Field Frame	G-5247	1						
8	Field Pole Assembly	G-4309	4						
9	Coil Shield	J-460	8						
10	Field Coil	H-917	4						
11	Lift Ring	S-859	1						
12	Generator Support	G-5225	1						
13	Brush Gear Assembly	G-5487	1						
14	Drive End Bell	I-838							
15	Armature Assembly	G-7452-39(A)	1						
16	Coupling Hub	I-794	1						
17	Fan Assembly	G-5249	1						
18	Coupling Disc	S-4872	1						
19	Adapter Coupling	I-793	1						
20	Retaining Washer	S-5287	1						
21	Bearing	D-8	1						
22	Bearing Retainer	W-43	1						
23	Brush	Y-51	6						
24	Brush Spring	G-3422	6						
25	Panel Top	S-7623	1						
26	Panel Front	S-6103-7	1						
27	Panel Back Assembly	G-5228-86	1						
N.S.	Conversion Kit	N.A.		G-4711-7	1	G-4731-7	1	G-4712-7	1
N.S.	*Solenoid Valve	N.A.		EE-1152	1	EE-1152	1	EE-1152	1
N.S.	*Regulator	N.A.		EN-2705	1	EN-2705	1	EN-2705	1
N.S.	*Air Horn	N.A.		EN-2668	1	EN-2668	1	EN-2668	1
N.S.	*Low Pressure Regulator	N.A.		N.A.		EN-2680	1	N.A.	
N.S.	*High Pressure Regulator	N.A.		N.A.		N.A.		EN-2621	1
N.S.	Vacuum Switch	N.A.		EN-2302	1	EN-2302	1	EN-2302	1

Wiring Dia. IF-5289 Last Rev. None
Parts Drawing IE-8558; IE-10796

Note Part Numbers and quantity are the same in all columns but the exceptions
*Parts that are in the conversion kit.

(A) Was G-5246 1-9-84 M.E.

IE 8558



JUN 27 1974

JUL 25 1977

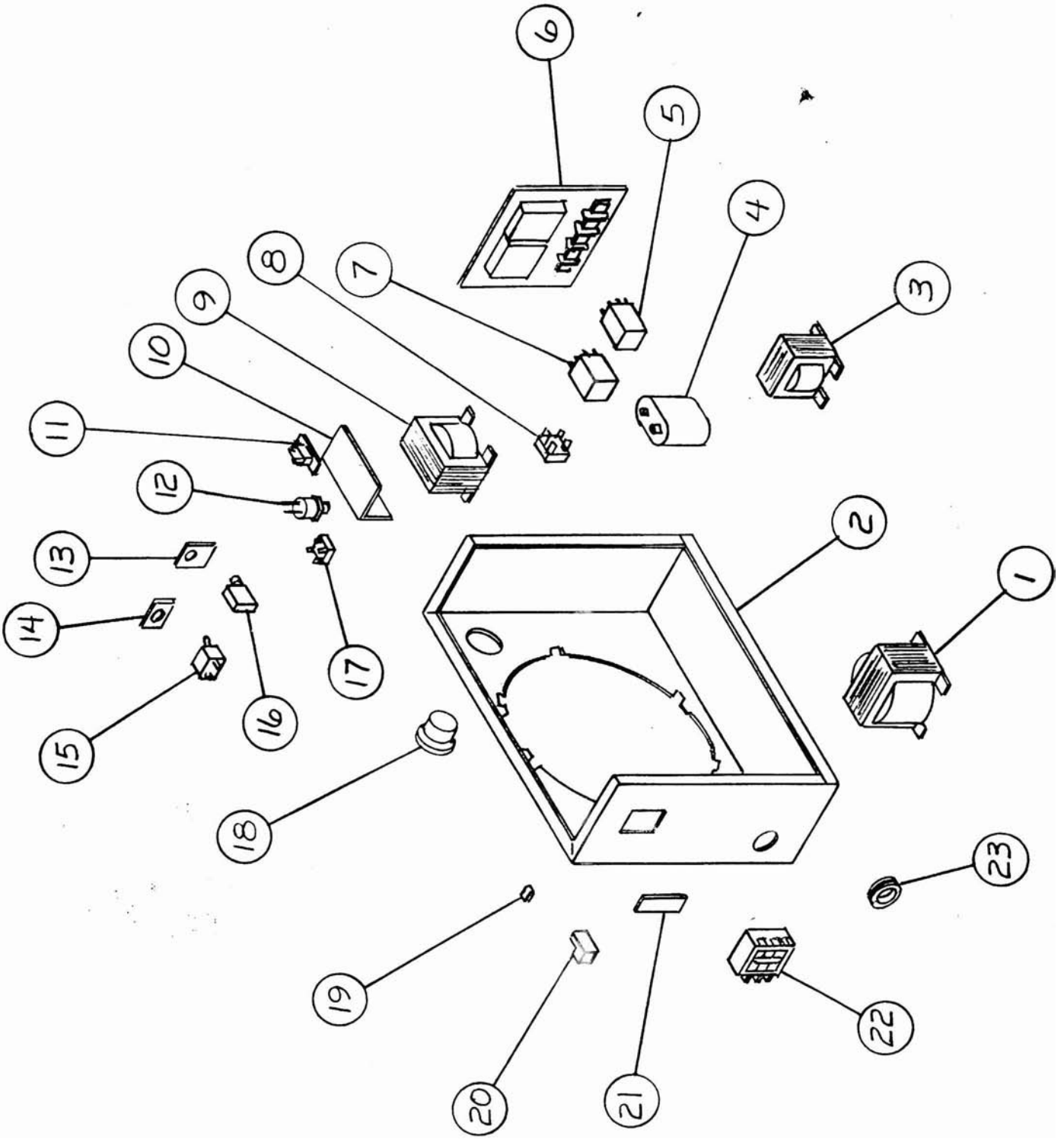
MODEL G-5228-86
TYPE 1

REF. NO.	PART DESCRIPTION	PART NO.	REQ'D UNIT
1	Transformer	EE-2045 (c)	1
2	Panel Weldment	G-5838-40 (a)	1
3	Choke	EE-4254 (e)	1
4	Capacitor	EE-1548 (d)(f)	1
5	Relay, 5 Amp	EE-1220	1
6	Module Assembly, Engine Control	G-7212-10 (b)	1
7	Relay, 10 Amp	EE-1207-3	1
8	Rectifier	EE-2214	1
9	Transformer-Battery Charger	EE-2271-1	1
10	Bracket	S-9285	1
11	Circuit Breaker-Battery Charger	EE-1877	1
12	Rectifier Assembly	G-7220	1
13	Nameplate	Z-2530	1
14	Nameplate	Z-2470	1
15	Switch	EE-181	1
16	Circuit Breaker-Engine	EE-2800	1
17	Rectifier	EE-2214	1
18	Ammeter	AM-100	1
19	Tinnerman	4957	9
20	Ground Lug	EE-1671	3
21	Mounting Plate	S-5027-1	1
22	Circuit Breaker-Main	EE-1805	1
23	Grommet	6100	1

Wiring Diagram IF-5289
Parts Drawing IE-10796

- (a) Was G-5838-24 1-5-84 M.E.
- (b) Was G-7212 4-10-84 G.S.
- (c) Was EE-972 1-31-84 M.E.
- (d) Was None 1-31-84 M.E.
- (e) Was EE-2063 7-8-85 G.S.
- (f) Was EE-1551 7-8-85 G.S.

PL-1972 (Page 2 of 2)

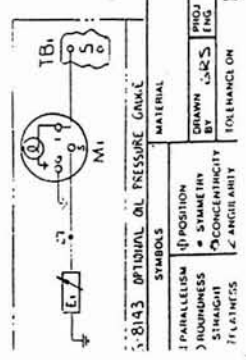


GR 10W4-C/10

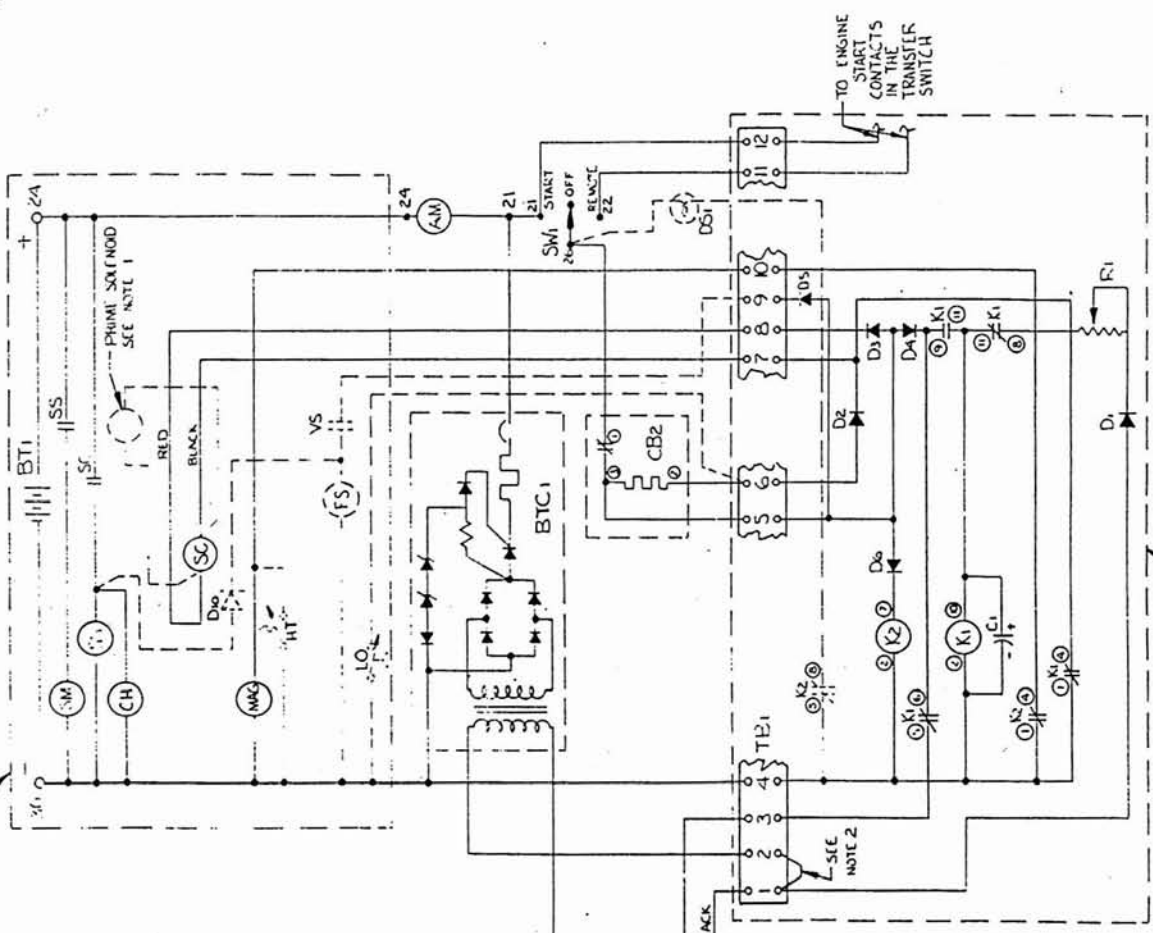
NOTICE: THIS DOCUMENT IS CONFIDENTIAL AND IS THE PROPERTY OF WINPOWER CORPORATION, NEWTON, IA. IT MUST NOT BE USED IN ANY WAY DETRIMENTAL TO OUR INTERESTS. REPRODUCTION OF THIS DOCUMENT BY ANY MEANS OR IN ANY FORM WITHOUT EXPRESS PERMISSION OF THE WINPOWER MANAGEMENT IS PROHIBITED.

ENGINE PARTS LIST	
REF. NO.	PART NO. DESCRIPTION
BT1	VARIOUS BATTERY
CH	SUPP. WITH ENGINE ELECT. CHOKE
FS	FL. 1152 FUEL SOLENOID
HT	SUPP. WITH ENGINE HIGH TEMPERATURE SHUT DOWN
LO	EN-2587 1.5W OIL PRESSURE SHUT DOWN
MAG	SHIFT WITH ENGINE MAGNETO
SC	EE-1201 START CONTACTOR
SM	SHIFT WITH ENGINE START MOTOR
VS	EN-2302 VACUUM SWITCH
SS	SHIFT WITH ENGINE START SOLENOID
D10	G-7879 BLOCKING DIODE
E1	OP-42 SWITCHER - OIL PRESSURE (OPTIONAL)

CONTROL PANEL PARTS LIST	
AM	AM-100 AMMETER 10-0-10 DC
BTC1	G-7219-10 BATTERY CHARGER
C1	EE-17A3 CAPACITOR (5 MFD)
CB1	EE-2809-2 CIRCUIT BREAKER 2P-51A
CB2	EE-2800 OVERCRANK BREAKER
CR1	EE-2214 RECTIFIER ASS'Y
D1, D2, D3	N. A. DIODE
D3, D4, D5	N. A. SILICON RECTIFIER
DS1	G-7611 FAULT LIGHT (OPTIONAL)
K1	EE-1220 RELAY - CRANKING TERMINATION
K2	EE-1207-3 RELAY - START, STOP
L1	EE-177A CHOKE
R1	H-274 RESISTOR
SW1	EE-181 SWITCH-ENGINE START
T1	EE-2045 TRANSFORMER
TB1	EE-660 TERMINAL BOARD
M1	OP-41 (fluid - oil pressure (optional))



REV.	DESCRIPTION	DATE
J	GEN CONNECTIVITY, REVISED	26-85
K	EE-4254 CHANGE WITH EE-2063	26-85
L	EE-1543 CHANGE WITH EE-1551	26-85

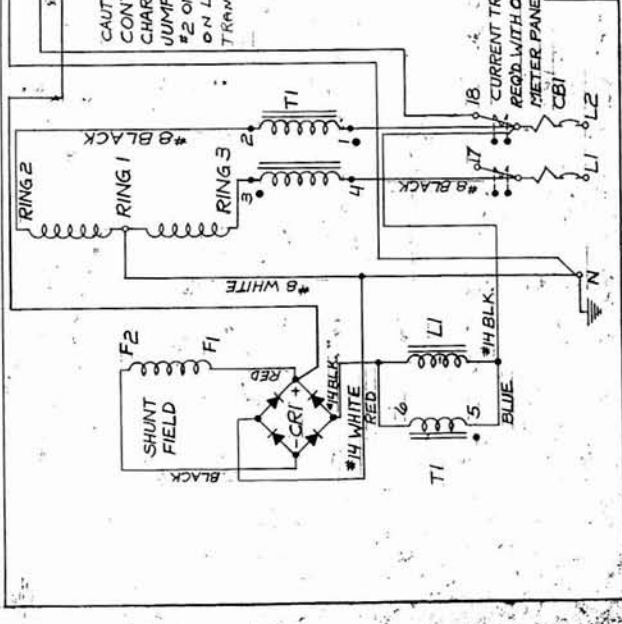


REF.	PART NO.	DESCRIPTION	QTY
MODULE COMPONENTS			
	G-7212 10		

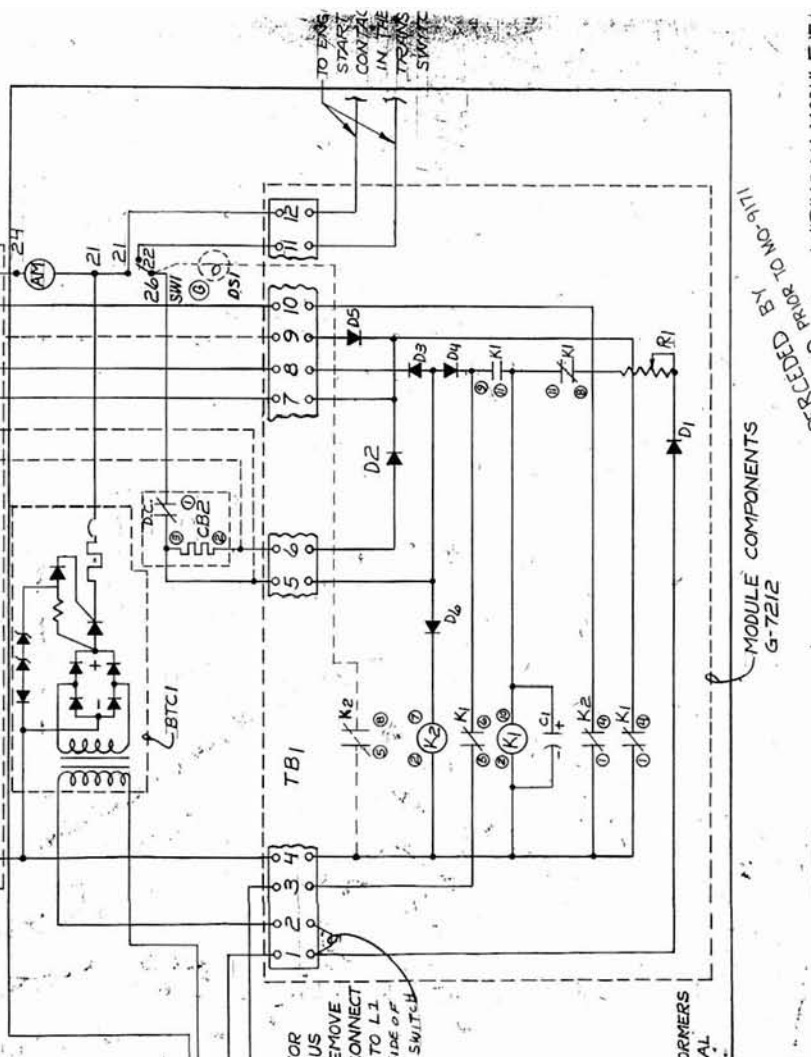
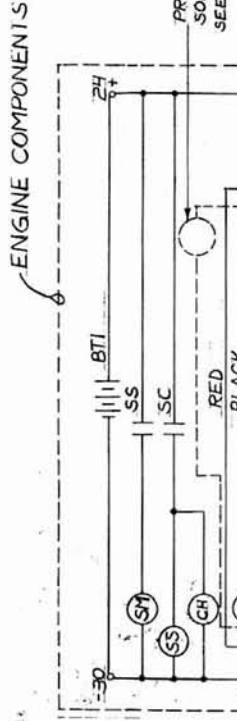
REV.	DESCRIPTION	DATE
	WINPOWER CORPORATION NEWTON, IOWA 50208	
	WIRING DIAGRAM	
GR10W4-C/10	PART NO.	IF-5289
	SCALE	SIZE C
		REV

- NOTES:
- 1) ONLY RECD C11 INITIAL GAS AND VAPOR LPG MODELS.
 - 2) CAUTION! FOR CONTINUOUS CHARGE REMOVE JUMPER AND CONNECT #2 ON TB1 TO L1 ON THE LOAD SIDE OF THE TRANSFER SWITCH.
 - 3) MODULE G-7212-015 USED ONLY ON ENGINES WITH MAGNETO.
 - 4) CURRENT TRANSFORMERS FIT'D WITH OPTIONAL METER PANEL.
 - 5) WIRING DIAGNOSTIC FOR G-7212-015/016/017 IS IE-10716B-10.

REF. NO.	PART NO.	DESCRIPTION
BTI	VARIOUS	BATTERY
CA	SUPP. WITH ENGINE	ENGINE CHOKE
FS	EE-1852	FUEL SOLENOID
HT	EN-2587	HIGH TEMP. SHUTDOWN
LO	EN-2587	LOW OIL PRESS. SHUTDOWN
MAG	SUPP. WITH ENGINE	MAGNETO
SC	EE-1201	START CONTACTOR
SM	SUPP. WITH ENGINE	START MOTOR
VS	EN-2302	VACUUM SWITCH
SS	SUPP. WITH ENGINE	START SOLENOID
CONTROL CABINET PARTS		
BTCI	E-7219	BATTERY CHARGER
CB	EE-513	CAPACITOR
CBI	EE-2809-8	CIRCUIT BREAKER
CBE	EE-2800	OVERCRANK BREAKER
CRI	EE-2214	RECTIFIER ASSY
D2/D4	NA	DIODE
D3/D4/D5	NA	SILICON RECTIFIER
K1	EE-1219/EE-1220	SOCKET RELAY-CRANKING TERMINATION
K2	EE-1207/EE-1207-3	SOCKET RELAY START STOP
LI	EE-1950-1	CHOKE
SWI	EE-1817	SWITCH ENGINE START, OFF REMOTE
TI	EE-972	TRANSFORMER
TBI	EE-6260	TERMINAL BOARD
R1	R-210	RESISTOR
AM	AM-100	AMMETER 10-0-10 D.C.
DST	G-767T	FAULT LIGHT (OPTIONAL)



REVISED	DATE	BY
18-B1		
18-B1		
18-B1		



NOTE: 1. MODULE G-7212 FOR ENGINE WITH MAGNETO ONLY
2. ONLY RECD. ON NATURAL GAS AND VAPOR-LPG MODELS

REV. 1 MADE BY WINPOWER CORP.

WIRING DIA. MODULE IE-1

REV. 1 MADE BY WINPOWER CORP.

CONTROL CIRC.

DATE: 5/14/79

BY: G. A. ...

WINPOWER CORP.

IF-5289