

Wiring Diagram C57097  
 Schematic + N/A  
 Generator Parts  
 Unassembled C57097  
 Complete Unit  
 Part # C57098

\*\*\*\*\*  
 REPAIR  
 PARTS LIST  
 #527  
 \*\*\*\*\*

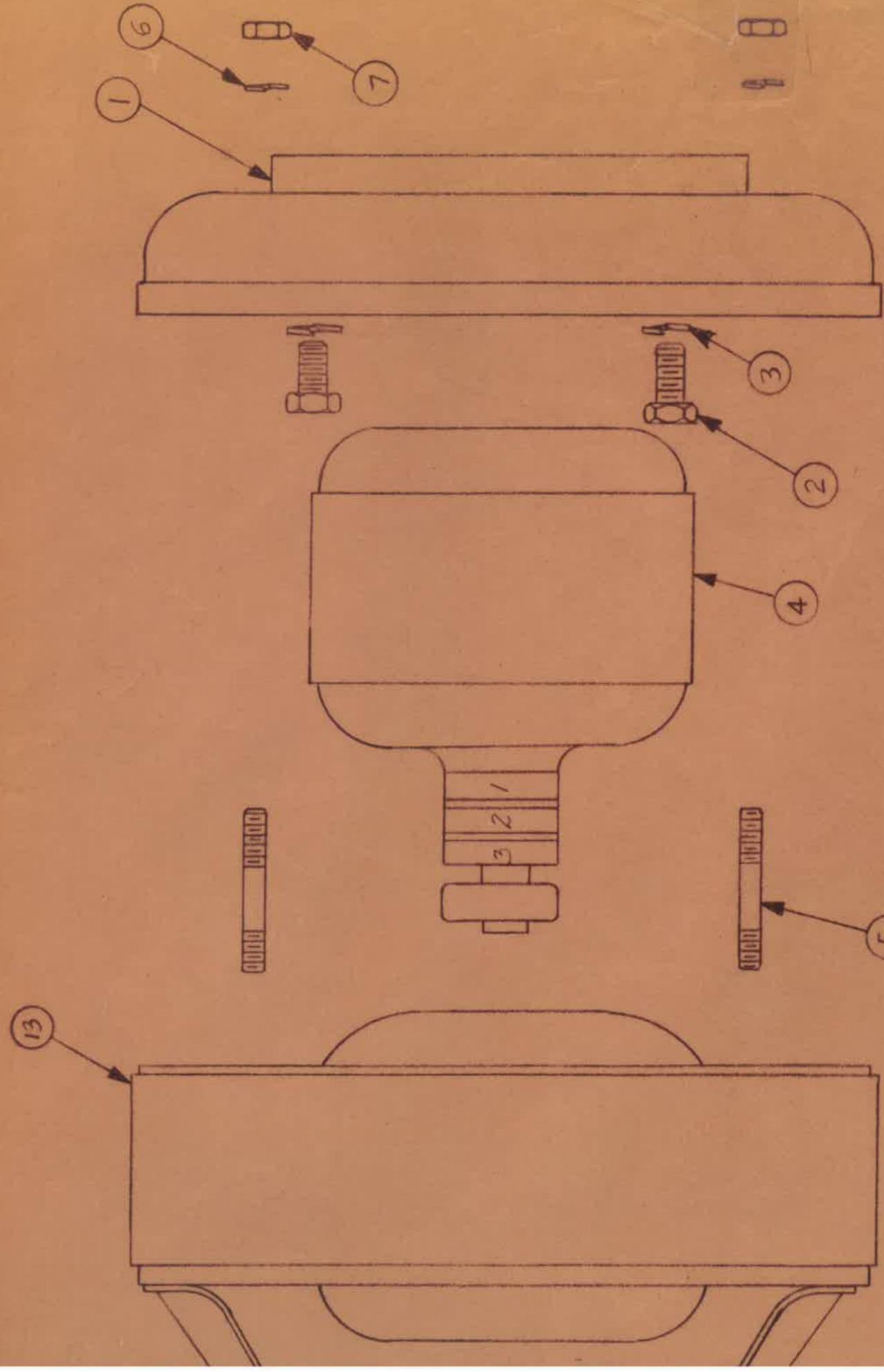
Size 3700 Watts  
 Drive Direct  
 Type Two Pole  
 Unit Model # P307BH-3M/C

<u>DESCRIPTION</u>	<u>PART #</u>	<u>QTY.</u>
Armature	55106-1	1
Armature Bearing	55223	1
Armature Thru Bolt	23197-2	1
Fan Assy.	55101	1
Fan Washer	23558	1
Fan Lockwasher	55224	1
Fan Nut	23605	1
Field Coil	57107	1
Field Coil	57107-1	1
Shell & Bracket Assy.	53722	1
Pole Shoe	24851	2
Pole Shoe Retainer	24849	2
Engine Adaptor Bracket	54178	1
Adaptor Bracket Screw	3290	4
End Cover Assy.	55251	1
End Cover Receptacle	53636	2
End Cover Receptacle (230V)	55253	1
Brush Rack Assy. (Complete)	55247	1
A. C. Brush	23607	6
A. C. Brush Holder	23500	6
Brush Holder Plate	55107	1
A. C. Condenser	41221	2
Excitation Rectifier & Plate Assy.	55495	1
<i>Rectifier</i>	<i>91452</i>	
Cradle	43297-1	1
Shock Mounts	23623	4
Rubber Foot	20191	3

ENGINE MAKE Briggs & Stratton MODEL # 190432 PART # 55177

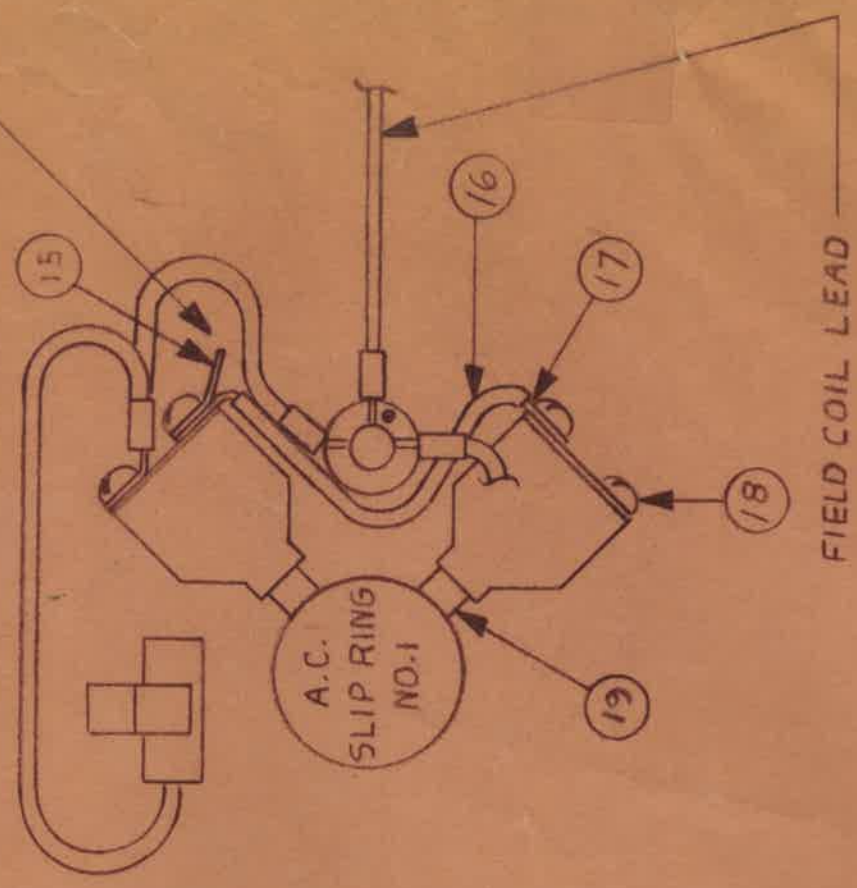
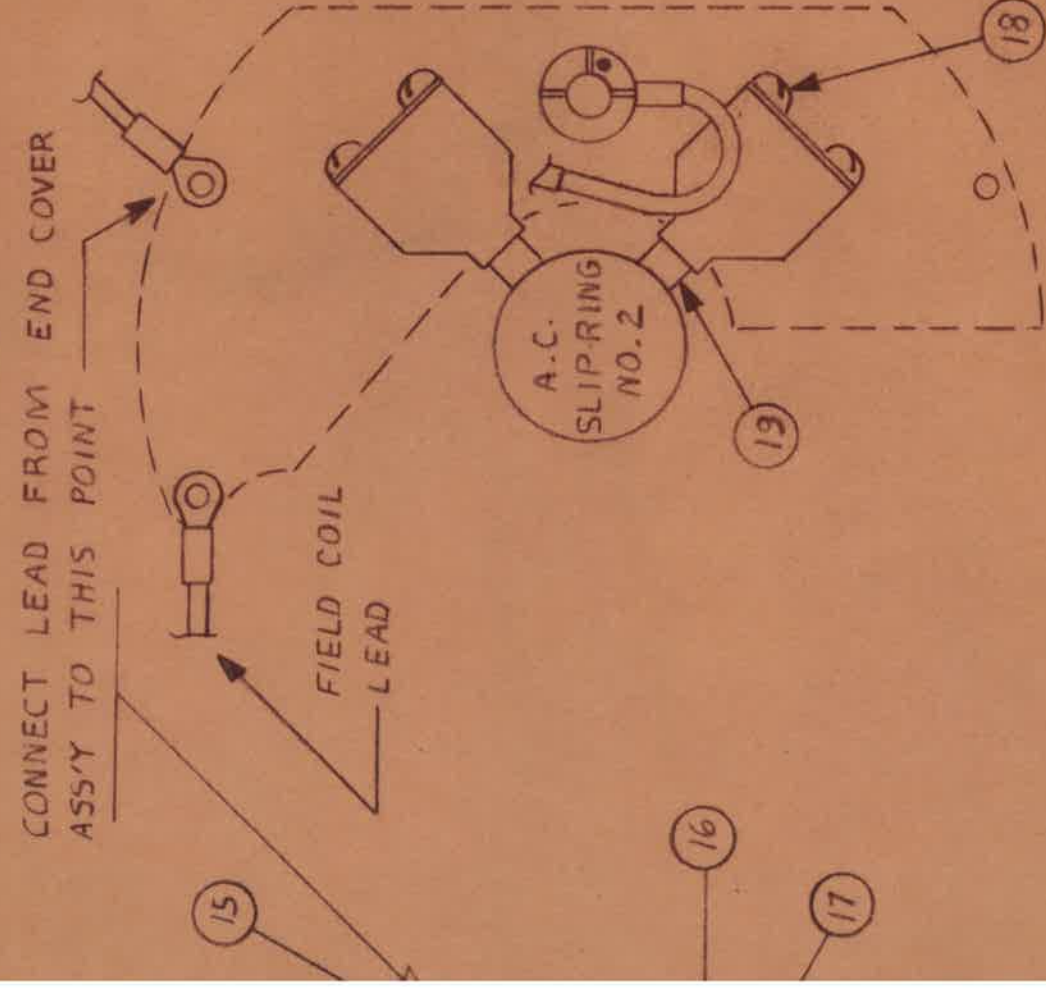


Division of Dyna Technology, Inc.  
 225 South Cordova St. / LE CENTER, MINNESOTA 56057  
 Phone: (612) 357-6821



CONNECT LEAD FROM END COVER  
ASSY TO THIS POINT

CONNECT LEAD FROM END COVER  
ASSEMBLY TO THIS POINT  
MAINTAIN 3/32 MIN. CLEARANCE  
BETWEEN LUG & BRUSH PLATE

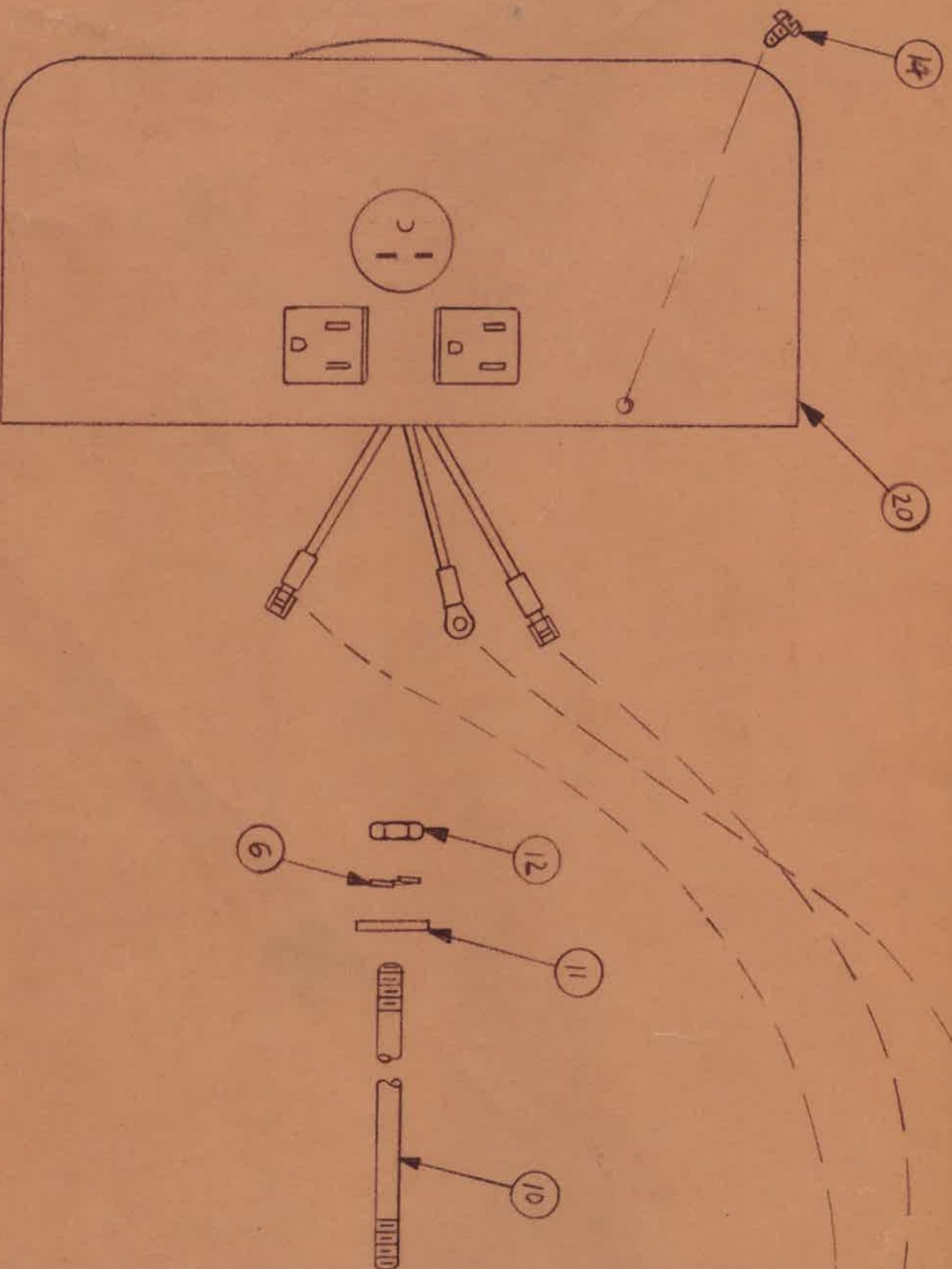


ALL DIMENSIONS GIVEN IN INCHES - WORK TO DIMENSIONS - DO NOT SCALE - SAMPLES  
MUST BE APPROVED BY WINCHARGER ENGINEERING DEPT BEFORE PROCEEDING WITH PRODUCTION  
- TOLERANCES (UNLESS OTHERWISE SPECIFIED): FRACTIONS  $\pm 1/64$   
DECIMALS  $\pm .005$  PUNCHED HOLES  $+ .004 - .000$

DRAWN BY M.W.U. DATE 9-7-73  
CHKD BY [Signature] DATE 10-4-73  
APPRD BY [Signature] DATE 10-23-73  
SCALE 1" = 2"

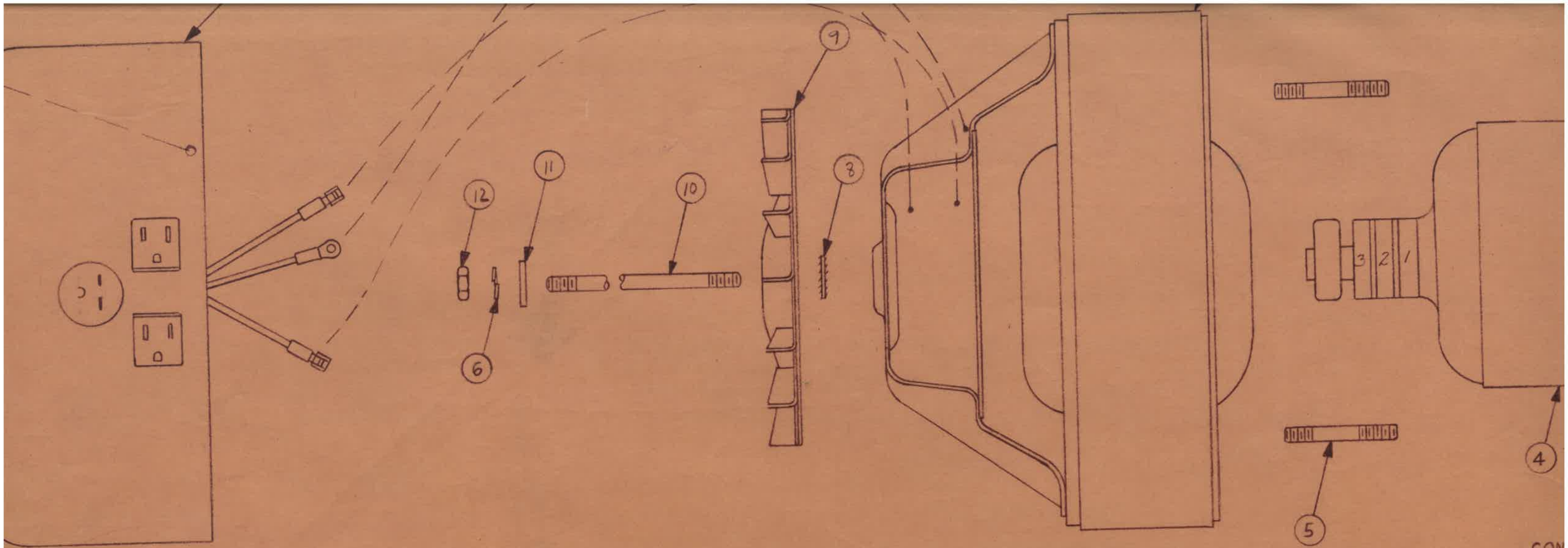
FINISH \_\_\_\_\_  
ASSY C-57098  
MODEL P307BH-3M/C  
GENERATOR PARTS  
UNASSEMBLED  
WINCHARGER CORP.  
SIOUX CITY, IOWA  
C-57097

ISSUE	REVISION	DATE	BY	AUTH.
1	ORIGINAL			

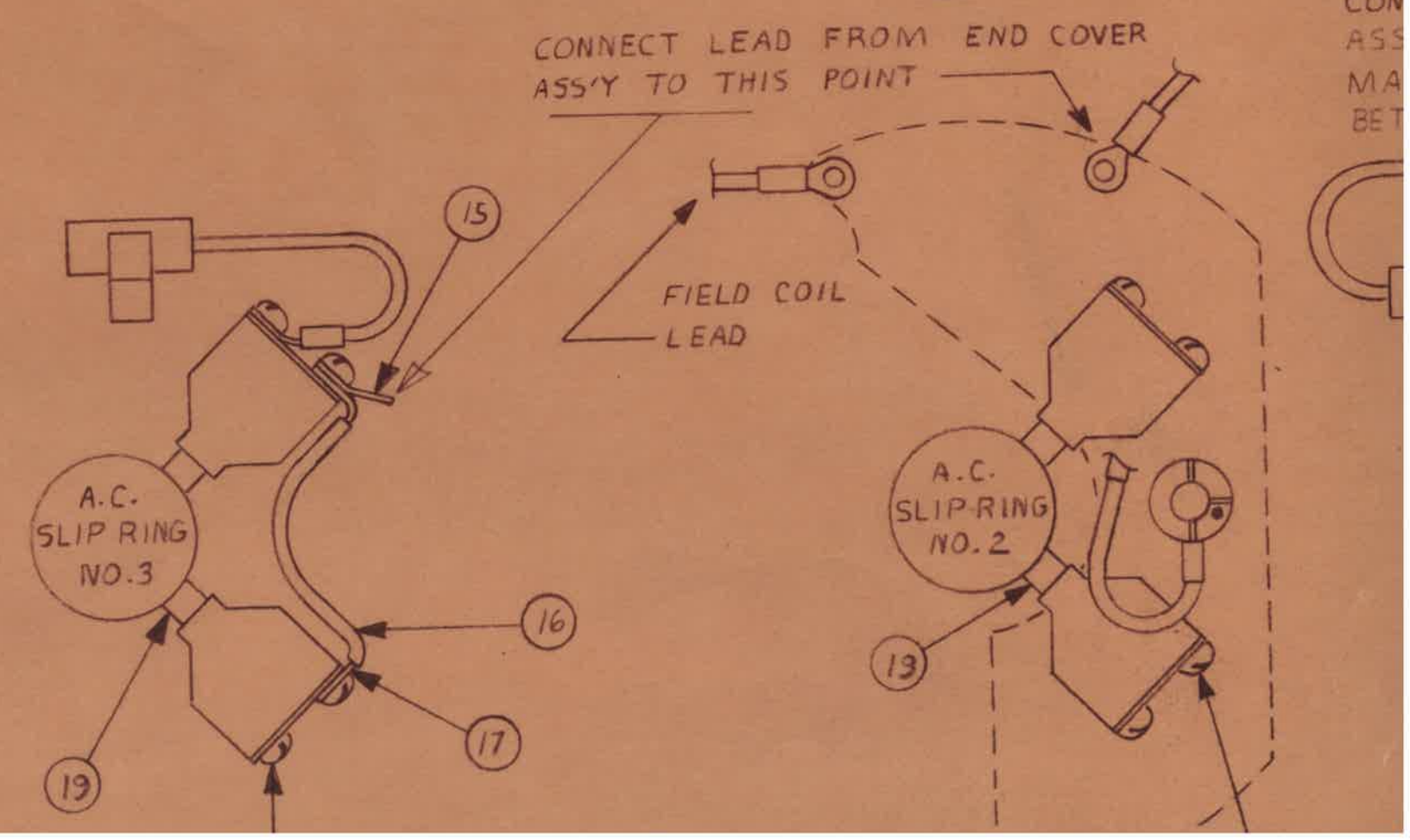


20	C-55140	1	END COVER & RECEPTACLE ASS'Y
19	A-23607	6	A.C. BRUSH
18	40746	12	#8-32X5/16 BD. HD. MACH. SCREW
17	A-41387-7	2	COPPER STRAP
16	A-46024-3	2	INSULATION SLEEVING
15	A-53643	2	TERMINAL LUG ADAPTER
14	A-53644	2	SELF TAPPING SCREW
13	C-57108	1	FIELD SHELL & COIL ASSEMBLY
12	23605	1	5/16-24 HEX NUT
11	A-23558	1	FLAT WASHER
10	A-23197-2	1	ARMATURE THRU-BOLT
9	B-55101	1	FAN ASSEMBLY
8	A-55224	1	5/16 INT./EXT. TOOTH LOCKWASHER
7	458	4	5/16-18 HEX NUT
6	480	5	5/16 SPLIT TYPE LOCKWASHER
5	A-23451	4	STUD
4	B-55106	1	ARMATURE
3	481	4	3/8 SPLIT TYPE LOCKWASHER
2	3290	4	3/8-16 X 1-1/4 HEX. HD. CAP SCREW
1	C-54178	1	END BRACKET
ITEM	PART NO.	QTY.	DESCRIPTION

## PARTS LIST



40	1	END COVER & RECEPTACLE ASS'Y
07	6	A.C. BRUSH
6	12	#8-32X5/16 BD. HD. MACH. SCREW
7-7	2	COPPER STRAP
24-3	2	INSULATION SLEEVING
43	2	TERMINAL LUG ADAPTER
44	2	SELF TAPPING SCREW



CON  
ASS  
MA  
BET