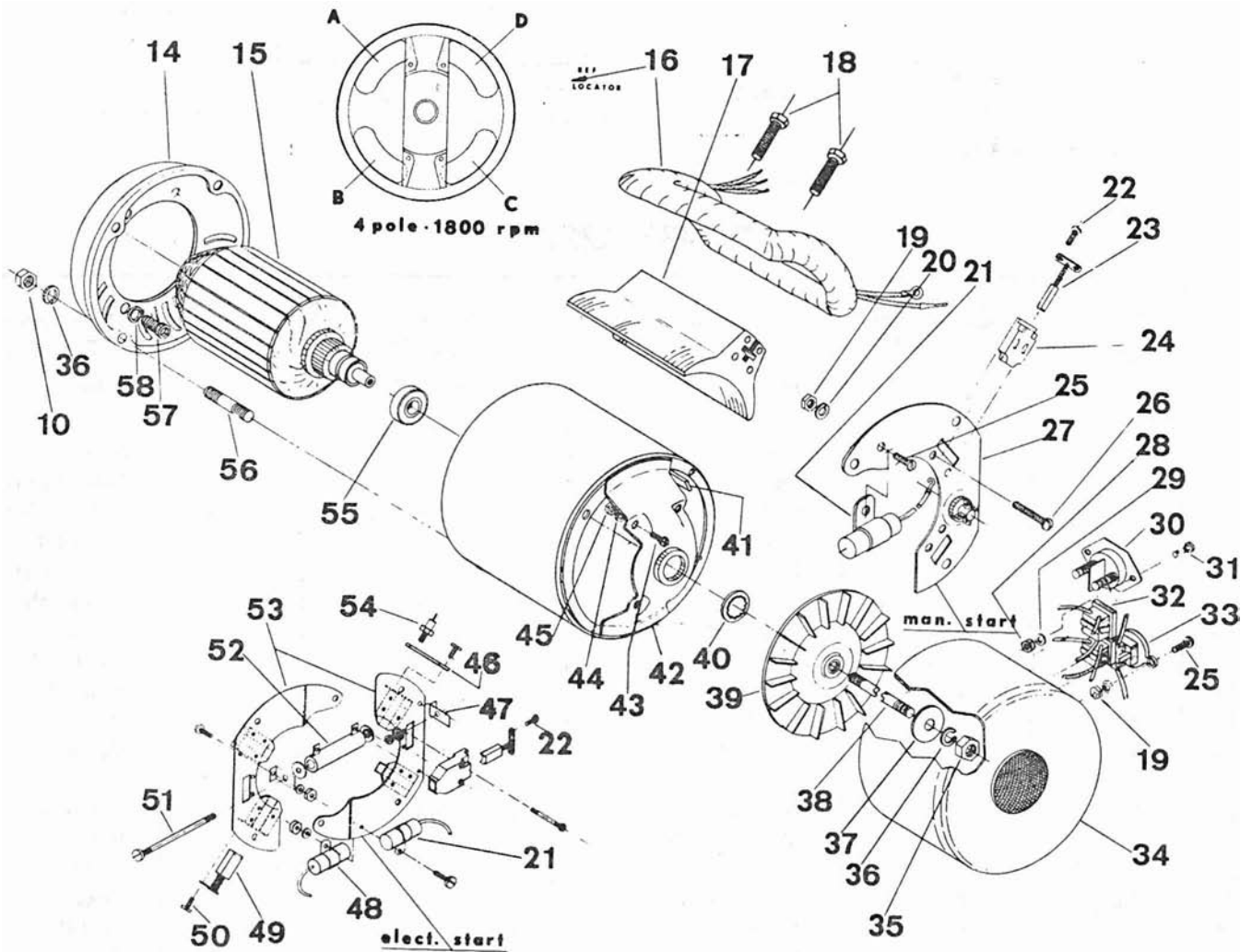


WINCO GENERATOR PLANT
 Models P2BS-1M/A and P2BS-1E/A

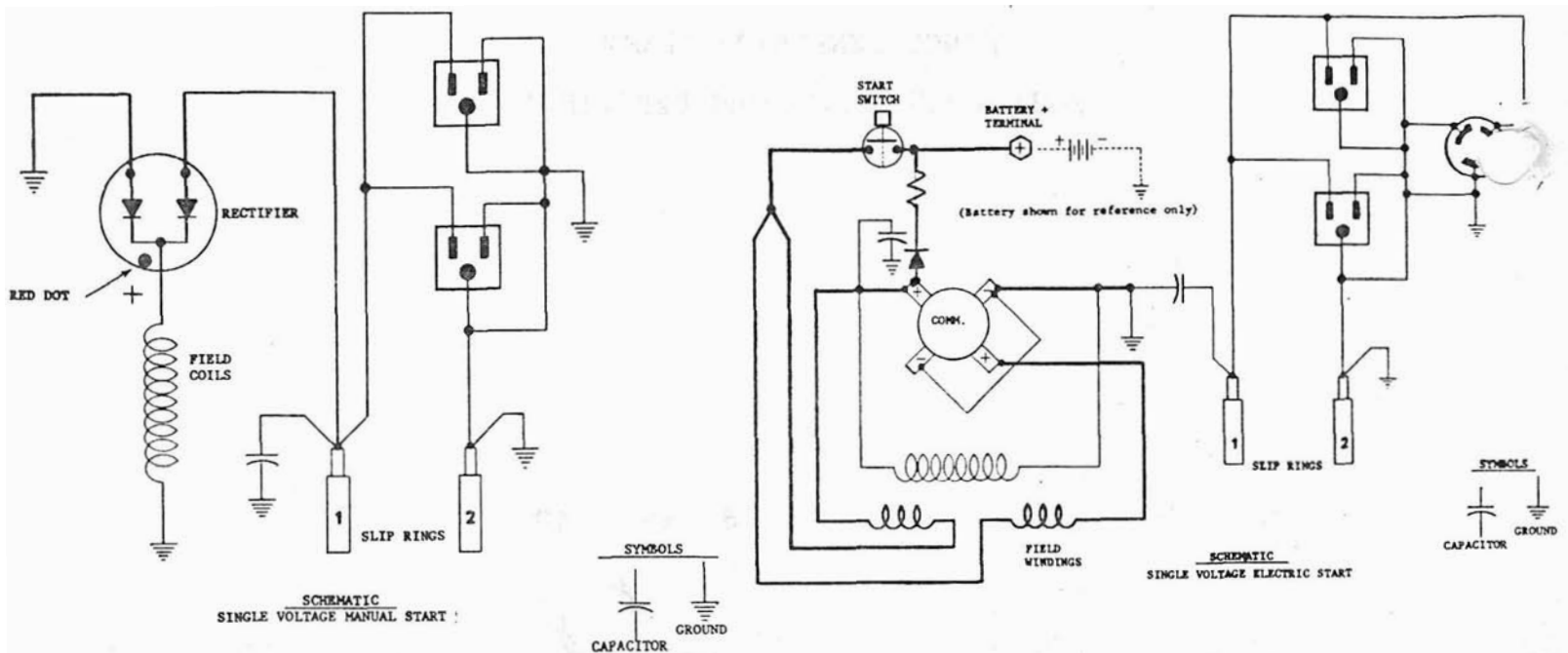


RPL#612



Division of Dyna Technology, Inc.
 225 South Cordova St. / LE CENTER, MINNESOTA 56057
 Phone: (612) 357-6821

FEB78



PARTS LIST

Item	Part No.	M* Qty.	E* Qty.	Description	Item	Part No.	M* Qty.	E* Qty.	Description
14	54178	1	1	End bracket	37	23558	1	1	Flat washer
15	55163-1	1	—	Armature	38	23197-2	1	1	Thru bolt
	56135-1	—	1	Armature	39	55101	1	1	Fan
16a	55127	1	—	Field coil	40	55224	1	1	Lockwasher
	55136	—	1	Field coil	41	23543	4	4	Pole shoe retain
16b	55127-1	1	—	Field coil	42	55128	1	1	Field shell & bracket
	55136-1	—	1	Field coil	43	420	3	4	Machine screw
16c	55127-2	1	—	Field coil	44	22423	4	5	Lockwasher
	55136-2	—	1	Field coil	45	456	4	5	Hex nut
16d	55127-3	1	—	Field coil	46	53996	—	1	Heat sink
	55136-3	—	1	Field coil	47	55178	—	2	Bracket
17	23540	4	4	Pole shoe	48	41180	—	1	DC capacitor
18	468	8	8	Hex hd cap screw	49	41393	—	4	DC brushes
19	5113	5	5	Hex nut	50	4637	—	7	Machine screw
20	6376	5	5	Lockwasher	51	25394	—	1	Machine screw
21	54977	1	—	AC capacitor	52	24870	—	1	Resistor
22	40746	8	8	Machine screw	53	55376	—	2	Riveted brush rack assy
23	23607	4	4	AC brush	54	54023-1	—	1	Rectifier
24	23500	4	4	AC brush holder	55	55223	1	1	Bearing
25	6402	1	1	Machine screw	56	23451	4	4	Stud bolt
26	23598	4	4	Machine screw	57	3290	4	4	Cap screw
27	55495	1	—	Rectifier & plate assy	58	481	4	4	Lockwasher
28	638	—	2	Hex nut					
29	479	—	6	Lockwasher					
30	2210	—	1	Start switch					
31	3884	—	2	Machine screw					
32	53636	2	2	Receptacle					
33	56000	—	1	Receptacle					
34	55205	1	—	End cover					
	55367	—	1	End cover					
35	23605	1	1	Hex nut					
36	480	7	9	Lockwasher					

M* - Manual Start Model P2BS-1M/A
 E* - Electric Start Model P2BS-1E//

Any parts required for gas engine portion of the unit should be obtained from the local engine manufacturer's service station.