

Wiring Diagram	<u>N/A</u>	<pre> ***** REPAIR PARTS LIST #532 ***** </pre>	Size	<u>2500 Watts</u>
Schematic	<u>N/A</u>		Drive	<u>Direct</u>
Generator Parts			Type	<u>Two Pole</u>
Unassembled	<u>C55311</u>		Unit Model #	<u>P205BH-1M/B</u>
Complete Unit				
Part #	<u>C55310</u>			

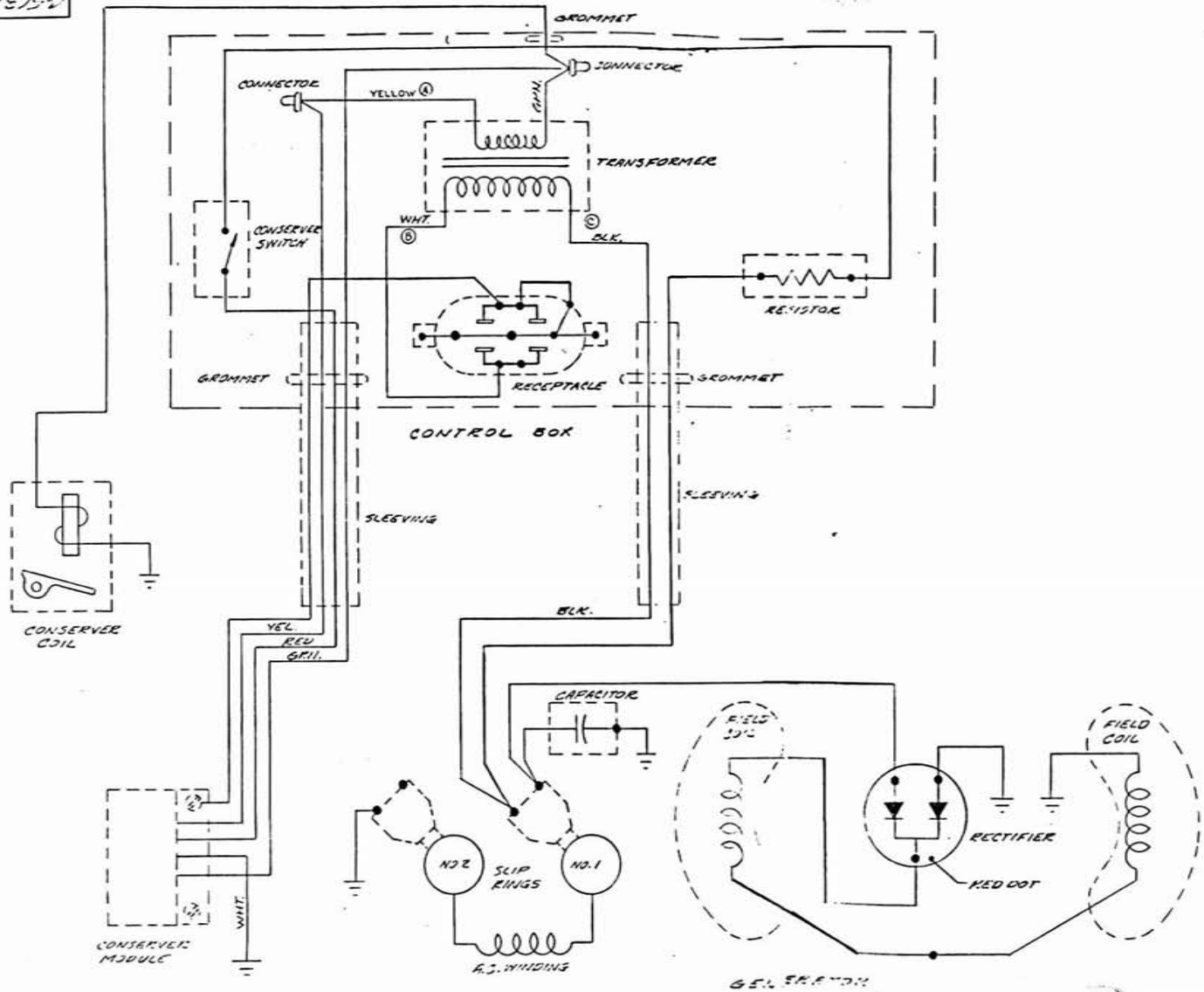
<u>DESCRIPTION</u>	<u>PART #</u>	<u>QTY.</u>
Armature	55273-1	1
Armature Bearing	55223	1
Armature Thru Bolt	23197-3	1
Fan Assy.	54967	1
Fan Washer	23558	1
Fan Lockwasher	40552	1
Fan Nut	23605	1
Field Coil	53615A	1
Field Coil	53615-1A	1
Shell & Bracket Assy.	53614	1
Pole Shoe	53612	2
Pole Shoe Retainer	53613	2
Engine Adaptor Bracket	43887	2
Adaptor Bracket Screw	55576	4
End Cover Assy.	55281	1
End Cover Receptacle	53636	2
Brush Rack Assy. (Complete)	55092	1
A. C. Brush	23607	4
A. C. Brush Holder	23500	4
A. C. Condenser	54977	1
Excitation Rectifier & Plate Assy.	(91452) 55495	1
Base Channels	55094	2
Spring Feet	55096	4
Handle	53583	1

ENGINE MAKE Briggs & Stratton MODEL # 130232 PART # 53655



Division of Dyna Technology, Inc.  
225 South Cordova St. / LE CENTER, MINNESOTA 56057  
Phone: (612) 357-6821

15752



ALL DIMENSIONS GIVEN IN INCHES—WORK TO DIMENSIONS—DO NOT SCALE—SAMPLES MUST BE APPROVED BY DYNA TECHNOLOGY ENGINEERING DEPARTMENT PROCEEDING WITH PRODUCTION					
— TOLERANCES (UNLESS OTHERWISE SPECIFIED) FRACTIONS $\geq 1/64$					
DECIMALS $\geq .005$ PUNCHED HOLES .004 — .000					
DRAWN BY	DATE	CHK'D BY	DATE	APPR'D BY	DATE
JON	5-21-78	JRM	5-23-78	JRM	5-23-78
MATERIAL					
FINISH					
ASST					
WORK					
REVISION					
DATE BY AUTH					
DYNA TECHNOLOGY, INC.					
SIoux CITY IOWA					

(A) WAS RED (R) WAS WHITE/YELLOW  
 (B) WAS RED/BLACK, TRANSFORMER  
 REVISED  
 5/23/78

WIRING DIAGRAM

2-56310