
 *
 * PARTS LIST NO. 616 *
 *

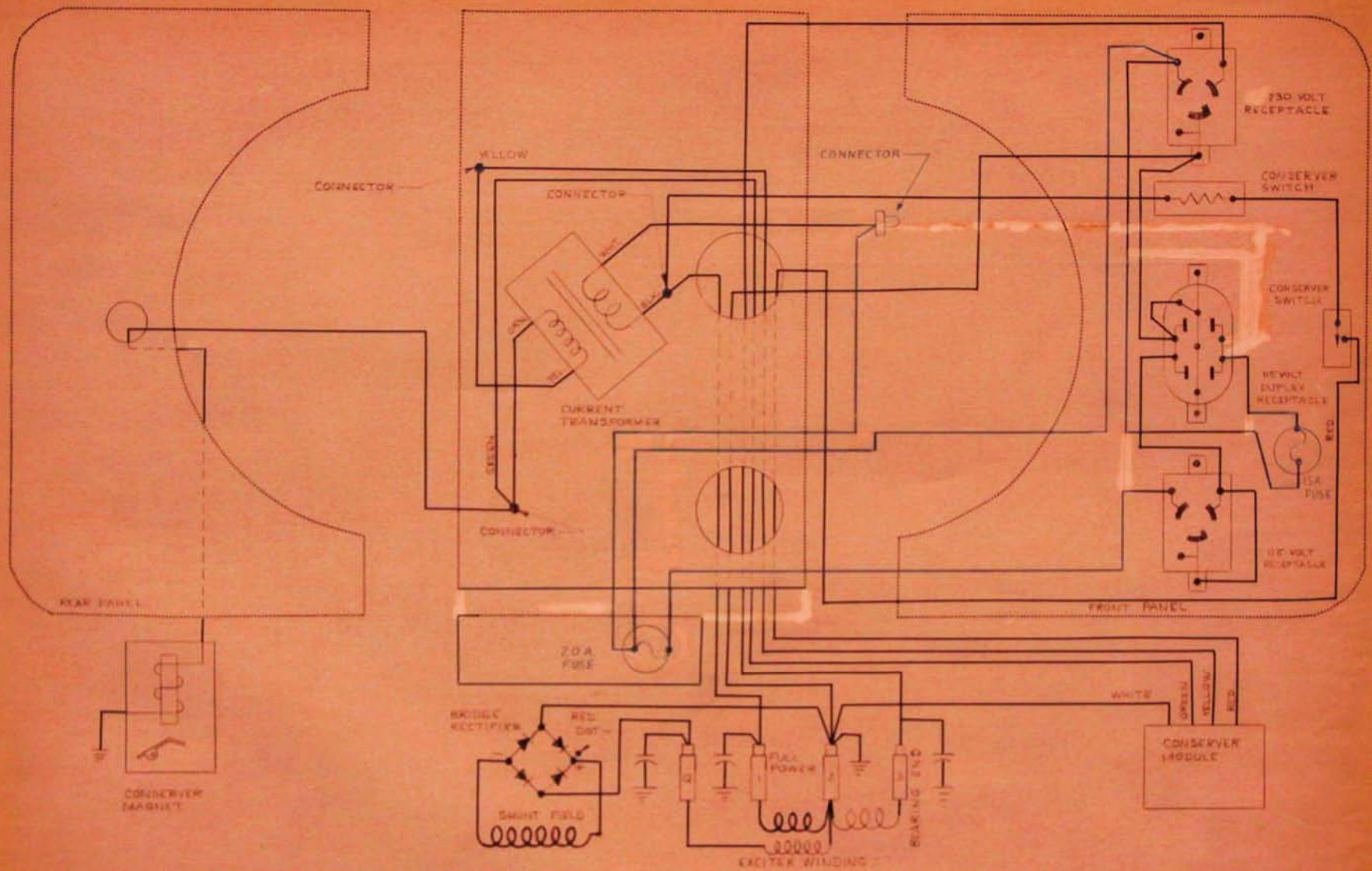
MODEL CSA305WRH-FM/I PART NO. 58304-2 WIRING DIAGRAM 57415

ENGINE : 57421

WATTS 3500 VOLT 115 AMP 30.4 PH 1 HZ 60 RPM 3600 INS. A

Ref. No.	Description	Qty	Part No.	Ref. No.	Description	Qty	Part No.
	Armature	1	56961-1		Control Box Assy.	1	57418
	Armature Bearing	1	55223		Cover Assy.	1	51580
	Armature Thru Bolt	1	23197-2		Front Panel (Bare)	1	57416-1
	Fan Assy.	1	55101		Rear Panel (Bare)	1	51608
	Fan Washer	1	55224		Receptacle (115) (15)	1	24749
	Fan Lockwasher	1	480		Receptacle (115) (20)	1	56279
	Fan Nut	1	23605		Receptacle	1	56281
	Field Coil	1	56958		Fuse	2	20577
	Field Coil	1	56958-1		Fuse Holder	2	4667
	Shell & Brkt. Assy.	1	56917		Conservor Assy.		
	Pole Shoe	2	24851		(Complete)	1	58305
	Pole Shoe Retainer	2	24849		Module	1	48574
	Engine Adaptor Brkt.	1	54178		Transformer	1	54196
	Adaptor Brkt. Screw	4	3290		Electro Magnet	1	44889
	End Cover Assy.	1	55007		Formed Brkt.	1	58306
	Brush Rack Assy.	1	56959		Lever (Throttle)	1	58325
	(Complete) &	1	56959-1		Resistor	1	48583
	A.C. Brush	9	55536		Switch	1	24238
	A.C. Brush Holder	9	23500		Cover	1	44891
	A.C. Condenser	3	41221		Cover Nut	1	44894
	Rectifier (Excitation)	1	91452				
	Cradle or Frame	1	57497				
	Flat Bar	1	57496				
	Shock Mounts	4	23623				
	Formed Brkt.	1	43291				
					ENGINE MAKE <u>Wisc-Robin</u>		
					MODEL # <u>EY-27</u>		
					PART # <u>57421</u>		

4167500



- NOTES:
1. COLOR ADJACENT TO CONDUCTOR INDICATES COLOR OF INSULATION WHERE NO COLOR IS INDICATED INSULATION IS BLACK.
 2. CONDUCTOR ARE SHOWN IN DASHED LINES WHEN THEY PASS THROUGH THE PANEL SURFACE ON WHICH THEY ARE SHOWN.

ALL DIMENSIONS GIVEN IN INCHES UNLESS OTHERWISE SPECIFIED—DO NOT SCALE—DIMENSIONS MUST BE APPROVED BY DYNA TECHNOLOGY INCORPORATED FOR ANY PRODUCTION

TOLERANCES UNLESS OTHERWISE SPECIFIED: FRACTIONS 1/16
 DECIMALS 0.005 PUNCHING HOLES 0.004 - 0.005

ISSUED BY	DATE	REV	DATE	BY	CHKD
J. D. B.	1-16-74	1/1	5-25-74	J. D. B.	J. D. B.

FIG. NO. 4-57415-1
 WIRING DIAGRAM
 DYNA TECHNOLOGY, INC.
 8000 DUTY DRIVE
 C-57415

NE