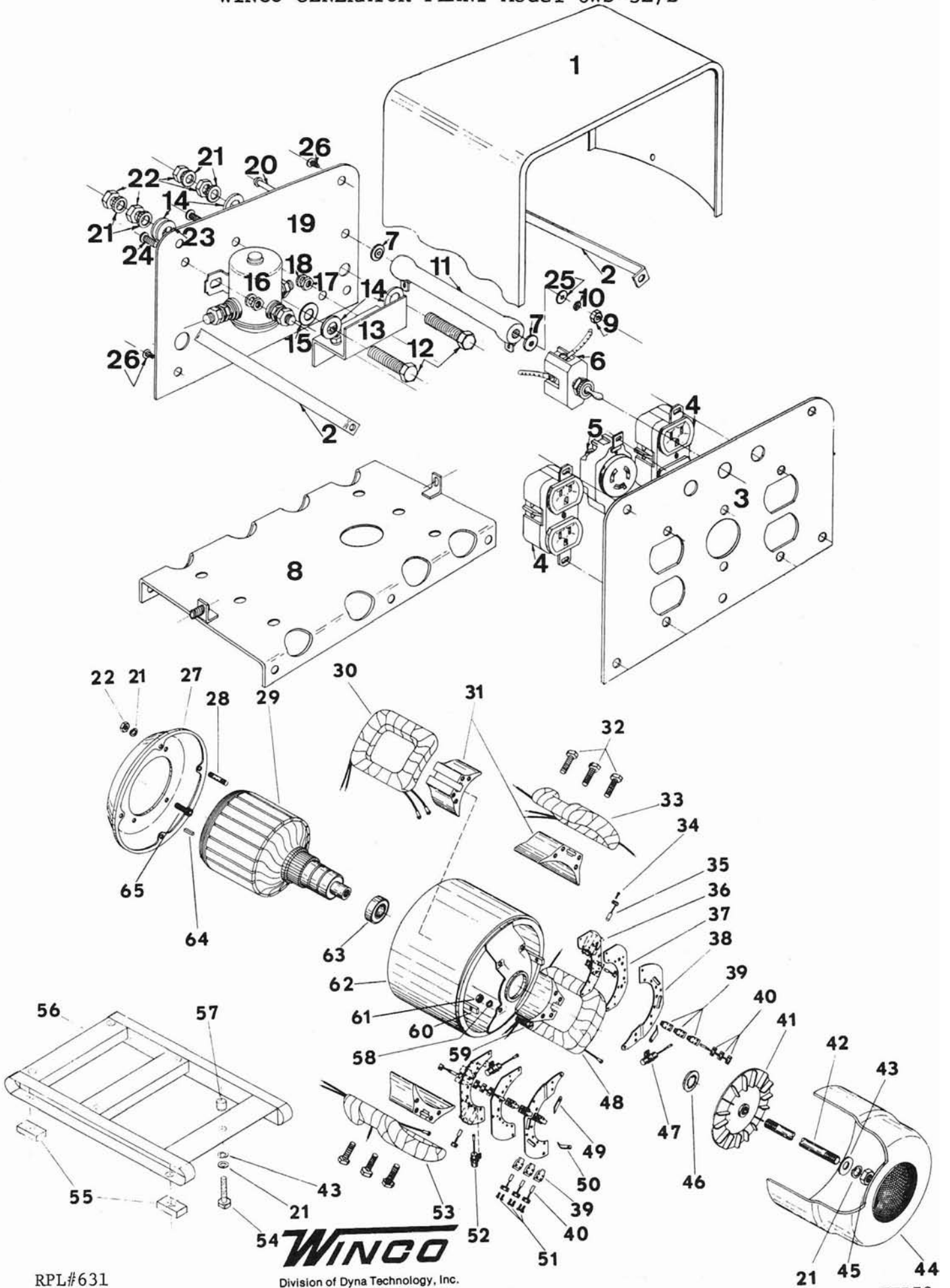


WINCO GENERATOR PLANT Model 6WS-3E/B



RPL#631

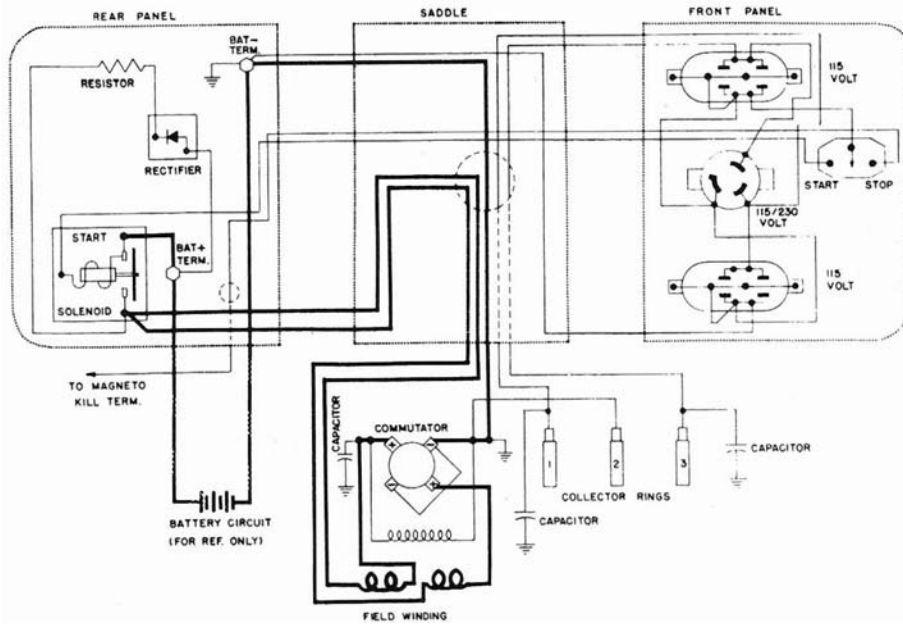
**WINCO**

Division of Dyna Technology, Inc.

225 South Cordova St. / LE CENTER, MINNESOTA 56057

Phone: (612) 357-6821

FEB78



## PARTS LIST

| Item | Part No. | Qty. | Description                | Item | Part No. | Qty. | Description                 |
|------|----------|------|----------------------------|------|----------|------|-----------------------------|
| 1    | 21626    | 1    | Cover                      | 33   | 53131-3  | 1    | Field coil                  |
| 2    | 49974    | 2    | Brace                      | 34   | 4637     | 10   | Machine screw               |
| 3    | 56401    | 1    | Front Panel                | 35   | 41393    | 4    | DC brush                    |
| 4    | 24749    | 2    | Receptacle                 | 36   | 51936    | 2    | Riveted DC brush rack assy. |
| 5    | 56281    | 1    | Receptacle                 | 37   | 53454    | 2    | Mounting plate spacer       |
| 6    | 23772    | 1    | Switch                     | 38   | 51933    | 2    | Mounting plate half         |
| 7    | 1376     | 2    | Shoulder Washer            | 39   | 23500    | 9    | AC brush holder             |
| 8    | 24733    | 1    | Base                       | 40   | 55536    | 9    | AC brushes                  |
| 9    | 6372     | 1    | Hex Nut                    | 41   | 23404    | 1    | Fan                         |
| 10   | 21975    | 1    | Lockwasher                 | 42   | 24185    | 1    | Thru bolt                   |
| 11   | 40149    | 1    | Resistor                   | 43   | 23558    | 2    | Flat washer                 |
| 12   | 21974    | 2    | Machine Screw              | 44   | 23634    | 1    | End cover                   |
| 13   | 45930-2  | 1    | Heat Sink & Diode Assembly | 45   | 23605    | 1    | Hex nut                     |
| 14   | 8068     | 4    | Flat Washer (brass)        | 46   | 40552    | 1    | Lockwasher                  |
| 15   | 21981    | 1    | Insulation Washer          | 47   | 41180    | 1    | DC condenser                |
| 16   | 24061    | 1    | solenoid                   | 48   | 53131-2  | 1    | Field coil                  |
| 17   | 638      | 4    | Hex Nut                    | 49   | 41387-7  | 2    | Ground strap                |
| 18   | 479      | 4    | Lockwasher                 | 50   | 41387-1  | 1    | Ground strap                |
| 19   | 52585    | 1    | Rear Panel                 | 51   | 40746    | 18   | Machine screw               |
| 20   | 24864    | 1    | Machine Screw              | 52   | 41221    | 2    | AC condenser                |
| 21   | 480      | 10   | Lockwasher                 | 53   | 53131-1  | 1    | Field coil                  |
| 22   | 458      | 8    | Hex Nut                    | 54   | 471      | 1    | Cap screw                   |
| 23   | 6892     | 1    | Insulation Washer          | 55   | 24725    | 4    | Rubber blocks               |
| 24   | 3884     | 4    | Machine Screw              | 56   | 49987    | 1    | Frame assy                  |
| 25   | 598      | 1    | Flat Washer                | 57   | 24780    | 1    | Spacer                      |
| 26   | 21698    | 10   | Sheet Metal Screw          | 58   | 484      | 4    | Lockwasher                  |
| 27   | 24957    | 1    | Mounting bracket           | 59   | 3728     | 4    | Screw                       |
| 28   | 23451    | 4    | Stud                       | 60   | 51926    | 4    | Pole shoe retainer          |
| 29   | 55302-1  | 1    | Armature                   | 61   | 456      | 4    | Nut                         |
| 30   | 53131    | 1    | Field coil                 | 62   | 52543    | 1    | Field shell & bracket       |
| 31   | 51925    | 4    | Pole shoe assy.            | 63   | 50215    | 1    | Bearing                     |
| 32   | 1743     | 12   | Cap screw                  | 64   | 51882    | 1    | Key                         |
|      |          |      |                            | 65   | 24707    | 4    | Allen screw                 |

Any parts required for gas engine portion of the unit should be obtained from the local engine manufacturer's service station.

|                 |                 |            |              |                   |
|-----------------|-----------------|------------|--------------|-------------------|
| Wiring Diagram  | <u>C53560</u>   | *****      | Size         | <u>6000 Watts</u> |
| Schematic       | <u>N/A</u>      | REPAIR     | Drive        | <u>Direct</u>     |
| Generator Parts |                 | PARTS LIST | Type         | <u>Four Pole</u>  |
| Unassembled     | <u>D55348</u>   | #485       |              |                   |
| Complete Unit   |                 | *****      |              |                   |
| Part #          | <u>D55349-1</u> |            | Unit Model # | <u>6WS-3R/A</u>   |

| <u>DESCRIPTION</u>    | <u>PART #</u> | <u>QTY.</u> | <u>DESCRIPTION</u>    | <u>PART #</u> | <u>QTY.</u> |
|-----------------------|---------------|-------------|-----------------------|---------------|-------------|
| Armature              | 55302-1       | 1           | Control Box Assy.     | 53405         | 1           |
| Armature Bearing      | 50215         | 1           | Cover Assy.           | 49627         | 1           |
| Armature Thru Bolt    | 24185         | 1           | Front Panel (Bare)    | 53561         | 1           |
|                       |               |             | Rear Panel (Bare)     | 52592         | 1           |
| Fan Assy.             | 23404         | 1           | Resistor (Charge)     | 40149         | 1           |
| Fan Washer            | 23558         | 1           | Reverse Current Diode | 45930-2       | 1           |
| Fan Lockwasher        | 40552         | 1           | Start Stop Switch     | 23772         | 1           |
| Fan Nut               | 23605         | 1           | Start Solenoid        | 24061         | 2           |
|                       |               |             | Terminal Block        | 22148         | 1           |
| Field Coil            | 53131         | 1           |                       |               |             |
| Field Coil            | 53131-1       | 1           |                       |               |             |
| Field Coil            | 53131-2       | 1           |                       |               |             |
| Field Coil            | 53131-3       | 1           |                       |               |             |
| Shell & Bracket Assy. | 52543         | 1           |                       |               |             |
| Pole Shoe             | 51925         | 1           |                       |               |             |
| Pole Shoe Retainer    | 51926         | 1           |                       |               |             |
| Engine Adaptor Brkt.  | 24957         | 1           |                       |               |             |
| Adaptor Brkt. Screw   | 24707         | 1           |                       |               |             |
| End Cover Assy.       | 23634         | 1           |                       |               |             |
| Brush Rack Assy.      | 55346         | 1           |                       |               |             |
| (Complete )           | & -1          | 1           |                       |               |             |
| A. C. Brush           | 55536         | 9           |                       |               |             |
| A. C. Brush Holder    | 23500         | 9           |                       |               |             |
| D. C. Brush           | 41393         | 4           |                       |               |             |
| D. C. Brush Holder    |               |             |                       |               |             |
| & Plate Assy.         | 51936         | 2           |                       |               |             |
| A. C. Condenser       | 41221         | 2           |                       |               |             |
| D. C. Condenser       | 41180         | 1           |                       |               |             |
| Frame                 | 49987         | 1           |                       |               |             |

ENGINE MAKE Wisconsin MODEL # THD PART # 24006