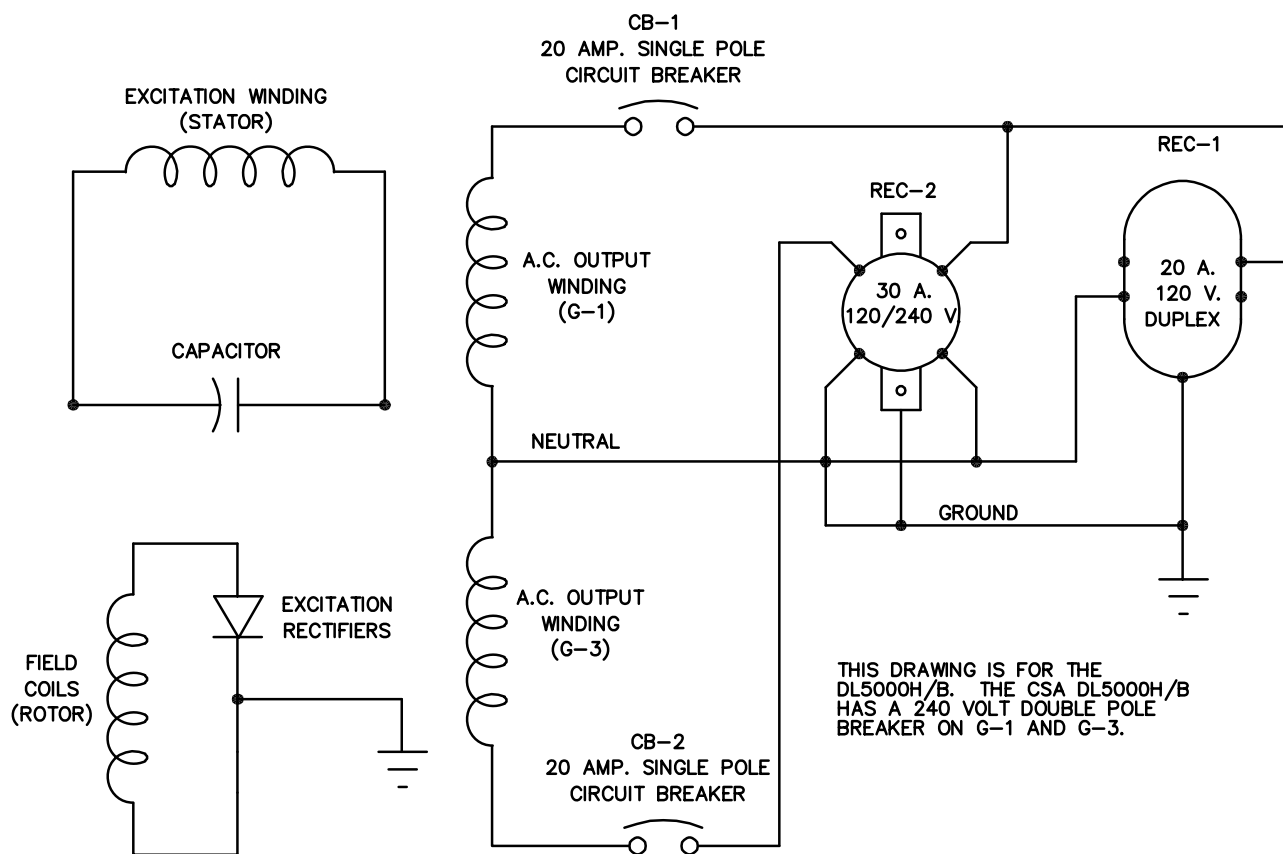
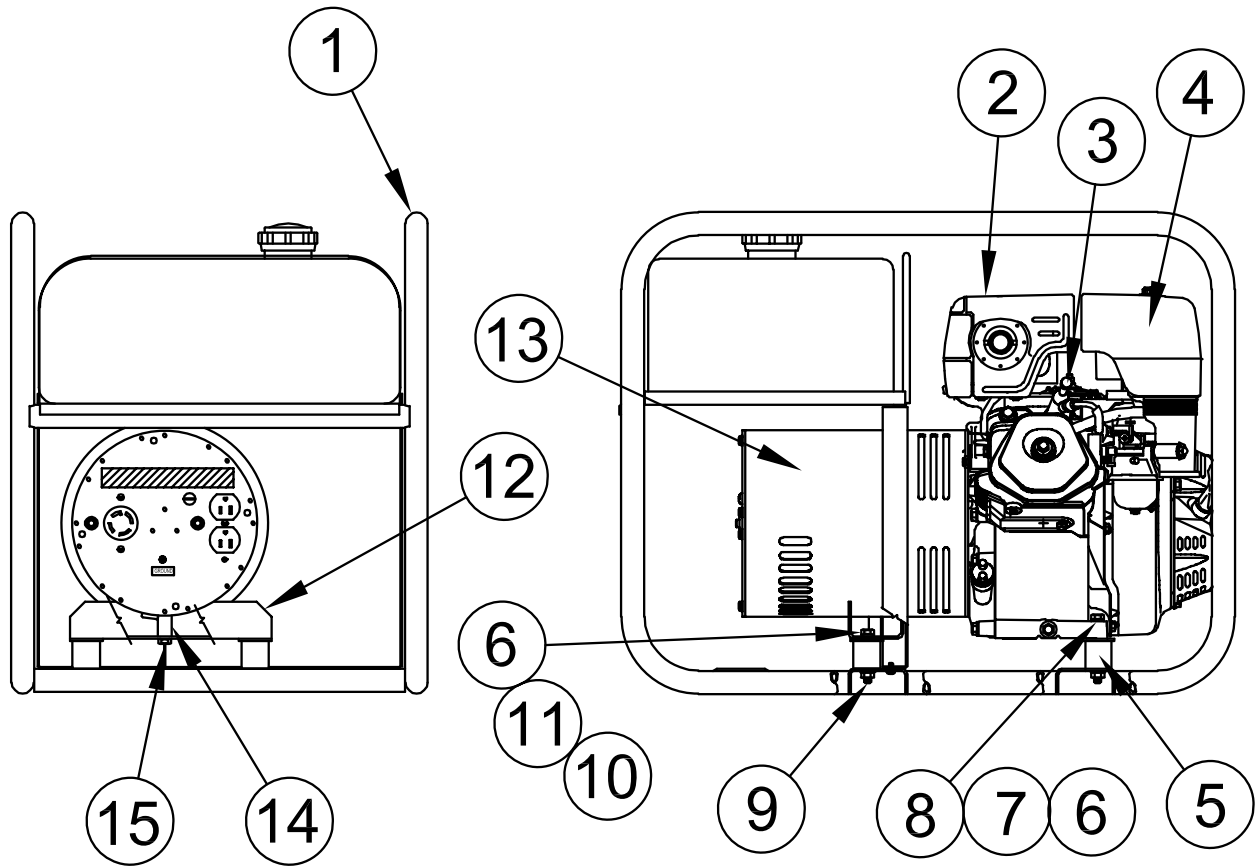


ILLUSTRATED PARTS LIST

DL5000H/B CSA DL5000H/B



COMPLETE UNIT ASSEMBLY

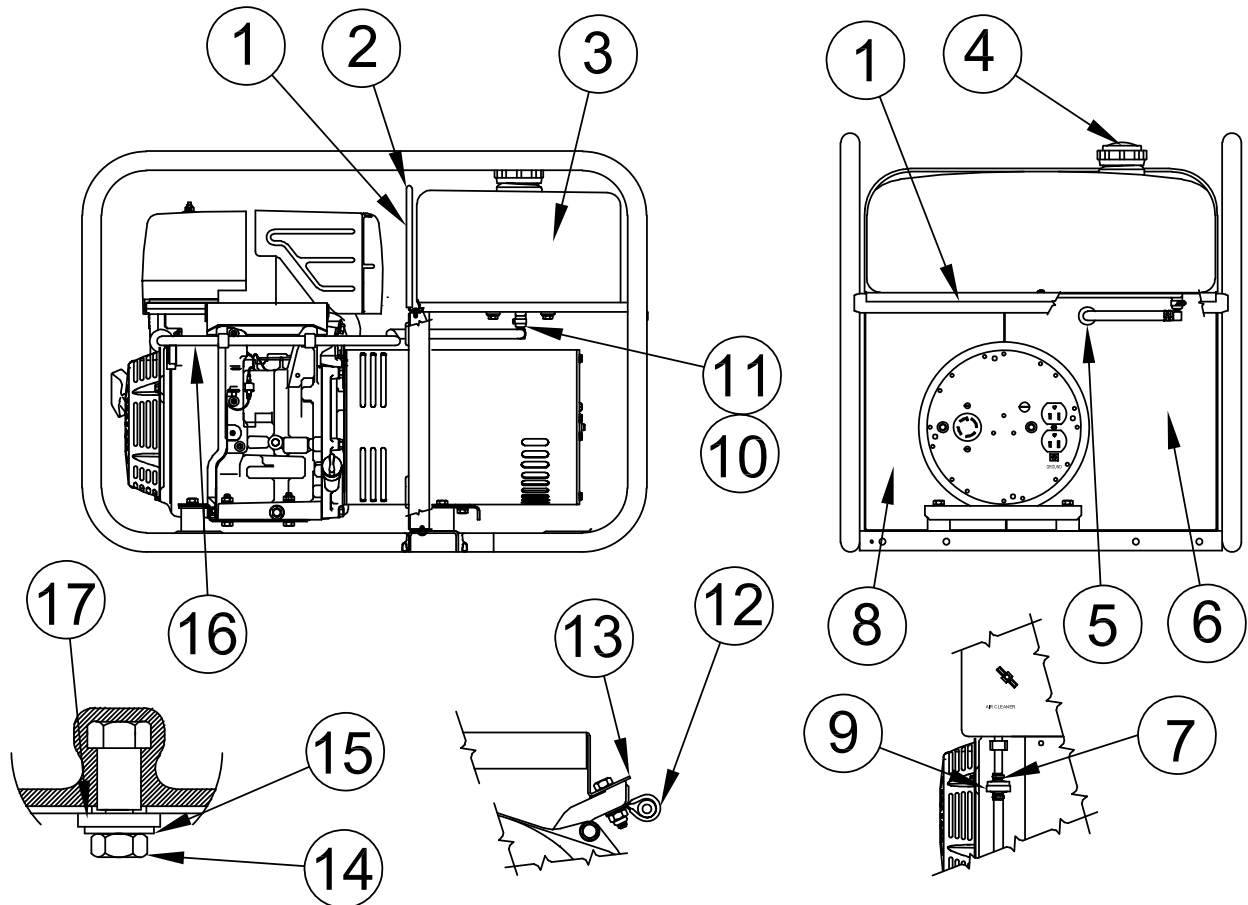


REF #	PART NUMBER	QTY	DESCRIPTION
1	63073-008	1	Cradle
2	15542-001	1	Engine Honda Model: GX270 R1VW12
3	BPR5EY	1*	Spark Plug
4	17211-ZE2-000	1**	Air Filter
5	64062-000	4	Shock Mounts
6	480-000	4	5/16 Split Lock Washer
7	468-000	2	5/16-18 X 1.5" Bolt
8	23760-002	2	1.25 OD X .344 ID Flat Washer
9	16249-000	4	5/16-18 Flange Nut
10	467-000	2	5/16-18 X 3/4" Bolt
11	526-000	2	5/16 Flat Washer
12	15545-005	1	Support Bracket
13	15359-039	1	Generator Assembly DL5000H/B

REF #	PART NUMBER	QTY	DESCRIPTION
	15359-037	1	Generator Assembly CSA DL5000H/B
14	62825-008	1	Tubular Split Spacer
15	62173-003	1	5/16-18 X 1.5" Screw

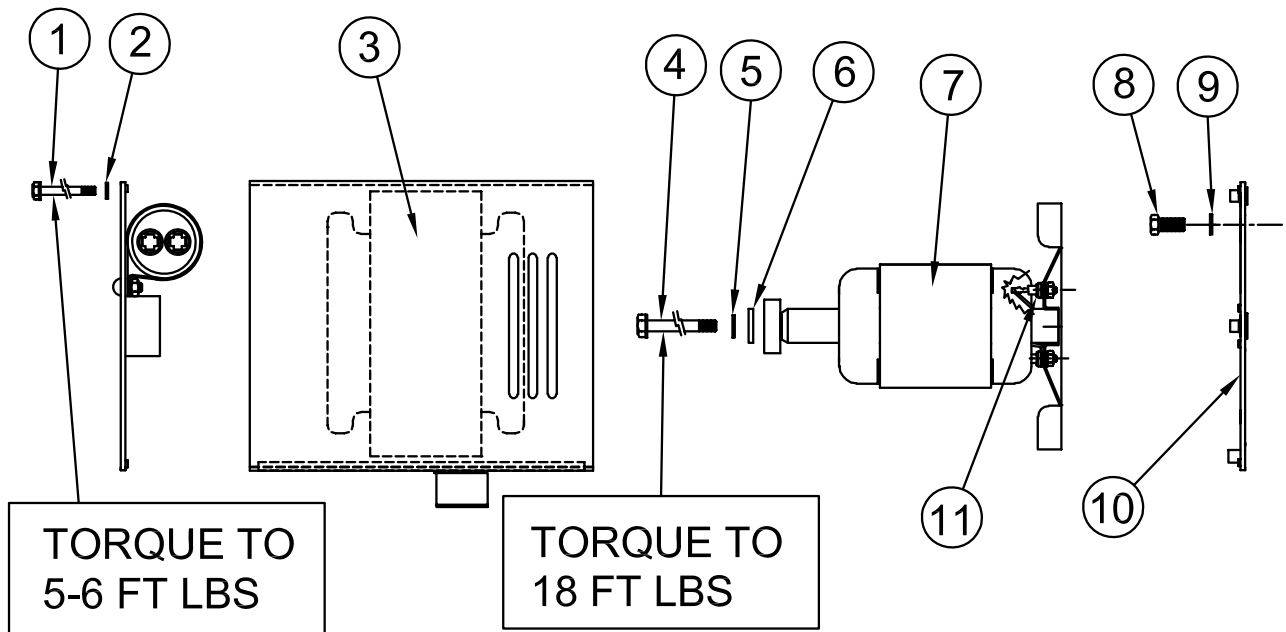
* NGK Part #
** Honda Part #

FUEL SYSTEM ASSEMBLY



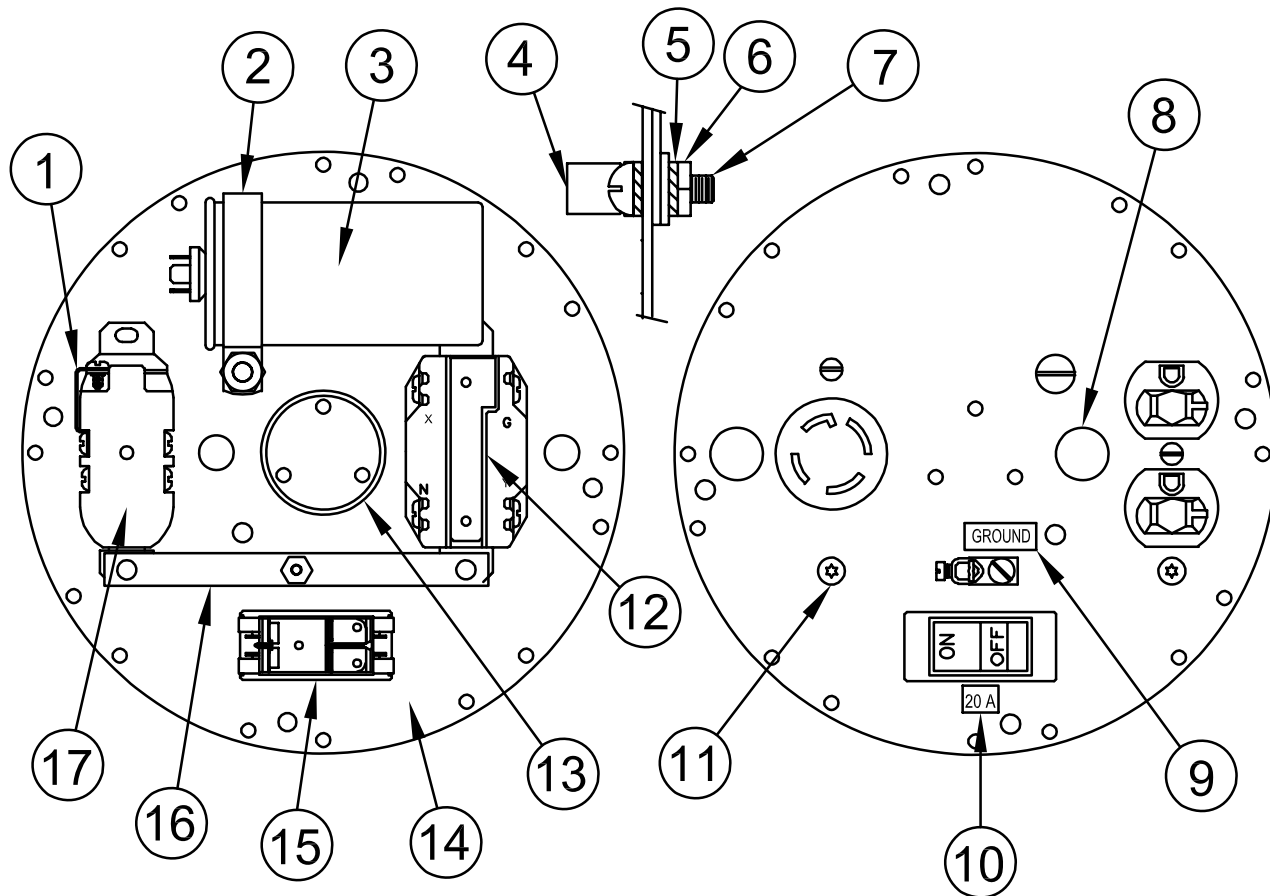
REF #	PART NUMBER	QTY	DESCRIPTION
1	15462-009	1	Fuel Tank Tray
2	58684-006	1	Edge Trim
3	64024-000	1	Fuel Tank
4	15482-000	1	Fuel Tank Cap
5	23917-000	1	Grommet
6	15222-010	1	Right Support Panel
7	62999-001	2	Fuel Hose Clamp
8	62496-000	1	Fuel Filter
9	15223-010	1	Left Support Panel
10	81018-009	1	Clamp
11	56879-000	1	90° Elbow
12	97391-002	2	Cushioned Clamp
13	15679-000	1	Governor Cover Plate
14	466-000	2	¼-20 X .75" Bolt
15	512-000	3	¼ Flat Washer
16	40078-016	1	Fuel Hose
17	16133-000	2	¾" X ¼" Leather Washer

GENERATOR ASSEMBLY



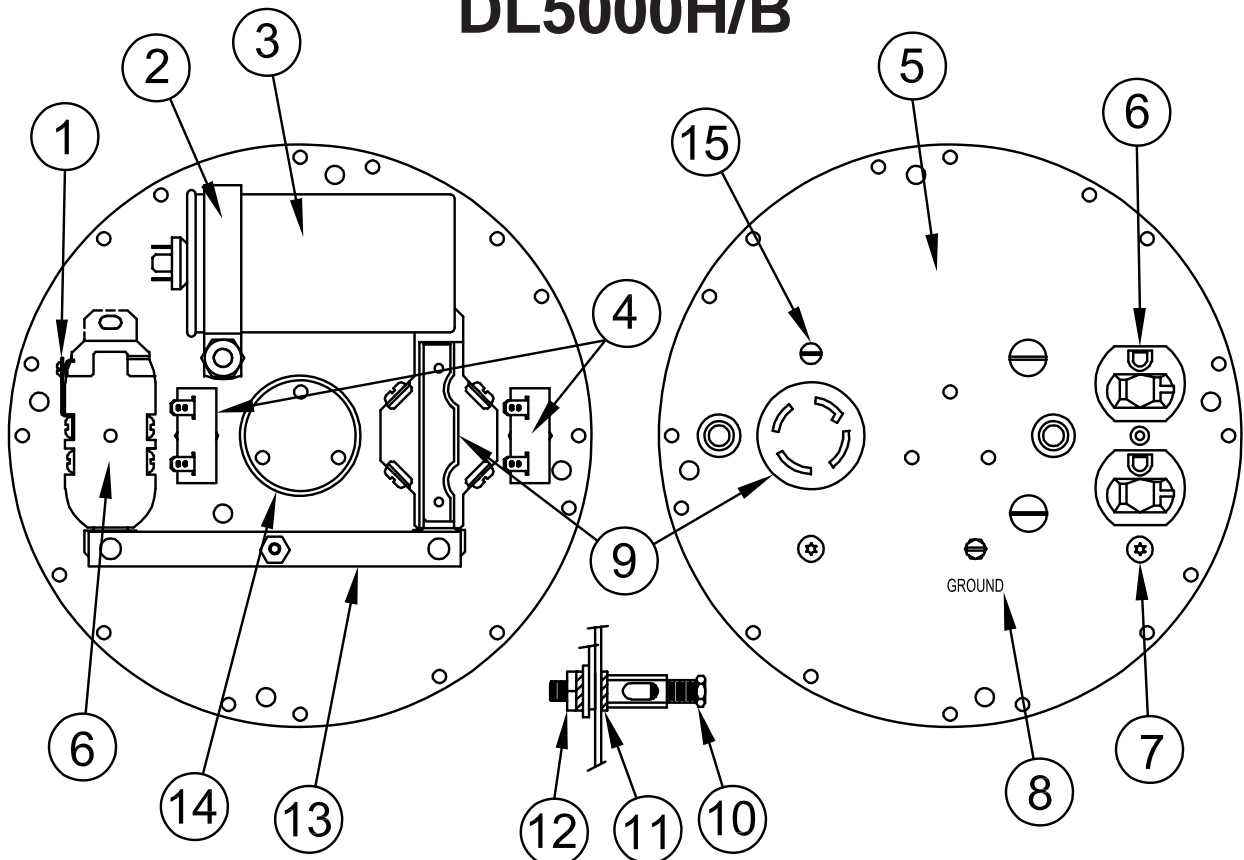
REF #	PART NUMBER	QTY	DESCRIPTION
1	15530-003	4	1/4-20 Bolt
2	479-000	4	1/4" Lock Washer
3	15359-437	1	Stator Assembly
4	15529-001	1	5/6-24 Bolt
5	480-000	1	Lock Washer
6	23558-000	1	Washer
7	15359-421	1	Rotor Assembly
8	464-000	4	3/8-16 X 3/4" Bolt
9	481-000	4	Lock Washer
10	15367-001	1	Engine Bracket
11	15047-001	1	Std. Polarity Diode

END BRACKET ASSEMBLY CSA DL5000H/B



REF #	PART NUMBER	QTY	DESCRIPTION
1	41387-009	1	Ground Strap
2	15374-002	1	Capacitor Strap
3	15051-000	1	Capacitor
4	48042-001	1	Ground Lug
5	21975-000	2	Lock Washer
6	456-000	1	#10-24 Hex Nut
7	419-000	1	#10-24 X 1/2" Screw
8	54847-002	2	Hole Plug
9	15750-000	1	Ground Decal
10	15983-002	1	20 Amp Decal
11	21698-001	2	#10 Type 2 Screw
12	97360-000	1	30A 120/240 Receptacle
13	15122-000	1	Tolerance Ring
14	15391-027	1	End Bracket
15	94387-006	1	20A Circuit Breaker
16	64045-025	1	Ground Strap
17	50766-000	1	20A 120V Receptacle

END BRACKET ASSEMBLY DL5000H/B



REF #	PART NUMBER	QTY	DESCRIPTION
1	41387-009	1	Ground Strap
2	15374-002	1	Capacitor Strap
3	15051-000	1	Capacitor
4	91286-001	2	20A 1-Pole Breaker
5	15391-026	1	End Bracket
6	50766-000	1	20A 120V Receptacle
7	21698-001	2	#10 Sheet Metal Screw
8	15750-000	1	Ground Decal
9	97360-000	1	30A 120/240V Receptacle
10	48042-001	1	Ground Lug
11	21975-000	2	#10 Int. Tooth Lock Washer
12	456-000	1	#10-24 Hex Nut
13	64045-025	1	Ground Strap
14	15122-000	1	Tolerance Ring
15	24988-000	2	#6-32 X 1/2" Screw

GENERATOR SPECIFICATIONS

Rotor Resistance	0.79 - 0.87 Ohms
G1 to N Resistance	0.61 - 0.67 Ohms
G3 to N Resistance	0.61 - 0.67 Ohms
Cap Leads Resistance	2.10 - 2.33 Ohms
AC Residual Voltage	7VAC G1 to N
Winding Spec.	SS1541
AC Connection	AC367

WINGO INC
A Division of DTE Dyna Technology Inc

225 S. CORDOVA AVE.
 LECENTER, MN 56057
 507-357-6821
 SERVICE DEPT.
 507-357-6831