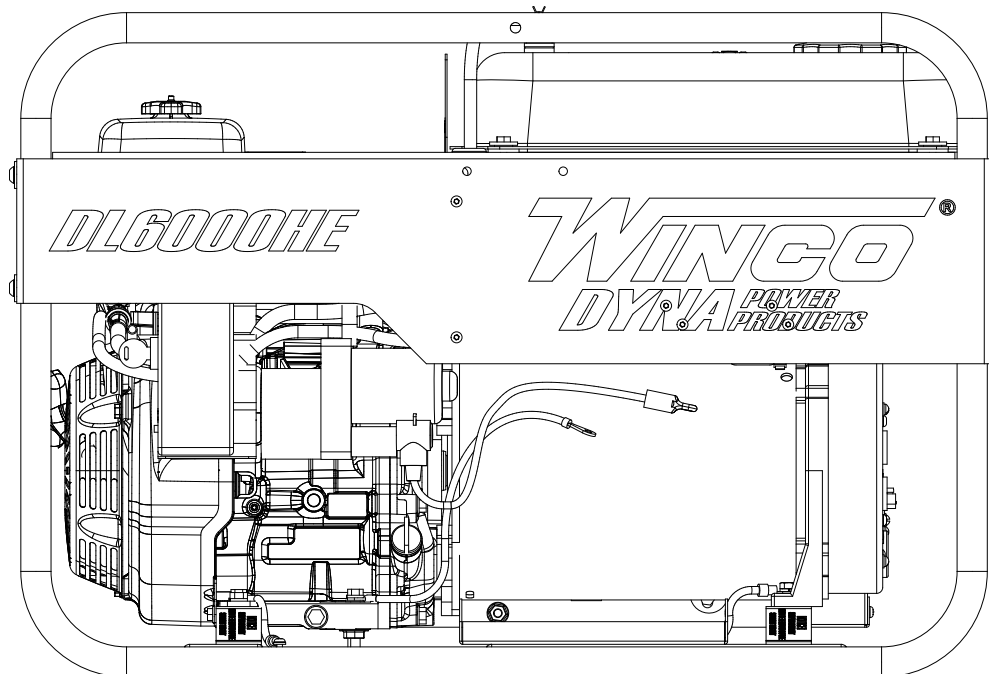




ILLUSTRATED PARTS LIST

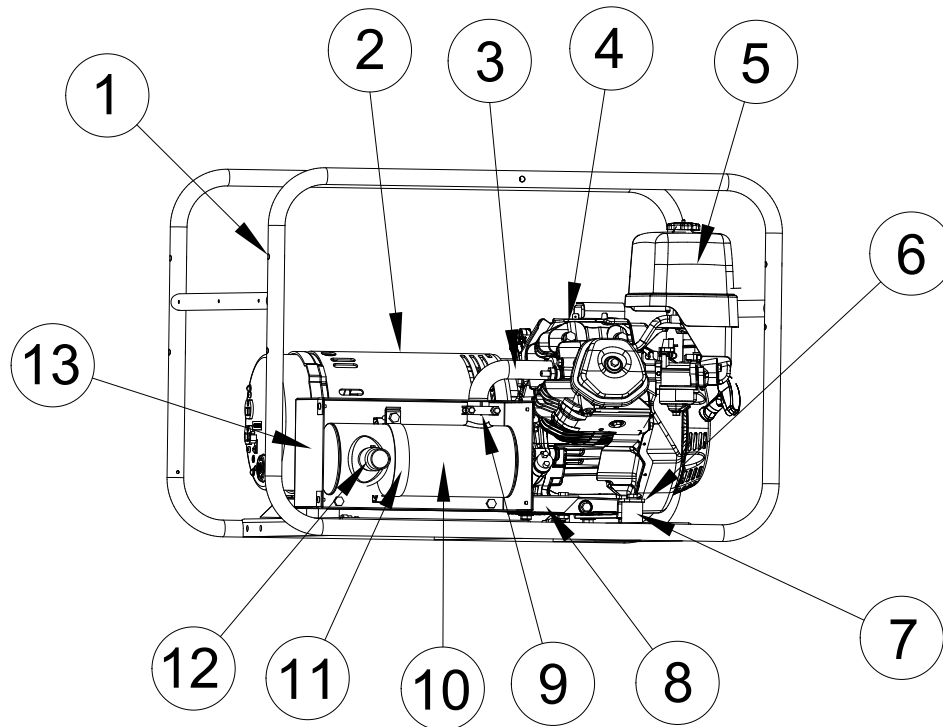
DL6000H/D

DL6000HE/E



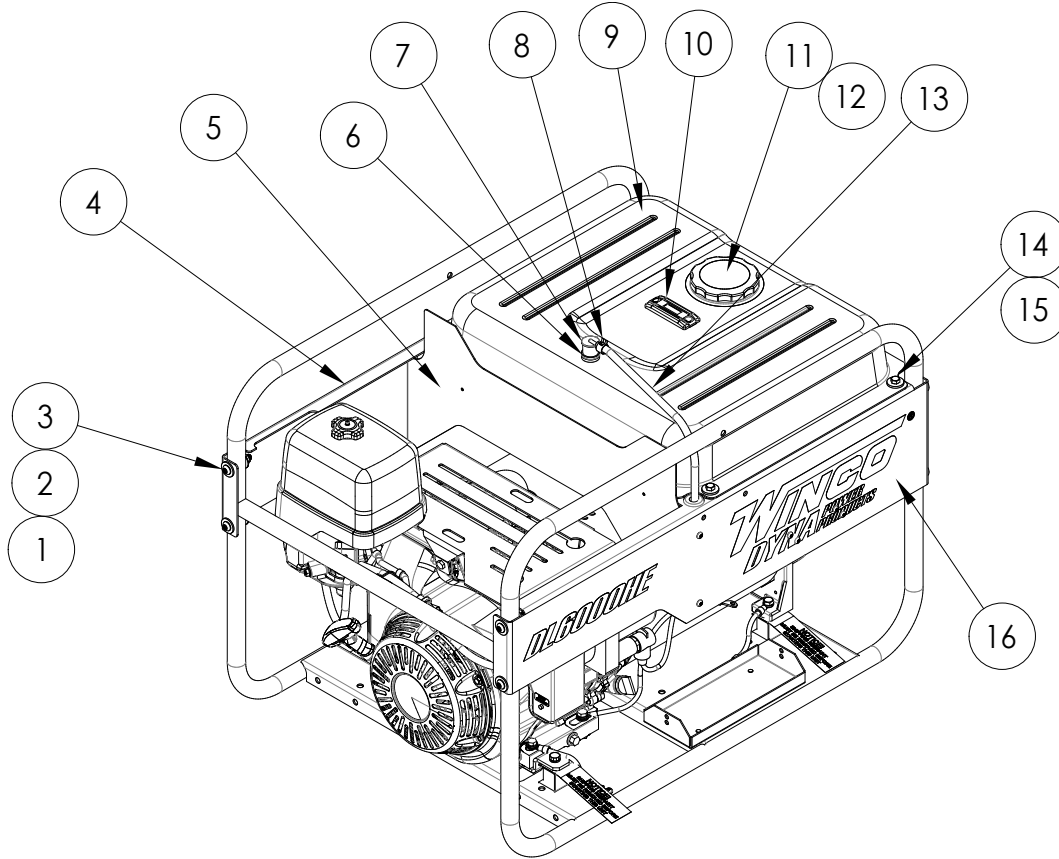
WINGCO INC.
225 S. CORDOVA AVE.
LE CENTER, MN 56057
(507) 357-6821
SERVICE DEPT.
(507) 357-6831
wincogen.com

ENGINE / GENERATOR ASSEMBLY



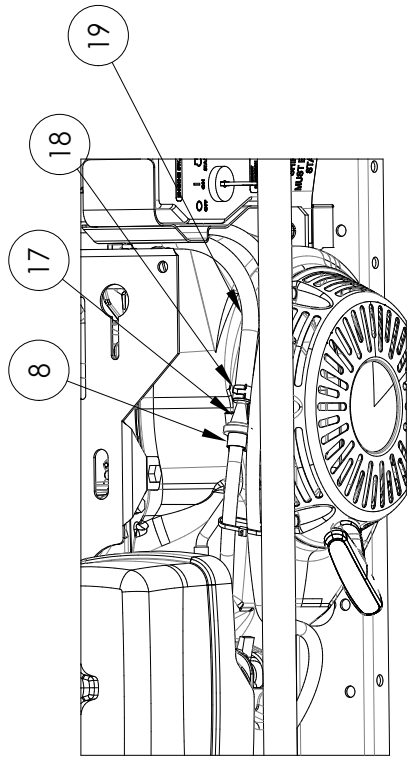
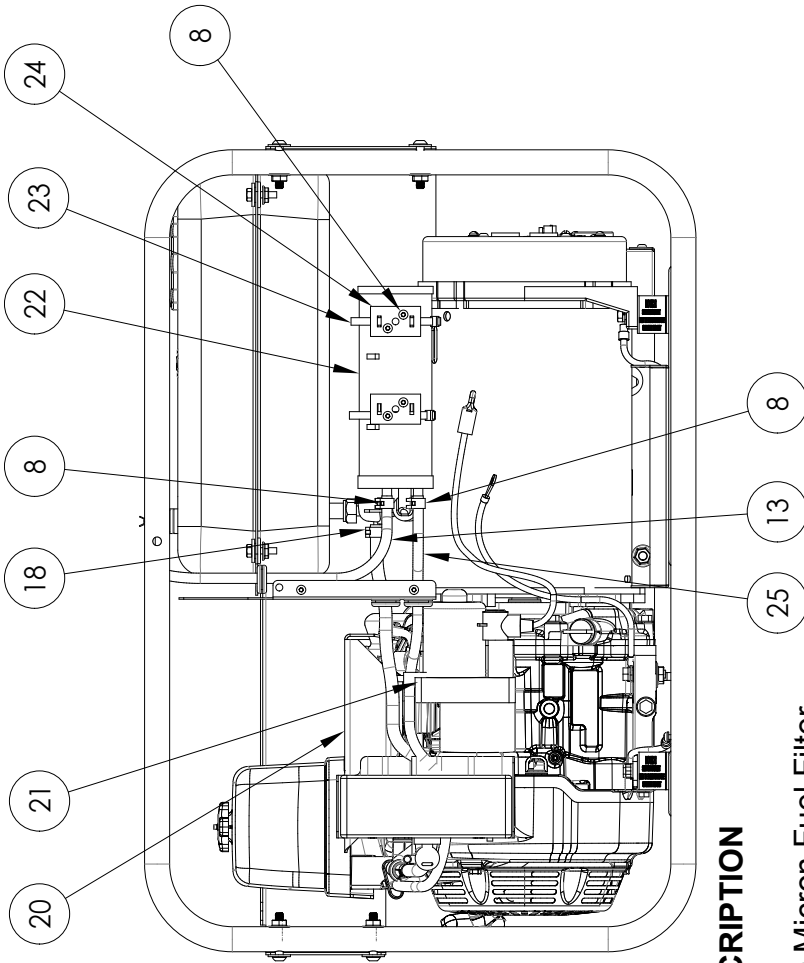
REF #	PART NUMBER	QTY	DESCRIPTION
1	63073-043	1	Cradle
2	15041-006	Reference	Generator Assembly
3	16479-004	1	Exhaust Manifold
4	15428-000	1	Engine, Honda GX340RT2VWE2
4	15467-000	1	Engine, Honda GX340RT2VDE2
5	17211-899-000	1*	Air Filter
6	15929-004	1	Engine Shock Mount Adapter
7	64062-000	4	Shock Mount
8	15687-018	1	Heat Shield Mounting Bracket
9	93489-018	1	Muffler Clamp
10	350590-11	1	Muffler
11	93484-012	1	Muffler Mounting Bracket
12	15769-002	1	Spark Arrestor
13	15687-013	1	Heat Shield
NI	BPR6ES	1*	NGK Spark Plug
NI	17211-899-000	1**	Air Cleaner
NI	15428-100	1	Keys for Engine (set of two)
*	NGK Part #		
**	Honda Part #		
NI	Not Illustrated		

FUEL SYSTEM ASSEMBLY



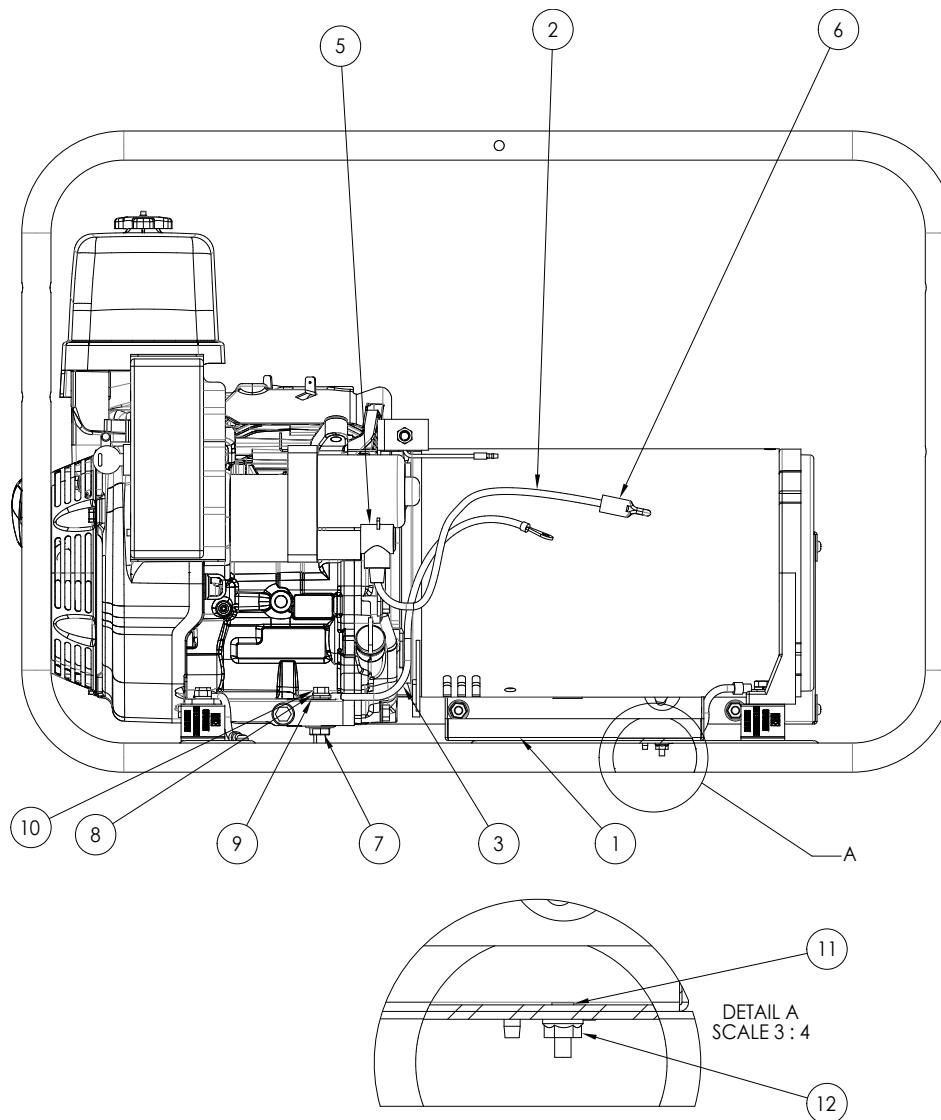
REF #	PART NUMBER	QTY	DESCRIPTION
1	16249-000	8	5/16"-18 Flange Nut
2	526-000	8	Washer
3	64858-004	8	5/16"-18 X 1 3/4" Screw
4	300217-3SDL6HE	1*	Right Side Rail
4	300217-3SDL6H	1**	Right Side Rail
5	15464-017	1	Generator Divider
6	80903-001	1	Slosh Valve Grommet
7	80903-000	1	Slosh Valve (revision A)
7	80903-002	1	Slosh Valve with Grommet (revision B)
8	62999-005	5	Hose Clamp .41 OD Geen
9	64024-013	1*	7 Gallon Steel Fuel Tank
*	Slosh valve with grommet (80903-002) is used with this fuel tank.		
10	64024-402	1	Fuel Level Gauge
11	64024-401	1	Sealed Fuel Cap
12	64024-403	1	Filter Inside Tank
13	40077-000	20"	3/16" Fuel Hose
14	64024-406	4	Rubber Bushing
15	64024-405	4	Anti-Crash Insert
16	300216-3SDL6HE	1*	Left Side Rail
16	300216-3SDL6H	1**	Left Side Rail
*	For Model DL6000HE/E		
**	For Model DL6000H/D		

FUEL SYSTEM ASSEMBLY CONTINUED



REF #	PART NUMBER	QTY	DESCRIPTION
17	62496-005	1	40-70 Micron Fuel Filter
18	62999-001	2	Hose Clamp .5 OD Red
19	40078-000	17"	1/4" Fuel Hose
20	15679-008S	1	Governor Cover
21	97391-003	1	Tube Clamp
22	80902-000	1	Carbon Canister
23	49975-013	2	Cable Tie
24	81902-000	2	Mounting Bracket
25	40077-000	38"	3/16" Fuel Hose

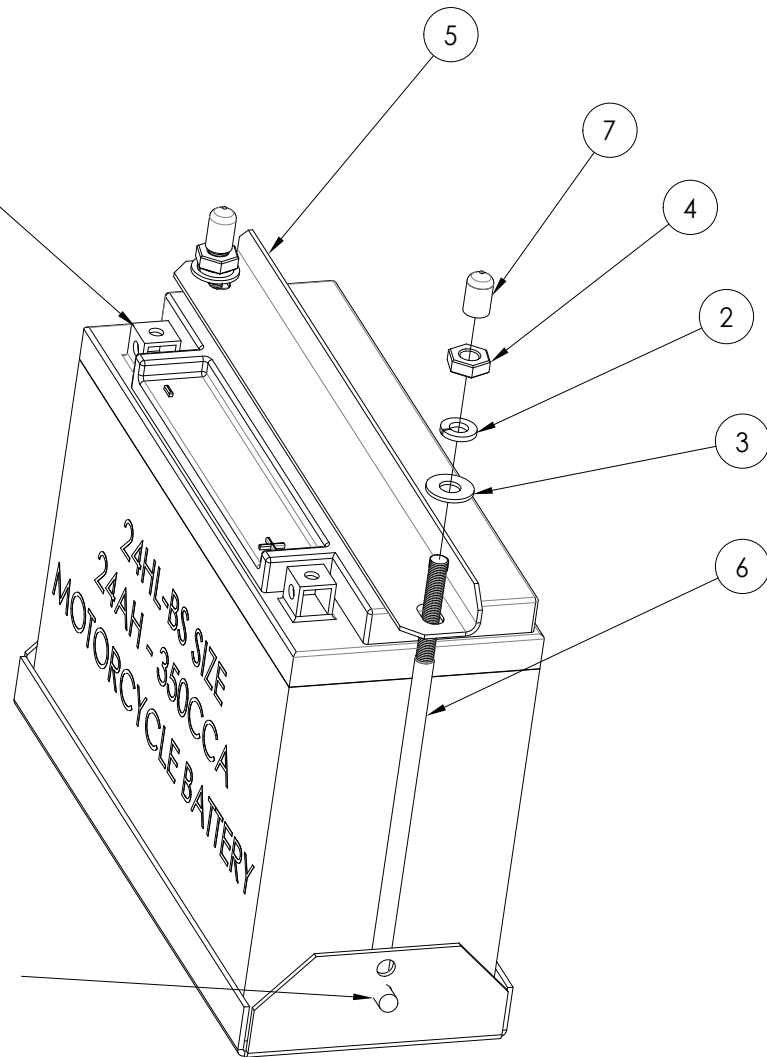
BATTERY INSTALLATION



REF #	PART NUMBER	QTY	DESCRIPTION
1	15671-011	1	Battery Tray
2	15767-014	1	Battery Positive (+) Cable
3	15767-030	1	Battery Negative (-) Cable
4	15807-003	1	Battery Hold Down Kit
5	16145-000	1	Terminal Insulator
6	16234-000	1	Cap Plug
7	16249-000	1	5/16-18 Flange Nut
8	480-000	1	5/16 Split Lock Washer
9	526-000	1	Washer
10	9416-000	1	5/16-18 X 1.75 Bolt
11	95568-000	2	10-24 X 5/8 Threaded Stud
12	99671-000	2	10-24 Hex Nut

BATTERY HOLD DOWN KIT (15807-003)

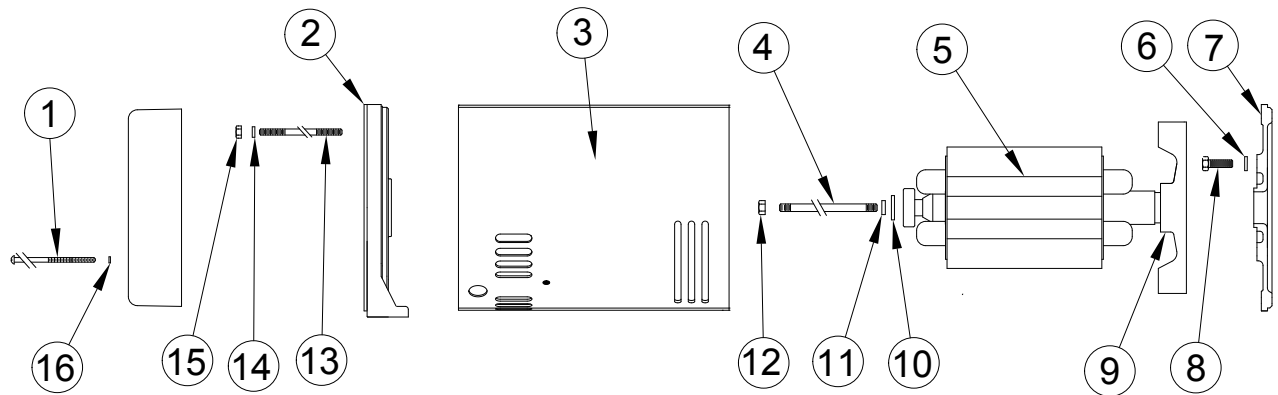
SCREW OR BOLT + NUT IS
TYPICALLY SUPPLIED WITH
BATTERY. A M6 METRIC
SCREW OR BOLT IS THE
COMMON SIZE USED.



LOWER HOLE IS TYPICAL FOR BATTERY
INSTALLATION.

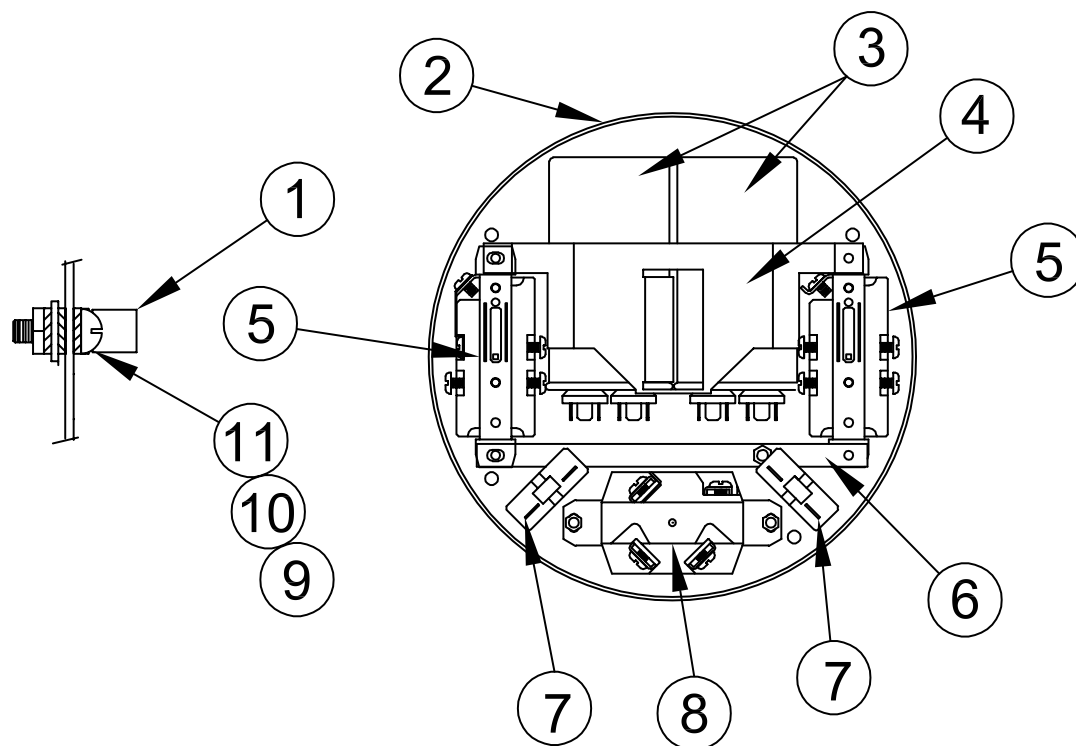
REF #	PART NUMBER	QTY	DESCRIPTION
2	479-000	2	Lock Washer
3	512-000	2	Washer
4	638-000	2	Hex Nut
5	64167-004	1	Hold Down Bracket
6	64240-002	2	Hold Down Rod
7	64278-000	2	Round Vinyl Cap

GENERATOR ASSEMBLY



REF #	PART NUMBER	QTY	DESCRIPTION
1	15013-000	4	Screw
2	15156--002	1	Bearing Bracket
3	15042-005	1	Stator Assembly
4	23197-009	1	Stud Bolt 5/16" - 24
5	15045-007	1	Rotor Assembly
6	481-000	4	Lock Washer
7	15008-001	1	Engine Bracket
8	91658-003	4	Bolt
9	15136-002	1*	Fan
10	23558-000	1	Washer
11	480-001	1	Lock Washer
12	15193-000	1	5/16" - 24 Nut
13	15068-008	4	Stud Bolt 5/16" - 20
14	479-000	4	Lock Washer
15	15192-00	4	1/4" - 20 Nut
16	21975-000	4	Lock Washer
NI	15047-001	1*	Standard Polarity Diode
NI	15047-002	1*	Reverse Polarity Diode
NI	50215-000	1*	Bearing
*	Part of Rotor Assembly		

END COVER ASSEMBLY



REF #	PART NUMBER	QTY	DESCRIPTION
1	48042-001	1	Ground Lug
2	15050-002	1	End Cover
3	15051-000	2	Capacitor, 40mfd, 370VAC
4	15088-000	1	Capacitor Strap
5	50766-000	2	20A 120V Receptacle
6	64045-029	1	Mounting Strap
7	91286-006	2	25A Circuit Breaker
8	97360-000	1	30A 120/240V Receptacle
9	419-000	1	#10-24 X 1/2" Screw
10	21975-000	3	#10 Lock Washer
11	456-000	1	#10-24 Nut
NI	15750-000	1	Decal, Ground
NI	41387-009	1	Ground Strap
NI	Not Illustrated		

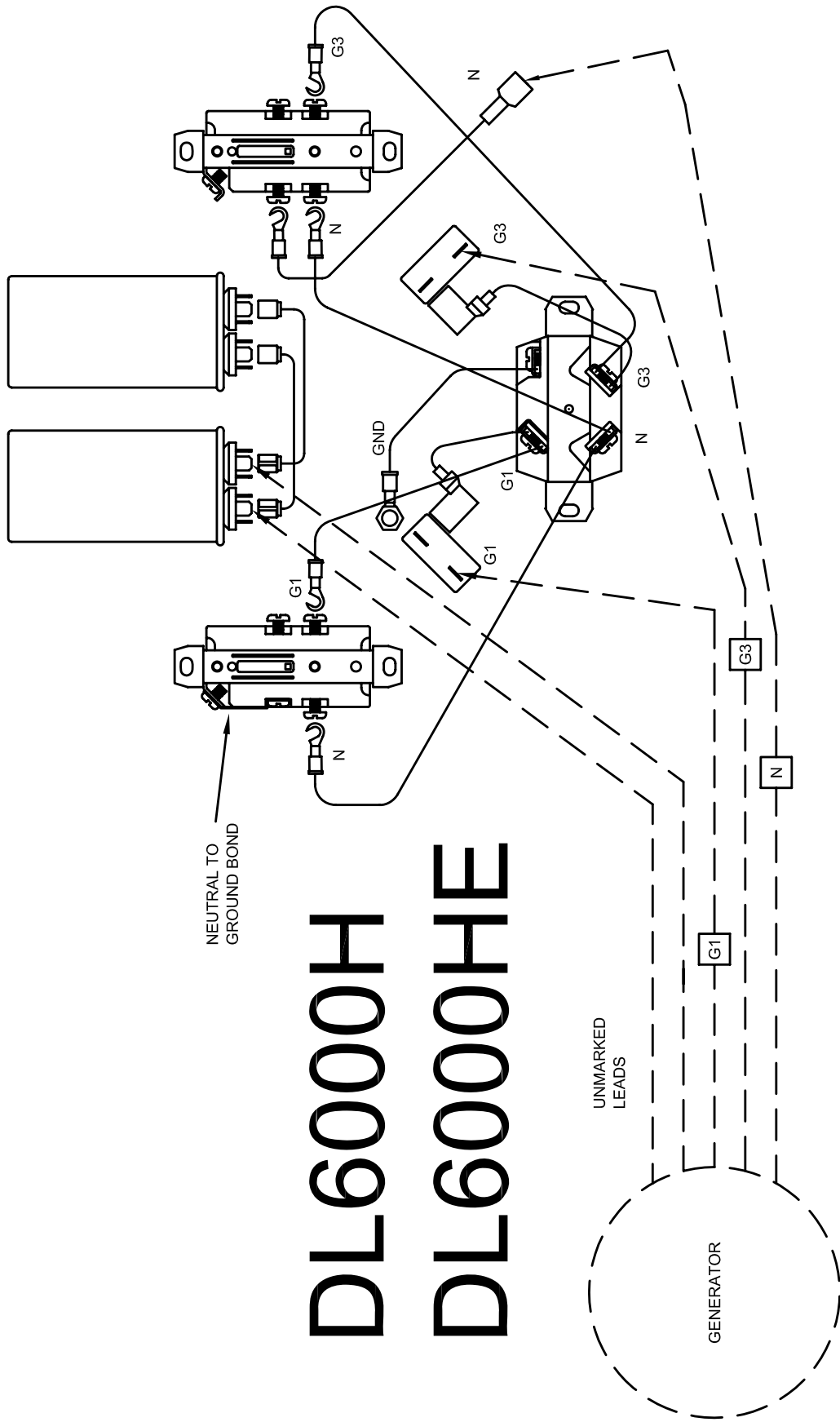
DECALS

REF #	PART NUMBER	QTY	DESCRIPTION
1	15209-000	1	Decal Set
2	15209-001	1*	Gasoline Decal
3	15209-002	1*	Danger CO2 Decal
4	15209-003	1*	Electrical Shock Decal
5	64918-000	2	Danger Use Outside Decal
6	63941-001	2	Hot Surface Decal
7	15209-013	1	Fuel Type Decal
8	15209-014	1	Check Oil Decal
9	63966-004	1	Winco Nameplate
*	Part of 15209-000		

WINDING SPECIFICATIONS

Rotor Resistance	0.95 to 1.05 Ohms
G1 to N Resistance	0.21 to 0.23 Ohms
G3 to N Resistance	0.22 to 0.25 Ohms
Capacitor Leads Resistance	0.53 to 0.58 Ohms
AC Residual Voltage	7VAC G1 to N
Winding Spec	SS1532

WIRING DIAGRAM



DL6000H DL6000HE