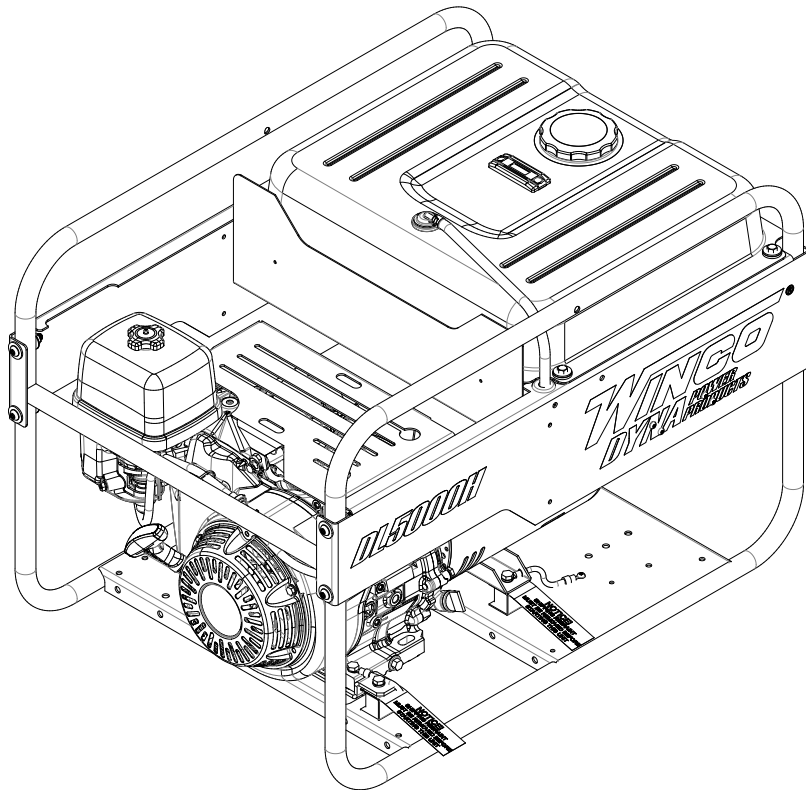


# **WINCO INC<sup>®</sup>**

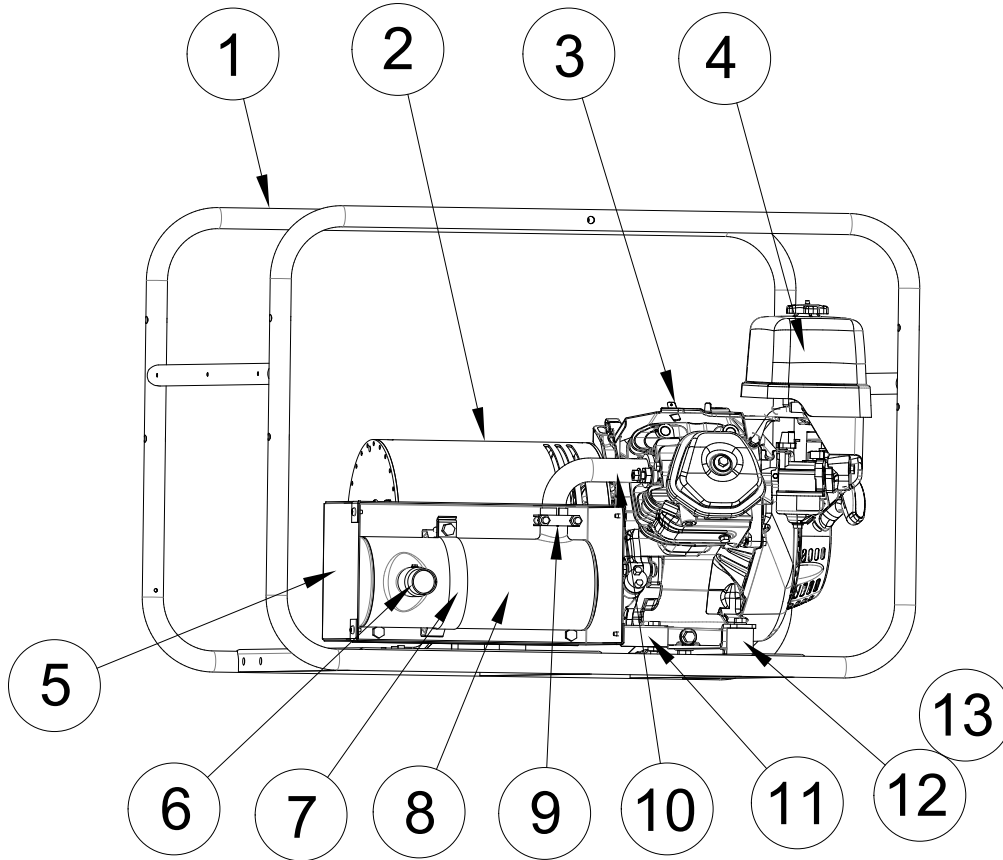
## **ILLUSTRATED PARTS LIST**

### **DL5000H/C**



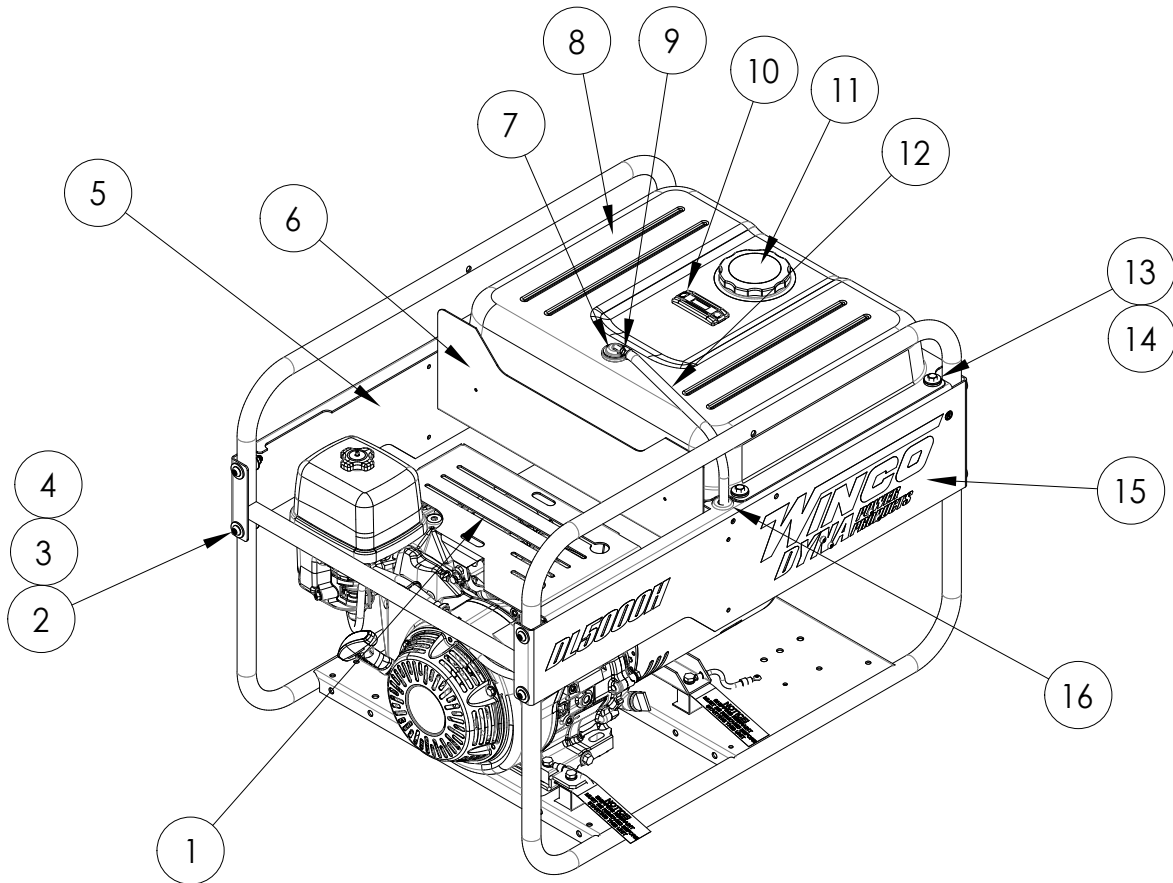
**WINCO INC.  
225 S. CORDOVA AVE.  
LE CENTER, MN 56057  
(507) 357-6821  
SERVICE DEPT.  
(507) 357-6831  
wincogen.com**

# ENGINE / GENERATOR ASSEMBLY



REF #	PART NUMBER	QTY	DESCRIPTION
1	63073-043	1	Cradle
2	15359-039	Reference	Generator
3	15542-001	1	Engine, Honda GX270 RT2VN2 Code: GCBGT
4	17210-ZE2-822	1**	Air Filter
5	15687-013	1	Muffler Heat Shield
6	15769-002	1	Spark Arrestor
7	93484-012	1	Muffler Mounting Bracket
8	350590-11	1	Muffler
9	93489-018	1	Muffler Clamp
10	16479-004	1	Exhaust Manifold
11	15687-019	1	Heat Shield Mounting Bracket
12	64062-000	4	Shock Mount
13	15929-004	1	Engine Shock Mount Adapter
NI	BPR6ES	1*	NGK Spark Plug
NI	18333-Z1C-801	1**	Manifold Gasket
NI	17218-ZE2-821	1**	Outer Air Filter
NI	16335-001	1	Generator Support Bracket
*	NGK Part #		
**	Honda Part #		
NI	Not Illustrated		

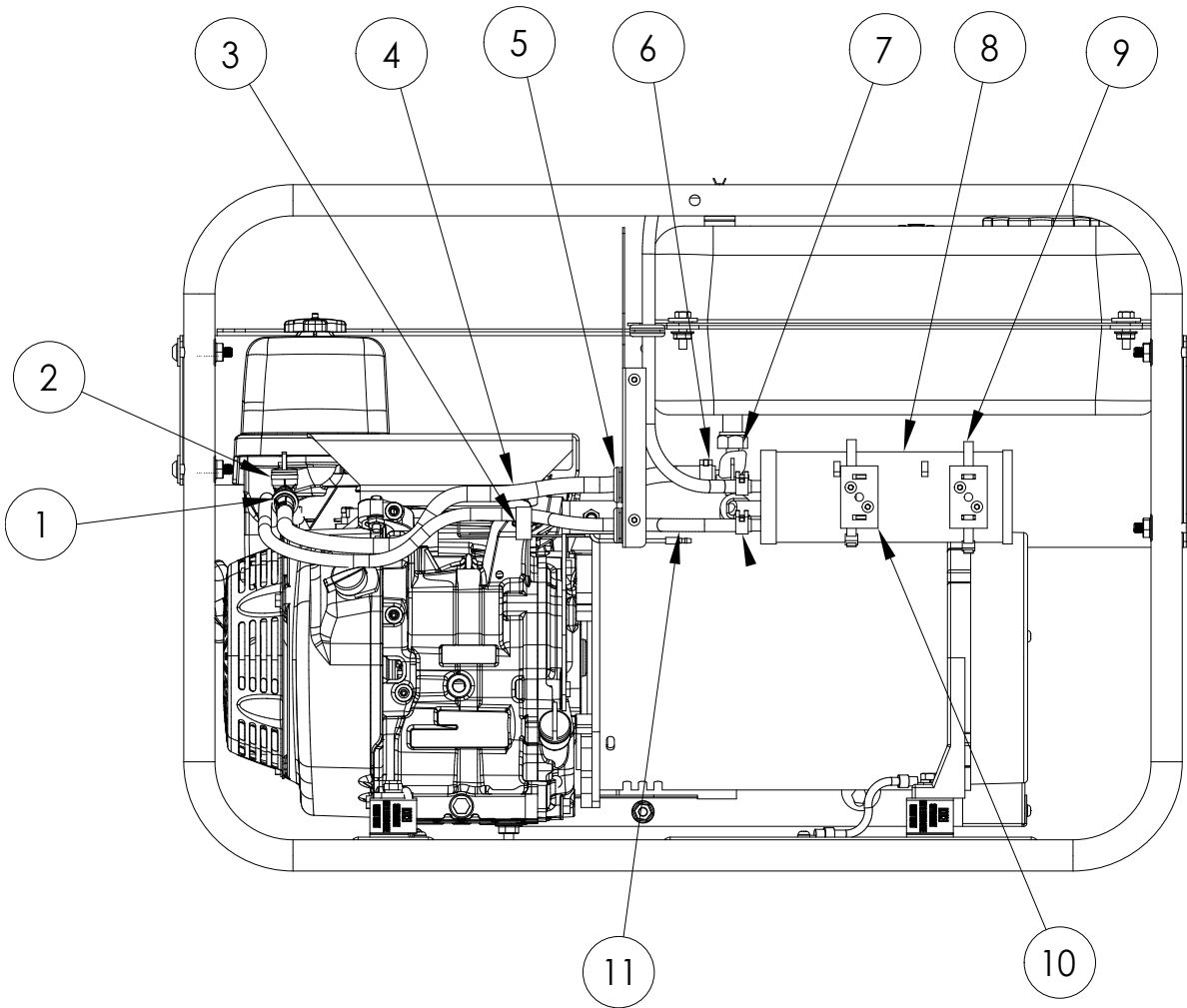
# FUEL SYSTEM ASSEMBLY



REF #	PART NUMBER	QTY	DESCRIPTION
1	15679-008S	1	Governor Cover
2	16249-000	8	5/16"-18 Flange Nut
3	526-000	8	Washer
4	64858-004	8	Button Head Screw
5	300217-3SDL5000H	1	Right Side Rail
6	15464-046	1	Fuel Tank Tray
7	80903-002	1	Slush Valve (short one)
7A	90903-000	1*	Slush Valve (tall one)
7B	80903-001	1*	Slush Valve Grommet
8	64024-013	1	7 Gallon Metal Fuel Tank
9	62999-005	4	.41 OD Green Hose Clamp
10	64024-402	1	Fuel Level Gauge
11	64024-401	1	Sealed Fuel Cap
12	40077-000	20"	3/16" Fuel Hose
13	64024-405	4	Anti-Crash Insert
14	64024-406	4	Rubber Bushing
15	300216-3SDL5000H	1	Left Side Rail
16	40730-000	1	Grommet
NI	64024-403	1	Fuel Filter in Tank
NI	Not Illustrated		

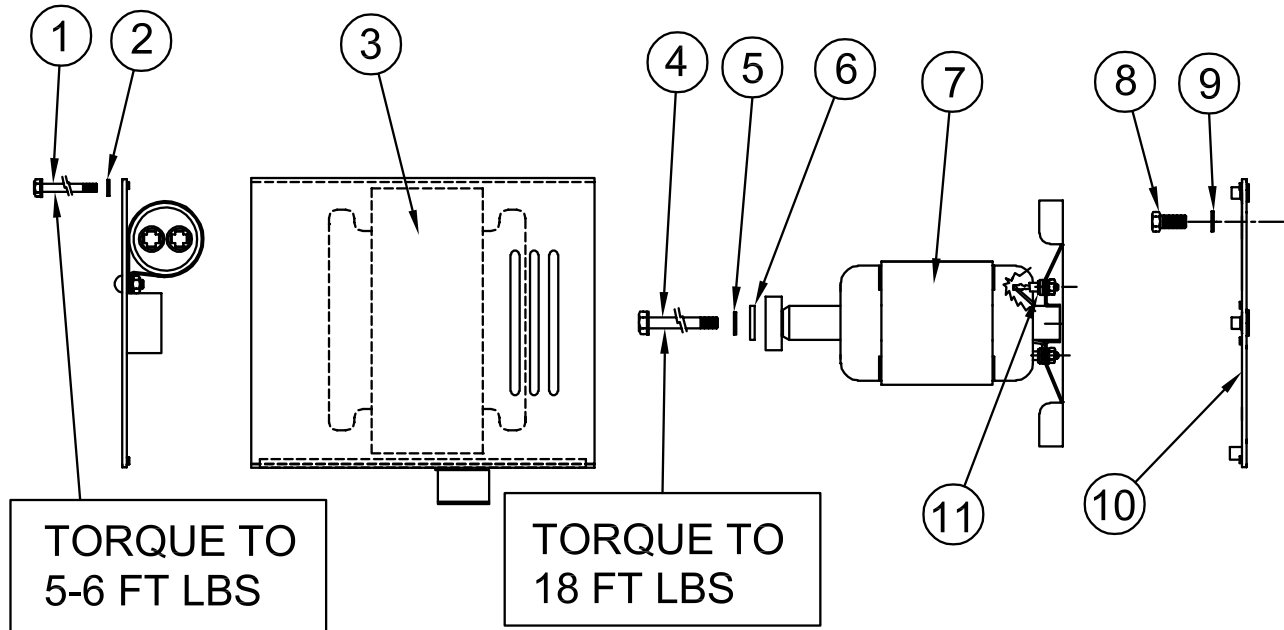
\* Used on gen-sets prior to July 2013 built date.

# FUEL SYSTEM ASSEMBLY



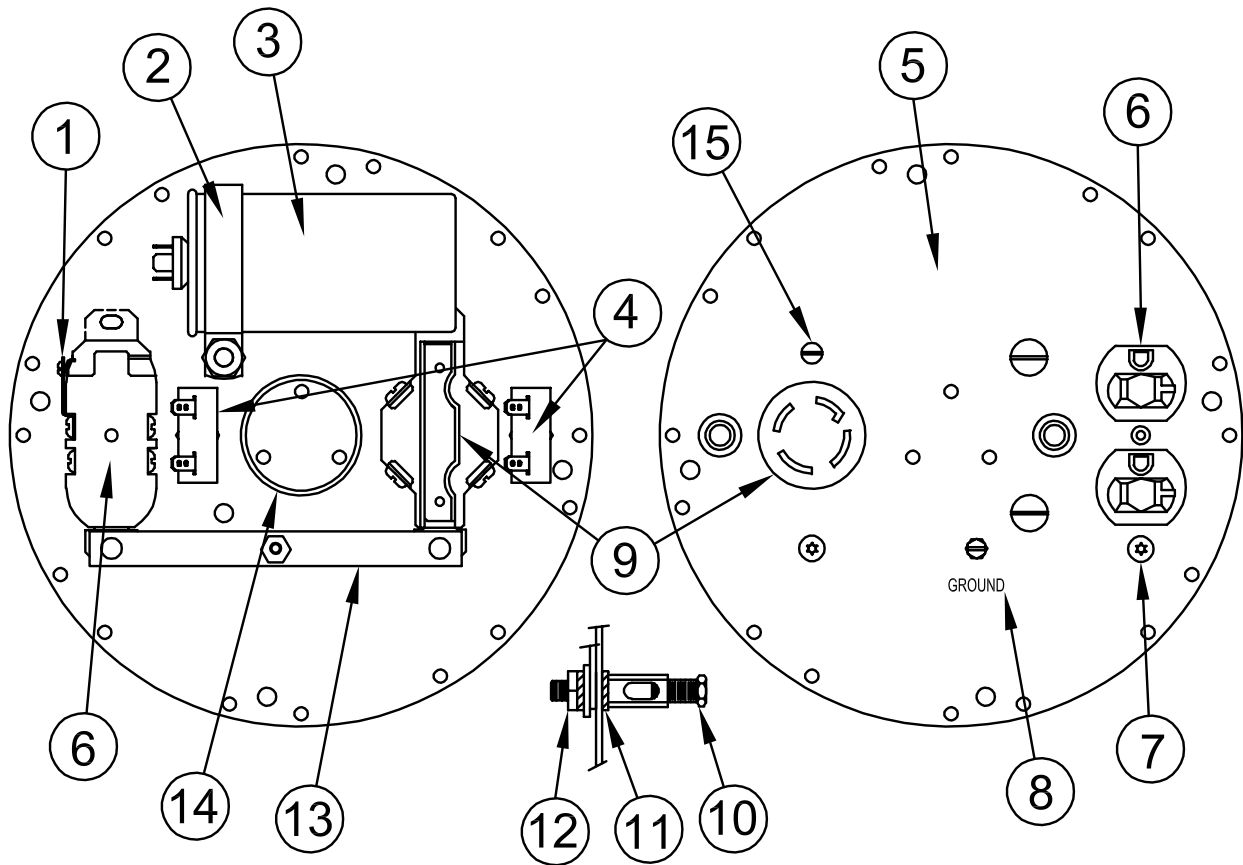
REF #	PART NUMBER	QTY	DESCRIPTION
1	62496-005	1	40-70 Micron Cone Filter
2	98771-005	1	Shut-Off Valve
3	97391-003	1	15/16" Tube Clamp
4	40078-000	17"	1/4" Fuel Hose
5	40730-000	3	Grommet
6	62999-001	4	.5 OD Red Hose Clamp
7	64024-404	1	Fuel Tank Shut-Off Valve
8	80902-000	1	Carbon Canister
9	49975-013	2	Cable Tie
10	81902-000	2	Mounting Bracket
11	40077-000	38"	3/16" Fuel Hose
NI	21698-001	8	Torx Screw
NI	81018-009	1	Hose Clamp
NI	Not Illustrated		

# GENERATOR ASSEMBLY



REF #	PART NUMBER	QTY	DESCRIPTION
1	15530-003	4	1/4-20 Bolt
2	479-000	4	1/4" Lock Washer
3	15359-437	1	Stator Assembly
4	15529-001	1	5/6-24 Bolt
5	480-000	1	Lock Washer
6	23558-000	1	Washer
7	15359-421	1	Rotor Assembly
8	464-000	4	3/8-16 X 3/4" Bolt
9	481-000	4	Lock Washer
10	15367-001	1	Engine Bracket
11	15047-001	1	Std. Polarity Diode

# END BRACKET ASSEMBLY

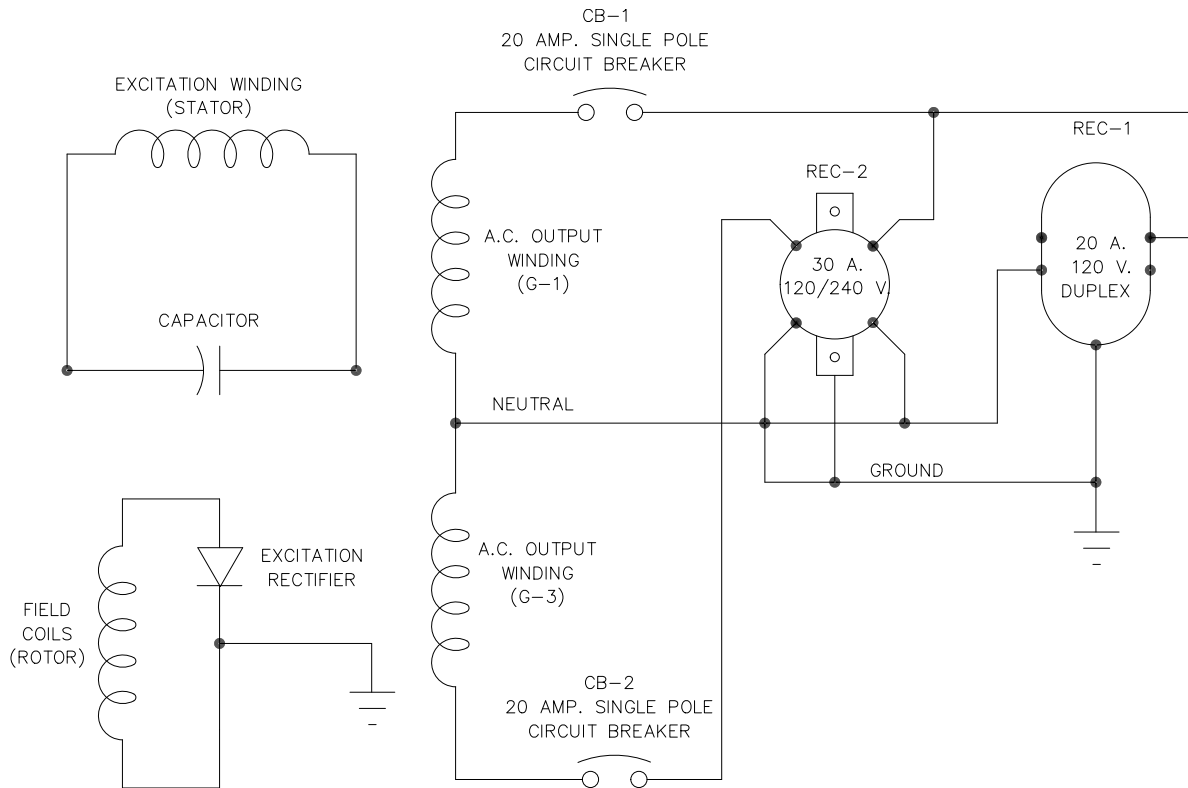


REF #	PART NUMBER	QTY	DESCRIPTION
1	41387-009	1	Ground Strap
2	15374-002	1	Capacitor Strap
3	15051-000	1	Capacitor
4	91286-001	2	20A 1-Pole Breaker
5	15391-026	1	End Bracket
6	50766-000	1	20A 120V Receptacle
7	21698-001	2	#10 Sheet Metal Screw
8	15750-000	1	Ground Decal
9	97360-000	1	30A 120/240V Receptacle
10	48042-001	1	Ground Lug
11	21975-000	2	#10 Int. Tooth Lock Washer
12	456-000	1	#10-24 Hex Nut
13	64045-025	1	Ground Strap
14	15122-000	1	Tolerance Ring
15	24988-000	2	#6-32 X 1/2" Screw

# DECALS

REF #	PART NUMBER	QTY	DESCRIPTION
1	15209-000	1	Decal Set
2	15209-001	1*	Gasoline Decal
3	15209-002	1*	Danger CO2 Decal
4	15209-003	1*	Electrical Shock Decal
5	64918-000	2	Danger Use Outside Decal
6	63941-001	2	Hot Surface Decal
7	15209-013	1	Fuel Type Decal
8	15209-014	1	Check Oil Decal
9	63966-004	1	Winco Nameplate
*	Part of 15209-000		

# WIRING DIAGRAM



## GENERATOR SPECIFICATIONS

<b>Rotor Resistance</b>	<b>0.79 - 0.87 Ohms</b>
<b>G1 to N Resistance</b>	<b>0.61 - 0.67 Ohms</b>
<b>G3 to N Resistance</b>	<b>0.61 - 0.67 Ohms</b>
<b>Cap Leads Resistance</b>	<b>2.10 - 2.33 Ohms</b>
<b>AC Residual Voltage</b>	<b>7VAC G1 to N</b>
<b>Winding Spec.</b>	<b>SS1541</b>
<b>AC Connection</b>	<b>AC367</b>