

240V 50 Amp
NEMA 6-50R
Outlet

Muffler

240V 50 Amp
Twistlock Outlet
Hubbell CS-6369

240V 20 Amp
NEMA L6-20R
Twistlock Outlet

120V 20 Amp
NEMA L5-20R
Twistlock Outlet

120V 30 Amp
NEMA L5-30R
Twistlock Outlet

120V 50 Amp
NEMA 5-50R
Outlet

DC Ammeter

Electronic
Converter

Fuel Filter

Primer Bulb

Fuel Gauge

Heavy Duty
2 Wheel Dolly

Fuel Fill
& Gauge

Starting
Battery
GP 24

120V 20 Amp
NEMA 5-20R
Outlet

GR LEGEND - B=BAT C=CONT. E=ENG. F=FUEL G=GEN. Z=MISC.

HP12000/A, CSAHP12000/A, HP12000/B

GR	DESCRIPTION	PART #	< HP/A	CSA	HP/B	>
			< QTY.	QTY.	QTY.	>
	<i>Key Start Switch - Onan Part</i>					
1 B*	BAT. CABLE ASY 1GA	22097-001	2	2	--	1
2 B*	BAT. CABLE ASY 1GA (POS)	22097-000	--	--	1	2
3 B*	BAT. CABLE ASY 1GA (NEG)	22097-005	--	--	1	3
4 B*	BATTERY - 12VGP24 410CCA	44066-000	1	1	1	4
5 B*	HOLD DOWN BRACKET, BATT.	63088-000	1	1	1	5
6 B*	HOLD DOWN BOLT	63470-000-1	2	2	2	6
7						7
8 C*	CIR.BRK.50A-1PL	91977-003	1	--	--	8
9 C*	CIR.BRK.30A-1PL	91977-005	--	1	1	9
10 C*	CIR.BRK.50A-2PL-240V	57030-000	2	1	1	10
11 C*	CIR.BRK.20A-2PL-240V	57030-001	1	1	1	11
12 C*	CIR.BRK.15A-1PL	91598-000	1	2	2	12
13 C*	CIR.BRK.20A-1PL	91598-001	3	2	2	13
14 C*	CONTROL BOX ASSY.	63206-000	1	--	--	14
15 C*	CONTROL BOX ASSY. CSA	63704-000	--	1	1	15
16 C*	FRONT PANEL - BARE	63035-000	1	--	--	16
17 C*	FRONT PANEL - BARE CSA	63035-001	--	1	1	17
18 C*	RECEPT NEMA 5-15R	24749-000	--	1	1	18
19 C*	RECEPT NEMA 5-20R	50766-000	1	--	--	19
20 C*	RECEPT NEMA 6-50R	57325-000	1	1	1	20
21 C*	RECEPT NEMA L5-20R	56279-000	2	2	2	21
22 C*	RECEPT NEMA L5-30R	56359-000	1	1	1	22
23 C*	RECEPT NEMA L6-20R	56281-000	1	1	1	23
24 C*	RECEPT NEMA 5-50R	54545-000	1	1	1	24
25 C*	RECEPT SPL-125/250V 50A	91889-000	1	1	1	25
26 C*	CONSERVER MODULE	48574-000	1	1	1	26
27 C*	ELECTROMAGNET, CONSERVER	15182-000	1	1	1	27
28 C*	BRACKET, CONSERVER	63230-000	1	1	--	28
29 C*	LEVER, CONSERVER	63229-000	1	1	--	29
30 C*	LEVER, CONSERVER	98188-000	--	--	1	30
31 C*	ELECTROMAGNET, CONSERVER	58683-000	1	1	1	31
32 C*	RESISTOR, CONS. 150/50W	48583-000	1	1	1	32
33 C*	SWITCH, CONSERVER-SPST	62392-000	1	1	1	33
34 C	TRANSFORMER, CONSERVER	63104-000	1	1	1	34
35 C	AMMETER - DC CHARGE	62394-000	1	1	1	35
36 C*	START SWITCH (ENGINE MFR)	-----	1	1	1	36
37						37
38 E	ENG WIRING HARNESS	64468-000	--	--	1	38
39 E*	ENG-KAWASAKI KF-200	63392-000	1	1	--	39
40 E*	ENG-ONAN P-220	64209-000	--	--	1	40
41 E*	EXHAUST SYSTEM INST.	63305-000	1	1	--	41
42 E*	EXHAUST SYSTEM INST.	64433-000	--	--	1	42
43 E	MUFFLER	63208-000	1	1	--	43
44 E	MUFFLER	61620-000	--	--	1	44
45 E	MUFFLER GUARD	63062-000	1	1	--	45
46 E	MUFFLER GUARD	64436-000	--	--	1	46

GR LEGEND - B=BAT C=CONT. E=ENG. F=FUEL G=GEN. Z=MISC.

HP12000/A, CSAHP12000/A, HP12000/B

GR	DESCRIPTION	PART #	< HP/A	CSA	HP/B	>
			QTY.	QTY.	QTY.	
47 E	WOVEN EXH. TAPE (FT)	97274-000	--	--	16	47
48 E*	EXHAUST MANIFOLD WELD.	64434-000	--	--	1	48
49 E*	EXHAUST ADAPTER	63144-000	1	1	--	49
50						50
51 F*	PRIMER, FUEL	62391-000	1	1	1	51
52 F*	FUEL FILTER	62496-000	1	1	--	52
53 F*	FUEL TANK	63207-000	1	1	1	53
54 F	HOSE- 1/4ID RB (IN)	40078-000	19	19	26	54
55						55
56 G*	ARM/HUB ASSY. (-3) 1PH	63252-001	1	1	--	56
57 G*	ARM/HUB ASSY. (-17) 3PH	98141-000	--	--	1	57
58 G*	SPECIAL STUD (THRU BOLT)	63210-000	1	1	--	58
59 G*	SPECIAL STUD (THRU BOLT)	98124-000	--	--	1	59
60 G*	BR HLDR & RACK ASSY -1PH	63182-000	1	1	--	60
61 G*	BR HLDR & RACK ASSY -1PH	63182-001	1	1	--	61
62 G*	BR HLDR & RACK ASSY -3PH	63940-000	--	--	1	62
63 G*	BR HLDR & RACK ASSY -3PH	63940-001	--	--	1	63
64 G*	BRUSH ASSY. - AC	24981-000	9	9	16	64
65 G*	BRUSH HLDR MTG PLATE	53975-000	6	6	6	65
66 G*	BRUSH HOLDER - AC	23500-402	9	9	16	66
67 G*	CAPACITOR ASSY.	63324-000	1	1	--	67
68 G*	CAPACITOR ASSY.	41221-000	--	--	3	68
69 G*	FAN ASSY.	23404-000	1	1	1	69
70 G*	FIBER SPACER	23532-000	14	14	16	70
71 G*	FIELD COIL ASSY. -1PH(L)	63061-000	1	1	--	71
72 G*	FIELD COIL ASSY. -1PH(R)	63061-001	1	--	1	72
73 G*	FIELD COIL ASSY. -3PH(L)	63938-000	1	1	1	73
74 G*	FIELD COIL ASSY. -3PH(R)	63938-001	--	--	1	74
75 G*	FLD RING & BRKT ASY	63212-000	1	1	--	75
76 G*	FLD RING & BRKT ASY	97288-000	--	--	1	76
77 G*	FLD SHL & COIL ASSY -1PH	63205-000	1	1	--	77
78 G*	FLD SHL & COIL ASSY -3PH	63939-000	--	--	1	78
79 G*	NOTCHED BEARING	59062-000	1	1	1	79
80 G*	POLE SHOE ASSY 8"	43473-000	2	2	2	80
81 G*	POLE SHOE RETAINER -1PH	43474-000	1	1	--	81
82 G*	POLE SHOE RETAINER -3PH	63937-000	--	--	1	82
83 G*	RECTIFIER	91452-000	1	1	1	83
84 G*	SLIP RING - 2 RINGS	50742-000	2	2	2	84
85 G*	WELDED END CVR ASSY	55438-010	1	--	--	85
86 G*	WELDED END CVR ASSY	55438-013	--	1	--	86
87 G*	WELDED END CVR ASSY	64437-000	--	--	1	87
88						88
89 Z	CRADLE ASSEMBLY	62939-000	1	1	--	89
90 Z	CRADLE ASSEMBLY	64418-000	--	--	1	90
91 Z	DOLLY KIT - 2 WHEEL	63307-000	1	1	1	91
92 Z	TOOL BOX	63303-000	1	1	--	92

GR LEGEND - B=BAT C=CONT. E=ENG. F=FUEL G=GEN. Z=MISC.

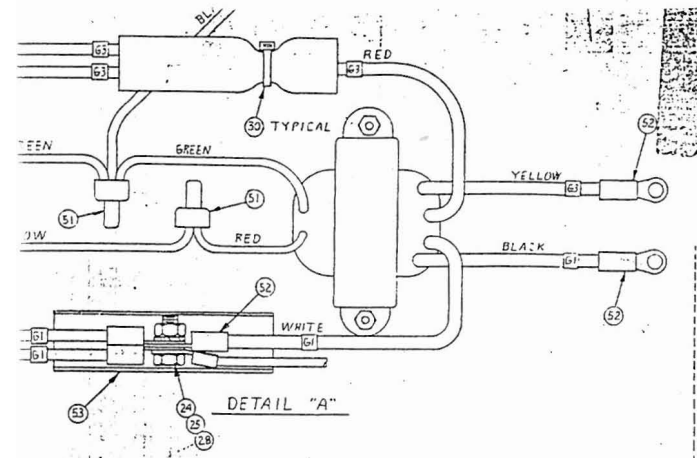
HP12000/A, CSAHP12000/A, HP12000/B

GR	DESCRIPTION	PART #	<HP/A	CSA	HP/B	>
			<QTY.	QTY.	QTY.	>
93	Z* COMPLETE UNIT ASSEMBLY	63200-000	1	--	--	93
94	Z* COMPLETE UNIT ASSEMBLY	63705-000	--	1	--	94
95	Z* COMPLETE UNIT ASSEMBLY	64417-000	--	--	1	95
96						96
97	** ENGINE OPERATOR'S MANUAL	63392-00X	1	1	--	97
98	** ENGINE OPERATOR'S MANUAL	64209-00X	--	--	1	98
99	** UNIT OPERATOR'S MANUAL	60706-036	1	1	--	99
100	** UNIT OPERATOR'S MANUAL	60706-104	--	--	1	100

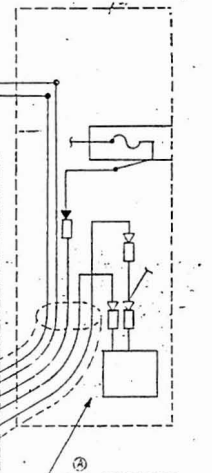
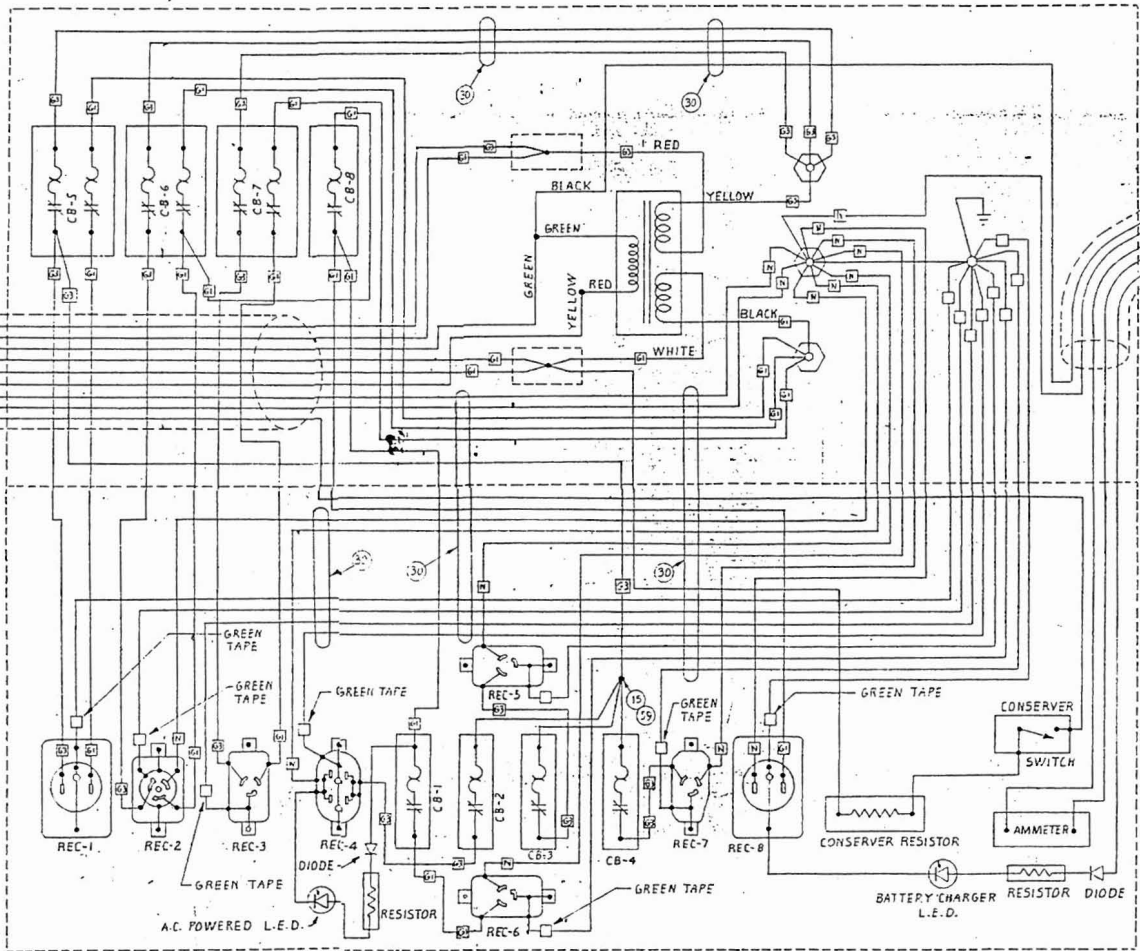
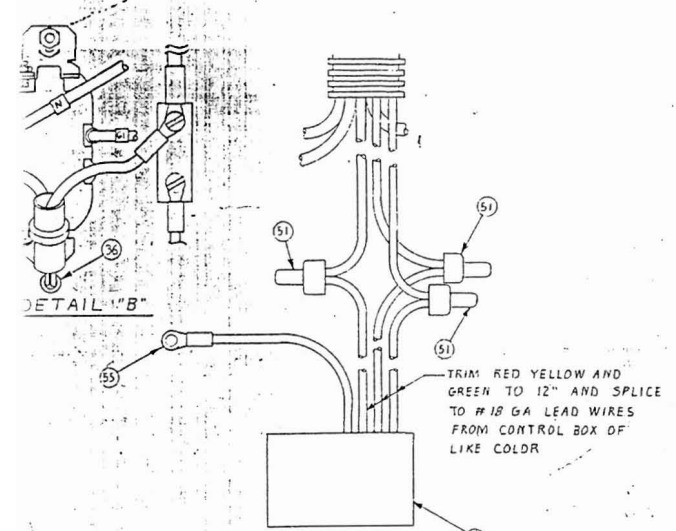
FILTERS	ONAN P/N	ENERGX P/N
OIL (LUBE)	122-0645	N/A
AIR (FOAM)	140-1496	N/A
AIR (PAPER)	140-1228	N/A
FUEL (INLINE)	149-2005	62476-000

	HP12000/A	CSAHP12000/A	HP12000/B
COMPLETE UNIT -	63200-000	63705-000	64417-000
AC WIRING -	63206-000	63704-000	63704-000
DC WIRING -	63648-000	63702-000	64468-000
CONTROL BOX -	63206-000	63704-000	63704-000
CONSERVER INST. -	63469-000	63469-000	98187-001
ENG GEN SET -	63309-000	63309-001	64425-000
GEN. PARTS UNA.-	63199-000	63199-001	98129-000
BR.RACK WIRING -	63199-000	63199-001	98129-000
AC RESIDUAL VOLTS	7.0 VAC L-L	7.0 VAC L-L	7.0 VAC L-L
AC OUT- 12VDC	200 VAC L-L	200 VAC L-L	200 VAC L-L
FIELD RESISTANCE	49.7 OHMS	49.7 OHMS	26.5 OHMS
WINDING SPEC. (SS#)	1503	1503	1525
ARM. CONNECTION (AC#)	236	236	362

LCP Module - 5-Leads & Rubber Holder



TO GENERATOR



SEE DRAWING C-63648 FOR LOW OIL PRESSURE SHUTDOWN INSTALLATION AND CHARGE INDICATOR CONNECTION.

NOTE:
 1. ITEM NO CALLED OUT ON THIS DRAWING WILL BE FOUND IN PARTS LIST ON DRAWING D-63206
 2. USE CABLE TIES, ITEM 50, TO BUNDLE LEAD WIRES ROUTING THEM AWAY FROM SHARP EDGES AND COMPONENTS WHICH GET HOT (TRANSFORMERS, RESISTORS, ETC.) OR OTHER PARTS WHICH MIGHT CAUSE DAMAGE TO INSULATION.

RELEASED FOR PRODUCTION
 AUG 18 1952
 WINCO INC.

D-63463

REV	DATE	BY	CHKD	APP'D	DESCRIPTION
1	ADDED (10) (11)				
2	ADDED (10) (11)				
3	ADDED (10) (11)				
4	ADDED (10) (11)				
5	ADDED (10) (11)				
6	ADDED (10) (11)				
7	ADDED (10) (11)				
8	ADDED (10) (11)				
9	ADDED (10) (11)				
10	ADDED (10) (11)				
11	ADDED (10) (11)				
12	ADDED (10) (11)				
13	ADDED (10) (11)				
14	ADDED (10) (11)				
15	ADDED (10) (11)				
16	ADDED (10) (11)				
17	ADDED (10) (11)				
18	ADDED (10) (11)				
19	ADDED (10) (11)				
20	ADDED (10) (11)				
21	ADDED (10) (11)				
22	ADDED (10) (11)				
23	ADDED (10) (11)				
24	ADDED (10) (11)				
25	ADDED (10) (11)				
26	ADDED (10) (11)				
27	ADDED (10) (11)				
28	ADDED (10) (11)				
29	ADDED (10) (11)				
30	ADDED (10) (11)				
31	ADDED (10) (11)				
32	ADDED (10) (11)				
33	ADDED (10) (11)				
34	ADDED (10) (11)				
35	ADDED (10) (11)				
36	ADDED (10) (11)				
37	ADDED (10) (11)				
38	ADDED (10) (11)				
39	ADDED (10) (11)				
40	ADDED (10) (11)				
41	ADDED (10) (11)				
42	ADDED (10) (11)				
43	ADDED (10) (11)				
44	ADDED (10) (11)				
45	ADDED (10) (11)				
46	ADDED (10) (11)				
47	ADDED (10) (11)				
48	ADDED (10) (11)				
49	ADDED (10) (11)				
50	ADDED (10) (11)				
51	ADDED (10) (11)				
52	ADDED (10) (11)				
53	ADDED (10) (11)				
54	ADDED (10) (11)				
55	ADDED (10) (11)				
56	ADDED (10) (11)				
57	ADDED (10) (11)				
58	ADDED (10) (11)				
59	ADDED (10) (11)				
60	ADDED (10) (11)				
61	ADDED (10) (11)				
62	ADDED (10) (11)				
63	ADDED (10) (11)				
64	ADDED (10) (11)				
65	ADDED (10) (11)				
66	ADDED (10) (11)				
67	ADDED (10) (11)				
68	ADDED (10) (11)				
69	ADDED (10) (11)				
70	ADDED (10) (11)				
71	ADDED (10) (11)				
72	ADDED (10) (11)				
73	ADDED (10) (11)				
74	ADDED (10) (11)				
75	ADDED (10) (11)				
76	ADDED (10) (11)				
77	ADDED (10) (11)				
78	ADDED (10) (11)				
79	ADDED (10) (11)				
80	ADDED (10) (11)				
81	ADDED (10) (11)				
82	ADDED (10) (11)				
83	ADDED (10) (11)				
84	ADDED (10) (11)				
85	ADDED (10) (11)				
86	ADDED (10) (11)				
87	ADDED (10) (11)				
88	ADDED (10) (11)				
89	ADDED (10) (11)				
90	ADDED (10) (11)				
91	ADDED (10) (11)				
92	ADDED (10) (11)				
93	ADDED (10) (11)				
94	ADDED (10) (11)				
95	ADDED (10) (11)				
96	ADDED (10) (11)				
97	ADDED (10) (11)				
98	ADDED (10) (11)				
99	ADDED (10) (11)				
100	ADDED (10) (11)				

WIRING DIAGRAM

D-63206

D-63463