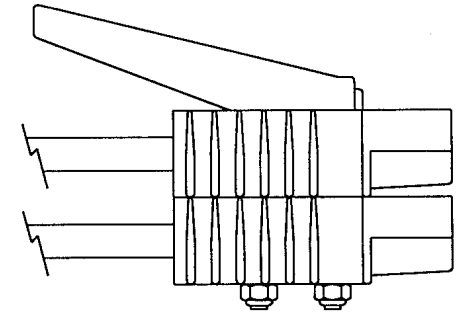
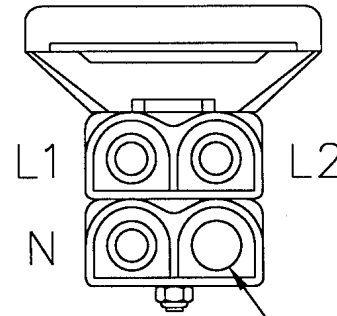
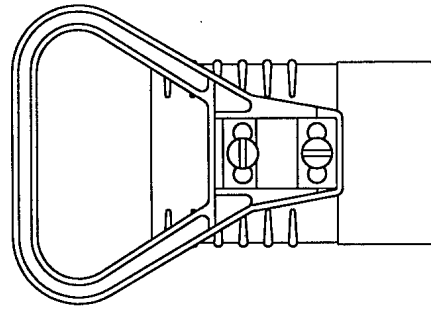
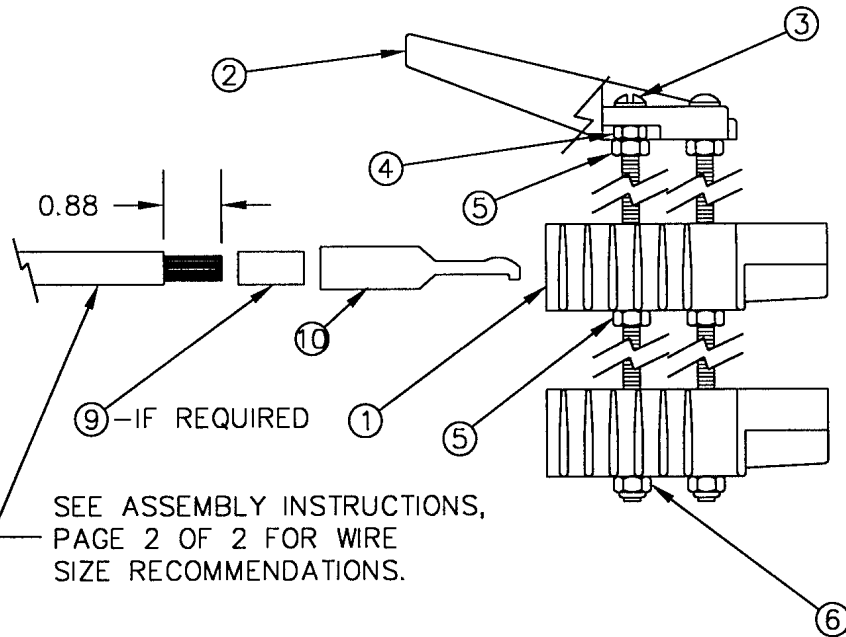


Bill of Material Report
WINCO INC
Single Level

Lvl	Typ	Seq	Part Number	Revision	Alt	Description	Qty/Parent	Required Qty
			BP10101	CONV		BAG PARTS 80/40	XX	1.00 EA
1	Mtl	5	.458-000	CONV		NUT HEX 5/16-18	4.00 EA	4.00 EA
1	Mtl	10	.638-000	CONV		NUT HEX 1/4-20	1.00 EA	1.00 EA
1	Mtl	15	.47517-000	CONV		NUT HEX 1/4-20 NYLOK	2.00 EA	2.00 EA
1	Mtl	20	.BS6	CONV		BAG 8X10 POLY. DRAW STRING	1.00 EA	1.00 EA
1	Mtl	25	.EE2327	CONV		HOUSING, GRAY, 2PL, 175A, 600V	2.00 EA	2.00 EA
1	Mtl	30	.EE2328	CONV		CONTACT, 1/0 AWG, 175A, 600V	4.00 EA	4.00 EA
1	Mtl	35	.EE2329	CONV		HANDLE, GRAY, HARDWARE & L	1.00 EA	1.00 EA
1	Mtl	40	.EE23302	CONV		BUSHING, 1/0 TO #2 AWG	4.00 EA	4.00 EA
1	Mtl	45	.BP10097-101	B		INSTR.SHEET PTO PLUG (2)	1.00 EA	1.00 EA
1	Mtl	50	.2205	CONV		RHMS 1/4-20X3 S	2.00 EA	2.00 EA



THIS CONNECTOR CAVITY MUST HAVE A CONTACT INSERTED, EVEN THOUGH THERE ISN'T A WIRE INSTALLED FOR SINGLE PHASE APPLICATIONS.



SEE ASSEMBLY INSTRUCTIONS, PAGE 2 OF 2 FOR WIRE SIZE RECOMMENDATIONS.

10	EE2328	4	CONTACT-1/0(175A)
9	EE23303	3	BUSHING ANDERSON #4
8	BP-10097-101	1	INSTRUCTION SHEETS (BP-10099 PAGE 1 & PAGE 2)
7	BS6	1	POLY BAG
6	A-47517-000	2	NYLOCK 1/4-20
5	458-000	4	HN 5/16-18
4	638-000	1	HN 1/4-20
3	2205	2	RHMS 1/4-20 x 3
2	EE-2329	1	HANDLE
1	EE-2327	2	HOUSING
ITEM	PART NO	QUAN.	DESCRIPTION

INSTRUCTIONS
PAGE 1 OF 2

ISSUE A

BP-10097-101

ASSEMBLY INSTRUCTIONS

1. READ INSTRUCTIONS COMPLETELY PRIOR TO ASSEMBLING THE CONNECTOR.
2. VERIFY THAT ALL ITEMS AND THE CORRECT QUANTITIES ARE IN THE PACKAGE BY CHECKING OFF EACH ITEM AGAINST THE BILL OF MATERIAL SHOWN ON PAGE ONE.
3. INSTALL CONTACTS INCLUDED WITH ITEM 1 ON THE ELECTRICAL CONDUCTOR (SEE THE CONDUCTOR RECOMMENDATIONS BELOW) BY SOLDERING, USING A GOOD GRADE OF RESIN CORE SOLDER OR AN APPROPRIATE COMPRESSION CRIMPER AS RECOMMENDED BY WINPOWER.

WARNING: SOLDER ONLY COPPER CONDUCTORS AND NEVER USE ACID CORE SOLDER!

4. ASSEMBLE ITEMS 1,2,3,4,5,&6 EXACTLY AS PICTURED ON PAGE ONE. THIS MAKES THE PORTABLE PLUG ASSEMBLY WITHOUT THE CONDUCTORS.
5. INSERT THE CONDUCTORS WITH THE INSTALLED CONTACTS INTO THE PROPER CAVITIES AS SHOWN ON SHEET ONE. NOTE THAT ONLY THREE OF THE CAVITIES HAVE CONDUCTORS WITH CONTACTS, WHILE THE FOURTH CAVITY HAS ONLY A CONTACT WITHOUT AN ATTACHED CONDUCTOR.

LEAD WIRE RECOMMENDATIONS

LEAD WIRE TYPE	MODEL 50/30 PTCD CDF
NEOPRENE	# 4
VINYL/HYPALON	# 4

CRIMPING TOOLS:

1. ANDERSON POWER PRODUCTS
2. ETC MODEL HHS HYDRAULIC CRIMPER
3. ITT BLACKBURN NO. 1640

NOTES:

- 1 - SIZES ARE BASED UPON A MAXIMUM LEAD LENGTH OF TEN FEET, IN FREE AIR AND A MAXIMUM AMBIENT TEMPERATURE OF 30°C(86°F). GREATER LENGTHS OR HIGHER TEMPERATURES MUST BE REVIEWED FOR VOLTAGE DROP AND REDUCED AMPACITY. THIS MUST BE DONE PER RECOMMENDATIONS OF THE NATIONAL ELECTRIC CODE, LOCAL CODES OR REGULATING BODIES THAT ARE IN AFFECT FOR THE INSTALLATION.
- 2 - #4 CONTACTS REQUIRED, WINPOWER PART NO. EE2328-2.
- #2 CONTACTS REQUIRED, WINPOWER PART NO. EE23282-1
- 1/0 CONTACTS REQUIRED, WINPOWER PART NO. EE22328.

INSTRUCTION SHEET
PAGE 2 of 2