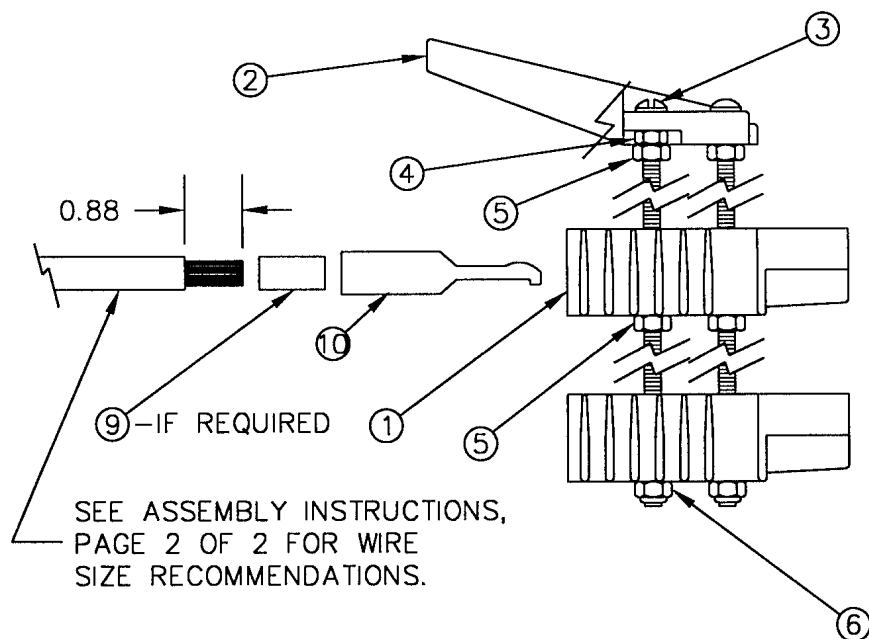


THIS CONNECTOR CAVITY MUST HAVE A CONTACT INSERTED, EVEN THOUGH THERE ISN'T A WIRE INSTALLED FOR SINGLE PHASE APPLICATIONS.



10	EE2328	4	CONTACT-1/0(175A)
9	EE23303	3	BUSHING ANDERSON #4
8	BP-10097-101	1	INSTRUCTION SHEETS (BP-10099 PAGE 1 & PAGE 2)
7	BS6	1	POLY BAG
6	A-47517-000	2	NYLOCK 1/4-20
5	458-000	4	HN 5/16-18
4	638-000	1	HN 1/4-20
3	2205	2	RHMS 1/4-20 x 3
2	EE-2329	1	HANDLE
1	EE-2327	2	HOUSING
ITEM	PART NO	QUAN.	DESCRIPTION

INSTRUCTIONS  
PAGE 1 OF 2

BP-10097-101

ISSUE A

Anderson Connectors

### ASSEMBLY INSTRUCTIONS

1. READ INSTRUCTIONS COMPLETELY PRIOR TO ASSEMBLING THE CONNECTOR.
2. VERIFY THAT ALL ITEMS AND THE CORRECT QUANTITIES ARE IN THE PACKAGE BY CHECKING OFF EACH ITEM AGAINST THE BILL OF MATERIAL SHOWN ON PAGE ONE.
3. INSTALL CONTACTS INCLUDED WITH ITEM 1 ON THE ELECTRICAL CONDUCTOR (SEE THE CONDUCTOR RECOMMENDATIONS BELOW) BY SOLDERING, USING A GOOD GRADE OF RESIN CORE SOLDER OR AN APPROPRIATE COMPRESSION CRIMPER AS RECOMMENDED BY WINPOWER.

WARNING: SOLDER ONLY COPPER CONDUCTORS AND NEVER USE ACID CORE SOLDER!

4. ASSEMBLE ITEMS 1,2,3,4,5,&6 EXACTLY AS PICTURED ON PAGE ONE. THIS MAKES THE PORTABLE PLUG ASSEMBLY WITHOUT THE CONDUCTORS.
5. INSERT THE CONDUCTORS WITH THE INSTALLED CONTACTS INTO THE PROPER CAVITIES AS SHOWN ON SHEET ONE. NOTE THAT ONLY THREE OF THE CAVITIES HAVE CONDUCTORS WITH CONTACTS, WHILE THE FOURTH CAVITY HAS ONLY A CONTACT WITHOUT AN ATTACHED CONDUCTOR.

### LEAD WIRE RECOMMENDATIONS

LEAD WIRE TYPE	MODEL 50/30 PTCD CDF
NEOPRENE	# 4
VINYL/HYPALON	# 4

### NOTES:

- 1 - SIZES ARE BASED UPON A MAXIMUM LEAD LENGTH OF TEN FEET, IN FREE AIR AND A MAXIMUM AMBIENT TEMPERATURE OF 30°C(86°F). GREATER LENGTHS OR HIGHER TEMPERATURES MUST BE REVIEWED FOR VOLTAGE DROP AND REDUCED AMPACITY. THIS MUST BE DONE PER RECOMMENDATIONS OF THE NATIONAL ELECTRIC CODE, LOCAL CODES OR REGULATING BODIES THAT ARE IN AFFECT FOR THE INSTALLATION.
- 2 - #4 CONTACTS REQUIRED, WINPOWER PART NO. EE2328-2.  
- #2 CONTACTS REQUIRED, WINPOWER PART NO. EE23282-1  
- 1/0 CONTACTS REQUIRED, WINPOWER PART NO. EE22328.

### CRIMPING TOOLS:

1. ANDERSON POWER PRODUCTS
2. ETC MODEL HHS HYDRAULIC CRIMPER
3. ITT BLACKBURN NO. 1640

INSTRUCTION SHEET  
PAGE 2 of 2