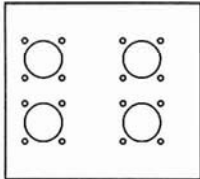


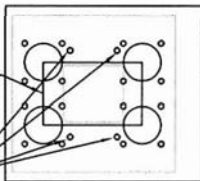
B-300134-1

REWORK STEPS

1	Tag and Remove wires and connectors from panel
2	Temporarily mount new recept. panel with two 1/4-20 fasteners
3	Mark old panel for receptacle cutout and 4 mounting holes.
4	Remove new recept panel and Cut out marked 'web' between large holes
5	Drill four 9/32" holes (.281 dia) in panel - Debur all holes W/file
6	Mount hinged cover, panel and top connector support with threadstuds
7	Assemble connectors and lower support with hardware provided
8	Install new contacts on stripped MLCB leads - Crimping preferred
9	Insert contacts into housing in positions shown - Apply decal to cover
10	Check for proper voltage output - Verify Neutral position
11	Assemble load plug kit to transfer switch cables
12	Any questions?? Call for technical support - 507-357-6707



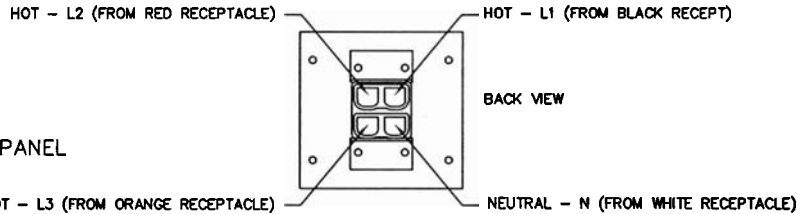
ORIGINAL PANEL (stripped)



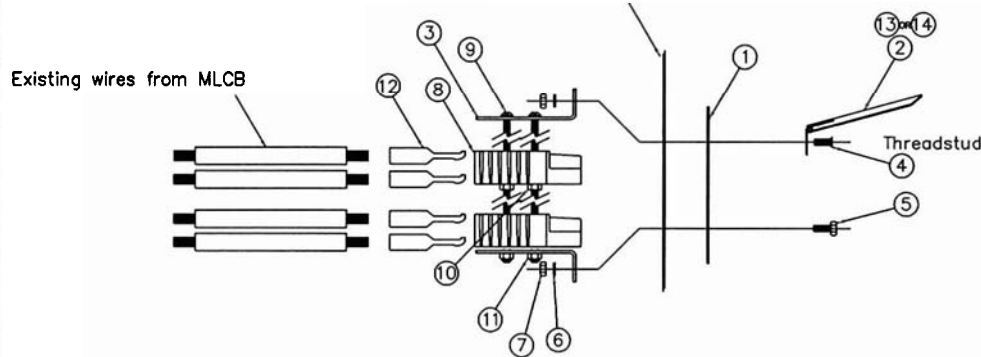
Remove this web  
Drill 4 new holes

MODIFICATION OF ORIGINAL PANEL

CONNECTOR ASSEMBLY (REAR VIEW)  
INSTALL TIPS (12) AS SHOWN



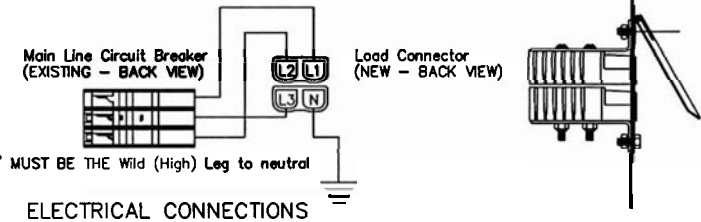
Existing panel (sandwiched between plug assembly and new cover)



ASSEMBLY NOTE: CUT OFF LUGS & STRIP 3/8" - INSTALL ITEM ⑫ (TIPS) ON WIRES.

REVISION RECORD

ISSUE	E.C.O. NO.	DESCRIPTION	DATE	BY	APPR.
A	---	ORIGINAL	-----	---	---
B	---	REVISED PLUG DETAIL, ADDED (1ea) Z-2527	11/21/00	JMH	



NOTE: 'L3' MUST BE THE Wild (High) Leg to neutral

ELECTRICAL CONNECTIONS

NOTE: PACK HARDWARE ITEMS WITH \* \* MARKING IN ITEM 16

*18*	300134-101	1	COPY OF THIS PRINT FOR CUSTOMER REFERENCE (REDUCED TO 64%)
17	100047-693	1	BOX, 6 X 6 X 8 CARDBOARD
16	B56	1	BAG, PLASTIC - SUB PACK FOR *HARDWARE ITEMS*
15	BP-10101	1	LOAD PLUG KIT - 80/40PTJD
*14*	Z-2527	1	DECAL, LOAD CONNECTIONS - 1PH (ALTERNATIVE)
*13*	Z-25271	1	DECAL, LOAD CONNECTIONS - 3PH (PRIMARY)
*12*	EE-2328-1	4	TIPS, 175 AMP x #2 AWG
*11*	47517-000	2	LOCK NUT - 1/4-20 NYLOX
*10*	458-000	2	HEX NUT - 5/16-18 (USED AS SPACERS)
*9*	2205	2	RHMS 1/4-20 x 3
*8*	EE-2327	2	HOUSING, 175 AMP
*7*	638-000	4	HN 1/4-20
*6*	479-000	4	LW, 1/4 SPLIT
*5*	466-000	2	HHCS, 1/4-20 x 3/4
*4*	A-94980-003	2	THREDSUD; 1/4-20 x 3/4
3	A-300117	2	SUPPORT, CONNECTOR
2	(A)G-7213-1	1	COVER ASSEMBLY
1	A-300133-1	1	PANEL, RECEPTACLE MTG

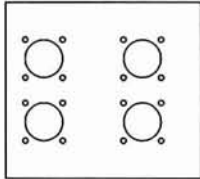
ITEM	PART NO	QUAN.	DESCRIPTION				
UNLESS OTHERWISE SPECIFIED							
FRACTIONS ±		ANGULAR	MACHINED SURFACE TEXTURE				
1. PLACE DEC. ± .1		± 1.5'	ALL DIMENSIONS GIVEN IN INCHES WORK TO DIMENSIONS - DO NOT SCALE -				
2. PLACE DEC. ± .015							
3. PLACE DEC. ± .005							
DRAWN BY		DATE	CHK'D BY	DATE	APP'D BY	DATE	SCALE
JM		05/03/00	JM	05/03/00	JM	10/09/00	1=5
MATERIAL:							
FINISH		TITLE					
ASSY Cam-Lok cnvrsn		KIT, 175A LOAD PLUG, 80/40 CONVERSION					
MODEL 80/40PTJD		PART NO.					
WINPOWER		B-300134-1					

THIS DRAWING CONTAINS PROPRIETARY INFORMATION BELONGING TO WINPOWER. UNAUTHORIZED USE IS PROHIBITED.

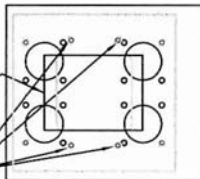
B-300134-2

REWORK STEPS

1	Tag and Remove wires and connectors from panel
2	Temporarily mount new recept. panel with two 1/4-20 fasteners
3	Mark old panel for receptacle cutout and 4 mounting holes.
4	Remove new recept panel and Cut out marked 'web' between large holes
5	Drill four 9/32" holes (.281 dia) in panel - Debur all holes W/file
6	Mount hinged cover, panel and top connector support with threadstuds
7	Assemble connectors and lower support with hardware provided
8	Install new contacts on stripped MLCB leads - Crimping preferred
9	Insert contacts into housing in positions shown - Apply decal to cover
10	Check for proper voltage output - Verify neutral position
11	Assemble load plug kit to transfer switch cables
12	Any questions?? Call for technical support - 507-357-6707



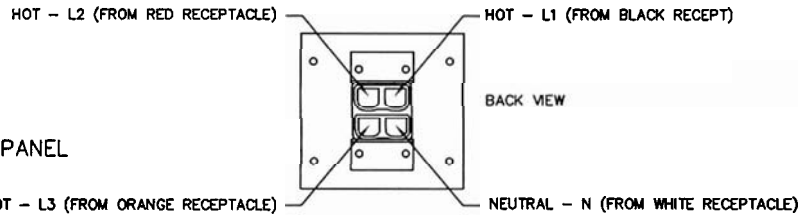
ORIGINAL PANEL (stripped)



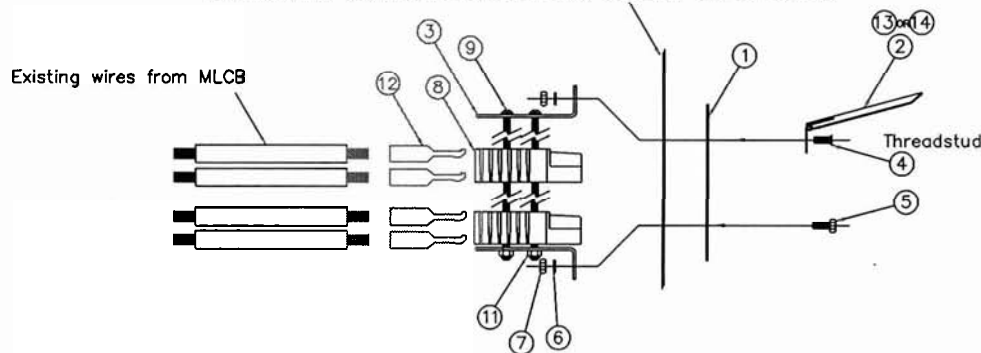
Remove this web  
Drill 4 new holes

MODIFICATION OF ORIGINAL PANEL

CONNECTOR ASSEMBLY (REAR VIEW)  
INSTALL TIPS (12) AS SHOWN

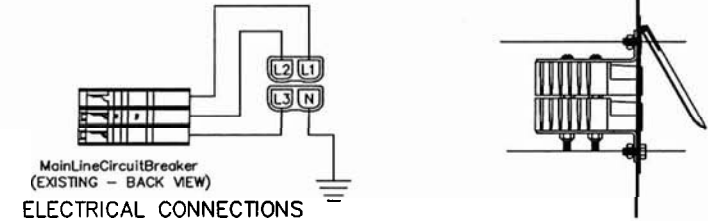


Existing panel (sandwiched between plug assembly and new cover)



ASSEMBLY NOTE: CUT OFF LUGS & STRIP 3/8" - INSTALL ITEM 12 (TIPS) ON WIRES.

A	---	ORIGINAL	-----	---
B	---	REVISED PLUG DETAIL, ADDED (1ea) Z-2527	11/21/00	JMH



NOTE: PACK HARDWARE ITEMS WITH \* \* MARKING IN ITEM 16

*18*	300134-102	1	COPY OF THIS PRINT FOR CUSTOMER REFERENCE (REDUCED TO 64%)
17	100047-693	1	BOX, 6 X 6 X 8 CARDBOARD
16	BS6	1	BAG, PLASTIC - SUB PACK FOR *HARDWARE ITEMS*
15	BP-10099	1	LOAD PLUG KIT - 150/100PTJD
*14*	Z-2527	1	DECAL, LOAD CONNECTIONS - 1PH (ALTERNATIVE)
*13*	Z-25271	1	DECAL, LOAD CONNECTIONS - 3PH (PRIMARY)
*12*	EE-2332-2	4	TIPS, 350 AMP x #3/0 AWG (000)
*11*	47517-000	2	LOCK NUT - 1/4-20 NYLOX
*9*	61993-001	2	RHMS 1/4-20 x 3 .5
*8*	EE-2331	2	HOUSING, 350 AMP
*7*	638-000	4	HN 1/4-20
*6*	479-000	4	LW, 1/4 SPLIT
*5*	466-000	2	HHCS, 1/4-20 x 3/4
*4*	A-94980-003	2	THREUDSTUD; 1/4-20 x 3/4
3	A-300117	2	SUPPORT, CONNECTOR
2	(A)G-7213-1	1	COVER ASSEMBLY
1	A-300133-2	1	PANEL, RECEPTACLE MTG

ITEM	PART NO	QUAN.	DESCRIPTION
UNLESS OTHERWISE SPECIFIED			
FRACTIONS ±		ANGULAR	MACHINED SURFACE TEXTURE
1. PLACE DEC. ± .1		± 1.5°	ALL DIMENSIONS GIVEN IN INCHES
2. PLACE DEC. ± .015			WORK TO DIMENSIONS
3. PLACE DEC. ± .005			- DO NOT SCALE -
DRAWN BY		DATE	CHK'D BY
JMH		10/03/00	JMH
DATE		DATE	APP'D BY
10/03/00		10/03/00	-
SCALE		SCALE	
1=5		1=5	
MATERIAL:			
FINISH		TITLE	
ASSY Cam-Lok cnvrnsn		KIT, 350A LOAD PLUG, 150/100 CONVERSION	
MODEL 150/100PTJD		PART NO.	
B-300134-2		B-300134-2	

