



WINPOWER CORPORATION

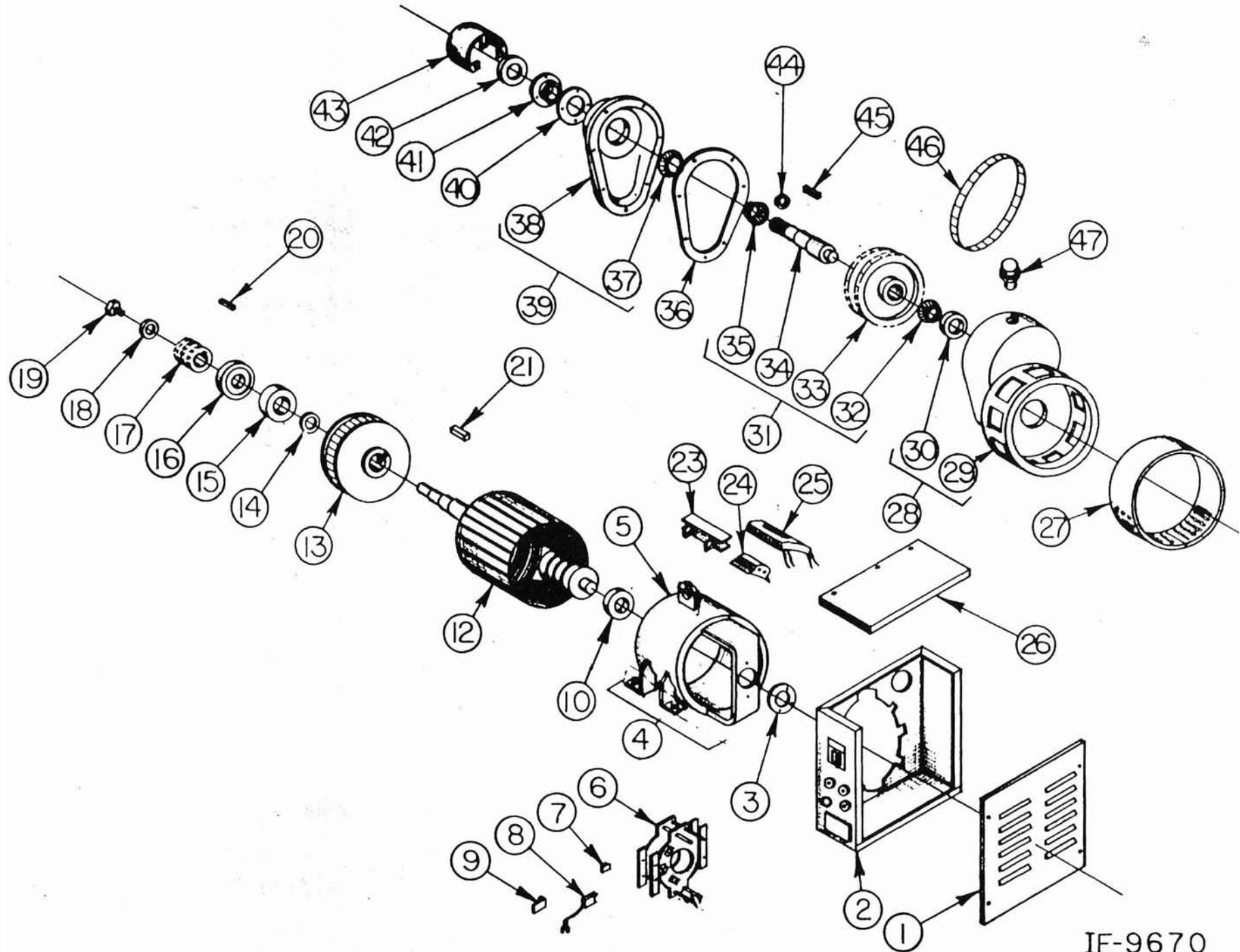
**TRACTOR DRIVEN ALTERNATOR
30,000 WATTS* A.C. 1800 R.P.M.**

PARTS LIST

REF.	PART DESCRIPTION	MODEL 30/20 PTC D		MODEL 30/20PTCM	
		PART NUMBER	REQ'D	PART NUMBER	REQ'D
1	Panel Front	G-7231	1		
2	Panel Back Assembly	G-5434-38	1		
3	Bearing Retainer	W-43	1		
4	Field Frame Assembly	G-4776-17	1		
5	Field Frame	G-7286	1		
6	Brush Gear Assembly	G-5430-1	1		
7	Tinnerman	4996	6		
8	Brush	Y-51	9		
9	Brush Spring	G-3422	9		
10	Bearing-Slip Ring End	D-8	1		
11	N.A.				
12	Armature	G-7295-1	1		
13	Fan Assembly	G-5878-2	1		
14	Washer	S-7019	1		
15	Bearing - DE	D-3	1		
16	Grease Seal	TE-888	1		
17	Sprocket-Lower-3Row	S-6350-1	1	S-6779-2	1
18	Washer	1211	1		
19	Screw	11508	1		
20	Key - Sprocket	S-7467-12	1		
21	Key - Fan	S-2056-90	1		
22	N.A.				
23	Coil Shield	J-528-2	8		
24	Field Pole	G-7287	4		
25a	Field Coil	H-1232-1	1		
25b	Field Coil	H-1232-2	1		
25c	Field Coil	H-1232-3	1		
25d	Field Coil	H-1232-4	1		
26	Panel Top Cover	S-7623-2	1		
27	Wrapper	S-7037	1		
28	Gear Case Housing Assy.	G-5922	1		
29	Housing	I-885	1		
30	Bearing Cup	D-27	1		
31	Drive Shaft Assembly	G-5925	1	G-5964	1
32	Bearing Cone	D-28	1	S-6778-1	1
33	Sprocket 3 Row	S-7301	1		
34	Shaft 6 Spline 1-3/8	N-593	1	N-593-3	1
35	Bearing Cone	D-70	1		
36	Gasket	X-197	1		
37	Bearing Cup	D-71	1		
38	Gear Case Cover	I-884	1		
39	Gear Case Cover Assy.	G-5924	1		
40	Shim .001 Thick Amber	X-198-1			
a	Shim .002 Thick Red	X-198-2			
b	Shim .005 Thick Blue	X-198-3			
c	Shim .010 Thick Brown	X-198-4			
d	Shim .020 Thick Yellow	X-198-5			
41	Retainer Plate	I-883	1		
42	Seal-Upper	X-201	1		
43	PTO Guard	S-7606	1		
44	Washer - Hardened	S-7046	1		
45	Key	S-2056-86	1		
46	Drive Chain-3 Row	G-7283	1	G-4333	1
47	Vent Cap	10801			

Wiring Diagram IC-6949
Parts Drawing IE-9670

All parts and quantity remains the same, except as noted.



PANEL G-5434-38 TYPE 1			
REF.	PART DESCRIPTION	PART NUMBER	REQ'D
1	Choke	EE-2046	1
2	Receptacle 250 Volt	EE-399	1
3	Receptacle Duplex	EE-323	1
4	Circuit Breaker 50 Amp	EE 28098S	1
5	Circuit Breaker 15 Amp	EE 28131	1
6	Mounting Plate	S50271	1
7	Not Applicable		
8	Rectifier Assembly Shunt	EE-2214	1
9	Voltmeter	VM-716	1
10	Panel Weld Assembly	G-5838-30	1
11	Insulator	W-203	2
12	Mounting Plate	S-5027-1	1
13	Filler Plate	EE-779	1
14	Circuit Breaker	EE-1818	1
15	Ground Lug	EE-1671	1
16	Tinherman	4957	7
17	Transformer	EE-2047	1
18	Load Plug Bracket	S-9292	1
19	2 Pole Load Plug Housing	EE-2327	1
20	Load Plug Terminal	EE-2328	4
21	Contact Bushing #6 Wire	EE-2330-6	3

Parts Drawing IE-10951
10-5-78

PL-2038
(Sheet 2 of 2)

IE-10951

