

Schematic B91322
 Control Box
 Assy. C91258-3
 Complete Unit
 Part # D91233-8
*D91233-2

 REPAIR
 PARTS LIST
 #599

Size 35,000 Watts
 Unit
 Model # CSA30PTOC-3/A
(540 RPM)
*CSA30FPTOC-3/A
(1000 RPM)

<u>DESCRIPTION</u>	<u>PART #</u>	<u>QTY.</u>	<u>DESCRIPTION</u>	<u>PART #</u>	<u>QTY.</u>
GENERATOR			CONTROL BOX		
Rotor Assy. Complete	91237	1	Bare Receptacle Panel	91282	1
Rotor Bearing			Circuit Breaker Main Line		
Fan End	91112	1	125 Amp, 2 Pole	57212-1	1
Rotor Bearing			Octopus Receptacle	91333	1
Brush End	91111	1	Octopus Plug	91334	1
Fan (Impeller)	91101	1	Allen Wrench	55002-2	1
Stator & Shell Assy.	91148	1	Circuit Breaker		
			50 Amp, 2 Pole	57030	1
Brush	23607	4	Receptacle (50A)		
Brush Holder	23500	4	(240V) (1 Ø)	57325	1
Rectifier	91452	1	Plug (50A)		
			(240V) (1 Ø)	58230	1
GEAR BOX					
Seal (Input Shaft)	91247	1	Circuit Breaker		
Gear (Drive Input)			15 Amp, 1 Pole	91286	1
(540 RPM)	91118*	1	Receptacle (15A)		
Pinion			(120V) Duplex	24749	1
(540 RPM)	91225**	1	Transformer		
Gasket	91104	1	(Forcing)	91187	1
Seal (Gen. Shaft)	91116	1	Voltmeter	91370	1
Bearing (Gear Box)	91250	2			
Shaft (Drive Input)	91344	1			
Vent Plug	40716	1			

NOTE - for CSA30FPTOC 3/A, 1000 RPM

*Gear (Drive Input) 91248 1
 **Pinion 91224 1



Division of Dyna Technology, Inc.
 225 South Cordova St. / LE CENTER, MINNESOTA 56057
 Phone: (612) 357-6821

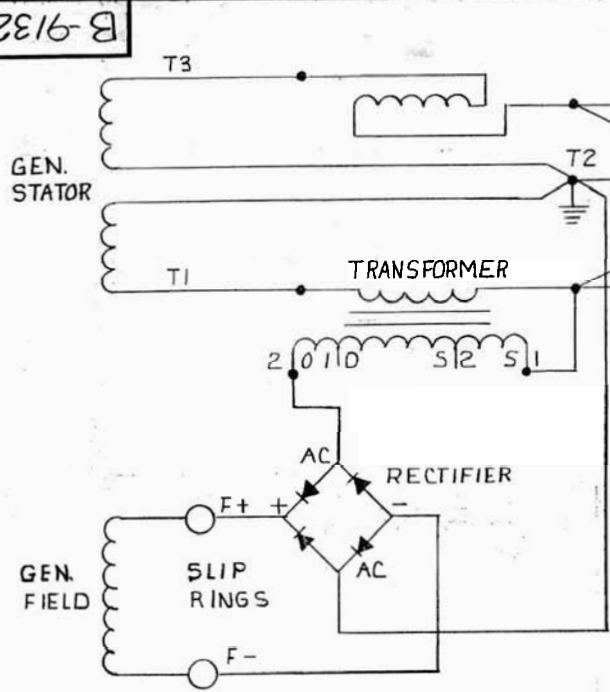


FIG.#1
30PTOC-31B

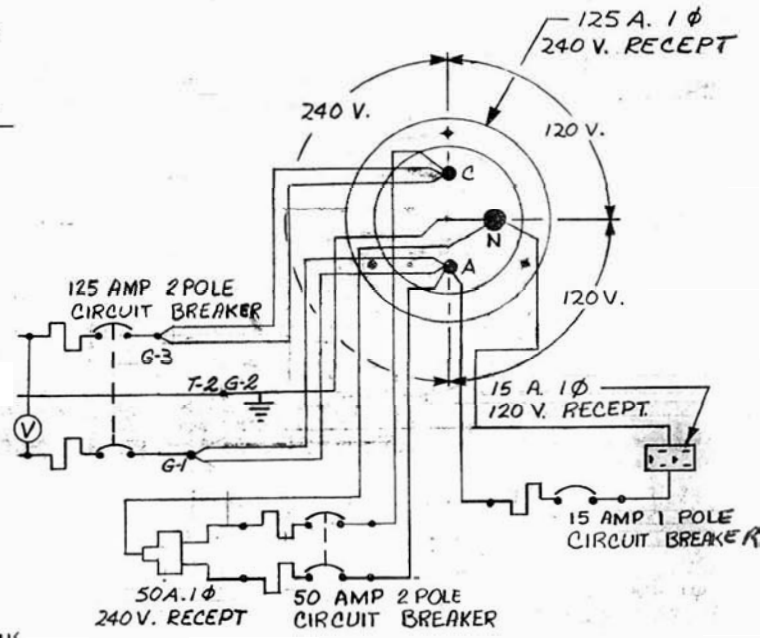
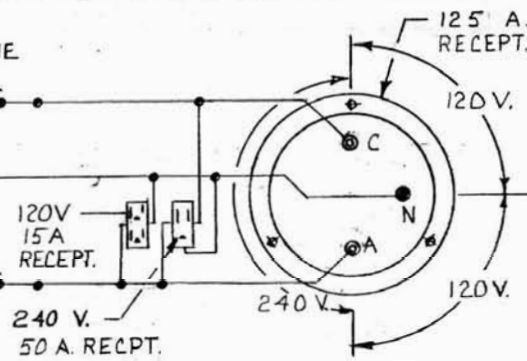


FIG.#2
CSA30PTOC-3/A

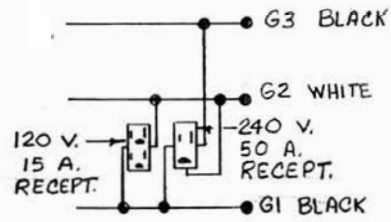


FIG.#3
30PTOC-3/A

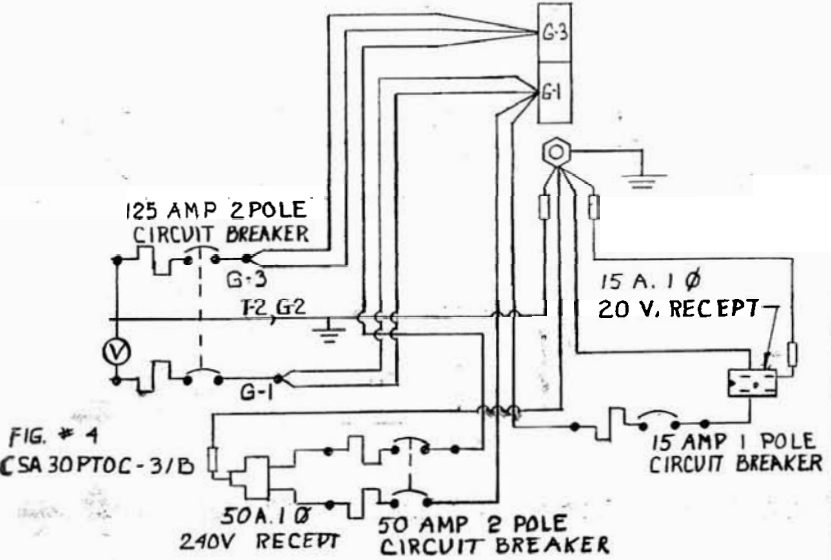


FIG.#4
CSA 30PTOC-3/B

240/120 VOLT SINGLE PHASE

6	RECT AC TERM WAS CONN TO TOP 10 (1402B)	4.1.93	D.W.	GR	ALL DIMENSIONS GIVEN IN INCHES—WORK TO DIMENSIONS—DO NOT SCALE—SAMPLES BE APPROVED BY DYNA TECHNOLOGY ENGINEERING DEPT BEFORE PROCEEDING WITH PRODU— TOLERANCES (UNLESS OTHERWISE SPECIFIED): FRACTIONS ± 1 DECIMALS ± .005 PUNCHED HOLES + .004 — .000 DRAWN BY: MWU DATE: 9-5-75 CHK'D BY: RM DATE: 10-9-75 APP'D BY: DATE: 10-14-75 MATERIAL: FINISH: ASSY: D-91233 MODEL: SEE ABOVE PTO GENERATOR SCHEMATIC Division of DYNA TECHNOLOGY, INC. Sluvis City, Iowa 51102 B-91322
5	ADDED FIG A	No #N	8/29/84	GR	
4	REVISED FIG. 2		1-4-77	C.S.	
3	DELETED INDIVIDUAL GEN. RECEPTS	6-10-76	MU		
4	ADDED 125 A. 1 Ø 240 VOLT RECEPT, TO FIG. 1 CHANGING MODEL TO 3/B, FIG. 3 ADDED				
2	CHANGED TRANSFORMER LEADS	4-30-76	RM		
	DELETED 25 & 18 ADDED 20, 31 & 32				
	CHANGED TRANSFORMER CONNECTIONS				
1	ORIGINAL				