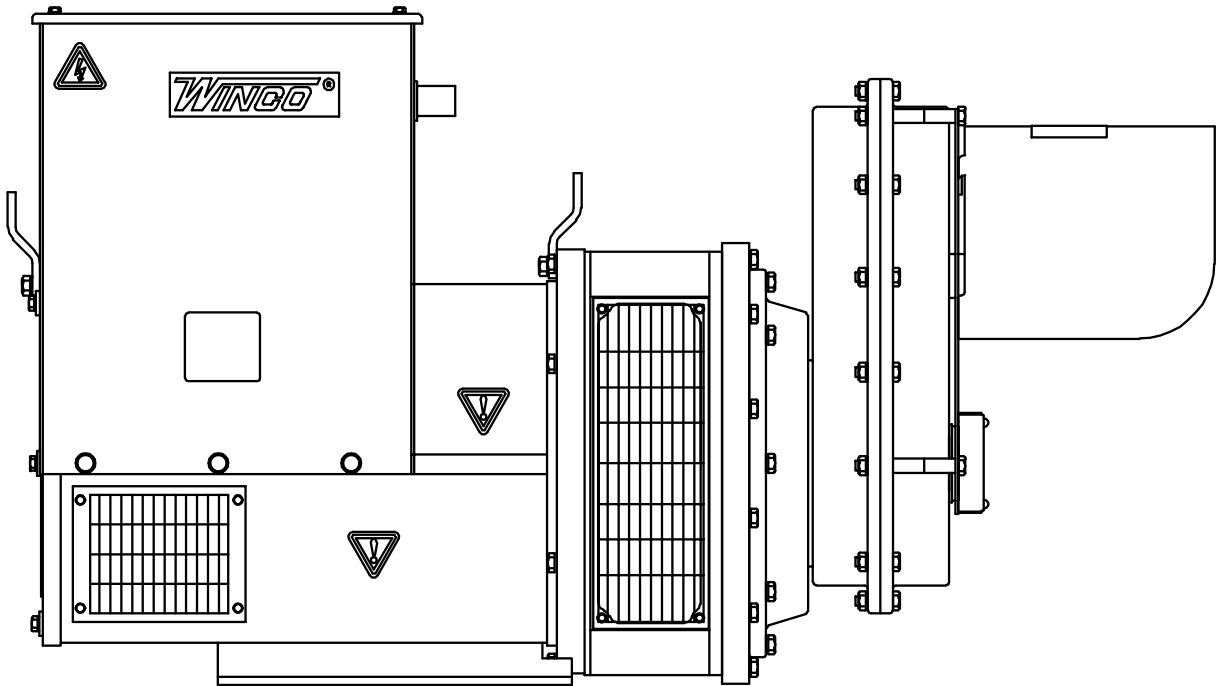
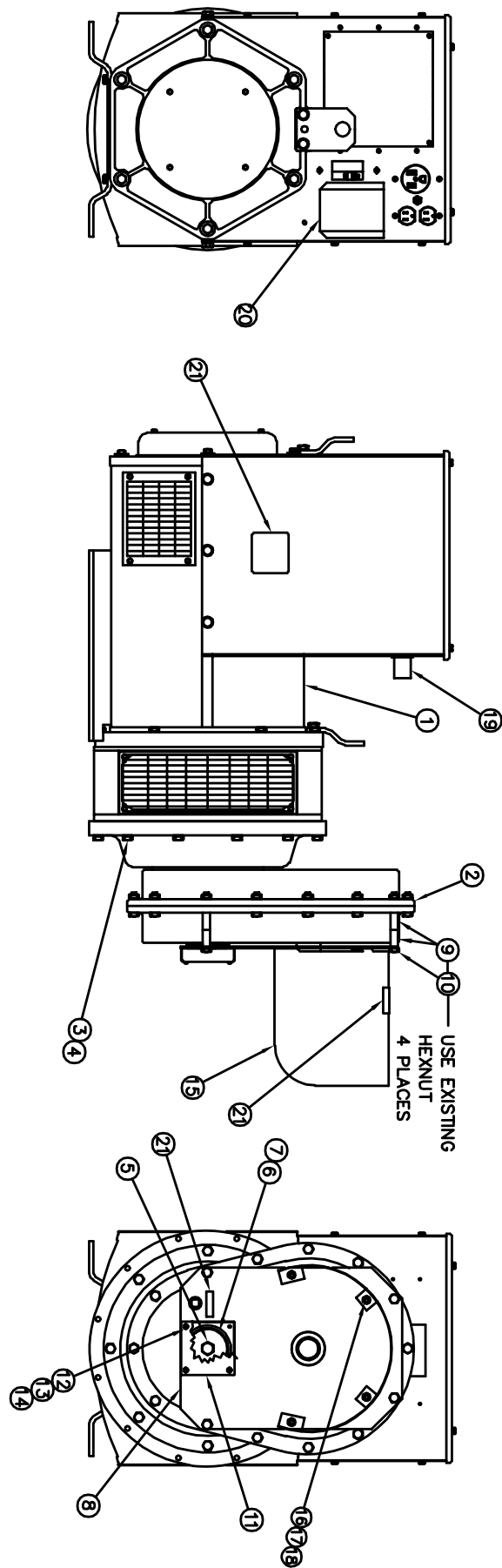


ILLUSTRATED PARTS LIST

W85PTOS/B



GENERATOR ASSEMBLY



GENERATOR ASSEMBLY

27	A-64914-000	16	M6 X 1.0 RETAINER NUT
26	1744-000	4	1/2-13 HEXNUT (SHIPPING)
25	21867-000	4	1/2 FLATWASHER (SHIPPING)
24	A-61603-005	4	1/2-13 X 2-1/2 CARRIAGE BOLT (SHIPPING)
23	A-BP-10099	1	PLUG KIT (SHIPPED LOOSE)
22	60708-124	1	OPERATORS MANUAL
21	B-64894-001	1	DECAL AND NAMEPLATE INSTALLATION
20	B-300113-8	1	RECEPTACLE PANEL ASSEMBLY
19	B-300101-14	1	MAIN LINE BREAKER PANEL ASSEMBLY
18	A-16249-000	4	5/16-18 HEX FLANGENUT
17	526-000	4	5/16 FLAT WASHER
16	465-000	4	5/16-18 X 7/8 HEX HEAD BOLT
15	S-7606	1	PTO SHAFT GUARD
14	484-000	4	# 10 SPLIT LOCKWASHER
13	456-000	4	#10-24 HEX NUT
12	A-52464-002	4	#10-32 X 1-1/2 ROUND HEAD SCREW
11	A-300105	1	LOWER SHAFT GUARD
10	A-91658-015	4	3/8-16 X 4 HEX HEAD BOLT
9	A-62825-004	8	SPACER
8	A-300104	1	PTO SHAFT GUARD SUPPORT PLATE
7	A-300096	1	SHAFT WASHER
6	A-300106-1	1	BELLEVILLE WASHER, 5/8"
5	A-350096-35	1	M16-2.00 X 35MM HEX HEAD BOLT
4	A-97436-008	12	M8 SPLIT LOCKWASHER
3	A-96002-040	12	M8 X 1.25 x 40 MM HEX HEAD BOLT
2	B-300100-1	1	GEARCASE
1	B-351810-51	1	GENERATOR
ITEM	PART NO	QUAN.	DESCRIPTION



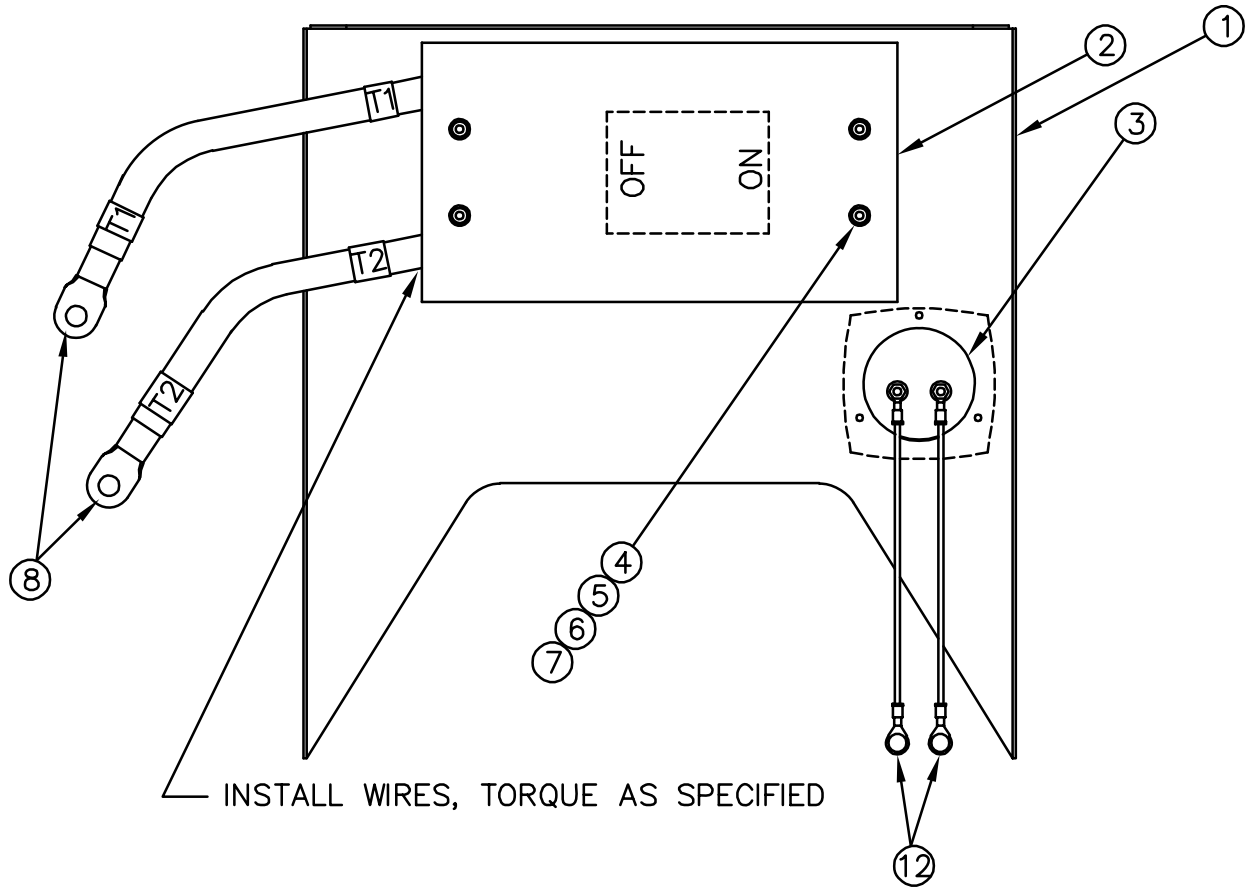
225 S. CORDOVA AVE.
LECENTER, MN 56057
507-357-6821
SERVICE DEPT.
507-357-6831

STAMFORD NEWAGE GENERATOR
INFORMATION:

MODEL: UCI224G2J TWO BEARING

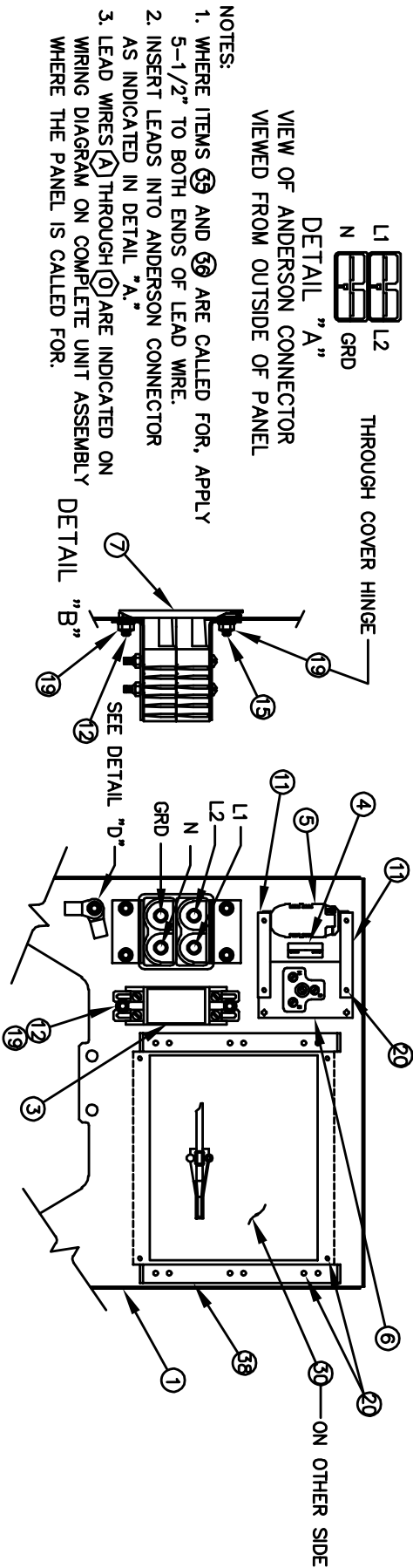
www.cumminsgeneratortechnologies.com

MAIN LINE CIRCUIT BREAKER PANEL ASSEMBLY



14	B-24862-011	2	LEAD I.D. TAPE (T2)
13	B-24862-010	2	LEAD I.D. TAPE (T1)
12	A-91457-002	2	TERMINAL LUG
11	A-12624-000	1.7FT	LEAD WIRE (16 GA.)
10	A-4158-000	2	TERMINAL LUG
9	A-300114	2.92FT	LEAD WIRE (#3/0 AWG)
8	A-99823-001	2	TERMINAL LUG
7	598	4	#10 FLAT WASHER
6	484	4	#10 SPLIT TYPE LOCKWASHER
5	6372-000	4	#10-32 HEX NUT
4	24864-000	4	10-32 x 4-1/2 ROUND HEAD SCREW
3	A-300102	1	FREQUENCY METER
2	A-81094-9	1	CB, 350 AMP, 2 POLE
1	B-350028-1	1	PANEL, MLB
ITEM	PART NO	QUAN.	DESCRIPTION

FRONT PANEL ASSEMBLY

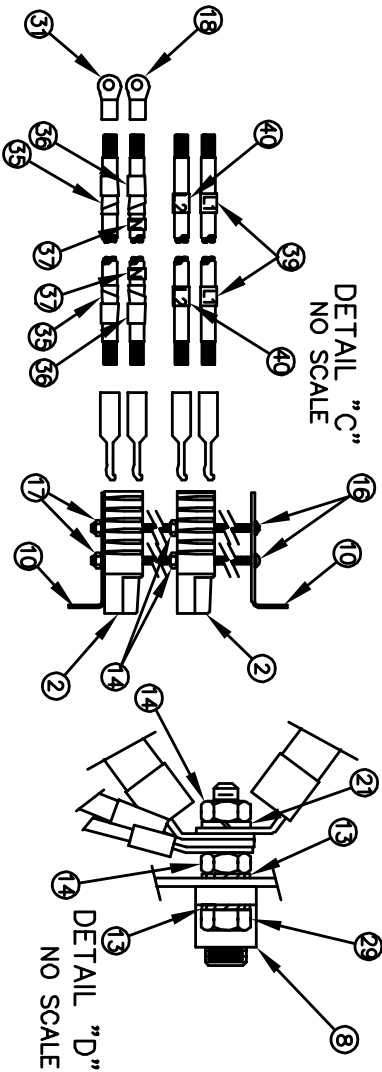


VIEW OF ANDERSON CONNECTOR
VIEWED FROM OUTSIDE OF PANEL

DETAIL "A"



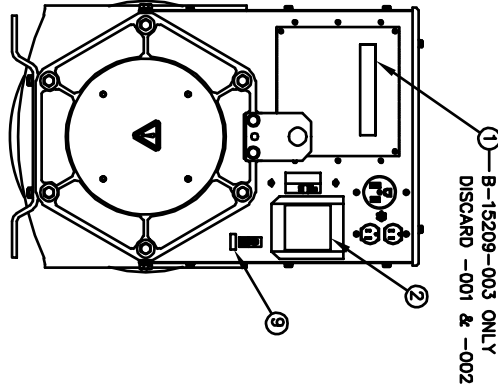
- NOTES:
1. WHERE ITEMS 59 AND 58 ARE CALLED FOR, APPLY 5-1/2" TO BOTH ENDS OF LEAD WIRE.
 2. INSERT LEADS INTO ANDERSON CONNECTOR AS INDICATED IN DETAIL "A."
 3. LEAD WIRES (A) THROUGH (O) ARE INDICATED ON WIRING DIAGRAM ON COMPLETE UNIT ASSEMBLY WHERE THE PANEL IS CALLED FOR.



FRONT PANEL ASSEMBLY

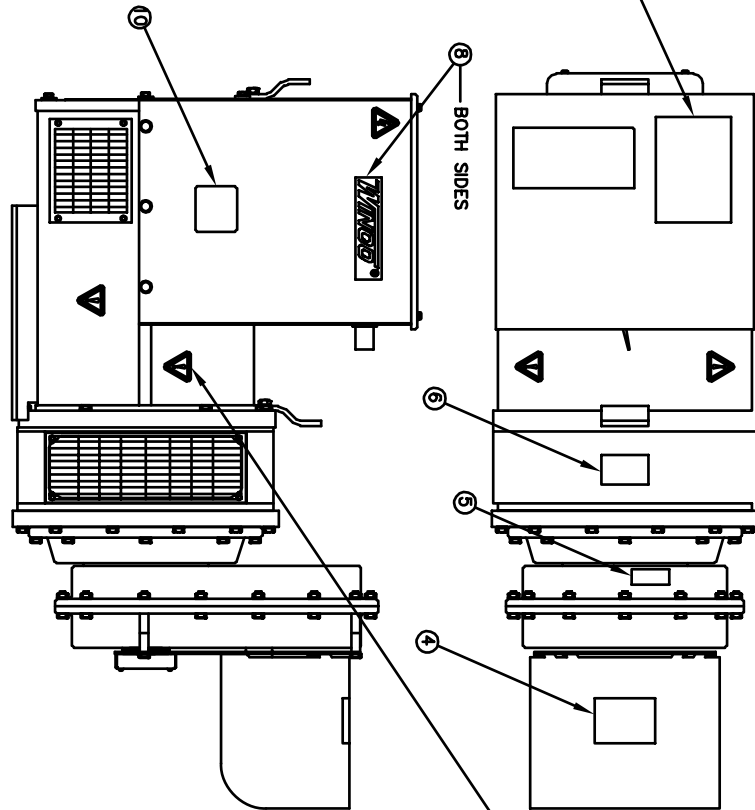
41	A-7547-000	1	TERMINAL LUG				
39	B-24862-013	2	LEAD I.D.TAPE - L1	40	B-24862-014	2	LEAD ID TAPE - L2
37	B-24862-078	2	LEAD I.D.TAPE - N	38	A-64893-000	2	REGULATOR BRACKET
35	A-59320-000	.92FT	GREEN TAPE	36	A-80733-000	2.75FT	WHITE TAPE
33	A-64638-000	1.25FT	#10 GA GREEN LEADWIRE	34	A-59341-000	1.33FT	#14 GREEN LEADWIRE
31	A-91321-001	2	TERMINAL LUG	32	A-4155-000	1	TERMINAL LUG
29	439-000	1	HHCS, 1/4-20 x 1	30	A-64892-000	1	COVER PLATE
27	A-91780-000	4.25FT	#8 GA BLACK LEADWIRE	28	A-80726-000	2.7 FT	#2 GA BLACK LEADWIRE
25	A-91321-000	2	TERMINAL LUG	26	A-91815-000	3.30FT	#14 GA BLACK LEADWIRE
23	B-21850-002	3	TERMINAL LUG	24	B-48602-001	2	TERMINAL LUG
21	479-000	1	1/4 SPLIT LOCKWASHER	22	A-4160-000	1	TERMINAL LUG
19	A-16248-000	6	1/4-20 FLANGE HEXNUT	20	A-21698-001	14	#10 X 3/8 TYPE Z SHEET METAL SCREW
17	47517-000	2	LOCKNUT	18	A-99823-001	2	TERMINAL LUG
15	A-94980-001	2	1/4-20 X 5/8 THREADSTUD	16	A-61993-001	2	1/4-20 X 3-1/2 ROUND HEAD SCREW
13	4516-000	2	1/4" EXTERNAL LOCKWASHER	14	638-000	4	1/4-20 HEXNUT
11	B-64045-002	2	STRIP, MOUNTING	12	463-000	4	1/4-20 x 1 HEX HEAD BOLT
9	A-300114	5.4 FT	3/0 AWG BLACK LEADWIRE	10	A-300117	2	SUPPORT, CONNECTOR
7	(A)G-7213-1	1	COVER ASSEMBLY	8	A-63708-000	1	TERMINAL LUG
5	A-50766-000	1	20 A, 125 VOLT DUPLEX RECEPTACLE	6	A-57325-000	1	50 AMP, 250 VOLT RECEPTACLE
3	A-57030-000	1	50 AMP, 2 POLE CIRCUIT BREAKER	4	A-91286-001	1	20 AMP 1 POLE CIRCUIT BREAKER
1	B-300112-1	1	PANEL, FRONT	2	EE-2334-1	2	HOUSING & CONTACTS
ITEM	PART NO	QUAN.	DESCRIPTION	ITEM	PART NO	QUAN.	DESCRIPTION

NAMEPLATE AND DECAL INSTALLATION

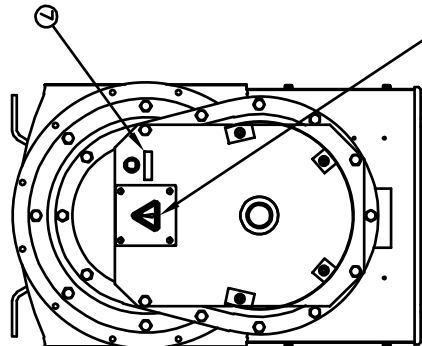


TO BE READ
FROM THIS END

③

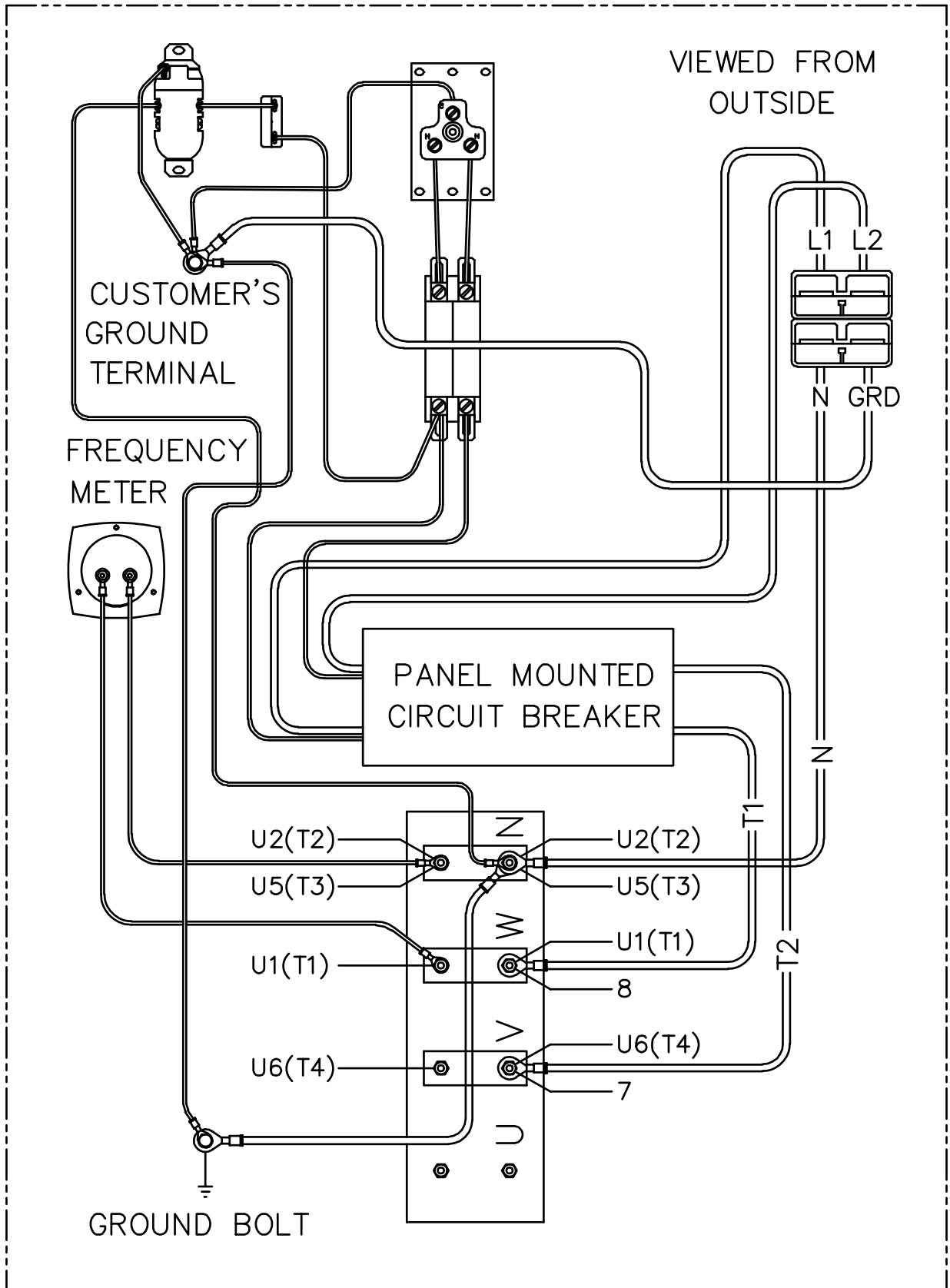


APPLY DECAL SET THAT IS INCLUDED
WITH GENERATOR AS INSTRUCTED ON
BACK SIDE OF DECALS



10	A-63966-007	1	NAMEPLATE KIT
9	A-15750-001	1	GROUND DECAL
8	A-53113-000	2	WINCO DECAL
7	A-16303-000	1	DECAL, OIL LEVEL
6	A-91369-001	1	DECAL, 1000 RPM
5	Z-9941	1	DECAL, OIL FILL
4	Z-2568	1	DECAL-DANGER PTO
3	Z-2553	1	DECAL, OPERATING INSTRUCTIONS
2	Z-2527-2	1	DECAL, ANDERSON SINGLE PHASE
1	B-15209-000	1	DECAL SET
ITEM	PART NO	QUAN	DESCRIPTION

WIRING DIAGRAM



WIRING DIAGRAM (SINGLE PHASE "4 WIRE"; 120/240)