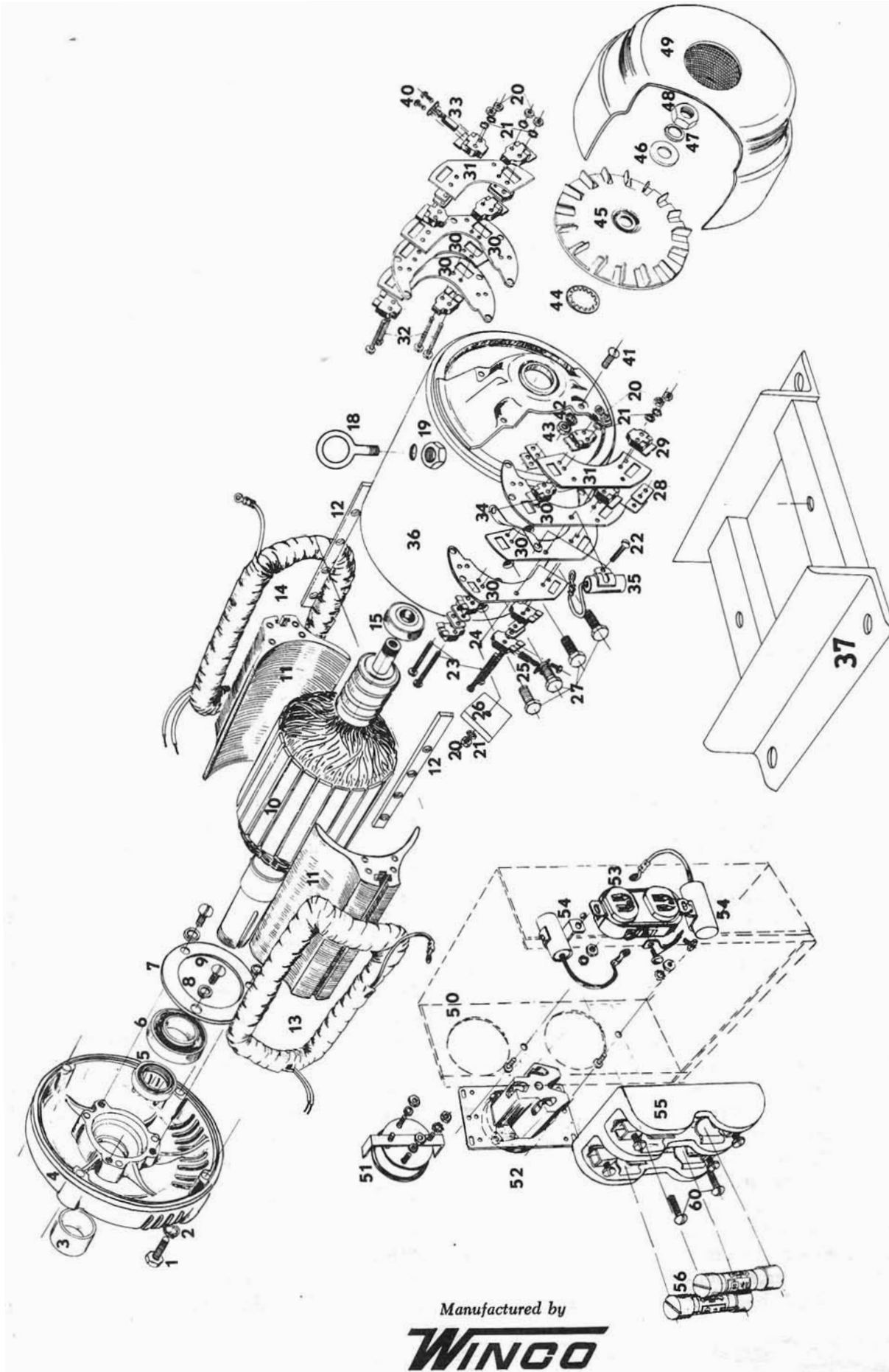


WINCO GENERATOR PLANT MODEL P15PTOF-3/D

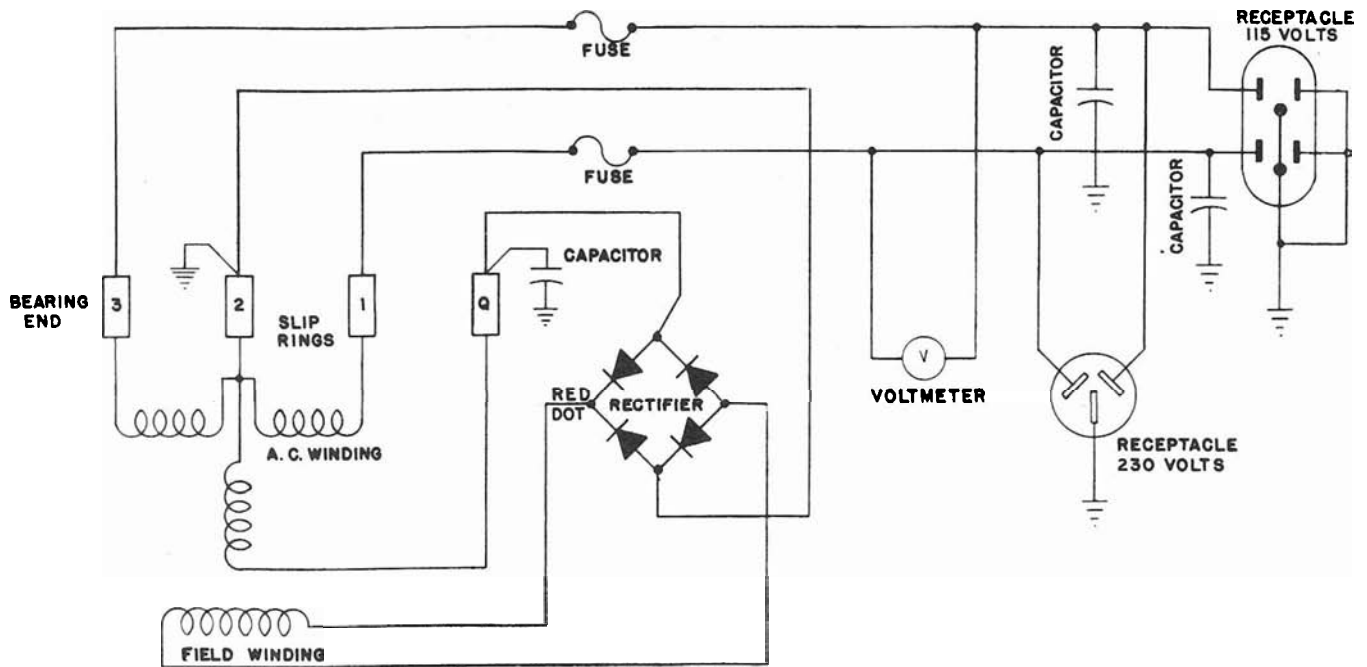


Manufactured by

WINCO

Division of Dyna Technology, Inc.

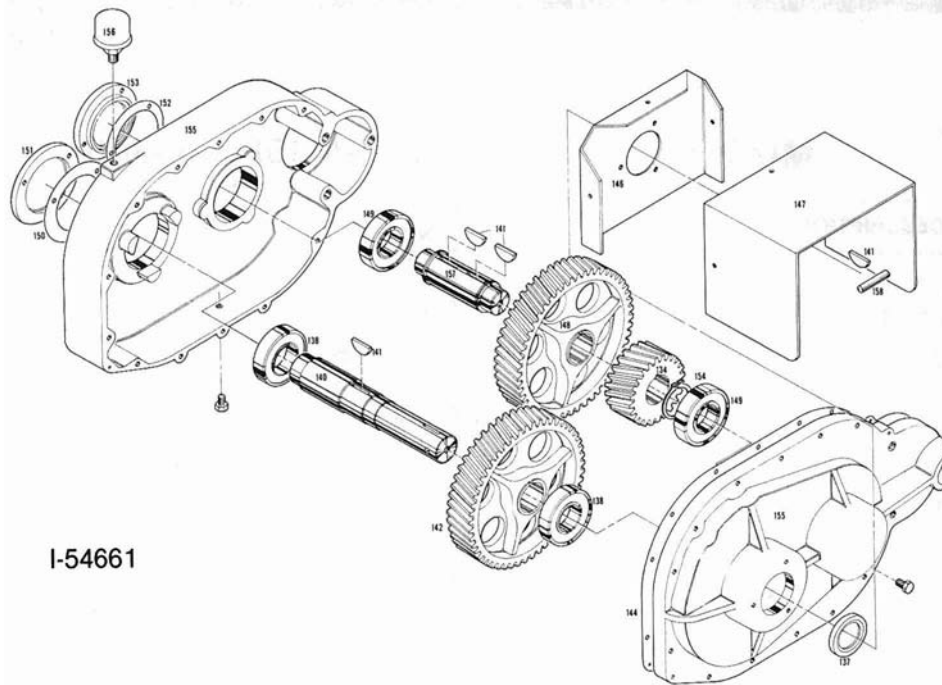
East Seventh at Division / P. O. Box 3263 / Phone (712) 252-1821 / SIOUX CITY, IOWA 51102



PARTS LIST

Ref. No.	Part No.	Description	Qty.	Ref. No.	Part No.	Description	Qty.
1	51101	Field Sh. cap screw	4	31	52559	Brush holder spacer	2
2	480	Field Shell lockwasher	4	32	44342	Machine screw	4
3	20137	Sleeve	1	33	24981	A.C. Brush	12
4	54804	End Bracket	1	34	41387-6	Ground strap	1
5	46912	Oil Seal	1	35	41221	Condenser	1
6	46913	Bearing	1	36	54734	Field shell & Bracket	1
7	44318	Bearing Retain. Plate	1	37	54754	Base assembly	1
8	479	Bear. Ret. L-washer	3	38	48178	Hex head screw	2
9	45633	Bear. Ret. Screw	3	39	636	Lockwasher (split type)	2
10	52497-1	Armature	1	40	40746	Brush holder screw	28
11	43473	Pole shoe assembly	2	41	4637	Machine screw	4
12	43474	Pole shoe retainer	2	42	484	Lockwasher	4
13	54819	Field coil assembly	1	43	456	Hex Nut	4
14	54819-1	Field Coil assembly	1	44	40552	Lockwasher (fan)	1
15	50215	Bearing	1	45	23404	Fan assembly	1
18	54790	Eye bolt	1	46	21867	Flat washer (fan)	1
19	1744	Nut	3	47	20039	L-washer (fan) split type	1
20	5113	Hex nut	9	48	9549	Hex nut (fan)	1
21	6376	Lockwasher (split type)	9	49	23634	End Cover	1
22	23599	Machine screw	1	50	56194	Control box (only)	1
23	21977	Machine screw	4	51	52490	Voltmeter	1
24	23500	Brush holders	2	52	48343	Receptacle	1
25	53949	Q ring brush	2	53	24749	Duplex receptacle	1
26	53976	Rectifier	1	54	56206	Condensers	2
27	53806	Cap screw	8	55	48406	Fuse base	1
28	23532	Fiber spacers	14	56	48469	Fuse	2
29	23500-2	A.C. brush holders	12	57	43743	Ground Lug	1
30	53975	Brush holder mtg. plate	6	60	6402	Machine screw	2

Any parts required for gas engine portion of the unit should be obtained from the local engine manufacturer's service station.



I-54661

Gear Box Assembly

REF. NO.	DESCRIPTION	QTY.	PART NO.	REF. NO.	DESCRIPTION	QTY.	PART NO.
130	Gear Box Assembly	1	54661	149	Bearing	2	54665
134	Pinion Gear	1	46547	150	Gasket	1	46299
137	Seal	1	20029	151	Retainer	1	46295
138	Bearing	2	54666	152	Gasket	1	46298
140	Shaft (Input Drive)	1	46296	153	Retainer	1	46286
141	Woodruff Key	4	1774	154	Snap Ring	1	20133
142	Gear (Input Drive) <i>59 Teeth</i>	1	46548	155	Gear Case & Cover (Matched)	1	54662
144	Gasket (Cover)	1	20016	156	Breather	1	40716
146	Backing Plate	1	56207	157	Shaft (Driven)	1	20128
147	Safety Shield	1	53332	158	Roll Pin	1	4133
148	Gear (Driven) <i>64 Teeth</i>	1	46546				

GENERATOR SPECIFICATIONS:

KW—15; Volts—120/240; Amps.—62.5; PH—1; Hz—60; RPM—Input 540, Gen. 3600

Resistance:

Field Coils—22.8 ± .6 ohms

Armature—Less than 1 ohm ring to ring

Separately Excited:

12VDC to Field—50 to 70 volts output

WINCO®

Division of
DYNA TECHNOLOGY, INC.
 225 South Cordova
 Le Center, MN 56057
 Phone (612) 357-6821
 Telex 290753