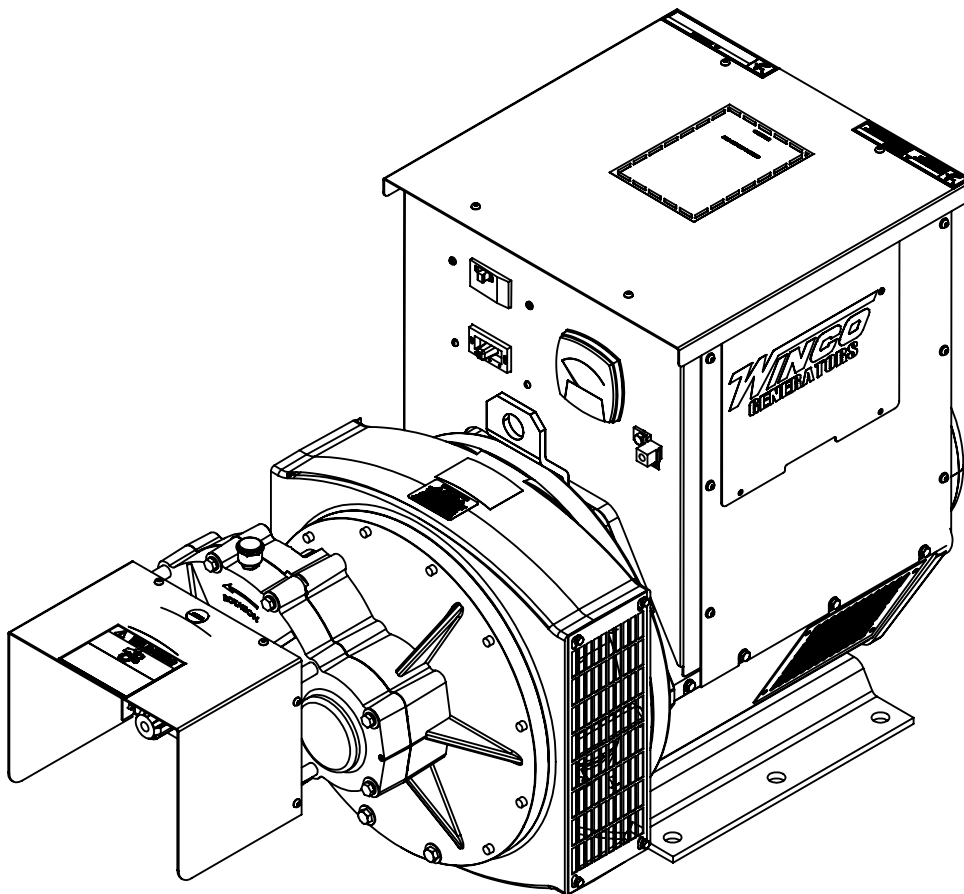
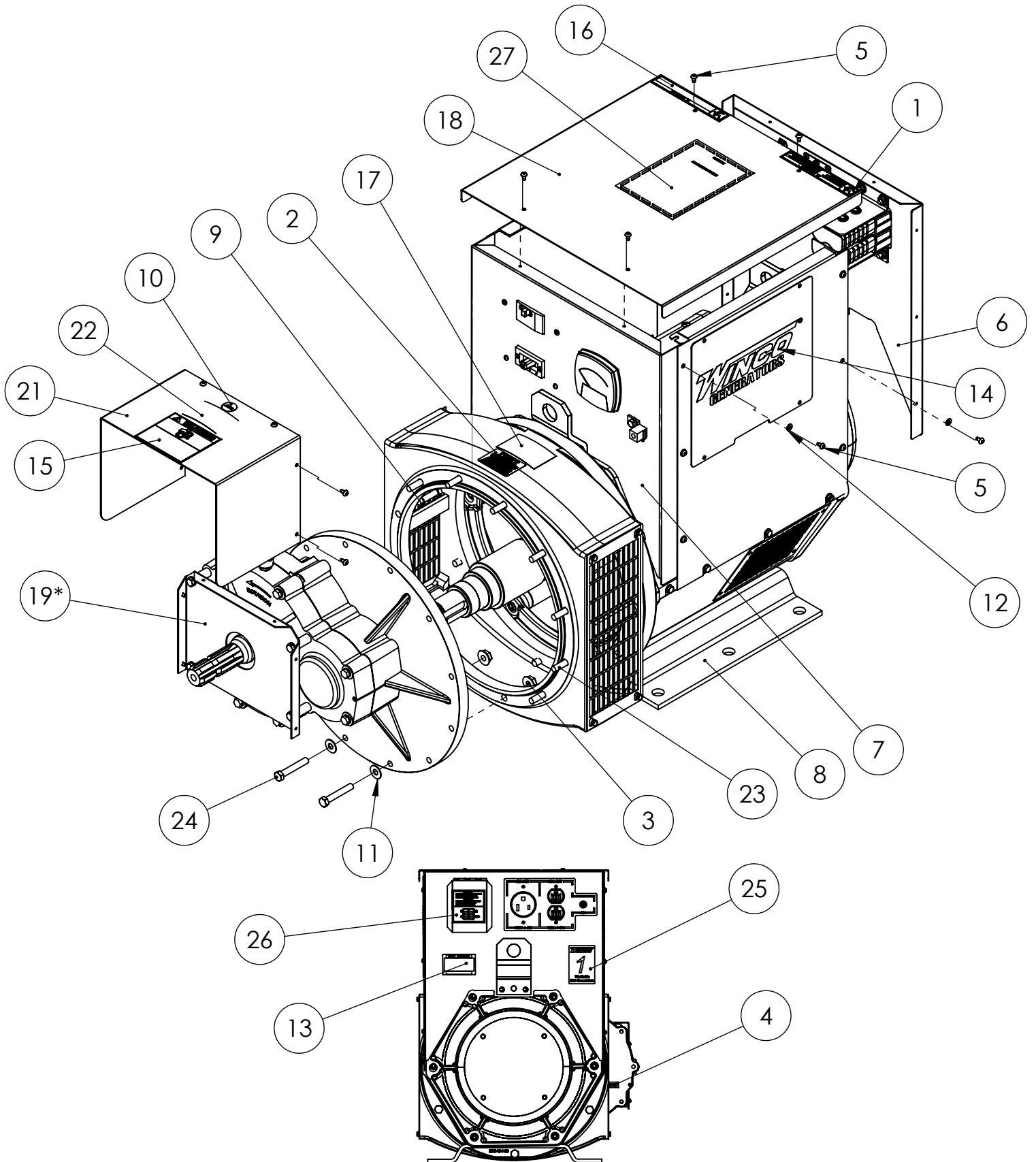


50PTOC4-03/1 50PTOT4-03/1



WINCO Service
Phone: 507-357-6831
Email: service@wincogen.com
www.wincogen.com

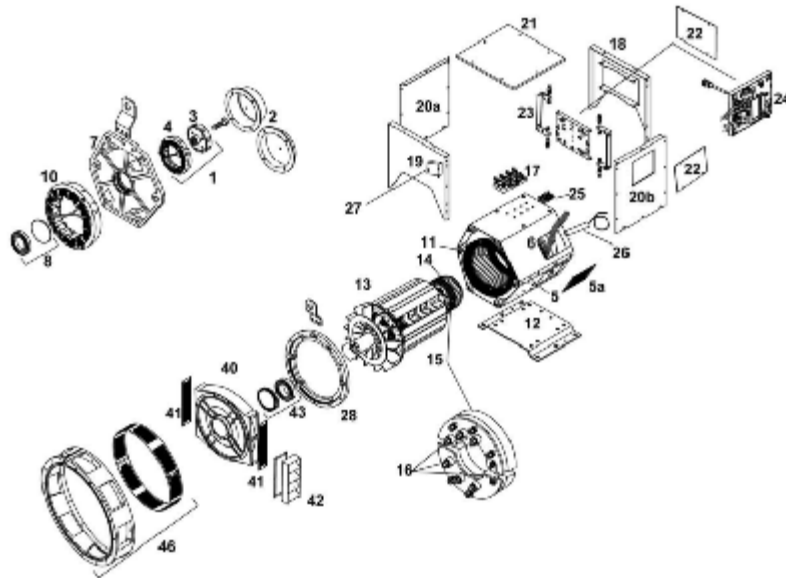
GENERAL ASSEMBLY PARTS LIST



GENERAL ASSEMBLY PARTS LIST

ITEM NO.	PART NUMBER	DESCRIPTION	QTY.
1	15209-003	UL-DECAL ELECTRICAL SHOCK CAN KILL	1
2	15209-036	PROP 65 WARNING DECAL	1
3	16250-000	.375-16 FLANGE NUT	2
4	16303-000	DECAL-OIL LEVEL	1
5	21698-001	TORX PAN HEAD SCREW #10	22
6	300112-14	224D BACK PANEL ASSY.	1
7	350028-68	224D FRONT PANEL ASSY.	1
8	351930-114	UCI224D2	1
9	481-000	LOCK .375 SPLIT	10
10	52077-000	DECAL-CAUTION OIL LEVEL	1
11	526-000	FLAT WASHER 5/16_3/8	2
12	598-000	#10 WASHER	12
13	63966-007	KIT, NAMEPLATE WINCO PTO	1
14	64214-047	WINCO LOGO	2
15	64515-000	DECAL- WARNING PTO	1
16	64516-000	DANGER STICKER	1
17	64605-000	SAFETY DECAL	1
18	64892-002	224D SERIES TOP COVER	1
19*	91099-044	SAE4 GEARCASE ASSEMBLY, 540 RPM (205054-031)	1
20*	91099-045	SAE4 GEARCASE ASSEMBLY, 1000RPM (205014-031)	1
21	91171-000	SHIELD	1
22	91369-000	DECAL- 540 RPM	1
23	91658-003	.375-16X1.5 HHB	10
24	91658-006	3/8-16X2-1/4 GR5	2
25	98479-000	WINCO #1 WORLDWIDE DECAL	1
26	Z25272	DECAL, LOAD CONNECTIONS - 1PH 4 CAVITY	1
27	Z2553	DECAL-OPERATOR INSTRUCTIONS	1

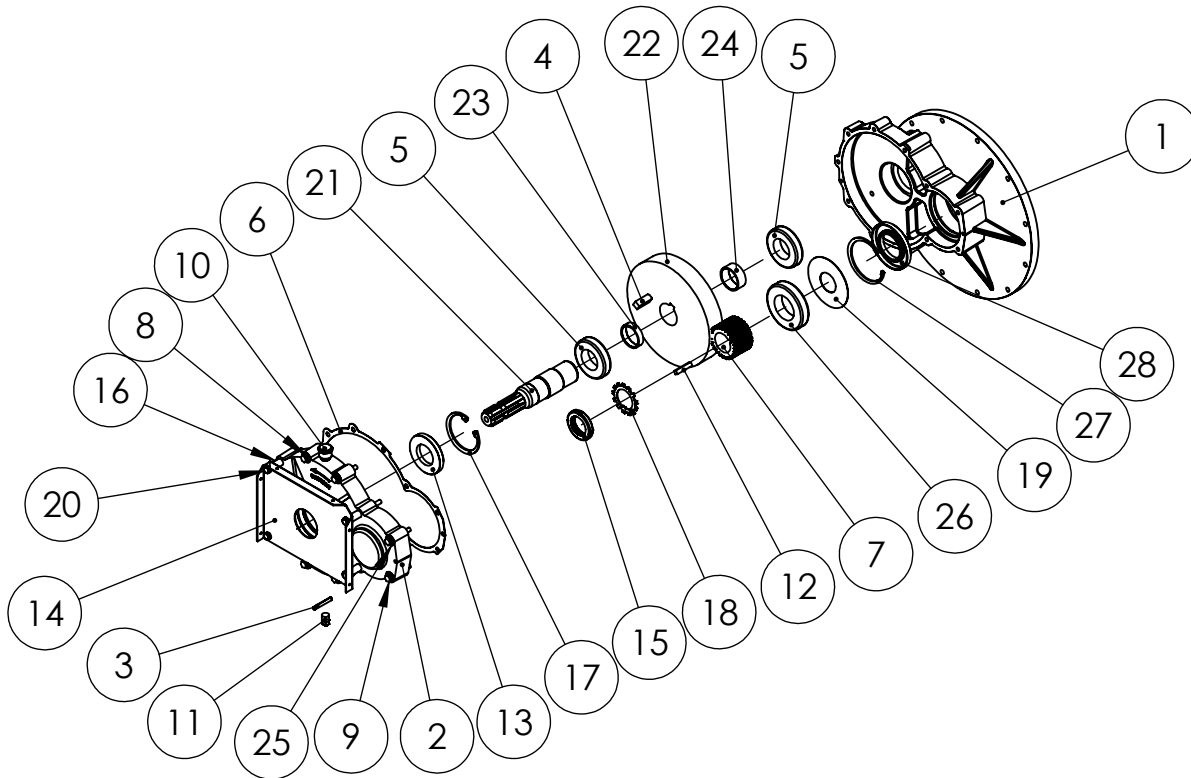
GENERATOR INFORMATION



ITEM	DESCRIPTION	2050X4-031
-	COMPLETE GENERATOR END	351930-114
-	STAMFORD MODEL	UCI224D2J
-	WINDING	06
24	AVR AS440	350818-2
For additional parts support, contact WINCO service.		

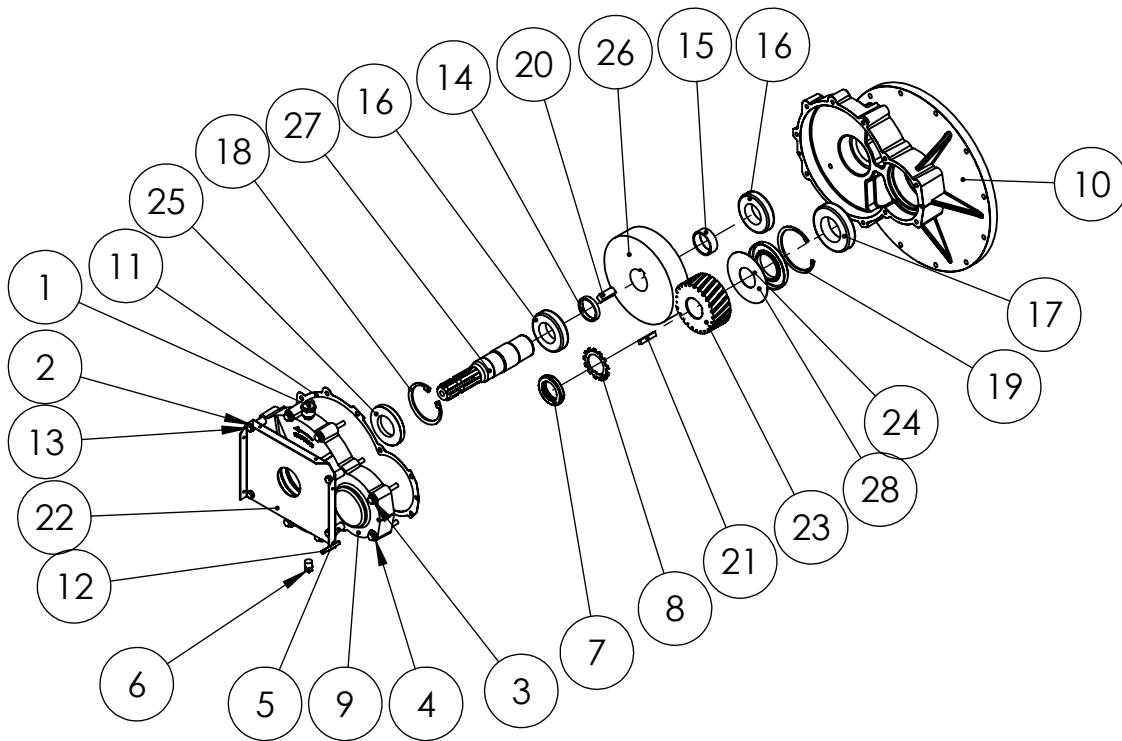
EXPECTED RESISTANCE (Ω) @ 22C	
MODEL	UCI224D2J
STATOR WINDING (PER PHASE SERIES CONNECTED)	0.049
ROTOR WINDING	0.64
EXCITER STATOR	21
EXCITER ROTOR (PER PHASE)	0.142
POSITIVE SEQUENCE (R1)	0.10
NEGATIVE SEQUENCE (R2)	0.15
ZERO SEQUENCE (R0)	0.10

GEARCASE ASSEMBLY (540 RPM)



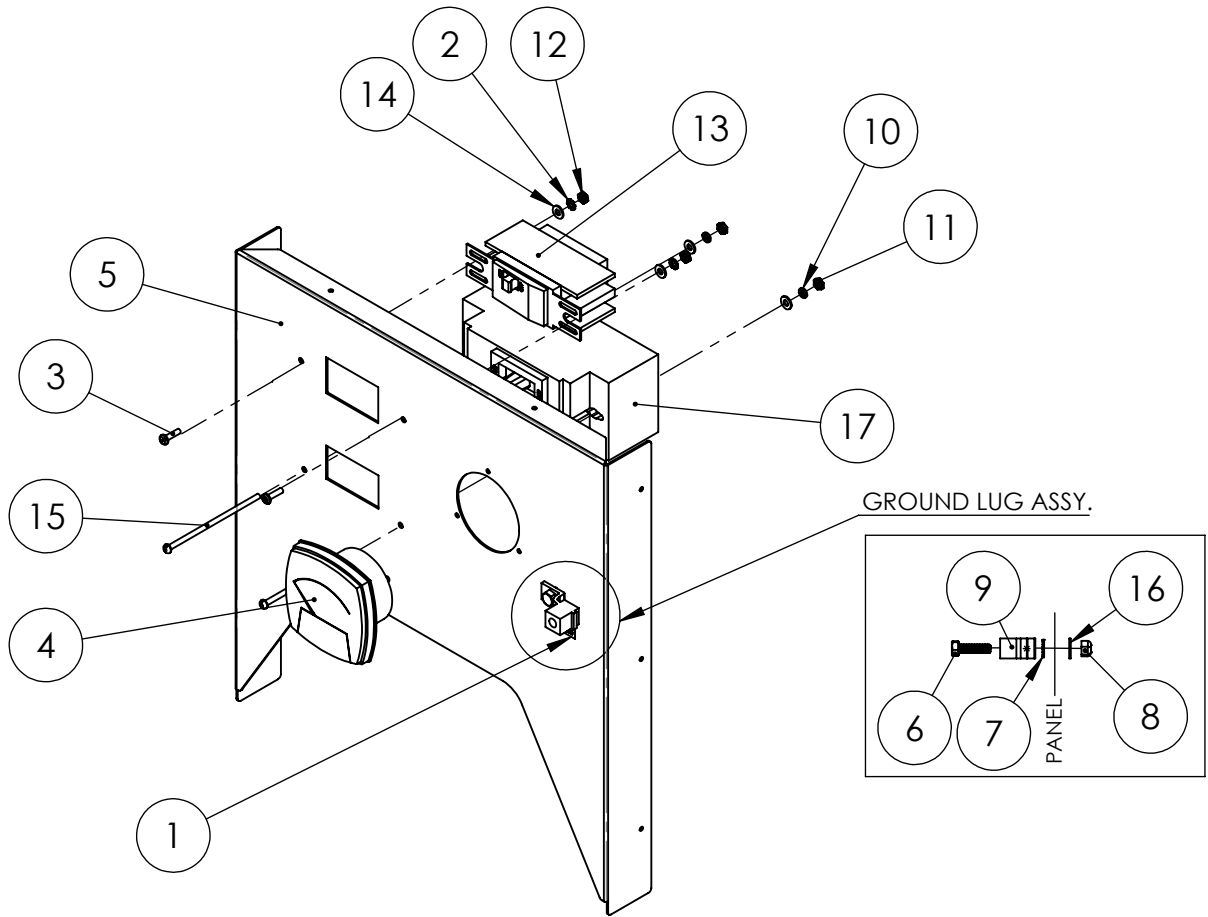
ITEM NO.	PART NUMBER	DESCRIPTION	QTY.
1	91100-040	GEAR CASE SUPPORT BRACKET	1
2	91099-006	GEAR BOX COVER	1
3	91106-000	SPRING PIN .25 X 1.875	2
4	91117-000	KEYSTOCK 1-15/32 X 1/2	1
5	91111-000	BEARING 6209-2RLD	2
6	91104-000	GASKET	1
7	91225-001	GEAR,SHAVED PINION,25 1.698 IN. ID , 540 RPM GEAR	1
8	480-000	LOCKWASHER 5/16 SPLIT ZINC	11
9	471-000	5/16-18 X 2.25	7
10	40716-000	BREATHER ASSEMBLY	1
11	643-000	PIPE PLUG .375	1
12	91123-001	KEY .3125 SQ X 1.625 L	1
13	91247-000	OIL SEAL 45X85X10TC	1
14	91170-001	BRACKET GUARD	1
15	65006-004	MACHINED LOCK NUT	1
16	62825-004	SPACER	4
17	91113-000	RETAINING RING 3-11/32	1
18	65006-005	GEARBOX LOCK WASHER	1
19	91345-002	SLINGER	1
20	91107-001	HHCS .3125-18 X 3.75	4
21	91344-000	SHAFT	1
22	91118-000	GEAR, DRIVER	1
23	91108-003	SPACER 2" X .125W X .468	1
24	91108-004	SPACER, RD TUBE, 2" X .125W X .813	1
25	526-000	FLAT WASHER 5/16_3/8	7
26	91112-000	BEARING 6211	1
27	91114-000	RETAINING RING 3-15/16	1
28	91247-003	OIL SEAL 55X100X10TC	1

GEARCASE ASSEMBLY (1000 RPM)



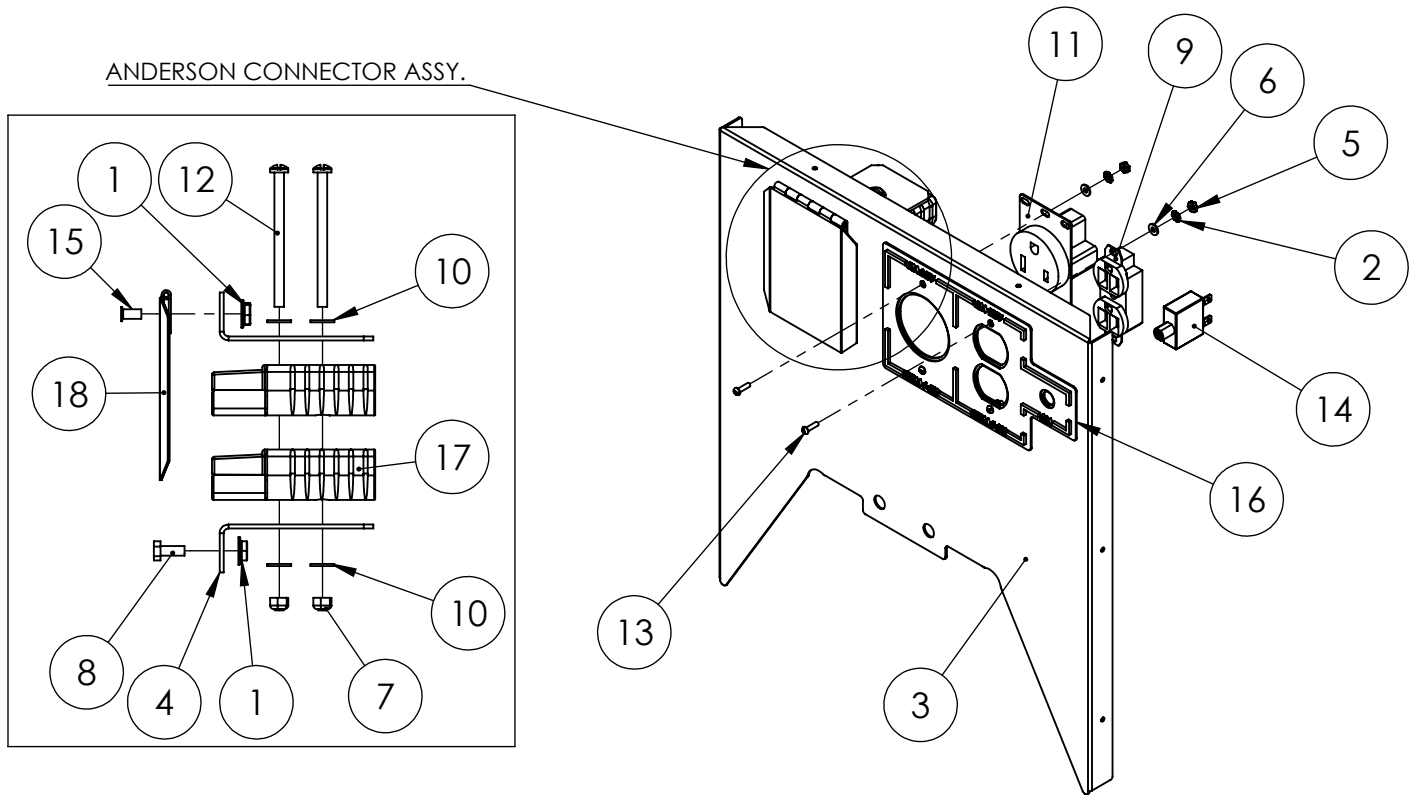
ITEM NO.	PART NUMBER	DESCRIPTION	QTY.
1	40716-000	BREATHER ASSEMBLY	1
2	480-000	LOCKWASHER 5/16 SPLIT ZINC	11
3	51101-000	.3125-18 X 2.75 HHCS	7
4	526-000	FLAT WASHER 5/16_3/8	7
5	62825-004	SPACER	4
6	643-000	PIPE PLUG .375	1
7	65006-004	MACHINED LOCK NUT	1
8	65006-005	GEARBOX LOCK WASHER	1
9	91099-006	GEAR BOX COVER	1
10	91100-040	GEAR CASE SUPPORT BRACKET	1
11	91104-000	GASKET	1
12	91106-000	SPRING PIN .25 X 1.875	2
13	91107-001	HHCS .3125-18 X 3.75	4
14	91108-001	SPACER 2" X .125W X .343	1
15	91108-002	SPACER, RD TUBE, 2" X .125W X .688L	1
16	91111-000	BEARING 6209-2RLD	2
17	91112-000	BEARING 6211	1
18	91113-000	RETAINING RING 3-11/32	1
19	91114-000	RETAINING RING 3-15/16	1
20	91117-000	KEYSTOCK 1-15/32 X 1/2	1
21	91123-001	KEY .3125 SQ X 1.625 L	1
22	91170-001	BRACKET GUARD	1
23	91224-001	GEAR (PINION) 1.698 IN. ID, 1000 RPM GEAR	1
24	91247-003	OIL SEAL 55X100X10TC	1
25	91247-000	OIL SEAL 45X85X10TC	1
26	91248-000	DRIVER GEAR (70 TEETH, SHAVED)	1
27	91344-000	SHAFT	1
28	91345-002	SLINGER	1

MLCB PANEL ASSEMBLY



ITEM NO.	PART NUMBER	DESCRIPTION	QTY.
1	15750-000	GROUND DECAL	1
2	21976-000	#8 LOCKWASHER EXTERNAL TOOTH	2
3	24198-000	BHMS #8-32 X 5/8	2
4	300102	FREQUENCY METER, 55-65HZ, 120V	1
5	350028-67	120/240V SINGLE PHASE MLCB PANEL	1
6	439-000	HHCS 1/4-20X1 GR2	1
7	4516-000	LOCKWASHER 1/4 EXTERNAL TOOTH	1
8	47517-000	.25-20 NYLOK	1
9	48043-000	TERMINAL GROUND	1
10	484-000	LOCKWASHER #10 SPLIT	2
11	5113-000	NUT HEX # 8	2
12	5113-000	NUT HEX # 8	2
13	57030-000	CIR. BRK. 50A-2PL-240V	1
14	598-000	#10 WASHER	4
15	62583-001	RHMS 8-32 X 4	2
16	65005-000	.25 FLATWASHER SS	1
17	91447-005	CIR BRK 200A 2PL 240V	1

RECEPTACLE PANEL ASSEMBLY



ITEM NO.	PART NUMBER	DESCRIPTION	QTY.
1	16248-000	.25-20 FLANGE NUT	4
2	22989-000	#6 LOCKWASHER	4
3	300112-13	120/240V SINGLE PHASE RECEPTACLE PANEL	1
4	300117-3	LARGE ANDERSON REC. SUPPORT	2
5	394-000	NUT HEX #6-32	4
6	425-000	#6 FLATWASHER	4
7	47517-000	.25-20 NYLOK	2
8	476-000	.25-20X.625 HHB	2
9	50766-000	RECEPTACLE NEMA 5-20 DUPLEX	1
10	512-000	.25 WASHER	4
11	57325-000	RECEPTACLE, NEMA 6-50R	1
12	61993-001	RHMS 1/4-20 X 3.5	2
13	7792-001	BZ RHMS 6-32X.5	4
14	91286-001	CIRCUIT BREAKER, 20A, 1 PL	1
15	94980-001	THREAD STUD .25-20X.625	2
16	98479-001	30-50PTO REC. DECAL	1
17	EE2331	HOUSING 350A	2
18	G7213-2	WELDMENT COVER ASSEMBLY	1

WIRING DIAGRAM

120/240 1-PH

