

PARTS LIST
 GR50H4-C GR50H4-CL
 GR50H4-J GR50H4-JL
 GR50H4-D GR50H4-DL
 GR50H4-R/L GR50H4-T

<u>FIND NO.</u>	<u>PART NO.</u>	<u>DESCRIPTION</u>	<u>REQ'D/UNIT</u>
1	EC-17205	Engine, Herc. (GR50H4-CL & JL & DL	
1	EC-17204	Engine, Herc. (GR50H4-C & J & D & T	1
2	G-5823	Skid Assembly	1
	9268	Screw 5/8-11 x 1-1/2	2
	1189	Washer 5/8 Flat Steel	2
	4621	Nut 5/8-11 Hx	2
	1148	Washer 5/8 Lock	2
3	S-5813-1	Coupling Disc	2
	S-6896-1	Screw 3/8-16 x 3/4	7
	1185	Washer 3/8 Flat Steel	7
4	S-6878	Fan Spacer	4
	S-6896	Screw 3/8-16 x 2-1/4	4
5	G-6064	Fan Assembly	1
6	(Not Applicable)		
7	G-5826	Fan Guard	1
	3530	Screw 1/4-20 x 1-1/2	1
	5805	Nut 1/4-20	2
8	G-5737-7	Stator & Frame Assembly	1
9	G-5728-1	Frame Assembly	1
10	G-3836-25	Stator, Electrical	1
11	S-7044	Lift Eye	2
	4621	Nut 1/2-13	2
12	G-5390-1	Engine Adapter	1
13	G-5805	Revolving Elec. Assembly	1
14	N-585	Shaft	1
15	G-5710	Heat Sink Assembly	1
16	EE-2123	Diode - Forward	1
17	EE-2122	Diode - Reverse	1
18	G-5726	Rotor Electric Assembly	1
19	G-5743	Exciter, Armature	1
20	I-825-2	Coupling Hub	1
	3887	Screw 1/2-13 x 1/2 Soc. Hd.	1
21	D-49	Bearing	1
22	G-5749	Exciter Frame Assembly	1
	S-6874	Exciter Frame	1
	3582	Screw 5/16-18 x 1-1/4 Hx Hd	12
	1116	Washer I. T.	12
	G-5725	Field Pole Assembly	Set of 4
	J-586	Insulator	8
	H-1064	Field Coil Assembly	Set of 4
23	S-6797	Bearing Retainer	1
	S-6872	Bearing Spacer	1
	3522	Screw 1/4-20 x 1/2	2
	1114	Washer 1/4 Int T	2
24	I-879	Bearing Housing	1
	3582-2	Screw 3/8-16 x 1-1/4 Gr 5	6
	1144	Washer, SplitLock	6

PARTS LIST
GR50H4-C GR50H4-CL
GR50H4-J GR50H4-JL
GR50H4-D GR50H4-DL
GR50H4-R/L GR5H4-T

<u>FIND NO.</u>	<u>PART NO.</u>	<u>DESCRIPTION</u>	<u>REQ'D/UNIT</u>
25	S-5872-1	Bracket	1
26	S-6076	Bracket	1
27	EE-1201	Start Contactor	1
28	3547-1	Screw 5/16-18 x 1-1/4 Brass	2
29	J-592	Washer, Nylon	1
30	J-593	Washer, 5/16 Nylon	1
31	Z-283	Nameplate, Positive Battery	1
32	Z-284	Nameplate, Negative Battery	1
	1034	Washer Flat Brass	6
	4710	Nut 5/16-18 Brass	4
	1115	Washer 5/16-18 Brass	6
33	OP-23	Oil Pressure Switch 1/8 NPT	1
34	WT-22	Water Temperature Sender 1/4 NPT	1
35	OP-22	Oil Pressure Sender	1
36	WT-23	Water Temperature Switch 1/2 NPT	1
37	EN-18.174	Tee 1/8 M to 1/8 F to 1/8 F	1
38	EN-18.020	Bushing 3/8 M to 1/4 F NPT	1
39			
40	OP-24	Oil Pressure Switch	1

Wiring Diagram F-4628-5 J Voltage & T
Wiring Diagram F-4628-4 C Voltage
Wiring Diagram F-4628-2 D Voltage
Wiring Diagram F-4628-6 R Voltage

PARTS LIST
ENGINE & GENERATOR
CONTROL PANEL ASSEMBLY

<u>REF. NO.</u>	<u>PART NO.</u>	<u>DESCRIPTION</u>	<u>REQ./UNIT</u>
	G-5825-3	Panel Assy Complete	
1	G-5739-3	Panel Cabinet Ass'y	1
2	S-6854	Panel Side - Left	1
3	S-6856	Panel Side - Right	1
4	S-6857	Panel Bottom	1
5	S-6853	Panel Top	1
	3522	Screw 1/4-20 x 1/2 H.H.	8
	1114	Washer 1/4 Int.	8
	5805	Nut 1/4-20 H.H.	8
6	G-5722-3	Terminal Board Ass'y	1
7	J-578	Terminal Board	2
	3526	Screw 1/4-20 x 1 H.H.	4
	1114	Washer 1/4	4
	5805	Nut 1/4-20	4
8	S-6850	Bracket - Mounting	2
9	B-718	Link	10
	3670-1	Screw 1/2-13 x 2 Hex Brass	13
	1118	Washer 1/2 Int. T.T.	39
	1031	Washer 1/2 Flat Brass	39
	4716	Nut 1/2-13 Hex Brass	26
10	6100	Grommet	1
11	EE-646-1	Terminal Board 6-Pole	1
12	EE-646-2	Insulator	2
	2045	Screw #8-32	2
	5802	Nut #8-32	2
13	EE-653	Terminal Board 8-Pole	3
14	EE-653-8	Insulator	1
15	EE-653-2	Insulator	2
	2045	Screw #8-32	6
	5802	Nut #8-32	6
16	6221	Plug Button	1
17	G-5847	Auto. Exciter Field Flasher	1
18	EE-471-2	Fuse 1 Amp	1
	2005	Screw #6 x 1/2 Lg.	2
	5801	Nut #6-32 H.H.	2
19	6905	Bushing	1
20	G-5741-2	Engine & Generator Sub Ass'y	1
21	S-6871	Panel Bottom	1
22	W-166-2	Shockmounts	4
23	EE-1750	Voltage Regulator	1
	2087	Screw 10-24 x 3/4 RHMS	4
	5803	Nut #10-24	8
24	R-91	Rheostat	1
25	EE-240	Knob - Rheostat	1
26	Z-1123	Nameplate - Adjust Volts	1

PARTS LIST (CONT'D)
ENGINE & GENERATOR
CONTROL PANEL ASSEMBLY

PL-51024
(page 2 of 3)

<u>REF. NO.</u>	<u>PART NO.</u>	<u>DESCRIPTION</u>	<u>REQ./UNIT</u>
27	EE-1207-1	Socket - Relay	1
	2011	Screw #6-32 x 1-1/4 RHMS	2
	5801	Nut #6-32	2
28	EE-1207-2	Hold Down Clamp	1
29	EE-1207-3	Relay	1
30	6100	Grommet	1
31	R-171	Resistor	1
32	EE-646-1	Terminal Block 6-Pole	2
33	EE-646-2	Insulator	2
34	EE-653	Terminal Block 8-Pole	2
35	EE-653-2	Insulator	1
36	EE-653-8	Insulator	1
	2045	Screw #8-32 x 1/2	6
	5802	Nut #8-32	6
37	G-5724	Front Panel Ass'y	1
	2085	Screw #10-24 x 1/2 Lg.	3
	5803	Nut #10-24	3
38	S-6870	Brace	1
	2085	Screw #10-24 x 1/2 Lg.	2
	1019	Washer	2
39	EE-1811	Eng. Safety Circuit Breaker	1
	EE-1812-5	Circuit Breaker Heater	1
40	R-107	Resistor - Adj.	1
	1172	Washer - Centering	2
	2100	Screw #10-24 x 3 RHMS	1
	5803	Nut #10-24	2
41	Z-1671	Nameplate - Engine Safety	1
42	EE-937-1	Failure Light	1
	EE-933-1	Lamp 12 Volt	1
43	Z-2092	Nameplate Engine Shutdown	1
44	AM-12	Ammeter	1
45	OP-21	Oil Pressure Gauge	1
46	WT-21	Water Temperature	1
47	EE-151	Switch	3
48	Z-2093	Nameplate Stop-Run	1
49	Z-920-1	Nameplate Off-On	1
50	EE-425	Fuse Holder	1
51	EE-445-2	Fuse Amp	1
52	Z-2116	Nameplate - Regulator	1
53	EE-924-1	Panel Lamp Holder	2
	EE-940-1	Lamp 12 Volt	2
54	G-5723	Panel Top Ass'y	1
	2085	Screw #10-24 x 1/2	3
	5803	Nut #10-24	3
55	4957	Tinnerman	7
	2325	Screw 1/4-20 x 1/2 Truss Head	7

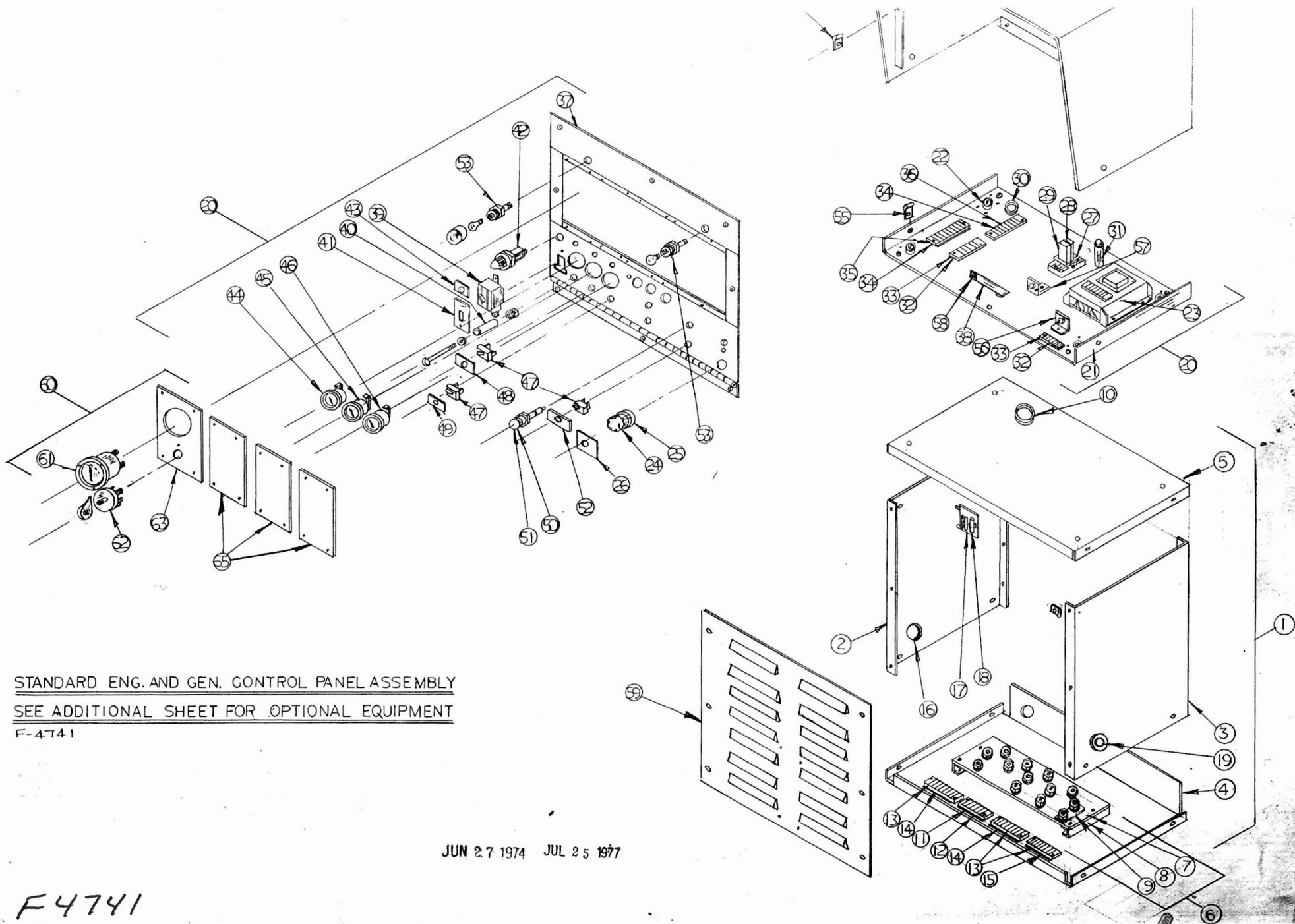
ENGINE & GENERATOR
CONTROL PANEL ASSEMBLY

<u>REF. NO.</u>	<u>PART NO.</u>	<u>DESCRIPTION</u>	<u>REQ./UNIT</u>
56	G-5819	Rectifier Ass'y Blocking	1
	J-546	Shoulder Washer - Nylon	2
	J-583	Washer -Flat-Nylon	2
	2087	Screw #10-24 x 3/4	2
	5803	Nut #10-24	2
57	G-5183-3	Rectifier Ass'y - Blocking	1
58	4956	Tinnerman	1
	6224	Plug Button 23/32 Dia.	3
	6223	Plug Button 1" Dia.	3
	6218	Plug Button 1/2" Dia.	2
59	S-6909	Panel Front	1
	4957	Tinnerman	6
	3522	Screw 1/4-20 HH	6
	1183	Washer 1/4 Flat Stl.	6
60	G-5755-1	Panel Voltmeter & Sel. Switch	1
61	VM-35	Voltmeter	1
62	EE-275	Selector Switch	1
63	S-6833	Meter Panel	1
64	S-6832	Basic Panel	3

(Not Shown
Mts on Engine)

WT-22	Water Temp Gauge Sender	1
WT-23	Water Temp Safety Switch	1
OP-22	Oil Pressure Gauge Sender	1
OP-23	Oil Pressure Safety Switch	1
OP-24	Start Motor Safety Switch	1

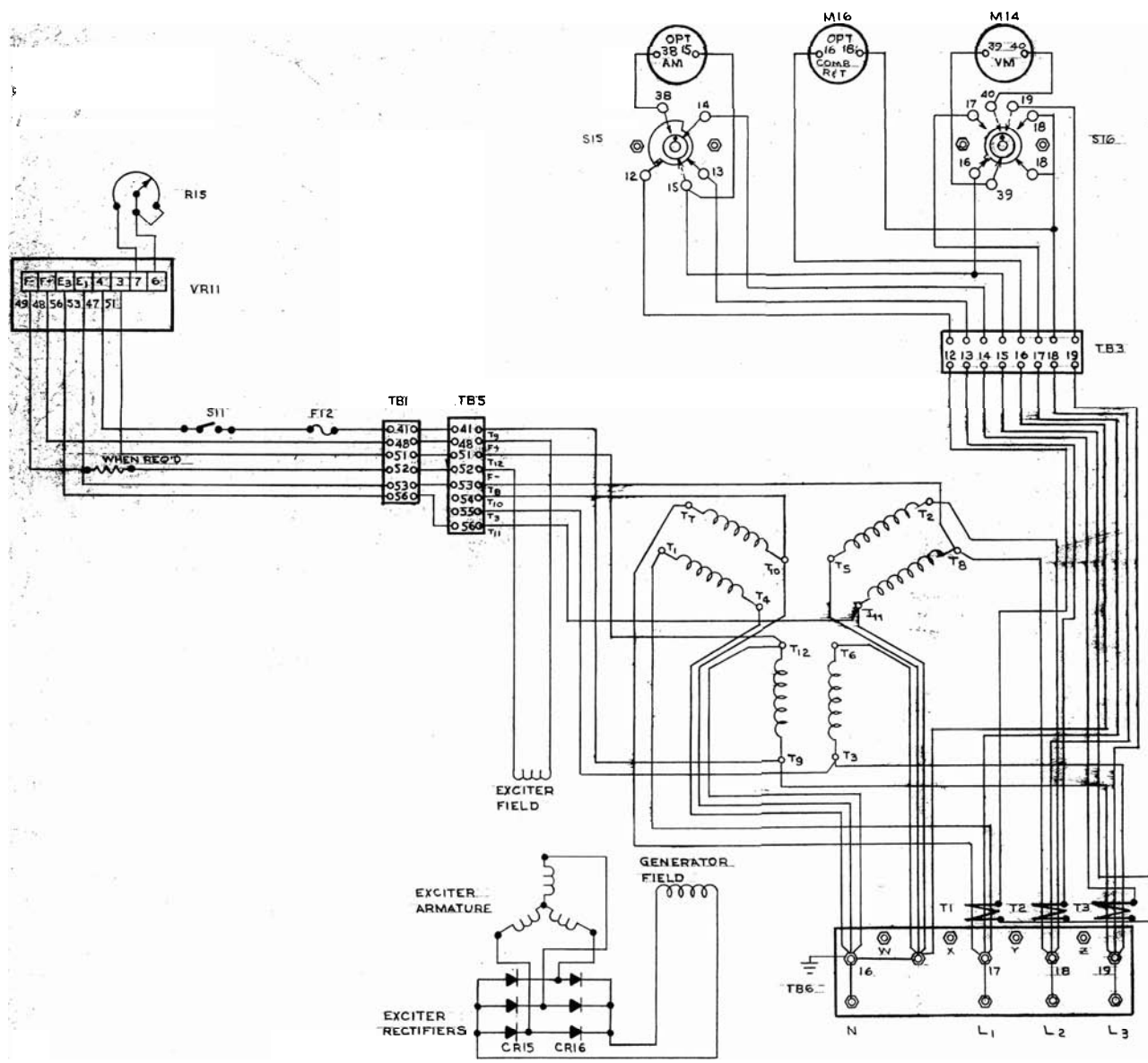
Wiring Diagram	F-4628-5	Sheets 1 & 2
	F-4628-3	Sheets 1 & 2
	F-4628-4	Sheets 1 & 2
Parts Drawing	F-4741	



STANDARD ENG. AND GEN. CONTROL PANEL ASSEMBLY
SEE ADDITIONAL SHEET FOR OPTIONAL EQUIPMENT
 F-4741

JUN 27 1974 JUL 25 1977

F4741



CONTROL CABINET PARTS LIST		
REF	PART NO.	DESCRIPTION
CR15	EE-2122	RECTIFIER
CR16	EE-2123	RECTIFIER
F12	EE-445.02	FUSE - VOLTAGE REGULATOR 3-AMP
M14	VM-35	VOLTMETER AC 0-500 VOLT
M15		AMMETER AC
M16		COMB ETM. FM OR ETM. OR FM
R15	R-91	RHEOSTAT - VOLTAGE ADJUSTMENT
S11	EE-1751	SWITCH - VOLTAGE REGULATOR
S16	EE-275	SWITCH - VOLTMETER SELECTOR
T1,2,3		TRANSFORMER, CURRENT
TB1,2,3		TERMINAL BOARD, TOP CABINET
TB5		TERMINAL BOARD, LOWER CABINET
TB6		TERMINAL BOARD, MAIN LOAD
VR11	EE-1750	VOLTAGE REGULATOR
S15	EE-276	SWITCH - AMMETER SELECTOR

120/208 TO 139/240 VOLT, 60 HZ
 115/200 TO 133/233 VOLT, 50 HZ

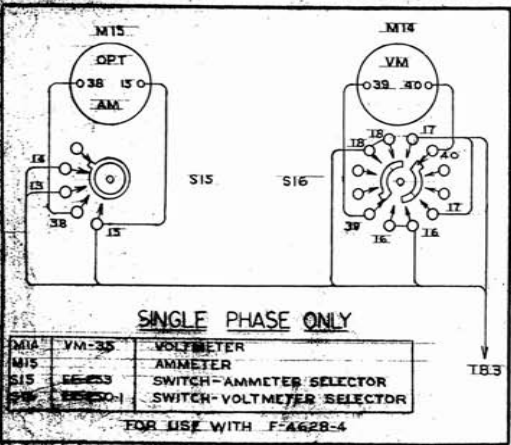
REWORK	6-2672	FSC							
CHANGE	WAR ORIGINALLY	DATE	CHK'D	CHK. REQUEST	NO. REQ'D.	MICROFILM DATA			
									JUL 23 1977
									JUN 27 1974

Z-2095-2	
SCHEMATIC DIAGRAM - GENERATOR/REGULATOR	
INSTRUMENTATION	
SCALE	MODEL NO.
DATE 6-26-72	PART NO. IF-4628
DWG. FSC	CHK'D
WINPOWER MFG. CO. NEWTON, IOWA	

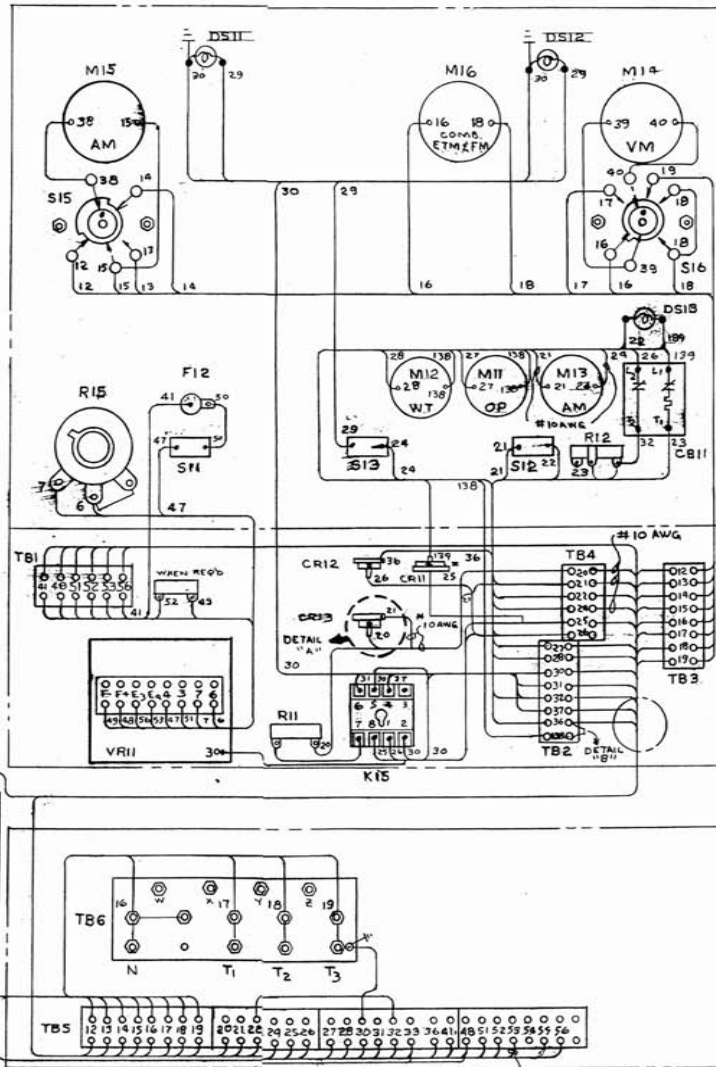
IF4628-2

REF. PART NO.	DESCRIPTION
CR11	ET-3811 CIRCUIT BREAKER-SAFETY SHUTDOWN
CR12	K-3833 RECTIFIER-BLOCKING
CR13	G-5819 RECTIFIER-BLOCKING
CR14	G-5847 RECTIFIER-FIELD FLASHER
EE-940-1	LAMP-PANEL
EE-938-1	LAMP-FAILURE
EE-443-1	FUSE-FIELD FLASHER
EE-1202-3	RELAY-CRANKING CONTROL
OP-21	GAUGE-OIL PRESSURE
WT-21	GAUGE-WATER TEMPERATURE
AM-35	GAUGE-AMMETER-CHARGE-30-0-30
VM-35	VOLTMETER A.C. 0-500V
AM-35	AMMETER-AC 0-500A
CR15	COMBINATION E.T.M (F.M. OR F.M. OREM)
R-71	RESISTOR-33 OHM, 10 WATT
R-107	RESISTOR-10 OHM, 25 WATT
R-91	RHEOSTAT-VOLTAGE REGULATOR
EE-471-2	FUSE-VOLTAGE REGULATOR
EE-151	SWITCH-VOLTAGE REGULATOR
EE-151	SWITCH-ENGINE START-RUN
EE-151	SWITCH-PANEL LAMPS
EE-276	SWITCH-AMMETER SELECTOR
EE-275	SWITCH-VOLTMETER SELECTOR
TB5	TERMINAL STRIP-LOWER CABINET
TB6	TERMINAL STRIP-MAIN LOAD
TB23	TRANSFORMER-AMMETER CURRENT
TB13	GENERATOR OUTPUT TERMINALS
EE-175D	VOLTAGE REGULATOR-GENERATOR

REF. PART NO.	DESCRIPTION
DS12	EE-584-1 LAMP-PANEL
DS13	EE-588 LAMP-FAILURE
K15	EE-1202-4 RELAY-CRANKING CONTROL
R16	R-357 RESISTOR-100 OHM, 10 WATT, (OPTIONAL)



DATE	BY	CHKD	NO.	REVISION
JUL 25 1977				
JUN 27 1974				



MUST BE OF SUFFICIENT LENGTH FOR ALTERNATE CONNECTION TO #95.

COMPLETELY REMOVE
DIPOL ARRY & LEADS

NOTE:
CONNECTION DIAGRAM FOR
ENGINE EQUIPPED WITH
BATTERY CHARGING
GENERATOR.

DETAIL "A"



NOTE:
REMOVE JUMPER FROM #1
TO #15A (ADD RESISTORS
R16 AS SHOWN FOR B.V.C.
CONTROL).

DETAIL "B"

NOTE:
THIS DIAGRAM IS SUITABLE FOR
ENGINE 12 (24 VOLT D.C.)
ENGINE CONTROL AND 120/200V
240/240, 277/280 OR 130/280
VOLT A.C. PHASE GENERATOR
CONTROL, EXCEPT THAT FOR
HIGH VOLTAGE UNITS, MIN MUST
BE ISOLATED BY STEP-DOWN
TRANSFORMER.

Z-2095

**WIRING DIAGRAM -
GENERATOR, INSTRUMENT
VOLTAGE REGULATOR,
AND ENGINE CONTROLS**

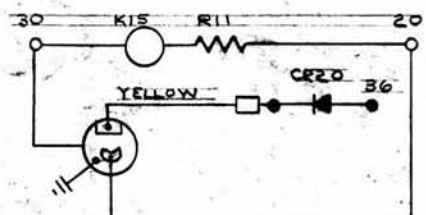
SCALE: 1/8" = 1"	MODEL NO. F-4628
DATE: 9-21-72	PART NO. 1E-4628
DESIGN: FSC	CHKD:

WINPOWER MFG. CO.
NEWTON, IOWA

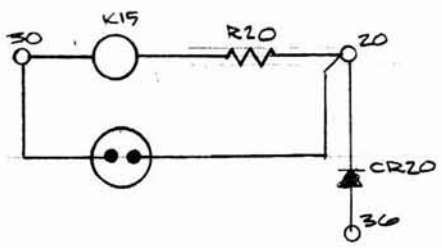
ENGINE PARTS LIST		
REF	PART NO.	DESCRIPTION
B1	SEE ENGMAN	START MOTOR W/SOLENOID SWITCH
BT1	VARIOUS	BATTERY
C1	SEE ENGMAN	CAPACITOR (SPARK IGNITED ENGINES ONLY)
E1	OP-22	SENDER - OIL PRESSURE
E2	WT-22	SENDER - WATER TEMPERATURE
E3	SEE ENGMAN	SPARK PLUG (SPARK IGNITED ENGINES ONLY)
G1	SEE NOTE #4	ALTERNATOR, OR GENERATOR (BATT CHARGE)
K1	EE-1201 (12V)	RELAY STARTER MOTOR (EE-124) 24V
K2	SEE ENGMAN	SOLENOID - FUEL
K3	SEE ENGMAN	CHOKE (GASOLINE ONLY)
R1	SEE ENGMAN	RESISTOR COIL (OPTIONAL) SPARK IGNITED ENG. ONLY
R2	SEE ENGMAN	RESISTORS - SPARK PLUG
S1	OP-23	SWITCH - LOW OIL PRESSURE (CLOSED 0-15 PSI)
S2	WT-23	SWITCH - HIGH WATER TEMPERATURE
S3	OP-24	SWITCH - STARTER MOTOR SAFETY (CLOSED 0-35 PSI)
S4	SEE ENGMAN	SWITCH - OVERSPEED (OPTIONAL)
S8	SEE ENGMAN	SWITCH - VACUUM (GASEOUS FUELS ONLY)
T1	SEE ENGMAN	COIL IGNITION (SPARK IGNITED ENGINES ONLY)
VR1	SEE ENGMAN	VOLTAGE REGULATOR - BATTERY CHARGING
S6	SEE ENGMAN	DISTRIBUTOR ASSEMBLY (SPARK IGNITED ENGINE ONLY)

CONTROL CABINET PARTS LIST		
REF	PART NO.	DESCRIPTION
CB11	EE-1811	CIRCUIT BREAKER - SAFETY SHUTDOWN
CR12	G-583-3	RECTIFIERS - BLOCKING
CR13	G-5819	RECTIFIER - BLOCKING
CR14	G-5847	RECTIFIER - FIELD FLASHER
DS11,12	EE-940-1	LAMP - PANEL (12V)
DS13	EE-938-1	LAMP - FAILURE (12V)
F11	EE-445-2	FUSE - FIELD FLASHER
K15	EE-1207-3	RELAY - CRANKING CONTROL (12V)
M11	OP-21	GAUGE - OIL PRESSURE
M12	WT-21	GAUGE - WATER TEMPERATURE
M13	AM-12	GAUGE - AMMETER CHARGE 30-0-30
R11	R-171	RESISTOR - 33 OHM, 10 WATT
R12	R-107	RESISTOR - 10 OHM, 25 WATT
R16	R-157	RESISTOR - 100 OHM, 10 WATT
S12	EE-151	SWITCH - ENGINE START - RUN
S13	EE-151	SWITCH - PANEL LAMP
CR20	G-5819	RECTIFIER - BLOCKING - OPT.
R20		RESISTOR - 125 OHM, 10 WATT

2-2095-2
Page 2



DETAIL "A" ALTERNATOR MOTOROLA NO. RA12N-4510 W/REGULATOR NO.R3-1
NOTE:
(1) ADD CR20 RECTIFIER.



DETAIL "C" ALTERNATOR DELCO REMY #11023
NOTE
1. ADD RECTIFIER CR20
2. REMOVE R11 & REPL

D	WAS #26, VRI	7-31-73	D.B.	F	REVISED #139 10/20/73	3-31-76	CS	
E	ADD DETAIL	1/24/73	F.C.	E	KBD DET. C	10-18-73	M.E	
	REDRAWN	6/22/72	FSC	C	PLY. TO GEN.	5-18-73	EC	
CHG	WAS ORIGINALLY	DATE	CHK'D	CHG. REQUEST				JUL 25 1977