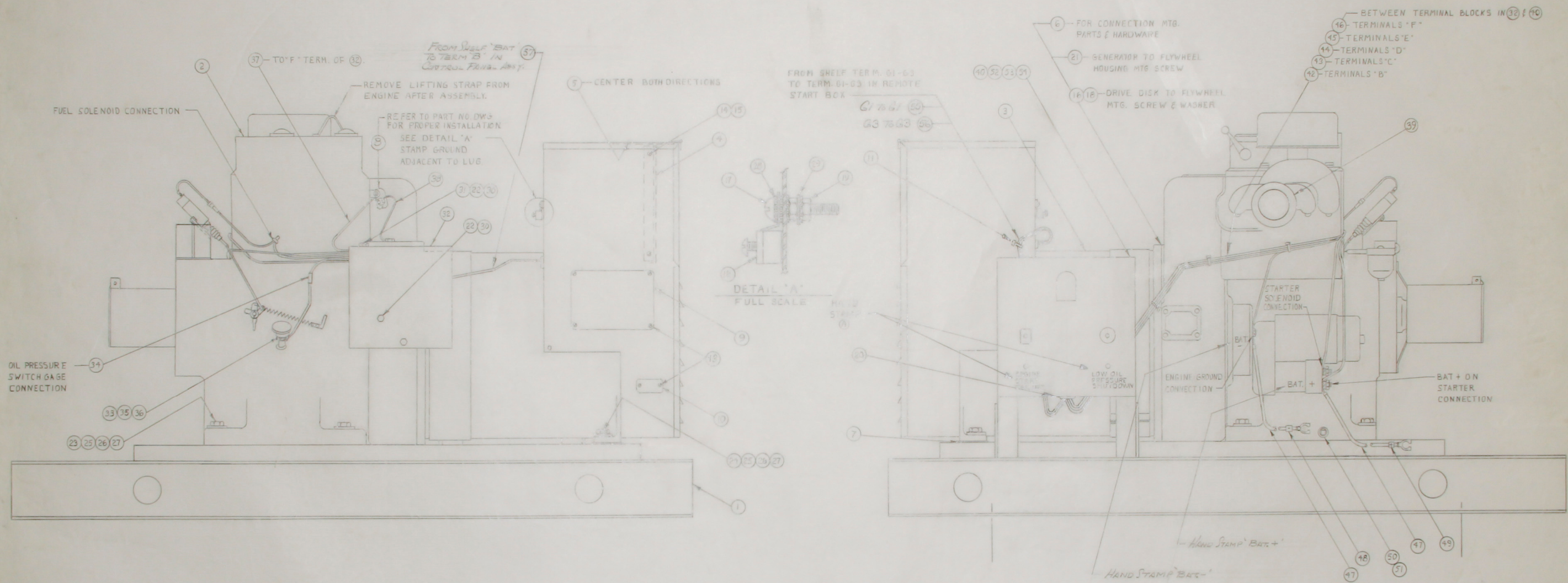


MODEL NO.	PART NO.	ITEM ②	ITEM ③	ITEM ⑤	ITEM ⑥	ITEM ⑧	ITEM ⑩	ITEM ⑪	ITEM ⑫	ITEM ⑬	ITEM ⑭	ITEM ⑮
CSA8PLDS-17RP/Q	D-93184-1	92375	D-91675-15	B-91649-10	B-92952	B-91713-1	C-92632	B-23296-15	B-23301-100	D-82306	FS-47	C-91851-2
CSA8PLDS-3RP/Q	D-93184-2	92375	D-91675-15	B-91649-10	D-92952	PER ORDER	C-92632	B-23296-15	B-23301-100	D-82306	PER ORDER	C-91851-2
CSA8PLDS-4RP/A	D-93184-3	92375	D-91675-14	B-91649-6	B-92952	B-91713-1	C-92632	B-23296-15	B-23301-100	D-82306	FS-47	C-91851-2
CSA6SPPLD4D-529A	D-93184-5	92359	D-92081-3	NONE	B-92952	PER ORDER	C-92632	B-23296-15	B-23301-100	D-82306	PER ORDER	C-94408



ITEM	PART NO.	QUAN.	NAME	DETAILS	ITEM	PART NO.	QUAN.	NAME	DETAILS	ITEM	PART NO.	QUAN.	NAME	DETAILS
22	481	3	LOCKWASHER	3/8 SPLIT	41	B-23298-64	1	LEAD WIRE ASSEMBLY	#18 GREEN					
21	23597	8	SCREW, ALLEN SOC. HD.	5/8-16 17/8	43	B-23300-60	1	LEAD WIRE ASSEMBLY	#18 ORANGE					
20	A-91715	3	GROMMET		42	B-23297-143	1	LEAD WIRE ASSEMBLY	#18 RED					
19	638	2	HEX NUT	1/4-20	41									
18	480-1	6	LOCKWASHER	5/16 SPLIT	10	SEE TABLE	1	REMOTE START PANEL ASSY.	SEE NOTE #2					
17	424	1	SCREW, RD. HD. BRASS	1/4-20 1/4	39	B-91831-6	1	MUFFLER, SPARK ARRESTOR						
16	A-91542	6	SCREW, HEX HD. CAP	5/16-18 3/4	38	SEE TABLE	1	LEAD WIRE ASSY.	#12 WHT.					
15	55595	4	SCREW, RD. HD. MACH.	#10-32 X 1	37	SEE TABLE	1	LEAD WIRE ASSY.	#18 BLK.					
14	A-91915-1	4	WELDNUT (VIBRATION INVL)		36	A-92386-3	1	PIPE NIPPLE	1/8 N.P.T.					
13	10809	6	SCREW, SELF TAPPING	#4 X 1/4	35	22455	1	PIPE COUPLING	1/8 N.P.T.	57	B-23300-8	1	LEAD WIRE ASSEMBLY	#18 GREEN
12	A-48042	1	GROUND LVG		34	A-58077	1	CONNECTOR		56	B-23299-44	1	LEAD WIRE ASSEMBLY	#18 GR.
11	A-49975	1	CABLE TIES		33	B-91689	1	OIL PRESSURE SWITCH GAGE		55	B-23297-26	1	LEAD WIRE ASSEMBLY	#18 GR.
10	A-56813	1	NAMEPLATE (C.S.A.)		32	SEE TABLE	1	CONTROL PANEL ASSEMBLY		54	456	4	HEX NUT	#10-24
9	SEE TABLE	1	NAMEPLATE		31	20604	1	WASHER	1/2 10/10/600	53	22423	4	LOCKWASHER	#10 EXT.
8	SEE TABLE	1	HIGH TEMP SWITCH		30	464	3	SCREW, HEX HD. CAP	3/8-16 X 3/4	52	420	4	SCREW, RD. HD. MACH.	#10-24
7	A-91555	2	SHIM		29	512	1	FLAT WASHER	1/4	51	A-21856	1	NIPPLE	3/8 N.P.T.
6	D-92296-B	1	ADAPTER PARTS INSTALLATION		28	4516	4	LOCKWASHER	1/4 EXT.	50	A-21857	1	COUPLING	3/8 N.P.T.
5	SEE TABLE	1	LABEL SCHEMATIC DIAGRAM		27	636	4	LOCKWASHER	1/2 SPLIT	49	B-24862-14	1	BATTERY CABLE I.D.	+
4	SEE TABLE	1	PANEL ASSEMBLY		26	1744	4	HEX NUT	1/2 X 13	48	B-24862-73	1	BATTERY CABLE I.D.	+
3	SEE TABLE	1	GENERATOR ASSEMBLY		25	A-21867	4	FLAT WASHER	1/2 X 1/40 D	47	B-55220-11	2	BATTERY CABLE	+
2	SEE TABLE	1	ENGINE	SEEC-24714	24	A-57580	2	SCREW, HEX HD. CAP	1/2-13 1/11-1/2	46	B-23302-51	1	LEAD WIRE ASSEMBLY	#18 YELLOW
1	C-92595	1	BASE ASSEMBLY		23	A-57580-1	2	SCREW, HEX HD. CAP	1/2-13 1/2-1/2	45	B-23299-69	1	LEAD WIRE ASSEMBLY	#18 BLUE

NOTE:
 1. FOR WIRING CONNECTIONS SEE B-93200
 2. FOR REMOTE START SCHEMATIC SEE B-82286

11	⑩ WAS A-91672-2, ⑮ WAS A80	3/1885	D.W.	
10	-1, -3 & -4 FIN WAS FS-1	7/1483	D.W.	
9	93184-5, ITEM ⑩ WAS A-82306	7/284	D.W.	
8	ADDED -5	1/1483	D.W.	
7	(8) ⑩ (9) ADDED TO -1 & -2	9/228	D.W.	
	-4 ADDED			
6	(4) WAS C-91851	5/178	D.W.	
5	ADDED HAND STAMPING (A)	1/1382	D.W.	
4	ADDED (B)	1/2381	D.W.	
3	ADDED -3 (9) (10) (11)	7/284	D.W.	
2	DELETED (7) B-23296-15	6/268	D.W.	
	BETWEEN 'F' TERMS IN ⑩ & ⑫			
1	ORIGINAL			

REF: SEE 050138 FOR CHANGING DWG OF BKW UNIT #A91948 FOR 10 SCHEMATIC.

ALL DIMENSIONS GIVEN IN INCHES—WORK TO DIMENSIONS—DO NOT SCALE—SAMPLES MUST BE APPROVED BY DYNA TECHNOLOGY ENGINEERING DEPT BEFORE PROCEEDING WITH PRODUCTION—TOLERANCES (UNLESS OTHERWISE SPECIFIED): FRACTIONS ± 1/64 DECIMALS ± .005 PUNCHED HOLES + .004 - .000

DRAWN BY	DATE	CHECKED BY	DATE	APPROVED BY	DATE	SCALE
D.M.W.	5-8-81	W.L.L.	5-14-81	J.P.R.	7/31/81	1/4

MATERIAL: SEE TABLE
 FINISH: SEE TABLE
 ASST: SEE TABLE
 MODEL: SEE TABLE

WINDO Division of DYNA TECHNOLOGY, INC. LeCenter, MN 56057

ENGINE-GENERATOR SET

D-93184