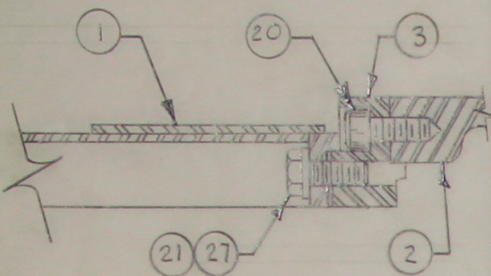
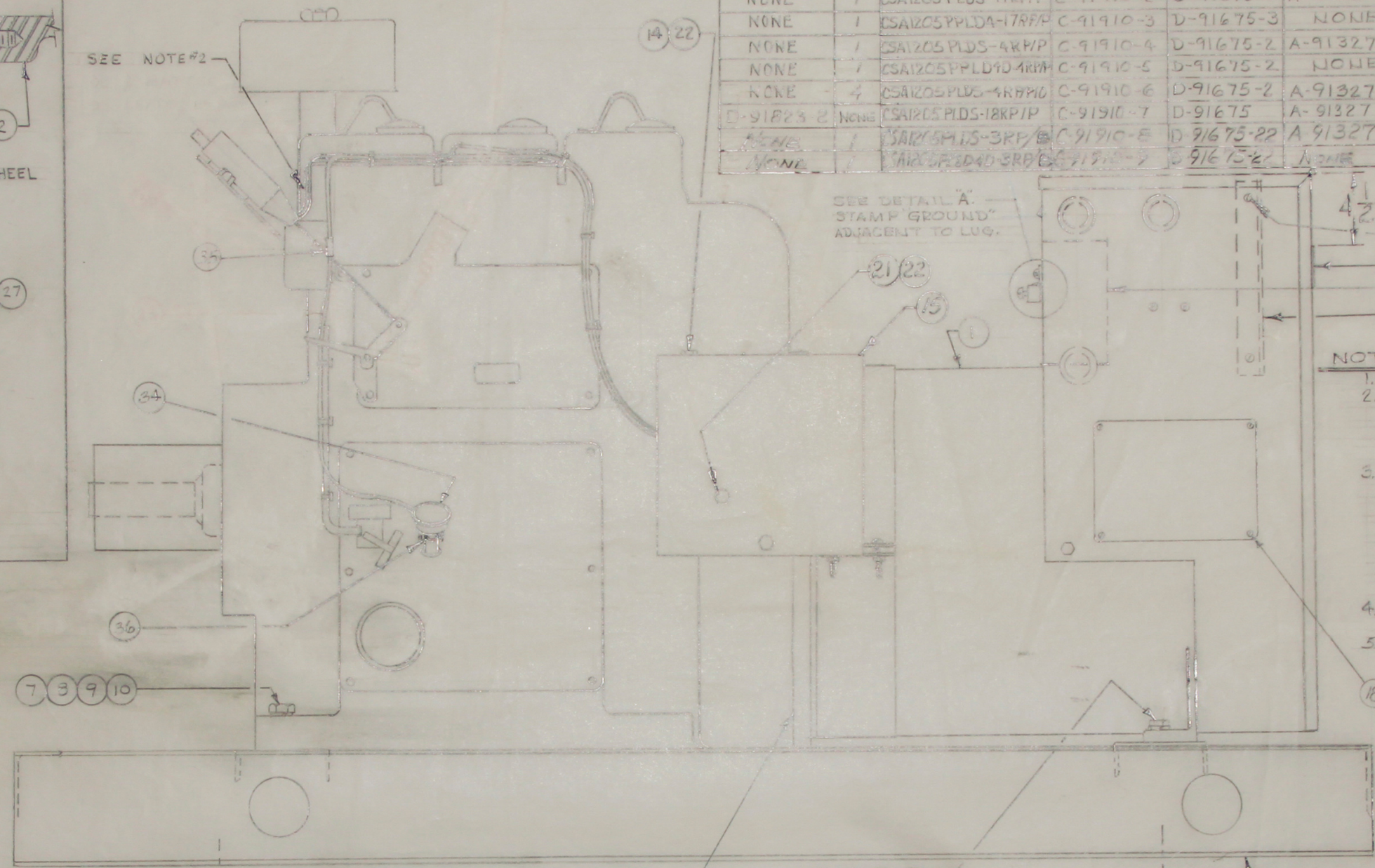


NONE	1	CSA1205PPLD3-3RPA	C-91910-1	D-91675-1	A-91327	C-92064-1	C-91968	PER ORDER	
NONE	1	CSA1205PPLD4D-3RPA	C-91910-2	D-91675-3	A-91327	C-92064-1	C-91968	FS-1	
NONE	1	CSA1205PPLD4-17RPA	C-91910-3	D-91675-3	NONE	C-92064-1	C-91968	PER ORDER	
NONE	1	CSA1205PPLD3-4RPA	C-91910-4	D-91675-2	A-91327	C-92064-1	C-91968	FS-1	
NONE	1	CSA1205PPLD4D-4RPA	C-91910-5	D-91675-2	NONE	C-92064-1	C-91968	PER ORDER	
NONE	4	CSA1205PPLD3-4RPA	C-91910-6	D-91675-2	A-91327	C-92367	C-91968-1	FS-1	
D-91823	2	NONE	CSA1205PPLD3-18RPA	C-91910-7	D-91675	A-91327	C-92064	C-91968	FS-1
NONE	1	CSA1205PPLD3-3RPA	C-91910-8	D-91675-22	A-91327	C-92064-1	C-91968	FS-1	
NONE	1	CSA1205PPLD4D-3RPA	C-91910-9	D-91675-2	NONE	C-92064-1	C-91968	PER ORDER	



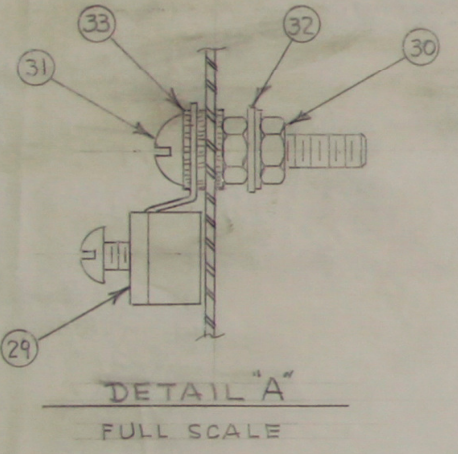
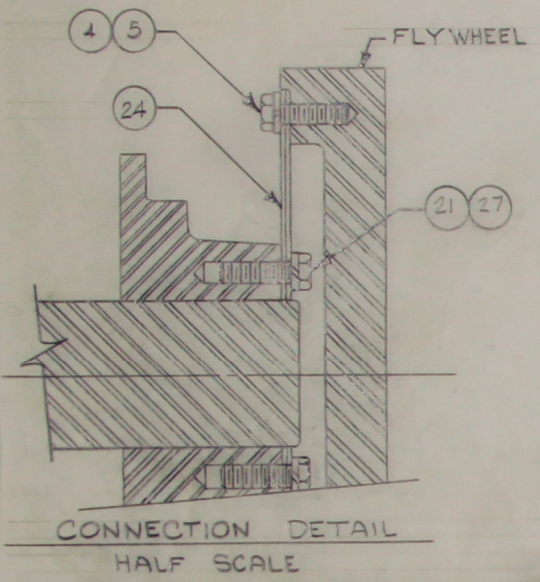
SEE NOTE #2



SEE DETAIL A.
STAMP "GROUND"
ADJACENT TO LUG.

NOTES:

- SHIP (17) AND (25) LOOSE WITH UNIT.
- ROUTE STARTER SOL. & BATTERY POSITIVE LEADS BETWEEN FUEL SOLENOID & ENGINE USING ITEM (28).
- USE NAMEPLATE B-80638-1 UNLESS:
 - PRIVATE BRAND NAMEPLATE E-91817-1 IS SPECIFIED IN ORDER OR
 - CUSTOMER NAMEPLATE SUPPLIED WITH ORDER.
- USE PERMATEX NO. 2 SEALANT ITEM (27) ON ALL FITTINGS.
- SEE C-92376 FOR OUTLINE DRAWING.



CAUTION:

THIS SPECIAL UNIT WILL ONLY OPERATE PROPERLY WHEN USED WITH AN AUTOMATIC TRANSFER SWITCH WITH #7 (LOW OIL PRESSURE SHUT DOWN) OPTION OR WITH SPECIAL REMOTE START PANEL.

SEE CONNECTION DETAIL FOR HARDWARE.

18	10809	4	SELF TAPPING SCREW		40	SEE TABLE	1	VOLTAGE REGULATOR INST.	
17	A-92154	1	SHOCK MOUNT ASS'Y.	SEE NOTE #1	39	55595	4	RD. HD. MACH. SCREW	
16	21698	4	SHT. METAL SCREW	#10 TYPE 2	38	A-91915-1	4	WELL-NUT	
15	SEE TABLE	1	CONTROL PANEL ASS'Y.		37	A-91257	PERMATEX NO. 2		
14	20604	2	WASHER		36	A-91838	1	BRASS COUPLING	SEE NOTE #4
13	SEE TABLE	1	DECAL		35	A-58077	SEE TABLE	PARALLEL CONNECTOR	
12	SEE TABLE	1	CONTROL PANEL ASS'Y.-GEN.		34	B-91689	1	OIL PRESSURE SWITCH BASE	
11	C-91772	1	BASE ASS'Y. WELDED		33	4516	4	LOCKWASHER	1/2 EXT. T.
10	A-21867	4	FLAT WASHER		32	512	1	FLAT WASHER	1/4
9	A-57580-1	2	HEX HD. CAPSCREW		31	424	1	SCREW, RD. HD. BRASS	1/20 X 1 1/2
8	636	4	LOCKWASHER - SPLIT		30	633	2	HEX NUT	1/2-20
7	1744	4	HEX NUT		29	A-48042	1	GROUND LUG	
6	A-57580	2	HEX HD. CAPSCREW		28	A-49975	AS PER 20	CABLE TIE	
5	480	5	LOCKWASHER - SPLIT		27	91658-1	18	HEX HD. CAPSCREW	
4	A-91672-2	6	HEX HD. CAPSCREW		26				
3	C-91583	1	ADAPTER RING		25	B-91831-1	1	MUFFLER, SHARK ARRESTOR	SEE NOTE #1
2	91600	1	ENGINE PER C-2474-L		24	C-91523	2	DRIVE DISK	
					23	B-52125-68	1	LEADWIRE ASS'Y.	
					22	464	3	HEX HD. CAPSCREW	
					21	481	18	LOCKWASHER - SPLIT	
					20	23597	10	FLYWHEEL HS'G CAPSCREW	

14	(12) WAS 92064 ON C-91910, 4, 2, 3, 5, 8, 9	3-30-82	D.W.	
13	ADDED - 8, - 9, 10, 11, 12	2-1-82	M.U.	
12	CAUTION NOTE ADDED NO. 5	1-21-82	D.W.	
11	ADDED (25)	12-28-81	M.U.	
10	ADDED C-91910-7 & (10) NO. 2 IN	7-21-81	D.W.	
9	ADDED NOTE #5 & (25) ITEM (2) WAS C-91831	1-2-80	LA	
8	ADDED NOTE #4, ITEM (5) & (37) ITEM (2) # C-91910-6 ADDED TO TABLE	9-25-79	M.U.	
7	DELETED (2) B-52125-68 & (2) B-52125-76, A-24-79		M.U.	
6	ITEM (5) WAS QUANT. 6, (2) WAS A-48042, (3) WAS 453, QUANT. 1 (3) WAS 1116, ADDED ITEM (2) & (3) DET. A	9-7-79	D.L.	
5	ADDED 91910-2, -3, -4, -5	7-19-75	D.L.	
4	ITEM (1) WAS A-70931-1			
4	ITEM (2) WAS 91758	6-5-79	M.U.	
3	ITEM (4) WAS 20624 & ITEM (20) WAS 20597	1-31-79	M.U.	
2	ITEM (3) WAS C-91722-B, QTY. OF ITEM (2) WAS 2, ADDED QTY. OF ITEM (2) & ADDED MATERIAL	1-18-79	M.U.	

ALL DIMENSIONS GIVEN IN INCHES—WORK TO DIMENSIONS—DO NOT SCALE—SAMPLES MUST BE APPROVED BY DYNA TECHNOLOGY ENGINEERING DEPT BEFORE PROCEEDING WITH PRODUCTION — TOLERANCES (UNLESS OTHERWISE SPECIFIED): FRACTIONS ± 1/64 DECIMALS ± .005 PUNCHED HOLES + .004 — .000

DRAWN BY	DATE	CHK'D BY	DATE	APP'D BY	DATE	SCALE
M.W.U.	12-22-78	J.R.		J.R.	1-15-79	V4=1

FINISH	SEE TABLE
ASSY	
MODEL	SEE TABLE

COMPLETE UNIT ASSEMBLY