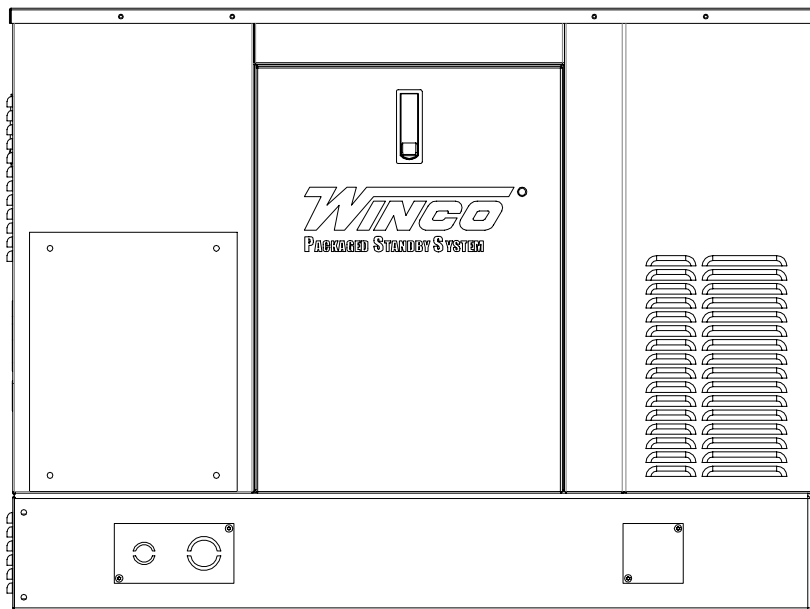




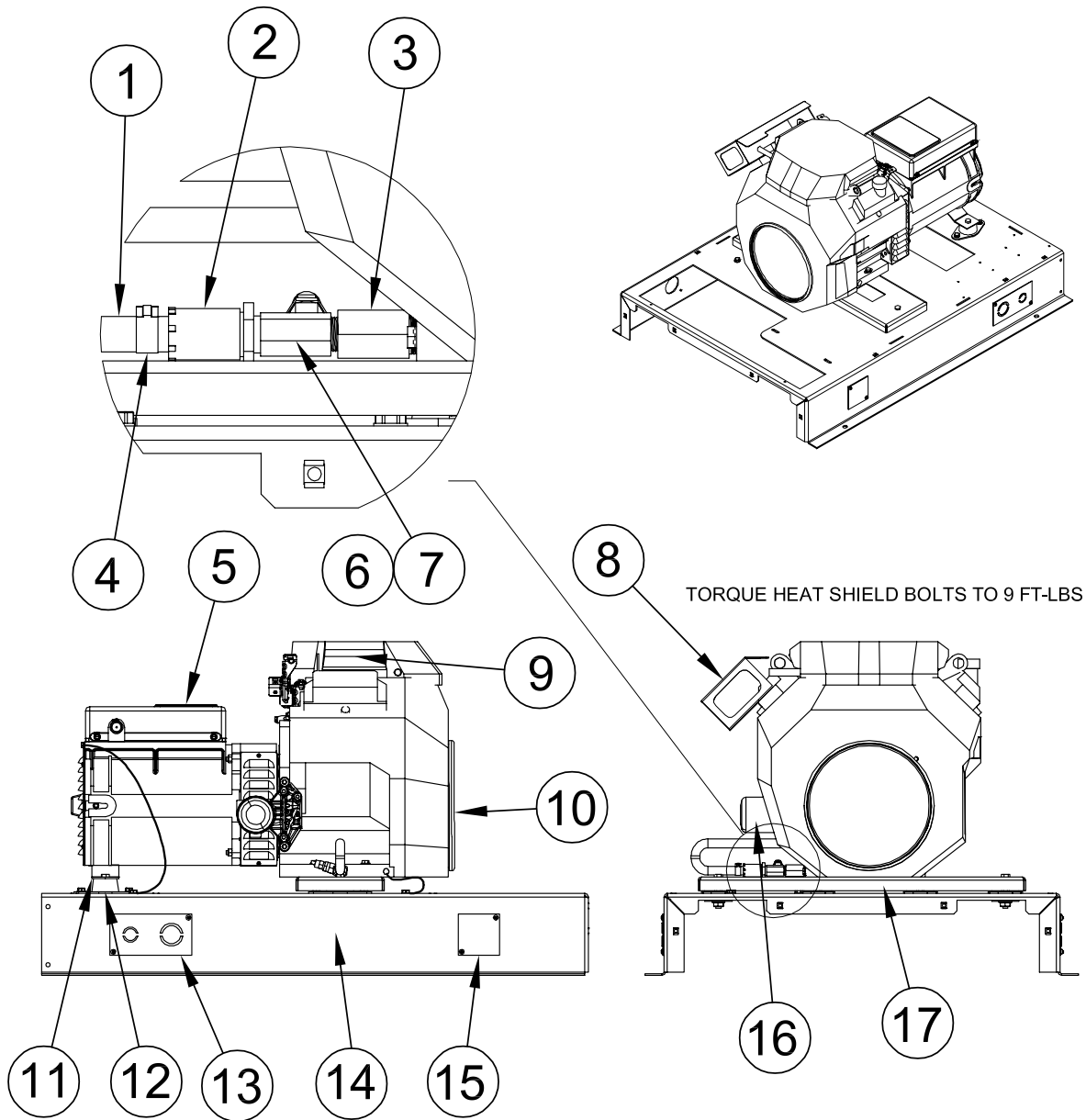
ILLUSTRATED PARTS LIST

ULPSS12H4W/E ULPSS12H2W/E



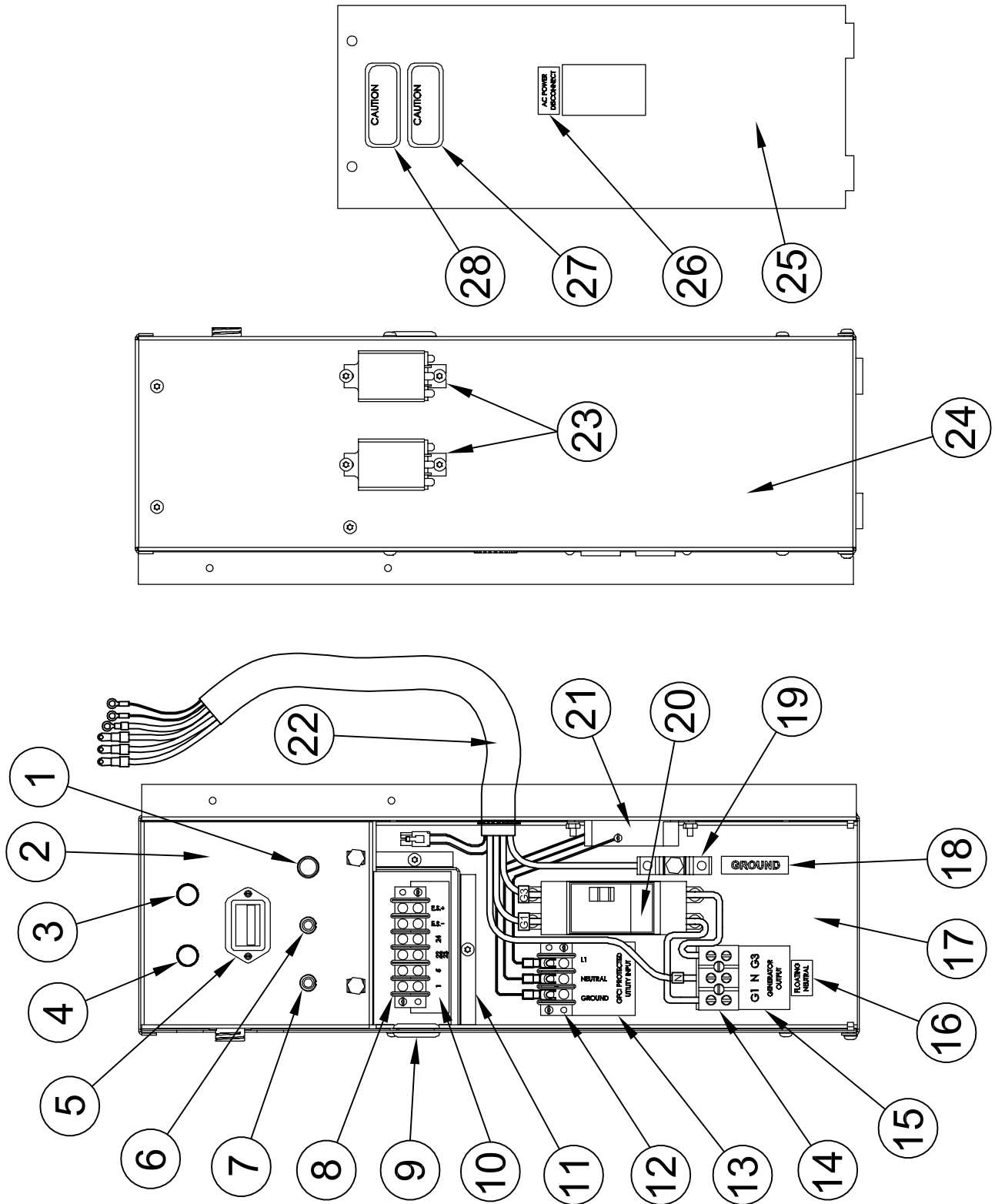
225 S. CORDOVA AVE.
LECENTER, MN 56057
507-357-6821
SERVICE DEPT.
507-357-6831
wincogen.com

ENGINE / GENERATOR ASSEMBLY



REF #	PART NUMBER	QTY	DESCRIPTION
1	62286-000	12"	Hose
2	300349	1	Oil Drain Valve
3	300349-2	1	Oil Drain Adapter
4	62999-004	1	Hose Clamp
5	351836-1	1	Generator, Mecc Alte Spa Model: S20FS-160/A
6	99967-000	1	Street Tee Fitting
7	15808-000	1	High Oil Temperature Switch
8	15687-009	1	Heat Shield
9	17210-Z6L-900	1*	Air Filter
	17218-Z6M-000	1*	Outer Air Filter
10	99780-002	1	Engine, Honda Model: GX690 VXC2 Code: GDACK
11	16430-101	1	Generator Support
12	98807-000	4	Shock Mount
13	300385-5	2	Lifting Eye Cover
14	16406-106	1	Base
15	300385-4	2	Lifting Hole Cover
16	15400-RTA-004	1*	Oil Filter
17	15636-105	1	Engine Support Tray
NI	ZFR5F-4	2**	NGK Spark Plug
*	Honda Part #		
**	NGK Part #		
NI	Not Illustrated		

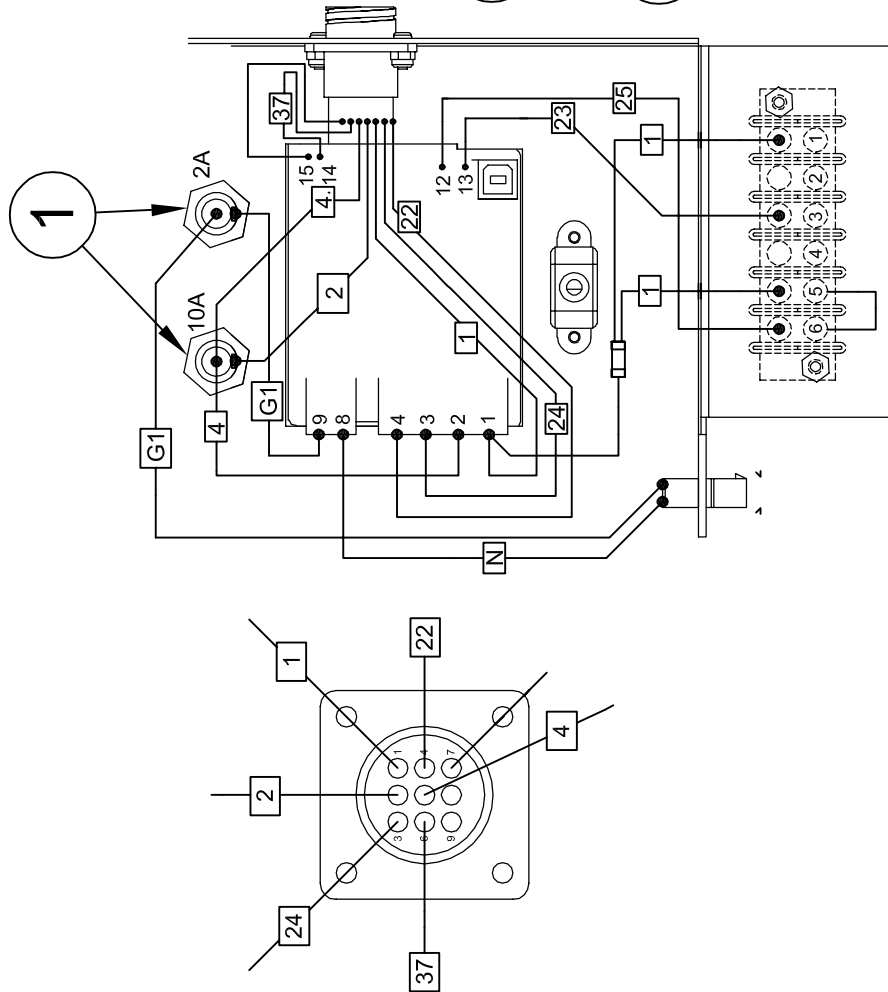
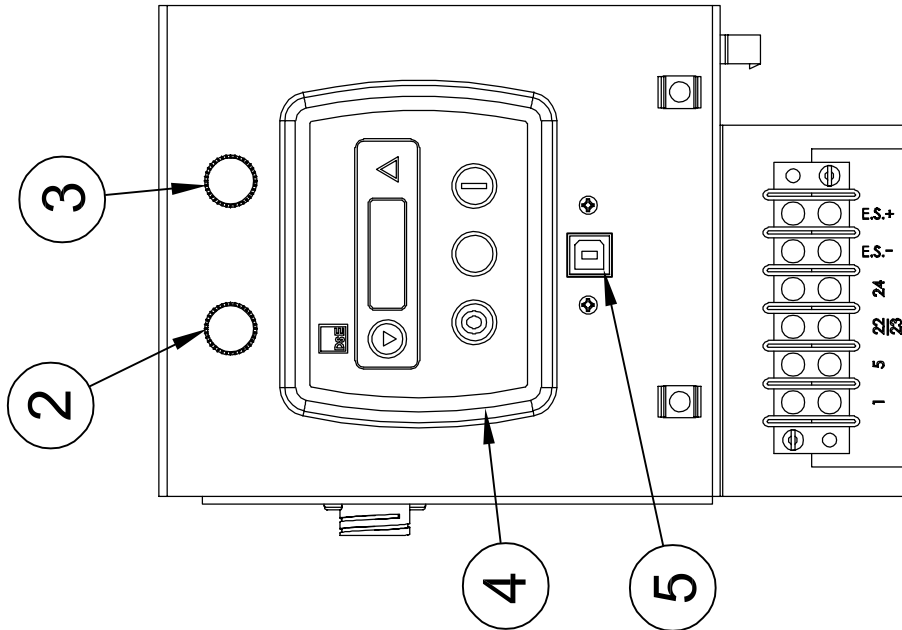
CONTROL TOWER ASSEMBLY



REF #	PART NUMBER	QTY	DESCRIPTION
1	64897-001	1	Indicator Light
2	15764-014	1	4-Wire Engine Control Assembly
3	95064-006	1	10 Amp Fuse
4	95064-008	1	2 Amp Fuse
5	58166-006	1	Running Time Meter
6	95894-001	1	Toggle Switch (on) - on - off
7	71215-002	1	Toggle Switch on - none - on
8	80623-000	1	6 Point Terminal Block
9	23917-000	1	Grommet
10	64576-018	1	Remote Start Decal
11	300309-3	1	DC Box
12	80623-005	1	3 Point Terminal Block
13	64576-006	1	GFCI Protected Decal
14	51795-000	1	3 Point Terminal Block
15	64576-005	1	Generator Output Decal
16	16501-000	1	Floating Neutral Decal
17	15666-008S	1	MLCB Panel
18	15750-001	1	Ground Decal
19	48042-000	2	Ground Lug
20	57030-000	1	50 Amp 2-Pole Circuit Breaker
21	24749-000	1	NEMA 5-15R Receptacle
22	9700-001	1	AC Lead-Wire Assembly
23	59944-002	2	SPDT Relay
24	15667-011S	1	Tower
25	15666-009S	1	MLCB Cover
26	16502-001	1	AC Power Disconnect Decal
27	16503-000	1	Copper Conductors Only Decal
28	63941-005	1	Circuit Energized Decal
NI	16287-000	1	Battery Tender
NI	15757-030	1	DC Harness
NI	21698-001	19	Torx Screws
NI	16454-001	1	Trans. Voltage Suppressor
NI	2489-001	2	Fuse Holder
NI	Not Illustrated		

NOTE: 2-Wire Engine Control Assembly: 15764-015 This is used if the gen-set
Is converted to a 2-wire start generator.

2-WIRE CONTROLLER ASSEMBLY (15764-015)



DESCRIPTION

- Fuse Holder
- 10 Amp Fuse
- 2 Amp Fuse
- DSE 3110 Controller
- USB Cable
- Remote Start Decal

QTY

- 2
- 1
- 1
- 1
- 1
- 1

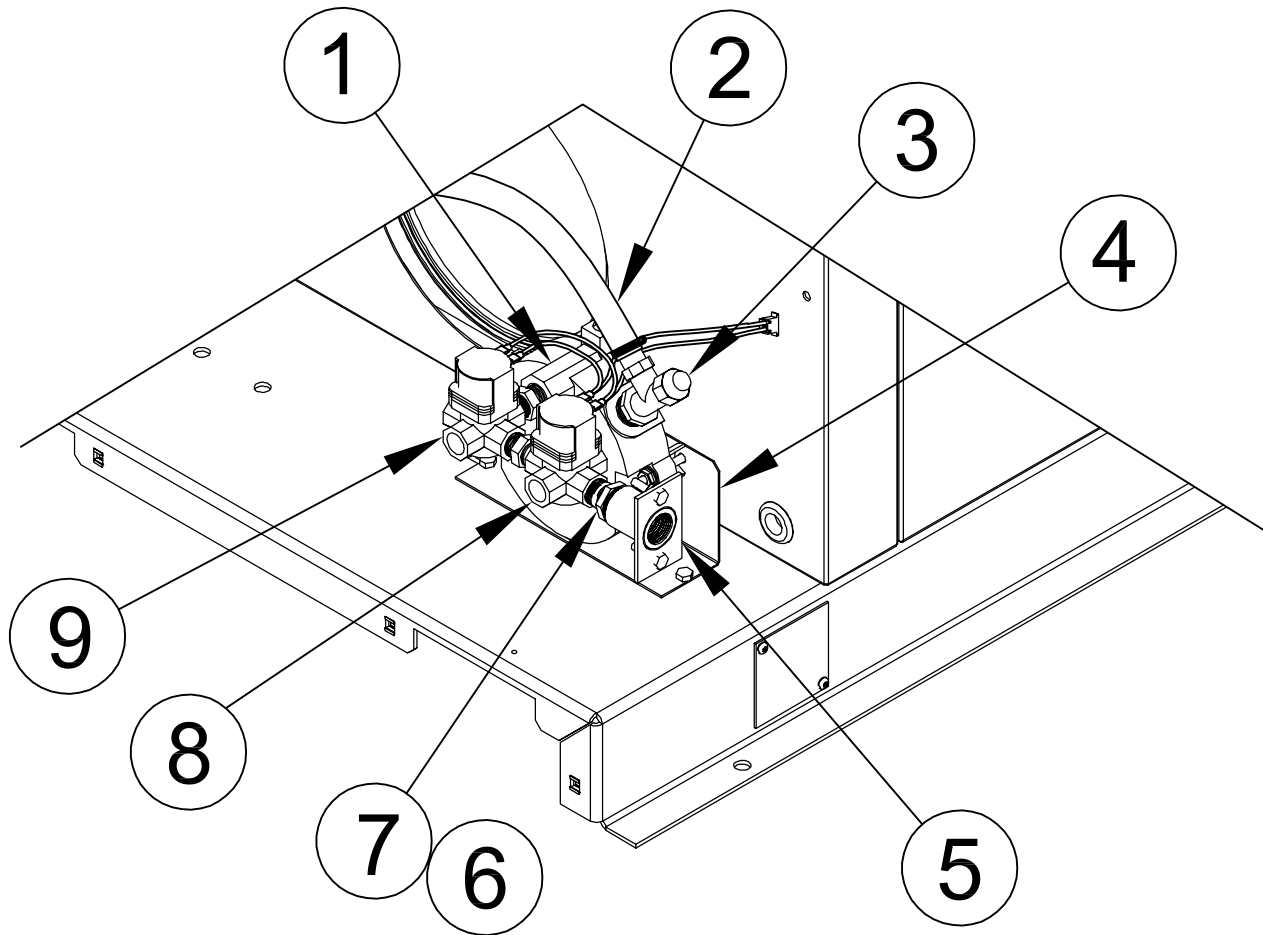
PART NUMBER

- 2489-001
- 95064-006
- 95064-008
- 351112-5
- 92844-005
- 64576-018
- Not Illustrated

REF

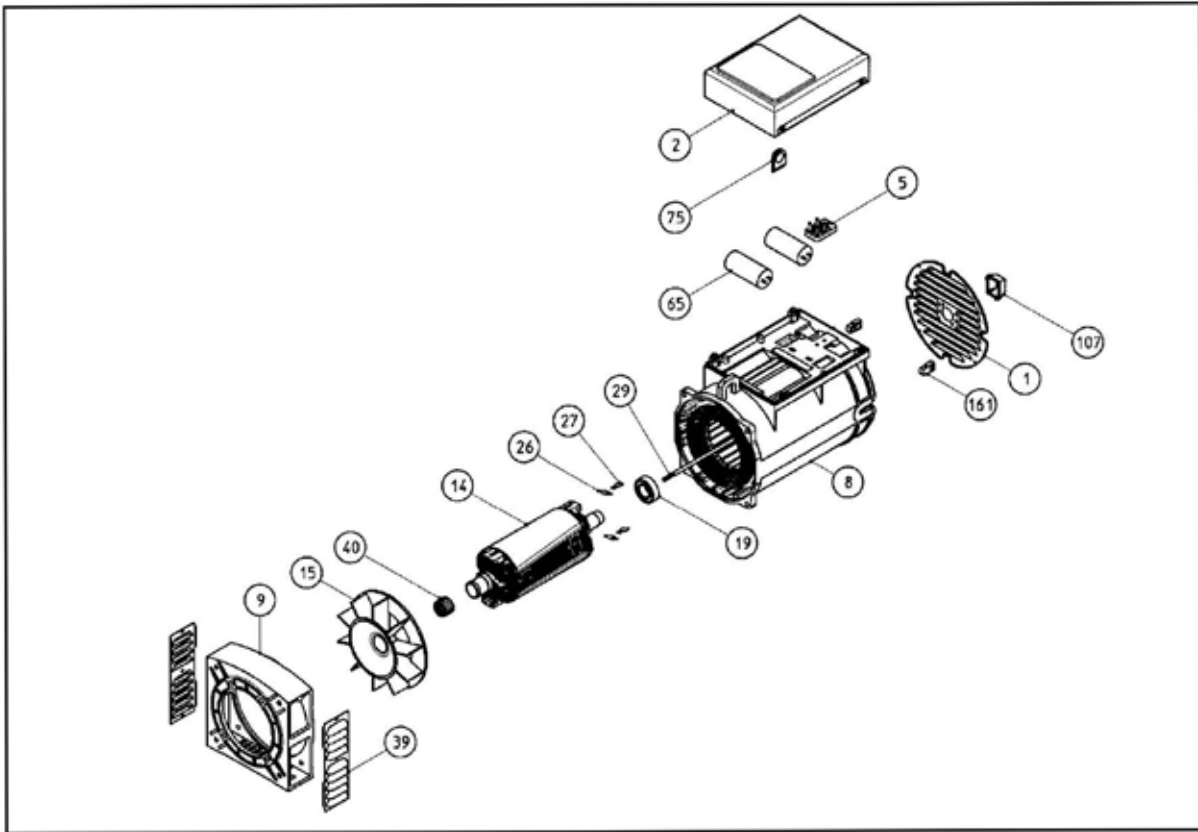
- 1
- 2
- 3
- 4
- 5
- NI
- NI

VAPOR FUEL SYSTEM ASSEMBLY



REF #	PART NUMBER	QTY	DESCRIPTION
1	16331-407	1	Demand Regulator
2	AH1-30634	40" *	½" Fuel Hose with Fitting
3	F4-30637	1*	Tee Fitting
4	99084-000	1	Mounting Bracket
5	99085-013	1	Fuel Inlet Weldment
6	81075-000	1	¾" to ½" Reducer
7	21089-000	1	½" Pipe Nipple
8	16331-402	1	Straight Fuel Solenoid
9	16331-403	1	90° Fuel Solenoid
NI	F4-30633	2*	½" Hex Nipple
NI	J1-30655-021	1*	Orifice Insert 5.9 mm NG
NI	J1-30655-004	1*	Orifice Insert 5.1 mm LP
NI	C2-30035	1*	Cap Nut
NI	Not Illustrated		
*	Impco part number		

GENERATOR END ASSEMBLY

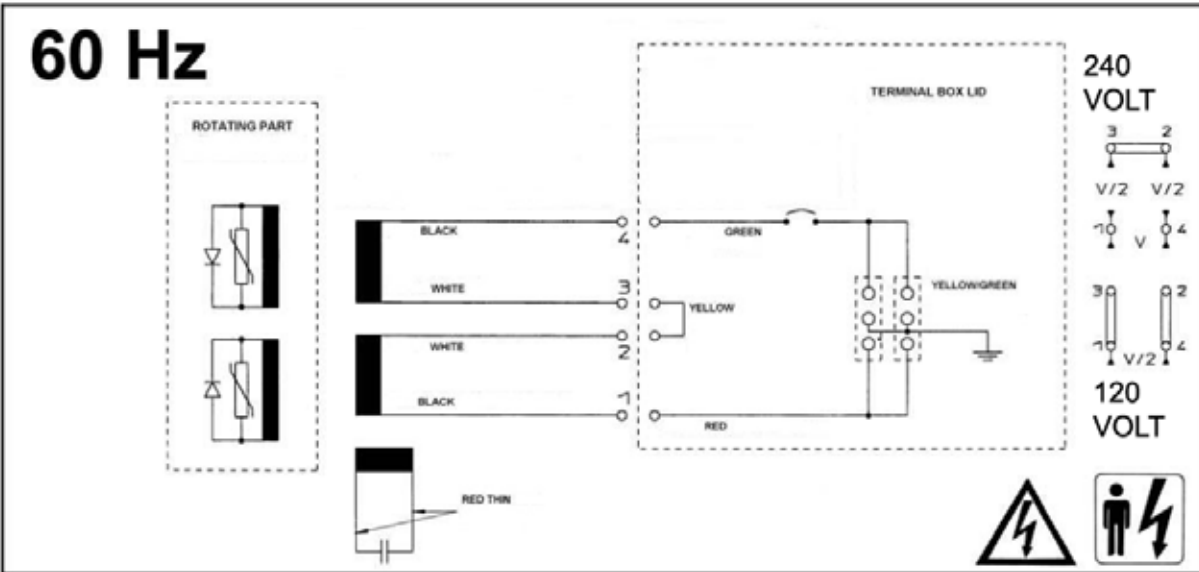


REF #	PART NUMBER	QTY	DESCRIPTION
	351836-1	1	Complete Generator End
19	54665-000	1	6205-2RS Bearing
26	300323-208	2	Varistor
27	300323-207	2	Diode
65	300323-112	2	31.5 mf 450 VAC Capacitor

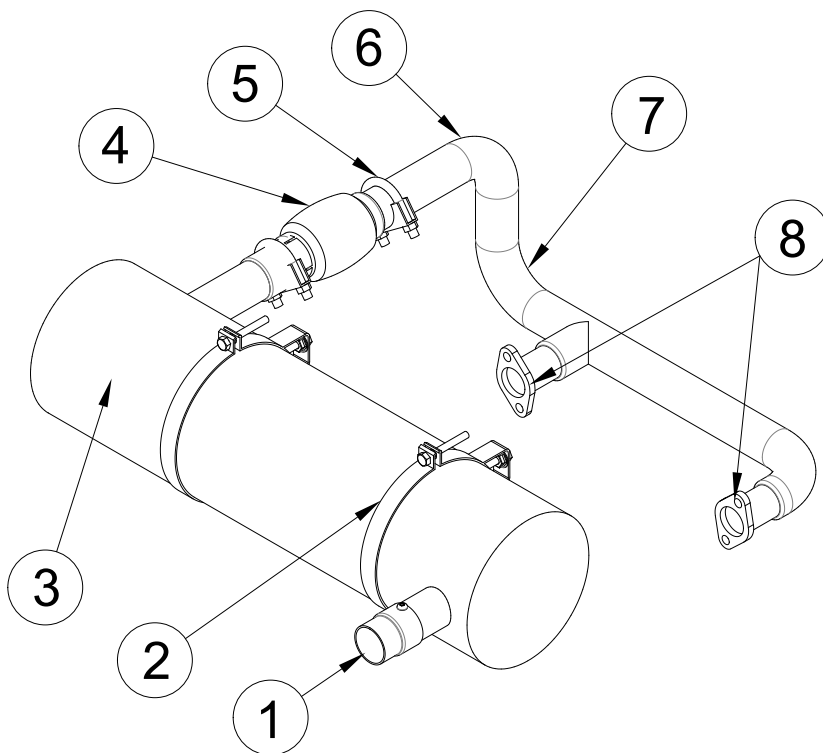
GENERATOR SPECIFICATIONS:

STATOR:	0.209 Ohms
ROTOR:	6.57 Ohms
CAPACITOR LEADS	0.60 Ohms

GENERATOR END SCHEMATIC



EXHAUST ASSEMBLY

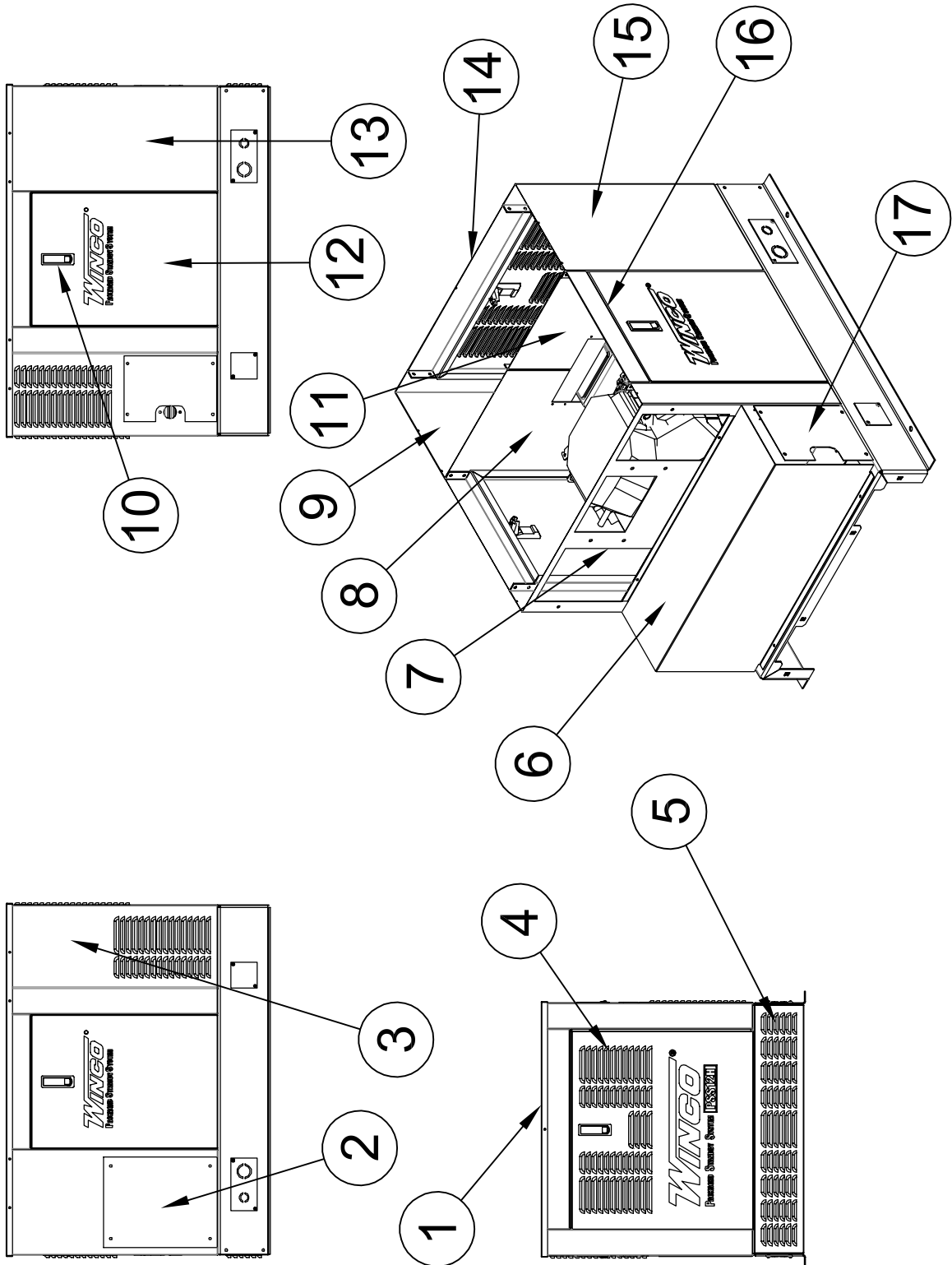


REF #	PART NUMBER	QTY	DESCRIPTION
1	16237-001	1	Spark Arrestor
2	350264-2	2	Muffler Bracket
3	350590-9	1	Muffler
4	16246-001	1	Exhaust Flex
5	93489-015	2	Exhaust Clamp
6	97274-000	11 FT	High Temperature Tape
7	16247-002	1	Exhaust Manifold
8	16247-002G	2	Exhaust Manifold Gasket

DECALS

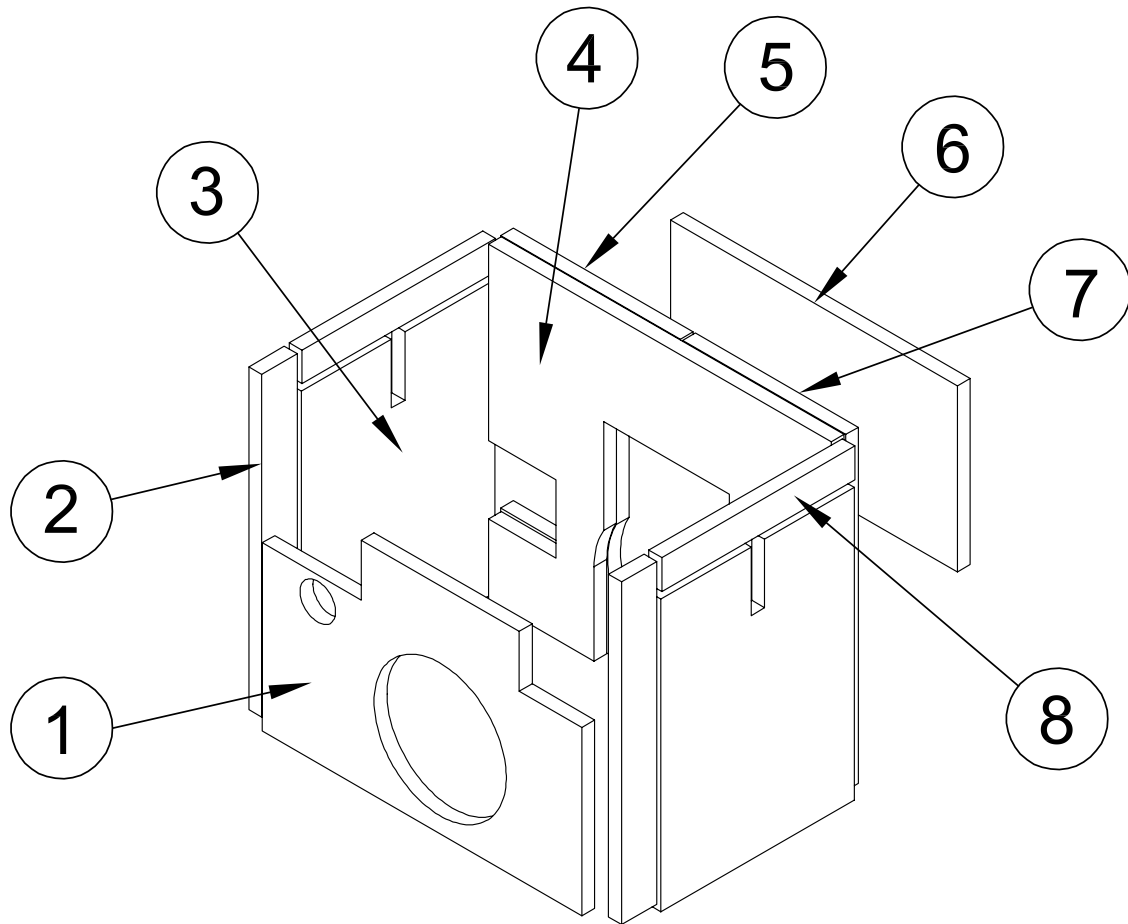
PART NUMBER	QTY	DESCRIPTION
15209-000	1	Decal Set
15209-100	1	Decal Set French
63941-001	3	Hot Surface Decal
63941-003	1	Battery Compartment Decal
63941-004	1	Fuse Warning Decal
97813-000	2	Auto Start Warning Decal
15849-000	1	CSA Standby Decal
64891-001	1	Electrical Code Decal
15210-010	1	UL Fuel System Decal
15209-004	1	Aluminum Inlet Decal

HOUSING ASSEMBLY



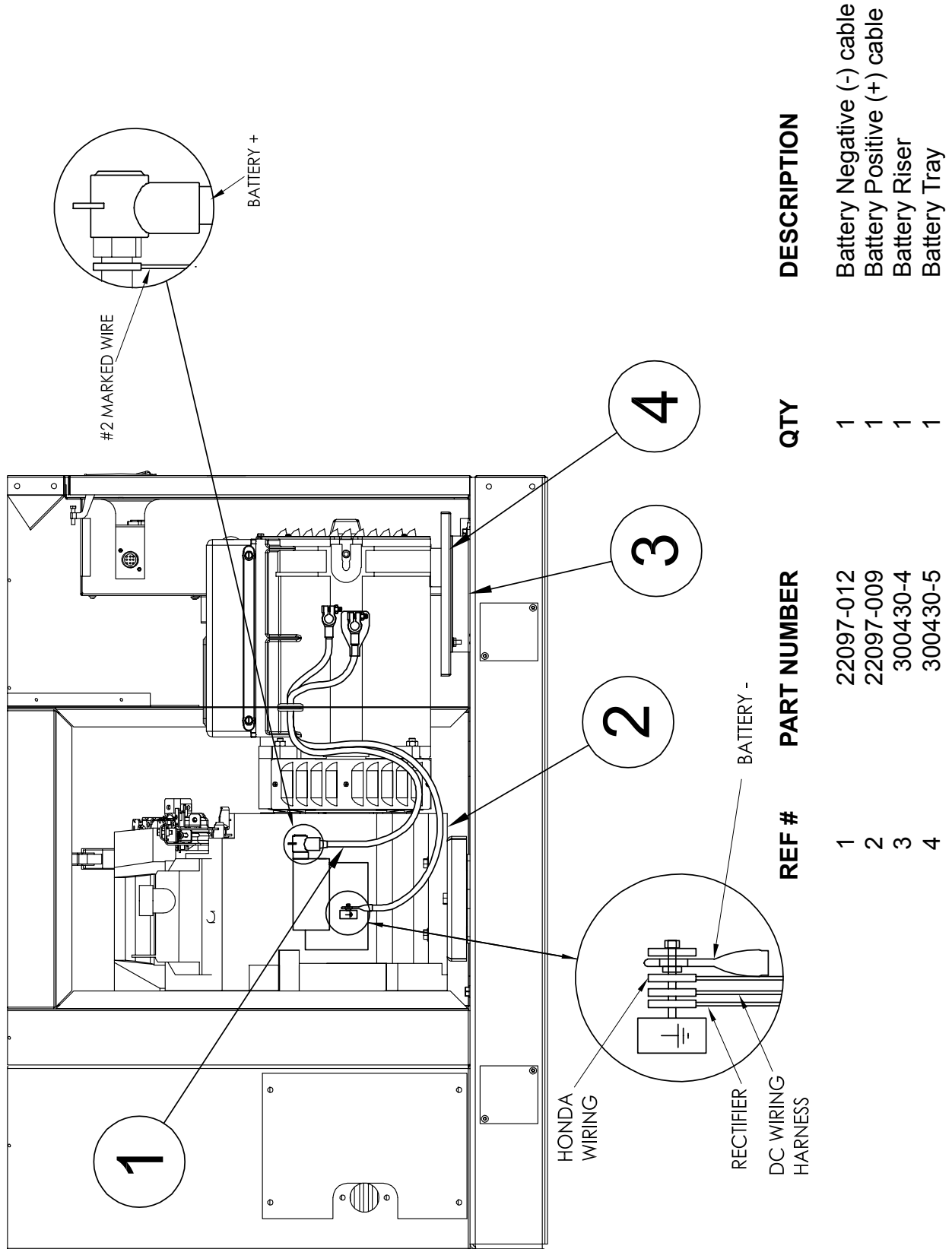
REF #	PART NUMBER	QTY	DESCRIPTION
1	16422-005S	1	Roof
2	16414-009S	1	Access Cover
3	16414-007S	1	Front
4	16360-032S	1	Rear Door
5	15671-011S	1	Back Bottom
6	16473-007S	1	Engine Air Partition
7	16473-008	1	Front Divider
8	16417-005S	1	Right Generator Partition
9	16464-005S	1	Back Right Corner
10	95229-005	3	Door Latch
11	16416-005S	1	Left Generator Partition
12	16360-033S	2	Side Service Panel (door)
13	16464-005S	1	Back Left Corner
14	15681-024S	1	Rear Sill
15	16464-006S	1	Back Left Corner
16	15681-022S	2	Side Sill
17	16414-008S	1	Regulator Access
NI	23917-000	3	Grommet
NI	62486-000	2	Grommet
NI	21698-001	26	Torx Screw
NI	15287-001	2	Air Seal 15.5"
NI	15287-018	1	Air Seal 8.25"
NI	Not Illustrated		

FOAM PIECES



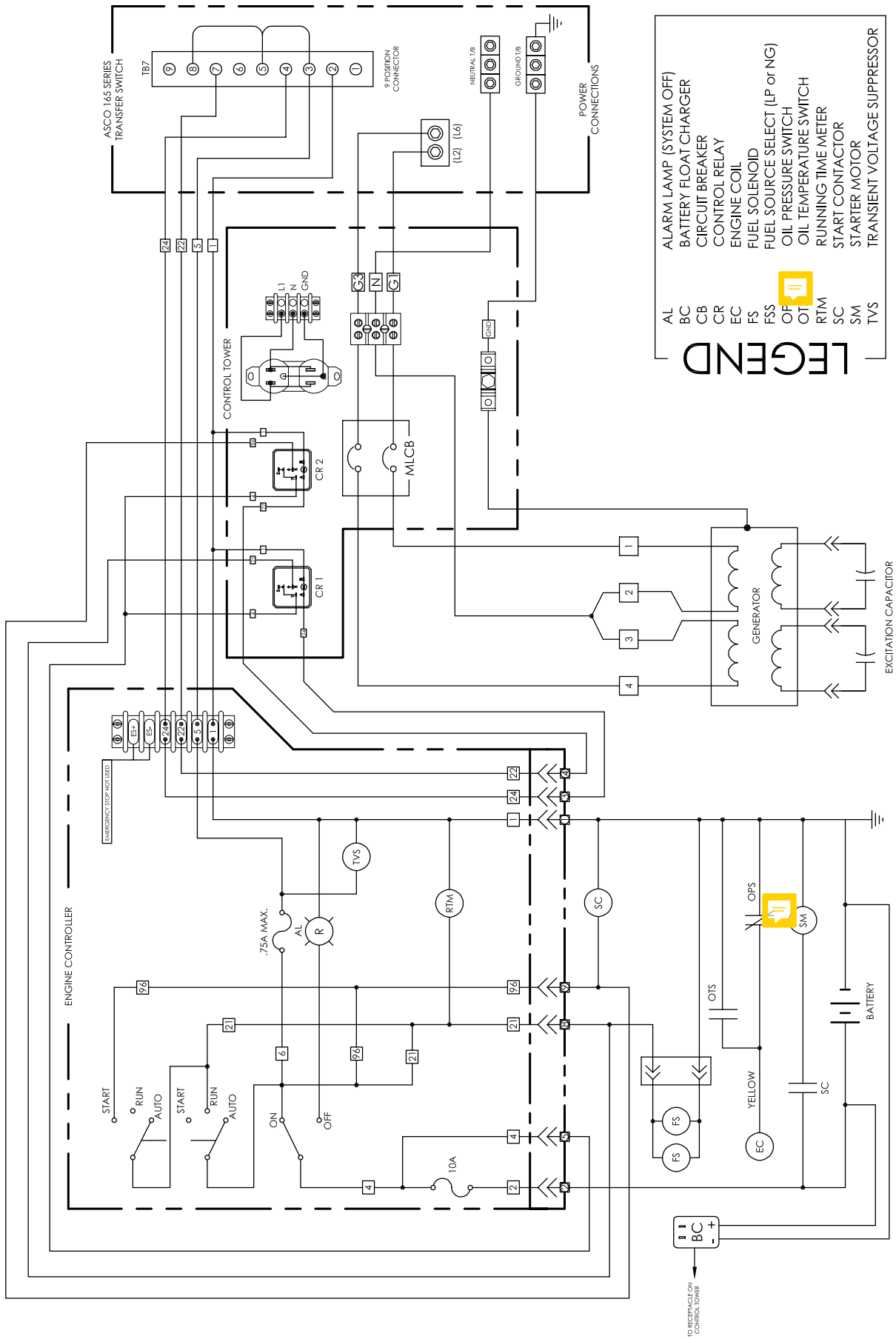
REF #	PART NUMBER	QTY	DESCRIPTION
1	16485-040S	1	Front Divider Foam
2	16485-045S	2	Corner Foam
3	16485-039S	2	Service Panel Foam
4	16485-044S	1	Generator Partition Foam
5	16485-043S	1	Right Divider Foam
6	16485-046S	1	Rear Door Foam
7	16485-042S	1	Left Divider Foam
8	16485-041S	2	Side Sill Foam
NI	16485-047S	1	Roof Foam
NI	97291-003S	1	Reflective Roof Foam
NI	97291-007S	1	Side Panel Reflective Foam
NI	97291-001S	1	Air Partition Reflective Foam
NI	97291-002S	1	Engine Divider Reflective Foam
NI	Not Illustrated		

BATTERY ASSEMBLY

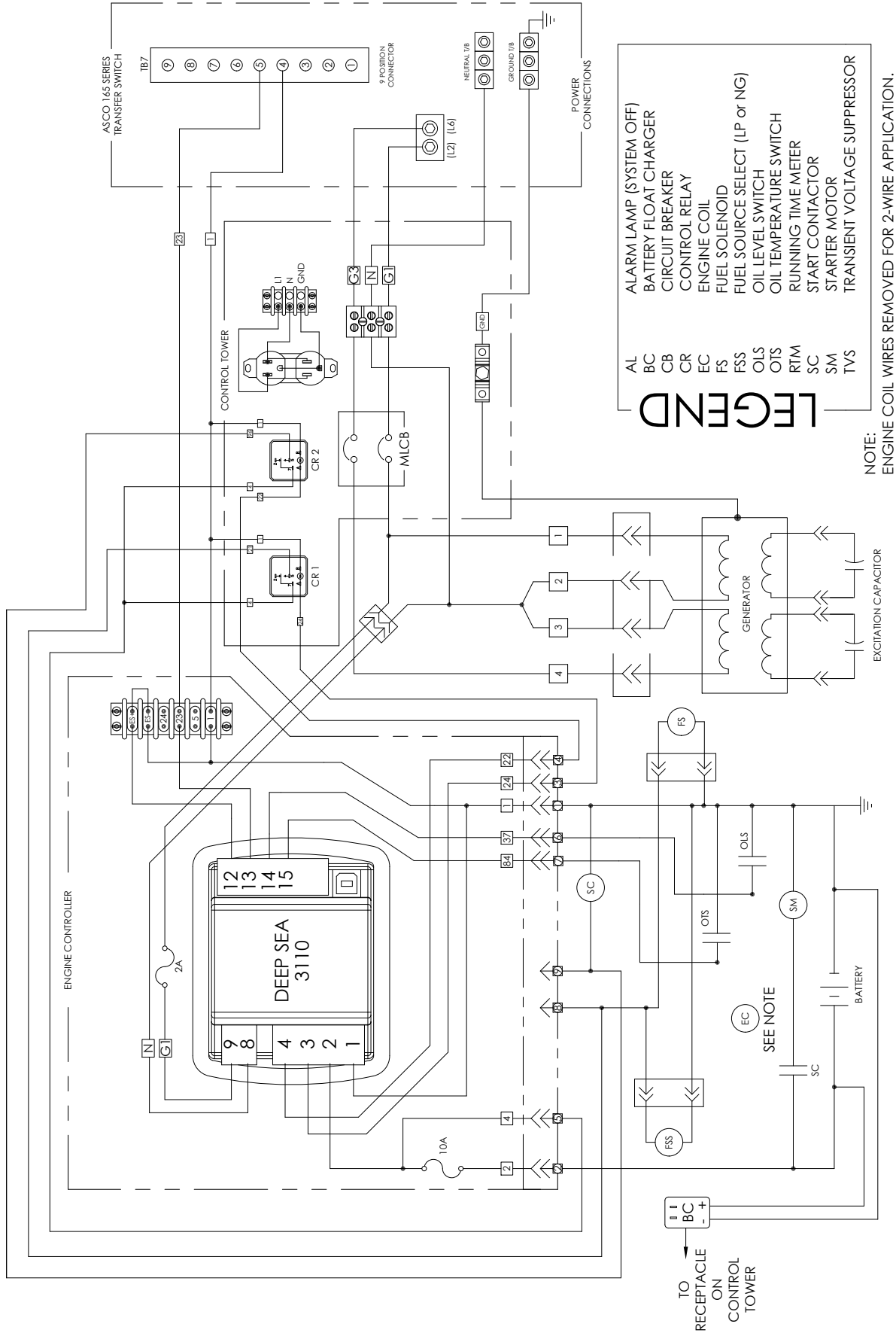


REF #	PART NUMBER	QTY	DESCRIPTION
1	22097-012	1	Battery Negative (-) cable
2	22097-009	1	Battery Positive (+) cable
3	300430-4	1	Battery Riser
4	300430-5	1	Battery Tray

4-WIRE START AC AND DC GENERATOR SCHEMATIC



2-WIRE START AC AND DC GENERATOR SCHEMATIC



LEGEND

- AL ALARM LAMP (SYSTEM OFF)
- BC BATTERY FLOAT CHARGER
- CB CIRCUIT BREAKER
- CR CONTROL RELAY
- EC ENGINE COIL
- FS FUEL SOLENOID
- FSS FUEL SOURCE SELECT (LP or NG)
- OLS OIL LEVEL SWITCH
- OTS OIL TEMPERATURE SWITCH
- RTM RUNNING TIME METER
- SC START CONTACTOR
- SM STARTER MOTOR
- TVS TRANSIENT VOLTAGE SUPPRESSOR

NOTE:
ENGINE COIL WIRES REMOVED FOR 2-WIRE APPLICATION.