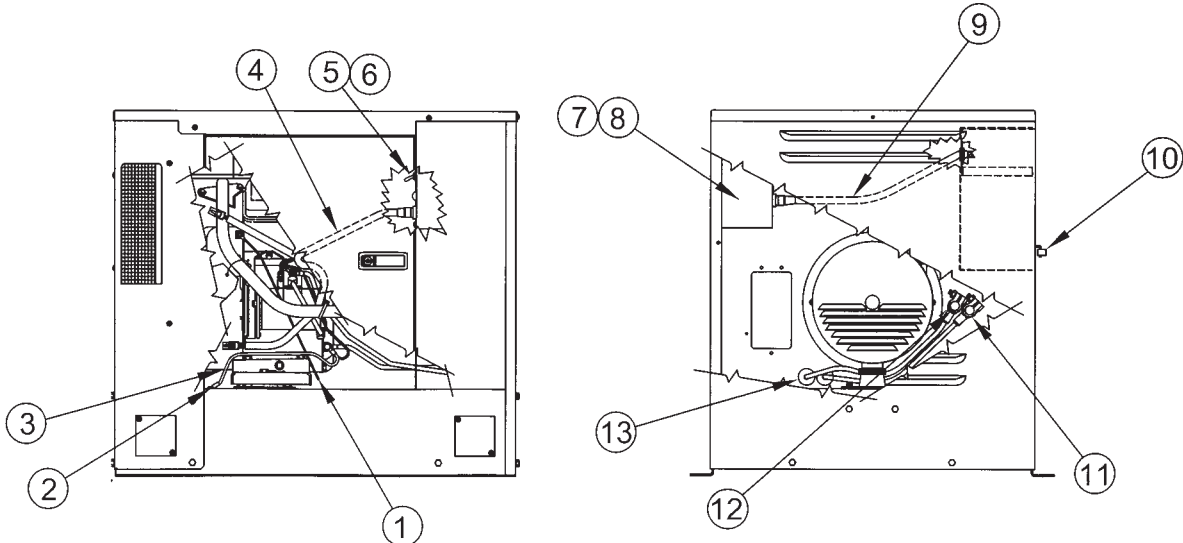


## ILLUSTRATED PARTS LISTS

## PSS8B4W/C PSS8B2W/C

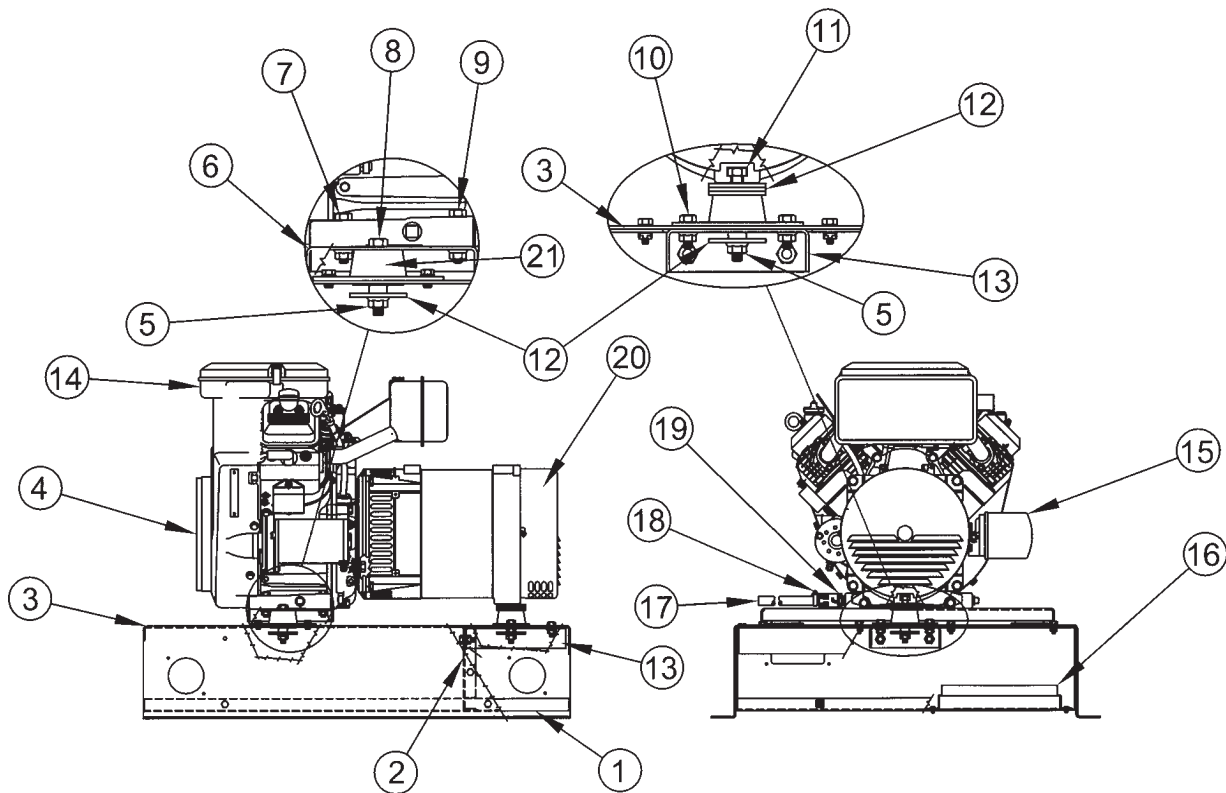
### DC CONNECTIONS AND CONTROLS



REF#	PART NUMBER	QTY	DESCRIPTION
1	52131-022	1	Lead Wire, Oil Pressure Switch
2	21698-001	3	# 10 X 3/8 Self Tapping Screw
3	64903-001	1	Engine Ground Wire
4	15757-016	1	Engine Harness
5	71215-002	1	Toggle Switch, (4-wire control)
5a	71216-001	1	Toggle Switch, (2-wire control)
6	95894-001	1	Toggle Switch, (4-wire control)
7	15764-408	1	Engine Control Module, 4 Wire
8	15764-407	1*	Engine Control Module, 2 Wire
9	15757-018	1	Remote Harness
10	48042-000	1	Ground Lug
11	22097-005	1	Positive Battery Cable
12	22097-000	1	Negative Battery Cable
13	23917-002	2	Grommet

\*Optional with two wire start controller

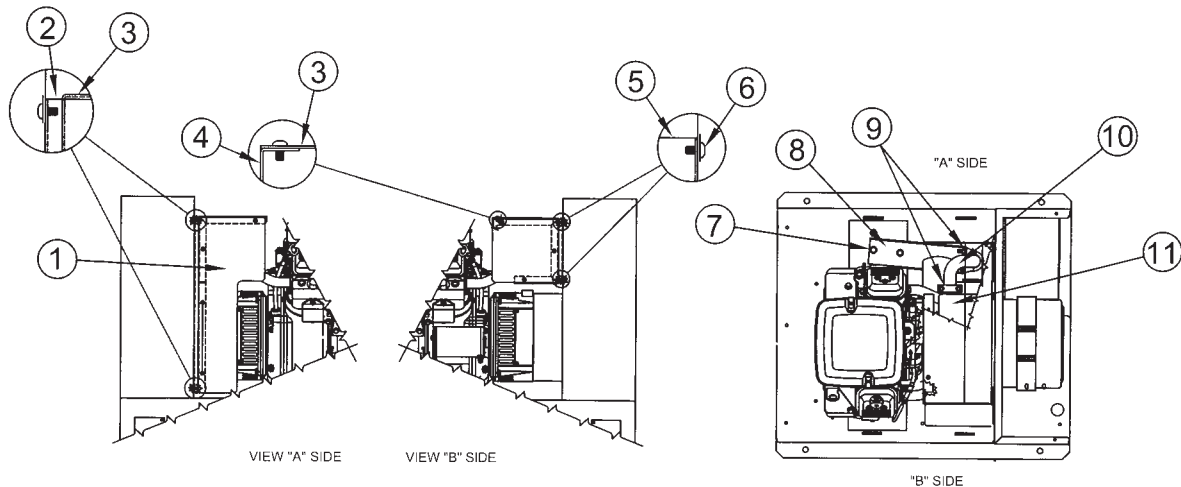
# ENGINE GENERATOR ASSEMBLY



<u>REF #</u>	<u>PART NUMBER</u>	<u>QTY</u>	<u>DESCRIPTION</u>
1	15637-404	1	Base Channel
2	16344-001	1	Generator Support
3	16341-403	1	Base
4	16435-004	1	Engine, Briggs and Stratton Model 304447-0322-E1
5	16250-000	3	3/8-16 Hex Flange Nut
6	15636-403	1	Engine Support Channel
7	468-000	2	5/16-18 X 1-1/2 Hex Head Bolt
8	91658-006	2	3/8-16 X 2-1/4 Hex Head Bolt
9	9416-000	2	5/16-18 X 1-3/4 Hex Head Bolt
10	467-000	6	5/16-18 X 3/4 Hex Head Bolt
11	91658-008	1	3/8-16 X 2-3/4 Hex Head Bolt
12	98806-000	6	3/8" I.D. X 2" O.D. Flat Washer
13	16345-401	1	Generator Support Extension
14	B&S 841194	1	Air Filter

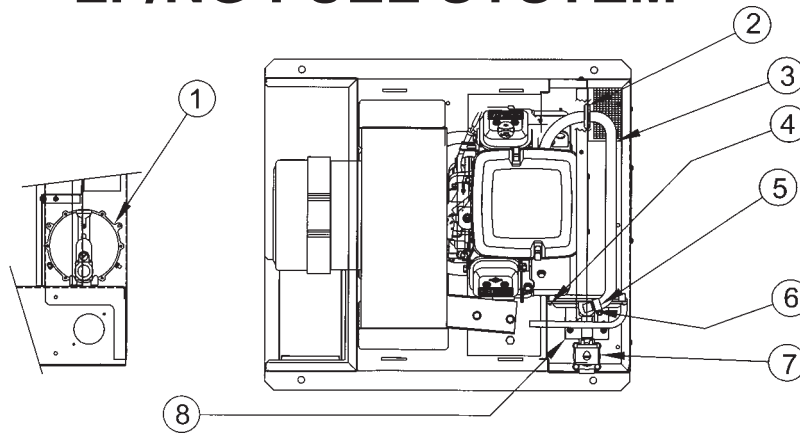
<u>REF #</u>	<u>PART NUMBER</u>	<u>QTY</u>	<u>DESCRIPTION</u>
15	B&S 842921	1	Oil Filter
16	16358-402	1	Battery Tray
17	62286-000	1 FT	Hose
18	62999-004	1	Hose Clamp
19	300349	1	Oil Drain Valve
20	16346-004	1	Generator, Mecc Alt Spa Model S20W-130/A
21	98807-000	3	Shock Mount
NI	16346-312	1	40MFD 425VAC Capacitor
NI	B&S 491055s	2	Spark Plugs

## MUFFLER & EXHAUST SYSTEM



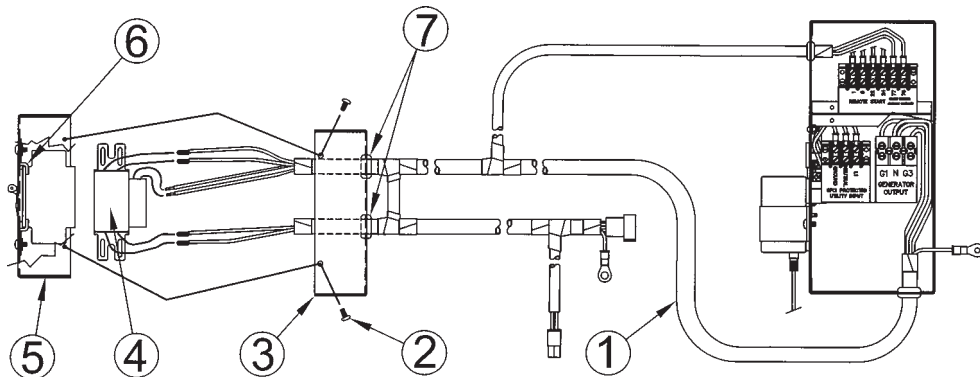
<u>REF#</u>	<u>PART NUMBER</u>	<u>QTY</u>	<u>DESCRIPTION</u>
1	16356-400	1	Heat Shield
2	16381-401	1	Right Heat Shield Support
3	16356-401	1	Muffler Heat Shield
4	16382-401	1	Engine Heat Shield
5	16381-402	1	Left Heat Shield Support
6	21698-001	14	#10 X 3/8 Self Tapping Screw
7	62173-001	2	5/16-1 x 1/2 Self Tapping Screw
8	16351-401	1	Tail Pipe Support
9	93489-014	2	1-1/8" Exhaust Clamp
10	16339-000	1	Exhaust Pipe
11	16401-000	1	Muffler
	B&S Part # 807965		
NI	15769-002	1	Spark Arrestor
	(attach to item 10 with item 6)		

# LP/NG FUEL SYSTEM



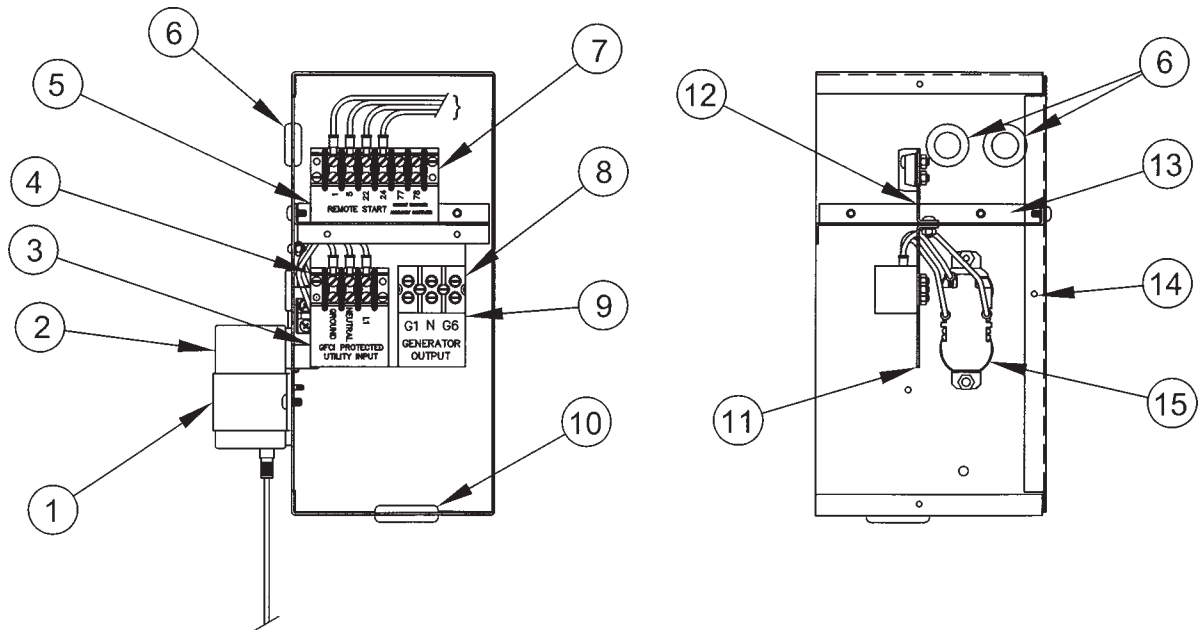
<u>REF#</u>	<u>PART NUMBER</u>	<u>QTY</u>	<u>DESCRIPTION</u>
1	55559-002	1	Regulator
2	16302-000	1	Grommet
3	23048-005	1	Hose (28.0")
4	16497-000	1	Fuel Inlet Box Panel
5	81018-008	2	Hose Clamp
6	92382-004	1	3/8 X 1/2 Brass Hose Fitting
7	42942-000	1	Fuel Solenoid
8	16496-000	1	Fuel Solenoid Mounting Plate

# AC WIRING HARNESS & CIRCUIT BREAKER



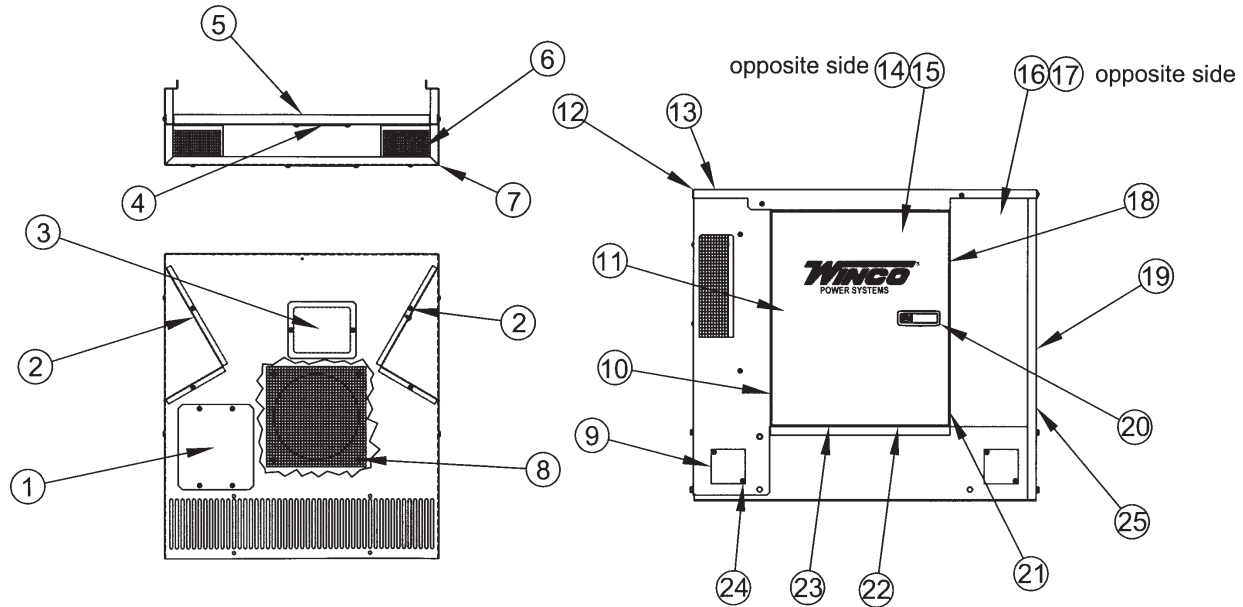
<u>REF #</u>	<u>PART NUMBER</u>	<u>QTY</u>	<u>DESCRIPTION</u>
1	15757-013	1	AC Wiring Harness
2	21698-001	8	#10 X 3/8 Self Tapping Screw
3	99876-401	1	Circuit Breaker Box Cover
4	64898-001	1	Circuit Breaker 30A 240V
5	99876-400	1	Circuit Breaker Box
6	64045-012	2	Retaining Strap
7	16302-000	2	7/8 ID X 1.25 OD Grommet

# CUSTOMER CONNECTION BOX



<u>REF #</u>	<u>PART NUMBER</u>	<u>QTY</u>	<u>DESCRIPTION</u>
1	300308-410	1	Hold Down Strap
2	16287-000	1	Battery Tender
3	64576-006	1	Utility Connection Decal
4	80623-005	1	3 Point Terminal Block
5	64576-004	1	Remote Connection Decal
6	23917-000	2	Grommet
7	80623-000	1	6 Point Terminal Block
8	51795-000	1	3 Point Terminal Block
9	64576-005	1	AC Output Power Decal
10	62486-000	1	Grommet
11	16319-402	1	Terminal Block Mounting Bracket
12	16319-401	1	Terminal Block Mounting Bracket
13	300309-402	1	Electrical Box Divider
14	300278-413	1	Electrical Connection Box
15	24749-000	1	Duplex Receptacle 15 Amp
NI	300310-402	1	Connection Box Cover

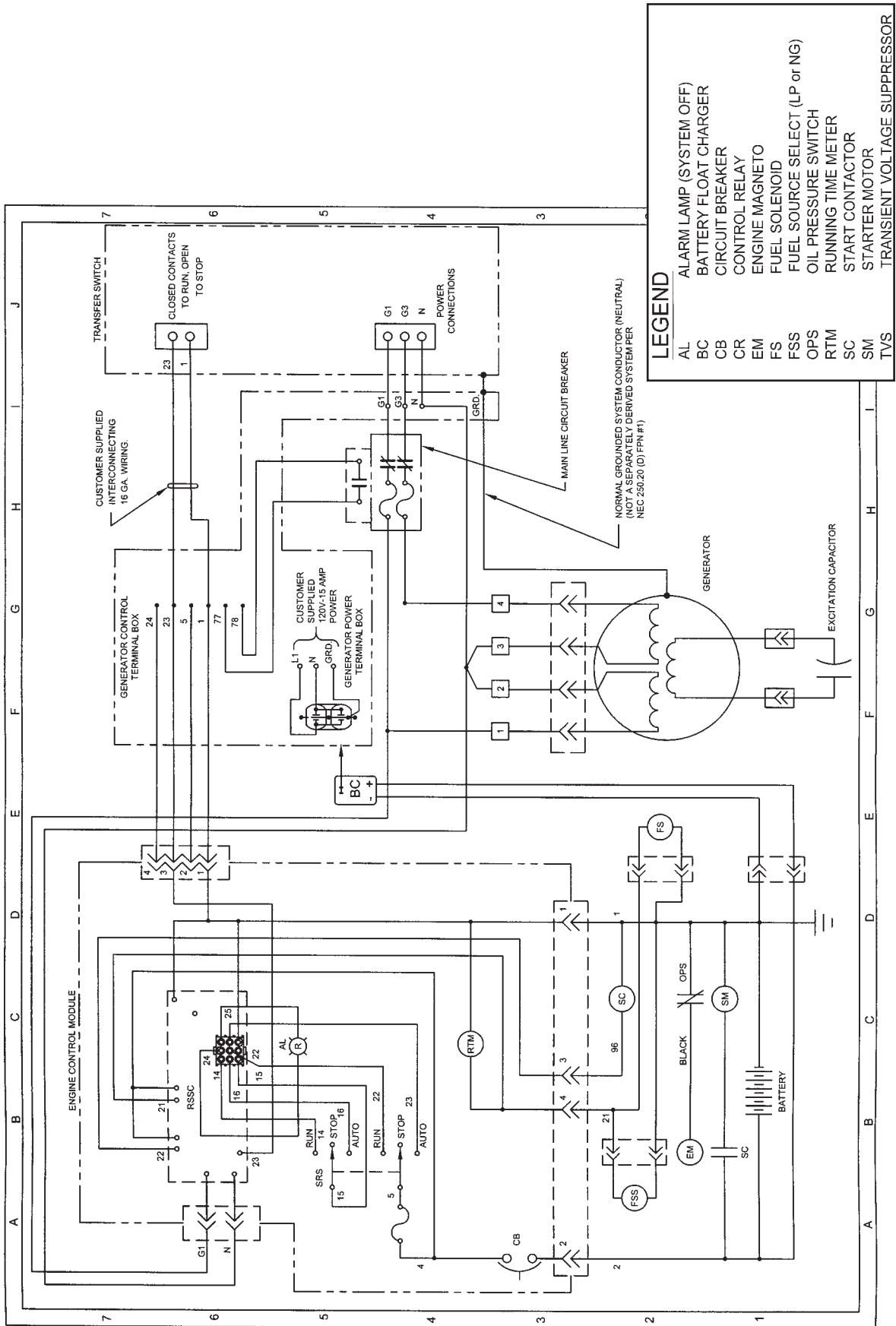
# HOUSING ASSEMBLY



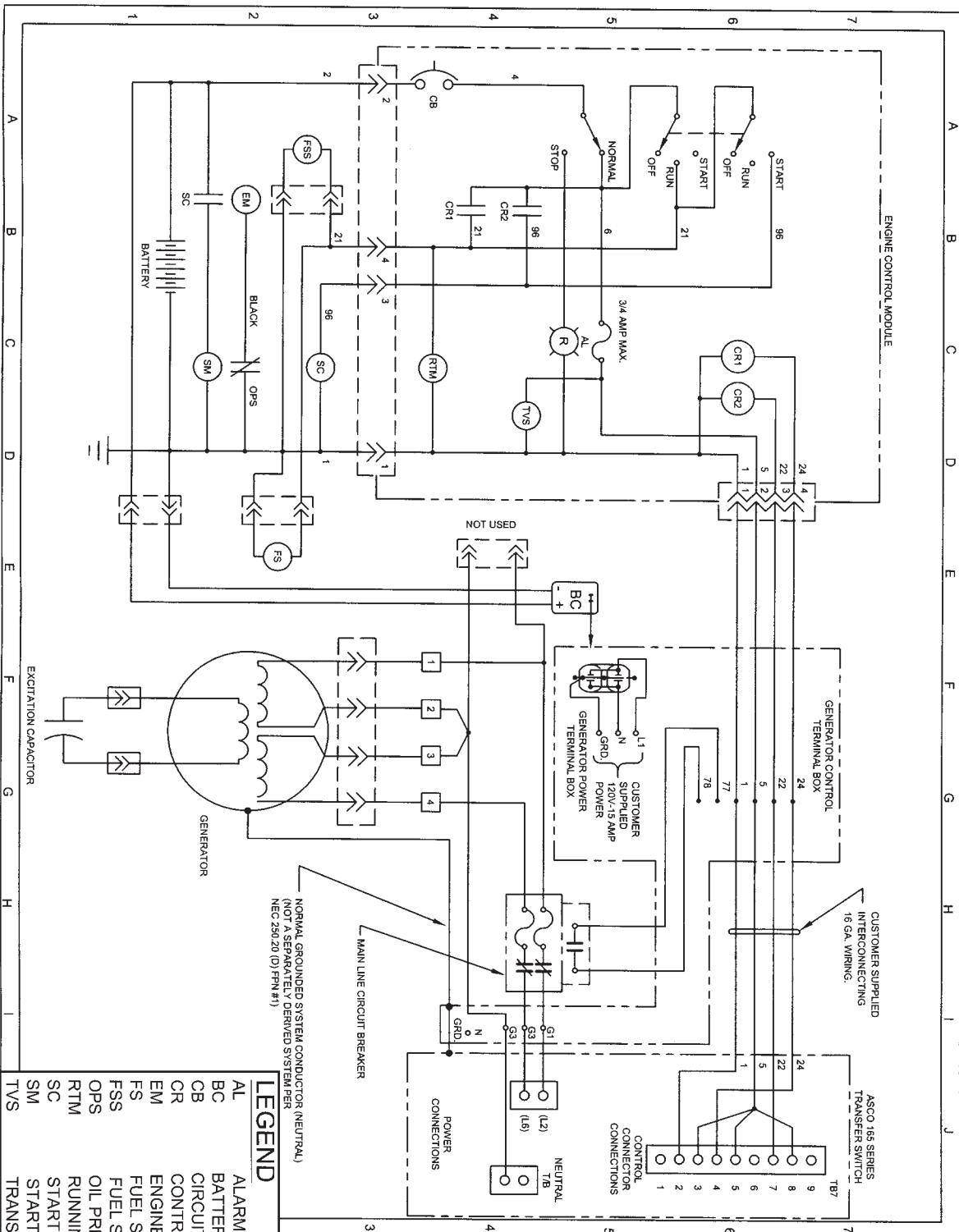
<u>REF#</u>	<u>PART NUMBER</u>	<u>QTY</u>	<u>DESCRIPTION</u>
1	16440-406	1	Fuel Regulator Cover Plate
2	16353-401	1*	Air Inlet Duct
3	16361-401	1	Cover
4	300274-410	1	Engine Compartment Divider Cover
5	16354-401	1	Engine Compartment Divider
6	91644-006	2	Intake Screen
7	15670-403	1	Front Housing
8	91644-007	1	Engine Air Intake Screen
9	16361-402	4	Lifting Hole Cover
10	98375-009	2	Hinge, Service Door
11	99788-466	2	Door Foam
12	99788-443	1	Roof Foam
13	15677-403	1	Roof
14	16360-414	1	Service Door, Right
15	16360-413	1	Service Door, Left
16	16355-405	1	Divider, Left
17	16355-406	1	Divider, Right
18	15287-013	2	Air Seal 16 3/4"
19	15671-406	1	Rear Housing
20	95229-005	2	Door Latch
21	15681-002	2	Door Stop
22	15681-406	2	Door Sill
23	62912-000	11 1/2 FT	Foam Strip
24	21698-001	21	# 10 X 3/8" Self Tapping Screw
25	16451-402	1	Battery Access Cover

\*Contains both Right and Left Duct

# AC AND DC GENERATOR SCHEMATIC PSS8B2W/C



# AC AND DC GENERATOR SCHEMATIC PSS8B4W/C



## LEGEND

- AL ALARM LAMP (SYSTEM OFF)
- BC BATTERY FLOAT CHARGER
- CB CIRCUIT BREAKER
- CR CONTROL RELAY
- EM ENGINE MAGNETO
- FS FUEL SOLENOID
- FSS FUEL SOURCE SELECT (LP or NG)
- OPS OIL PRESSURE SWITCH
- RTM RUNNING TIME METER
- SC START CONTACTOR
- SM STARTER MOTOR
- TVS TRANSIENT VOLTAGE SUPPRESSOR

**WINGO INC**  
 A Division of DTP-Dyna Technology Inc  
 225 South Cordova Avenue  
 Le Center MN 56057  
 507-357-6831