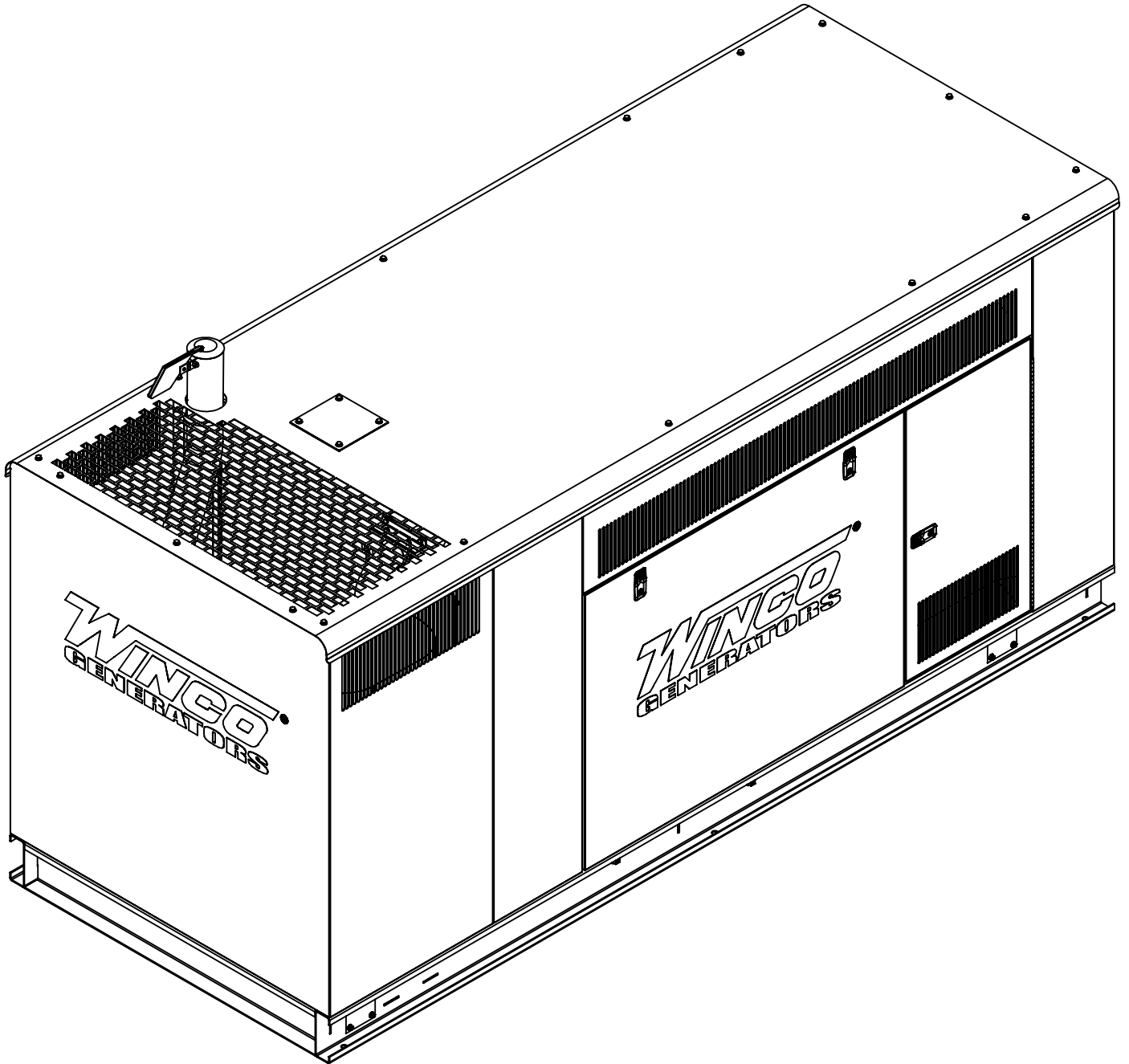


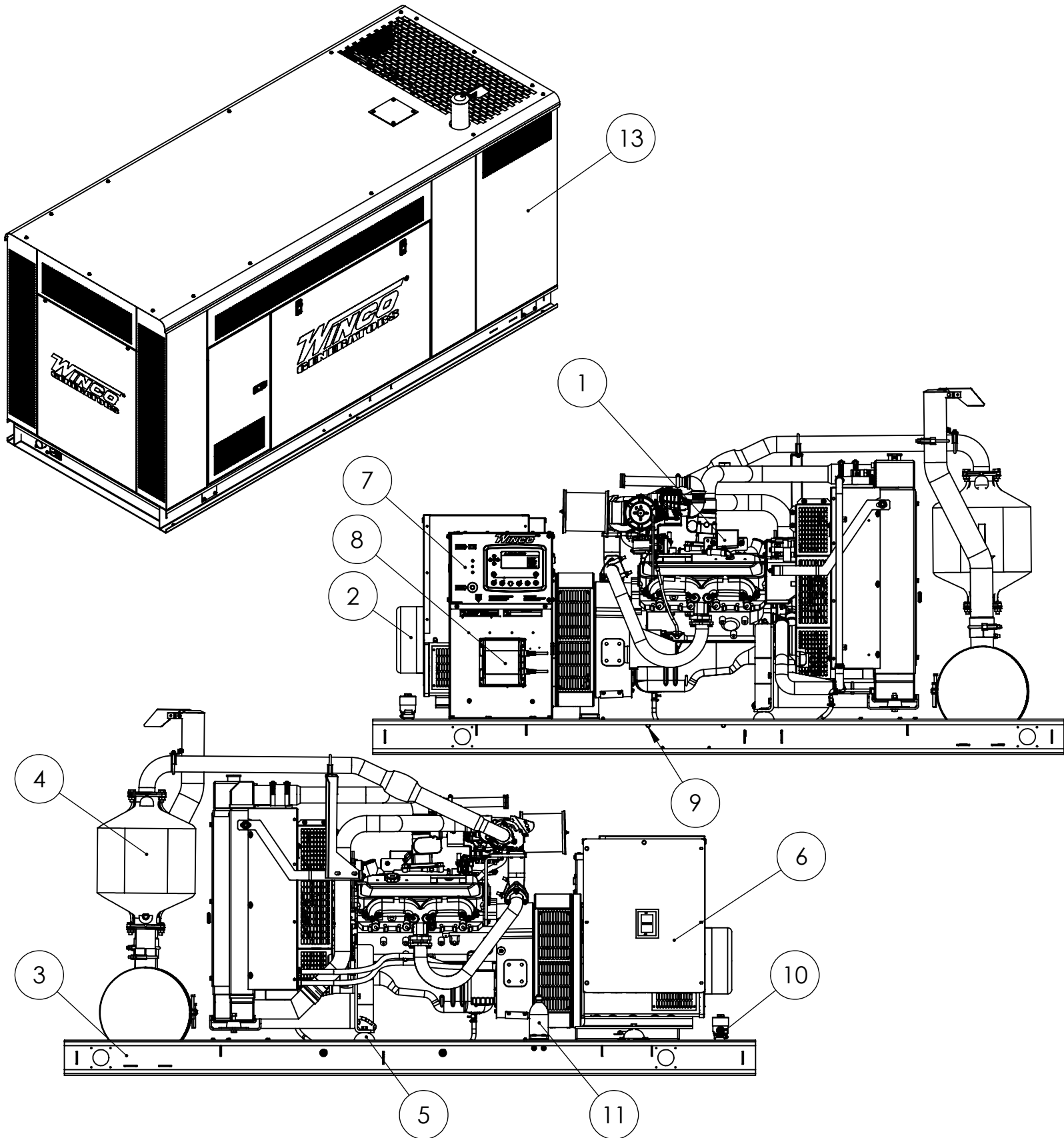
WINCO[®]

PSS100P4-XX/A Parts List



WINCO Service
Phone: 507-357-6831
Email: service@wincogen.com
www.wincogen.com

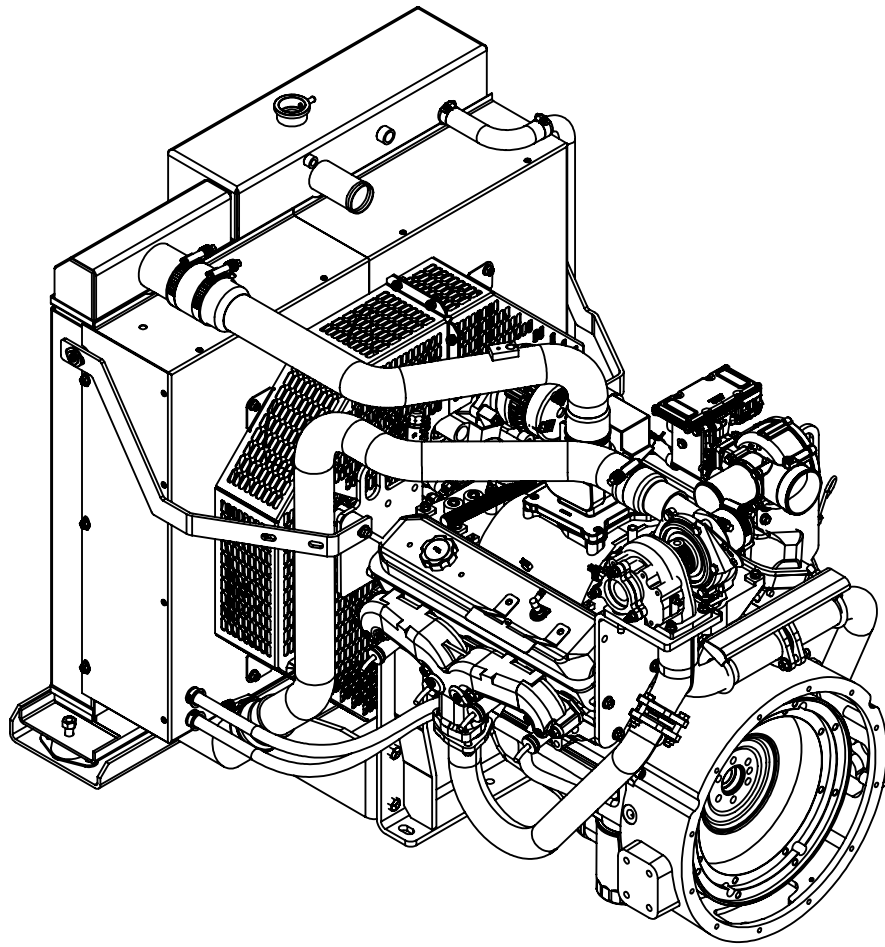
General Assembly



General Assembly continued

ITEM NO.	PART NUMBER	DESCRIPTION	QTY.
1	351987-9	ENGINE GM PSI 5.7L TURBO CAC	1
2	352013-5	GEN.END. UCI274D1L, SAE#3/11.5	1
3	99309-103	WELDED BASE ASSEMBLY	1
4	99687-024	EXHAUST ASSEMBLY	1
5	99489-006	HARDWARE KIT PSS90	1
6	99836-290	CB AND RECONNECT BOX	1
7	351903-46	DSE 7310 MKII CONTROL PEDESTAL ASSEMBLY	1
8	352020-24	BATTERY CHARGER KIT 12V 5 AMP	1
9	99686-001	BATTERY TRAY KIT	1
10	99362-018	FUEL SYSTEM PSS90	1
11	99682-010	BLOCK HEATER KIT	1
12	99692-291	GEN MOD 1 PH	1
13	2000-2100	HOUSING ASSEMBLY	1
14	351559-9	DECAL INSTALL	1

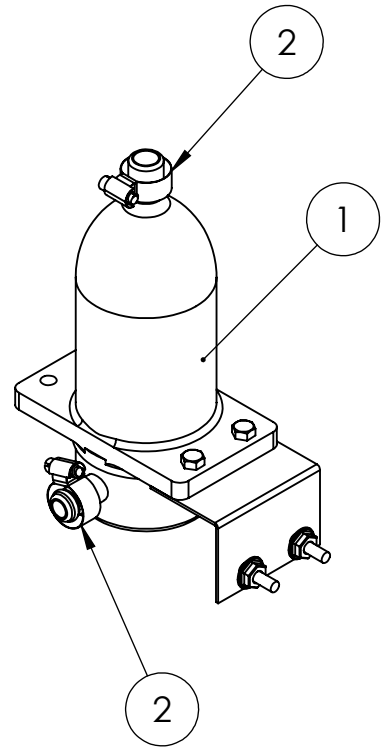
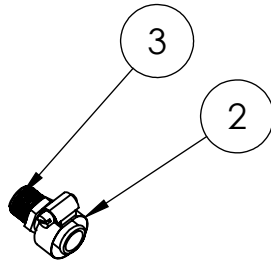
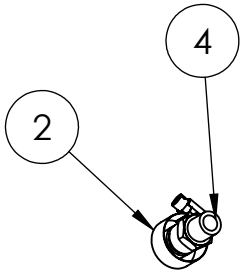
Engine



ITEM NO.	PART NUMBER	DESCRIPTION	QTY.
1	4-126	OIL FILTER	1
2	4-105	SPARK PLUG	8
3	97294-008	AIR FILTER	1
4	4-101	FAN / ALTERNATOR BELT	1
5	4-102	UPPER RADIATOR HOSE	1
6	4-103	LOWER RADIATOR HOSE	1

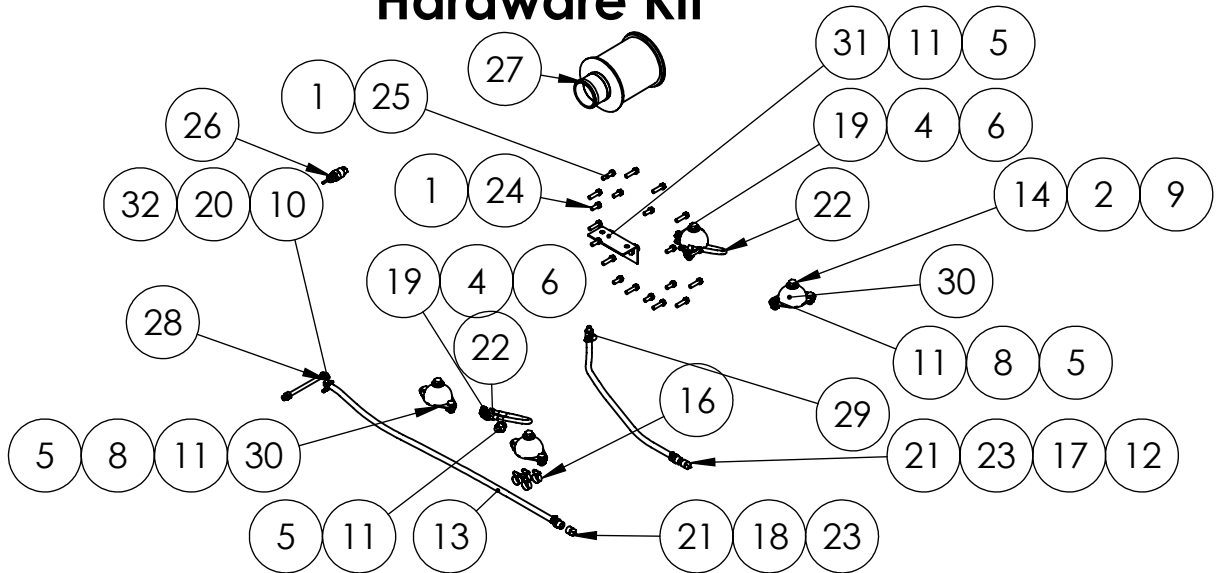
Contact Winco service for full engine parts support.

Block Heater



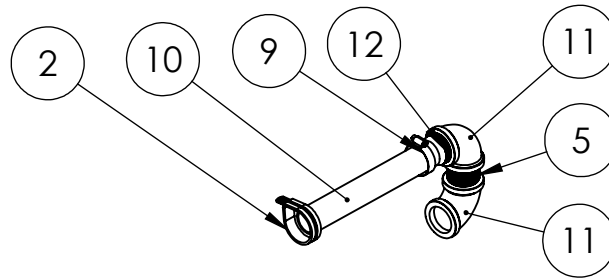
ITEM NO.	PART NUMBER	DESCRIPTION	QTY.
1	80781-003	BLOCK HEATER ASSEMBLY	1
2	81018-005	HOSE CLAMP 1.0625-.500	4
3	92388-000	HOSE FIT .375NPT X .625 HOSE	1
4	350341	HOSE FITTING 1/4 NPT (M) X 5/8 HOSE BARB	1
5	56107-000	HOSE 0.625ID HTR RED 32IN LONG	1
6	56107-000	HOSE 0.625ID HTR RED 36IN LONG	1
7	62625-004	30IN HEAT SLEEVE	1
8	62625-004	12IN HEAT SLEEVE	1

Hardware Kit

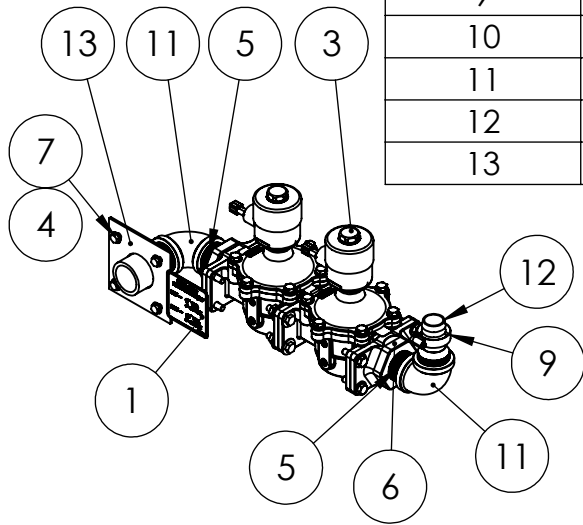


ITEM NO.	PART NUMBER	DESCRIPTION	QTY.
1	481-001	LOCKWASHER .375 SPLIT (.377-.385 ID X .680 OD X .094 THK) PLAIN	20
2	636-000	LOCKWASHER .50 SPLIT (.502 ID X .869 OD X .125 THK) ZINC	4
3	1744-000	NUT HEX .5-13 GR5 ZINC	4
4	4516-001	LOCKWASHER .375 (.384-.398 ID X .670-.694 OD X .032-.040 OD) EXTERNAL TOOTH ZINC	2
5	16248-001	NUT FLANGE .5-13 LOCK SERRATED GR5 ZINC	11
6	16250-000	NUT FLANGE .375-16 LOCK SERRATED GR5 ZINC	2
7	20039-000	LOCKWASHER .500 (.513-.530 ID X .880-.90 OD X .037-.045 THK) EXTERNAL TOOTH ZINC	1
8	21867-001	WASHER FLAT (.515 ID X .875 OD X .059-.067 THK) MIL SPEC CADMIUM	8
9	21867-000	WASHER FLAT 0.50 (.562 ID X 1.375 OD X .100 TH) GR-LOW CARBON YELLOW	4
10	23885-000	ELBOW PIPE 1/8NPT 90	1
11	48178-000	HHCS 0.5-13 X 1.00 GR5 ZINC	11
12	55505-000	HOSE 3/8 RUBBER 17 IN LONG	1
13	55505-000	HOSE 3/8 RUBBER 34 IN LONG	1
14	57580-000	HHCS 0.5-13 X 1.50 GR5 ZINC	4
15	62625-004	HOSE HEAT SLEEVE 48	1
16	81018-005	HOSE CLAMP 1.0625-.500	4
17	81018-008	HOSE CLAMP .875-.3125	2
18	81018-009	HOSE CLAMP .625-.250	2
19	91658-001	HHCS .375-16 X 1.00 GR5 ZINC	2
20	92386-010	1/8 NPT X 6" PIPE NIPPLE	1
21	93084-000	PIPE PLUG .50 GALV	2
22	93542-017	LEAD WIRE ASSY	2
23	94319-008	HOSE FIT. .500-14NPT X .375 HOSE BARB	2
24	96000-002	HHCS .375-16 X 1.00 GR5 BLK	8
25	96000-004	HHCS .375-16 X 1.50 GR5 BLK	12
26	96333-005	PROBE, LOW COOLANT, 3-WIRE, 1_4 BSPT	1
27	97294-005	AIR FILTER ASSEMBLY	1
28	98771-003	PETCOCK	1
29	98906-009	OIL DRAIN VALVE M12-1.75 X 3/8 F-107N	1
30	98956-001	SHOCKMOUNT 40 DURO (GREEN DOT)	4
31	99826-503	SUPPORT BRACKET	1
32	300349-5	ADAPTER M14-1.5M X 1/8 27 NPT F	1
33	93947-000	.5 NPT MALE X .25NPT FEMALE REDUCER	1

Fuel System - Vapor

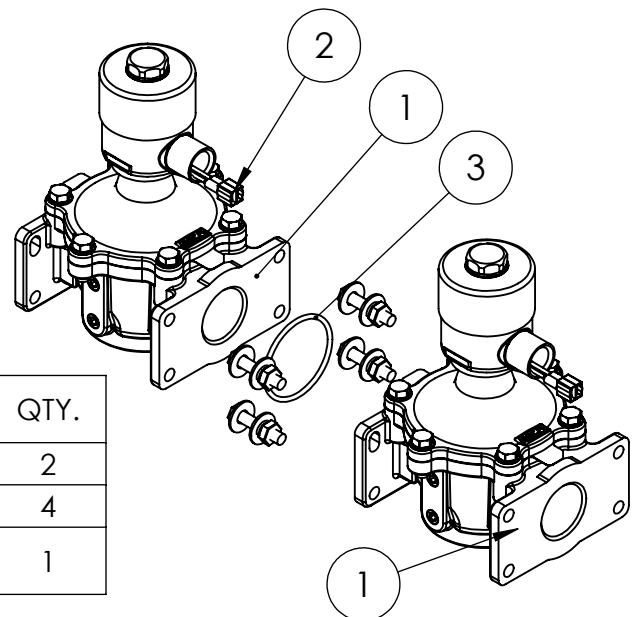


ITEM NO.	PART NUMBER	DESCRIPTION	QTY.
1	15210-010	FUEL PRESSURE DECAL PSS UNITS	1
2	15374-002	TUBE CLIPS	1
3	16135-002	MODIFIED FUEL VALVE ASSY	1
4	16248-000	.25-20 FLANGE NUT	4
5	22762-000	PIPE NIPPLE 1.25NPT X 2 BLACK	4
6	42943-001	ADAPTER FLANGE 1.25' ASCO VALVE	1
7	65000-000	HHCS .25-20 X .625 GR18-8 SS	4
8	65005-000	WASHER FLAT .25 (.281 ID X .625 OD X .040 THK) GR18-8 SS	4
9	81018-001	HOSE CLAMP 1.25-2.25	2
10	81103-000	HOSE 1.25ID, PROPANE, 75IN LONG	75
11	92042-000	ELBOW PIPE 1.25NPT 90	4
12	92388-008	HOSE FIT 1.25 NPT X 1.25 HOSE	2
13	99065-005	FUEL WELDMENT 1.25"	1

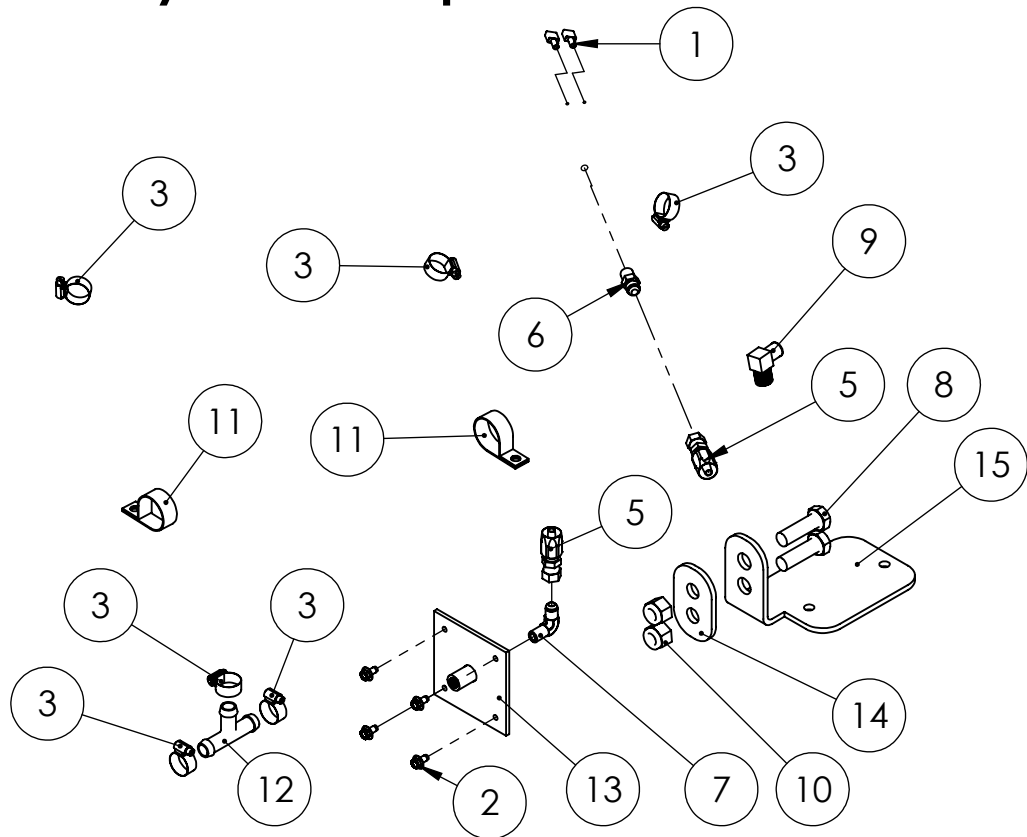


Modified Fuel Valve Assembly

ITEM NO.	PART NUMBER	DESCRIPTION	QTY.
1	42943-125	SOLENOID GAS VALVE 12VDC 1.25" NPT	2
2	48602-004	TERMINAL MALE 16-14 AWG .250 TAB	4
3	42943-002	ORING KIT 1" & 1.25" ASCO FLANGED VALVES	1

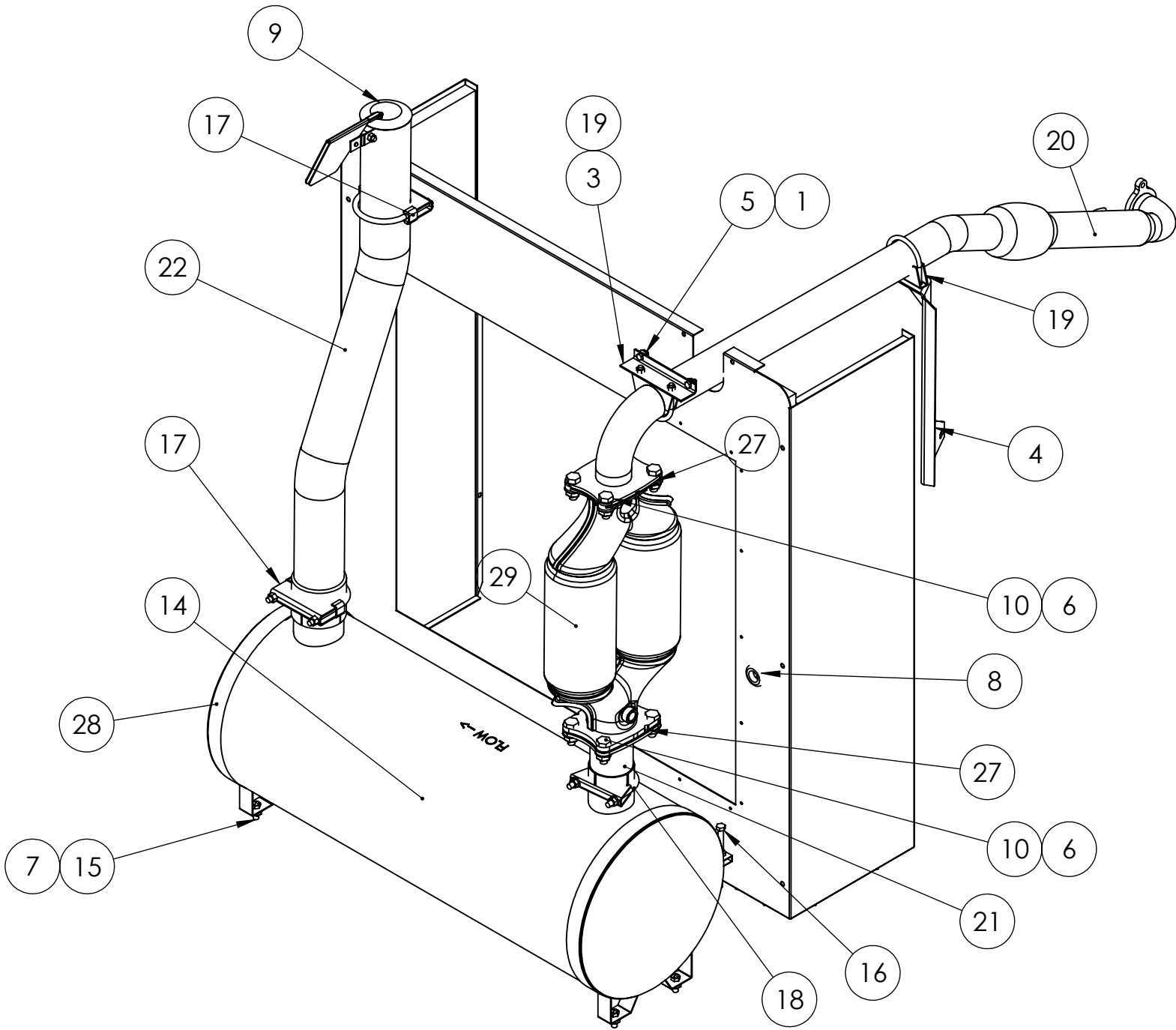


Fuel System - Liquid Withdrawl



ITEM NO.	PART NUMBER	DESCRIPTION	QTY.
1	48602-004	TERMINAL MALE 16-14 AWG .250 TAB	2
2	65004-000	STS .25-20 X 0.5 4010 SILVER COATED (SELF TAP SCREW)	4
3	81018-005	HOSE CLAMP 1.0625-.500	6
4	81640-000	HOSE 5/16ID UNCUT RUBR.LP	76
5	81642-000	HOSE FITTING, JIC 37 DEG. .56 THREAD, FEMALE, SWIVEL, 0.3125 ID HOSE, NON-CRIMP, STRAIGHT	2
6	81643-001	HOSE FITTING JIC3/8 - 1/4 NPT	1
7	81643-002	HOSE FITTING JIC 3/8 - 1/4 NPT 90	1
8	91083-004	HHCS .625-11 X 2.00 GR5 ZINC	2
9	92382-001	HOSE FIT.ELBOW .500NPT X .625 HOSE	1
10	95468-000	NUT HEX .625-11 NYLOCK GR5 ZINC	2
11	97391-008	TUBE CLAMP 1.25"	2
12	97484-009	HOSE FIT. TEE .625IN STEEL	1
13	99065-001	FUEL INLET WELDMENT	1
14	99367-191	MOUNTING PLATE	1
15	99367-192	LIQUID WITHDRAWAL MOUNTING BRACKET	1
16	56107-000	HOSE 0.625ID HTR RED 30IN LONG	30
17	62487-001	LOOM 1IN OD	1
18	62625-004	50IN HEAT SLEEVE	1
19	99420-029	LPG FUEL SOLENOID EXTENSION HARNESS	1

Exhaust System

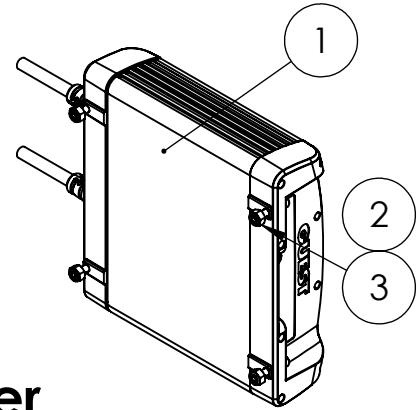


Exhaust System

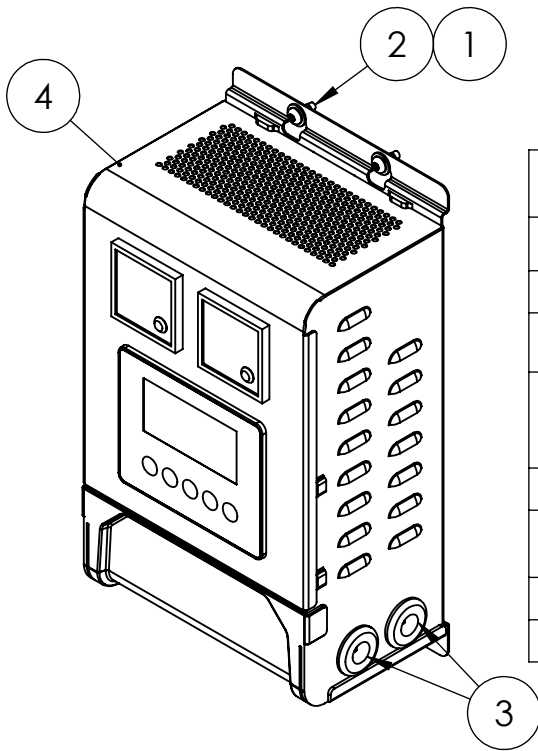
ITEM NO.	PART NUMBER	DESCRIPTION	QTY.
1	476-000	HHCS .25-20 X .625 GR5 ZINC	2
2	2000-0139	PSS90 RADIATOR HOUSING	1
3	16009-002	EXHAUST SUPPORT	1
4	16009-003	EXHAUST SUPPORT BRACKET	1
5	16248-000	.25-20 FLANGE NUT	2
6	16248-001	.5-13 FLANGE NUT	8
7	16250-000	NUT FLANGE .375-16 LOCK SERRATED GR5 ZINC	4
8	16302-000	GROMMET, 0.875" ID x 1.625 OD, 1.25 HOLE, 16G MATERIAL	1
9	53111-005	3.5" RAIN CAP	1
10	57580-000	HHCS 1/2-13 X 1.5 GR5	8
11	65000-001	HHCS .25-20 X 0.75 GR18-8 SS	4
12	65005-000	WASHER FLAT .25 (.281 ID X .625 OD X .040 THK) GR18-8 SS	4
13	65006-000	.25-20 FLANGE NUT SS	4
14	80519-019	CRITICAL GRADE SILENCER	1
15	91658-001	HHCS .375-16 X 1.00 GR5 ZINC	4
16	91658-014	.375-16X3.5 HHB	2
17	93489-000	3.5" EXHAUST CLAMP	2
18	93489-001	MUFFLER CLAMP 3"	1
19	93489-002	MUFFLER CLAMP 2.5"	2
20	99298-025	EXHAUST FLEX	1
21	99298-036	CATALYTIC CONVERTER TO MUFFLER PIPE	1
22	99298-037	TAIL PIPE	1
23	99393-124	RADIATOR SIDE FOAM	2
24	99393-236	RADIATOR TOP FOAM	1
25	99393-237	RAD LEFT SIDE	1
26	99393-238	RAD RIGHT SIDE	1
27	300541-3	GM, CATALYTIC CONVERTER GASKET	2
28	350264-6	MOUNTING BAND	2
29	351999-2	CATALYTIC CONVERTER 5.7LT	1

Battery Charger

ITEM NO.	PART NUMBER	DESCRIPTION	QTY.
1	72036-023	BATTERY CHARGER, 120VAC/12VDC, 5.0 AMP, GUEST MODEL 2708A	1
2	64872-001	SOC.HCS 10-24 X 1 BLK	4
3	5315-000	NUT HEX 10-24 NYLON	4



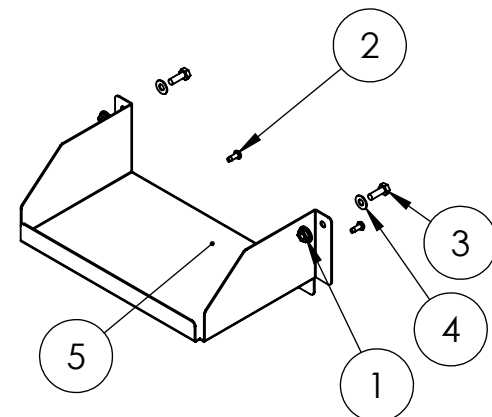
NFPA Battery Charger



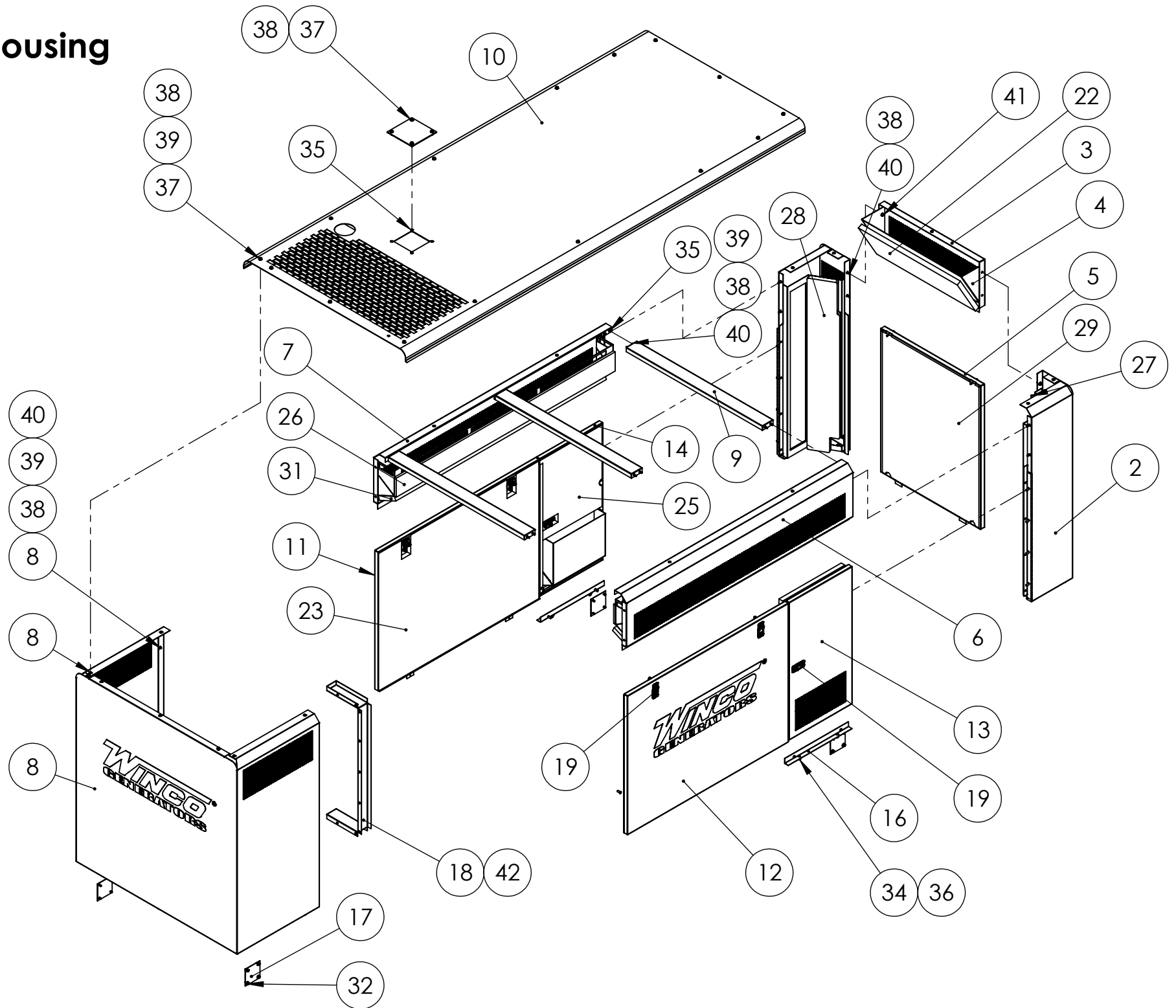
ITEM NO.	PART NUMBER	DESCRIPTION	QTY.
1	598-000	WASHER FLAT #10 (.219 ID X .500 OD X .046 THK) GR-LOW CARBON ZINC	4
2	21698-001	TORX PAN HEAD SCREW #10	4
3	40730-000	GROMMET, 0.5ID x 1.063OD, 0.8125 HOLE, 16G Material <not specified>	3
4	72036-020	BATTERY CHARGER, 12VDC, 10AMP, DSE MODEL BC2410EI-02 LCD AND METERS NFPA 110	1
5	95064-006	FUSE AGC 10 AMP	1
6	96922-001	PWR.SUP.CORD, 16/3, 8 FEET W/5-15P PLUG	1
7	7547-000	TERMINAL, RING, 16-14AWG, 3/8" STUD	2
8	2489-004	IN-LINE FUSE HOLDER	1

Battery Tray Kit

ITEM NO.	PART NUMBER	DESCRIPTION	QTY.
1	16248-000	.25-20 FLANGE NUT	2
2	21698-001	TORX PAN HEAD SCREW #10	2
3	65000-001	HHCS .25-20 X 0.75 GR18-8 SS	2
4	65005-000	WASHER FLAT .25 (.281 ID X .625 OD X .040 THK) GR18-8 SS	2
5	99317-001	BATTERY TRAY	1
6	53220-073	BATTERY CABLE 1GA 25 IN	1
7	53220-013	BATTERY CABLE 1GA 24 IN	1



Housing

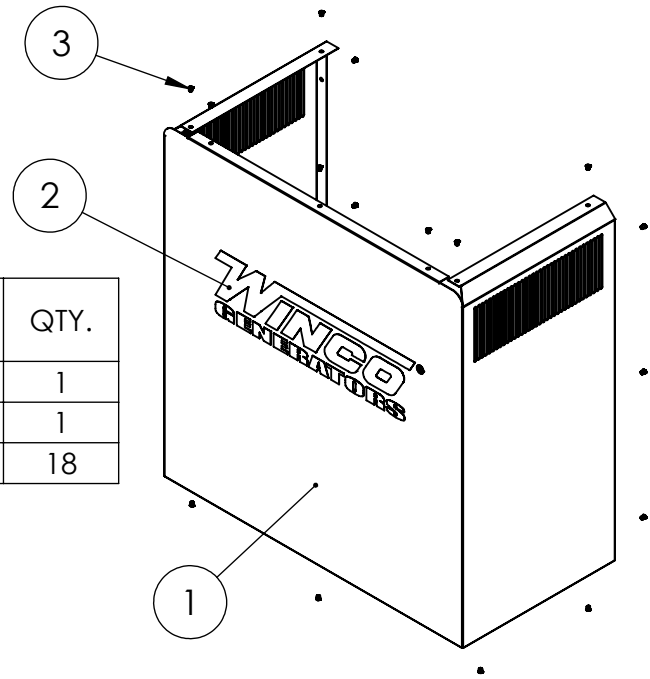


Housing continued

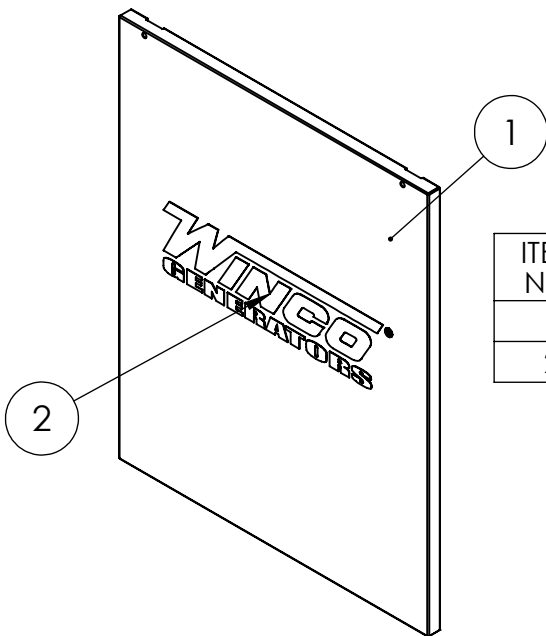
ITEM NO.	PART NUMBER	DESCRIPTION	QTY.
1	2000-2085	CORNER ASM, RIGHT REAR	1
2	2000-2084	CORNER ASM, LEFT REAR	1
3	2000-2073	PANEL, REAR SILL	1
4	99378-096	REAR SIL L BAFFLE	1
5	2000-0134	REAR CENTER PANEL	1
6	2000-2082	WELDMENT, LEFT SIDE BAFFLE	1
7	2000-2083	WELDMENT, RIGHT SIDE BAFFLE	1
8	2000-0138	PSS90 FRONT	1
9	2000-0131	ROOF SUPPORT	3
10	2000-2077	PANEL, ROOF	1
11	2000-0133	PSS90 RIGHT SIDE PANEL	1
12	2000-0132	LEFT SIDE PANEL	1
13	2000-0142	LEFT DOOR WELDMENT	1
14	2000-0143	RIGHT DOOR WELDMENT	1
15	99060-017	ROOF COVER ASSEMBLY	1
16	2000-0130	DOOR STOP	2
17	99060-012	COVER PLATE, LIFTING EYE	4
18	99378-095	CAC BAFFLE	1
19	95229-004	LATCH	6
20	99393-122	ROOF FOAM	1
21	99393-232	LEFT LOWER BAFFLE FOAM	1
22	99393-130	REAR CENTER BAFFLE FOAM	1
23	99393-229	SIDE PANEL FOAM	2
24	99393-233	DOOR PANEL FOAM, LEFT SIDE	1
25	99393-231	DOOR PANEL FOAM, RIGHT SIDE	1
26	99393-234	SIDE TOP BAFFLE FOAM	2
27	99393-295	FOAM, LEFT REAR CORNER BAFFLE	1
28	99393-296	FOAM, RIGHT REAR CORNER BAFFLE	1
29	99393-125	REAR CENTER FOAM	1
30	99393-230	FOAM, ROOF, EXHAUST	1
31	99393-235	RIGHT LOWER BAFFLE FOAM	1
32	65004-000	STS .25-20 X 0.5 4010 SILVER COATED (SELF TAP SCREW)	16
33	65000-004	HHCS .25-20 X 1.75 GR18-8 SS	2
34	98879-001	THREAD STUD 5/16-18 X .75	19
35	352125-1	1/4-20 RIVET NUT 22 GA-10GA	23
36	16249-000	.3125-18 FLANGE	12
37	65000-001	HHCS .25-20 X 0.75 GR18-8 SS	30
38	65005-000	WASHER FLAT .25 (.281 ID X .625 OD X .040 THK) GR18-8 SS	59
39	65003-000	LOCKWASHER .25 SPLIT (.252-.260 ID X .487 OD X .062 THK) GR18-8 SS	41
40	466-000	.25-20X.75 HHB	26
41	65006-000	.25-20 FLANGE NUT SS	14
42	21698-001	TORX PAN HEAD SCREW #10	9

Front Panel

ITEM NO.	PART NUMBER	DESCRIPTION	QTY.
1	2000-0138	PSS90 FRONT	1
2	98313-000	WINCO LOGO	1
3	352125-1	1/4-20 RIVET NUT 22 GA-10GA	18



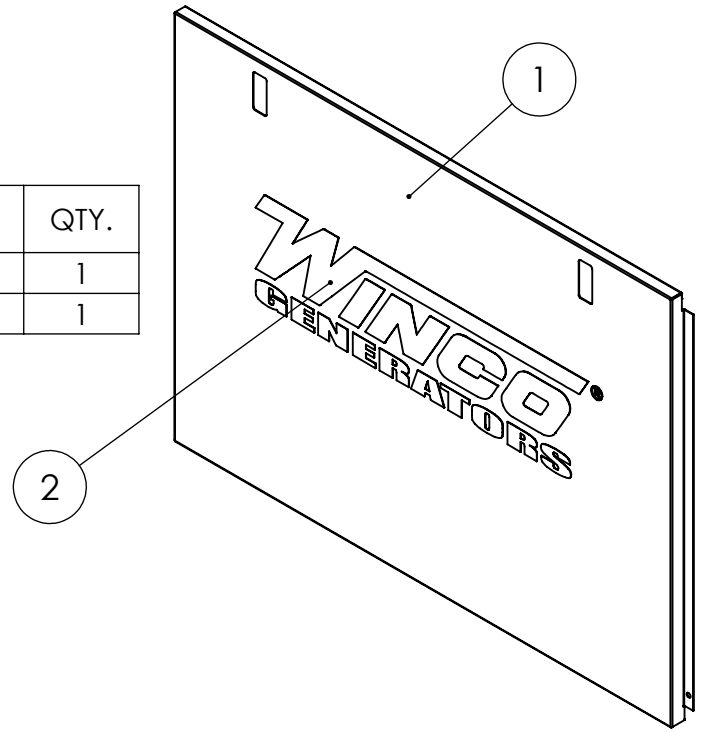
Rear Center Panel



ITEM NO.	PART NUMBER	DESCRIPTION	QTY.
1	2000-0134	REAR CENTER PANEL	1
2	98313-001	WINCO LOGO	1

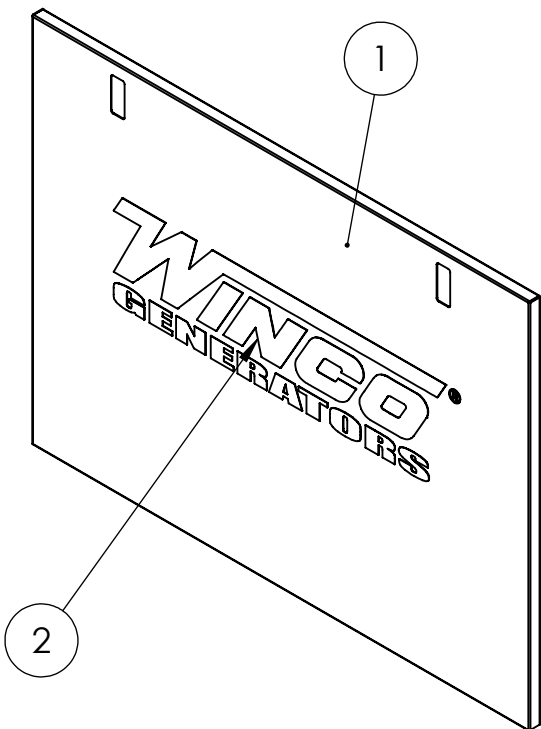
Left Side Panel

ITEM NO.	PART NUMBER	DESCRIPTION	QTY.
1	2000-0132	PSS90 LEFT SIDE PANEL	1
2	98313-000	WINCO LOGO	1



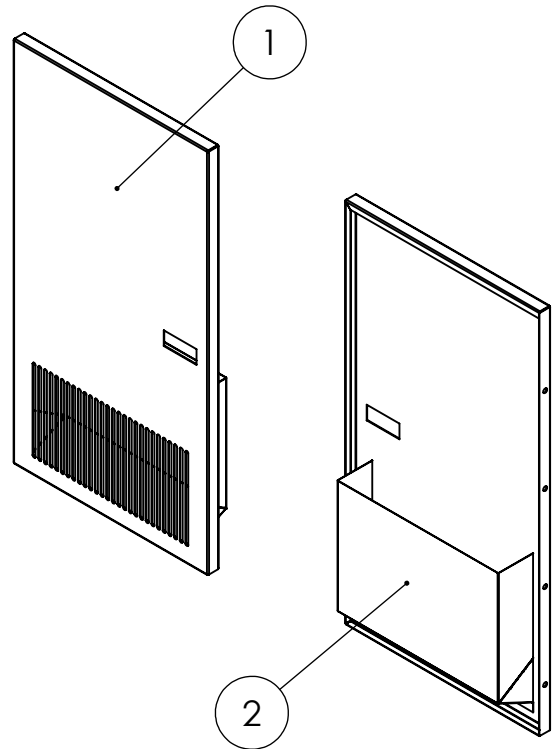
Right Side Panel

ITEM NO.	PART NUMBER	DESCRIPTION	QTY.
1	2000-0133	PSS90 RIGHT SIDE PANEL	1
2	98313-000	WINCO LOGO	1



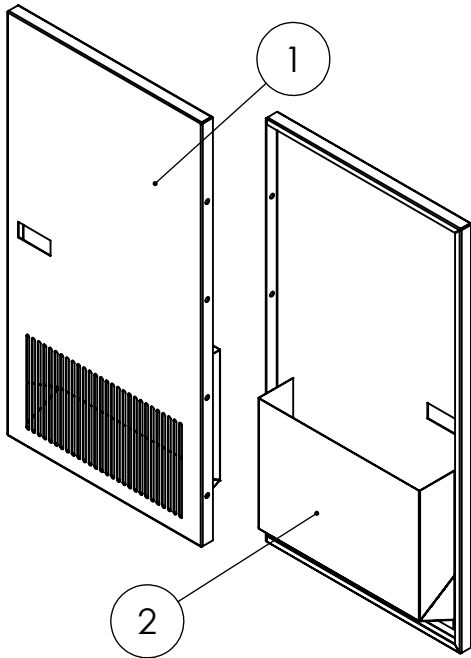
Right Door

ITEM NO.	PART NUMBER	DESCRIPTION	QTY.
1	15680-068	RIGHT DOOR	1
2	15680-069	DOOR BAFFLE	1



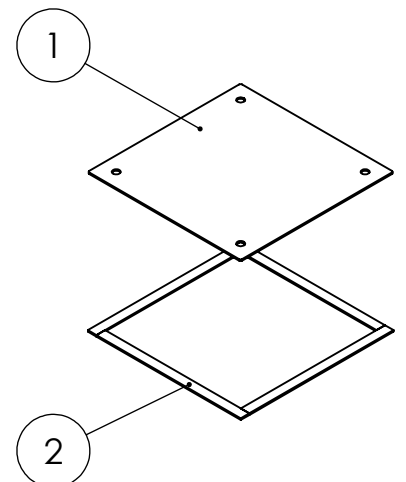
Left Door

ITEM NO.	PART NUMBER	DESCRIPTION	QTY.
1	15680-067	LEFT DOOR	1
2	15680-069	DOOR BAFFLE	1



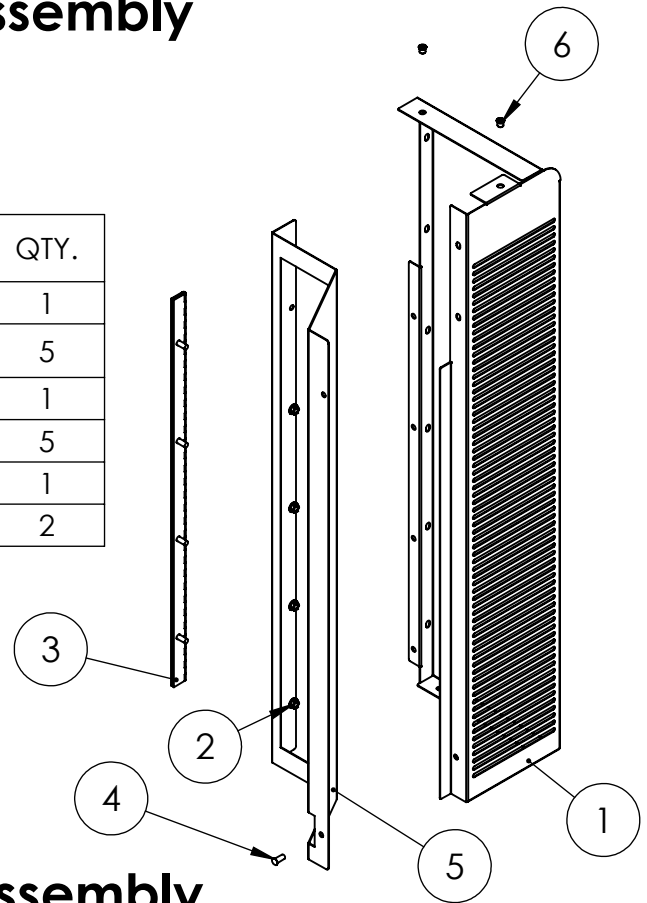
Roof Cover

ITEM NO.	PART NUMBER	DESCRIPTION	QTY.
1	99060-017	ROOF COVER PLATE ASSEMBLY	1
2	62912-002	FOAM STRIP 1/16 X 3/8 5.625" LONG	4

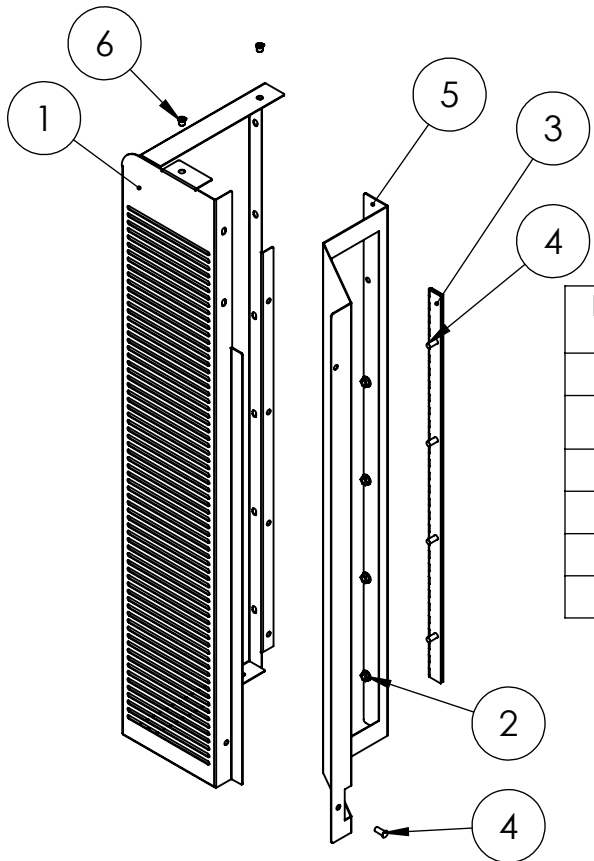


Right Rear Corner Assembly

ITEM NO.	PART NUMBER	DESCRIPTION	QTY.
1	2000-2074	CORNER, REAR RIGHT	1
2	16249-000	NUT FLANGE .3125-18 LOCK SERRATED GR5 ZINC	5
3	98375-043	DOOR HINGE	1
4	98879-001	THREAD STUD 5/16-18 X .75	5
5	2000-2081	BAFFLE, RIGHT REAR	1
6	352125-1	1/4-20 RIVET NUT 22 GA-10GA	2

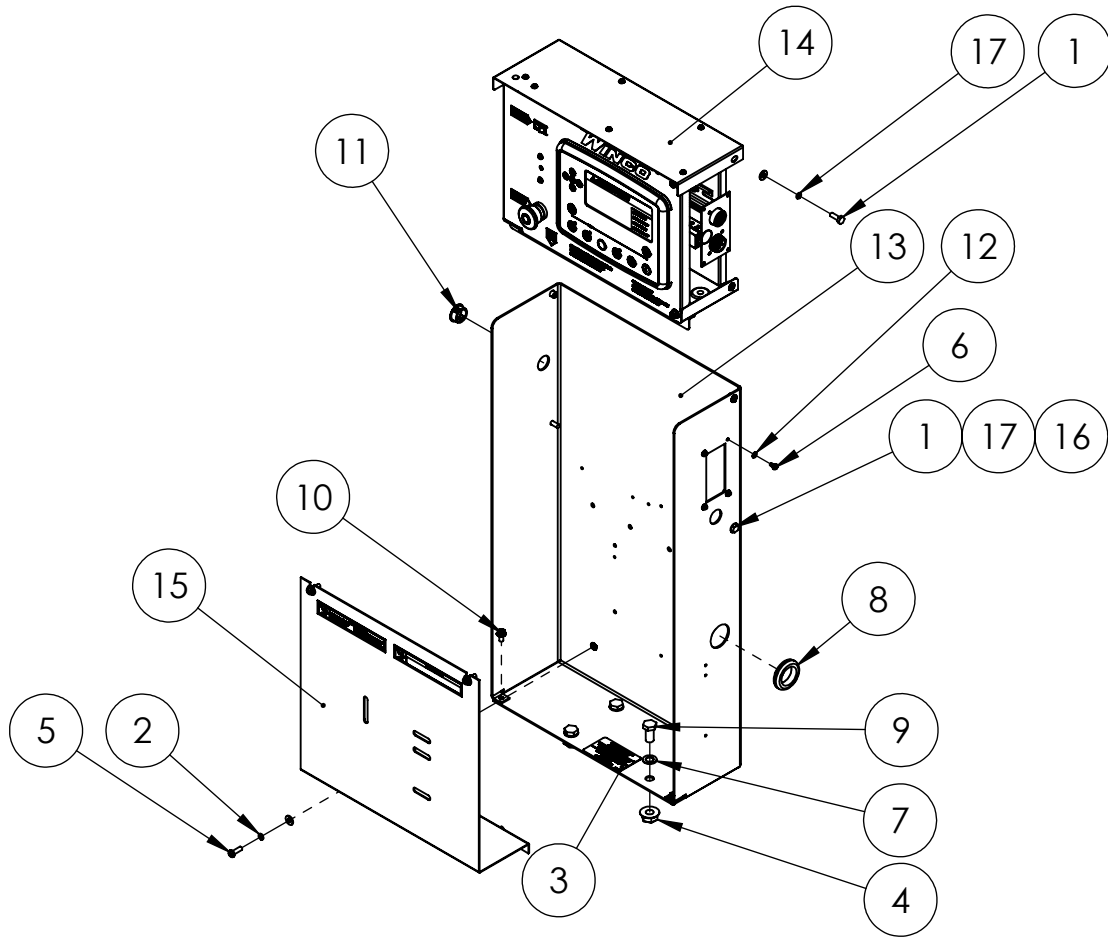


Left Rear Corner Assembly



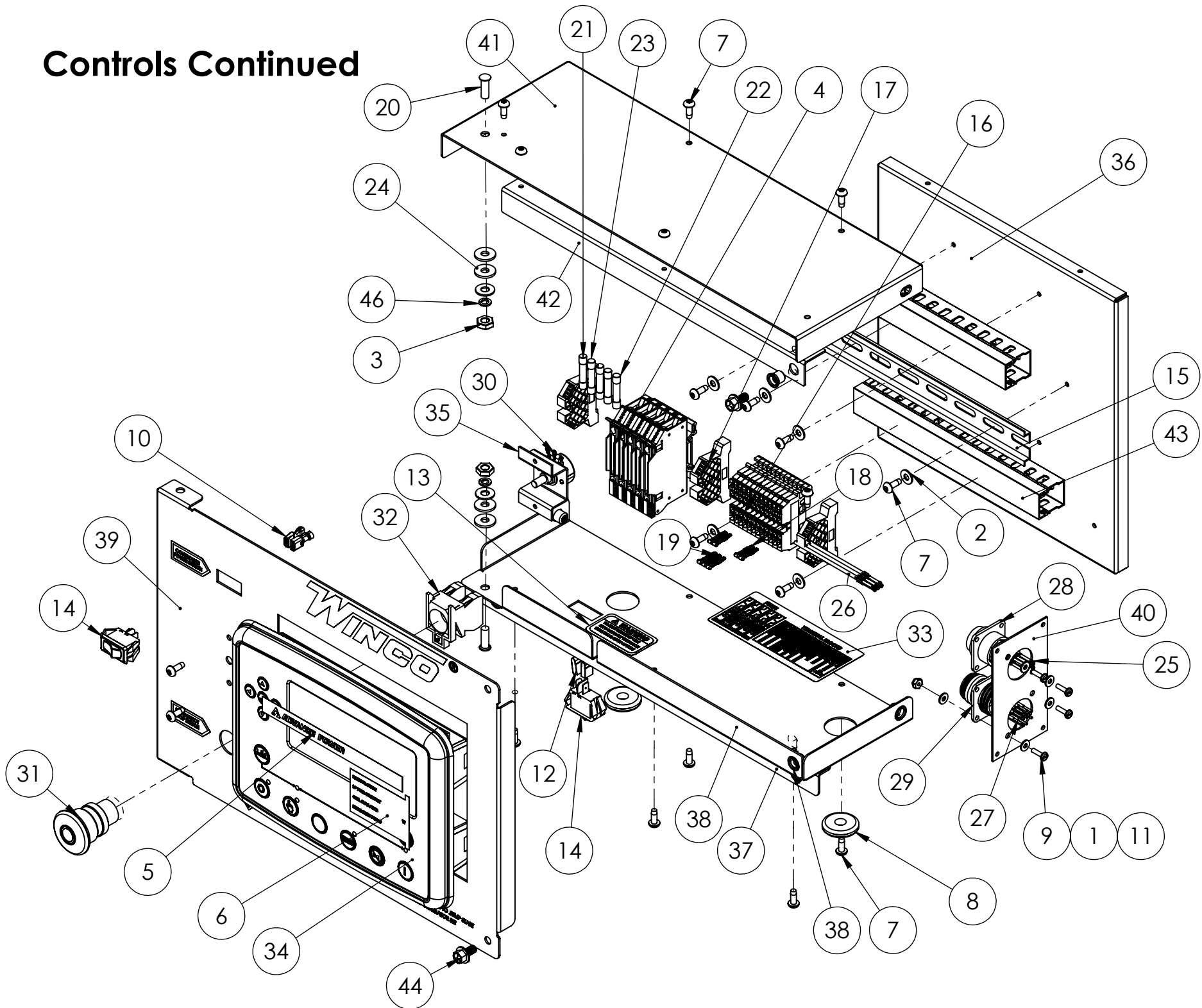
ITEM NO.	PART NUMBER	DESCRIPTION	QTY.
1	2000-2072	CORNER, LEFT REAR	1
2	16249-000	NUT FLANGE .3125-18 LOCK SERRATED GR5 ZINC	5
3	98375-043	DOOR HINGE	1
4	98879-001	THREAD STUD 5/16-18 X .75	5
5	2000-2080	BAFFLE, LEFT REAR	1
6	352125-1	1/4-20 RIVET NUT 22 GA-10GA	2

Controls



ITEM NO.	PART NUMBER	DESCRIPTION	QTY.
1	466-000	.25-20X.75 HHB	4
2	479-000	LOCK WASHER, .25" SPLIT	4
3	16200-516	MAINTENANCE KIT DECAL	1
4	16248-001	.5-13 FLANGE NUT	4
5	21253-000	RHMS 1/4-20X .75	4
6	21698-001	TORX PAN HEAD SCREW #10	4
7	21867-001	WASHER FLAT (.515 ID X .875 OD X .059-.067 THK) MIL SPEC CADMIUM	4
8	23917-005	GROMMET 1-5/16" ID	1
9	48178-000	HHCS 0.5-13 X 1.00 GR5 ZINC	4
10	55440-000	STS .25-20 X 0.50 ZINC SELF TAP SCREW	2
11	93402-003	HOLE PLUG 1.00IN DIA	1
12	96286-002	FLAT WASHER NYLON	4
13	99826-501	CONTROL BOX PEDESTAL DSE 7310 MKII	1
14	351891-54	CONTROLLER ASSEMBLY, DSE7310 MKII, UNIVERSAL	1
15	351903-29	PEDESTAL COVER PLATE	1
16	512-000	.25 WASHER	8
17	479-000	LOCK .25 SPLIT	4

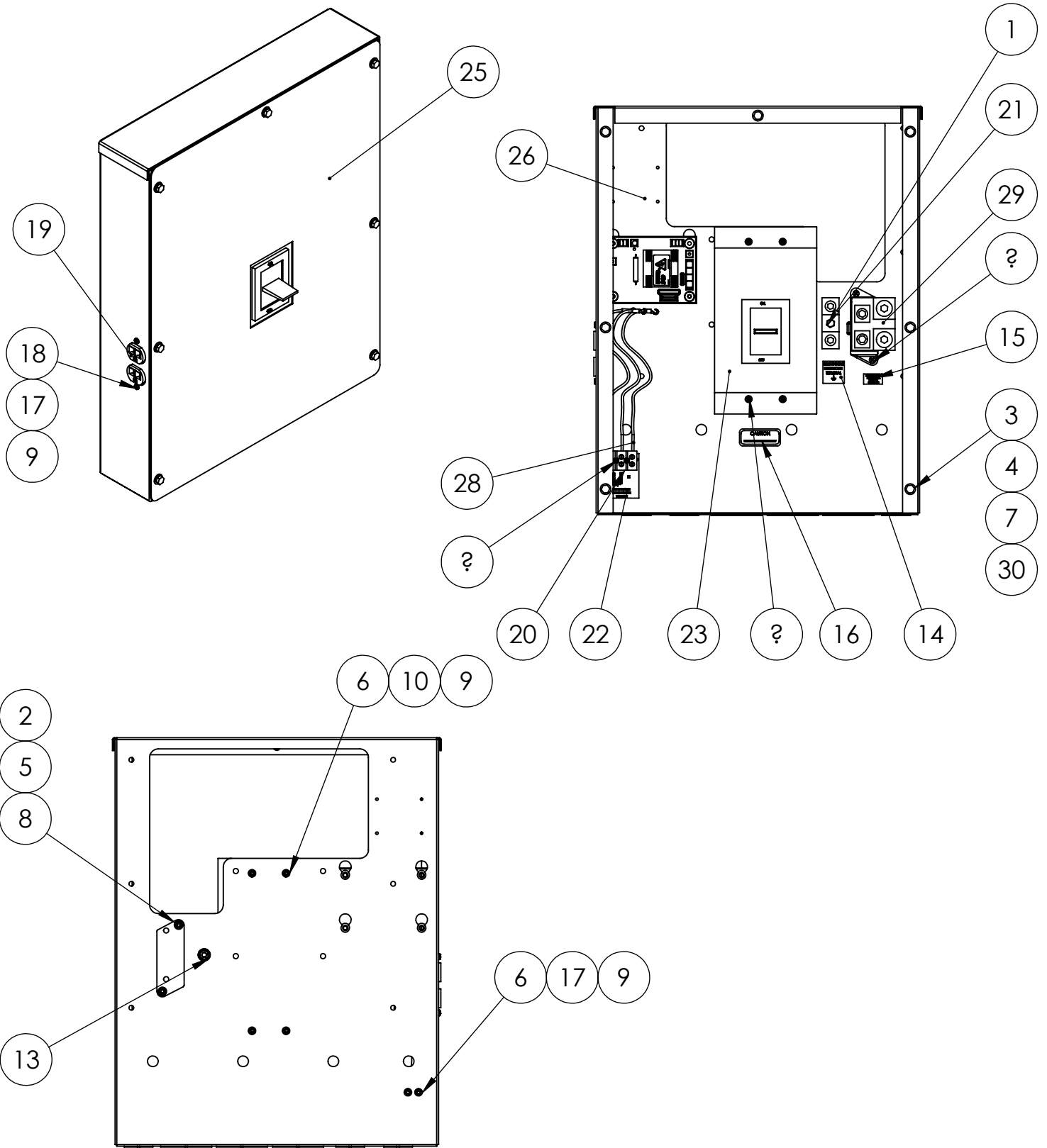
Controls Continued



Controls Continued

ITEM NO.	PART NUMBER	DESCRIPTION	QTY.
1	425-000	WASHER FLAT #6 (.156 ID X .375 OD X .046 THK) GR-LOW CARBON ZINC	8
2	598-000	#10 WASHER	6
3	638-000	HEX NUT, .25IN	2
4	2489-003	DIN RAIL FUSE HOLDER 1-1/4 X 1/4IN	5
5	16600-005	DSE MKII ADVANCE POWER LOGO INSERT	1
6	16601-005	DSE 7310 MKII LIGHT LEGEND CARD INSERT	1
7	21698-001	TORX PAN HEAD SCREW #10	19
8	23917-002	GROMMET, .375ID X 1	2
9	24988-000	SCREW 6-32 X 1/2 BIND	4
10	48602-003	TERMINAL, FEMALE, 16-14AWG, .250 TAB, INSULATED	2
11	51802-000	NUT HEX #6-32 NYLOCK	4
12	61898-000	TERMINAL FLAG 16/14AWG .250	2
13	63941-004	DECAL FUSE WARNING (ENGLISH)	1
14	64089-000	SPST, ROCKER SWITCH	2
15	64551-005	DIN RAIL 9.5"	1
16	80623-009	TERMINAL BLOCK, DIN MOUNTED, SPRING CAGE, SINGLE LEVEL, 24-12 AWG, 20A, 600V	12
17	80623-010	END BLOCK, DIN MOUNTED	3
18	80623-011	2-POLE TERMINAL BLOCK JUMPER	2
19	80623-012	3-POLE TERMINAL BLOCK JUMPER	1
20	94980-003	THREAD STUD .25-20X.750	2
21	95064-006	FUSE AGC 10 AMP	1
22	95064-008	FUSE AGC 2 AMP	3
23	95064-000	FUSE AGC 3 AMP	1
24	96286-001	WASHER NYLON .25 (.26 ID X .688 OD X .070 THK)	4
25	96923-001	TERMINAL, SOCKET, 18-16AWG	10
26	96923-101	PLUG TERMINAL	4
27	96924-001	TERMINAL, PIN, 18-16AWG	16
28	96925-002	14 PIN CONNECTOR	1
29	96925-006	CONNECTOR, PLUG, 16 POSITION	1
30	97517-001	RHEOSTAT	1
31	99783-001	SWITCH, PUSH-PULL	1
32	99783-002	SWITCH CONTACT	1
33	351095-16	DECAL, FUSES AND TERMINAL BLOCKS	1
34	351112-29	DEEP SEA ELECTRONICS 7310 MKII	1
35	351900-36	RHEOSTAT MOUNTING BRACKET	1
36	351900-42	DIN RAIL MOUNTING PLATE	1
37	351900-44	COVER SUPPORT BRACKET	1
38	351900-45	DSE8610 CONTROL BOX BOTTOM	1
39	351900-47	DSE 7310 MKII FRONT PANEL	1
40	351900-51	PLUG MOUNTING PLATE	1
41	351900-52	DSE CONTROL BOX TOP	1
42	351900-53	DSE PANEL STOP	1
43	352017-001	WIRE DUCT, 8.5IN	2
44	352120-1	1/4-20 X .500 FHCS	2
45	352125-1	1/4-20 RIVET NUT 22 GA-10GA	1
46	479-000	LOCK .25 SPLIT	2
47	512-000	.25 WASHER	2

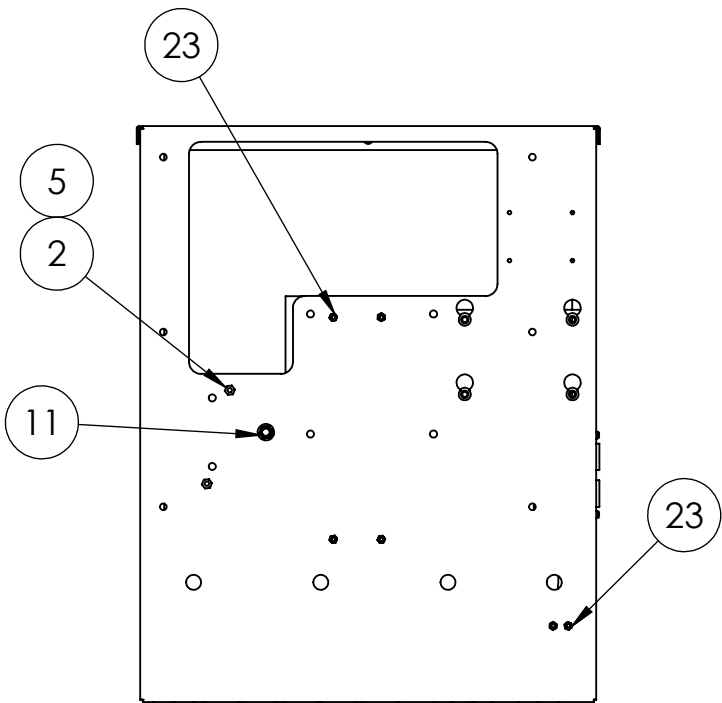
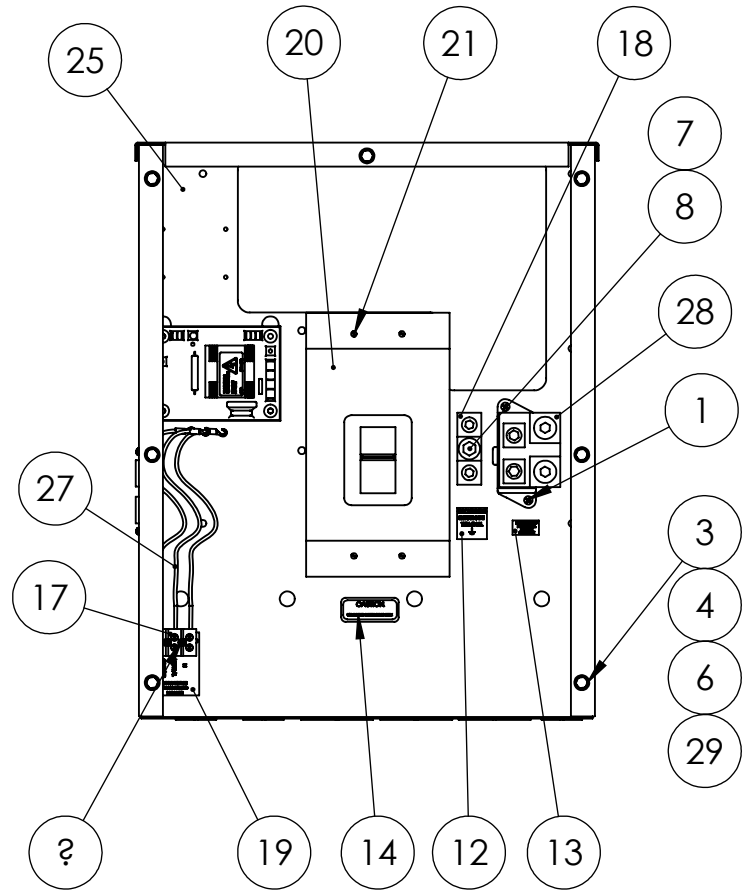
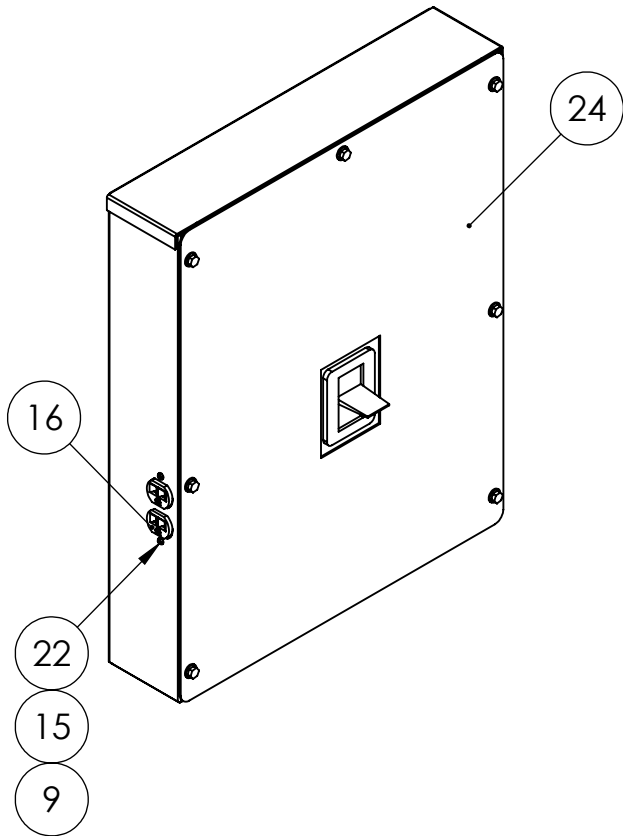
CB Assembly 1-PH



CB Assembly 1-PH Continued

ITEM NO.	PART NUMBER	DESCRIPTION	QTY.
1	439-000	.25-20 X 1 HHB	1
2	456-000	10-24 HEX NUT	2
3	476-000	HHCS .25-20 X .625 GR5 ZINC	7
4	479-000	LOCK .25 SPLIT	7
5	484-000	#10 LOCKWASHER SPLIT	2
6	511-000	WASHER FLAT #8 (.188 ID X .438 OD X .046 THK) GR-LOW CARBON ZINC	6
7	512-000	.25 WASHER	7
8	598-000	WASHER FLAT #10 (.219 ID X .500 OD X .046 THK) GR-LOW CARBON ZINC	2
9	5113-000	NUT HEX # 8	8
10	6376-000	LOCKWASHER #8 SPLIT (.167 ID X .293 OD X .040 THK) ZINC	4
11	9362-000	RHMS 10-24 X 1 ZINC	2
12	10846-000	RHMS 8-32 X 1.5	2
13	16248-000	.25-20 FLANGE NUT	1
14	16499-000	UL-DECAL-GROUNDING-WHITE	1
15	16501-000	DECAL-FLOATING NEUTRAL	1
16	16503-000	DECAL-COPPER CONDUCTORS ONLY	1
17	21976-000	LOCKWASHER #8 (.168-.176 ID X .365-.381 OD X .018-.023 THK) EXTERNAL TOOTH ZINC	4
18	24198-000	BHMS 8-32 X .625	2
19	24749-000	RECEPTACLE NEMA 5-15R DUPLEX	1
20	51795-000	3 PT TERMINAL BLOCK	1
21	58060-000	TERMINAL GROUND LUG	2
22	64576-006	DECAL-GFCI PROTECTED UTILITY	1
23	81094-710	CB, 400A, 2PL, 240V, 80 PERCENT, SQD, Q4L	1
24	92009-000	RHMS 8-32 X 3.5 , ZINC	4
25	99826-294	CB COVER	1
26	99826-492	CB AND RECONNECT BOX	1
27	99830-045	LEAD WIRE GROUP	1
28	300538-23	WIRE HARNESS KIT	1
29	350124-2	NEUTRAL SK400 400 AMP	1
30	352125-1	1/4-20 RIVET NUT 22 GA-10GA	7

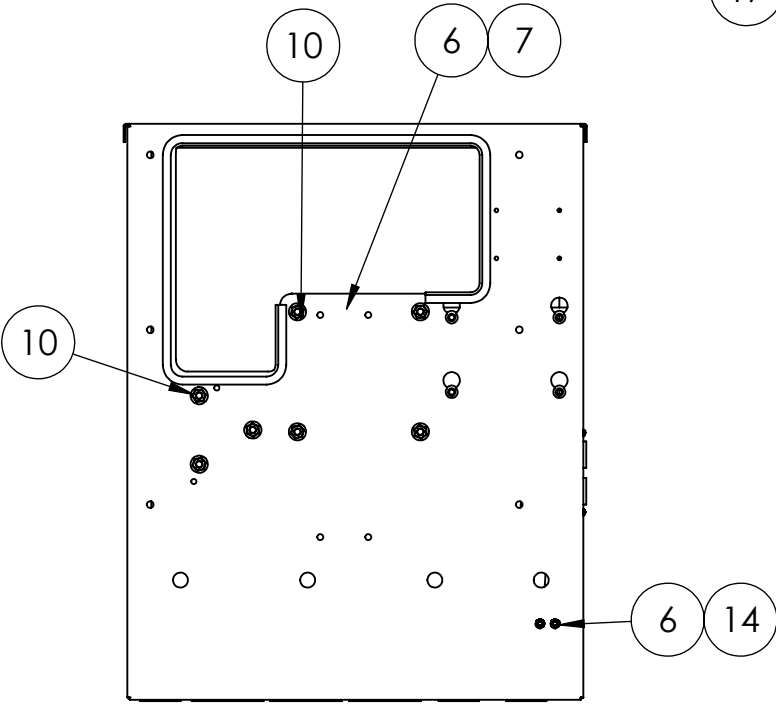
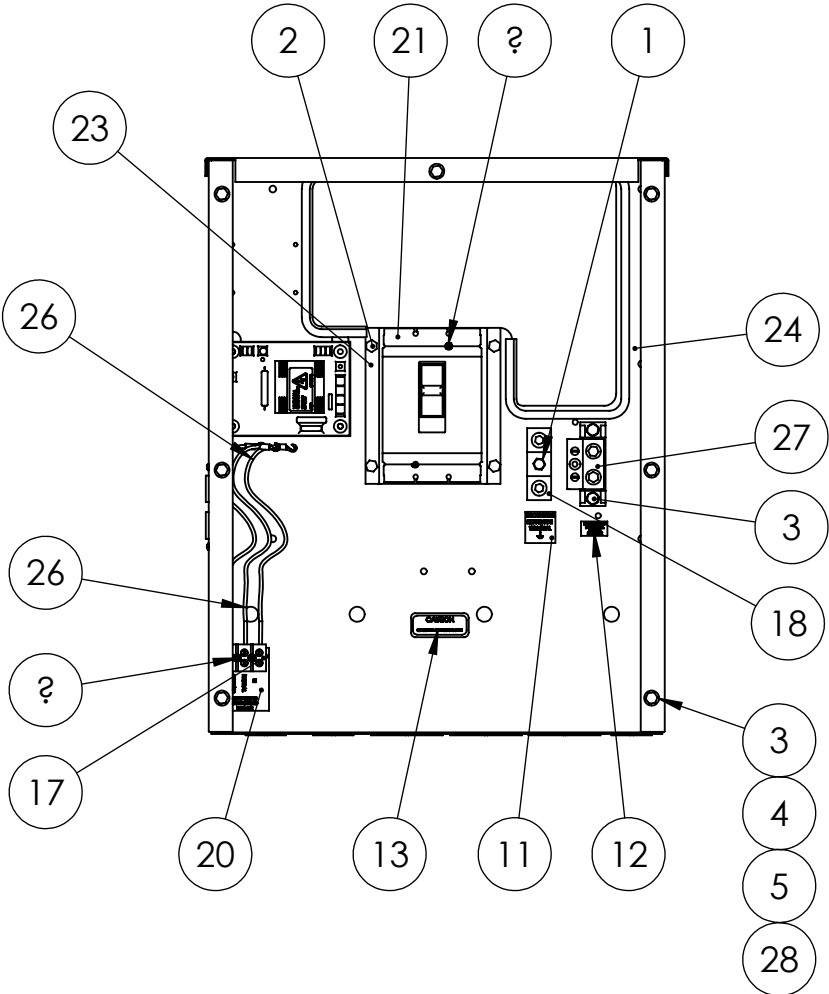
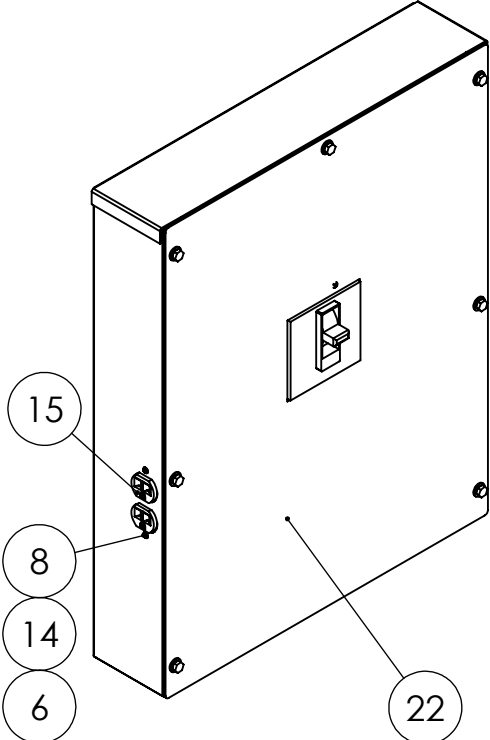
CB Assembly 208/240V 3 PH



CB Assembly 208/240V 3 PH Continued.

ITEM NO.	PART NUMBER	DESCRIPTION	QTY.
1	420-000	RHMS 10-24 X .75	2
2	456-000	10-24 HEX NUT	2
3	476-000	HHCS .25-20 X .625 GR5 ZINC	7
4	479-000	LOCKWASHER .25 SPLIT (.252 ID X .487 OD X .062 THK) ZINC	7
5	484-000	LOCKWASHER #10 SPLIT (.193 ID X .334 OD X .047 THK) ZINC	2
6	512-000	WASHER FLAT .25 (.281 ID X .625 OD X .062 THK) GR-LOW CARBON ZINC	7
7	526-000	5/16 FLAT WASHER	1
8	580-000	HHCS .3125-18 X 1.25 GR5 ZINC	1
9	5113-000	NUT HEX # 8	2
10	10846-000	RHMS 8-32 X 1.5	2
11	16249-000	NUT FLANGE .3125-18 LOCK SERRATED GR5 ZINC	1
12	16499-000	UL-DECAL-GROUNDING-WHITE	1
13	16501-000	DECAL-FLOATING NEUTRAL	1
14	16503-000	DECAL-COPPER CONDUCTORS ONLY	1
15	21976-000	LOCKWASHER #8 (.168-.176 ID X .365-.381 OD X .018-.023 THK) EXTERNAL TOOTH ZINC	2
16	24749-000	RECEPTACLE NEMA 5-15R DUPLEX	1
17	51795-000	3 PT TERMINAL BLOCK	1
18	58060-000	TERMINAL GROUND LUG	2
19	64576-006	DECAL-GFCI PROTECTED UTILITY	1
20	81096-709	CIRCUIT BREAKER 350A 3PL 240V	1
21	92009-000	RHMS 8-32 X 3.5	4
22	94000-000	RHMS 8-32 X 0.5	2
23	95985-000	NUT HEX 8-32 NYLOCK GR2 ZINC	6
24	99826-294	CB COVER	1
25	99826-492	CB AND RECONNECT BOX	1
26	99830-032	CB WIRING PSS90-4	1
27	300538-23	WIRE HARNESS KIT	1
28	350124-2	NEUTRAL SK400 400 AMP	1
29	352125-1	.250-20 .027-.165 RIVET NUT	7

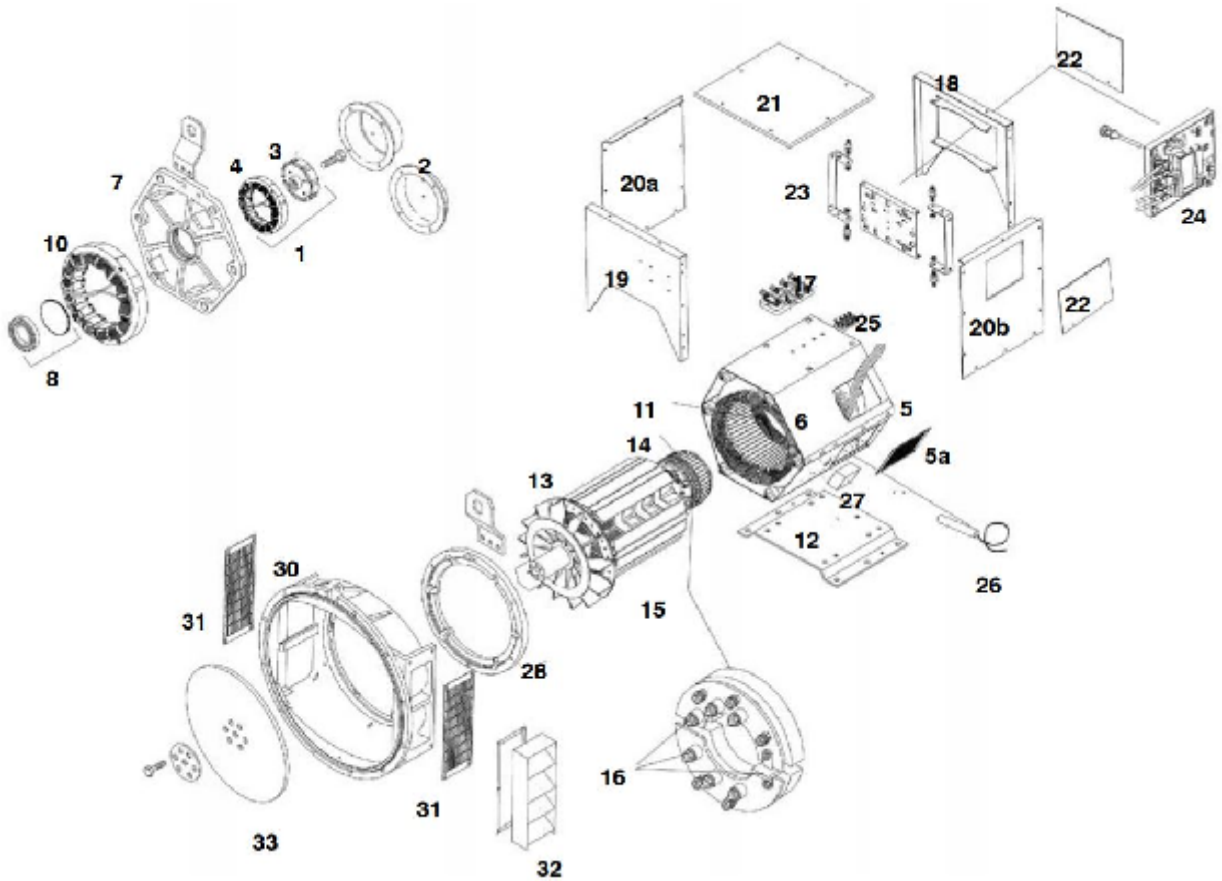
CB Assembly 480V 3 PH



CB Assembly 480V 3 PH Continued.

ITEM NO.	PART NUMBER	DESCRIPTION	QTY.
1	439-000	HHTB .25-20 X 1.00 GR-A ZINC	1
2	463-000	HHCS .25-20 X .50 GR5 ZINC	4
3	476-000	HHCS .25-20 X .625 GR5 ZINC	9
4	479-000	LOCK .25 SPLIT	7
5	512-000	.25 WASHER	7
6	5113-000	NUT HEX # 8	6
7	6376-000	LOCKWASHER #8 SPLIT (.167 ID X .293 OD X .040 THK) ZINC	2
8	6402-000	SCREW 8-32 X .375 BIND.HMS	2
9	10846-000	RHMS 8-32 X 1.5	2
10	16248-000	NUT FLANGE .25-20 LOCK SERRATED GR5 ZINC	7
11	16499-000	UL-DECAL-GROUNDING-WHITE	1
12	16501-000	DECAL-FLOATING NEUTRAL	1
13	16503-000	DECAL-COPPER CONDUCTORS ONLY	1
14	21976-000	LOCKWASHER #8 (.168-.176 ID X .365-.381 OD X .018-.023 THK) EXTERNAL TOOTH ZINC	4
15	24749-000	RECEPTACLE NEMA 5-15R DUPLEX	1
16	44342-000	RHMS 8-32 X 3.0	2
17	51795-000	3 PT TERMINAL BLOCK	1
18	58060-000	TERMINAL GROUND LUG	2
19	58684-036	EDGE TRIM 37 INCH	1
20	64576-006	DECAL-GFCI PROTECTED UTILITY	1
21	81097-036	CIR.BRK.150A-3PL-600V, SQ	1
22	99826-295	CB COVER	1
23	99826-491	CB RISER	1
24	99826-492	CB AND RECONNECT BOX	1
25	99830-034	LEAD WIRE GROUP	1
26	300538-23	WIRE HARNESS KIT	1
27	350124-4	225A NEUTRAL ASSY	1
28	352125-1	1/4-20 RIVET NUT 22 GA-10GA	7

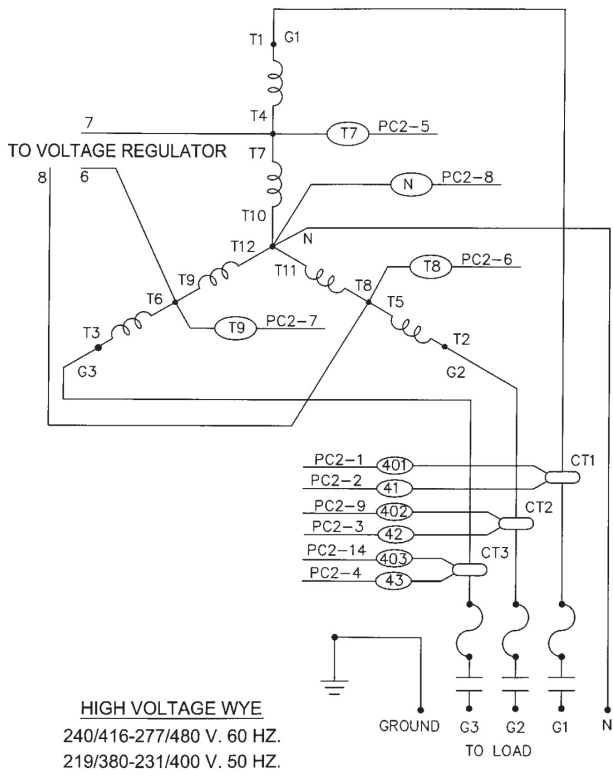
Generator



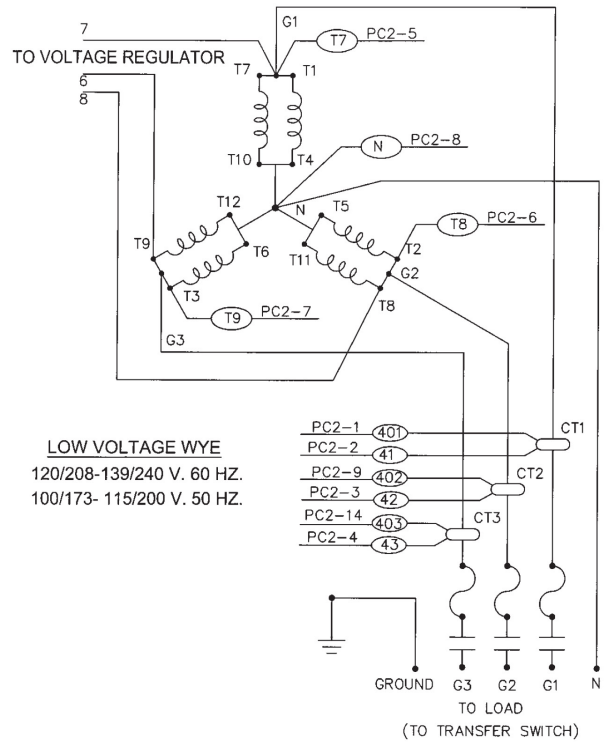
ITEM	DESCRIPTION	PSS100P4-03	PSS100P4-04, -17, -18	QTY
--	COMPLETE GENERATOR END	352013-5	352013-51	1
--	STAMFORD MODEL	UCI274D	UCI274D	--
--	WINDING	06	311	--
24	AVR AS440 UL	350818-2		1
Contact Winco for additional generator parts support.				

Generator Connections

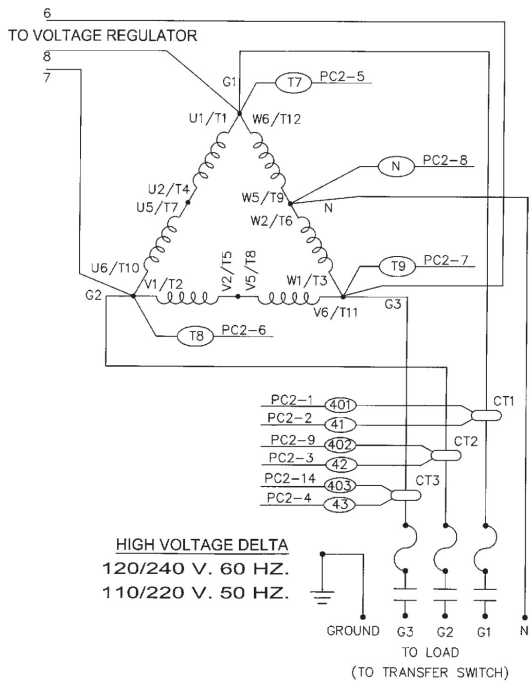
THREE PHASE - HIGH WYE 277/480V



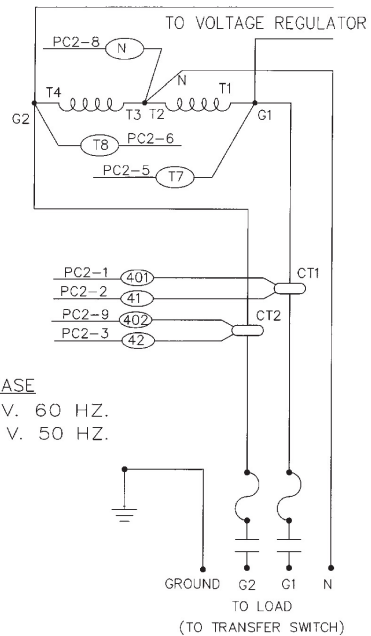
THREE PHASE - LOW WYE 120/208V



THREE PHASE DELTA 120/240V



SINGLE PHASE 120/240V



Generator Control Schematic

Engine Wiring Schematic

