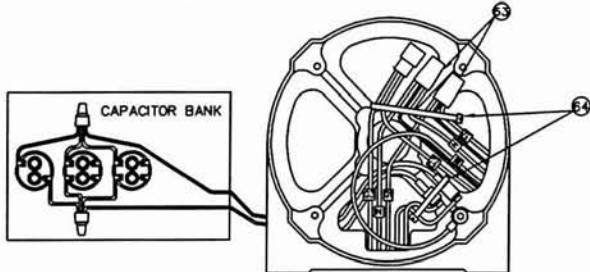
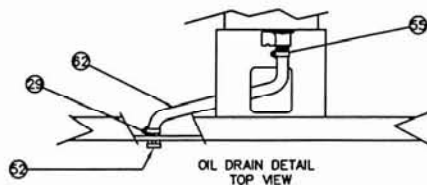
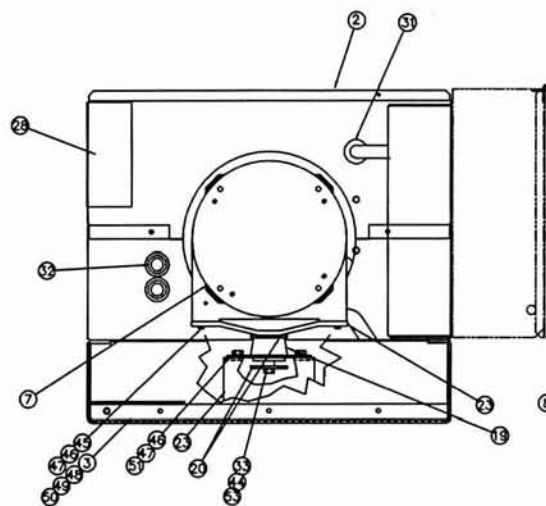


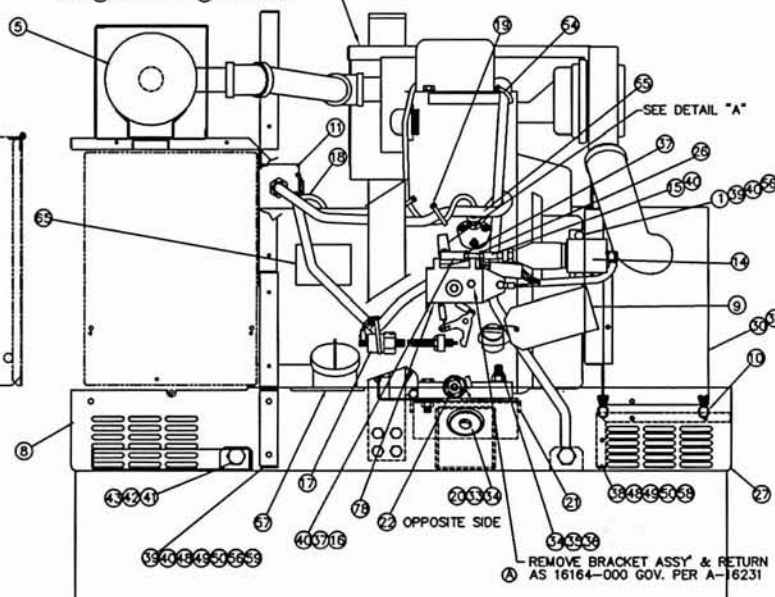
MLS4Y

PARTS LIST

FOR ENGINE WIRING SCHEMATIC SEE B-16064

WIRING DIAGRAM
NO SCALEOIL DRAIN DETAIL
TOP VIEW

79 INSTALL ON LIFTING
YOKE (FAR SIDE) USING
46 47 51 (NUT OUTSIDE).
USE 58 TO FASTEN 79 TOGETHER.

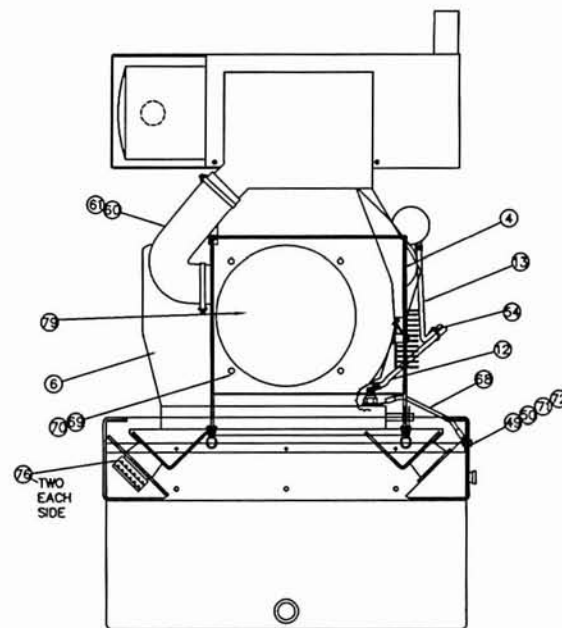


REMOVE BRACKET ASSY & RETURN TO STOCK
AS 16164-000 GOV. PER A-16231

REVISION RECORD					
ISSUE	E.C.O. NO.	DESCRIPTION	DATE	BY	APPR.
9	360-96	(58) WAS -0	10-21-96	D.W.	GR
10	290-97	(10) WAS -0 QTY 5.09, (62) WAS -0 QTY .96 ADDED (77)	11-14-97	D.W.	GR
11		ADDED ITEM 78 AND 79	8-29-98	JK	SV
12	366-98	ADDED ITEM 80	9-21-98	JK	SV
13		ITEM 27 WAS 62493-000	11-20-98	JK	
14		ITEM (65) WAS -0	12-30-98	DW	

NOTES:

1. IF ENGINE IS SUPPLIED WITH A FUEL TANK,
REMOVE IT AND RTS AS 15806-16. IF A
RECOL STARTER IS SUPPLIED, RTS AS 15806-15.

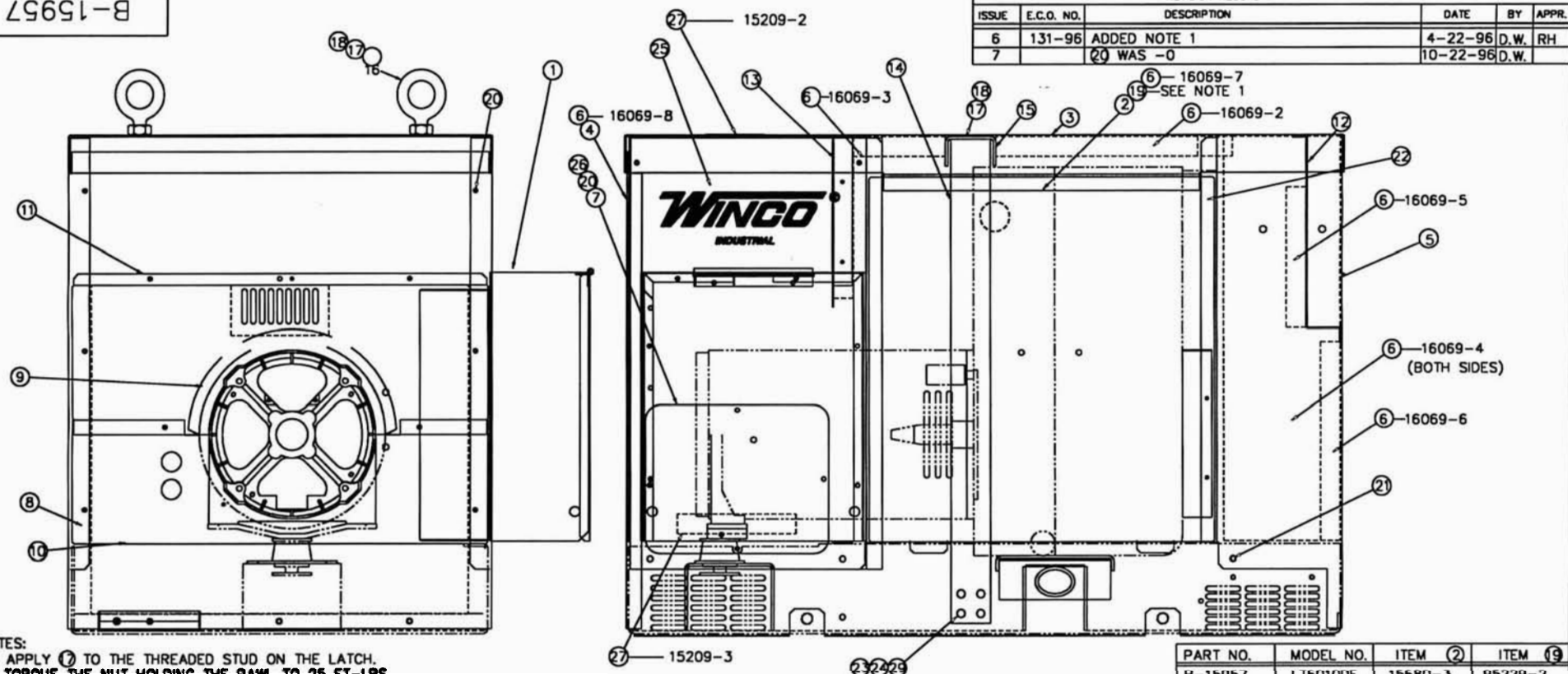


80	15806-019	1	TOOL KIT
79	A-53113-000	1	DECAL
78	A-16231-000	1	GOVERNOR SETUP
77	A-15806-009	1	GASKET
76	A-16141-000	4	MOUNT, REBOUND
75	A-16093-001	1	SHIELD, HEAT
74	A-15806-014	1	AIR CLEANER W/PIPE EXTENSION
73	A-15806-012	1	MUFFLER, REAR OUTLET
72	21975-000	1	LOCKWASHER #10
71	3728-000	1	BHMS #10-24 X 1/2"
70	93341-006	4	LOCKWASHER

ITEM	PART NO	QUAN.	DESCRIPTION
UNLESS OTHERWISE SPECIFIED			
FRACTIONS & ANGULAR SURFACE MACHINED			
1. PLACE DEC. & .031			
2. PLACE DEC. & .005			
3. PLACE DEC. & .005			
ALL DIMENSIONS GIVEN IN INCHES			
WORK TO DIMENSIONS			
- DO NOT SCALE -			
THIS DRAWING CONTAINS PROPRIETARY INFORMATION BELONGING TO WINCOR. UNAUTHORIZED USE IS PROHIBITED.			
DRAWN BY DATE CHKD BY DATE APP'D BY DATE SCALE			
D.M.W. 3- 22-94 R.H. 4/28/94 1=5			
TITLE			
COMPLETE UNIT ASS'Y			
PART NO. C-15953-000			

23	A-15039-001	1	SUPPORT, GENERATOR
22	A-98906-003	1	VALVE, OIL DRAIN
21	B-15930-000	1	WELDMENT, ENGINE MOUNT
20	A-98806-000	4	WASHER
19	A-98807-000	3	SHOCKMOUNT
18	C-16058-000	1	KIT, WIRE HARNESS
17	A-99036-000	1	SWITCH, OIL PRESSURE
16	A-63650-000	1	BALL JOINT
15	A-99035-000	1	SWIVEL, IN LINE
14	B-97302-004	1	SOLENOID, MODIFICATION
13	B-15063-005	1	BATTERY CABLE (+)
12	B-15767-003	1	BATTERY CABLE (-)
11	B-16048-000	1	FUEL, SYSTEM
10	A-15287-004	1	AIR SEAL
9	60710-017	1	TAG, OIL
8	A-15920-000	1	BASE WELDMENT
7	A-15041-022	1	GENERATOR
6	A-15806-000	1	ENGINE
5	B-16049-000	1	EXHAUST SYSTEM
4	B-15934-000	1	ENGINE DUCT
3	A-15950-000	1	BATTERY TRAY
2	C-15957-001	1	SUB ASSY HOUSING (NOT SHOWN FOR CLARITY)
1	A-15786-000	1	GUARD, BLOWER
46	480-000	8	SLW 5/16
45	580-000	2	HHCS 5/16-18 X 1 1/2
44	481-000	1	SLW 3/8
43	636-000	4	SLW 1/2
42	1744-000	4	HN 1/2-13
41	48178-000	4	HHCS 1/2-13 X 1
40	479-000	10	SPLIT LW 1/4
39	638-000	6	HEXNUT 1/4-20
38	21698-001	16	BHMS #10-3/8
37	2448-000	3	HEXNUT 1/4-28
36	526-000	4	FW 3/8
35	A-91658-004	4	HHCS 3/8-16 X 1 3/4
34	56864-000	7	LOCKNUT 3/8-16
33	A-91658-007	5	HHCS 3/8-16 X 2 1/2
32	A-23917-002	2	GROMMET
31	A-23917-001	1	GROMMET
30	A-16051-000	1	WELDMENT, ENGINE DUCT COVER
29	A-92386-001	1	PIPE NIPPLE 1/8 X 3/4
28	B-15759-000	1	CAPACITOR BOX
27	A-62493-003	10.42F	STRIP (BETWEEN BASE & TANK)
26	A-91925-003	1	THREADED ROD
25	A-16064-000	REF	SCHEMATIC, D.C.
24	A-15807-000	1	KIT, BATTERY HOLD DOWN (SHIP LOOSE)
69	75139-012	4	HHCS M6 X 1.00 X 12MM
68	A-9769-148	1	LEADWIRE ASSY
67	60706-121	1	OP MANUAL
66	60701-121	1	RPL
65	A-63966-003	1	NAME PLATE
64	A-49975-011	4	CABLE TIE
63	A-96936-008	2	WIRE NUT
62	55505-006	1	HOSE
61	A-81018-001	2	CLAMP
60	A-16055-001	1	HOSE AIR DUCT
59	A-15942-000	1	DIVIDER, BASE
58	B-15933-000	1	DUCT, AIR
57	A-97381-000	1	DECAL, DIESEL FUEL
56	476-000	6	HHCS 1/4-20 X 5/8
55	A-81018-009	4	CLAMP
54	A-49975-010	4	CABLE TIE
53	A-92914-000	6	HN 3/8-16
52	644-000	1	PIPE PLUG
51	467-000	8	HHCS 5/16-18 X 3/4
50	456-000	5	HN #10-24
49	484-000	5	LW #10-24
48	95568-000	4	THREDDSTUD (INSTALL BEFORE (1))
47	458-000	6	HN 5/16-18

B-15957



NOTES:

1. APPLY (1) TO THE THREADED STUD ON THE LATCH.
TORQUE THE NUT HOLDING THE PAWL TO 25 FT-LBS.

16	A-91137	2	EYE, LIFTING				
15	A-15937	1	TOP, LIFTING YOKE				
14	A-16101	2	WELDMENT, UPRIGHT				
13	B-15952	1	BAFFLE, EXHAUST	29	481	8	SLW 3/8
12	A-15963	1	BAFFLE, FRONT HOUSING	28			
11	B-15944	1	DIVDER, TOP	27	A-15209	1	DECAL SET (DISCARD -1)
10	A-15943	1	DIVDER	26	A-96286-2	4	WASHER, NYLON
9	A-15287	2.34FT.	AIR SEAL	25	A-64214-42	2	DECAL
8	B-15941	1	LEFT REAR PANEL	24	A-92914	8	HN 3/8-16
7	A-15951	1	COVER, BATTERY	23	A-91658-1	8	HHCS 3/8-16 X 1
6	B-16069	1	KIT, FOAM	22	A-62912	11.4FT	STRIP (DOOR GASKET)
5	B-15948	1	HOUSING FRONT	21	A-55440	8	SELF TAPPING SCREW 1/4-20 X 1/2
4	B-15949	1	HOUSING REAR	20	A-21698-2	32	BHMS #10 X 3/8
3	B-15945	1	ROOF	19	SEE TABLE	2	LATCH
2	SEE TABLE	2	DOOR	18	447	2	HN 5/8-11
1	B-16046	1	CONTROL PANEL ASS'Y	17	A-81589	A/R	LOCTITE
ITEM	PART NO	QUAN.	DESCRIPTION	ITEM	PART NO	QUAN	DESCRIPTION

REVISION RECORD					
ISSUE	E.C.O. NO.	DESCRIPTION		DATE	BY APPR.
6	131-96	ADDED NOTE 1		4-22-96	D.W. RH
7		20 WAS -0		10-22-96	D.W.

16	16069-8	13	15209-2	14	16069-3	15	16069-7	16	16069-2	17	16069-5	18	16069-4 (BOTH SIDES)	19	16069-6	20	16069-6	21	16069-6	22	16069-6	23	16069-6	24	16069-6	25	16069-6	26	16069-6	27	16069-6	28	16069-6	29	16069-6
SEE NOTE 1																																			

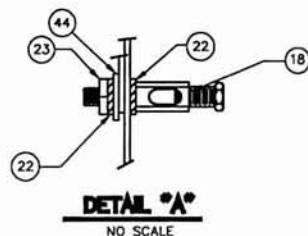
PART NO.	MODEL NO.	ITEM (2)	ITEM (3)
B-15957	LT6010DE	15680-3	95229-2
B-15957-1	LT6010DE	15680-10	95229-4

UNLESS OTHERWISE SPECIFIED		MACHINED SURFACE TEXTURE		ALL DIMENSIONS GIVEN IN INCHES WORK TO DIMENSIONS - DO NOT SCALE -			
FRACTIONS ±		ANGULAR ± 1.5°					
1. PLACE DEC. ± .1							
2. PLACE DEC. ± .015							
3. PLACE DEC. ± .005							
DRAWN BY		DATE	CHKD BY	DATE	APP'D BY	DATE	SCALE
D.M.W.		3-17-94	R.H.	4-7-94	R.H.	4-27-94	1=5
MATERIAL:							
FINISH							
ASS'Y		C-15953					
MODEL		LT6010DE					
THIS DRAWING CONTAINS PROPRIETARY INFORMATION BELONGING TO WINCO. UNAUTHORIZED USE IS PROHIBITED.		TITLE					
		SUB-ASS'Y, HOUSING					
		PART NO.					
		B-15957					

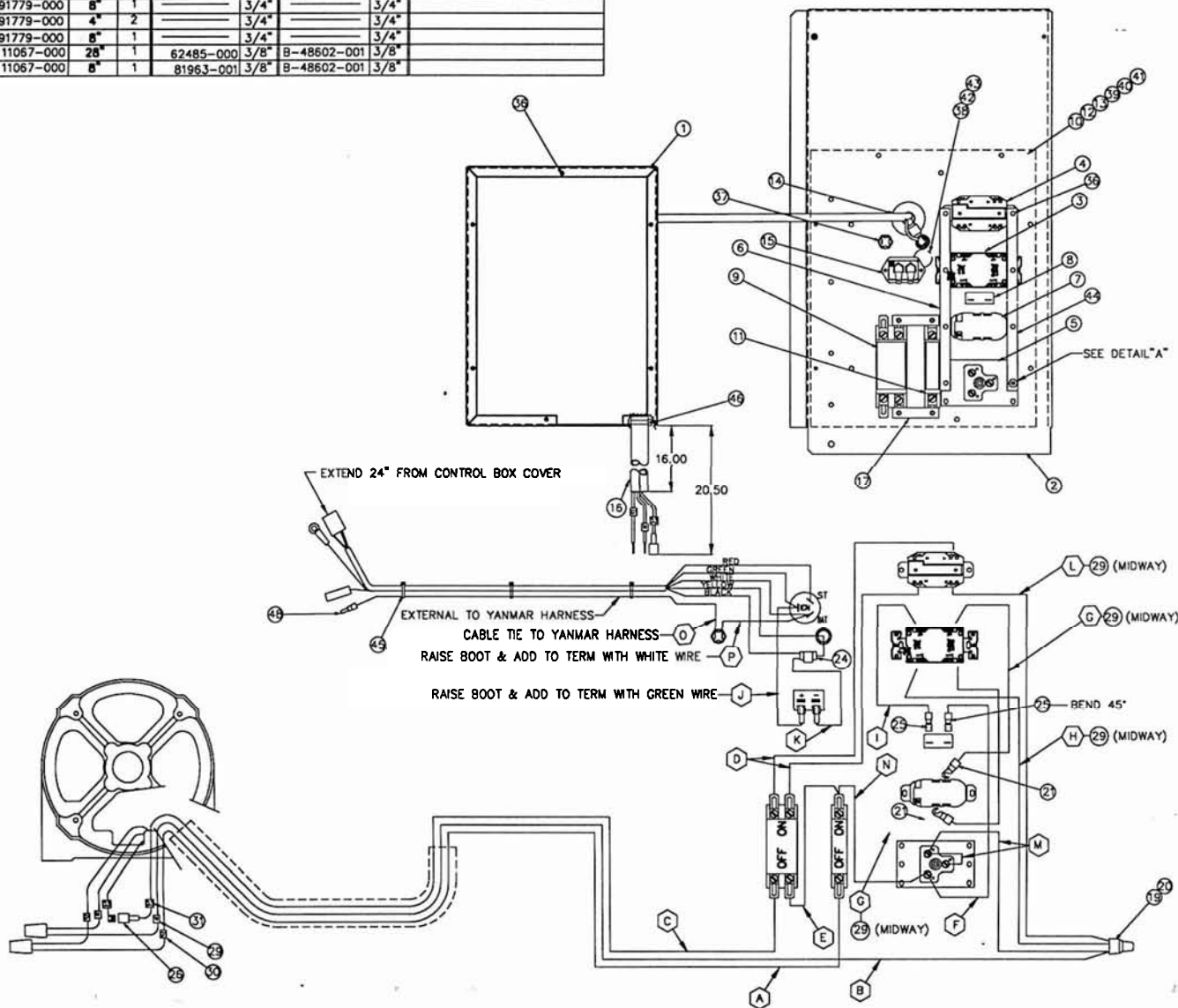
WINCO
INCORPORATED

LEAD WIRE TABLE

ITEM	LEAD WIRE			"A" END		"B" END		REMARKS
Q	PART NO.	LENGTH	QTY.	TERM. LUG	STRIP	TERM. LUG	STRIP	
A	B-91779-000	26"	1		3/4"		3/4"	(5) BOTH ENDS G-1
B	B-91779-000	32"	1		3/4"		3/4"	(2) BOTH ENDS N
C	B-91815-000	26.5"	1	B-48602-004	3/8"		3/4"	(3) BOTH ENDS G-3
D	B-91779-000	10.5"	2		3/4"		3/4"	
E	B-91779-000	11"	1		3/4"		3/4"	
F	B-91779-000	7"	1	B-48602-008	3/8"		3/4"	
G	B-91778-000	6.5"	2	B-21850-011	3/8"		5/8"	
H	B-91779-000	8"	1		3/4"		5/8"	
I	B-91779-000	4"	1		5/8"	B-48602-008	3/8"	
J	B-13459-000	7"	1	81964-000	3/8"	81963-001	3/4"	
K	B-13459-000	7"	1	81964-000	3/8"		3/4"	
L	B-91779-000	8"	1		3/4"		3/4"	
M	B-91779-000	4"	2		3/4"		3/4"	
N	B-91779-000	8"	1		3/4"		3/4"	
O	11067-000	28"	1	62485-000	3/8"	B-48602-001	3/8"	
P	11067-000	8"	1	81963-001	3/8"	B-48602-001	3/8"	



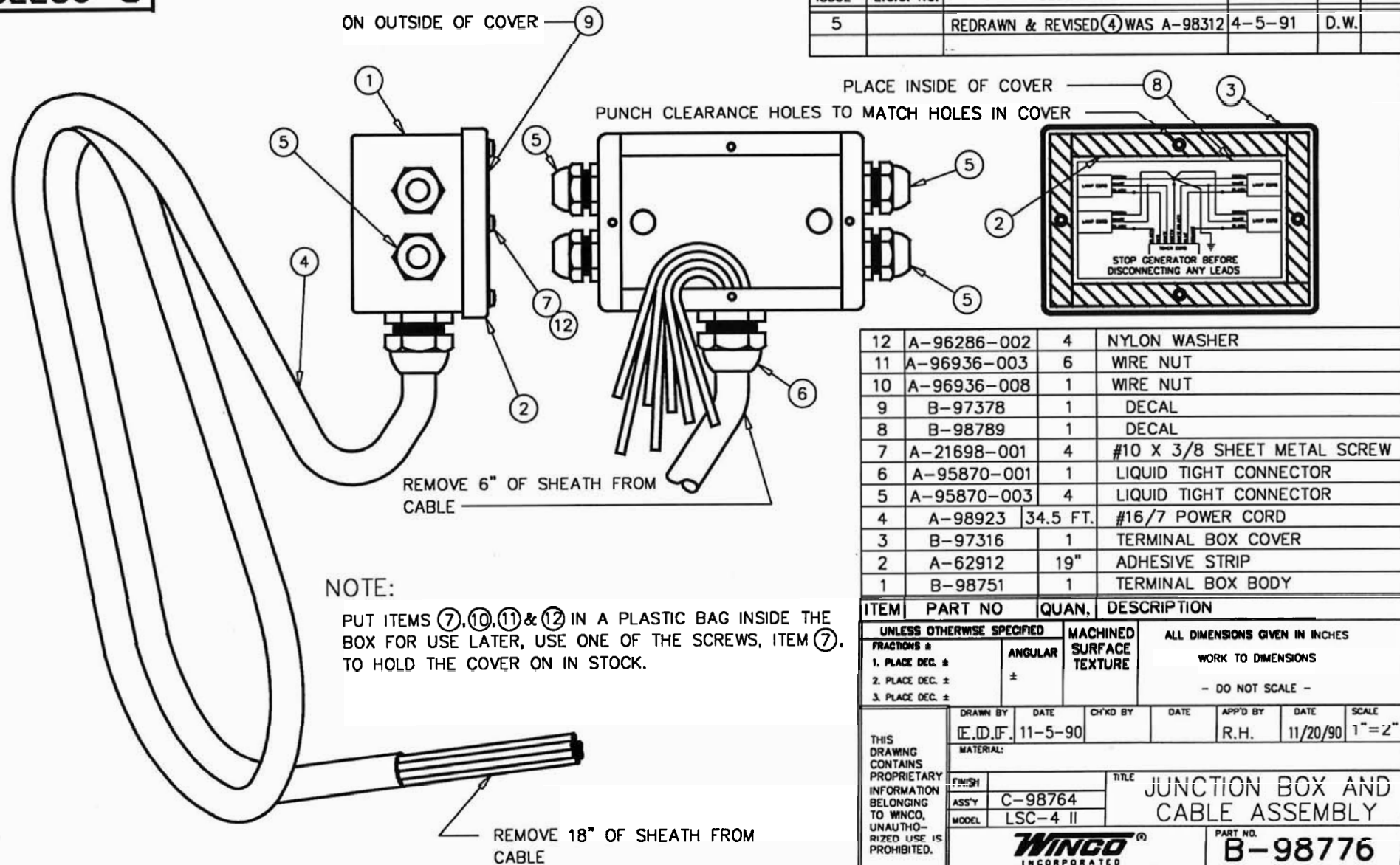
ISSUE	E.C.D. NO.	DESCRIPTION	DATE	BY	APPR.
1		ORIGINAL			
2		(43) WAS 21318	3-30-94	W.	R.H.
3	168-94	DELETED (44) A-23917-1, QTY. 1	5-16-94	C.W.	R.H.
4	NONE	UPDATED PICTORIAL	8-21-98	DW	SM
5	413-98	(2) WAS QTY 6, WIRE 1 "A" END & WIRE 6 & H "B" END WERE STRIP 3/8"	10-15-98	DW	SM
6	348-99	ADDED (2) (43) WAS QTY. 2, (2) 64211, (2) 21976 QTY. 1, (2) 6402-112-14-99 TB	3-15-01	JL	SV
7		(1) WAS 15147-002, (7) WAS 24749-000, (6) WAS 91286-000			



ITEM	PART NO.	QUAN.	DESCRIPTION
49	A-11067-000	1.17FT.	LEAD WIRE
48	62485-000	1	LUG
47	A-48602-001	2	LUG
46	A-49975-011	2	CABLE TIE
45	A-49975-010	3	CABLE TIE
44	B-64045-018	1	GROUND STRAP
43	3884-000	1	R.H.M.S. 1/4-20 X 3/8
42	47517-000	1	ELASTIC STOP NUT 1/4-20
41	5315-000	4	ELASTIC STOP NUT #10-24
40	A-59128-001	4	H.H.M.S. #10-24 X 3/8
39	A-98742-000	1	HINGE
38	A-61660-000	1	RUBBER FOOT
37	A-71444-001	1	PUSH BUTTON
36	A-21698-001	24	B.H.M.S. #10 X 3/8
35	A-13459-000	1.17FT.	LEAD WIRE
34	B-91815-000	2.21FT.	LEAD WIRE
33	B-91778-000	1.09FT.	LEAD WIRE
32	B-91779-000	11.09FT.	LEAD WIRE
31	REF.	2	I.D. TAPE (G3)
30	REF.	2	I.D. TAPE (G1)
29	REF.	6	I.D. TAPE (N)
28	B1963-001	2	TERMINAL LUG
27	B1964-000	2	TERMINAL LUG
26	B-48602-004	1	TERMINAL LUG
25	B-48602-008	2	TERMINAL LUG
24	A-54634-000	1	CONNECTOR
23	456-000	1	#10-24 HEX NUT
22	21975-000	2	#10 INT. TOOTH LOCKWASHER
21	B-21850-011	2	TERMINAL LUG
20	A-51320-000	3	SPLICE INSULATOR
19	A-51319-000	3	SPLICE SLEEVE
18	A-64833-000	1	GROUND LUG
17	B-64045-003	2	GROUNDING STRAP
16	A-62487-003	1.42FT.	WIRE LOOM (17")
15	A-58166-006	1	METER
14	A-15806-010	1	YANMAR HARNESS
13	A-16045-000	1	BOTTOM, COVER
12	B-16030-000	1	SIDE, COVER
11	B-91977-006	1	125 V. CIRCUIT BREAKER
10	B-16029-000	1	DOOR, RECEPTACLE PANEL
9	A-57030-009	1	250 V. CIRCUIT BREAKER
8	B-91286-001	1	20 A. CIRCUIT BREAKER
7	A-50766-000	1	20 A. 125 V. DUPLEX
6	B-64045-001	1	GROUND STRAP
5	A-54545-000	1	50 A. 125 V. RECEPTACLE
4	A-97360-000	1	250 V. RECEPTACLE
3	B-15147-001	1	20 A. 125 V. GFCI DUPLEX
2	B-15925-000	1	RIGHT REAR PANEL
1	B-15940-000	1	COVER, CONTROL BOX

ITEM	PART NO.	QUAN.	DESCRIPTION
UNLESS OTHERWISE SPECIFIED			
FRACTIONS #			
1. PLACE DEC. #	.1	ANGULAR	MACHINED SURFACE TEXTURE
2. PLACE DEC. #	.015		
3. PLACE DEC. #	.005		
ALL DIMENSIONS GIVEN IN INCHES			
WORK TO DIMENSIONS			
- DO NOT SCALE -			
THIS DRAWING CONTAINS PROPRIETARY INFORMATION BELONGING TO WINCO. UNAUTHORIZED REPRODUCED OR USED IS PROHIBITED.		DRAWN BY: D.M.W. DATE: 3-11-94 CHECKED BY: R.H. DATE: 3/17/94 APPROVED BY: R.H. DATE: 4/27/94 SCALE: 1"=4"	
MATERIAL: C-15953-000		FINISH: YL60100E	
CONTROL PANEL ASSEMBLY		PART NO. C-16046-000	


B-98776



REVISION RECORD

ISSUE	E.C.O. NO.	DESCRIPTION	DATE	BY	APPR.
5		REDRAWN & REVISED (4) WAS A-98312	4-5-91	D.W.	

12	A-96286-002	4	NYLON WASHER
11	A-96936-003	6	WIRE NUT
10	A-96936-008	1	WIRE NUT
9	B-97378	1	DECAL
8	B-98789	1	DECAL
7	A-21698-001	4	#10 X 3/8 SHEET METAL SCREW
6	A-95870-001	1	LIQUID TIGHT CONNECTOR
5	A-95870-003	4	LIQUID TIGHT CONNECTOR
4	A-98923	34.5 FT.	#16/7 POWER CORD
3	B-97316	1	TERMINAL BOX COVER
2	A-62912	19"	ADHESIVE STRIP
1	B-98751	1	TERMINAL BOX BODY

ITEM	PART NO	QUAN.	DESCRIPTION				
UNLESS OTHERWISE SPECIFIED		MACHINED SURFACE TEXTURE	ALL DIMENSIONS GIVEN IN INCHES WORK TO DIMENSIONS - DO NOT SCALE -				
FRACTIONS ±							
1. PLACE DEC. ±	ANGULAR ±						
2. PLACE DEC. ±							
3. PLACE DEC. ±							
THIS DRAWING CONTAINS PROPRIETARY INFORMATION BELONGING TO WINCO. UNAUTHO- RIZED USE IS PROHIBITED.	DRAWN BY	DATE	CHK'D BY	DATE	APP'D BY	DATE	SCALE
	E.D.F.	11-5-90			R.H.	11/20/90	1"=2"
	MATERIAL:						
	FINISH			TITLE JUNCTION BOX AND CABLE ASSEMBLY			
	ASS'Y	C-98764					
	MODEL	LSC-4 II					
				PART NO. B-98776			

THIS
DRAWING
CONTAINS
PROPRIETARY
INFORMATION
BELONGING
TO WINCO.
UNAUTHO-
RIZED USE IS
PROHIBITED.

WINCO
INCORPORATED

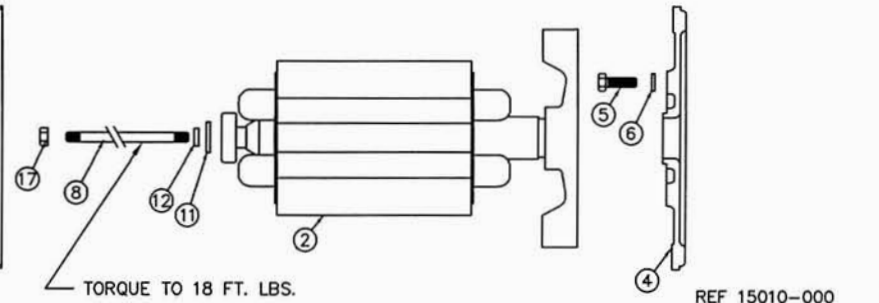
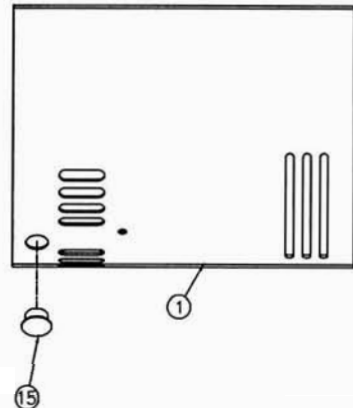
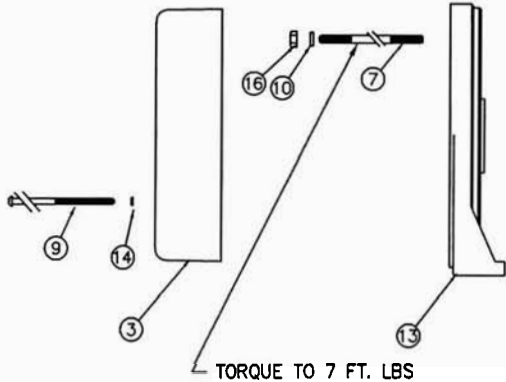
REVISION RECORD						
ISSUE	E.C.O. NO.	DESCRIPTION	DATE	BY	APPR.	
18		ADDED -31	4-25-00	T.B.	SV	
19	124-00	ITEM (1) OF 15041-031 WAS -001	6-20-00	BN	SV	
20		DELETED (18)	1-15-01	BN		

20	CAPACITOR BOX ASSY	1	----	----	----	----	----	----	----	----	----	----	----	----	----	15759-000
19	CAPACITOR (SHIP LOOSE)	2	----	----	----	----	----	----	----	----	----	----	----	----	----	
18																
17	HEX NUT 5/16-24	1	15193	15193	15193-000	15193-000	15193-000	15193-000	15193-000	15193-000	15193-000	15193-000	15193-000	15193-000	15193-000	
16	HEX NUT 1/4-20	4	15192	15192	15192-000	15192-000	----	15192-000	15192-000	15192-000	15192-000	15192-000	15192-000	15192-000	15192-000	
15	HOLE PLUG	1	----	----	----	----	15102-001	----	----	----	----	----	----	15102-001	----	
14	LOCKWASHER	4	21975	21975	21975-000	21975-000	21975-000	21975-000	21975-000	21975-000	21975-000	21975-000	21975-000	21975-000	21975-000	
13	BEARING BRKT.	1	15015-2	15015-2	15015-006	15015-006	15015-001	15015-006	15015-001	15015-006	15015-006	15015-006	15015-006	15015-001	15577-003	15577-003
12	LOCKWASHER	1	480-1	480-1	480-001	480-001	480-001	480-001	480-001	480-001	480-001	480-001	480-001	480-001	480-001	
11	WASHER	1	23558	23558	23558-000	23558-000	23558-000	23558-000	23558-000	23558-000	23558-000	23558-000	23558-000	23558-000	23558-000	
10	LOCKWASHER	4	479	479	479-000	479-000	479-000	479-000	479-000	479-000	479-000	479-000	479-000	479-000	479-000	
9	SCREW	4	15013-1	15013-1	15013-001	15013-001	15013-000	15013-001	15013-000	15013-000	15013-001	15013-001	15013-001	15013-000	15013-000	
8	BOLT/STUD 5/16-24	1	23197-28	23197-28	23197-028	23197-028	23197-005	23197-026	23197-009	23197-009	23197-028	23197-028	23197-028	23197-007	23197-033	23197-036
7	BOLT/STUD 1/4-20	4	15068-10	15068-10	15068-010	15068-010	15530-002	15068-009	15068-008	15068-008	15068-010	15068-010	15068-010	15068-010	15530-002	15068-010
6	LOCKWASHER	4	481	481	481-000	481-000	480-000	97436-008	481-000	97436-008	481-000	481-000	481-000	480-000	97436-008	97436-008
5	H.H.C.S.	4	91658-3	91658-3	91658-003	91658-003	91547-000	96002-040	91658-003	96002-040	91658-003	91658-003	91658-003	91547-000	96002-040	96002-040
4	ENGINE BRKT.	1	15008-1	15008-1	15008-000	15008-000	15053-001	15008-000	15008-001	15008-000	15008-000	15008-000	15008-000	15008-000	15053-001	15008-000
3	END COVER ASSY.	1	15089	15089	15089-000	15089-000	15087-001	15085-000	15086-000	15086-000	15085-000	15089-000	15085-000	15085-000	15596-001	----
2	ROTOR ASSY.	1	15045-9	15045-9	15045-009	15045-009	15045-003	15045-011	15045-005	15045-007	15045-009	15045-009	15045-009	15045-003	16207-000	16207-001
1	STATOR ASSY.	1	15091-8	15091-8	15091-006	15091-009	15093-000	15091-011	15091-010	15857-000	15091-006	15091-012	15091-013	15857-001	15093-000	15857-000
ITEM DESCRIPTION		QTY.														
FULL POWER (REF.)			NO	NO	NO	NO	NO	YES	YES	YES	NO	NO	NO	NO	YES	NO
KW (REF.) (ENG-GEN SET)			8.0	8.0	8.0	8.0	3.0	5.5	3.2	5.5	8.0	7.5	6.5	8.0	3.0	8.0
MODEL (REF.)			HP9000	DX/TF9000	HP9000	LLC/TF9000	HD3200	HD6000	TF3500E-52	EC6010DR	HD9000	TF7500VE-52	PSS6500-52	PSS8000	WT3000H/A	G6000
PART NO.			15041-17	15041-18	15041-019	15041-020	15041-021	15041-022	15041-023	15041-024	15041-025	15041-026	15041-027	15041-028	15041-029	15041-030

msy Gen ↗

UNLESS OTHERWISE SPECIFIED		MACHINED SURFACE TEXTURE		ALL DIMENSIONS GIVEN IN INCHES	
FRACTIONS +		ANGULAR		WORK TO DIMENSIONS	
1. PLACE DEC. ± .1		± 1.5°		- DO NOT SCALE -	
2. PLACE DEC. ± .031					
3. PLACE DEC. ± .005					
THIS DRAWING CONTAINS PROPRIETARY INFORMATION BELONGING TO WINCO. UNAUTHORIZED USE IS PROHIBITED.	DRAWN BY	DATE	CHKD BY	DATE	APPD BY
	C.A.M.	5-23-91	L.L.R.	5-30-91	L.L.R.
	SCALE 1=1				
	MATERIAL:				
	FINISH	TITLE			
	ASSY	GENERATOR PARTS			
	MODEL	170 FRAME			
		WINCO INCORPORATED		PART NO. B-15041-XXX	
				SHEET 2 OF 3	

PART NO.			15041-001	15041-002	15041-003	15041-004	15041-005	15041-006	15041-007	15041-008	15041-009	15041-010	15041-011	15041-012	15041-013	15041-014	15041-015	15041-016
MODEL (REF)			DX2000LT	DP2000	DP3000	DM4500/L DP4500/L DP4500E/L	DX4500 TF4500	DP6000E DL6000IE	DX6000 TF6000	DX9000 TF9000	DX3300	EC6000E	HP3300	HP5000 HP4500	HP6000	HP4000	DM4500/M DP4500/M DP4500E/M	HP9000
KW (REF)(ENG-GEN SET)			3.0	1.8	3.0	4.0	4.0	5.5	5.5	8.0	3.0	5.5	3.0	4.0	5.5	4.0	4.0	8.0
FULL POWER (REF)			NO	NO	NO	NO	YES	NO	YES	NO	NO	NO	NO	YES	YES	NO	NO	NO
ITEM	DESCRIPTION	QTY																
1	STATOR ASS'Y	1	15093-002	15093-000	15093-000	15042-004	15091-005	15042-005	15091-007	15091-008	15093-000	15042-006	15093-000	15091-005	15091-007	15093-001	15042-010	15091-008
2	ROTOR ASS'Y	1	15045-003	15045-003	15045-003	15045-004	15045-005	15045-007	15045-006	15045-008	15045-003	15045-007	15045-003	15045-005	15045-006	15045-010	15045-010	15045-008
3	END COVER ASS'Y	1	15112-000	15119-000	15087-000	15049-000	15086-000	16342-000	15085-000	15085-000	15112-000	15086-000	15113-000	15114-000	15089-000	15113-000	15049-000	15089-000
4	ENGINE BRKT	1	15053-001	15053-001	15053-001	15008-001	15008-001	15008-001	15008-001	15008-001	15053-001	15008-001	15053-001	15008-001	15008-001	15008-001	15008-001	15008-001
5	HHCS	4	91547-000	91547-000	55576-000	91658-003	91658-003	91658-003	91658-003	91658-003	55576-000	91658-003	91547-000	91658-003	91658-003	91658-003	91658-003	91658-003
6	LOCKWASHER	4	480-000	480-000	480-000	481-000	481-000	481-000	481-000	481-000	480-000	481-000	480-000	481-000	481-000	481-000	481-000	481-000
7	BOLT/STUD 1/4-20	4	15530-002	15530-002	15009-004	15009-001	15068-008	15068-008	15068-009	15068-010	15009-004	15068-008	15530-002	15068-008	15068-009	15009-001	15009-001	15068-010
8	BOLT/STUD 5/16-24	1	23197-007	23197-007	23197-007	15011-003	23197-009	23197-009	23197-026	23197-028	23197-007	23197-009	23197-005	23197-005	23197-026	15011-003	15011-003	23197-028
9	SCREW	4	15013-000	15013-000	15013-000	15013-000	15013-000	15013-000	15013-001	15013-001	15013-001	15013-001	15013-000	15013-000	15013-000	15013-000	15013-000	15013-001
10	LOCKWASHER	4	479-000	479-000	479-000	479-000	479-000	479-000	479-000	479-000	479-000	479-000	479-000	479-000	479-000	479-000	479-000	479-000
11	WASHER	1	23558-000	23558-000	23558-000	23558-000	23558-000	23558-000	23558-000	23558-000	23558-000	23558-000	23558-000	23558-000	23558-000	23558-000	23558-000	23558-000
12	LOCKWASHER	1	480-001	480-001	480-001	480-001	480-001	480-001	480-001	480-001	480-001	480-001	480-001	480-001	480-001	480-001	480-001	480-001
13	BRG BRACKET	1	15015-001	15015-001	15015-001	15015-001	15015-001	15015-002	15015-001	15015-001	15015-001	15015-006	15015-001	15015-001	15015-001	15015-001	15015-001	15015-001
14	LOCKWASHER	4	21975-000	21975-000	21975-000	21975-000	21975-000	21975-000	21975-000	21975-000	21975-000	21975-000	21975-000	21975-000	21975-000	21975-000	21975-000	21975-000
15	HOLE PLUG	1	-----	15102-001	15102-001	-----	-----	15102-001	-----	-----	-----	-----	-----	-----	-----	-----	-----	-----
16	NUT 1/4-20	4	-----	-----	-----	-----	15192-000	15192-000	15192-000	15192-000	-----	15192-000	-----	15192-000	-----	-----	-----	15192-000
17	NUT 5/16-24	1	15193-000	15193-000	15193-000	-----	15193-000	15193-000	15193-000	15193-000	15193-000	15193-000	15193-000	15193-000	15193-000	-----	-----	15193-000
18																		

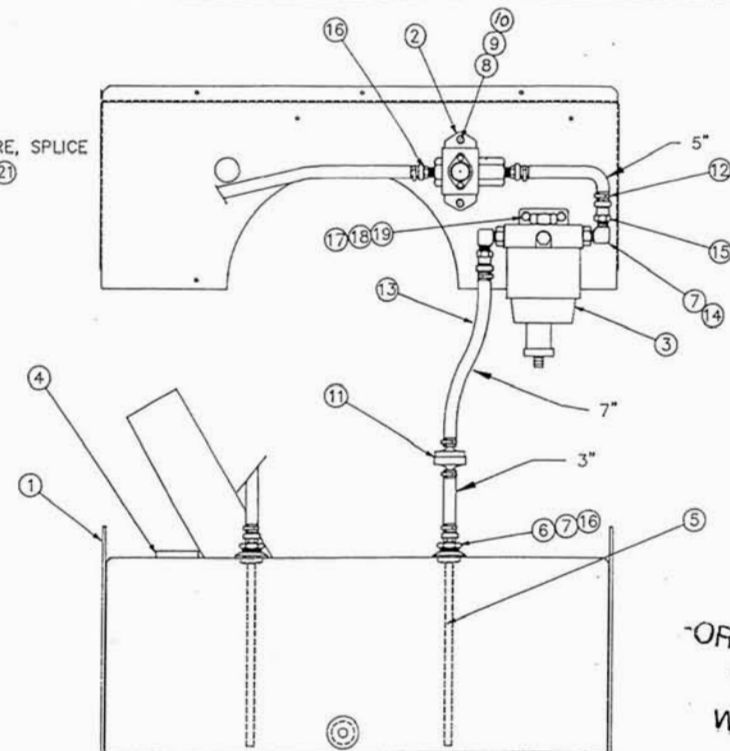
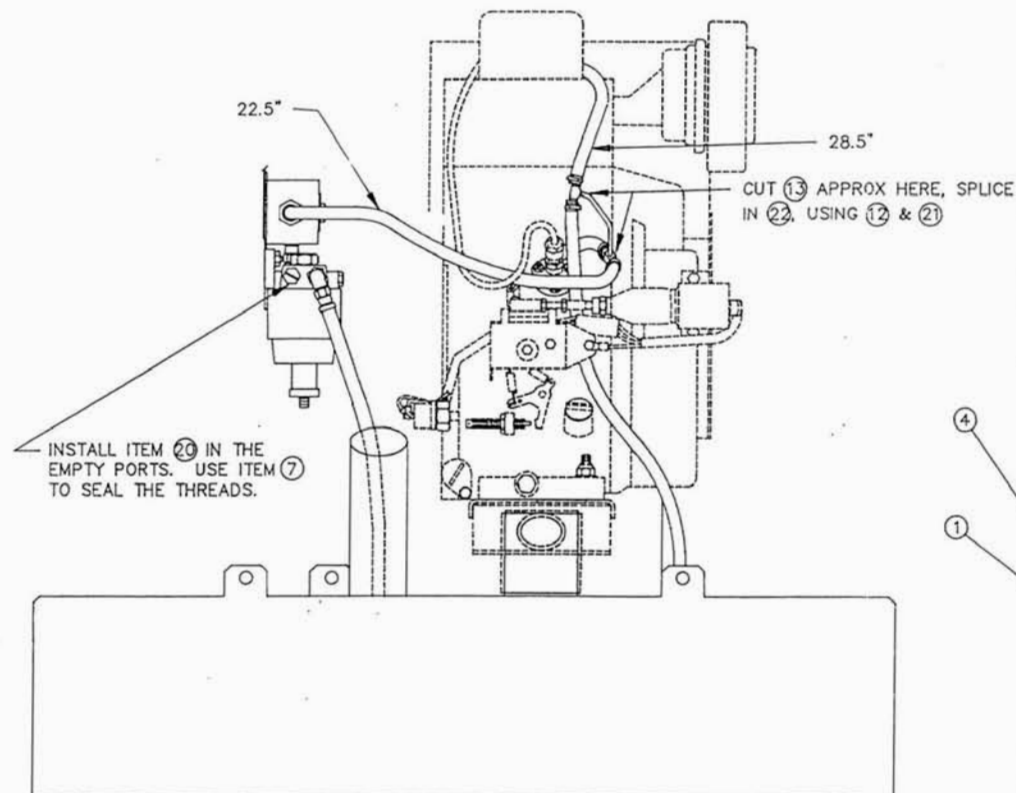


- NOTES:
1. SCHEMATIC DIAGRAM FOR -1 (B-15266-003)
 2. SCHEMATIC DIAGRAM FOR -9, -11, -14 (B-15266-001)
 3. SCHEMATIC DIAGRAM FOR -5, -7, -8, -10, -12, -13, -16 (B-15266-002)
 4. SCHEMATIC DIAGRAM FOR -4, -6, -15 (B-15116-000)
 5. SCHEMATIC DIAGRAM FOR -3 (B-15135-000)
 6. SCHEMATIC DIAGRAM FOR -2 (B-15134-000)

28		-006, ITEM 3 WAS 15109-000; ITEM 13 WAS 15015-006.	2/1/03	RH	
27	021-01	DELETED (18)	1-15-01	BN	SV
26	277-99	ON -11 (8) WAS -7	9-20-99	D.W.	SV
25	NO C/N	REDRAWN ON CAD WAS "C" SIZE	3-21-96	D.W.	GR
ISSUE	E.C.O. NO.	DESCRIPTION	DATE	BY	APPR.
REVISION RECORD					

UNLESS OTHERWISE SPECIFIED		MACHINED SURFACE TEXTURE		ALL DIMENSIONS GIVEN IN INCHES	
FRACTIONS ±		ANGULAR ± 1.5°		WORK TO DIMENSIONS	
1. PLACE DEC. ± .1				- DO NOT SCALE -	
2. PLACE DEC. ± .03					
3. PLACE DEC. ± .005					
DRAWN BY	DATE	CHK'D BY	DATE	APP'D BY	SCALE
D.M.W.	3-21-96				1=4
MATERIAL:					
FINISH		TITLE			
ASS'Y		GENERATOR PARTS			
MODEL 170 FRAME					
THIS DRAWING CONTAINS PROPRIETARY INFORMATION BELONGING TO WINCO, UNAUTHORIZED USE IS PROHIBITED.		WINCO INCORPORATED		PART NO. B-15041-XXX SHEET 1 OF 3	


REVISION RECORD				
ISSUE	E.C.O. NO.	DESCRIPTION	DATE	BY APPR.
5	65-95	ADDED (21) & (22)	2-3-95	D.W.



RELEASED
FOR PRODUCTION
MAR 19 1996
WINCO INC

13	A-40078	5.50FT	HOSE	1/4 I.D.
12	B-62999-1	10	HOSE CLAMP	
11	A-62496	1	FUEL FILTER	
10	479	2	SLW	1/4
9	638	2	HN	1/4-20
8	463	2	HHCS	1/4-20 X 1/2
7	91257	AS REQD	PERMATEX	
6	A-99229	2	ADAPTER TUBE	
5	A-16044	2	WITHDRAWAL TUBE	
4	A-99123	1	GAUGE, FUEL	
3	B-97303	1	FUEL FILTER	
2	A-16063	1	MODIFICATION, FUEL PUMP	
1	B-15926	1	WELDMENT, FUEL TANK	
ITEM	PART NO	QUAN.	DESCRIPTION	

22	A-16132	.42FT	TUBING, TEFLON (5")
21	A-16131	2	TEE, UNION
20	96040-3	2	PIPE PLUG, 1/4"NPT
19	480	2	SLW 5/16
18	458	2	HN 5/16-18
17	465	2	HHCS 5/16-18 X 7/8
16	A-94319-3	4	HOSE, FITTING
15	A-72300-3	2	HOSE FITTING (SWIVEL)
14	A-97571-5	2	ADAPTER
ITEM	PART NO	QUAN.	DESCRIPTION

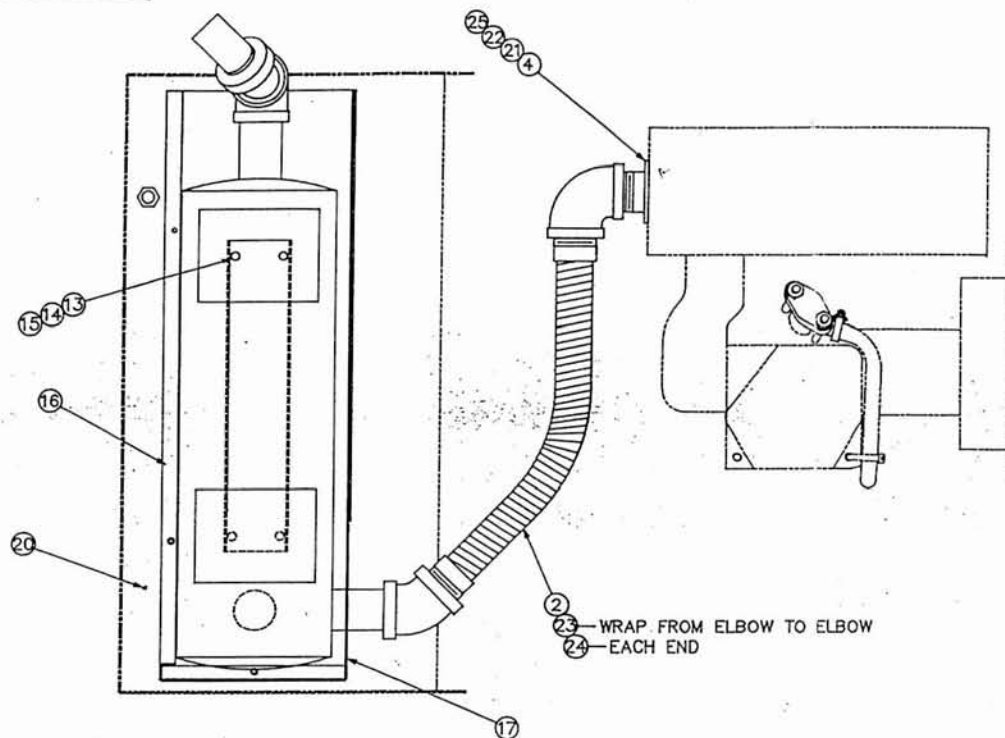
UNLESS OTHERWISE SPECIFIED		MACHINED SURFACE TEXTURE		ALL DIMENSIONS GIVEN IN INCHES			
FRACTIONS ±		ANGULAR		WORK TO DIMENSIONS			
1. PLACE DEC. ± .1		± 1.5°		- DO NOT SCALE -			
2. PLACE DEC. ± .015							
3. PLACE DEC. ± .005							
THIS DRAWING CONTAINS PROPRIETARY INFORMATION BELONGING TO WINCO, UNAUTHORIZED USE IS PROHIBITED.	DRAWN BY	DATE	CHK'D BY	DATE	APP'D BY	DATE	SCALE
	D.M.W.	3-18-94			R.H.	4/27/94	1=5
	MATERIAL:						
	FINISH			TITLE			
	ASS'Y			FUEL SYSTEM			
MODEL			LT6010DE				
				PART NO.			
				B-16048			

THIS DRAWING CONTAINS PROPRIETARY INFORMATION BELONGING TO WINCO. UNAUTHORIZED USE IS PROHIBITED.

B-16049

REVISION RECORD

ISSUE	E.C.O. NO.	DESCRIPTION	DATE	BY	APPR.
1	----	ORIGINAL	-----	---	---
2		(21) WAS QTY 1, (22) WAS QTY 5	4-21-94	D.W.	R.H.
3	202-94	ADDED (23) & (24)	7-18-94	C.M.	R.H.
4	228-94	ADDED (25)	8-3-94	C.M.	SO



23 WRAP FROM ELBOW TO ELBOW
24 EACH END

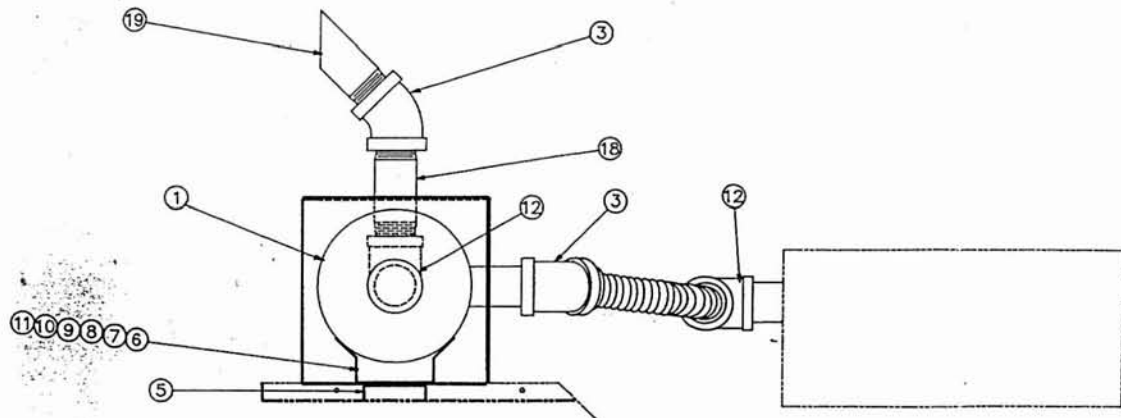
25	15806-18	1	GASKET, EXHAUST
24	A-94259-1	2'	WIRE, SAFETY
23	A-97274	12'	TAPE, HIGH TEMP.
22	A-97436-8	2	SLW M8
21	A-96002-25	2	HHCS M8-1.25 X 25MM
20	21698	5	MACHINE SCREW #10
19	A-98467-1	1	TAIL PIPE
18	A-81079-3	1	PIPE NIPPLE
17	B-15749-1	1	COVER, HEAT SHIELD
16	B-15687-1	1	HEAT SHIELD
15	479	4	SLW 1/4
14	638	4	HN 1/4-20
13	439	4	HHCS 1/4-20 X 1
12	A-24363	2	ELBOW, 1" NPT X 90°
11	526	2	FW 5/16
10	480	2	SLW 5/16
9	458	2	HN 5/16-18
8	1116	2	HHCS 5/16-18 X 1
7	A-99014	2	STRAP, MUFFLER MTG.
6	A-99015	2	BRACKET, MUFFLER MTG.
5	A-15785	1	SPACER, MUFFLER
4	A-16052	1	ADAPTER, ENGINE EXHAUST
3	A-23996	2	ELBOW-45° 1" NPT
2	A-16050	1	FLEX EXHAUST
1	A-97408-704	1	MUFFLER

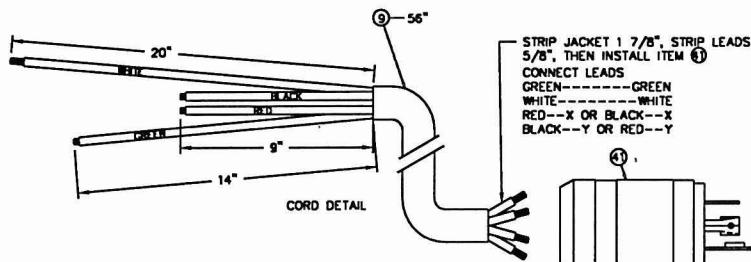
RELEASED
FOR PRODUCTION

JUL 06 1995

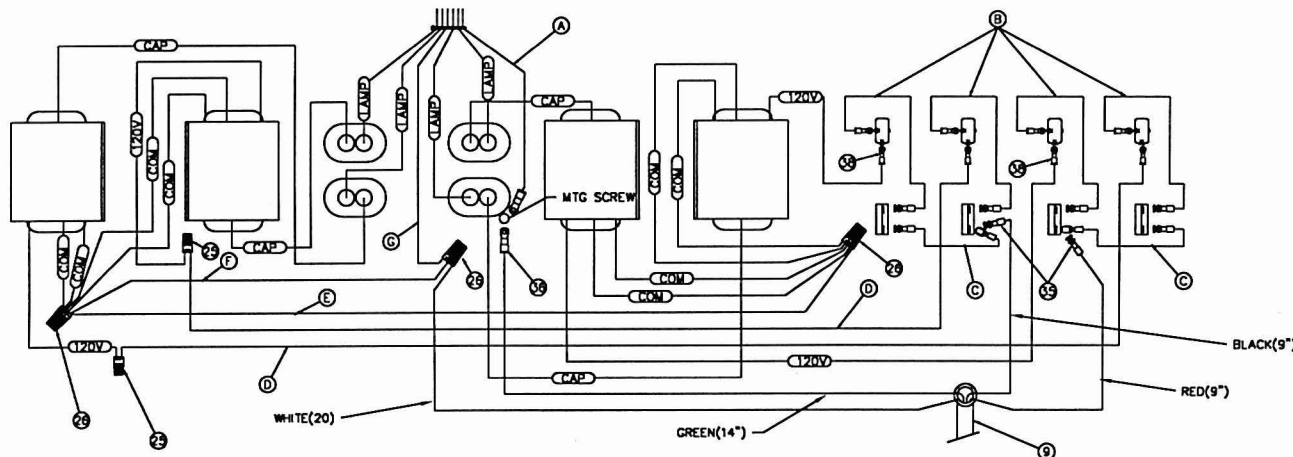
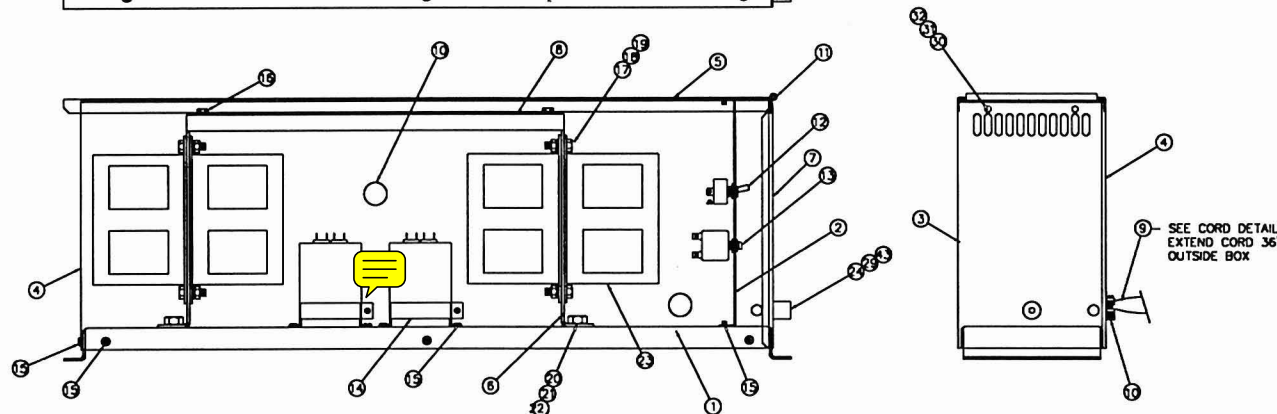
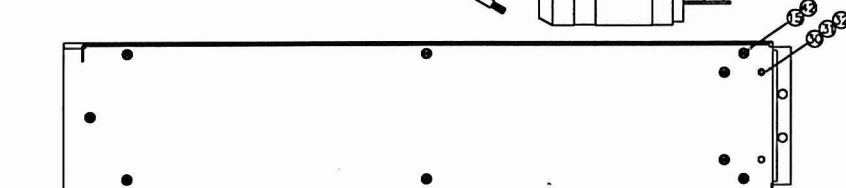
WINCO INC

ITEM	PART NO	QUAN.	DESCRIPTION				
UNLESS OTHERWISE SPECIFIED		ANGULAR ± 1.5°	MACHINED SURFACE TEXTURE				
FRACTIONS ±							
1. PLACE DEC. ± .1							
2. PLACE DEC. ± .031							
3. PLACE DEC. ± .005							
ALL DIMENSIONS GIVEN IN INCHES WORK TO DIMENSIONS - DO NOT SCALE -							
THIS DRAWING CONTAINS PROPRIETARY INFORMATION BELONGING TO WINCO, UNAUTHO- RIZED USE IS PROHIBITED.	DRAWN BY	DATE	CHKD BY	DATE	APP'D BY	DATE	SCALE
	D.M.W.	3-24-94			R.H.	4/27/94	1=4
	MATERIAL:						
	FINISH	NONE	TITLE EXHAUST SYSTEM				
	ASS'Y	C-15953					
	MODEL	LT6010DE					
				PART NO. B-16049			




[illegible]

REVISION RECORD					
ISSUE	E.C.G. NO.	DESCRIPTION	DATE	BY	APP.
1	_____	ORIGINAL	_____	_____	_____
2	_____	(1) HNS QTY 1, (2) HNS 71253, (3) HNS QTY 10.42	3-30-94	D.W.	_____



43	A-47517	1	SELF LOCKING NUT	1/4-20
42	A-96286-2	9	WASHER, NYLON	
41	A-64492	1	PLUG	
40	A-21486	1.67 FT	WIRE	#10 AWG WHT
39	A-98787	2	TERMINAL LUG	
38	7777	8	TERMINAL LUG	
37	B-48602-1	6	TERMINAL LUG	
36	4156	2	TERMINAL LUG	
35	B-48602-B	2	TERMINAL LUG	
34	A-64638	2.17 FT	WIRE	#10 AWG GREEN
33	A-91815	7.43 FT	WIRE	#10 AWG BLK
32	A-95568-1	4	THREDDSTUD	#10-24 x 3/8
31	21975	4	LOCKWASHER	#10
30	456	4	SCREW,	#10 -24
29	3884	1	NUT,	1/4-20 x .75
28	A-49975-11	10	TIE WRAP	
27	A-49975-10	2	TIE WRAP	
26	A-96936-B	3	NUT, WIRE	
25	A-96936-5	2	NUT, WIRE	
24	A-61660	1	RUBBER FOOT	
23	A-96946	4	LAMP BALLAST	
22	48178	4	SCREW,	1/2 -13 x 1
21	636	4	LOCKWASHER	1/2
20	1744	4	NUT	1/2 -13
19	A-480	8	LOCKWASHER	5/16
18	458	8	NUT	5/16-18
17	1116	8	SCREW,	5/16-18 x 1
16	A-55440	4	SCREW,	1/4-20 x 1/2
15	A-21698-1	26	SCREW, TORX	#10 x 3/8
14	A-96948-4	4	CAPACITOR MTG. BRKT	
13	A-91286	4	C.B.	
12	A-24238	4	SWITCH	
11	A-98742	1	HINGE	
10	A-92157-2	2	ROMEX CONNECTOR	
9	B-98400	4.67 FT	CORD	#10/4
8	A-99134	1	TOP, BALLAST ASS'Y	
7	A-99135	1	DOOR, BALLAST ASS'Y	
6	A-99129	2	SUPPORT, BALLAST	
5	B-99133	1	COVER, BALLAST ASS'Y	
4	B-99132	1	PANEL, SIDE	
3	B-99131	1	PANEL, SIDE/REAR	
2	A-99130	1	PANEL, FRONT	
1	B-99127	1	BASE, BALLAST ASS'Y	

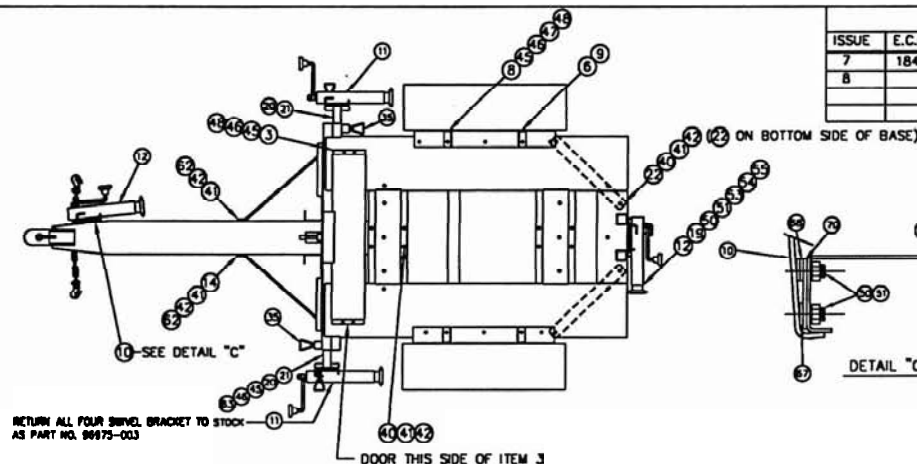
ITEM	PART NO	QTY	DESCRIPTION
UNLESS OTHERWISE SPECIFIED		MACHINED SURFACE TEXTURE	
FRACIONS *		ALL DIMENSIONS GIVEN IN INCHES	
1. PLACE DEC. .1	ANGULAR	WORK TO DIMENSIONS	
2. PLACE DEC. .015	± 1.5°	- DO NOT SCALE -	
3. PLACE DEC. .005			
THIS DRAWING CONTAINS PROPRIETARY INFORMATION BELONGING TO WINCO. UNAUTHORIZED USE IS PROHIBITED.	DRAWN BY	DATE	CHD BY
	D.M.W.	2-22-94	
	MATERIAL:		
FINISH	NONE	TITLE	
ASSY	C-99227	BALLAST ASSEMBLY	
MODEL	LSM4		
		PART NO. C-99128	

77766-3

TOWER WIRING/BALLAST ASS'Y CONNECTIONS

"LAMP" LEAD FROM CAPACITOR	BLUE
"LAMP" LEAD FROM CAPACITOR	ORANGE
"LAMP" LEAD FROM CAPACITOR	RED
"LAMP" LEAD FROM CAPACITOR	BLACK
GREEN LEAD FROM PANEL ASS'Y	GREEN
WHITE LEAD FROM PANEL ASS'Y	WHITE
	WHITE/BLACK

FROM TOWER

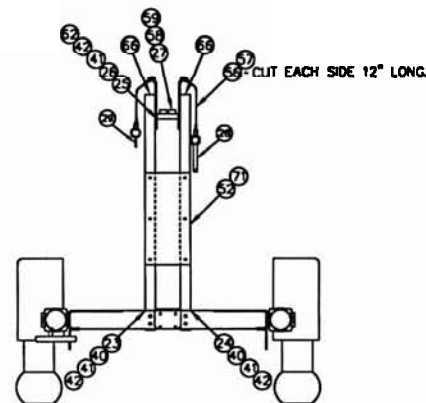
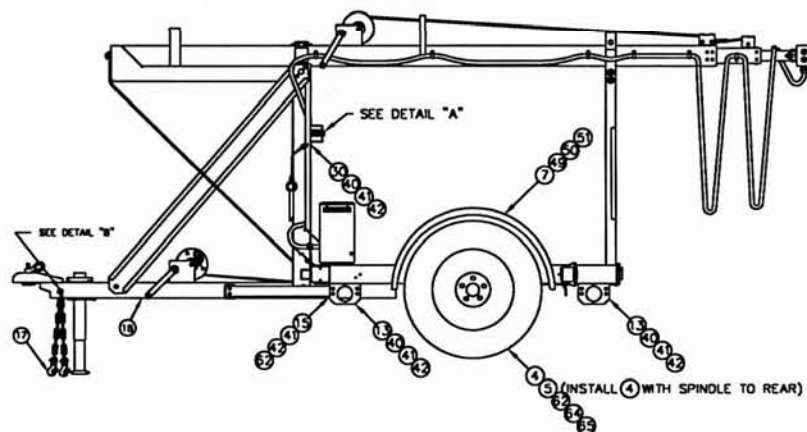
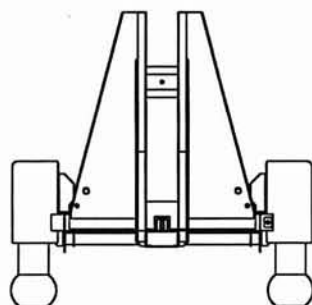


ISSUE		E.C.O. NO.		REVISION RECORD		DATE		BY		APPR.	
				DESCRIPTION							
7	184-95	ADDED (7)				6-5-95		C.M.		R.H.	
8		(7) WAS 98781, DELETED 99151				11-30-95		D.W.			

DETAIL "C"

DETAIL "A"

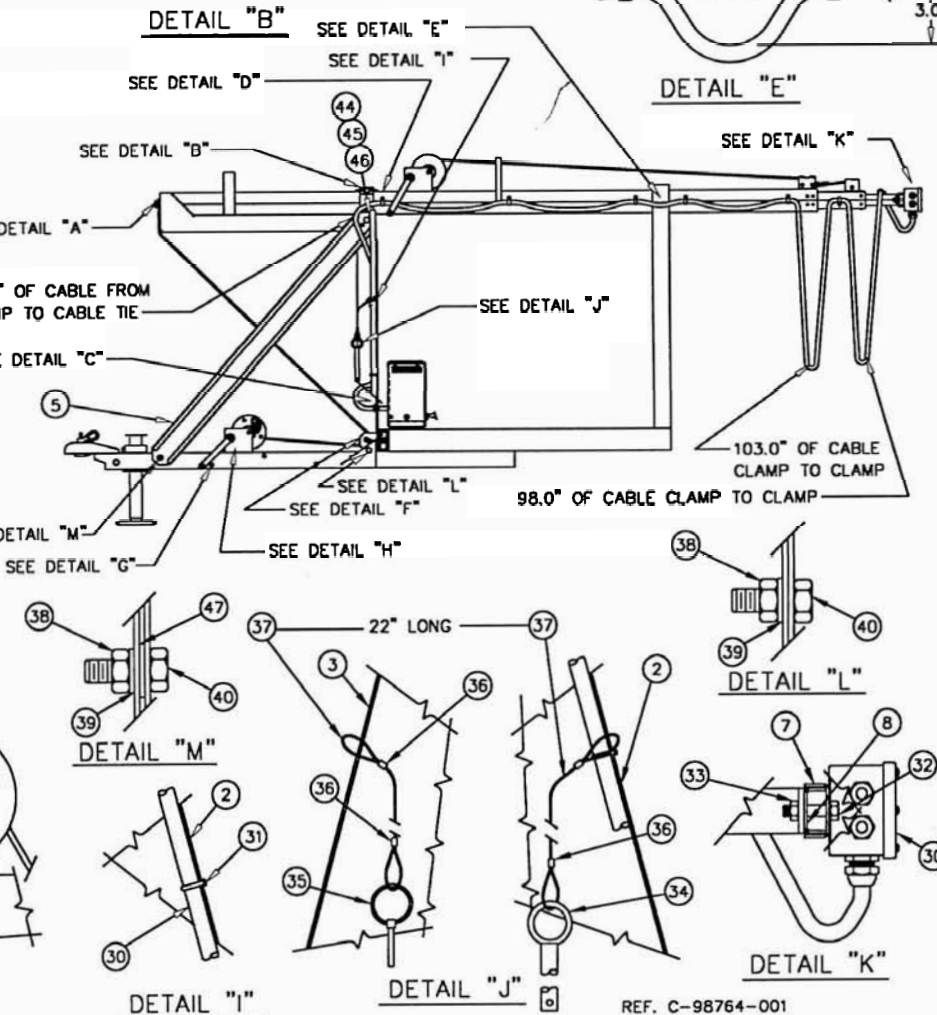
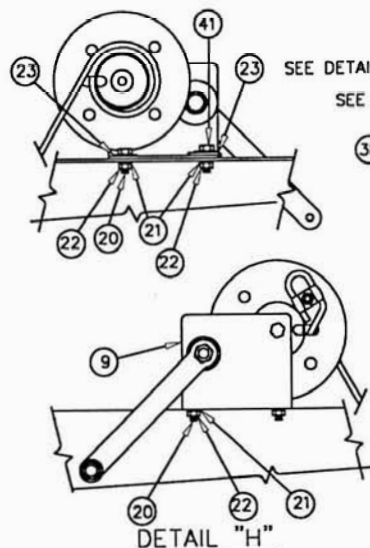
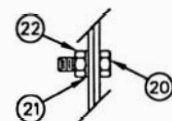
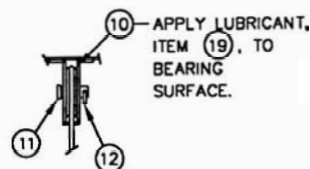
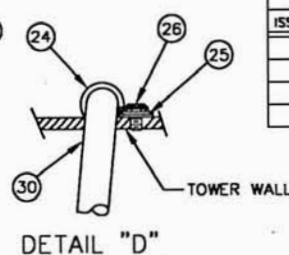
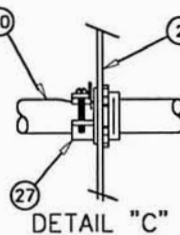
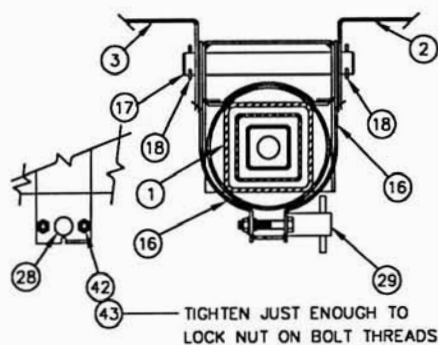
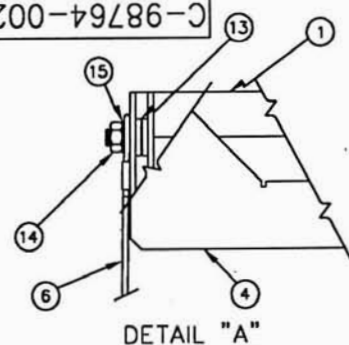
DETAIL "B"



30	A-99203	1	BRACKET, TOWER PUSHOFF	60	A-96936-5	5	NUT, WIRE	71	A-99450	1	BRACE, TOWER SUPPORT
29	A-96901	1	KEEPER	59	47136	2	LOCKING NUT 5/16-18	70	A-99355	1	SPACER, JACK (BACK)
28	B-96802-2	1	CLEVIS PIN	58	465	2	HHCS 5/16-18 x 7/8	69	C-99290	1	DECAL INSTALLATION
27	A-20191	2	SHOCK MOUNT	57	A-91433	4	CONNECTOR	68	A-99279-2	2	SPACER, JACK (TOP)
26	A-99157	1	BASE, TOWER CRADLE	56	A-96896	24	CABLE (CUT AS INDICATED)	67	A-99279-1	1	SPACER, JACK (BOTTOM)
25	A-99159	2	SIDE, TOWER CRADLE	55	638	1	HN 1/4-20	66	A-15511-1	2	PLUG, TUBE
24	A-99153-1	1	TOWER SUPPORT	54	479	1	SLW 1/4	65	92242	4	SELF LOCKING HN 1/2-13
23	A-99153	1	TOWER SUPPORT	53	A-466	1	HHCS 1/4-20 x 3/4	64	21867	4	FW 1/2"
22	A-99165	2	BRACE, REAR JACK	52	A-55440	10	SELF TAPPING MACHINE SCREW 1/4x1/2	63	A-91858-15	4	HHCS 3/8-16 x 4
21	A-99228	2	WELDMENT, FRONT JACK ADAPTER	51	458	10	HN 5/16-18	62	A-1516	16	HHCS 1/2-13 x 1 1/4
20	A-99139	2	TUBE, OUTRIGGER	50	480	10	SLW 5/16	61	A-96936-8	1	NUT, WIRE
19	A-99168	1	WELDMENT, REAR JACK ADAPTER	49	467	8	HHCS 5/16-18 x 3/4				
18	C-98715-1	1	WELDMENT, TONGUE & HITCH	48	A-91858-1	15	HHCS 3/8-16 x 1				
17	A-92061	2	HOOK, CHAIN	47	526	6	FW 3/8				
16	B-92043-5	1	CHAIN, SAFETY (84")	46	A-92914	19	HN 3/8-16				
15	B-99154	2	BRACE, TONGUE	45	481	19	SLW 3/8				
14	A-99152	1	BRACKET, TONGUE BRACE	44							
13	A-99149	4	HOLD DOWN	43	A-81589	3	OZ. LOCKING COMPOUND				
12	A-93180-1	2	JACK, SIDE WIND	42	636	52	SLW 1/2				
11	A-93180	2	JACK, TOP WIND	41	1744	52	HN 1/2-13				
10	A-99278	1	MODIFICATION, JACK MTG. BRACKET	40	48178	26	HHCS 1/2-13 x 1				
9	A-99150-1	2	CUSSET	39	A-99158	2	SUPPORT, TAIL LIGHT				
8	A-99150	2	CUSSET	38	A-98837	1	TRAILER LIGHT KIT				
7	B-99538-1	2	FENDER WELDMENT	37	A-98793	1	BAG OF BOLTS				
6				36	C-98783-1	4	LIGHT FIXTURE				
5	A-98726-1	2	TIRE & RIM ASSEMBLY	35	A-98765	2	1/2" PLUNGER ASSEMBLY				
4	A-99099	1	AXLE ASSEMBLY	34	A-96959	1	TOWER BUMPER				
3	C-99128	1	BALLAST ASSEMBLY	33	A-8909	1	SPRING				
2	C-99164	1	WELDMENT, BASE	32	A-21867	2	FW 1/2"				
1	C-98764-1	1	TOWER & CABLE INSTALLATION	31	A-57580-6	1	HHCS 1/2-13 x 3 1/2				

UNLESS OTHERWISE SPECIFIED		MACHINED SURFACE TEXTURE		ALL DIMENSIONS GIVEN IN INCHES	
FRACTIONS *	ANGULAR			WORK TO DIMENSIONS	
1. PLACE DEC. # .1	± 1.5°			- DO NOT SCALE -	
2. PLACE DEC. # .031					
3. PLACE DEC. # .005					
THIS DRAWING CONTAINS PROPRIETARY INFORMATION BELONGING TO WINCO. UNAUTHORIZED USE IS PROHIBITED.		DRAWN BY	DATE	DWG BY	DATE
		RH	3/5/94	RH	4/26/94
		APPR BY	DATE	SCALE	
		RH	4/26/94	1"=18"	
		MATERIAL:		COMPLETE UNIT ASSEMBLY	
		FWH#		C-99227	
		ASSY			
		MODEL			
		MSL4			

C-98764-002



REVISION RECORD					
ISSUE	E.C.O. NO.	DESCRIPTION	DATE	BY	APPR.
1		ORIGINAL			

47	515-000	2	5/8 FLATWASHER
46	A-98879-001	4	THREDDSTUD
45	458-000	4	5/16-18 HEXNUT
44	480-000	4	5/16 LOCKWASHER
43	9416-000	2	5/16-18 X 1-3/4 HEX HEAD BOLT
42	47136-000	2	5/16-18 HEX LOCKNUT
41	A-91658-002	1	3/8-16 X 1-1/4 HEX HEAD BOLT
40	A-91083-001	8	5/8-11 X 1-1/2 HEX HEAD BOLT
39	3577-000	8	5/8 LOCKWASHER
38	447-000	8	5/8-11 HEX NUT
37	A-96896-000	44*	CABLE (CUT AS INDICATED)
36	A-91433-000	4	CONNECTOR
35	A-96901-000	1	KEEPER
34	B-96802-000	1	CLEVIS PIN
33	A-92242-000	2	1/2-13 HEX NUT
32	A-57580-001	2	1/2-13 X 2.5 HEX HEAD BOLT
31	B-49975-011	3	CABLE TIE
30	B-98776-000	1	JUNCTION BOX AND CABLE ASS'Y
29	A-98773-000	1	T-HANDLE
28	A-98772-003	1	3/8-16 X 2 CARRAGE BOLT
27	A-92157-002	1	ROMEX CONNECTOR
26	A-55440-000	7	1/4-20 X .5 SELF-TAPPING SCR.
25	A-512-000	7	1/4 FLAT WASHER
24	B-97391-007	7	WIRE CLAMP
23	526-000	3	3/8 FLAT WASHER
22	A-92914-000	10	3/8-16 HEX NUT
21	481-000	10	3/8 SPLIT LOCKWASHER
20	A-91658-001	9	3/8-16 X 1 HEX HEAD BOLT
19	A-62381-000AS RECD	1	MULTI-PURPOSE GREASE
18	3418-000	2	COTTER PIN
17	A-98431-000	1	TOWER PIVOT PIN
16	B-98693-000	2	ROTATION CLAMP HALF
15	1178-000	1	3/4 FLAT WASHER
14	A-98838-000	1	3/4-10 LOCKING HEX NUT
13	A-95929-000	1	THRUST BEARING
12	A-97883-000	1	HAIR PIN COTTER
11	A-96857-001	1	CLEVIS PIN
10	B-96935-000	1	PULLEY
9	B-98731-000	1	WINCH
8	B-98750-001	1	BOTTOM LIGHT BAR
7	B-98749-001	1	TOP LIGHT BAR
6	B-98778-000	1	CABLE ASSEMBLY
5	C-98840-000	2	BRACE, TOWER SUPPORT
4	C-98695-000	1	TOWER TILTING CHANNEL ASS'Y
3	B-99204-002	1	LEFT TOWER SUPPORT
2	B-99204-001	1	RIGHT TOWER SUPPORT
1	C-98743-000	1	TOWER & CABLES ASSEMBLY

ITEM	PART NO	QUAN.	DESCRIPTION
UNLESS OTHERWISE SPECIFIED			
FRACTIONS & PLACE DEC. #		ANGULAR	MACHINED SURFACE TEXTURE
1. PLACE DEC. #		±	WORK TO DIMENSIONS
2. PLACE DEC. #			- DO NOT SCALE -
3. PLACE DEC. #			
THIS DRAWING CONTAINS PROPRIETARY INFORMATION BELONGING TO WINCO, UNAUTHORIZED USE IS PROHIBITED.		DRAWN BY J.L.	DATE 12-5-00
MATERIAL: FINISH: C-99227-001		DATE	DATE
MODELS: M/S4 /B		DATE	DATE
FILE: TOWER AND CABLES INSTALLATION		DATE	DATE
PART NO. C-98764-002		DATE	DATE

REF. C-98764-001

SCALE: 1"=5"

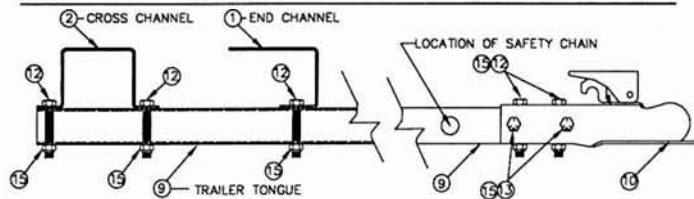
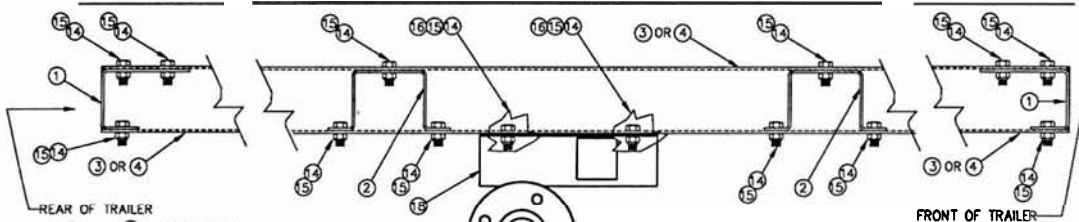
ISSUE	E.C.Q. NO.	DESCRIPTION	DATE	BY	APPR.
4		ITEM 23 WAS QTY (2)	11-21-98	JK	SV
5	048-01	23 WAS 642-000	2-2-01	BN	SV
6		ADDED (X)	3/12/03	JL	

DETAIL "A"

DETAIL "B"

DETAIL "C"

DETAIL "D"



NOTES:

- 1: LUG NUTS ARE ALIGNED WITH ITEM 18, BUT ARE INCLUDED IN THE PARTS LIST FOR ASSEMBLING ITEM 3.
- 2: ALL BOLTS TO BE TORQUED TO 25 FT.-LBS.
- 3: ITEMS 1-6 ARE PHANTOMS FOR THIS KIT
- 4: PLACE ITEMS INTO 2 AND STOCK AS P/N 64679-101
- 5: ITEMS 3, 4 AND 6 OF 13 ARE USED TO ASSEMBLE GENERATOR SET TO TRAILER
- 6: TO PRINT INSTRUCTIONS SHEET FREEZE LAYERS 10,11,12,13 & NOTE 6, THAW ALT-BORD, PLOT "B" SIZE 1=15

DETAIL "E"

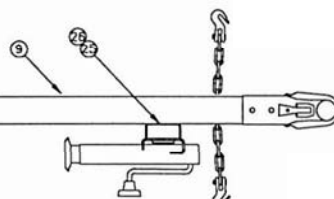
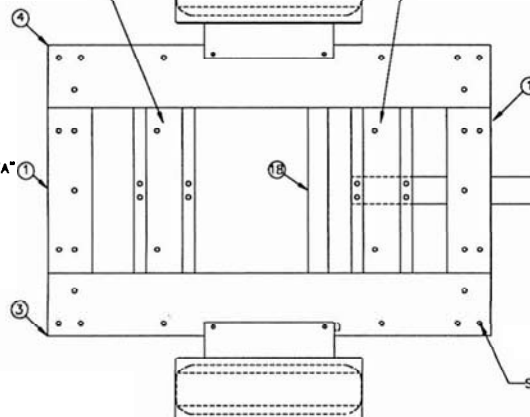
TOP VIEW

DETAIL "F"

DETAIL "G"

SEE DETAIL "B" 2

SEE DETAIL "B" 2



MOUNTING PATTERN FOR MD6-L OR MLS4-L GENERATOR

MOUNTING PATTERN FOR MD6-Y OR MLS4-Y GENERATOR

SEE DETAIL "C"

SEE DETAIL "F" 11

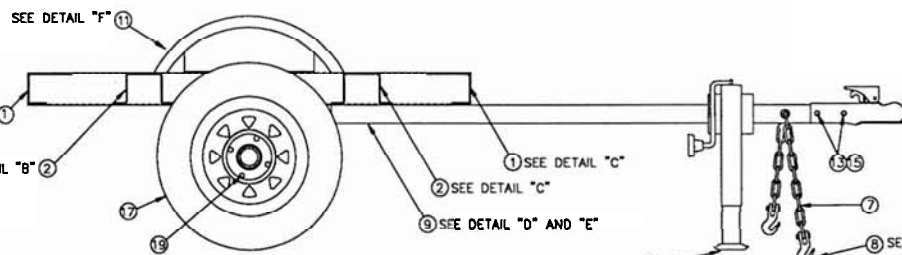
SEE DETAIL "A" 1

SEE DETAIL "B" 2

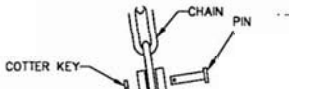
SEE DETAIL "C" 1

SEE DETAIL "C" 2

SEE DETAIL "D" AND "E" 9

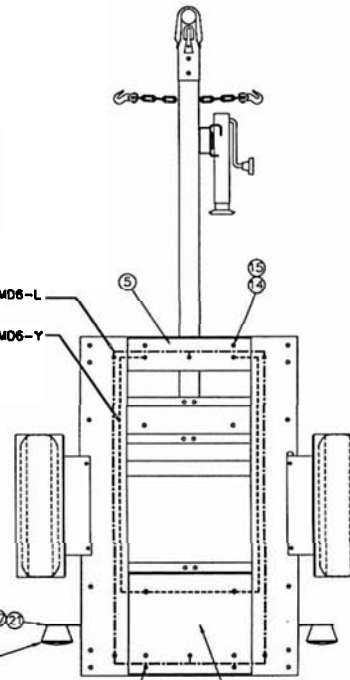


SIDE VIEW WITH CROSS SECTION



THREAD CHAIN THROUGH TRAILER TONGUE THEN ATTACH HOOK TO CHAIN WITH PIN AND COTTER KEY

DETAIL "G"



COMPLETE ASSEMBLY

SCALE 1:12.5

ITEM	PART NO.	QUAN.	DESCRIPTION
56	98372-000	1	CERTIFICATE OF ORIGIN
35	B-64679-102	1	INSTRUCTION SHEET
34	A-636-000	6	1/2-13 LOCKWASHER (SEE NOTE 5)
33	A-1744-000	6	H.L. 1/2-13 (SEE NOTE 5)
32	B-100,047-711	1	SHIPPING CARTON
31	A-64698-000	1	SHEET METAL KIT (SEE NOTE 3)
30	64679-101	1	BOLT KIT, TRAILER (SEE NOTE 4)
29	A-479-000	4	1/4" STD. SPLIT LOCKWASHER
28	A-636-000	4	1/4-20 HEX NUT
27	A-483-000	4	1/4-20 x 1/2 H.L.C.S. GRADE 5
26	A-481-000	4	3/8" SPLIT LOCK WASHER
25	A-91714-001	4	3/8-24 x 1 SAE GRADE 5
24	100054-829	1	PAPER BAG
23	100047-708	2	SHIPPING CARTON
22	A-98837-000	1	TRAILER LIGHT KIT
21	A-98158-000	2	TRAILER LIGHT SUPPORTS
20	A-64696-000	1	JACK ASSEMBLY
19	SEE NOTE 1	8	LUG NUT
18	A-99099-002	1	TORFLX AXLE, 1500#
17	A-84658-000	2	TIRE AND RIM ASSEMBLY
16	A-21867-000	4	FLAT WASHER FOR AXLE
15	A-92242-000	48	1/2-13 HEX NUT SELF LOCKING STEEL ESNA 21E083
14	A-48178-000	42	H.L.C.S. 1/2-13 x 1 SAE GRADE 5 (SEE NOTE 2 & 5)
13	A-57580-005	2	H.L.C.S. 1/2-13 x 4 SAE GRADE 5 (SEE NOTE 2)
12	A-57580-007	6	H.L.C.S. 1/2-13 x 3 SAE GRADE 5 (SEE NOTE 2)
11	A-84685-000	2	FENDER WELDMENT
10	A-84683-000	1	COUPLER
9	B-64677-000	1	TRAILER TONGUE
8	A-92061-000	2	HOOK AND PIN ASSEMBLY
7	A-92043-005	1	SAFETY CHAIN
6	A-18041-000	1	REAR PLATE, SPACER (REFERENCE)
5	A-84681-000	1	FRONT PLATE, SPACER (REFERENCE)
4	B-64678-002	1	SIDE CHANNEL (REFERENCE)
3	B-64678-001	1	SIDE CHANNEL (REFERENCE)
2	B-64678-000	2	CROSS CHANNEL (REFERENCE)
1	A-64675-000	2	END CHANNEL (REFERENCE)

ITEM	PART NO.	QUAN.	DESCRIPTION
1	PLATE SEC. A	.1	ANGLAR
2	PLATE SEC. B	.031	ANGLAR
3	PLATE SEC. C	.005	ANGLAR
4	DRIVER	8-28-94	DATE
5	DESIGN	FS-39	DATE
6	MODEL	TRAILER-MOB	DATE
7	SCALE	1"=10"	DATE
8	COMPLETE UNIT ASSY.		
9	C-64679-000		