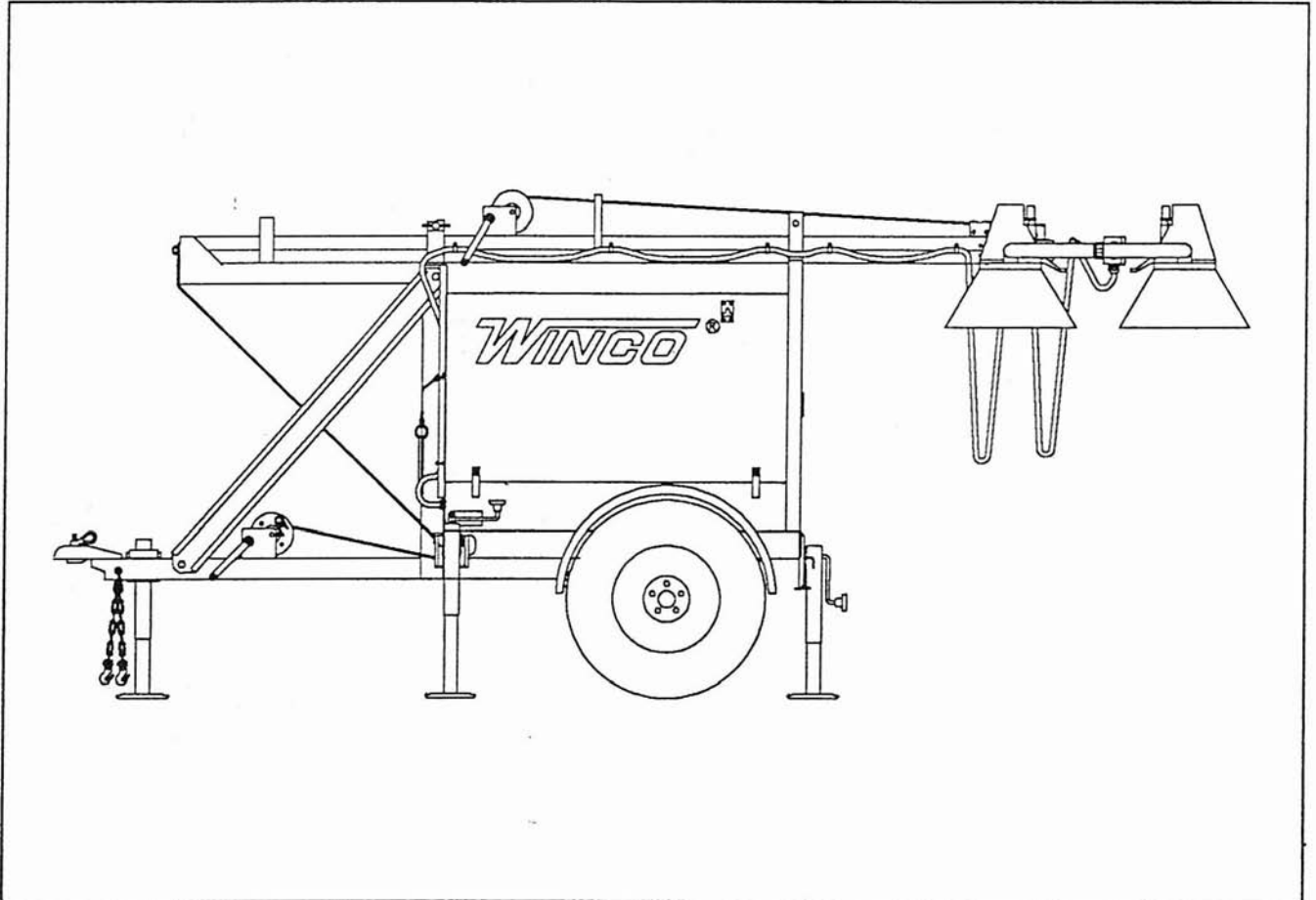


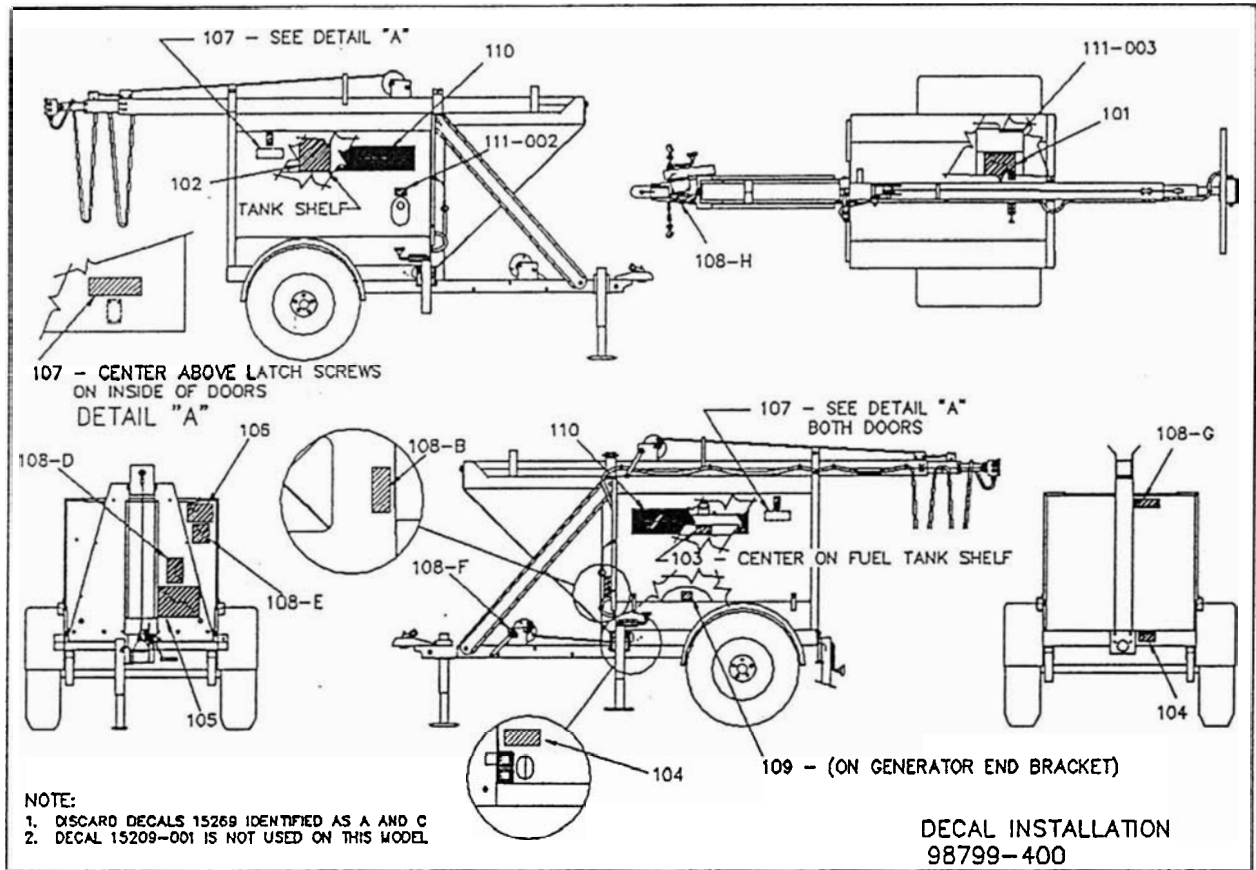
WINGCO[®] Mobile Lighting Systems

ILLUSTRATED PARTS LIST - LSC4II-MH/A



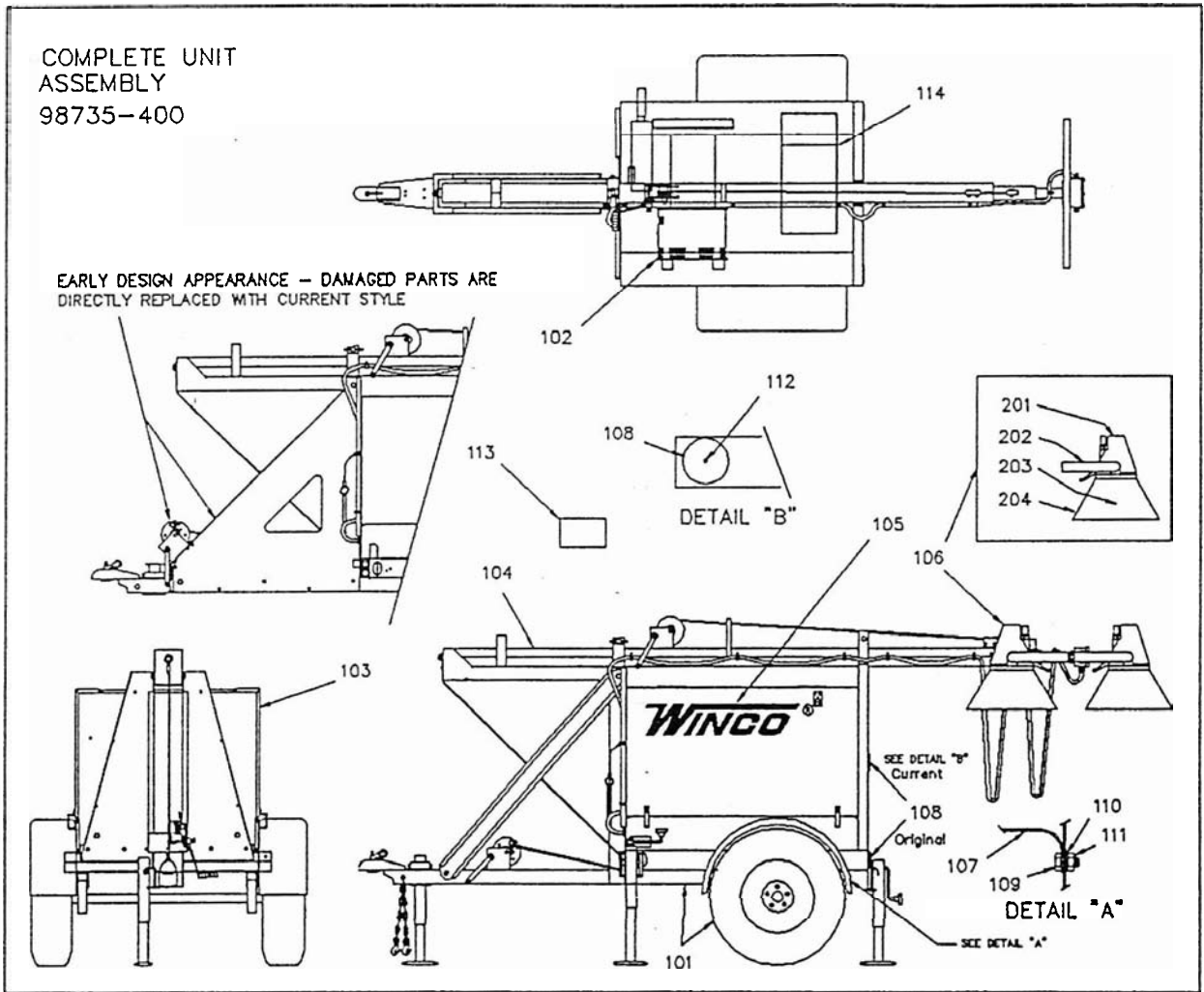
LSC4II-MH/A - IPL LOCATOR

| INDEX | PAGE | | |
|----------------------|------|-------------------------------|----------|
| DECAL INSTALLATION | i | CONTROL - BALLAST / PANEL | 6 |
| COMPLETE UNIT | 1 | TRAILER - BASE / AXLE / TIRES | 7 |
| TOWER AND TILT ASY | 2 | HOUSING & FUEL TANK | 7 |
| TOWER AND CABLES ASY | 3 | REFERENCE DATA | 5 |
| GENERATOR | 4, 5 | SCHEMATICS | 8, 9, 10 |
| ENGINE | 4 | AC / GENERATOR | 8 |
| | | AC / BALLAST | 8 |
| | | AC / TOWER | 8 |
| | | DC / ENGINE | 9 |
| | | AC, DC / CONTROL PANEL | 9, 10 |



98799-400 Decal Installation

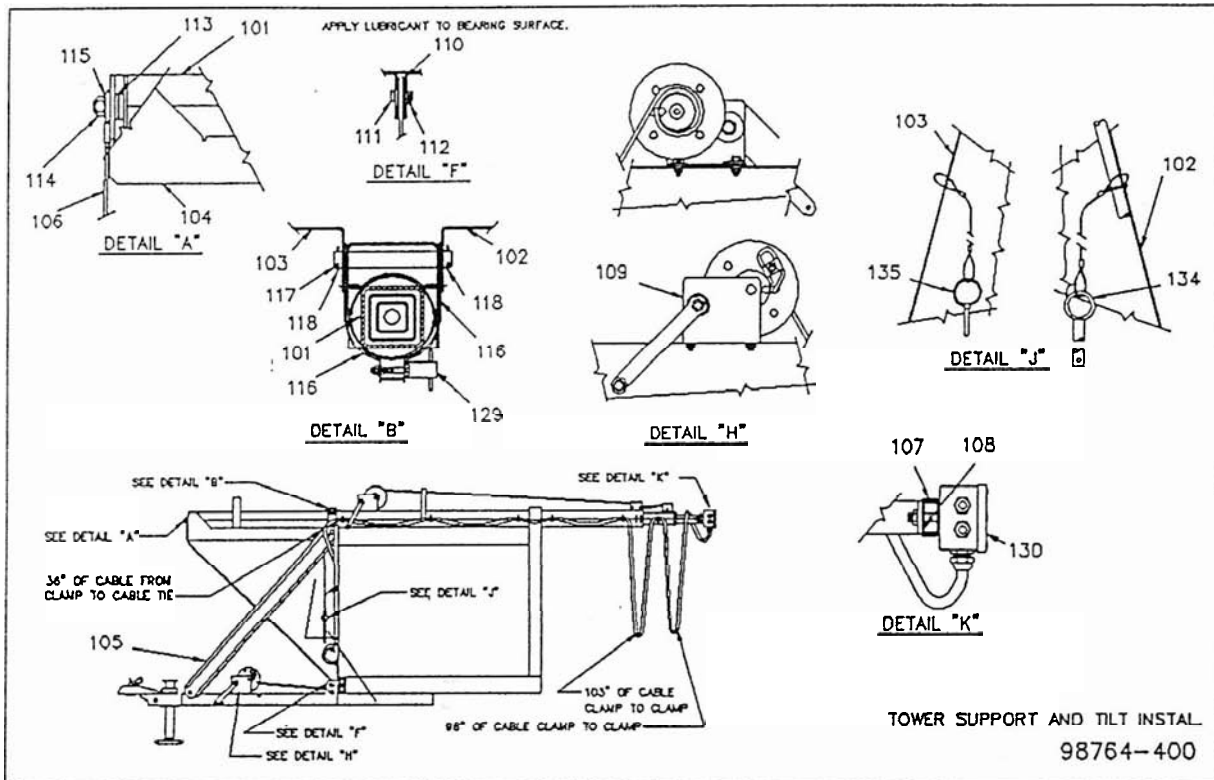
| Ref | Description | Part No. | Qty |
|-----|--------------------------|-----------|-----|
| 101 | Operating Instructions | 97338-004 | 1 |
| 102 | Maintenance Schedule | 97344-000 | 1 |
| 103 | Decal - Diesel Fuel | 97381-000 | 1 |
| 104 | Decal - Jack Warning | 97379-000 | 3 |
| 105 | Decal - Tower Instruct. | 97375-002 | 1 |
| 106 | Decal - Tower/Power line | 97380-001 | 1 |
| 107 | Decal - Door Catch | 98798-000 | 2 |
| 108 | Decal Set - Warning Grp. | 15269-000 | 1 |
| 109 | Nameplate | 63966-000 | 1 |
| 110 | Decal - 6" Winco Logo | 98913-000 | 2 |
| 111 | Decal Set - Safety | 15209-000 | 1 |



98735-400 Complete Unit Assembly - LSC4II

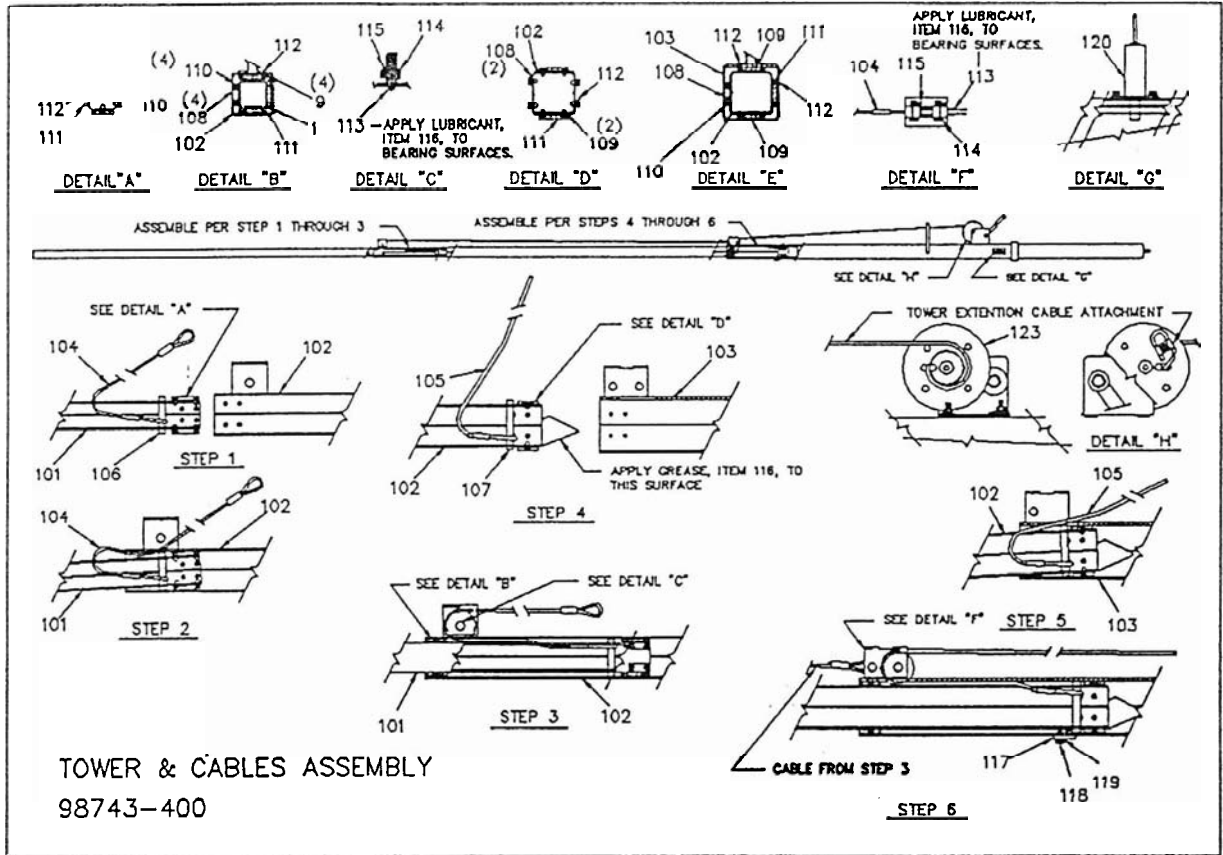
| Ref | Description | Part No. | Qty | Ref | Description | Part No. | Qty |
|------|-----------------------------|-----------|-----|------|-----------------------------|-----------|-----|
| 101 | Trailer Assembly - pg 7 | 98723-400 | 1 | 112 | SM Screw - #10-32 X .5 | 53644-000 | 2 |
| 102 | Engine Generator Set - pg 4 | 98719-400 | 1 | 113 | Bag of Bolts (Light Mtg) | 98793-000 | 1 |
| 103 | Housing Installation - pg 7 | 98722-400 | 1 | 114 | Control Box Assembly - pg 6 | 98734-400 | 1 |
| 104 | Tower Installation - pg 2 | 98764-400 | 1 | 115 | *Operators Manual & IPL | 60706-101 | 1 |
| 105 | Decal Installation - pg i | 98799-400 | 1 | 201 | | | 4 |
| 106 | Light Fixture Asy. W/ Lamp | 98783-001 | 4 | 202 | | | 4 |
| 106a | Light Fixture | 98732-000 | 4 | 203 | | | 4 |
| 107 | Fender | 98781-000 | 2 | 204a | | | 4 |
| 108a | DOT Reflector (Std.) | 95881-003 | 2 | 204b | * Lamp, MH - 1000 w, 120V | 96941-002 | 4 |
| 108b | DOT Light Kit (Optional) | 98837-000 | 1 | | | | |
| 109 | HHCS - 5/16-18 X .75 | 00467-000 | 8 | | | | |
| 110 | Split Lockwasher - 5/16 | 00480-000 | 8 | | | | |
| 111 | Hex Nut - 5/16-18 | 00458-000 | 8 | | | | |

* Not Illustrated



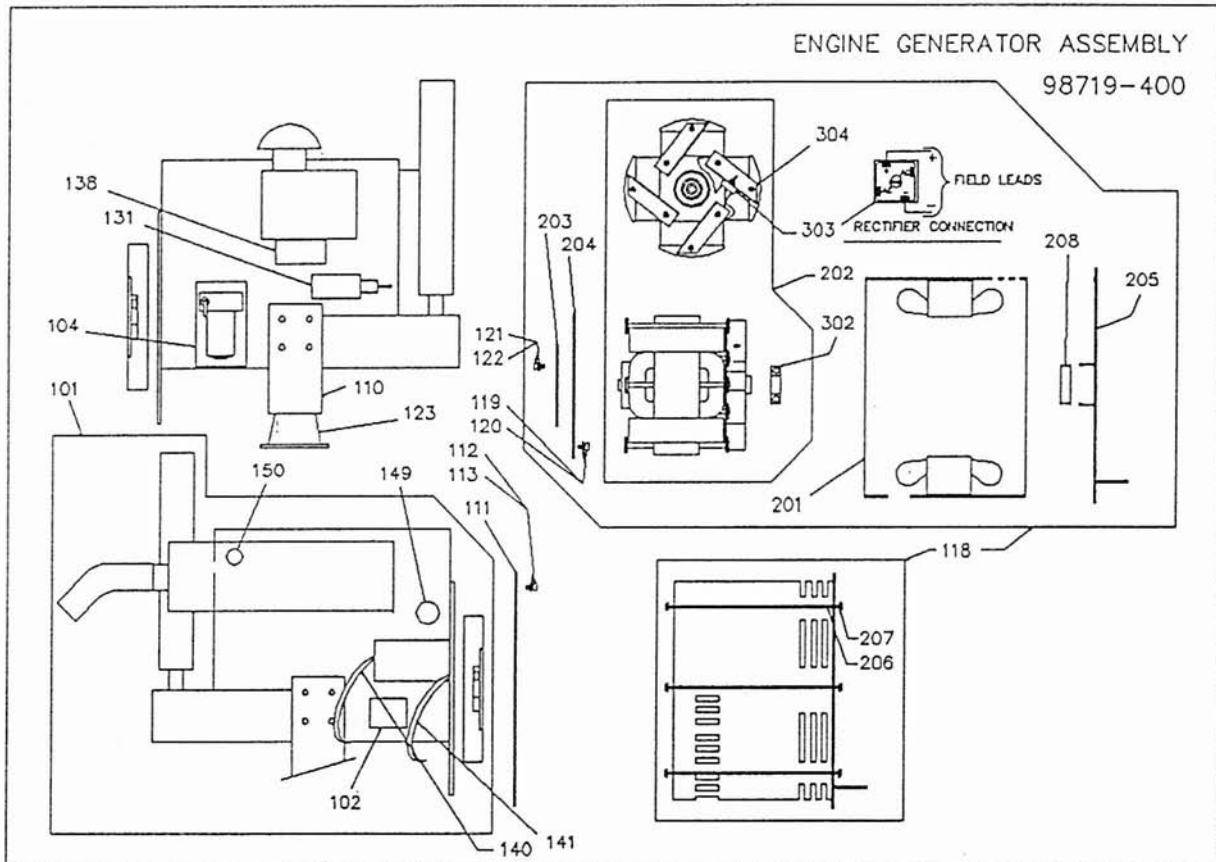
98764-400 Tower Support and Tilt Installation

| Ref | Description | Part No. | Qty | Ref | Description | Part No. | Qty |
|-----|---------------------------|-----------|-----|-----|--------------------------|-----------|-----|
| 101 | Tower and Cables Asy. | 98743-400 | 1 | 115 | Flat Washer - 3/4" | 01178-000 | 1 |
| 102 | Right Tower Support | 98841-001 | 1 | 116 | Rotation Clamp (Half) | 98693-000 | 2 |
| 103 | Left Tower Support | 98841-002 | 1 | 117 | Pivot Pin, Tower | 98431-000 | 1 |
| 104 | Tower Tilt Channel Wldmt. | 98695-000 | 1 | 118 | Cotter Pin | 03418-000 | 2 |
| 105 | Brace, Tower Support | 98840-000 | 2 | 119 | Multi-Purpose Grease | 62381-000 | 1 |
| 106 | Cable Assembly | 98778-000 | 1 | 127 | Romex Connector | 92157-002 | 1 |
| 107 | Light Bar, Top (Outside) | 98749-000 | 1 | 128 | Carriage Bolt - 3/8-16X2 | 98772-003 | 1 |
| 108 | Light Bar, Bot. (Inside) | 98750-000 | 1 | 129 | "T"- Handle | 98773-000 | 1 |
| 109 | Winch | 98731-000 | 1 | 130 | Jctn. Box and Cable Asy | 98776-000 | 1 |
| 110 | Pulley | 96935-000 | 1 | | | | |
| 111 | Clevis Pin | 96857-001 | 1 | | | | |
| 112 | Cotter Pin | 97883-000 | 1 | 134 | Clevis Pin | 96802-000 | 1 |
| 113 | Thrust Bearing | 95929-000 | 1 | 135 | Keeper | 96901-000 | 1 |
| 114 | Hex Lock Nut - 3/4-10 | 98838-000 | 1 | | | | |



98743-400 Tower and Cables Assembly

| Ref | Description | Part No. | Qty | Ref | Description | Part No. | Qty |
|-----|--------------------|-----------|-----|-----|----------------------|-----------|-----|
| 101 | Tower Section - 2" | 98683-000 | 1 | 112 | Pop Rivet | 63835-000 | 42 |
| 102 | Tower Section - 3" | 98682-000 | 1 | 113 | Pulley | 98935-000 | 2 |
| 103 | Tower Section - 4" | 98681-000 | 1 | 114 | Clevis Pin | 96857-001 | 3 |
| 104 | Cable Assembly | 96839-000 | 1 | 115 | Cotter Pin | 97883-000 | 3 |
| 105 | Cable Assembly | 98777-000 | 1 | 116 | Multi-Purpose Grease | 62381-000 | 1 |
| 106 | Pin | 96610-002 | 1 | 117 | Tower Stop | 96612-000 | 1 |
| 107 | Pin | 96610-001 | 1 | | | | |
| 108 | Shim | 96597-000 | 22 | 120 | Latch Assembly | 96677-001 | 1 |
| 109 | Shim | 96598-000 | 25 | 123 | Winch | 98731-000 | 1 |
| 110 | Spacer | 96621-000 | 10 | | | | |
| 111 | Spacer | 96599-000 | 11 | | | | |



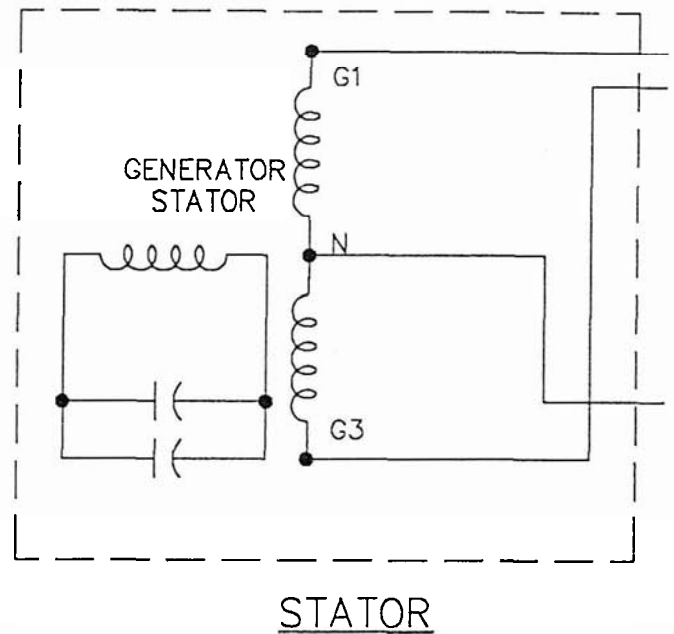
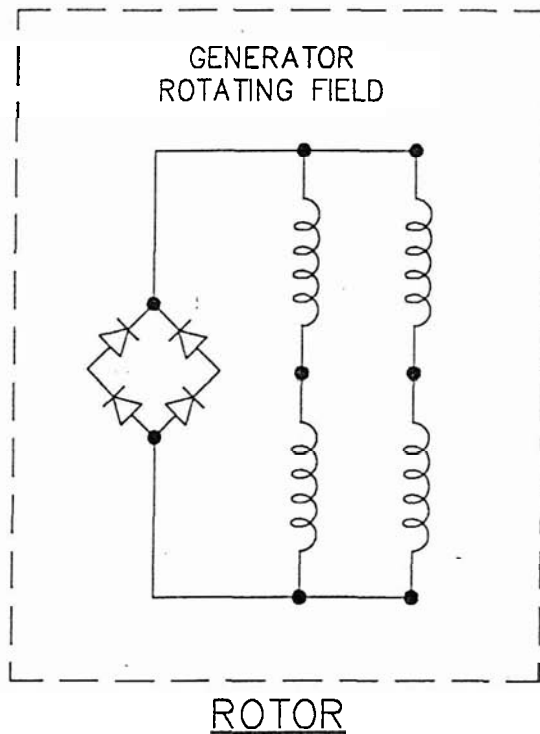
98719-400 Engine Generator Assembly

| Ref | Description | Part No. | Qty | Ref | Description | Part No. | Qty |
|-----|--------------------------|-----------|-----|-----|---------------------------|-----------|-----|
| 101 | Engine Kubota D850B | 98718-001 | 1 | 122 | Split Lockwash. -1/16(B) | 00480-001 | 5 |
| 102 | Bat Chrg. Volt Regulator | 96577-005 | 1 | 123 | Shock Mount | 98807-000 | 4 |
| 104 | Mtg. Plate - VR / Filter | 98760-000 | 1 | 131 | Solenoid (With Plug) | 97302-002 | 1 |
| 107 | HHCS - M10-1.25 X 20mm | 94542-020 | 4 | 132 | *Coolant Recovery Tank | 94338-000 | 1 |
| 108 | HHCS - M10-1.25 X 25mm | 94542-025 | 8 | 133 | *Mtg. Bracket - CRT | 94339-000 | 1 |
| 109 | Split Lockwasher - M10 | 93341-010 | 12 | 138 | Brace - Air Cleaner | 98804-000 | 1 |
| 110 | Engine Mounting Feet | 98765-000 | 2 | 140 | Battery Cable (+) Pos. | 53220-045 | 1 |
| 111 | Engine Adapter Plate | 98766-000 | 1 | 141 | Battery Cable (-) Neg. | 53220-046 | 1 |
| 112 | HHCS - M8-1.25 X 20mm | 93344-000 | 8 | 142 | *Clamp - Battery Cable | 97568-003 | 1 |
| 113 | Split Lockwasher - M8 | 93341-008 | 8 | 144 | *Bolt - Battery Hold | 75112-000 | 2 |
| 114 | *Hex Nut - M8-1.25 | 94442-003 | 2 | 145 | *Bracket - Battery Hold | 63088-000 | 1 |
| 116 | *Dowel Pin - 8 X 24mm | 98779-001 | 1 | 149 | LOP Switch - Eng. Oil Pr. | 98410-000 | 1 |
| 118 | Generator Assembly | 98758-400 | 1 | 150 | HCT Switch - Engine Temp | 98409-000 | 1 |
| 119 | HHCS - M8(B)-1.25 X 20mm | 96002-020 | 6 | | | | |
| 120 | Split Lockwasher - M8(B) | 97436-008 | 6 | | | | |
| 121 | HHCS 5/16-18 X 7/8 (B) | 91546-001 | 5 | | | | |

* Not Illustrated

A.C. SCHEMATIC – (PARTIAL)

98785-GEN



REFERENCE DATA - ELECTRICAL

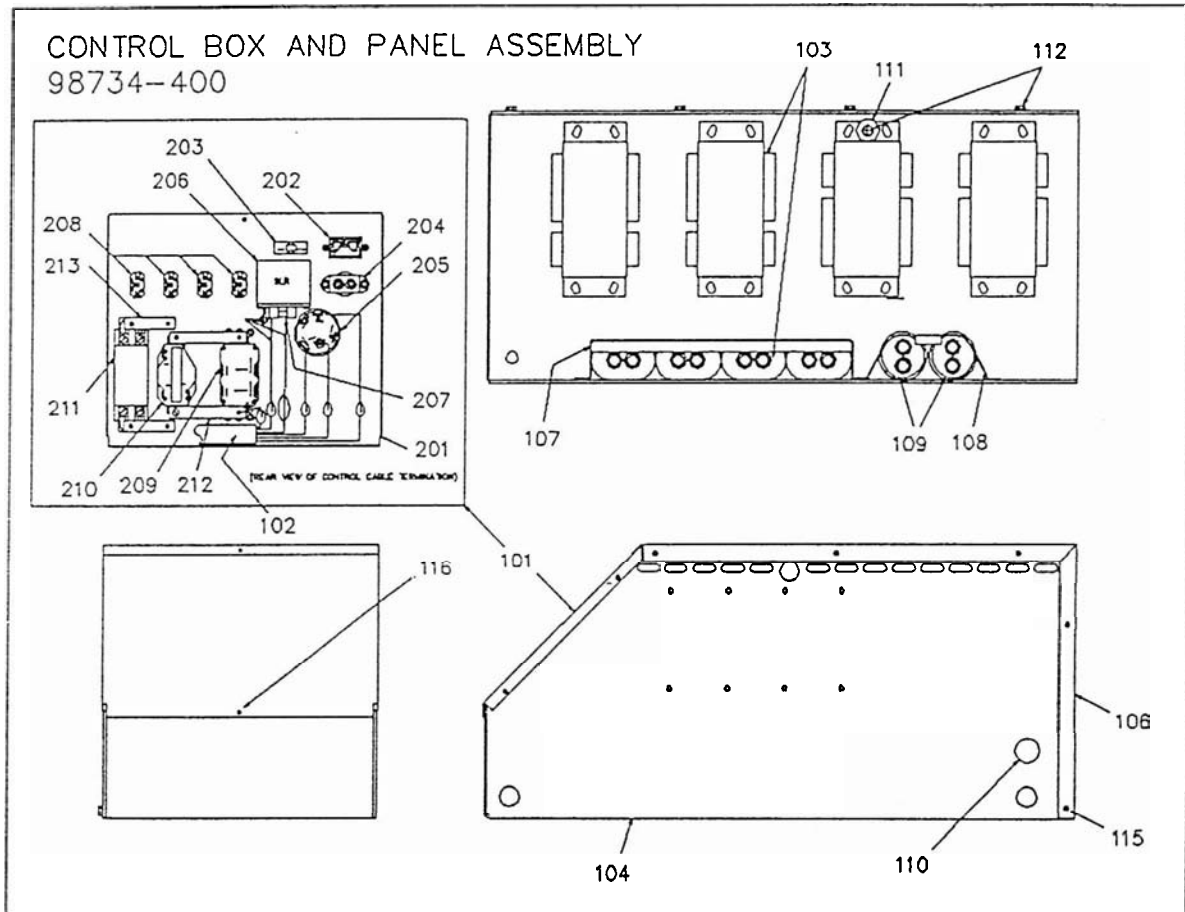
| UNIT MODEL SERIES | LSC4II-MH/A |
|--|---------------|
| AC RESIDUAL VOLTS | 6.0 VAC L-L |
| AC RESIDUAL VOLTS | 3.0 VAC L-N |
| AC RESIDUAL VOLTS | 2.5 VAC Q1-Q2 |
| FIELD (ROTOR) RESISTANCE | 1.34 OHMS |
| STATOR PER COIL L > N | 0.49 OHMS |
| STATOR PER COIL Q1 > Q2 | 0.49 OHMS |
| WINDING SPEC (SS#) | 1542 |
| ARM CONNECTION (AC#) | 372 |
| EXCITATION CAPACITANCE (2 X 40) 80 mfd | |
| AC GENERATOR WIRING | 98785-000 |
| AC CONTROL PANEL WIRING | 98768-000 |
| AC BALLAST WIRING | 98785-000 |
| AC TOWER WIRING-MH | 98785-000 |
| ENGINE CONTROL WIRING | 98784-000 |
| DC CONTROL PANEL WIRING | 98768-000 |
| AC SCHEMATIC COMPLETE | 98785-000 |
| DC SCHEMATIC COMPLETE | 98784-000 |

98758-400 Generator Assembly

| Ref | Description | Part No. | Qty |
|-----|--------------------------|-----------|-----|
| 201 | Stator / Shell Assembly | 98761-000 | 1 |
| 202 | Rotor Assembly | 98756-400 | 1 |
| 203 | Flex Disk (Large) | 98741-000 | 1 |
| 204 | Flex Disk (Small) | 98671-000 | 1 |
| 205 | Generator End Brkt Weld. | 98639-000 | 1 |
| 206 | Stud - 5/16-24 X 11-7/8 | 98757-000 | 6 |
| 207 | Lock Nut - 5/16-24 NF | 98797-000 | 12 |
| 208 | Tolerance Ring | 15122-004 | 1 |

98756-400 Rotor Assembly

| Ref | Description | Part No. | Qty |
|-----|-------------------------|-----------|-----|
| 302 | Bearing | 54666-000 | 1 |
| 303 | Rectifier - Full Wave | 91452-000 | 1 |
| 304 | Fan Blade - Gen Cooling | 98636-000 | 4 |



98734-400 Control Box Assembly

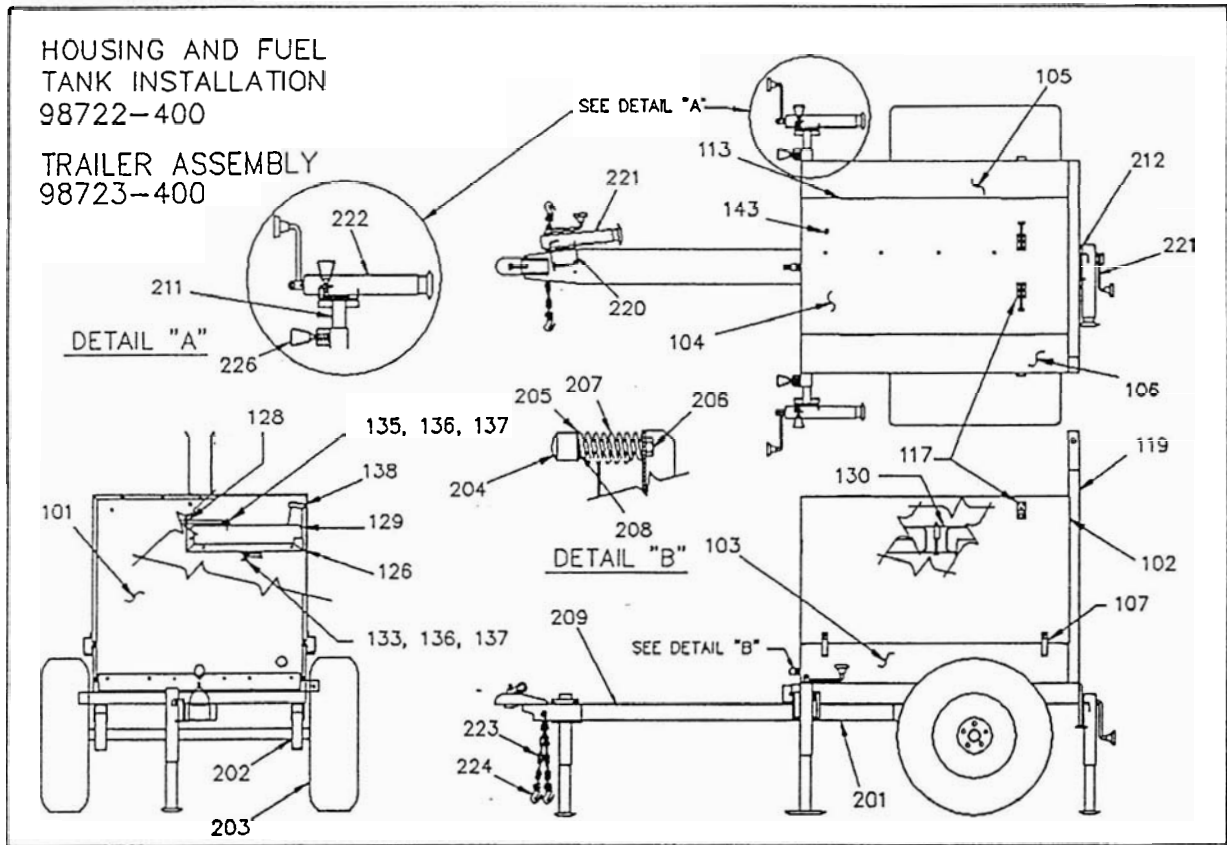
98768-400 Control Panel Assembly

| Ref | Description | Part No. | Qty |
|------|--------------------------|-----------|-----|
| 101 | Control Panel Assembly | 98768-400 | 1 |
| 102 | Engine Wiring Harness | 98786-000 | 1 |
| 103a | Lamp Ballast W/Cap - MH | 96946-000 | 4 |
| 103b | Lamp Ballast W/Cap - HPS | 99999-000 | 4 |
| 104 | Ballast Tray Kit | 98704-001 | 1 |
| 105 | *Wire Nut (Neutral) | 96936-008 | 1 |
| 106 | Cover, Ballast Tray | 98706-000 | 1 |
| 107 | Bracket, Capacitor Mtg. | 98744-000 | 1 |
| 108 | Strap, Capacitor | 15088-000 | 1 |
| 109 | Capacitor - GEN. Excit. | 15051-000 | 2 |
| 110 | Romex Connector | 92157-002 | 1 |
| 111 | Flat Washer - 1"od X 1/8 | 23558-001 | 8 |
| 112 | Screw, Tap - 1/4 X 1/2 | 55440-000 | 8 |
| 113 | *Wire Nut | 96936-005 | 11 |
| 115 | Screw, #10 Torx (Zinc) | 21698-000 | 15 |
| 116 | Screw, #10 Torx (Black) | 21698-001 | 10 |

| Ref | Description | Part No. | Qty |
|-----|--------------------------|-----------|-----|
| 201 | Front Panel (screened) | 97392-002 | 1 |
| 202 | Meter, Run Time (RTM) | 98429-000 | 1 |
| 203 | Circuit Breaker - 15A 1P | 98426-000 | 1 |
| 204 | Indicator, Glow Plug | 98446-000 | 1 |
| 205 | Switch, Key Start/Run | 98718-002 | 1 |
| 206 | Relay, Safety Latching | 91688-001 | 1 |
| 207 | Dummy Fuse -Bypass | 61612-000 | 1 |
| 208 | Light Switch - SPST | 24238-000 | 4 |
| 209 | Receptacle - GFCI 5-15 | 15147-002 | 1 |
| 210 | Receptacle - L6-20 | 56281-000 | 1 |
| 211 | Circuit Breaker - 20A 2P | 57030-001 | 1 |
| 212 | Strap, Ground Buss/Mtg. | 64045-002 | 2 |
| 213 | Strap, Ground Buss/Mtg. | 64045-003 | 2 |
| 214 | *Ground Terminal | 64211-000 | 1 |

* Not Illustrated

* Not Illustrated

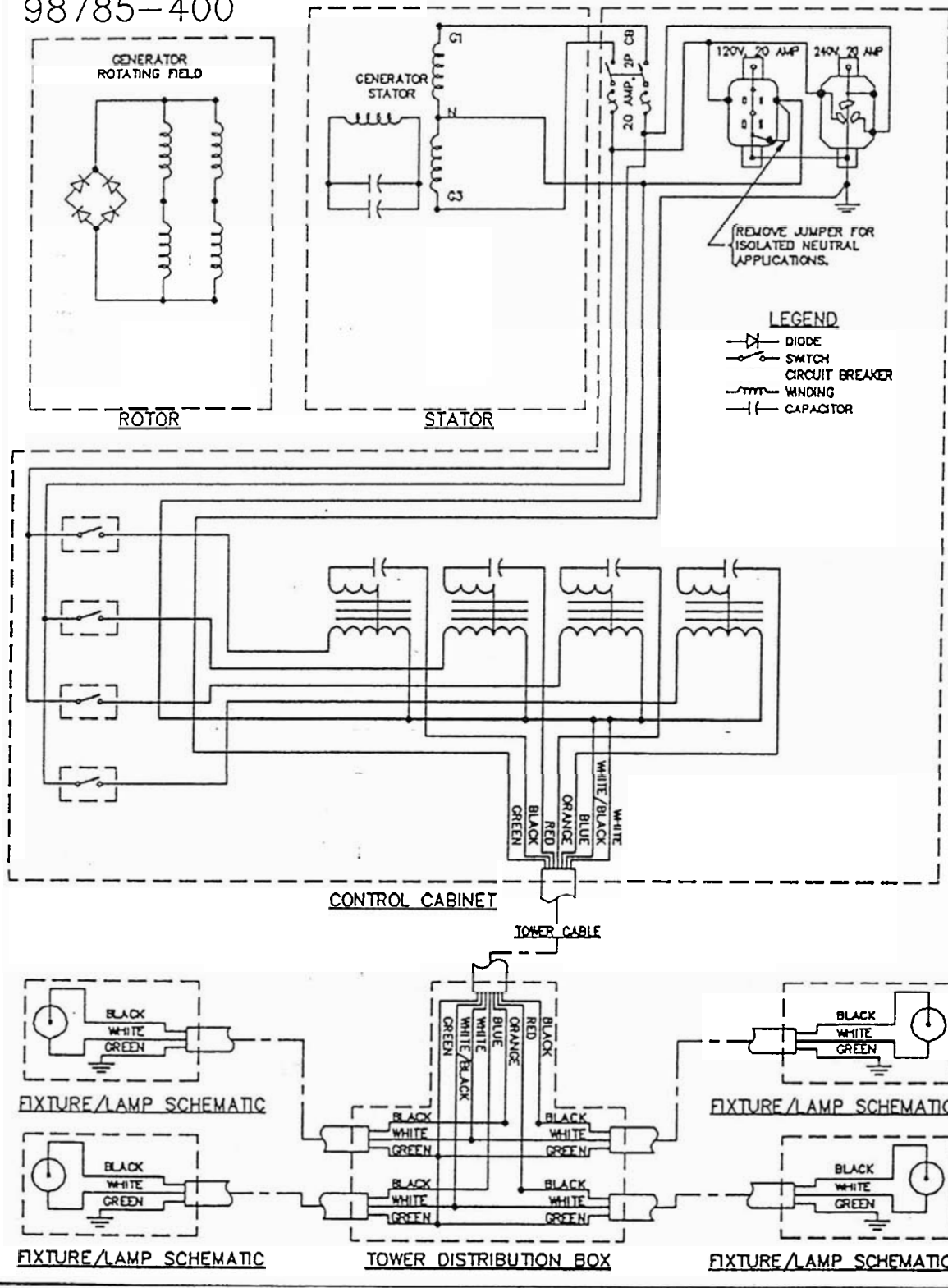


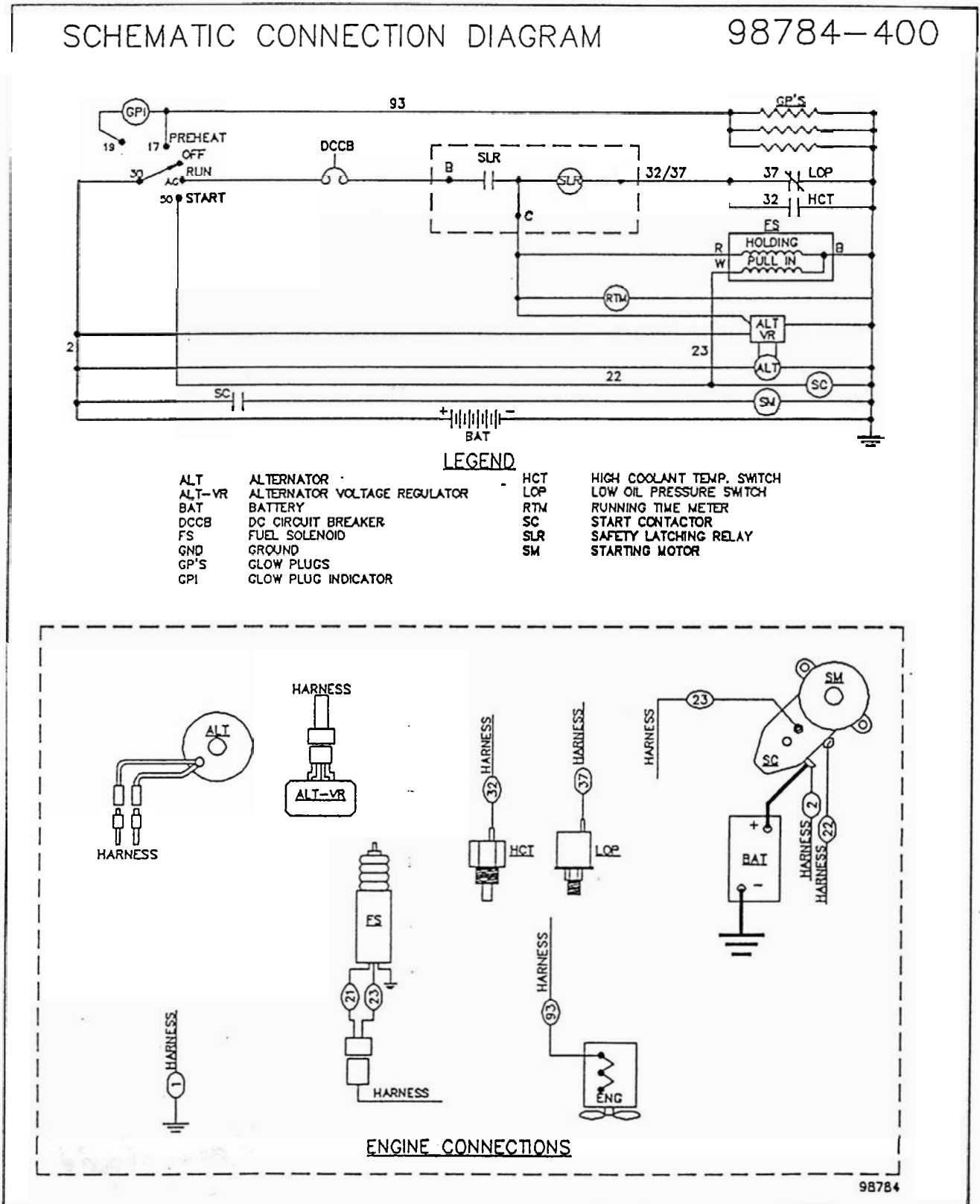
98722-400 Housing and Fuel Tank Installation

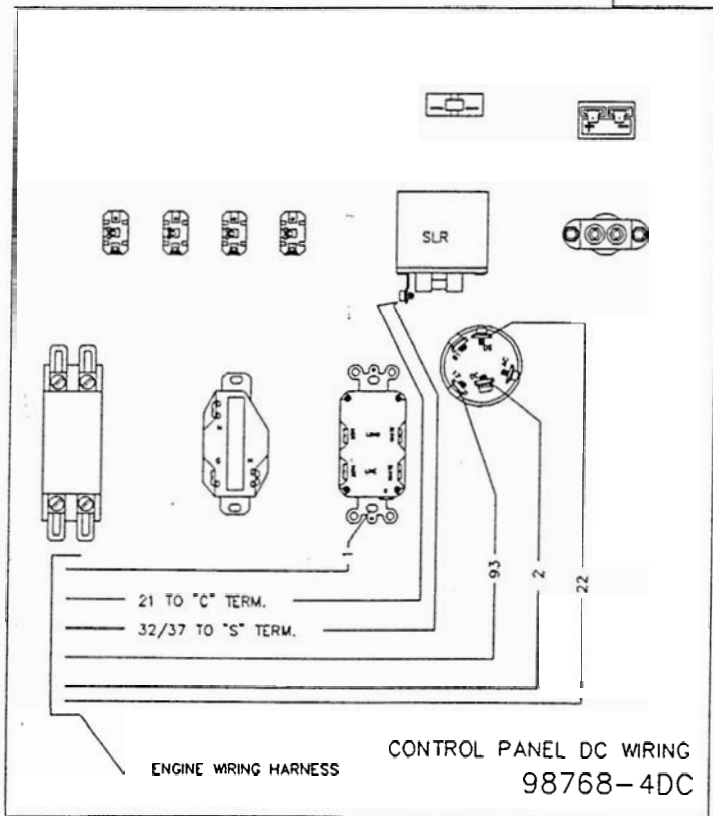
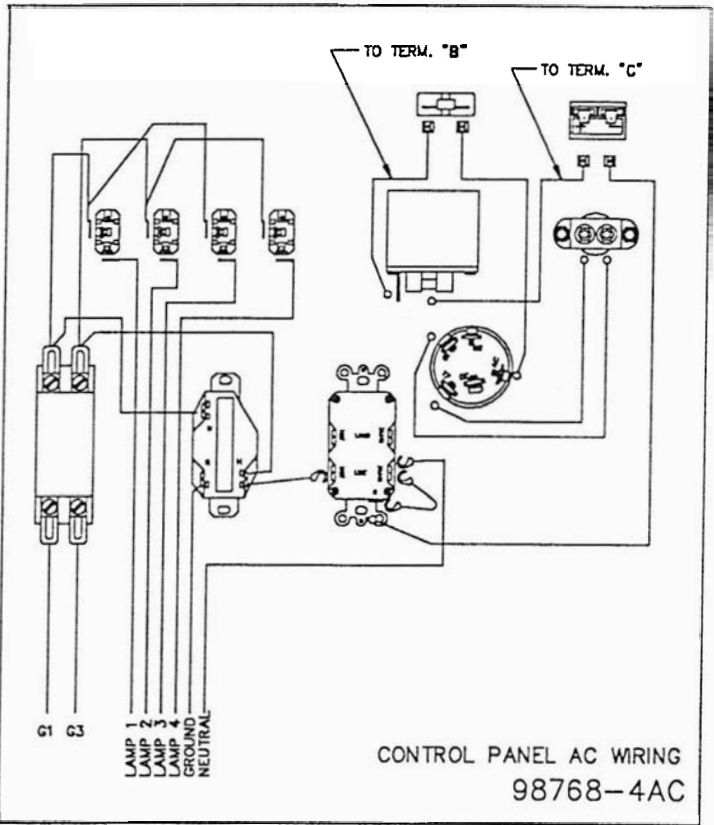
98723-400 Trailer Assembly

| Ref | Description | Part No. | Qty | Ref | Description | Part No. | Qty |
|-----|-----------------------|-----------|-----|-----|--------------------------|-----------|-----|
| 101 | Housing Front Panel | 98727-000 | 1 | 138 | Cap and Gage, Fuel Tank | 98729-000 | 1 |
| 102 | Housing Rear Panel | 98737-000 | 1 | 143 | Bumper | 91425-000 | 24 |
| 103 | Housing Side Panel | 98717-000 | 2 | 201 | Frame Weldment | 98713-000 | 1 |
| 104 | Housing Roof | 98739-000 | 1 | 202 | Axle Assembly | 98724-000 | 1 |
| 105 | Right Door | 98738-001 | 1 | 203 | Tire and Rim Assembly | 98726-000 | 2 |
| 106 | Left Door | 98738-002 | 1 | 204 | Tower Bumper | 96929-000 | 1 |
| 107 | Latch Assembly | 98805-000 | 4 | 205 | Flat Washer - 1/2" | 21867-000 | 1 |
| 113 | Hinge | 98742-000 | 4 | 206 | HHCS - 1/2-13 X 4 | 91083-006 | 1 |
| 117 | Hook and Catch Plate | 98770-000 | 2 | 207 | Spring | 08909-000 | 1 |
| 119 | Tower Cradle Assembly | 98702-400 | 1 | 208 | Locking Compound - 3 oz. | 81589-000 | 1 |
| 126 | Tank Support | 98740-000 | 1 | 209 | Tongue and Hitch Weldmnt | 98715-000 | 1 |
| 128 | Grommet | 23197-000 | 1 | 211 | Outrigger Weldment | 98685-000 | 2 |
| 129 | Fuel Tank | 98307-001 | 1 | 212 | Rear Jack Weldment | 98769-000 | 1 |
| 130 | Hold Down, Fuel Tank | 98759-000 | 1 | 220 | Tongue Jack Weldment | 98782-000 | 1 |
| 133 | Fuel Valve | 98771-000 | 1 | 221 | Jack, 'Side Winder' | 93180-001 | 2 |
| 134 | Elbow, Fuel | 98435-000 | 1 | 222 | Jack, 'Top Winder' | 93180-000 | 2 |
| 135 | Bushing | 62409-000 | 1 | 223 | Safety Chain | 92043-001 | 2 |
| 136 | Fuel Hose - 1/4" X 36 | 40078-000 | 1 | 224 | Hook, Chain -W/Pin & Key | 92061-000 | 2 |
| 137 | Clamp, Hose | 81018-009 | 4 | | | | |

A.C. SCHEMATIC
98785-400







WINGO®
 INCORPORATED
 225 South Cordova Avenue
 Le Center, Minnesota 56057
 1-800-433-8123 / 612-357-6821