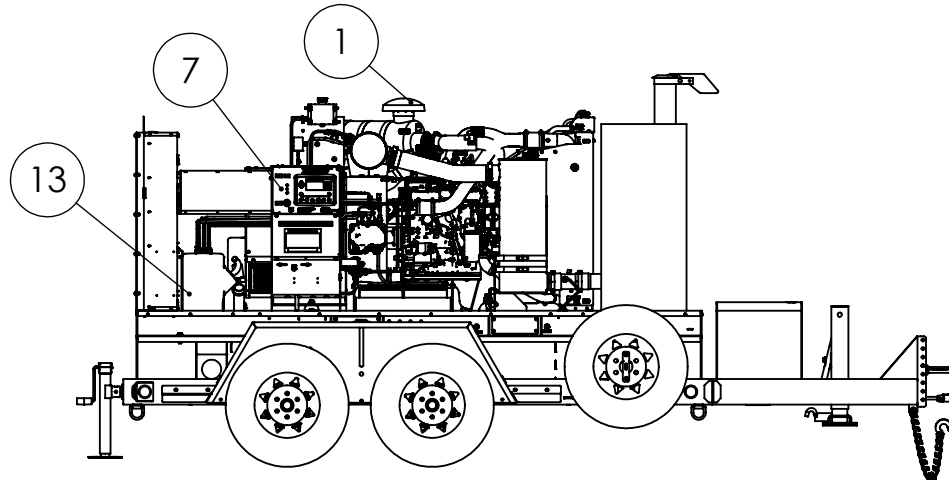
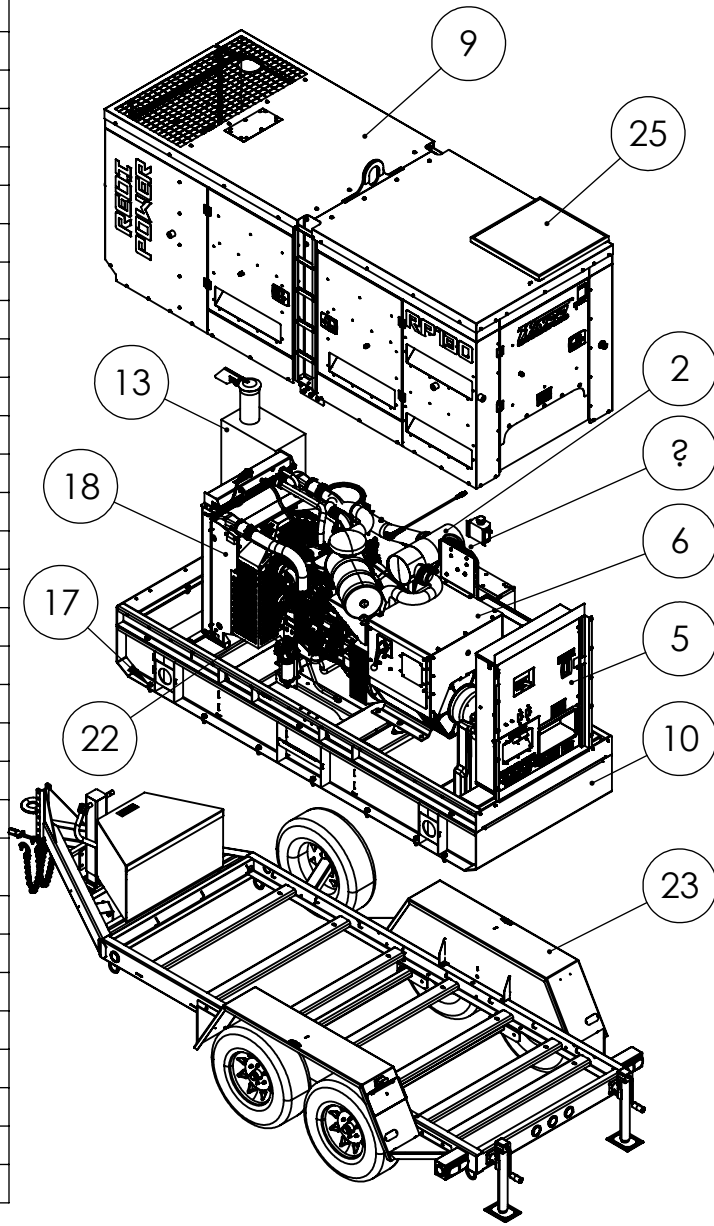


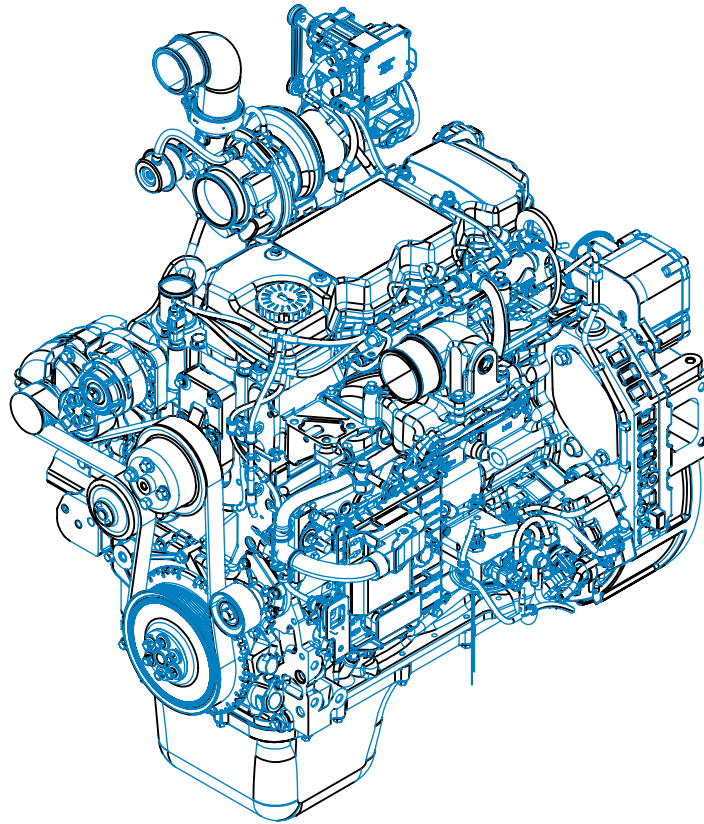
WINCO Service
Phone: 507-357-6831
Email: service@wincogen.com
www.wincogen.com

General Assembly

ITEM NO.	PART NUMBER	DESCRIPTION	QTY.
1	6-122	AIR FILTER KIT	1
2	6-237	EMISSIONS KIT NEF45ENTZW69.00	1
3	6-240	MISC KIT NEF45ENTZW69.00	1
4	6-266	RADIATOR PACKAGE ASSEMBLY	1
5	1000-0812	RP130 RECEPTACLE ASSEMBLY	1
6	1000-0830	GEN END PANEL ASSEMBLY	1
7	1000-0853	CONTROL PEDESTAL ASSEMBLY	1
8	1000-0854	RP130 BATTERY TRAY ASSEMBLY	1
9	1000-0855	RP130 HOUSING ASSEMBLY	1
10	1000-0970	ASSY, SKID RP130	1
11	1000-0971	ASSY, HARDWARE, RP130	1
12	1000-1011	DEF TANK BASE ASSY	1
13	1000-1130	ASSY, EXHAUST SYSTEM, RP130	1
14	1000-1131	DEF AND COOLANT LINE ASSEMBLY	1
15	1000-1132	HARDWARE, ATS COMPONENTS RP130	1
16	1000-3019	LED LIGHT KIT 24V	1
17	1000-3036	TRAILER MOUNTING KIT	1
18	2000-0198	RADIATOR WITH HORTON MOD	1
19	16346-405	HORTON FAN CLUTCH ASSEMBLY	1
20	16505-011	NAME PLATE	1
21	16506-004	NAME PLATE OVERLAY	1
22	350001-93	ENGINE, FPT, N45ENTZW69, TIER 4 FINAL	1
23	350146-79	10000 TANDEM AXLE TRAILER, RP130	1
24	352020-25	24 VOLT 8 AMP BATTERY CHARGER KIT	1
25	405020-012	RP SOLAR PANEL KIT, 24V	1
26	411130-003	ENGINE HARNESS	1
27	411130-000	ENGINE HARNESS	1
28	300515-4	ANTIFREEZE PER GAL	2.92
29	300515-40	5W-40 OIL PER GALLON	4.75
30	300515-50	DEF FLUID, UREA PER GAL	2.5

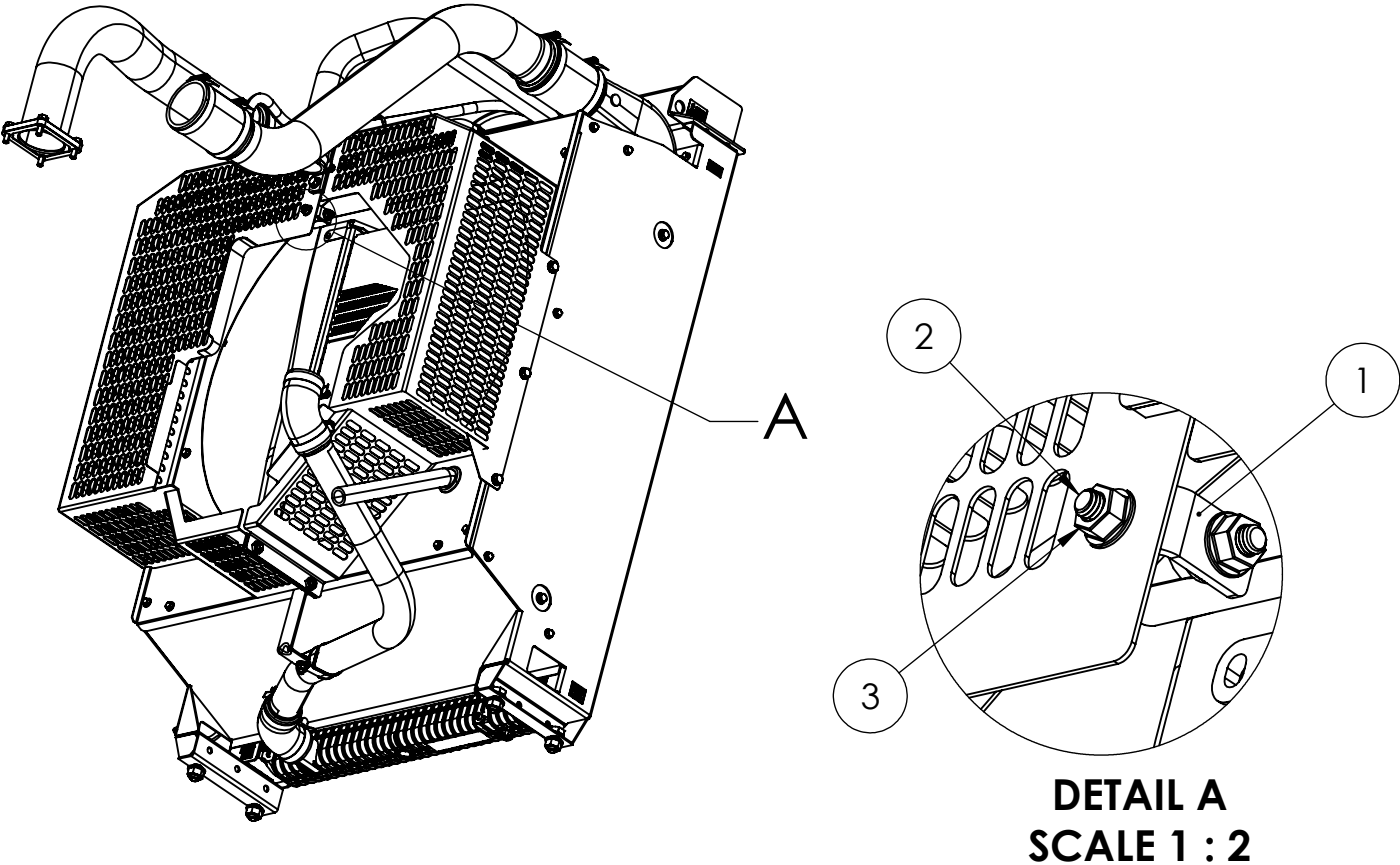


Engine



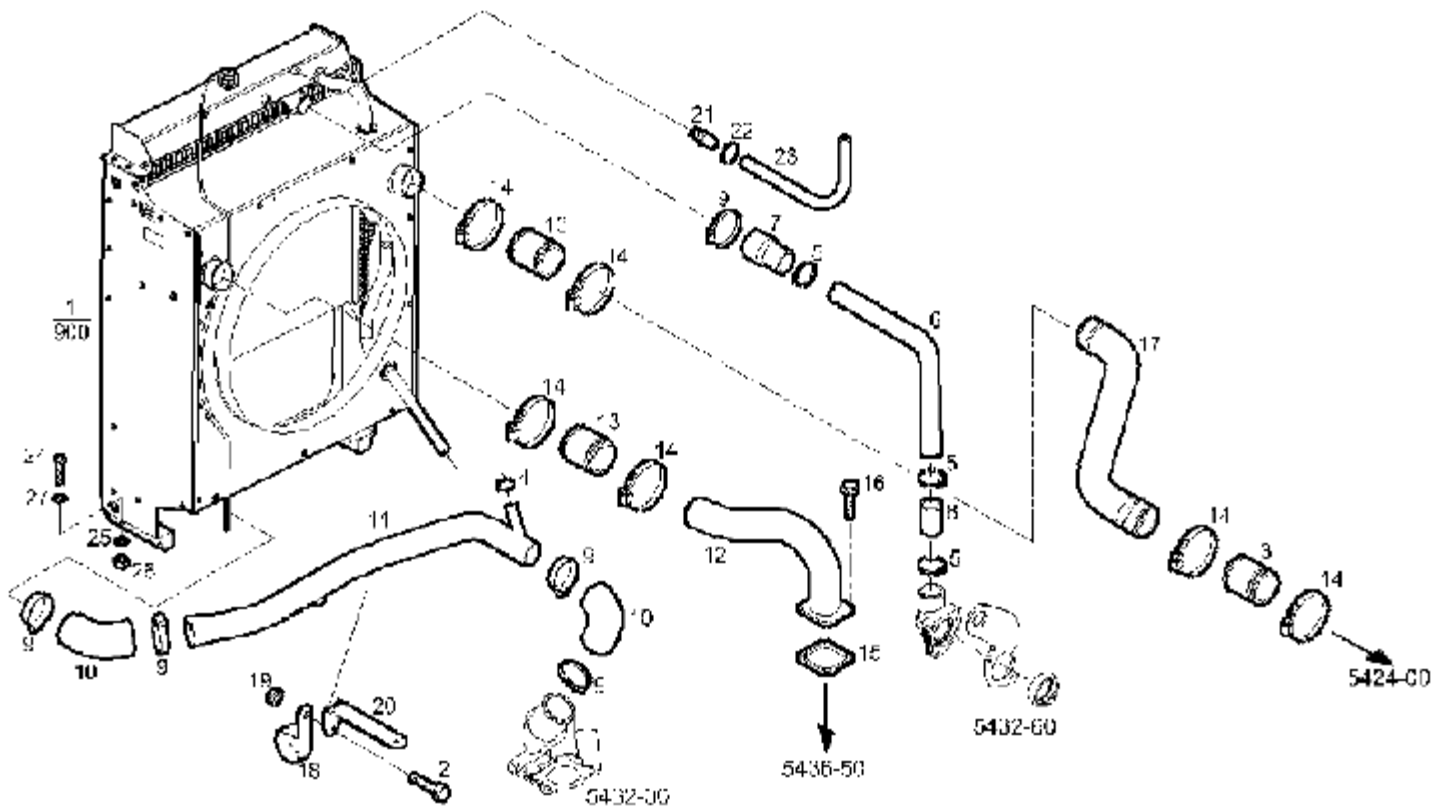
350001-93, N45ENTZW69.00 (Tier IV Final)			
WATER-COOLED ENGINES (Diesel)			
ITEM NO.	PART NUMBER	DESCRIPTION	QTY.
1	6-221	AIR FILTER (OUTER)	1
2	6-222	AIR FILTER (INNER)	1
3	6-193	OIL FILTER	1
4	6-194	FUEL FILTER	1
5	6-140	FUEL FILTER (WATER SEPARATOR)	1
6	6-342	STARTER MOTOR	1
7	6-341	ALTERNATOR	1
8	6-343	ALTERNATOR BELT	1
9	6-296	THERMOSTAT	1
10	6-224	THERMOSTAT GASKET	1
11	6-287	SENSOR, CRANKSHAFT POSITION	1
12	6-288	SENSOR, CAMSHAFT POSITION	1
13	6-299	SWITH, OIL PRESSURE	1
14	6-289	SENSOR, WATER TEMPERATURE	1
15	6-290	SENSOR, AIR BOOST PRESSURE/TEMPERATURE	1
Contact Winco service for full engine parts support.			

Radiator Assembly



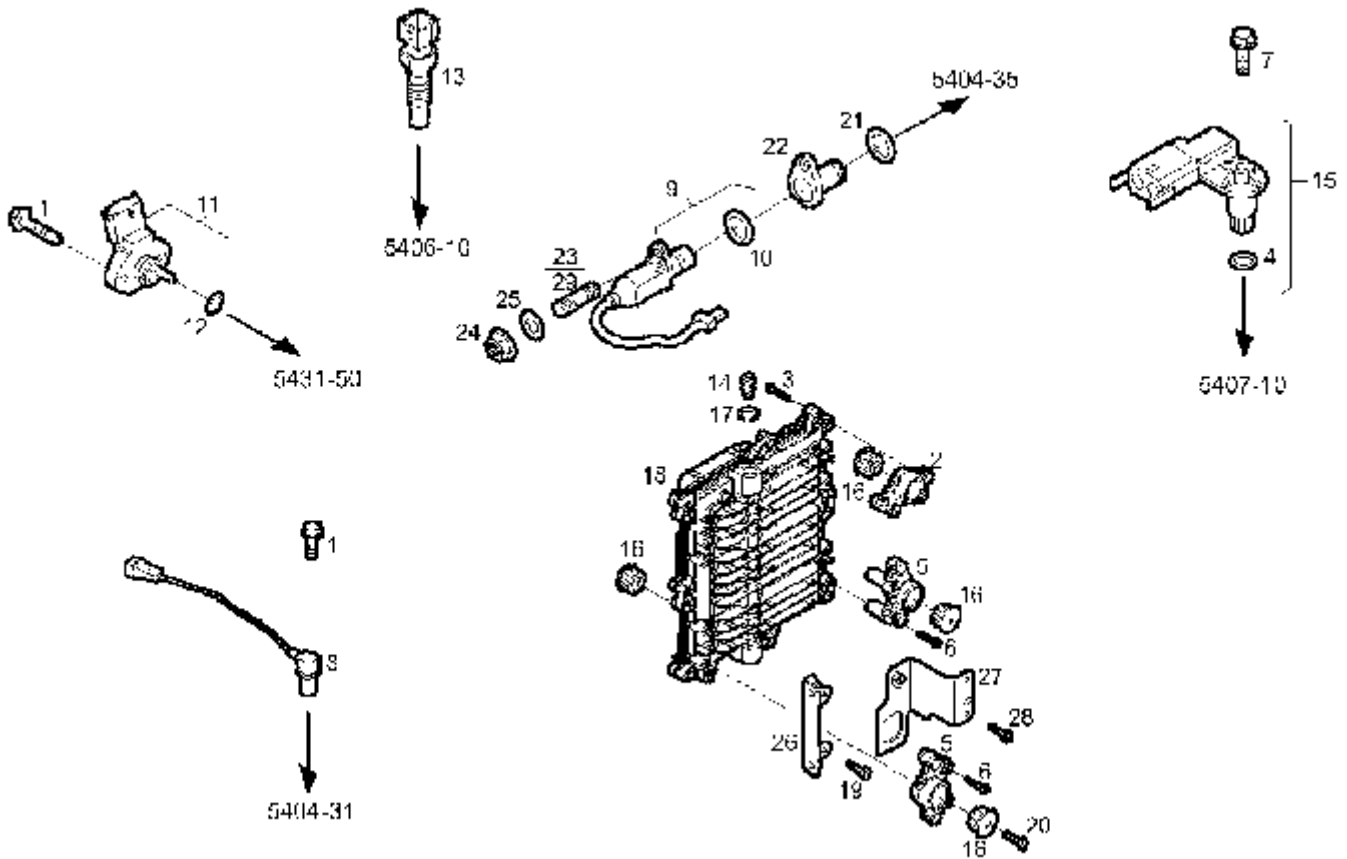
ITEM NO.	PART NUMBER	DESCRIPTION	QTY.
1	2000-0206	CLUTCH FAN ENGINE BLOCK ANCHOR	1
2	352121-1	FHCS 5/16-18X 3/4 GRADE 5	2
3	16249-000	.3125-18 FLANGE	2

Radiator Assembly Continued



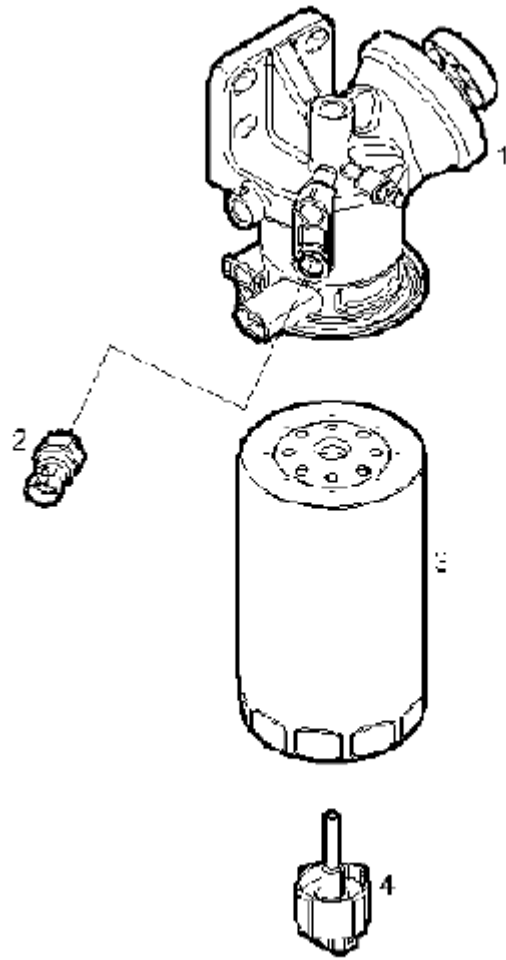
ITEM NO.	PART NUMBER	DESCRIPTION	QTY.
3	6-300	RUBBER SLEEVE	1
7	6-301	WATER HOSE	1
8	6-179	RUBBER SLEEVE	1
10	6-302	WATER HOSE	2
13	6-303	RUBBER SLEEVE	2
23	6-304	HOSE	1

Sensors



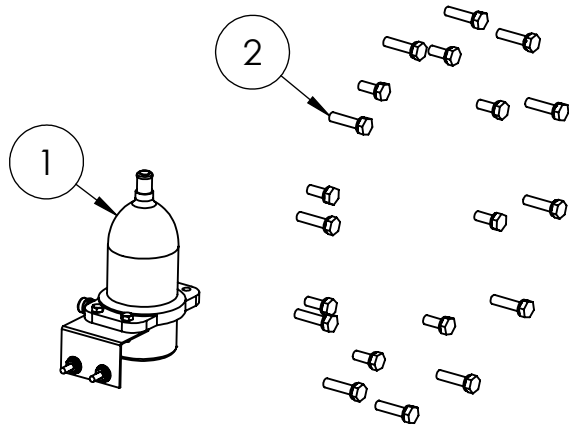
ITEM NO.	PART NUMBER	DESCRIPTION	QTY.
8	6-287	SPEED SENSOR	1
9	6-288	SPEED SENSOR	1
11	6-299	PRESSURE SWITCH	1
13	6-289	SENSOR	1
15	6-290	SENSOR	1

WATER SEPERATOR



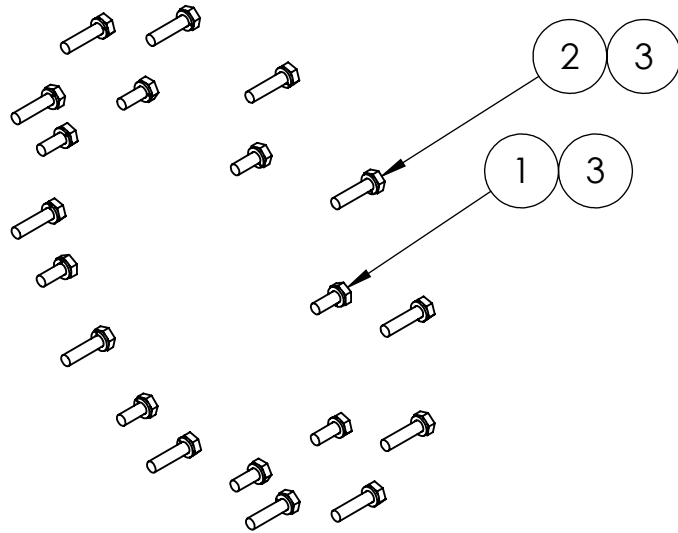
ITEM NO.	PART NUMBER	DESCRIPTION	QTY.
2	6-292	THERMOSTAT	1
3	6-140	FUEL PRE FILTER CARTRIDGE	1
4	6-267	SENSOR	1

Hardware Assembly



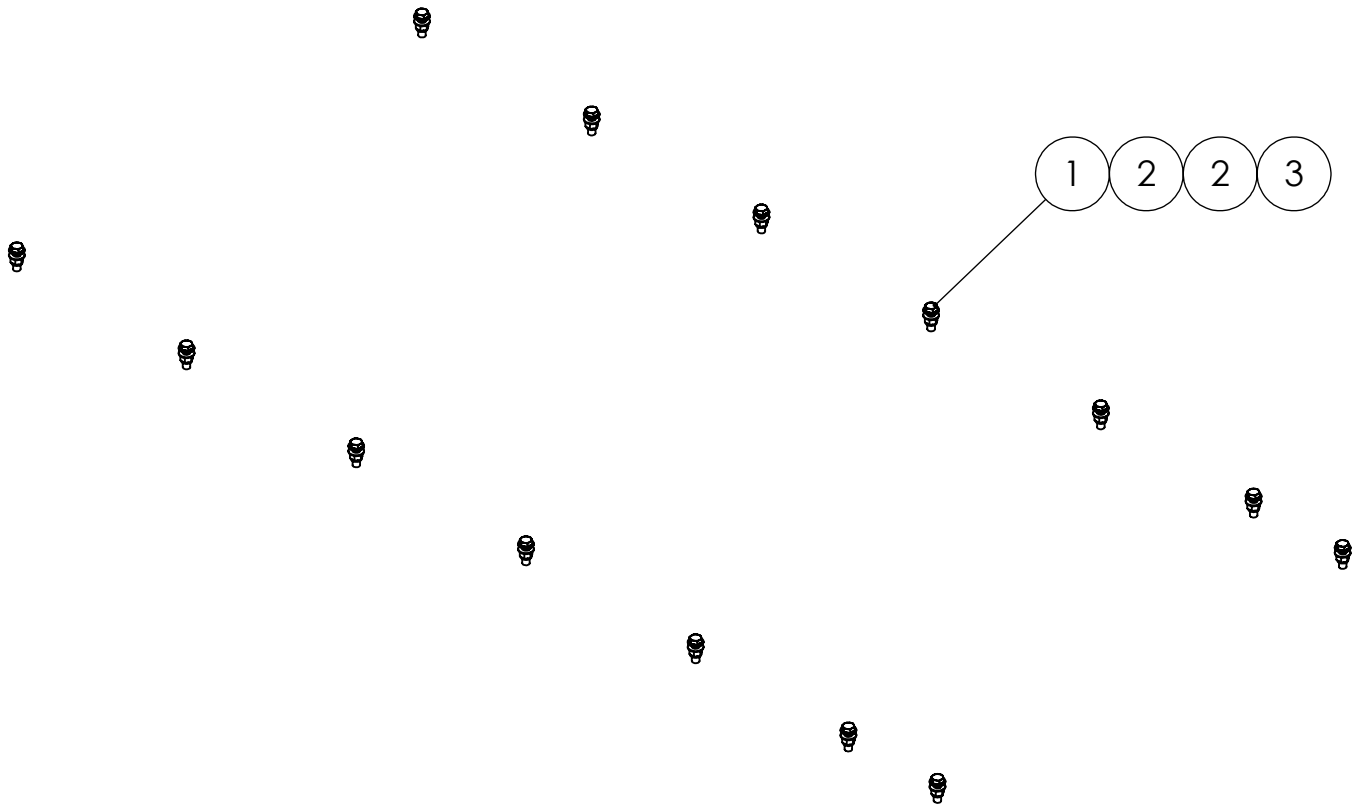
ITEM NO.	PART NUMBER	DESCRIPTION	QTY.
1	80781-018	BLOCK HEATER WITH THERMOSTAT ASSY	1
2	1000-0431	COUPLING KIT	1

Coupling Kit



ITEM NO.	PART NUMBER	DESCRIPTION	QTY.
1	96003-025	M10-1.5X25MM	8
2	96003-040	HHCS M10-1.5X 40MM BLACK	12
3	97436-010	M10 LOCKWASHER	20

Trailer Mounting Kit

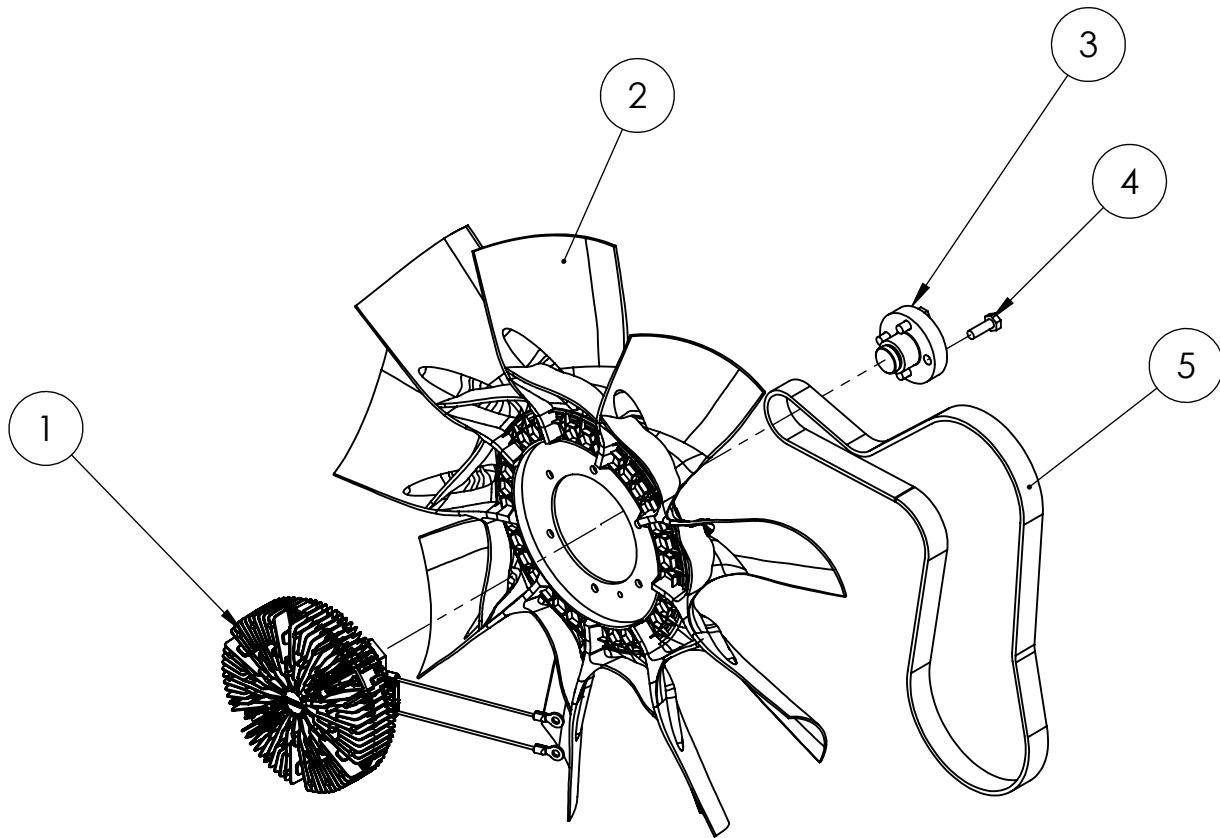


ITEM NO.	PART NUMBER	DESCRIPTION	QTY.
1	91083-004	.625-11X2 HHCS GR5	14
2	516-000	FLAT WASHER 5/8 I.D. 1.31 O.D. STEEL ZINC	28
3	95468-000	.625-11 NYLOCK	14

Fuel System Continued

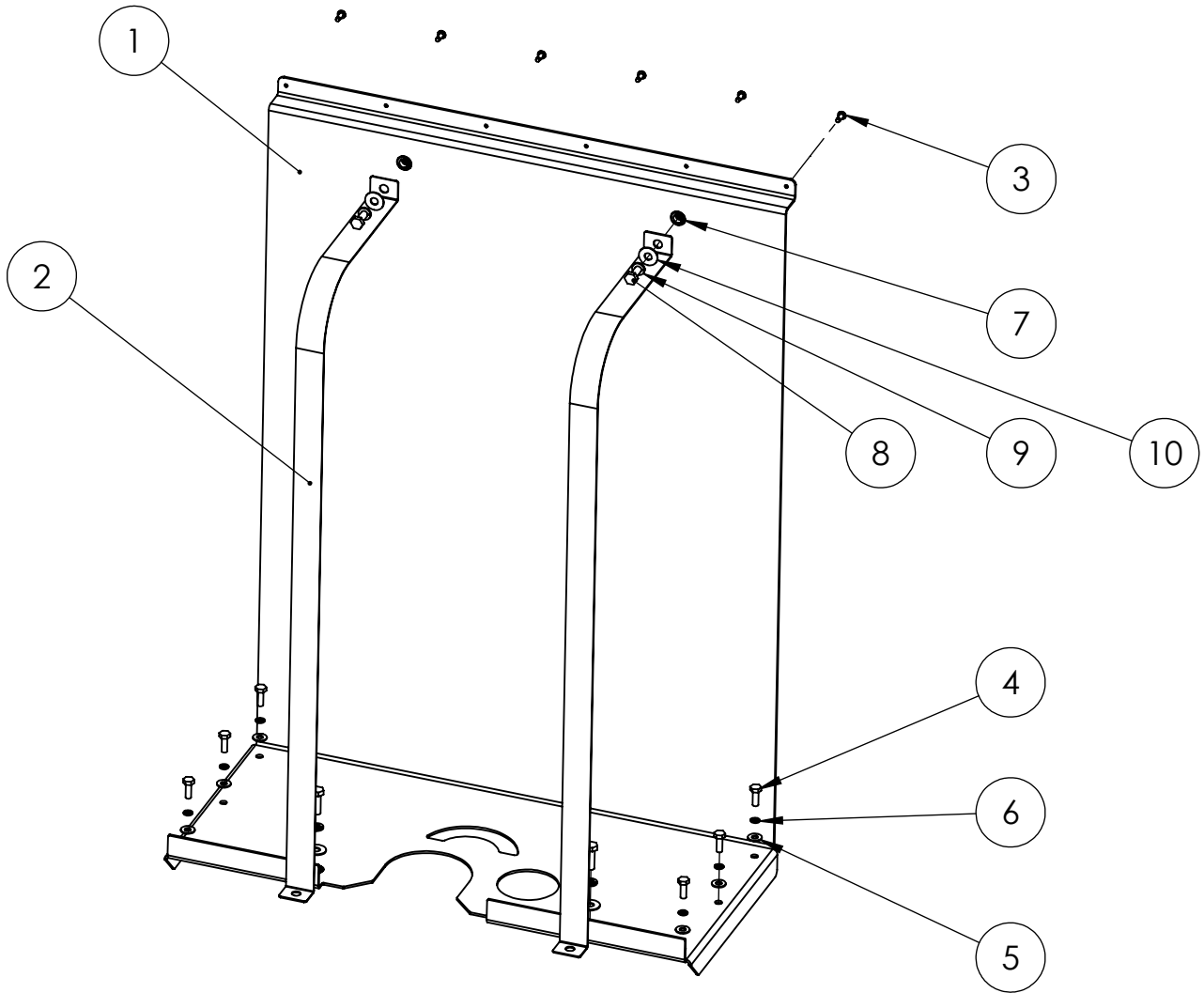
ITEM NO.	PART NUMBER	DESCRIPTION	QTY.
1	1000-0818	RP130 MAIN FRAME	1
2	1000-0831	LEFT SIDE ENGINE MOUNT WELDMENT	1
3	1000-0832	RIGHT SIDE ENGINE MOUNT WELDMENT	1
4	350041-145	RP130 FUEL TANK SKID	1
5	1000-1287	BAFFLE, RADIATOR PANEL	1
6	98956-002	SHOCKMOUNT 50 DURO (YELLOW DOT)	4
7	1000-1004	RADIATOR FILL PANEL, RP130	1
8	94319-012	2" NPT X 2" HOSE, BARBED, ZINC	1
9	49409-018	2" FUEL HOSE 45° ELBOW	1
10	92388-001	HOSE FIT 1/2 NPT X 5/8 HOSE	1
11	93689-001	HOSE, 0.625 ID, 20 IN. LONG	1
12	1516-000	.5-13X1.25 HHB	10
13	21867-001	FLAT WASHER .51 X .88 X .05	12
14	16248-001	.5-13 FLANGE NUT	10
15	1744-000	NUT HEX 1/2-13	4
16	57580-000	.5-13X1.5 HHB	4
17	636-000	LOCKWASHER 1/2 SPLIT	8
18	21867-000	FLAT WASHER	4
19	65000-001	.25-20X.75 SS HHCS	24
20	96286-010	18-8 SS W/ NEOPRENE SEALING WASHER, .275 X .625	16
21	65005-000	.25 WASHER SS	8
22	65003-000	SS LOCK WASHER ID.25 OD.475 TH.07	8
23	95468-000	.625-11 NYLOCK	8
24	91083-004	.625-11X2 HHCS GR5	8
25	516-000	FLAT WASHER 5/8 I.D. 1.31 O.D. STEEL ZINC	16
26	93084-000	PIPE PLUG .50 GALV	5
27	81018-002	HOSE CLAMP 3-2.0625	2
28	81018-005	HOSE CLAMP 1.0625-.500	2
29	15750-009	FUEL SUPPLY DECAL	1
30	15750-010	FUEL RETURN DECAL	1
31	15750-008	OIL DRAIN DECAL	1
32	15750-007	COOLANT DECAL	1
33	352125-2	RIVET NUT 1/4-20 .165-.260	59
34	1000-2457	FUEL PRE FILTER MOUNTING BRACKET	1
35	96187-001	OIL DRAIN GASKET M14 ID	2
36	300349-1	OIL DRAIN ADAPTER	2
37	99875-000	ELBOW-STREET 3/8NPT 90DEG BRASS	1
38	94319-007	HOSE FIT. .375-18NPT X .375 HOSE BARB	2
39	81018-006	HOSE CLAMP 7/8 TO 3/8 X 1/2 WIDE	2
40	526-000	5/16 FLAT WASHER	3
41	580-000	5/16-18X1.25	3
42	16249-000	.3125-18 FLANGE	5
43	467-000	HHCS 5/16-18X.75	2
44	81584-000	LEAD WIRE ASSEMBLY	1
45	81584-001	LEAD WIRE ASSEMBLY	1
46	20039-000	LOCKWASHER 1/2 EXTERNAL TOOTH	4
47	96003-025	M10-1.5X25MM	1
48	96003-042	HHCS M12-1.75X40MM, ZINC, GR. 8.8	1
49	1000-0895	FORK POCKET BLANK COVER	4

Horton Fan / Clutch Assembly



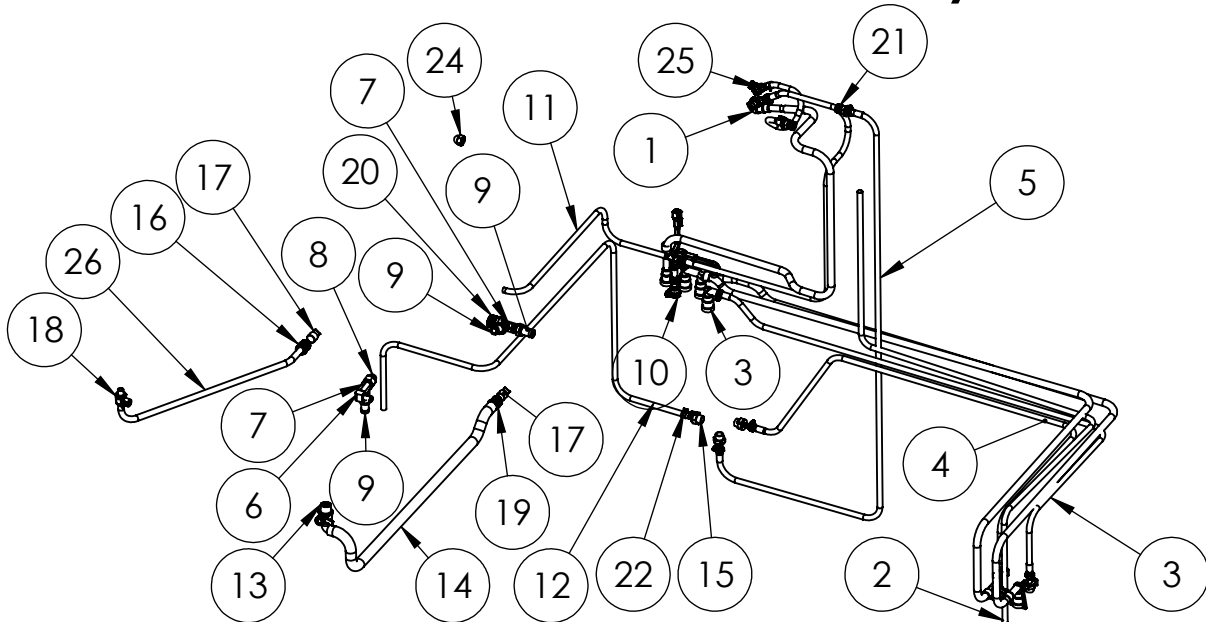
ITEM NO.	PART NUMBER	DESCRIPTION	QTY.
1	16346-406	LCV80R HORTON FAN DRIVE	1
2	16346-407	MS9 HORTON FAN	1
3	16346-408	CLUTCH ADAPTOR, NEF67TIVF	1
4	96003-030	M10-1.5X30MM	4
5	92617-015	8PK1505HD V RIBBED BELT	1
6	16346-410	HORTON CONTROLLER, NEF67TIVF	1
7	6-259	PULLEY CNH 504083374	1
8	16346-409	HORTON WIRING HARNESS, NEF67TIVF	1

DEF Tank Base Assembly



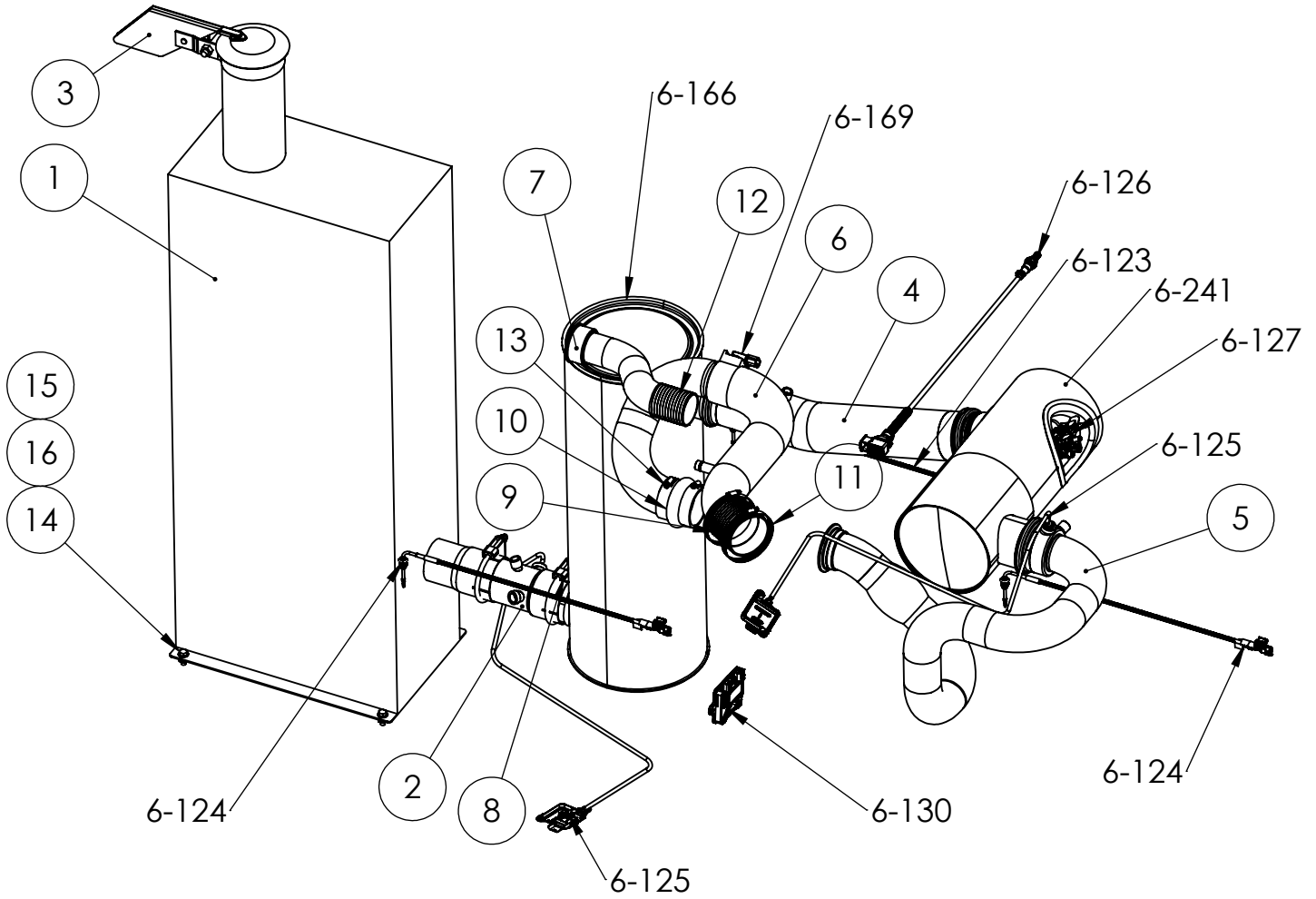
ITEM NO.	PART NUMBER	DESCRIPTION	QTY.
1	1000-0849	DEF TANK BASE	1
2	1000-0857	RP130 DEF TANK STRAP	2
3	21698-001	TORX PAN HEAD SCREW #10	6
4	466-000	.25-20X.75 HHB	6
5	512-000	.25 WASHER	6
6	479-000	LOCK WASHER, .25" SPLIT	6
7	352126-1	RIVET NUT 5/16-18 .027-.150	4
8	65001-002	.3125-18X1 HHB SS	4
9	480-000	5/16 SPLIT LOCKWASHER	4
10	65005-001	5/16 WASHER SS	4

DEF & Coolant Line Assembly



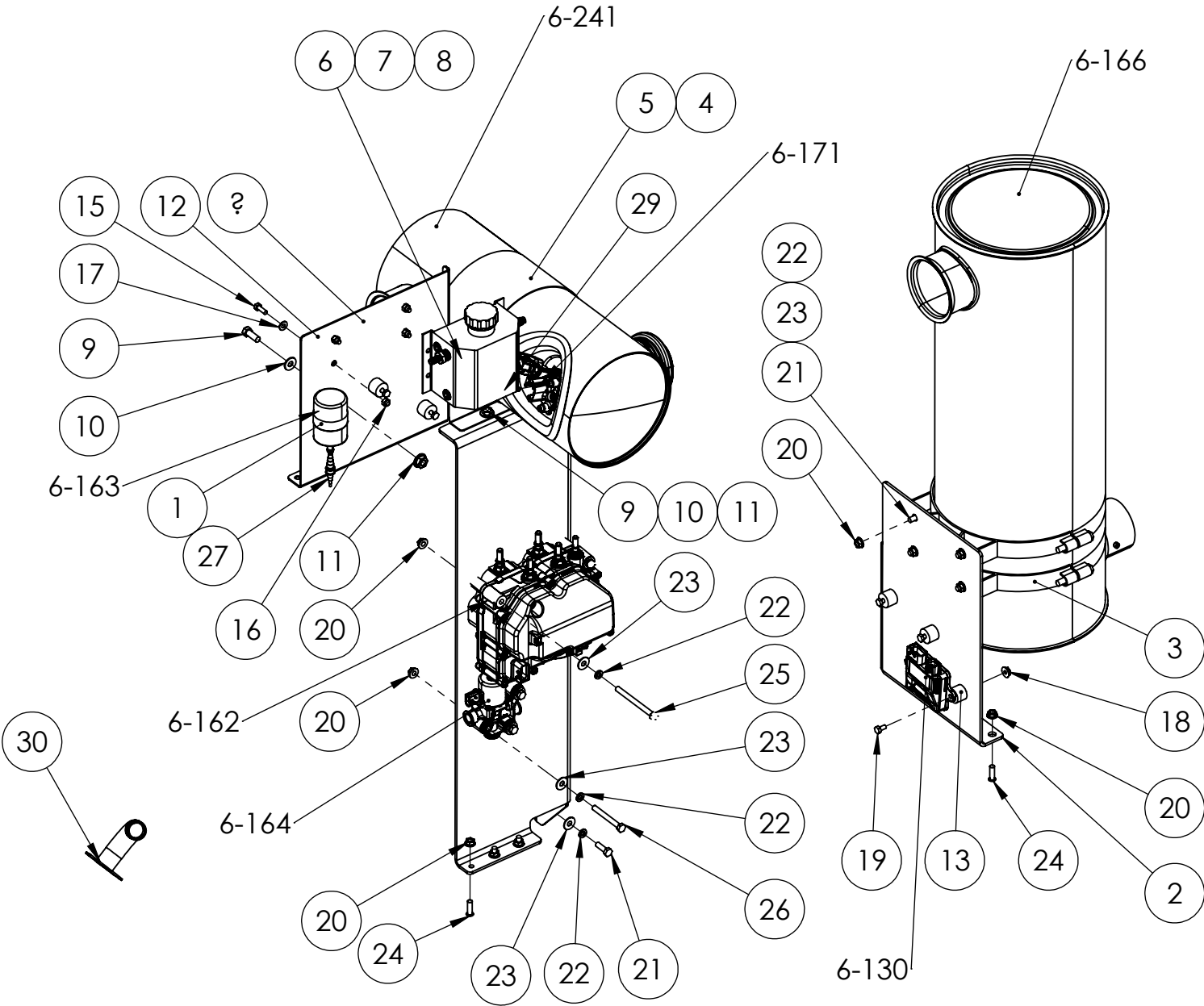
ITEM NO.	PART NUMBER	DESCRIPTION	QTY.
1	1000-1043	DEF LINE ASSY, SUPPLY MODULE TO DOSING MODULE	1
2	1000-1044	RP130 DEF TANK VENT LINE	1
3	1000-1056	COOLANT LINE ASSY, WEMA TO SM (SUPPLY)	1
4	1000-1058	COOLANT LINE ASSY, ENGINE TO WEMA (SUPPLY)	1
5	1000-1060	COOLANT LINE ASSY, ENGINE TO DM (SUPPLY)	1
6	92382-007	HOSE FIT.EL. .375NPT X .375 HOSE 90DEG.BRASS	1
7	99967-000	STREET TEE FITTING	2
8	300349-6	ADAPTER M16X1.5(M) X 3/8-18NPT (F)	1
9	72302-010	HOSE FIT. .375 NPT X .625 HOSE BARB	3
10	1000-1062	COOLANT LINE ASSY, DM TO ENGINE (RETURN)	1
11	55505-000	.375 RUBBER HOSE, 22IN	1
12	55505-000	.375 RUBBER HOSE, 62IN	1
13	98906-018	OIL DRAIN VALVE M22 X 5/8 90HB	1
14	56107-026	RED HOSE 5/8"ID 26" LONG	1
15	20887-008	VOSS SV246, NG12 TO 3/8" HOSE BARB	1
16	94319-008	HOSE FIT. .500-14NPT X .375 HOSE BARB	1
17	93084-000	PIPE PLUG .50 GALV	2
18	98906-011	OIL DRAIN VALVE M16-1.5	1
19	72302-009	HOSE FIT. .500-14NPT X .625 HOSE BARB	1
20	63788-000	HEX. REDU. BUSH. .375 X .75	1
21	94319-007	HOSE FIT. .375-18NPT X .375 HOSE BARB	2
22	62999-001	HOSE CLAMP .50 OD SPRING STEEL RED	2
23	1000-1286	DEF SUCTION AND RETURN HEATED LINE SET	1
24	99874-009	DYNAPEX M12 X 1.5MM BANJO CAP NUT	1
25	1000-1103	COOLANT CANISTER TO DOSING MODULE	1
26	55505-000	HOSE .375 ID 24 INCH	48
27	93689-001	HOSE, 0.625 ID, PER INCH	36
28	93689-001	HOSE 44"	1

Exhaust System



ITEM NO.	PART NUMBER	DESCRIPTION	QTY.
1	1000-0899	SILENCER RP130	1
2	1000-0863	EXHAUST PIPE	1
3	53111-015	5" RAIN CAP	1
4	1000-0864	SCR PIPE	1
5	1000-0866	TURBO DOWN PIPE	1
6	1000-0852	TURBO INLET PIPE	1
7	1000-0804	TURBO TO CAC PIPE	1
8	93489-000	3.5" EXHAUST CLAMP	2
9	352104-8	3.5" SILICONE INTAKE COUPLER	1
10	352104-34	3.0" SILICONE INTAKE COUPLER	1
11	81018-010	HOSE CLAMP 3.5625" TO 4.5"	2
12	352104-7	2.5" SILICONE INTAKE COUPLER	1
13	81018-003	HOSE CLAMP 3.5 TO 2.5 X 1/2 WIDE	2
14	65002-001	.375-16X.75 HHB SS	4
15	65006-002	5/16"-18 FLANGE NUT SS	4
16	65005-002	.375 FLATWASHER SS	4

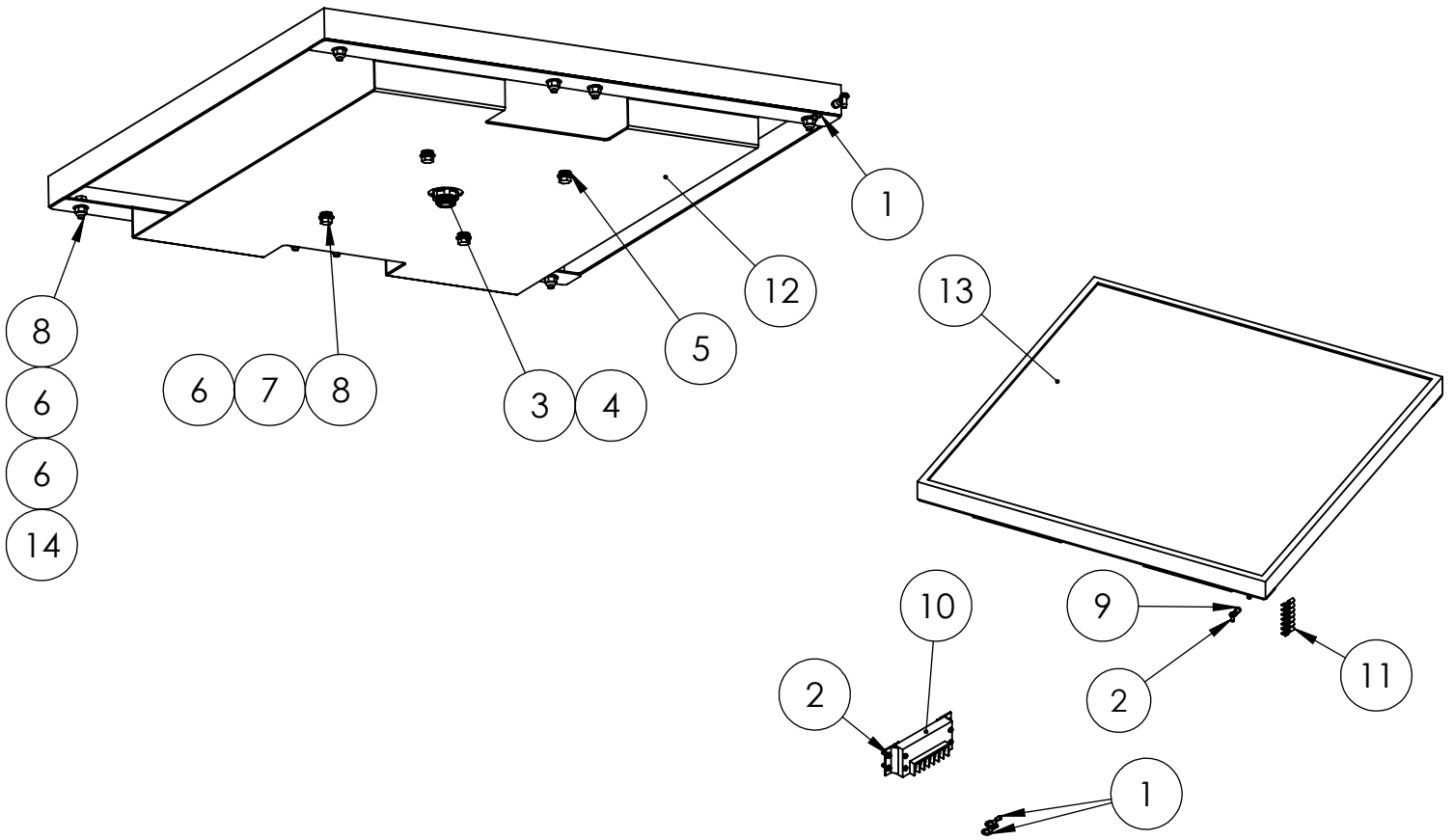
After Treatment System



After Treatment System Continued.

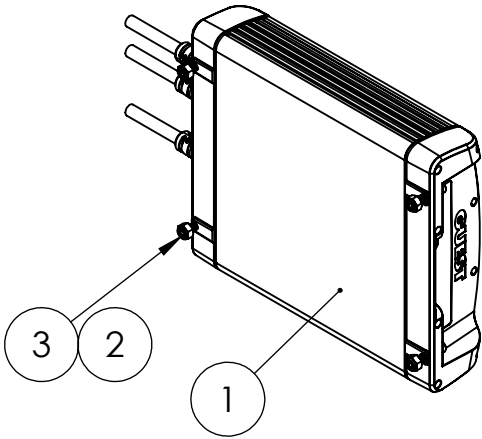
ITEM NO.	PART NUMBER	DESCRIPTION	QTY.
1	15374-004	2" TUBE CLAMP	1
2	1000-1017	SCR SUPPORT	1
3	350264-14	MUFFLER MOUNTING BRAK CET 11"	2
4	1000-0805	DOC BRACKET ASSEMBLY	1
5	1000-0807	WELDABLE DOC CURVED BRACKET	1
6	466-000	.25-20X.75 HHB	4
7	512-000	.25 WASHER	4
8	16248-000	.25-20 FLANGE NUT	4
9	91658-001	HHCS 3/8-16X1	3
10	526-000	WASHER ID .375 OD .890	3
11	16250-000	.375-16 FLANGE NUT	3
12	1000-1020	DEF TANK VENT SUPPORT	1
13	64062-002	SHOCKMOUNT .25 50 DURO	6
14	1000-1495	RP130 DM COOLANT OVERFLOW TANK	1
15	65000-001	.25-20X.75 SS HHCS	4
16	47517-000	.25-20 NYLOCK	4
17	65005-000	.25 WASHER SS	8
18	65006-000	.25-20 FLANGE NUT SS	6
19	463-000	HEX BOLT .25-20X.50	6
20	16249-000	.3125-18 FLANGE	21
21	65001-002	.3125-18X1 HHB SS	6
22	480-000	5/16 SPLIT LOCKWASHER	12
23	65005-001	5/16 WASHER SS	12
24	94304-001	THREAD STUD .3125-18X1	9
25	91107-001	HHCS .3125-18 X 3.75	3
26	51101-000	.3125-18 X 2.75 HHCS	3
27	98590-003	HOSE REDUCER 1/8-5/16 X 1/4-716	1
28	1000-0896	DOC SCR SUPPORT	1
29	64616-021	M6 X 35 BLACK OXIDE SOCKET HEAD CAPSCREW	3
30	1000-3013	DEF TANK 90 NECK WELDMENT	1

Solar Panel Kit



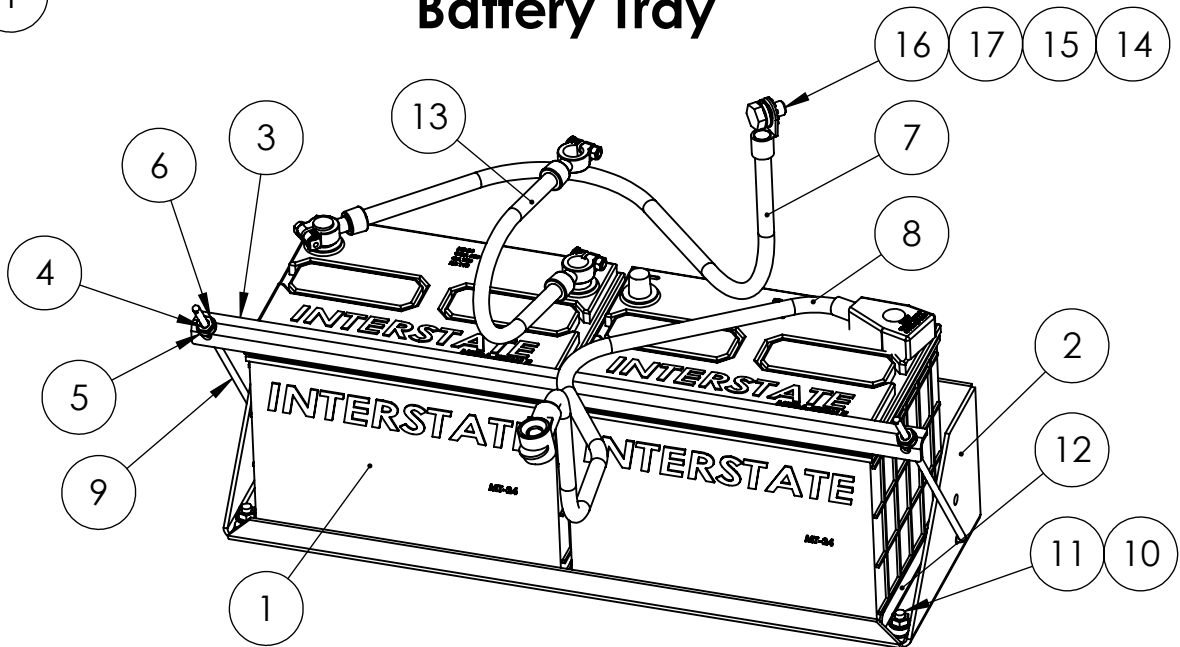
ITEM NO.	PART NUMBER	DESCRIPTION	QTY.
1	7547-000	TERMINAL RING 16/14AWG .375 STUD	3
2	21698-001	TORX PAN HEAD SCREW #10	5
3	93073-030	CORD GRIP .5NPT	1
4	22627-001	LOCKNUT 1/2 NPT	1
5	352125-1	1/4-20 RIVET NUT 22 GA-10GA	4
6	65005-000	.25 WASHER SS	22
7	65003-000	SS LOCK WASHER ID.25 OD.475 TH.07	4
8	65000-001	.25-20X.75 SS HHCS	13
9	4158-000	TERMINAL RING 16-14 AWG #10	1
10	300539-7	SOLAR CHARGE CONTROLLER SS-10L-24V	1
11	22370-007	TERMINAL SPADE 16/14AWG #10STUD	7
12	2000-0507	55 WATT SOLAR PANEL BRACKET	1
13	300539-9	SOLAR PANEL 55W 24 V	1
14	47517-000	.25-20 NYLOCK	9

Battery Charger



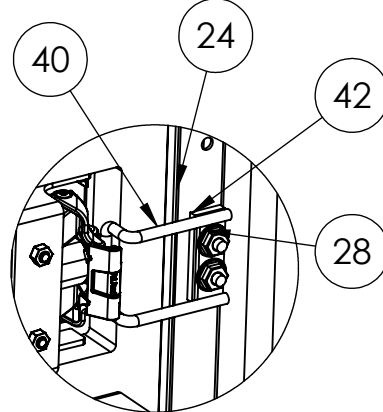
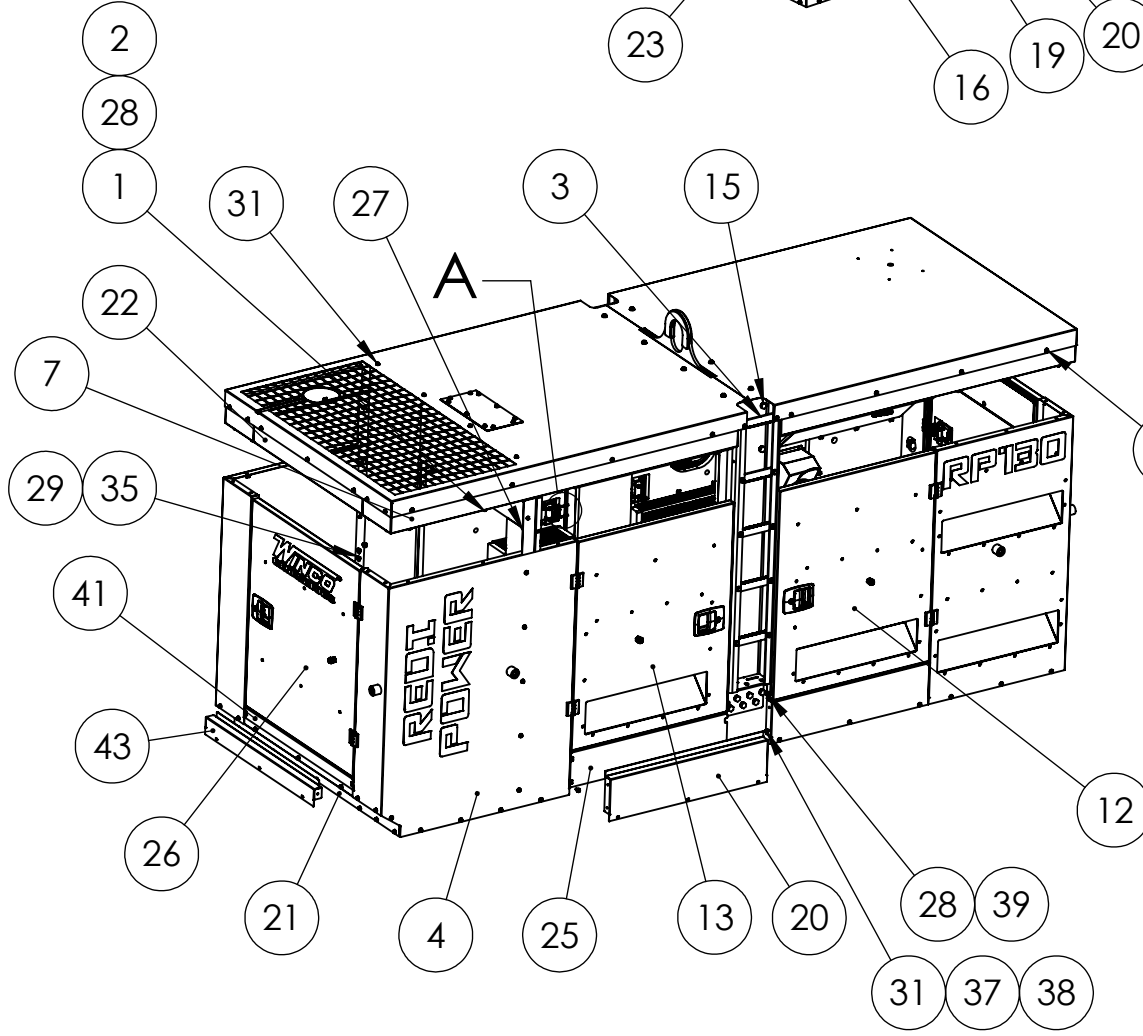
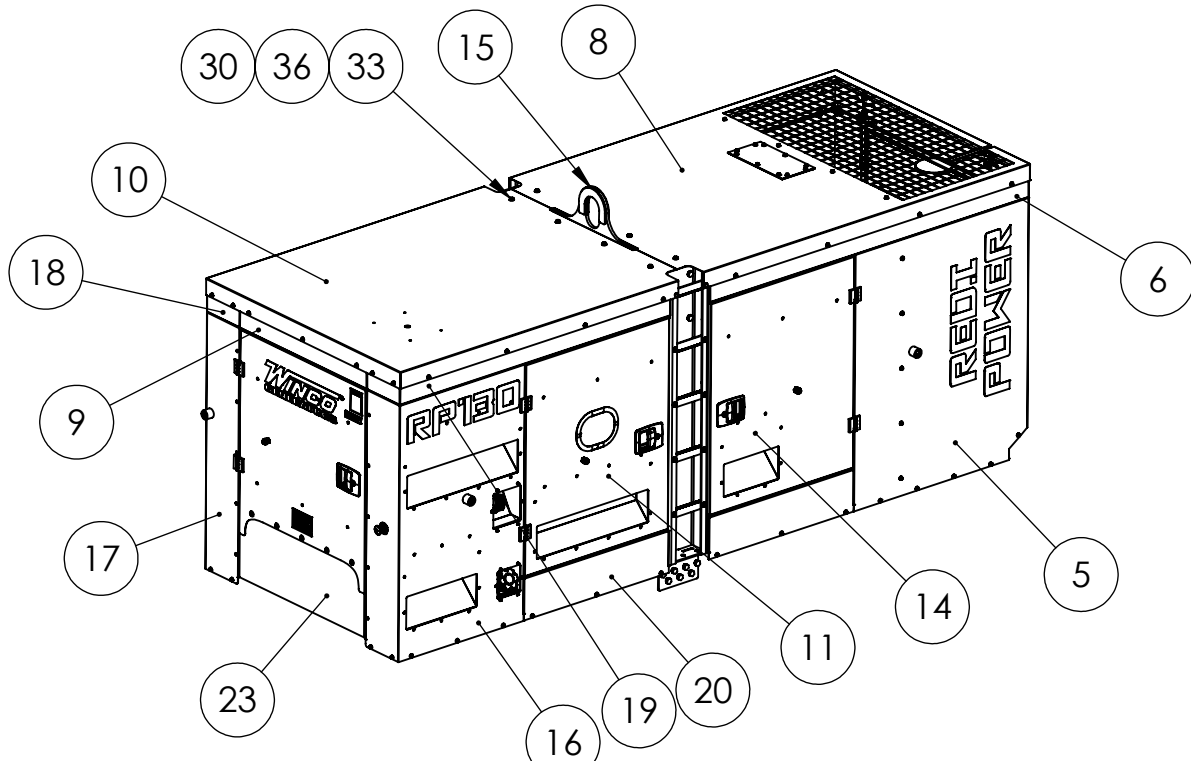
ITEM NO.	PART NUMBER	DESCRIPTION	QTY.
1	72036-024	BATTERY CHARGER, 120VAC/24VDC, 8.0 AMP, GUEST MODEL 2707A	1
2	64872-001	SOC.HCS 10-24 X 1 BLK	4
3	5315-000	NUT HEX 10-24 NYLON	4

Battery Tray



ITEM NO.	PART NUMBER	DESCRIPTION	QTY.
1	80765-010	BATTERY 12V 650CCA GROUP 24	2
2	1000-0815	RP130 BATTERY TRAY	1
3	405200-004	BATTERY HOLD DOWN BRACKET	1
4	479-000	LOCK WASHER, .25" SPLIT	2
5	512-000	.25 WASHER	2
6	638-000	HEX NUT, .25IN	2
7	96580-002	BATTERY CABLE 2/0 36"	1
8	96580-005	BATTERY CABLE 2/0 36"	1
9	75112-000	BATTERY HOLD DOWN ROD	2
10	16249-000	.3125-18 FLANGE	4
11	94304-001	THREAD STUD .3125-18X1	4
12	1000-0856	RP130 BATTERY SPACER BRACKET	2
13	96580-001	BAT.CABLE ASY 2/0GA 12	1
14	20039-000	LOCKWASHER 1/2 EXTERNAL TOOTH	1
15	21867-001	FLAT WASHER .51 X .88 X .05	1
16	94270-020	HHCS M12-175X 20MM	1
17	636-000	LOCKWASHER 1/2 SPLIT	1

Housing



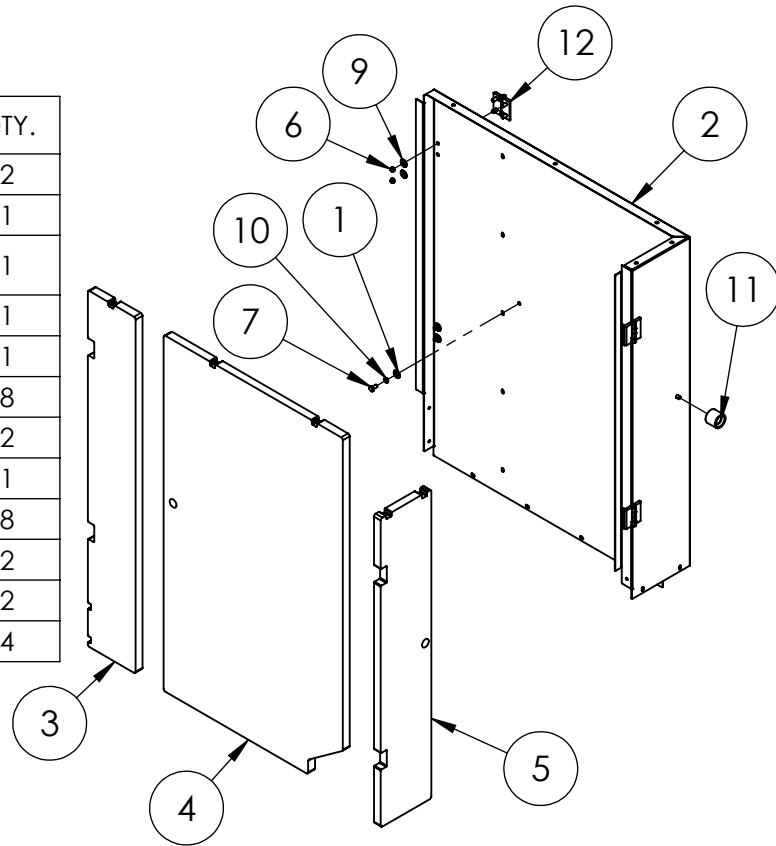
DETAIL A
SCALE 1 : 4

Housing Continued

ITEM NO.	PART NUMBER	DESCRIPTION	QTY.
1	476-000	.25-20X.625 HHB	38
2	512-000	.25 WASHER	38
3	1000-0420	ROOF GASKET	1
4	1000-0816	RP130 LEFT FRONT CORNER PANEL ASSEMBLY	1
5	1000-0817	RIGHT FRONT CORNER	1
6	1000-0819	RP130 RIGHT FRONT CORNER SILL ASSEMBLY	1
7	1000-0820	RP130 LEFT FRONT CORNER SILL ASSEMBLY	1
8	1000-0821	RP130 FRONT ROOF SECTION ASSEMBLY	1
9	1000-0822	RP130 REAR DOOR SILL ASSY W/ SWITCH	1
10	1000-0823	RP130 REAR ROOF SECTION ASSEMBLY	1
11	1000-0824	RP130 CONTROLLER DOOR ASSEMBLY	1
12	1000-0825	RP130 VOLTAGE SWITCH DOOR ASSEMBLY	1
13	1000-0826	RP130 LEFT HAND DOOR ASSEMBLY	1
14	1000-0827	RP130 RIGHT HAND DOOR ASSEMBLY	1
15	1000-0828	RP130 LIFTING ARCH ASSEMBLY	1
16	1000-0860	RP130 RIGHT REAR CORNER PANEL ASSEMBLY	1
17	1000-0861	RP130 LEFT REAR CORNER PANEL ASSEMBLY	1
18	1000-0867	RP130 LEFT REAR CORNER SILL ASSEMBLY	1
19	1000-0870	RP130 RIGHT REAR CORNER SILL ASSEMBLY	1
20	1000-0876	RP130 MAIN DOOR SILL	4
21	1000-0881	RP130 SNORKEL PLATE ASSEMBLY	1
22	1000-0980	RP130 REAR DOOR SILL ASSY	1
23	1000-1035	RECEPTACLE DOOR ASSEMBLY	1
24	1000-1037	DOOR STOP	4
25	1000-1081	FOAM, BOTTOM DOOR SILL	4
26	1000-1085	RADIATOR SERVICE DOOR ASSEMBLY	1
27	1000-1129	ASSY, RADIATOR PANEL	1
28	16248-000	.25-20 FLANGE NUT	63
29	16446-000	M8-1.25 NYLOCK	24
30	56864-000	NUT HEX 3/8-16 NYLOK	8
31	65000-001	.25-20X.75 SS HHCS	67
32	65000-000	.25-20X.625 SS HHCS	39
33	65002-001	.375-16X.75 HHB SS	8
34	65003-000	SS LOCK WASHER ID.25 OD.475 TH.07	90
35	65005-001	5/16 WASHER SS	24
36	65005-002	.375 FLATWASHER SS	8
37	65005-000	.25 WASHER SS	106
38	65006-000	.25-20 FLANGE NUT SS	16
39	94980-003	THREAD STUD .25-20 X .750	24
40	99269-003	STRIKER (FOR -002 LATCH)	4
41	492200-047	SNORKEL DOOR SILL FOAM	1
42	775060-012	STRIKER SPACER	4
43	775200-015	RADIATOR DOOR BOTTOM SILL	1

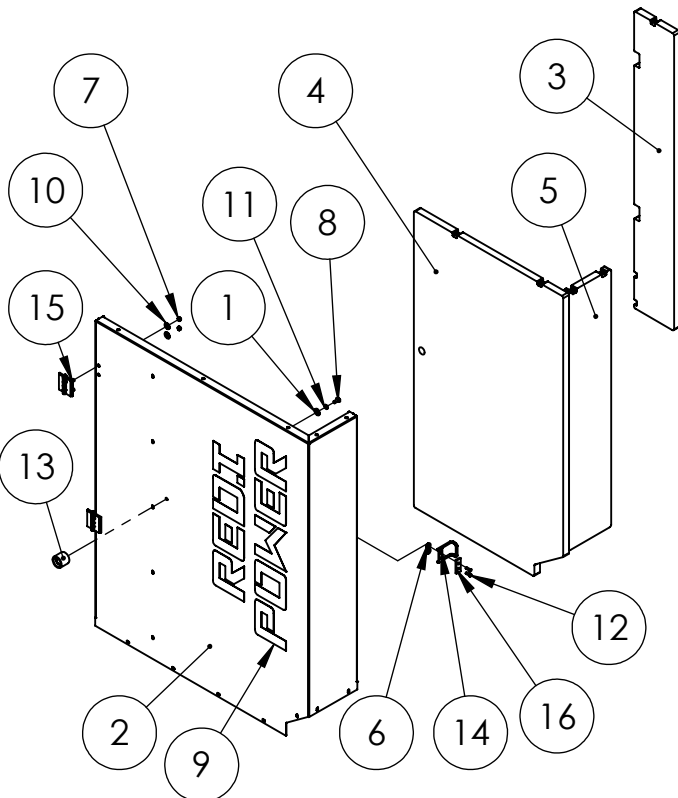
Left Front Corner Panel Assembly

ITEM NO.	PART NUMBER	DESCRIPTION	QTY.
1	526-000	WASHER ID .375 OD .890	2
2	1000-0878	RP130 LEFT FRONT CORNER PANEL	1
3	1000-1021	FOAM, RADIATOR PANEL LEFT CORNER, ENGINE SIDE	1
4	1000-1022	FOAM, SNORKEL BOTTOM LEFT	1
5	1000-1024	FOAM, FRONT LEFT SNORKEL CORNER	1
6	16446-000	M8-1.25 NYLOCK	8
7	57493-016	M8-1.25X16MM ZINC	2
8	64214-050	REDI POWER DECAL	1
9	65005-001	5/16 WASHER SS	8
10	93341-008	LOCKWASHER M8	2
11	95232-000	DOOR HOLDER FEMALE	2
12	350054-5	HINGE BLACK	4

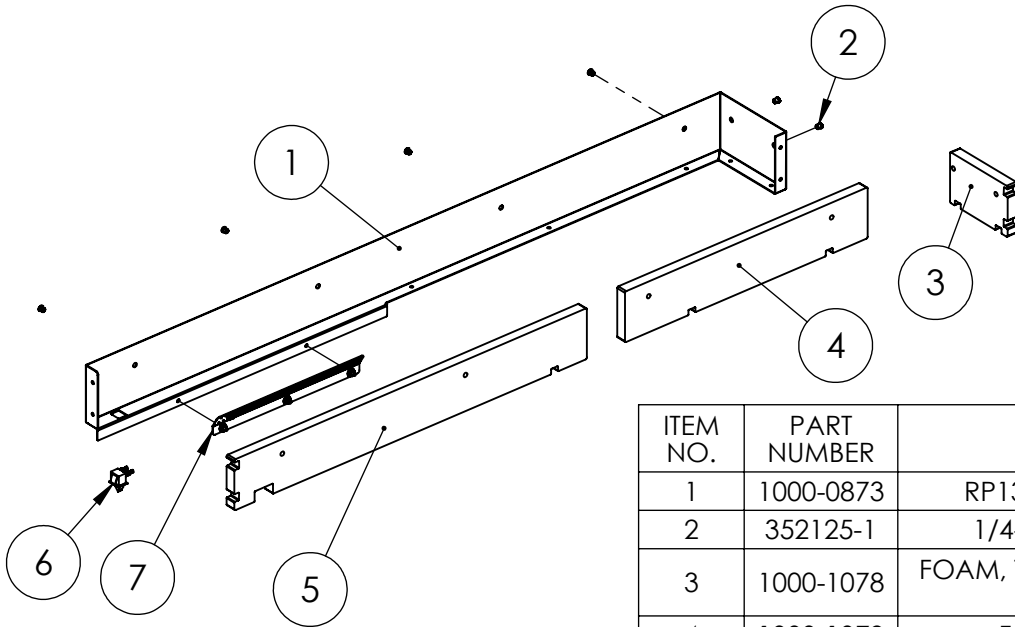


Right Front Corner Panel Assembly

ITEM NO.	PART NUMBER	DESCRIPTION	QTY.
1	526-000	WASHER ID .375 OD .890	1
2	1000-0879	RP130 RIGHT FRONT CORNER PANEL	1
3	1000-1025	FOAM, RADIATOR PANEL RIGHT CORNER, ENGINE SIDE	1
4	1000-1118	FOAM, SNORKEL BOTTOM RIGHT	1
5	1000-1119	FOAM, FRONT RIGHT SNORKEL CORNER	1
6	16248-000	.25-20 FLANGE NUT	2
7	16446-000	M8-1.25 NYLOCK	4
8	57493-016	M8-1.25X16MM ZINC	1
9	64214-050	REDI POWER DECAL	1
10	65005-001	5/16 WASHER SS	4
11	93341-008	LOCKWASHER M8	1
12	94980-003	THREAD STUD .25-20 X .750	2
13	95232-000	DOOR HOLDER FEMALE	1
14	99269-003	STRIKER (FOR -002 LATCH)	1
15	350054-5	HINGE BLACK	2
16	775060-012	STRIKER SPACER	1

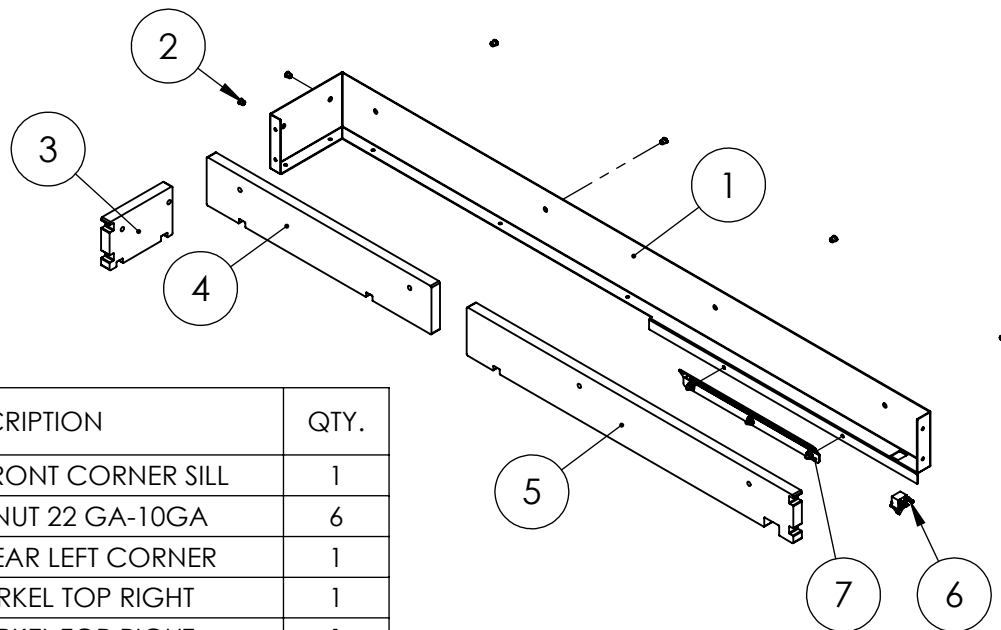


Left Front Corner Sill Assembly



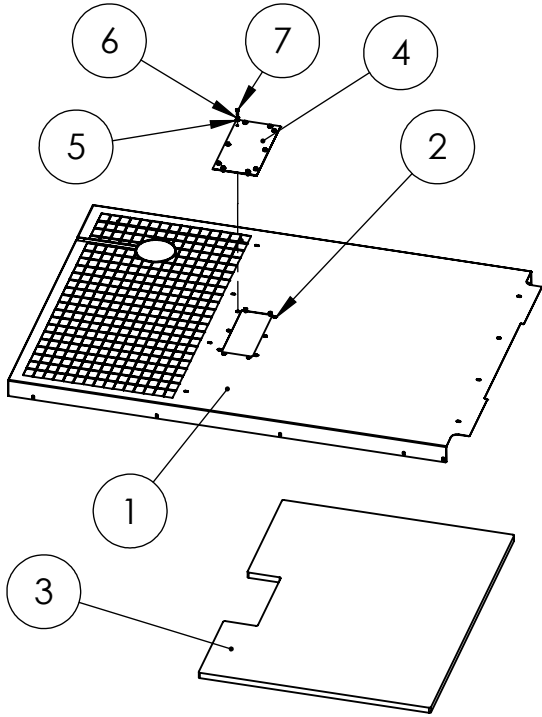
ITEM NO.	PART NUMBER	DESCRIPTION	QTY.
1	1000-0873	RP130 LEFT FRONT CORNER SILL	1
2	352125-1	1/4-20 RIVET NUT 22 GA-10GA	6
3	1000-1078	FOAM, TOP REAR RIGHT CORNER, TOP FRONT LEFT CORNER	1
4	1000-1079	FOAM, SNORKEL TOP LEFT	1
5	1000-1090	FOAM, SNORKEL TOP LEFT	1
6	1000-1403	DOOR SWITCH ASSEMBLY	1
7	1000-1402	DOOR LIGHT ASSEMBLY	1

Right Front Corner Sill Assembly



ITEM NO.	PART NUMBER	DESCRIPTION	QTY.
1	1000-0874	RP130 RIGHT FRONT CORNER SILL	1
2	352125-1	1/4-20 RIVET NUT 22 GA-10GA	6
3	1000-1076	FOAM, TOP REAR LEFT CORNER	1
4	1000-1077	FOAM, SNORKEL TOP RIGHT	1
5	1000-1089	FOAM, SNORKEL TOP RIGHT	1
6	1000-1403	DOOR SWITCH ASSEMBLY	1
7	1000-1402	DOOR LIGHT ASSEMBLY	1

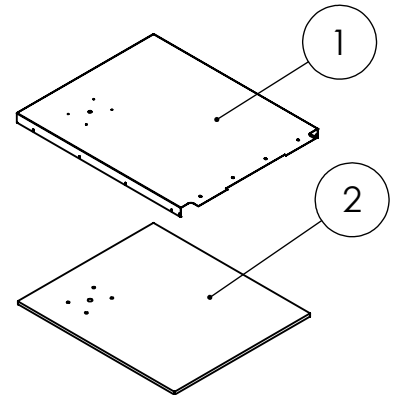
Front Roof Section Assembly



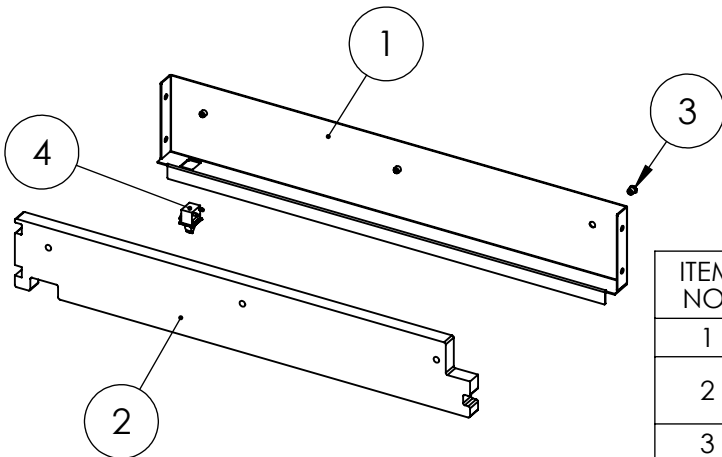
ITEM NO.	PART NUMBER	DESCRIPTION	QTY.
1	1000-0880	RP130 FRONT ROOF SECTION	1
2	352125-2	RIVET NUT 1/4-20 .165-.260	10
3	1000-1083	FOAM, LEFT FRONT ROOF	1
4	1000-0418	RADIATOR FILL ACCESS PANEL	1
5	65005-000	.25 WASHER SS	10
6	65003-000	SS LOCK WASHER ID.25 OD.475 TH.07	10
7	65000-001	.25-20X.75 SS HHCS	10

Rear Roof Section Assembly

ITEM NO.	PART NUMBER	DESCRIPTION	QTY.
1	1000-0872	RP130 REAR ROOF SECTION	1
2	1000-1082	FOAM, RIGHT REAR ROOF	1

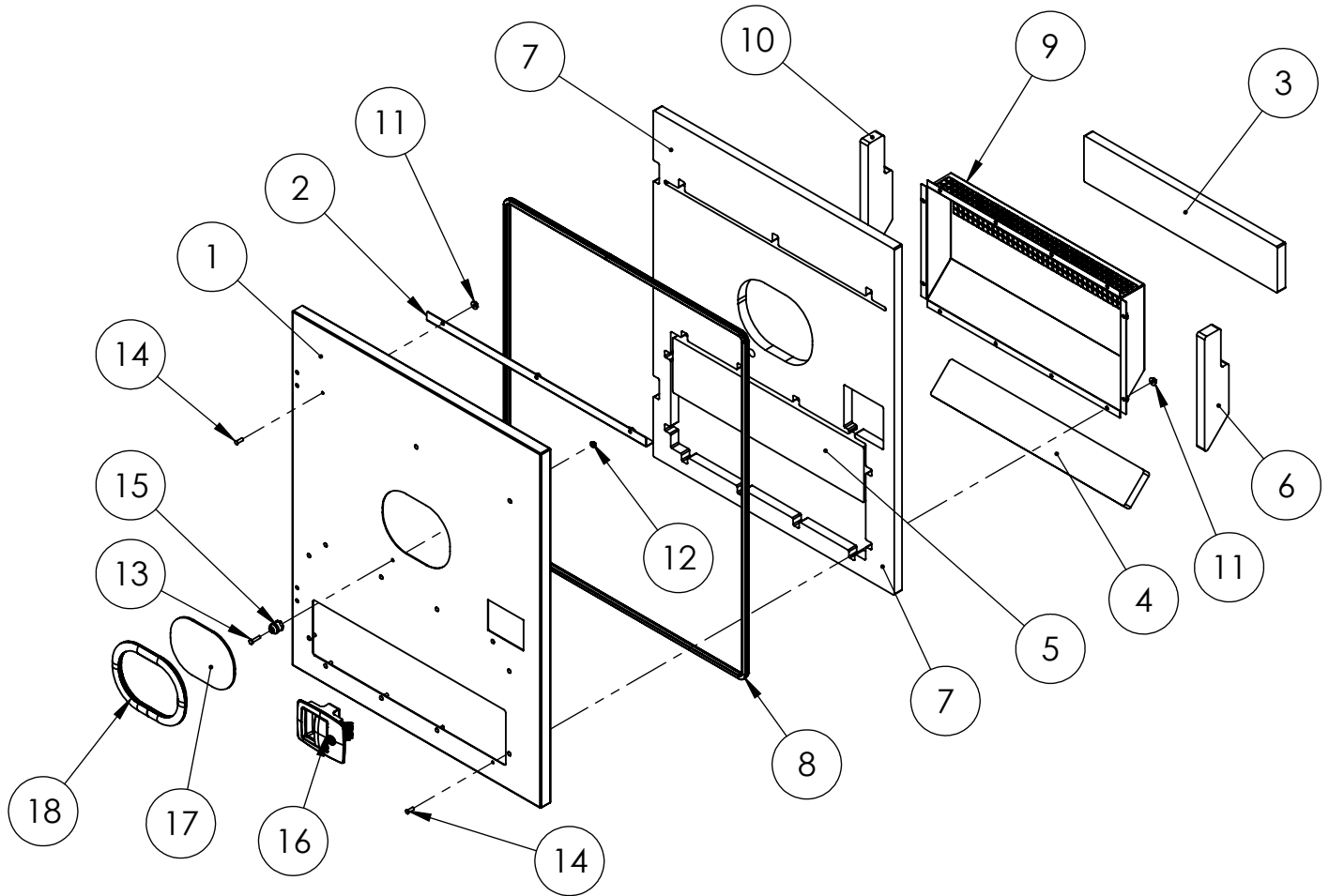


Rear Door Sill Assembly



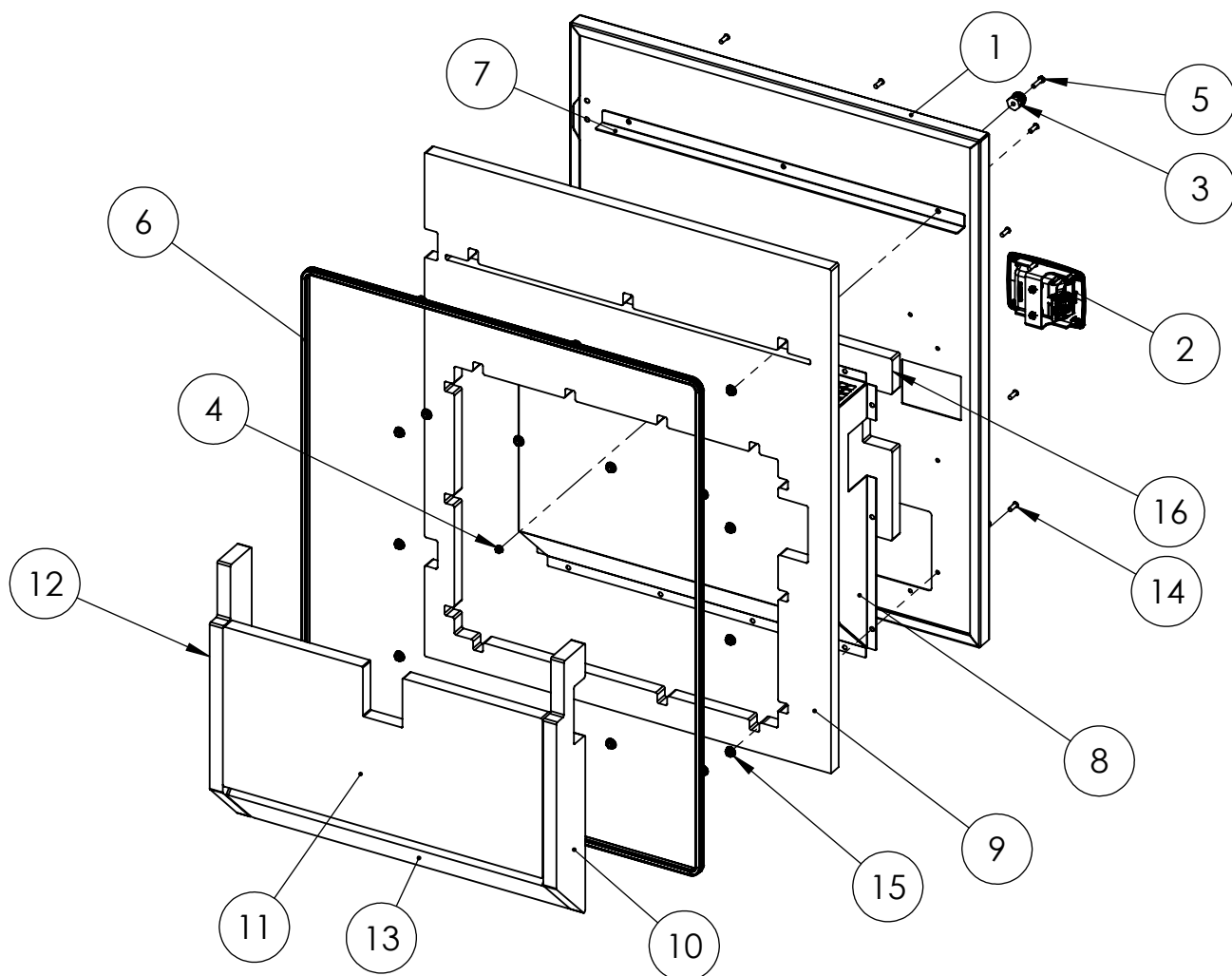
ITEM NO.	PART NUMBER	DESCRIPTION	QTY.
1	1000-0869	RP130 REAR DOOR SILL	1
2	1000-1070	FOAM, FRONT AND REAR UPPER DOOR SILL	1
3	352125-1	1/4-20 RIVET NUT 22 GA-10GA	3
4	71444-004	SWITCH N.C.	1

Controller Door Assembly



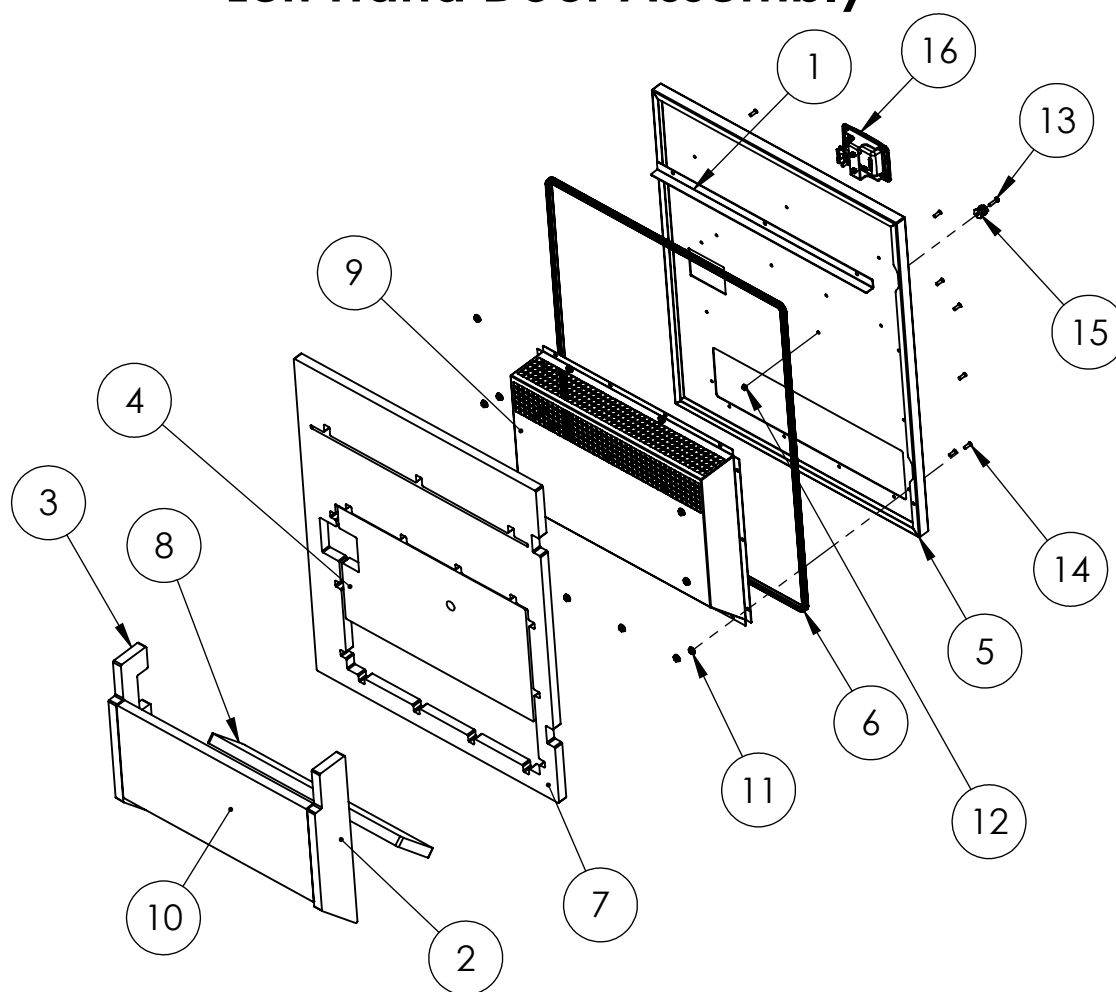
ITEM NO.	PART NUMBER	DESCRIPTION	QTY.
1	1000-0875	RP130 CONTROLLER DOOR	1
2	1000-0962	DOOR BRACE	1
3	1000-0974	FOAM, BACK SERVICE DOOR	1
4	1000-0976	FOAM, BOTTOM SERVICE DOOR	1
5	1000-0982	FOAM, INNER SERVICE DOOR	1
6	1000-1029	FOAM, RIGHT SIDE, SERVICE DOOR	1
7	1000-1033	FOAM, CONTROLLER DOOR	1
8	1000-1034	AIR SEAL	1
9	1000-1283	SERVICE DOOR BAFFLE	1
10	1000-1285	FOAM, LEFT SIDE, SERVICE DOOR	1
11	16248-000	.25-20 FLANGE NUT	15
12	64841-001	M6-1.0 FLANGE NUT ZINC	1
13	75139-025	HHCS M6-1X25MM STAINLESS STEEL	1
14	94980-003	THREAD STUD .25-20 X .750	15
15	95232-001	DOOR HOLDER MALE	1
16	99269-002	DOOR LATCH LOCKABLE	1
17	351556-20	WINDOW PANEL	1
18	351597	WEATHER STRIP WINDOW SEAL CUT TO	24.8183

Voltage Switch Door Assembly



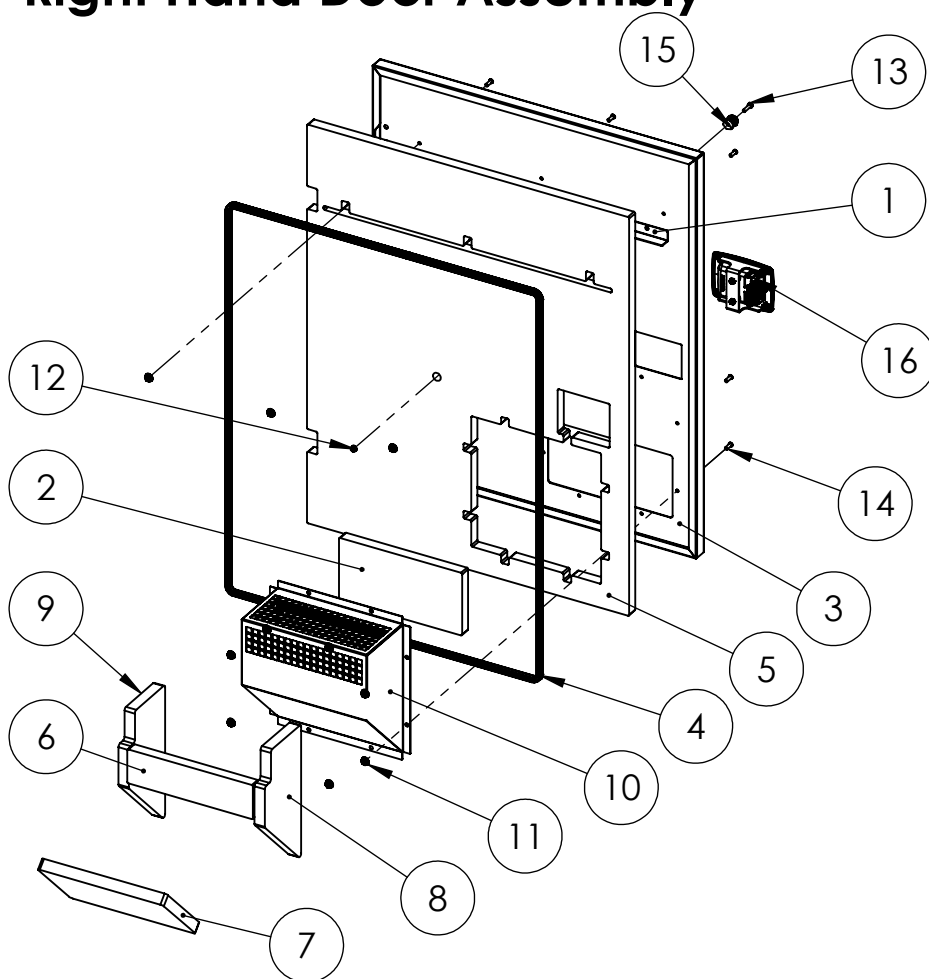
ITEM NO.	PART NUMBER	DESCRIPTION	QTY.
1	1000-0877	RP130 VOLTAGE SWITCH DOOR	1
2	99269-002	DOOR LATCH LOCKABLE	1
3	95232-001	DOOR HOLDER MALE	1
4	64841-001	M6-1.0 FLANGE NUT ZINC	1
5	75139-025	HHCS M6-1X25MM STAINLESS STEEL	1
6	1000-1034	AIR SEAL	1
7	1000-0962	DOOR BRACE	1
8	1000-1091	SERVICE DOOR BAFFLE	1
9	1000-1051	FOAM, VOLTAGE SWITCH DOOR, INSIDE TOP	1
10	1000-1273	FOAM, LEFT SIDE, SERVICE DOOR	1
11	1000-1028	FOAM, BACK SERVICE DOOR	1
12	1000-1092	FOAM, RIGHT SIDE, SERVICE DOOR	1
13	1000-2458	FOAM, BOTTOM SERVICE DOOR	1
14	94980-003	THREAD STUD .25-20 X .750	17
15	16248-000	.25-20 FLANGE NUT	17
16	1000-0983	FOAM, BACK INNER SERVICE DOOR	1

Left Hand Door Assembly



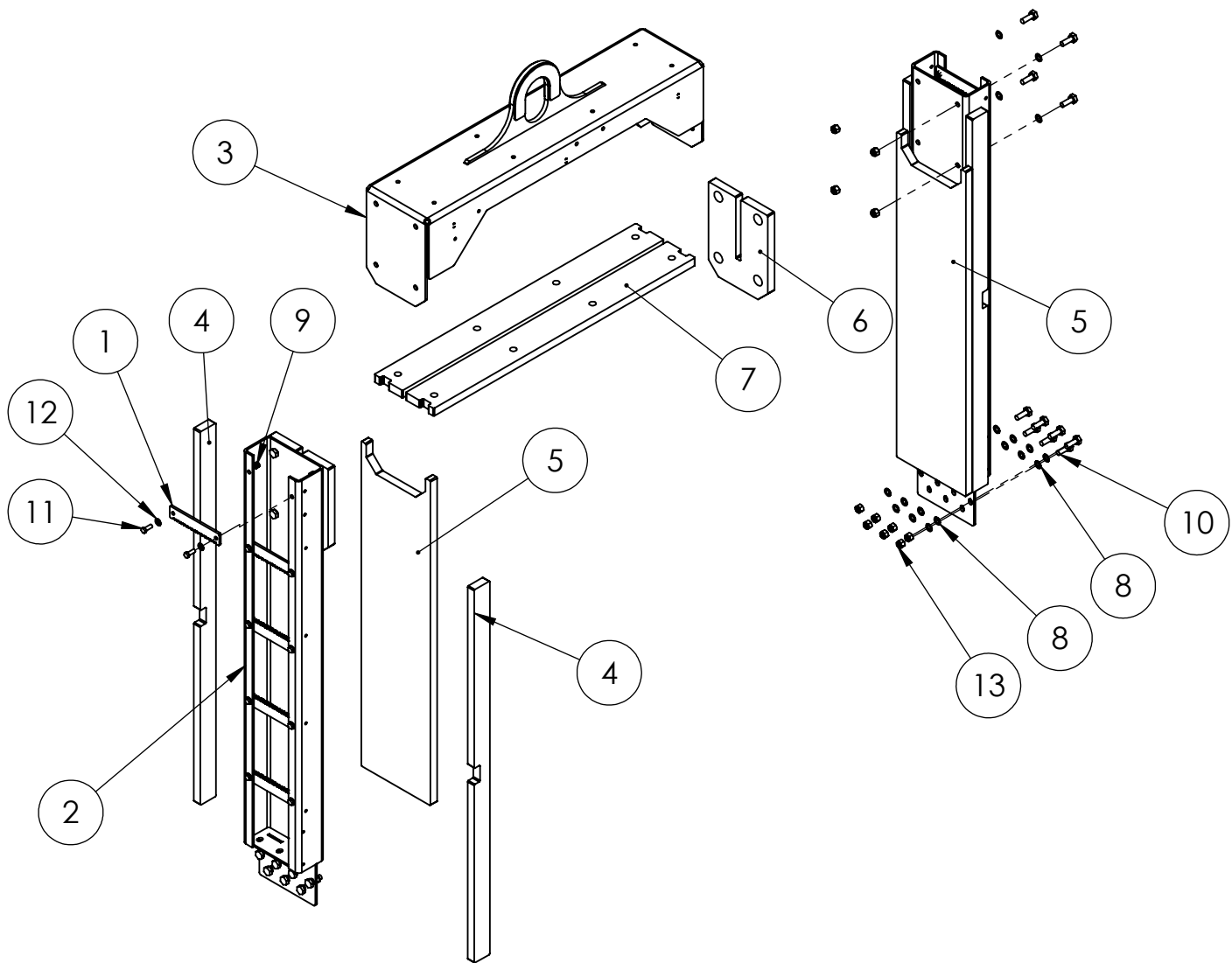
ITEM NO.	PART NUMBER	DESCRIPTION	QTY.
1	1000-0962	DOOR BRACE	1
2	1000-0972	FOAM, LEFT SIDE, SERVICE DOOR	1
3	1000-0973	FOAM, RIGHT SIDE, SERVICE DOOR	1
4	1000-0975	FOAM, BACK INNER SERVICE DOOR	1
5	1000-1018	LEFT HAND SIDE DOOR	1
6	1000-1034	AIR SEAL	1
7	1000-1039	FOAM, LEFT HAND DOOR	1
8	1000-1093	FOAM, BOTTOM SERVICE DOOR	1
9	1000-1274	SERVICE DOOR BAFFLE	1
10	1000-2460	FOAM, BACK SERVICE DOOR	1
11	16248-000	.25-20 FLANGE NUT	17
12	64841-001	M6-1.0 FLANGE NUT ZINC	1
13	75139-025	HHCS M6-1X25MM STAINLESS STEEL	1
14	94980-003	THREAD STUD .25-20 X .750	17
15	95232-001	DOOR HOLDER MALE	1
16	99269-002	DOOR LATCH LOCKABLE	1

Right Hand Door Assembly



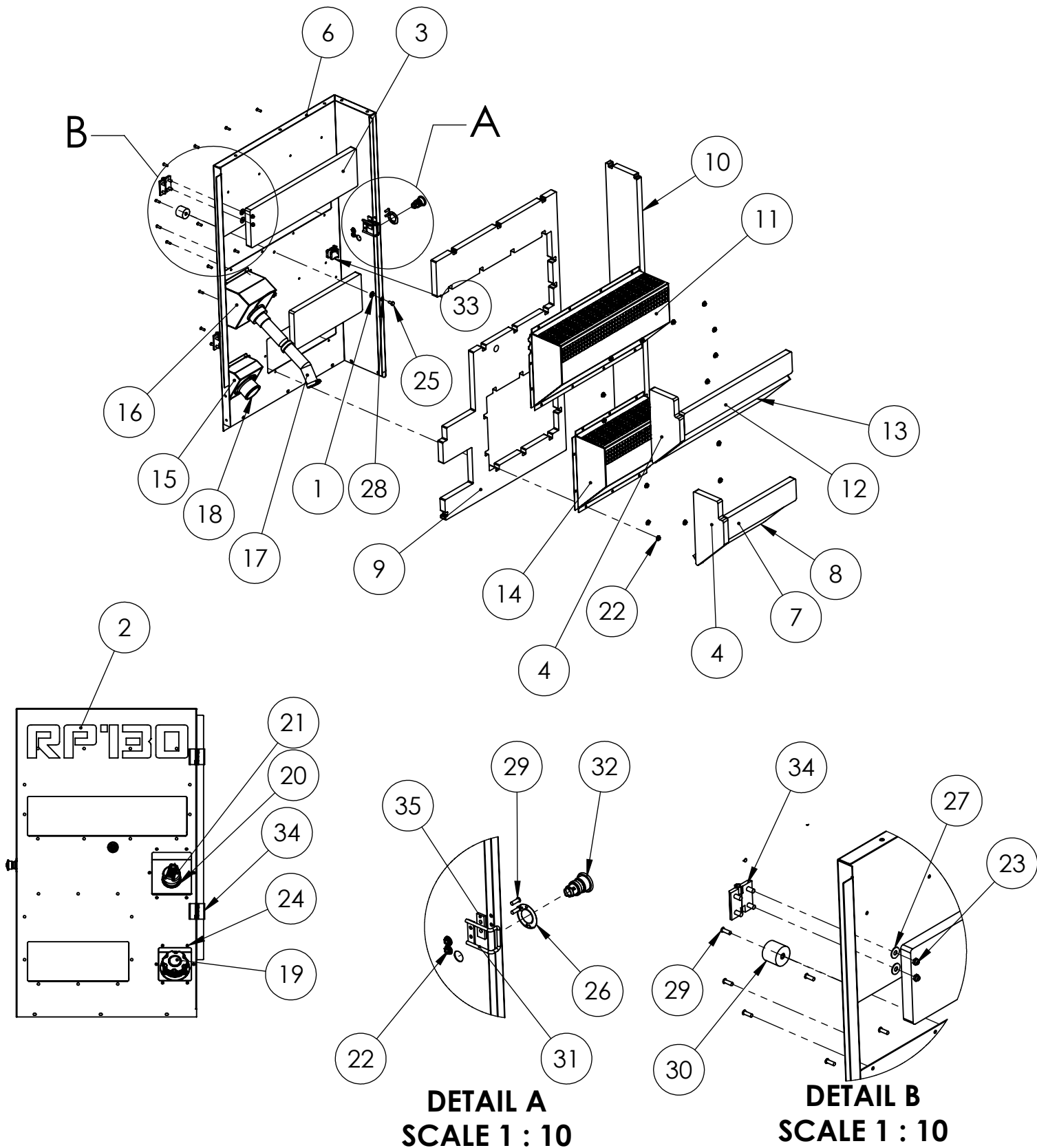
ITEM NO.	PART NUMBER	DESCRIPTION	QTY.
1	1000-0962	DOOR BRACE	1
2	1000-0977	FOAM, BACK INNER SERVICE DOOR	1
3	1000-1019	RIGHT HAND SIDE DOOR	1
4	1000-1034	AIR SEAL	1
5	1000-1038	FOAM, RIGHT HAND DOOR, INSIDE TOP	1
6	1000-1095	FOAM, BACK SERVICE DOOR	1
7	1000-1031	FOAM, BOTTOM SERVICE DOOR	1
8	1000-1279	FOAM, LEFT SIDE, SERVICE DOOR	1
9	1000-1280	FOAM, RIGHT SIDE, SERVICE DOOR	1
10	1000-1281	REAR CORNER BAFFLE	1
11	16248-000	.25-20 FLANGE NUT	11
12	64841-001	M6-1.0 FLANGE NUT ZINC	1
13	75139-025	HHCS M6-1X25MM STAINLESS STEEL	1
14	94980-003	THREAD STUD .25-20 X .750	11
15	95232-001	DOOR HOLDER MALE	1
16	99269-002	DOOR LATCH LOCKABLE	1

Lifting Arch Assembly



ITEM NO.	PART NUMBER	DESCRIPTION	QTY.
1	1000-0862	RP130 LADDER RUNG	10
2	1000-0865	RP130 MULLION WELDMENT	2
3	1000-1015	WELDED LIFTING EYE BRACE ASSEMBLY	1
4	1000-1099	FOAM, MULLION	4
5	1000-1100	FOAM, INSIDE MULLION	2
6	1000-1101	FOAM, TOP LIFT BRACE	2
7	1000-1102	FOAM, TOP LIFT ARCH	2
8	21867-001	FLAT WASHER .51 X .88 X .05	36
9	56864-000	NUT HEX 3/8-16 NYLOK	20
10	57580-000	HHCS 1/2-13 X 1.5 GR5	22
11	65002-001	.375-16X.75 HHB SS	20
12	65005-002	.375 FLATWASHER SS	20
13	92242-000	NUT HEX .500-13 NYLOCK	22

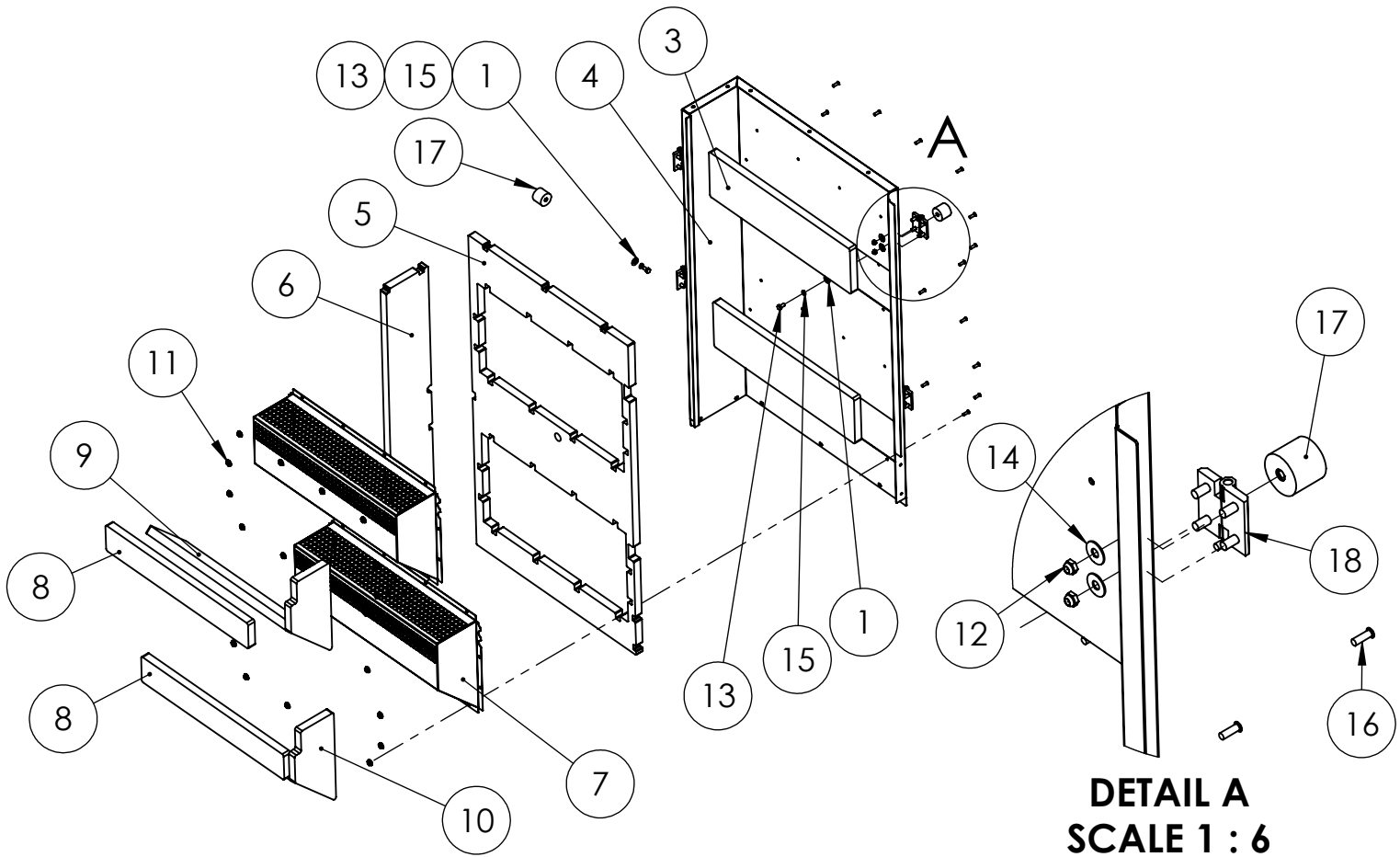
Right Rear Corner Panel Assembly



Right Rear Corner Panel Assembly

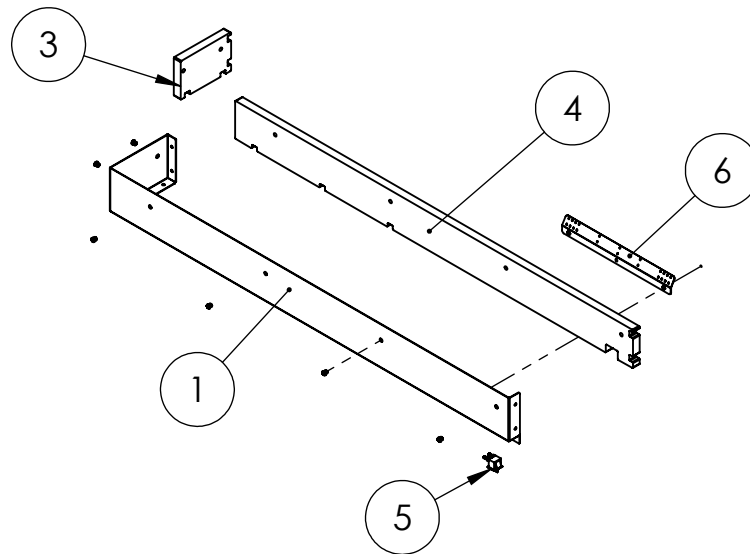
ITEM NO.	PART NUMBER	DESCRIPTION	QTY.
1	526-000	WASHER ID .375 OD .890	1
2	1000-0858	RP130 DECAL	1
3	1000-0978	FOAM, FRONT OF BAFFLE	1
4	1000-0979	FOAM, RIGHT SIDE, SERVICE DOOR	2
5	1000-0984	FOAM, FRONT OF BAFFLE	1
6	1000-1001	RIGHT REAR CORNER PANEL	1
7	1000-1065	FOAM, FRONT OF BAFFLE	1
8	1000-1066	FOAM, BAFFLE BOTTOM	1
9	1000-1068	FOAM, REAR RIGHT CORNER PANEL	1
10	1000-1069	FOAM, REAR RIGHT CORNER	1
11	1000-1121	REAR CORNER BAFFLE	1
12	1000-1128	FOAM, FRONT OF BAFFLE	1
13	1000-1276	FOAM, BOTTOM SERVICE DOOR	1
14	1000-1277	REAR CORNER BAFFLE	1
15	1000-2459	FUEL NECK BEZZEL	1
16	1000-3014	DEF NECK BEZEL	1
17	15482-012	REMOTE FILLING FOR UREA TANK	1
18	15482-013	REMOTE FILLING FOR FUEL	1
19	15482-015	NO LOCKING CAP	1
20	15482-016	PVC RUBBER LATCH FOR CAPS	1
21	15842-014	UREA LOCKING CAP	1
22	16248-000	.25-20 FLANGE NUT	24
23	16446-000	M8-1.25 NYLOCK	4
24	21698-001	TORX PAN HEAD SCREW #10	12
25	57493-016	M8-1.25X16MM ZINC	1
26	63941-020	E-STOP DECAL	1
27	65005-001	5/16 WASHER SS	4
28	93341-008	LOCKWASHER M8	1
29	94980-003	THREAD STUD .25-20 X .750	24
30	95232-000	DOOR HOLDER FEMALE	1
31	99269-003	STRIKER (FOR -002 LATCH)	1
32	99783-001	SWITCH PUSH PULL	1
33	99783-002	SWITCH CONTACT	1
34	350054-5	HINGE BLACK	2
35	775060-012	STRIKER SPACER	1

Left Rear Corner Panel Assembly



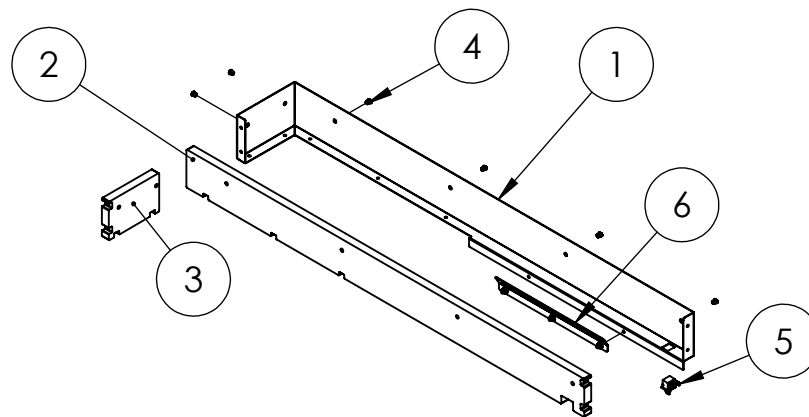
ITEM NO.	PART NUMBER	DESCRIPTION	QTY.
1	526-000	WASHER ID .375 OD .890	2
2	1000-0858	RP130 DECAL	1
3	1000-0978	FOAM, FRONT OF BAFFLE	2
4	1000-1002	LEFT REAR CORNER PANEL	1
5	1000-1030	FOAM, REAR LEFT CORNER PANEL	1
6	1000-1071	FOAM, REAR LEFT CORNER	1
7	1000-1121	REAR CORNER BAFFLE	2
8	1000-1128	FOAM, FRONT OF BAFFLE	2
9	1000-1276	FOAM, BOTTOM SERVICE DOOR	2
10	1000-1279	FOAM, LEFT SIDE, SERVICE DOOR	2
11	16248-000	.25-20 FLANGE NUT	24
12	16446-000	M8-1.25 NYLOCK	8
13	57493-016	M8-1.25X16MM ZINC	2
14	65005-001	5/16 WASHER SS	8
15	93341-008	LOCKWASHER M8	2
16	94980-003	THREAD STUD .25-20 X .750	24
17	95232-000	DOOR HOLDER FEMALE	2
18	350054-5	HINGE BLACK	4

Right Rear Corner Sill Assembly



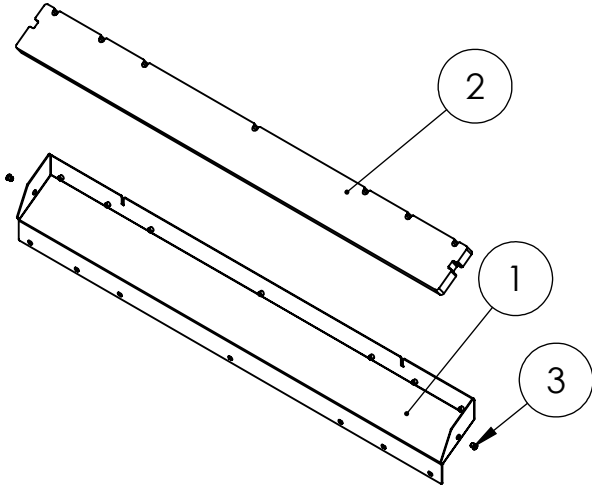
ITEM NO.	PART NUMBER	DESCRIPTION	QTY.
1	1000-0871	RP130 RIGHT REAR CORNER SILL	1
2	352125-1	1/4-20 RIVET NUT 22 GA-10GA	6
3	1000-1072	FOAM, TOP REAR RIGHT CORNER, TOP FRONT LEFT CORNER	1
4	1000-1073	FOAM, REAR TOP RIGHT SILL	1
5	1000-1403	DOOR SWITCH ASSEMBLY	1
6	1000-1402	DOOR LIGHT ASSEMBLY	1

Left Rear Corner Sill Assembly



ITEM NO.	PART NUMBER	DESCRIPTION	QTY.
1	1000-0868	RP130 LEFT REAR CORNER SILL	1
2	1000-1075	FOAM, REAR TOP LEFT SILL	1
3	1000-1074	FOAM, TOP REAR LEFT CORNER	1
4	352125-1	1/4-20 RIVET NUT 22 GA-10GA	6
5	1000-1403	DOOR SWITCH ASSEMBLY	1
6	1000-1402	DOOR LIGHT ASSEMBLY	1

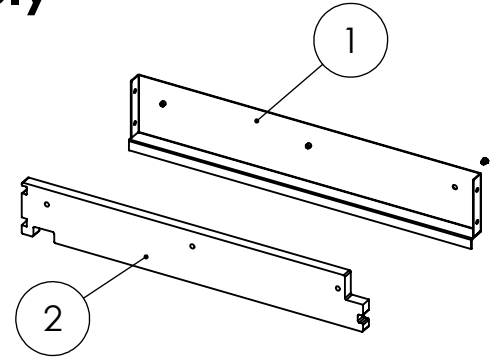
Snorkel Plate Assembly



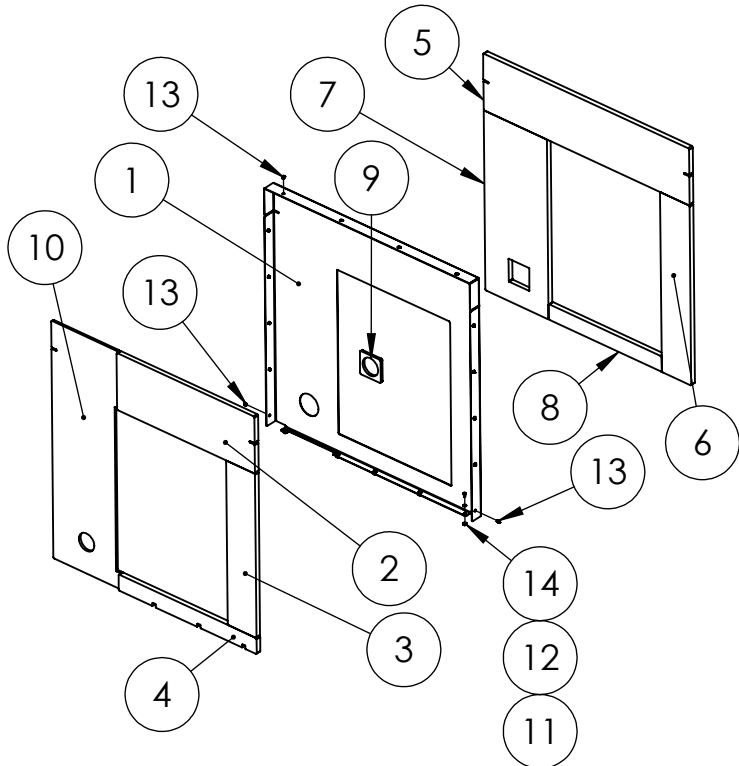
ITEM NO.	PART NUMBER	DESCRIPTION	QTY.
1	1000-0882	RP130 SNORKEL PLATE	1
2	1000-1080	FOAM, SNORKEL BOTTOM	1
3	352125-1	1/4-20 RIVET NUT 22 GA-10GA	9

Rear Door Sill Assembly

ITEM NO.	PART NUMBER	DESCRIPTION	QTY.
1	1000-0981	RP130 FRONT DOOR SILL	1
2	1000-1070	FOAM, FRONT AND REAR UPPER DOOR SILL	1
3	352125-1	1/4-20 RIVET NUT 22 GA-10GA	3

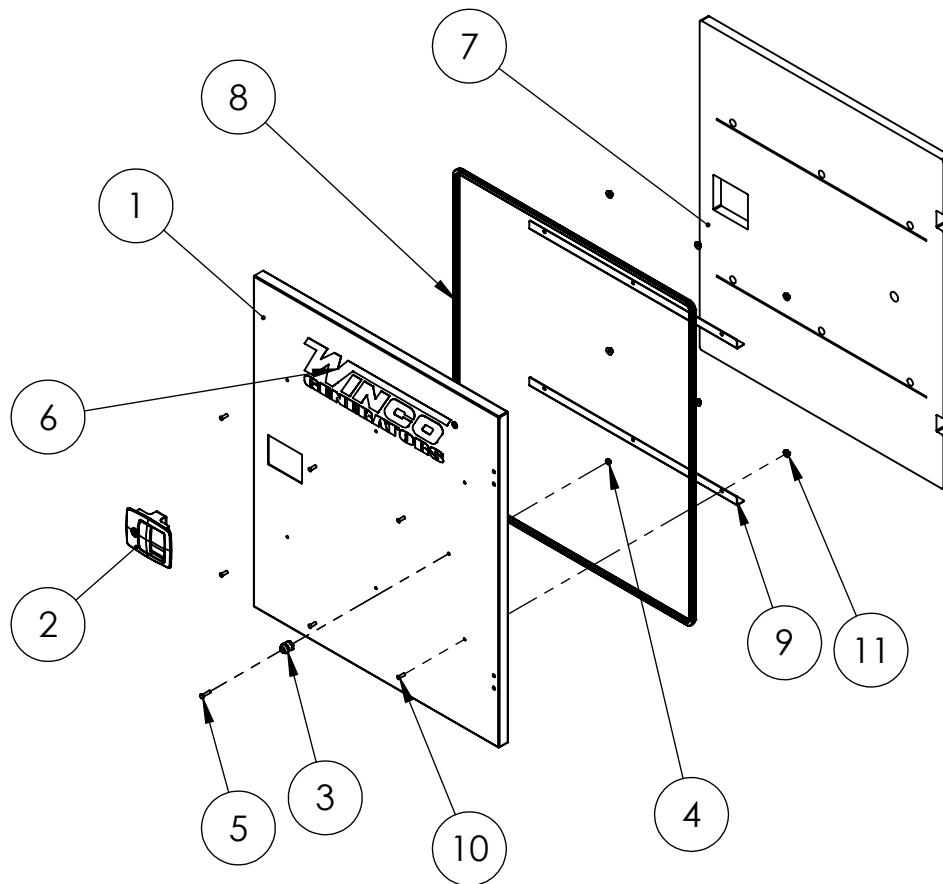


Radiator Panel Assembly



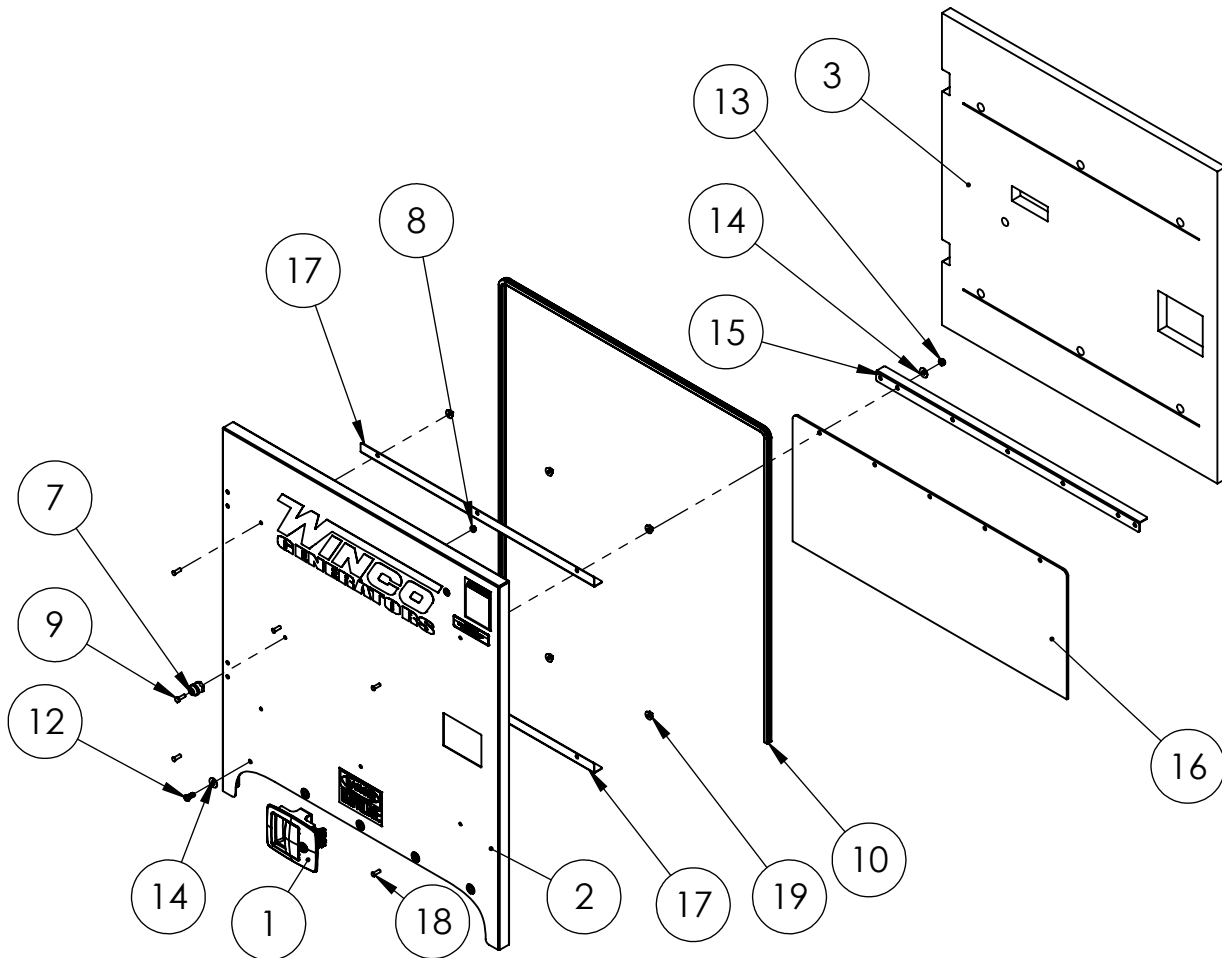
ITEM NO.	PART NUMBER	DESCRIPTION	QTY.
1	1000-1006	RADIATOR PANEL	1
2	1000-1106	FOAM, TOP RADIATOR PANEL	1
3	1000-1108	FOAM, LEFT SIDE RADIATOR PANEL	1
4	1000-1107	FOAM, BOTTOM RADIATOR PANEL	1
5	1000-1111	FOAM, TOP INSIDE RADIATOR PANEL	1
6	1000-1113	FOAM, LH INSIDE RADIATOR PANEL	1
7	1000-1112	FOAM, RH INSIDE RADIATOR PANEL	1
8	1000-1114	FOAM, BOTTOM INSIDE RADIATOR PANEL	1
9	1000-1104	MELAMINE FOAM, EXHAUST PIPE	1
10	1000-1105	MELAMINE FOAM, RADIATOR PANEL EXHAUST SIDE	1
11	65000-000	.25-20X.625 SS HHCS	5
12	65005-000	.25 WASHER SS	5
13	352125-1	1/4-20 RIVET NUT 22 GA-10GA	14
14	65006-000	.25-20 FLANGE NUT SS	5

Radiator Service Door Assembly



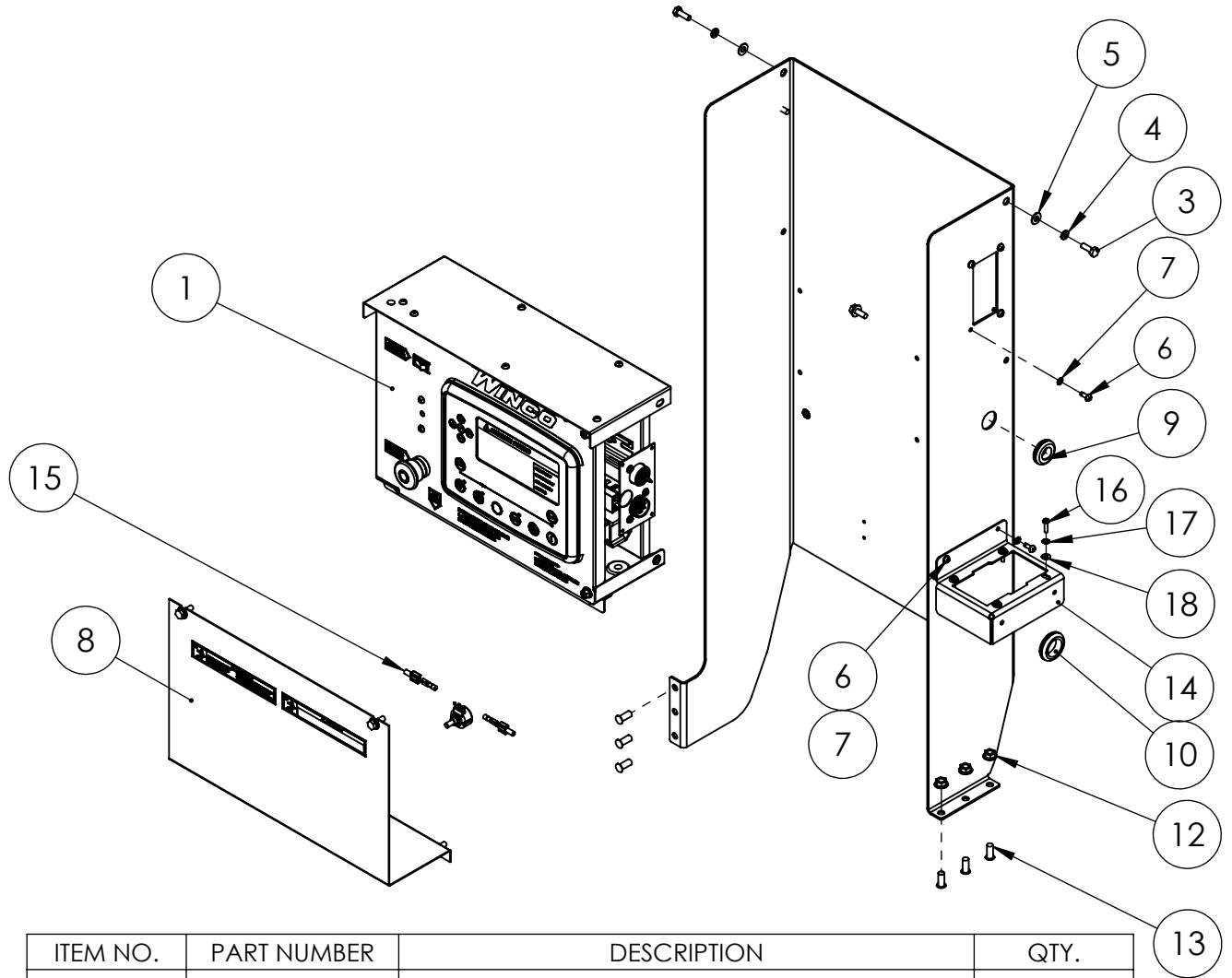
ITEM NO.	PART NUMBER	DESCRIPTION	QTY.
1	1000-1087	RADIATOR SERVICE DOOR	1
2	99269-002	DOOR LATCH LOCKABLE	1
3	95232-001	DOOR HOLDER MALE	1
4	64841-001	M6-1.0 FLANGE NUT ZINC	1
5	75139-025	HHCS M6-1X25MM STAINLESS STEEL	1
6	98313-001	WINCO LOGO	1
7	1000-1086	FOAM, SNORKEL SERVICE DOOR	1
8	16348-000	RAD SERVICE DOOR BULB AIR SEAL	1
9	1000-0962	DOOR BRACE	2
10	94980-003	THREAD STUD .25-20 X .750	6
11	16248-000	.25-20 FLANGE NUT	6

Receptacle Door Assembly



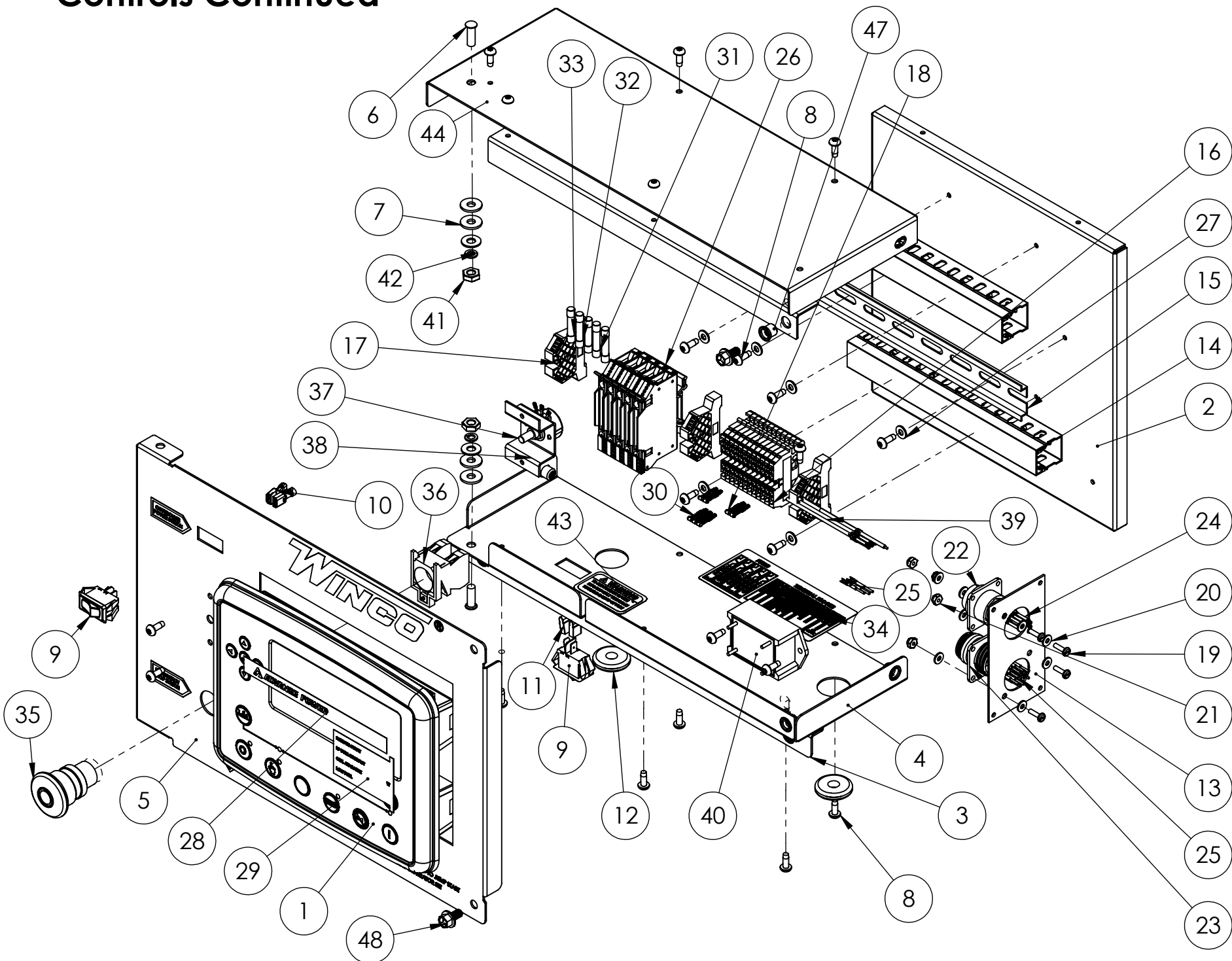
ITEM NO.	PART NUMBER	DESCRIPTION	QTY.
1	99269-002	DOOR LATCH LOCKABLE	1
2	1000-0985	REAR RECEPTACLE DOOR	1
3	1000-0986	FOAM, RECEPTACLE DOOR	1
4	91498-000	DECAL-DANGER HIGH VOLTAGE 3.5x5	1
5	99951-000	DECAL KEEP DOORS LOCKED	1
6	97813-000	DECAL-WARNING CYCLE CRANK	1
7	95232-001	DOOR HOLDER MALE	1
8	64841-001	M6-1.0 FLANGE NUT ZINC	1
9	75139-020	HHCS M6-1X20MM ZINC	1
10	16348-000	AIR SEAL 95 INCH	1
11	98313-001	WINCO LOGO	1
12	64858-102	BHSCS .3125-18 X 0.75 BUTTON HEAD SOCKET CAP SCREW SS	5
13	47136-000	HEX NUT .3125-18 NYLOK	5
14	65005-001	5/16 WASHER SS	10
15	775200-038	RECEPTACLE DOOR ANGLE BRACKET	1
16	1000-1036	RECEPTACLE DOOR FLAP	1
17	1000-0962	DOOR BRACE	2
18	94980-003	THREAD STUD .25-20 X .750	6
19	16248-000	.25-20 FLANGE NUT	6

Controls



ITEM NO.	PART NUMBER	DESCRIPTION	QTY.
1	351891-51	ECU ENGINE CONTROLLER	1
2	1000-0842	CONTROL TOWER	1
3	466-000	.25-20X.75 HHB	4
4	479-000	LOCK WASHER .25IN ID.	4
5	512-000	.25 WASHER	4
6	21698-001	TORX PAN HEAD SCREW #10	6
7	96286-002	FLAT WASHER NYLON	6
8	99826-038	BATTERY CHARGER COVER	1
9	23917-000	GROMMET .6875ID X 1	1
10	62486-000	GROMMET 1 X 1.375	1
11	352125-1	1/4-20 RIVET NUT 22 GA-10GA	2
12	16249-000	.3125-18 FLANGE	6
13	98879-001	THREAD STUD 5/16-18 X .75	6
14	1000-0429	PDM HARNESS MOUNT	1
15	1000-0394	5K POTENTIOMETER KIT	1
16	24198-001	BHMS #8-32 x .625 BLACK	4
17	21976-000	#8 LOCKWASHER EXTERNAL TOOTH	4
18	511-000	#8 FLATWASHER	4

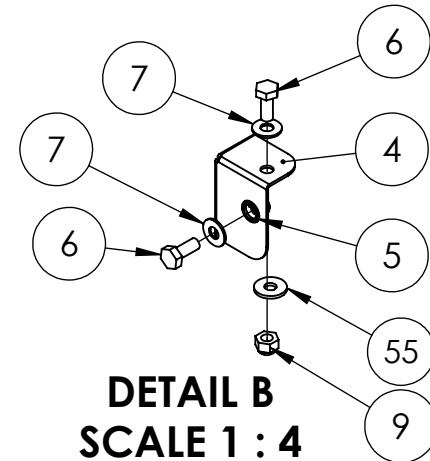
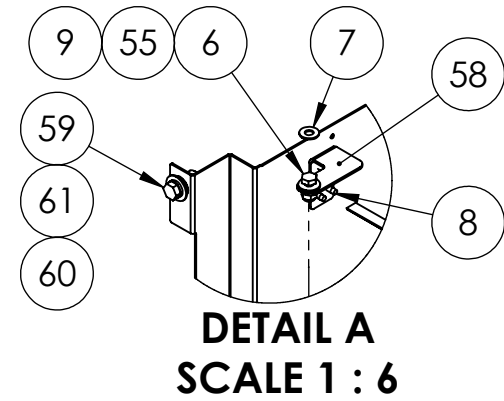
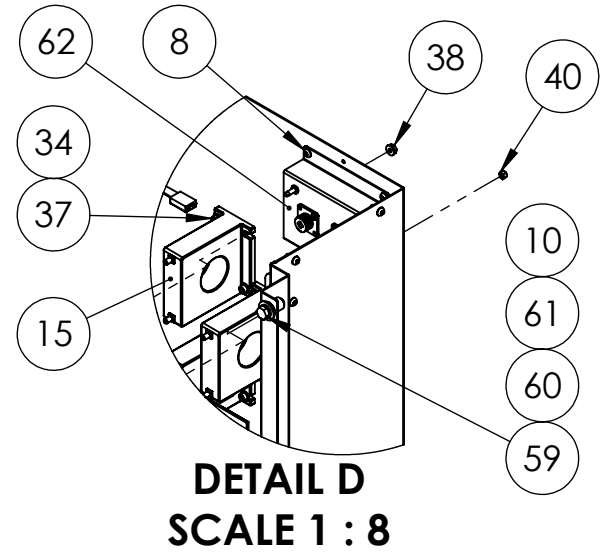
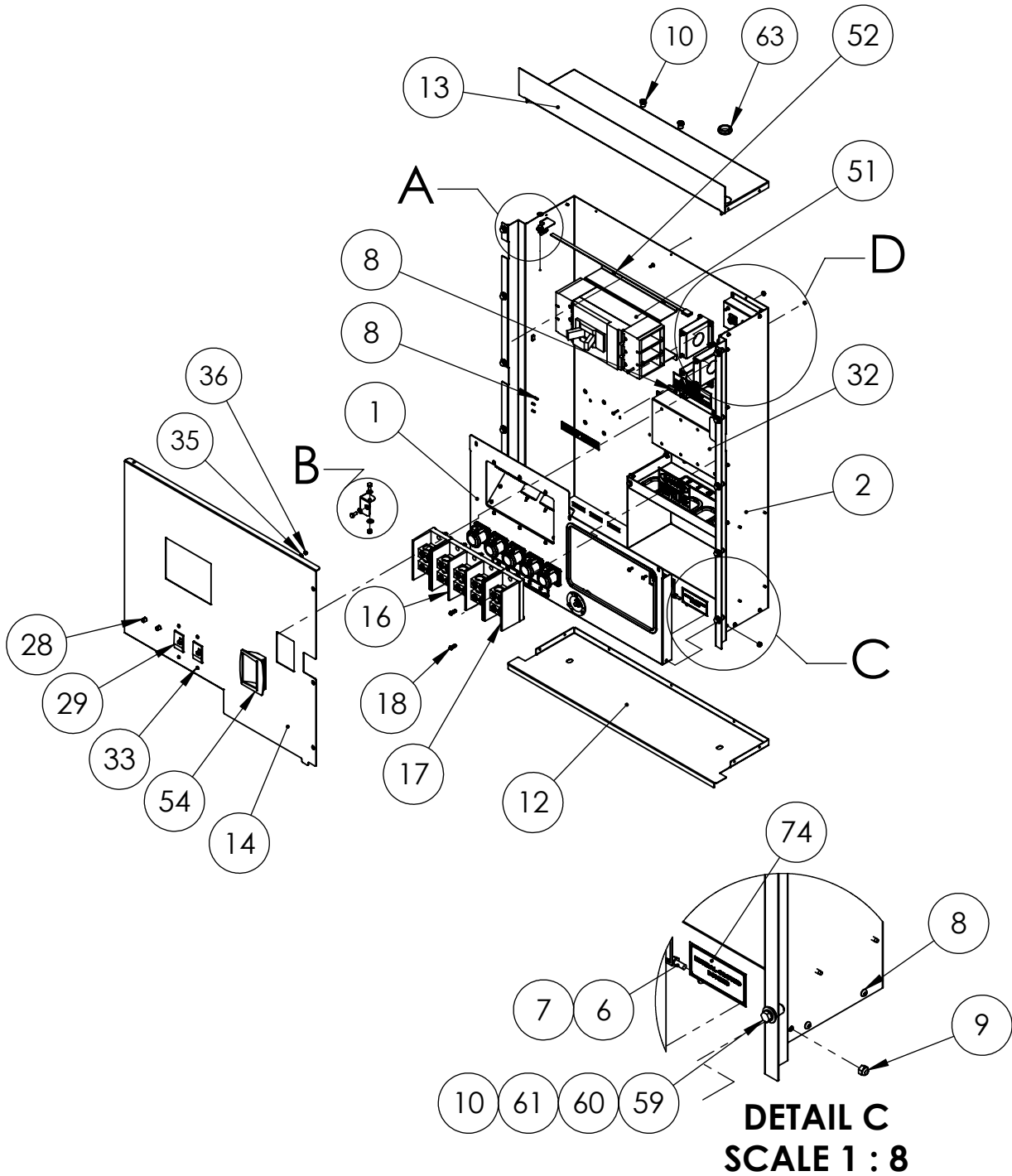
Controls Continued



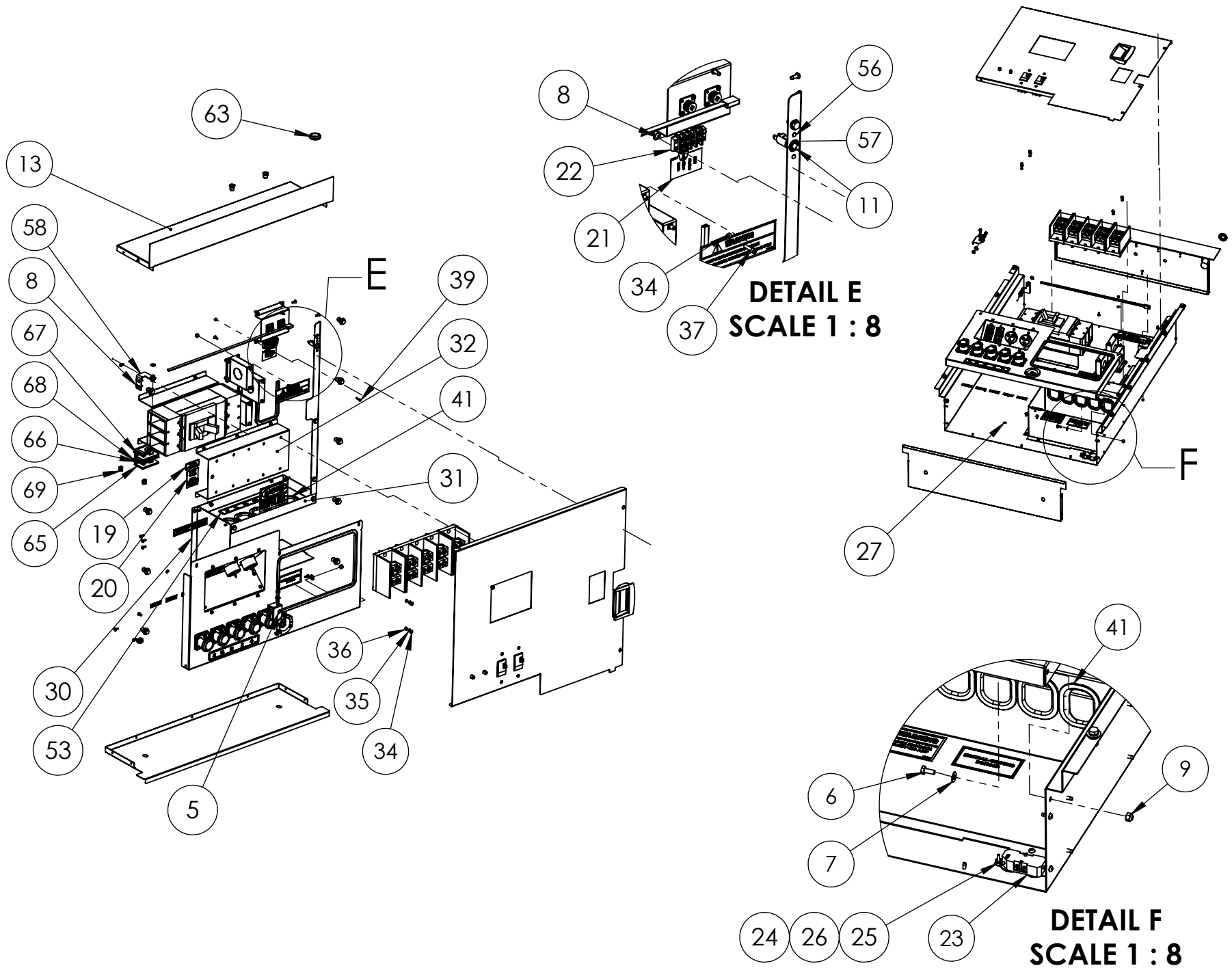
Controls Continued

ITEM NO.	PART NUMBER	DESCRIPTION	QTY.
1	351112-29	DEEP SEA ELECTRONICS 7310 MKII	1
2	351900-42	DIN RAIL MOUNTING PLATE	1
3	351900-44	COVER SUPPORT BRACKET	1
4	351900-45	DSE8610 CONTROL BOX BOTTOM	1
5	351900-47	DSE 7310 MKII FRONT PANEL	1
6	94980-003	THREAD STUD .25-20 X .750	2
7	96286-001	1/4" NYLON WASHER	4
8	21698-001	TORX PAN HEAD SCREW #10	21
9	64089-000	SPST, ROCKER SWITCH	2
10	48602-003	TERMINAL FEMALE 16-14 AWG .250 TAB	4
11	61898-000	TERMINAL FLAG 16/14AWG .250	2
12	23917-002	GROMMET, .375ID X 1	2
13	351900-51	PLUG MOUNTING PLATE	1
14	352017-001	WIRE DUCT, 8.5IN	2
15	64551-005	DIN RAIL 9.5"	1
16	80623-009	TERMINAL BLOCK, DIN MOUNTED, SPRING CAGE	12
17	80623-010	END BLOCK, DIN MOUNTED	3
18	80623-011	2-POLE TERMINAL BLOCK JUMPER	2
19	24988-000	SCREW 6-32 X 1/2 BIND	4
20	425-000	#6 FLATWASHER	8
21	51802-000	NUT HEX #6-32 NYLOCK	4
22	96925-002	14 PIN CONNECTOR	1
23	96925-006	16 PIN CONNECTOR	1
24	96923-001	TERMINAL, SOCKET, 18-16AWG	10
25	96924-001	TERMINAL, PIN, 18-16AWG	16
26	2489-003	DIN RAIL FUSE HOLDER 1-1/4 X 1/4IN	5
27	598-000	#10 WASHER	6
28	16600-005	DSE MKII ADVANCE POWER LOGO INSERT	1
29	16601-007	DSE 8610 MKII LIGHT LEGEND CARD INSERT	1
30	80623-012	3-POLE TERMINAL BLOCK JUMPER	1
31	95064-008	FUSE AGC 2 AMP	3
32	95064-000	FUSE AGC 3 AMP	1
33	95064-006	FUSE AGC 10 AMP	1
34	351095-16	DECAL, FUSES AND TERMINAL BLOCKS	1
35	99783-001	SWITCH, PUSH-PULL	1
36	99783-002	SWITCH CONTACT	1
37	97517-001	RHEOSTAT	1
38	351900-36	RHEOSTAT MOUNTING BRACKET	1
39	96923-101	PLUG TERMINAL	4
40	96333-001	LOW COOLANT MODULE	1
41	638-000	HEX NUT, .25IN	2
42	479-000	LOCK WASHER, .25" SPLIT	2
43	63941-004	DECAL FUSE WARNING (ENGLISH)	1
44	351900-52	DSE CONTROL BOX TOP	1
45	351900-53	DSE PANEL STOP	1
46	512-000	.25 WASHER	2
47	352125-1	1/4-20 RIVET NUT 22 GA-10GA	1
48	352120-1	1/4-20 X .500 FHCS	2
49	48602-004	TERMINAL MALE 16-14 AWG .250 TAB	1

Receptacle Panel Assembly



Receptacle Panel Assembly Continued.



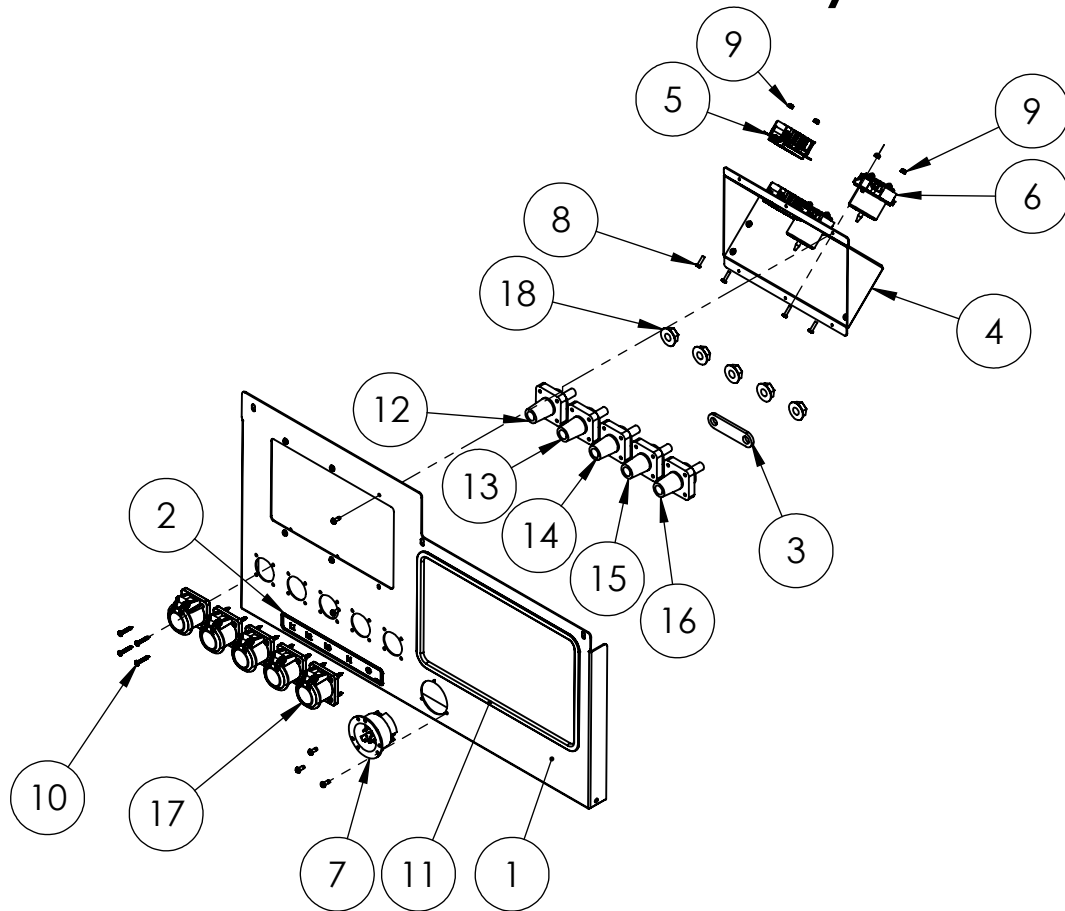
Receptacle Panel Assembly Continued.

ITEM NO.	PART NUMBER	DESCRIPTION	QTY.
1	1000-0813	CAMLOK DOOR ASSEMBLY	1
2	1000-0845	RECEPTACLE BOX	1
3	1000-1501	RECEPTACLE BOX DOOR LATCH	1
4	403200-010	LEFT SIDE HINGE TAB	1
5	352125-1	1/4-20 RIVET NUT 22 GA-10GA	6
6	476-000	.25-20X.625 HHB	10
7	512-000	.25 WASHER	10
8	21698-001	TORX PAN HEAD SCREW #10	54
9	47517-000	.25-20 NYLOCK	4
10	352126-1	RIVET NUT 5/16-18 .027-.150	12
11	71444-001	SWITCH PUSH BUTTON SPST	1
12	403200-009	RECEPTACLE BOX BOTTOM	1
13	403200-007	RECEPTACLE BOX TOP	1
14	1000-1010	RP130 RECEPTACLE BOX DOOR	1
15	80124-014	CT 800:5	3
16	97753-010	TERMINAL BLOCK 3PL 760 AMP 4GA	1
17	97753-011	TERMINAL BLOCK 1PL 760 AMP 4GA	2
18	64858-103	BHSCS .25-20 X .75 BUTTON HEAD SOCKET CAP SCREW	10
19	16503-000	DECAL-COPPER CONDUCTORS ONLY	1
20	16504-000	DECAL-NEUTRAL BONDED TO FRAME	1
21	99958-000	DECAL TERM STRIP	1
22	80623-008	4 PT TERMINAL BLOCK	1
23	50766-000	NEMA 5-20R DUPLEX RECEPTACLE	1
24	7792-000	RHMS 6-32 X .625	2
25	22989-000	#6 LOCKWASHER	2
26	394-000	NUT HEX #6-32	2
27	91684-000	RETAINER RING 1/4 TURN SPLIT RING	1
28	91286-001	CIRCUIT BREAKER, 20A, 1 PL	2
29	57030-000	CIR. BRK. 50A-2PL-240V	2
30	1000-0424	RECEPTACLE PANEL DIVIDER	1
31	1000-0425	RECEPTACLE PANEL DIVIDER, TOP	1
32	1000-0421	TERMINAL BLOCK RISER	1
33	24198-000	BHMS #8-32 X 5/8	4
34	598-000	#10 WASHER	16
35	21976-000	#8 LOCKWASHER EXTERNAL TOOTH	4
36	5113-000	NUT HEX # 8	4
37	64872-000	SOC.HCS 10-24 X 3/4 BLK	12
38	99671-000	#10-24 HEX NUT	14
39	7614-000	RHMS 8-32 X .75	2
40	95985-000	NUT HEX #8-32 NYLOK	2
41	58684-000	EDGE TRIM 10IN	5
42	48602-011	TERM MALE 12-10AWG .250X.032	1
43	91320-001	TERMINAL RING, 8AWG, 3/8" STUD	4
44	91320-002	TERMINAL, RING, 8AWG, 1/2 STUD	2

Receptacle Panel Assembly Continued.

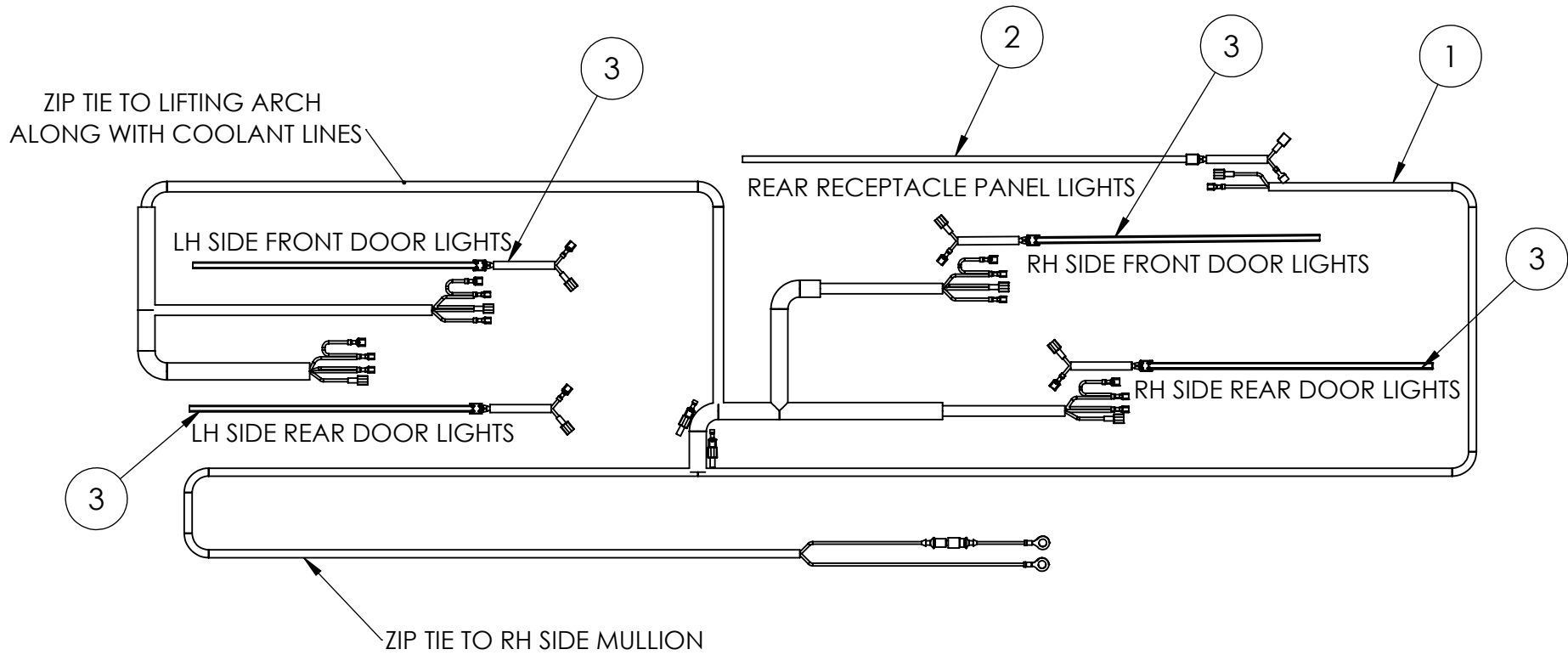
ITEM NO.	PART NUMBER	DESCRIPTION	QTY.
45	48602-003	TERMINAL FEMALE 16-14 AWG .250 TAB	6
46	64704-000	TERM., RING, 4/0AWG, 1/2" STUD	11
47	22370-007	TERMINAL SPADE 16/14AWG #10STUD	4
48	4156-000	TERMINAL RING 12-10 #10 STUD	2
49	81963-001	TERMINAL RING 18-22 AWG #10	4
50	96924-001	TERMINAL, PIN, 18-16AWG	4
51	81097-075	CIR BRK LGL 3PH 400A 600V	1
52	1000-1009	CB RISER	1
53	351591-22	TERMINAL BLOCK DECAL	1
54	300223-2	HANDLE, FLUSH PULL	1
55	96286-001	1/4" NYLON WASHER	4
56	95568-001	THD.STD. 10-24 X 3/8 SELF-CLINCH	2
57	1000-1502	DOOR SAFETY SWITCH MOUNTING PLATE	1
58	1000-1503	SWING PANEL UPPER SUPPORT	1
59	65001-002	.3125-18X1 HHB SS	10
60	480-000	5/16 SPLIT LOCKWASHER	10
61	65005-001	5/16 WASHER SS	10
62	1000-1674	PARALLELING RISER ASSEMBLY	1
63	62486-000	GROMMET 1 X 1.375	1
64	16248-000	.25-20 FLANGE NUT	10
65	97753-022	175A 600V, 1PL, SQUARE-D DISTRIBUTION BLOCK 9080LBA162104	2
66	420-000	RHMS 10-24 X .75	4
67	484-000	#10 LOCKWASHER SPLIT	4
68	352127-1	10-24 RIVET NUT	4
69	96116-006	PUSH CLIP CABLE TIE MOUNT BASE .25 HOLE	5
70	2000-0199	DOOR LED STRIP	1
71	15750-002	PHASE A DECAL	1
72	15750-006	SHORE POWER DECAL	1
73	351591-32	WARNING MAX CAMLOCK AMP	1
74	351591-33	NEUTRAL -GROUND BONDED	1
75	15750-000	GROUND DECAL (WHITE LETTERS)	1
76	15750-003	PHASE B DECAL	1
77	15750-004	PHASE C DECAL	1
78	15750-005	NEUTRAL DECAL	1
79	91498-000	DECAL-DANGER HIGH VOLTAGE 3.5x5	1
80	15209-003	UL-DECAL ELECTRICAL SHOCK CAN KILL	1
81	351591-27	SHUTDOWN WARNING	1
82	80623-013	2 POLE TERMINAL BLOCK JUMPER	1
83	511-000	#8 FLATWASHER	4
84	58684-022	EDGE TRIM 22.625"	1
85	7547-001	TERMINAL RING 16/14AWG 1/2 STUD	3
86	91457-001	TERM RING 10-12AWG .5	4
87	21850-002	TERMINAL HOOK 16-14 AWG #10STUD	4

Camlock Door Assembly



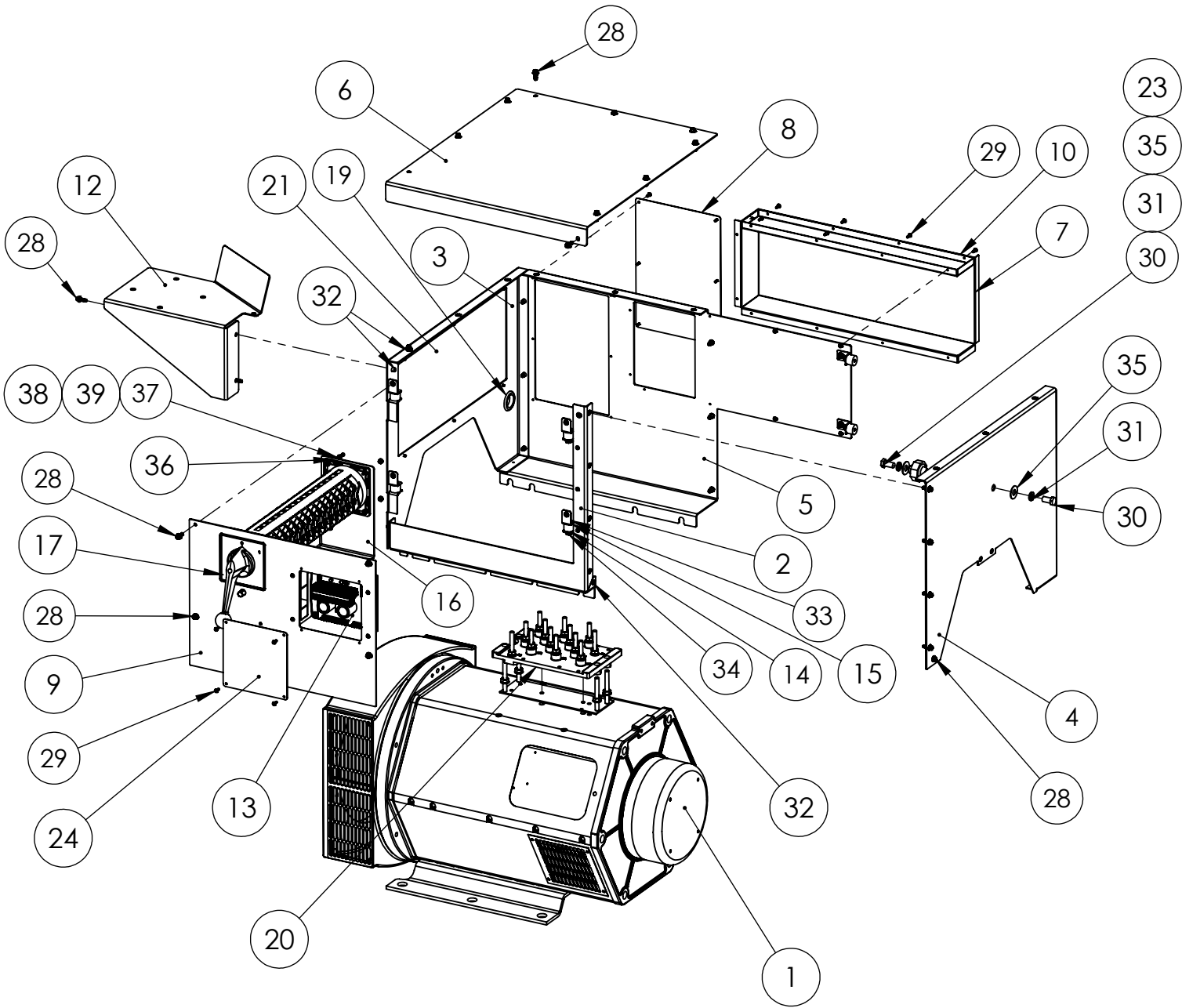
ITEM NO.	PART NUMBER	DESCRIPTION	QTY.
1	1000-0814	CAMLOK DOOR	1
2	351591-24	TERMINAL BLOCK DECAL G1-G	1
3	57627-002	72mm link bar	1
4	1000-0423	DUPLEX BOX	1
5	15147-003	RECEPTACLE NEMA 5-20R GFCI	2
6	91889-000	RECEPT 125/250V 50A	2
7	99896-005	PLUG, REVERSE 20A 125/250V, NEMA L14-20 FLANGE INLET, 7164K71	1
8	24198-001	BHMS #8-32 x .625 BLACK	8
9	95985-000	#8-32 NYLOK HEX NUT	8
10	24738-001	#8x1 SS SHEET METAL SCREW	20
11	58684-033	EDGE TRIM 42"	1
12	351282-42	CAM LOCK CONNECTOR, FEMALE, BLACK	1
13	351282-52	CAM LOCK CONNECTOR, FEMALE, RED	1
14	351282-32	CAM LOCK CONNECTOR, FEMALE, BLUE	1
15	351282-22	CAM LOCK CONNECTOR, FEMALE, WHITE	1
16	351282-12	CAM LOCK CONNECTOR, FEMALE, GREEN	1
17	351282-601	CAM COVER CLEAR WITH MOUNTING SCREWS	5
18	16248-001	.5-13 FLANGE NUT	5
19	21698-001	TORX PAN HEAD SCREW #10	13

LED Light Kit



ITEM NO.	PART NUMBER	DESCRIPTION	QTY.
1	1000-1124	LED LIGHT HARNESS	1
2	1000-3017	22 INCH LED LIGHT STRIP WITH HARNESS	1
3	1000-3018	14 INCH LED LIGHT STRIP WITH HARNESS	4

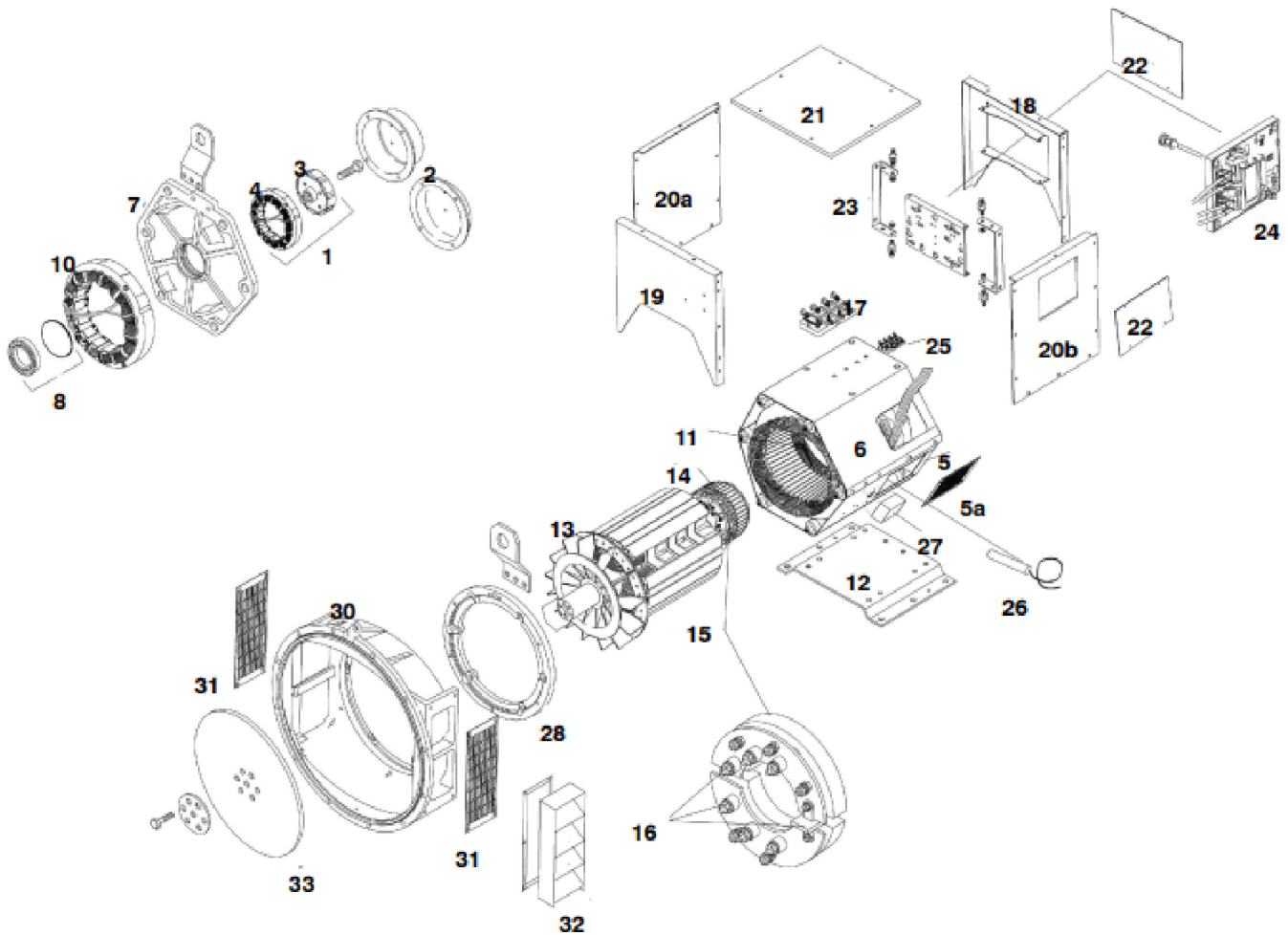
Gen End Panel Assembly



Gen End Panel Assembly Continued

ITEM NO.	PART NUMBER	DESCRIPTION	QTY.
1	350004-100	GEN.END, UCI274ETL, SAE#3/11.5", WINDING#311, 12-LEAD	1
2	1000-0833	GEN END LEFT SIDE BOTTOM CAP	1
3	1000-0837	GEN END FRONT PANEL	1
4	1000-0836	GEN END BACK PANEL	1
5	1000-0834	GEN END RIGHT SIDE PANEL	1
6	1000-0840	GEN END TOP COVER FRONT	1
7	1000-0841	RACEWAY COVER	1
8	1000-0835	RIGHT SIDE COVER TERMINAL BOX	1
9	1000-0839	ISOLATED SWITCH PANEL	1
10	1000-0843	RACEWAY TOP AND BOTTOM	1
11	1000-0838	SHOCK MOUNT TABS	1
12	1000-0802	AIR CANISTER SUPPORT	1
13	1000-3016	DSE AVR KIT RPXX	1
14	64062-002	SHOCKMOUNT .25 50 DURO	6
15	1000-3037	SHOCK MOUNT TAB	4
16	410200-016	VOLTAGE SWITCH BRACKET ASSEMBLY	1
17	99898-013	99898-013 VOLTAGE SELECTOR SWITCH, RP200	1
18	15424-000	SHOCKMOUNT BLACK -60	2
19	23917-005	GROMMET 1-5/16" ID	1
20	8-102	13-POST TERMINAL BLOCK	1
21	1000-0987	GEN END SERVICE PANEL	1
22	727060-007	SHOCK MOUNT TAB	2
23	94378-003	STANDOFF INSULATOR, 2" HEIGHT, 1/2"-13 THREAD, ALUMINUM INSERT, 600V	1
24	727060-010	AVR COVER	1
25	300531	LW 4-0 GA WIRE, BLACK, 600V, 50FT	1
26	300114	LW 3/0 GA, BLACK, 600V/150C	1
27	350471	18 GA SHIELDED PAIR	1
28	352120-2	1/4-20 X .75 FHCS	33
29	21698-001	TORX PAN HEAD SCREW #10	40
30	48178-000	HHCS 1/2-13 X 1	2
31	636-000	LOCKWASHER 1/2 SPLIT	2
32	352125-1	1/4-20 RIVET NUT 22 GA-10GA	31
33	352120-1	1/4-20 X .500 FHCS	4
34	16248-000	.25-20 FLANGE NUT	6
35	21867-000	FLAT WASHER	2
36	5315-000	NUT HEX 10-24 NYLON	4
37	484-000	LOCKWASHER #10 SPLIT	4
38	598-000	#10 WASHER	8
39	64872-000	SOC.HCS 10-24 X 3/4 BLK	4
40	61898-000	TERMINAL FLAG 16/14AWG .250	2
41	48602-003	TERMINAL FEMALE 16-14 AWG .250 TAB	2
42	48602-024	TERMINAL FEMALE 16-14AWG .187	1
43	7547-001	TERMINAL RING 16/14AWG 1/2 STUD	4
44	96924-001	TERMINAL, PIN, 18-16AWG	6
45	64704-000	TERM., RING, 4/0AWG, 1/2" STUD	4
46	90344-000	TERM., RING, 2AWG, 3/8 STUD	36
47	91321-002	TERMINAL RING 2 GA 1/2 STUD	16
48	99823-001	TERMINAL LUG .500 3/0 WIRE	4
49	91320-001	TERMINAL RING, 8AWG, 3/8" STUD	4
50	91320-002	TERMINAL, RING, 8AWG, 1/2 STUD	2

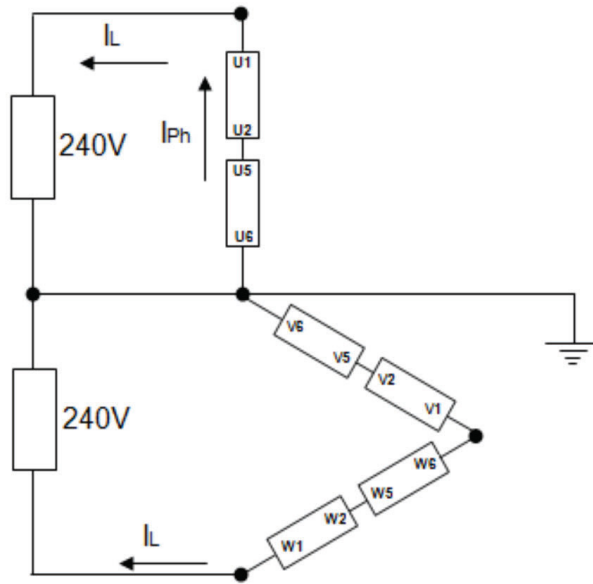
Generator



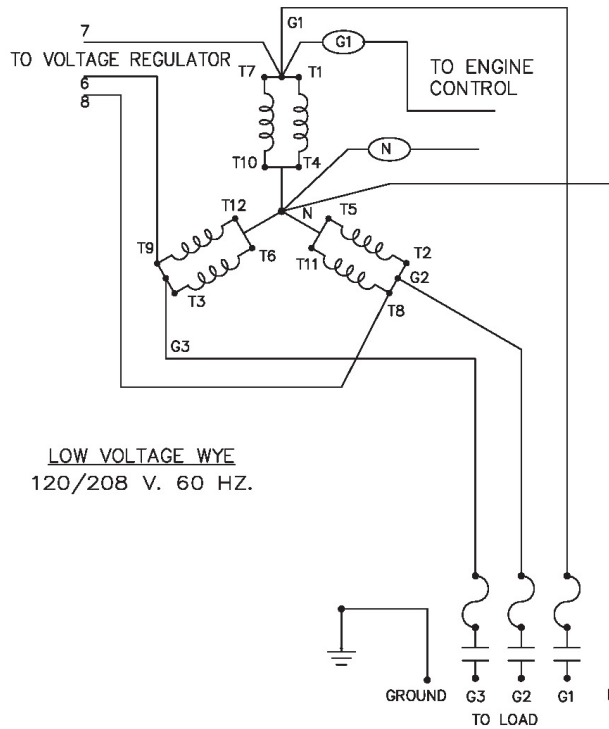
350004-100, UCI274E1L			
GENERATOR ENDS (AVR Excitation)			
ITEM NO.	PART NO	DESCRIPTION	QTY
1	350818-9	VOLTAGE REGULATOR, DSE A109 CAN J1939	1
2	8-100	DIODE ASSEMBLY	1
3	350005-401	FUSE, 6.3A, 600V	3

Generator Connection

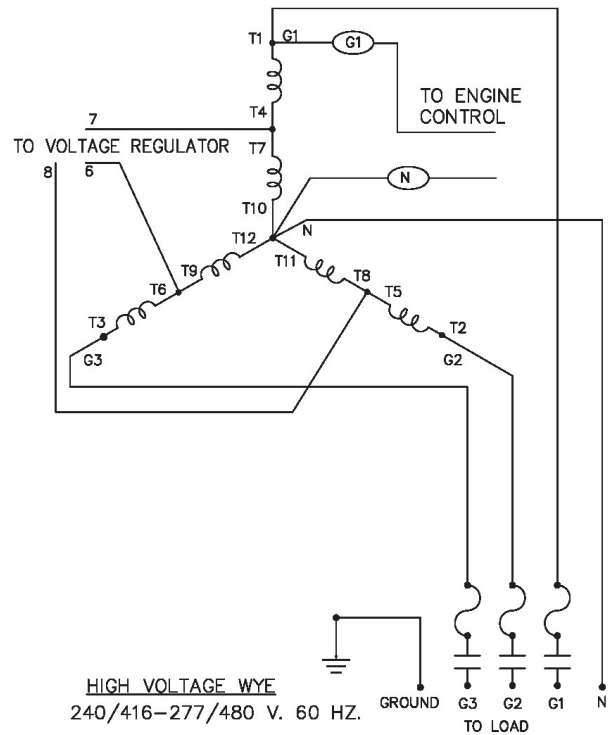
SINGLE PHASE ZIG ZAG



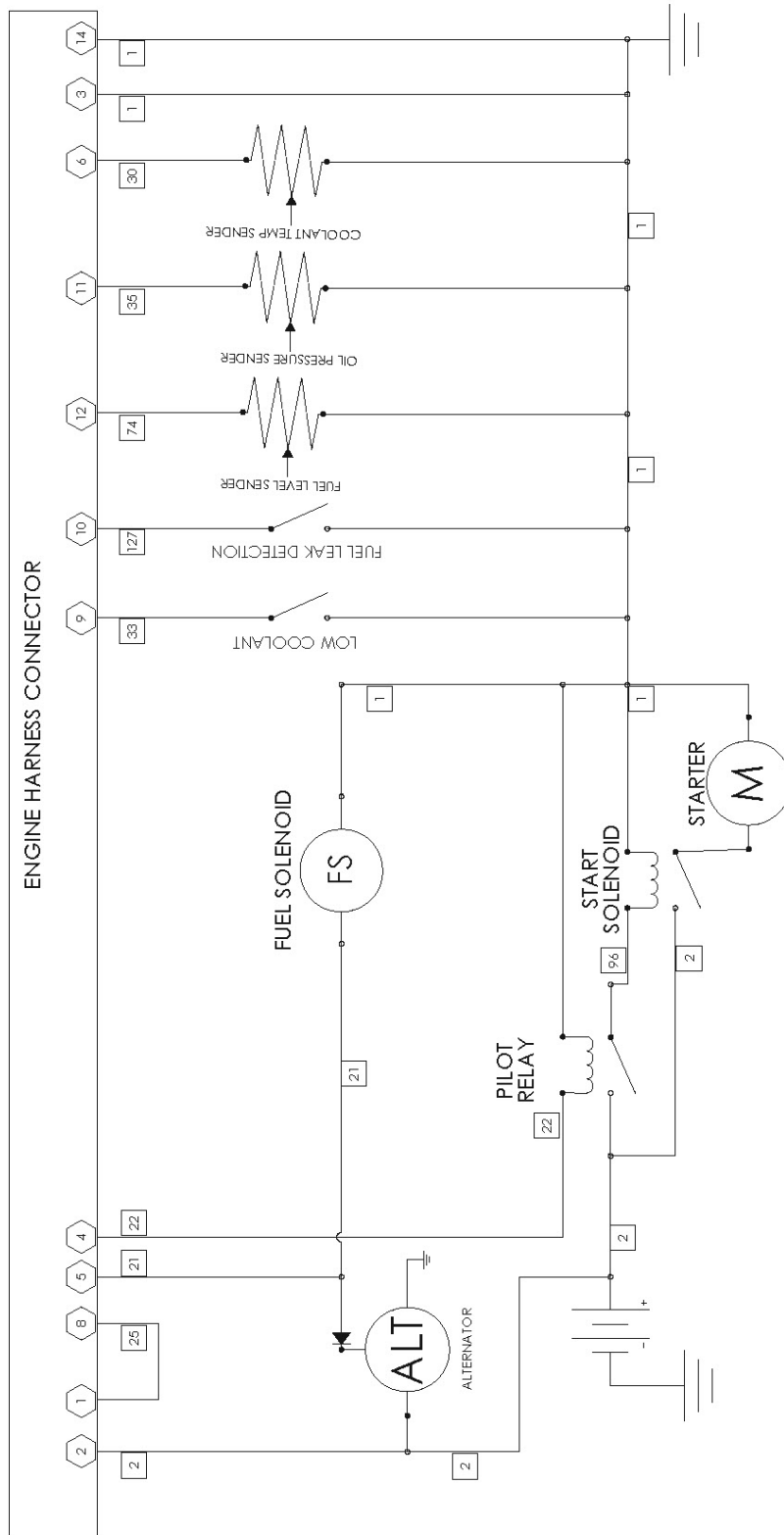
THREE PHASE AC WIRE LOW WYE



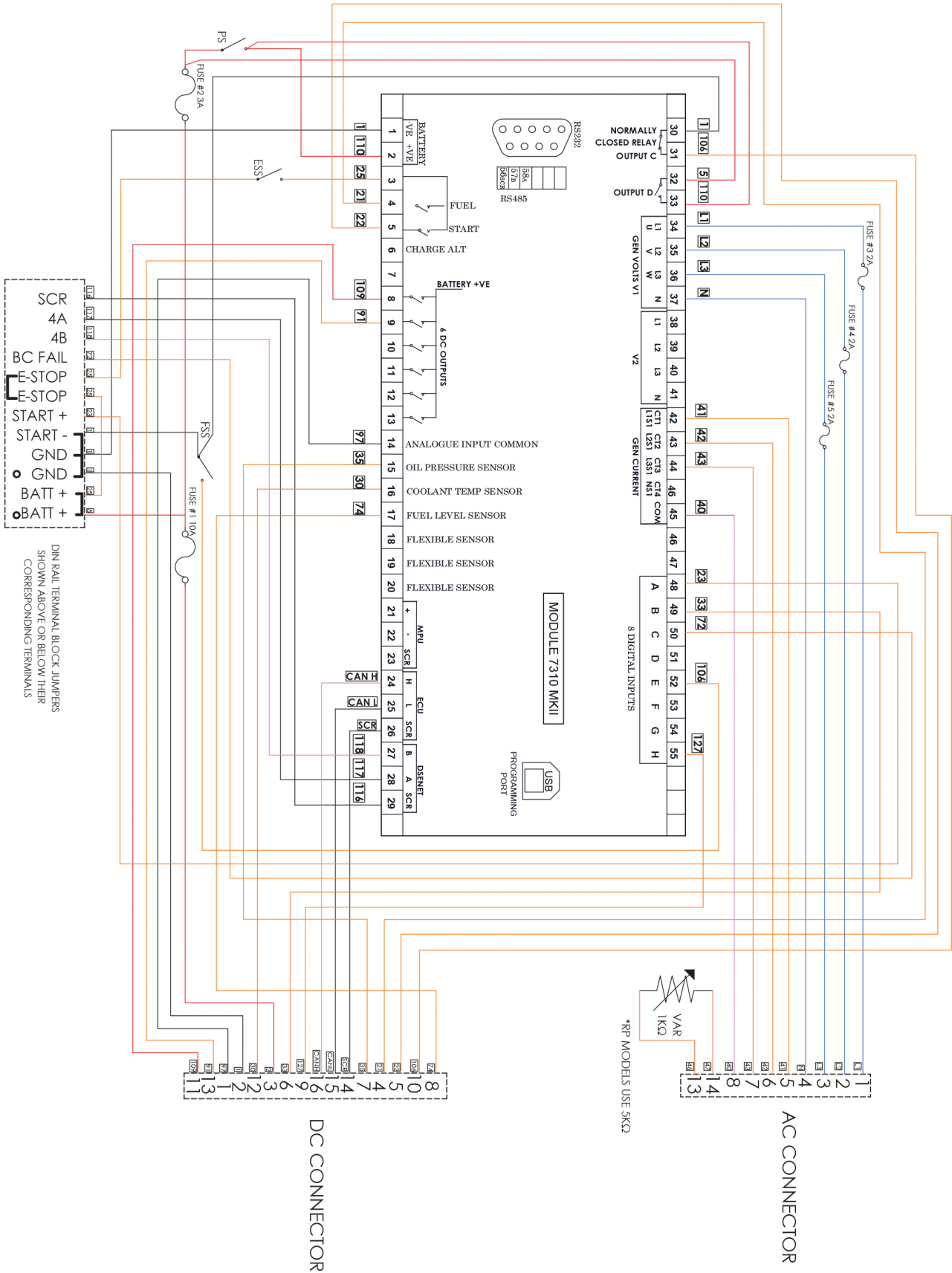
THREE PHASE AC WIRE HIGH WYE



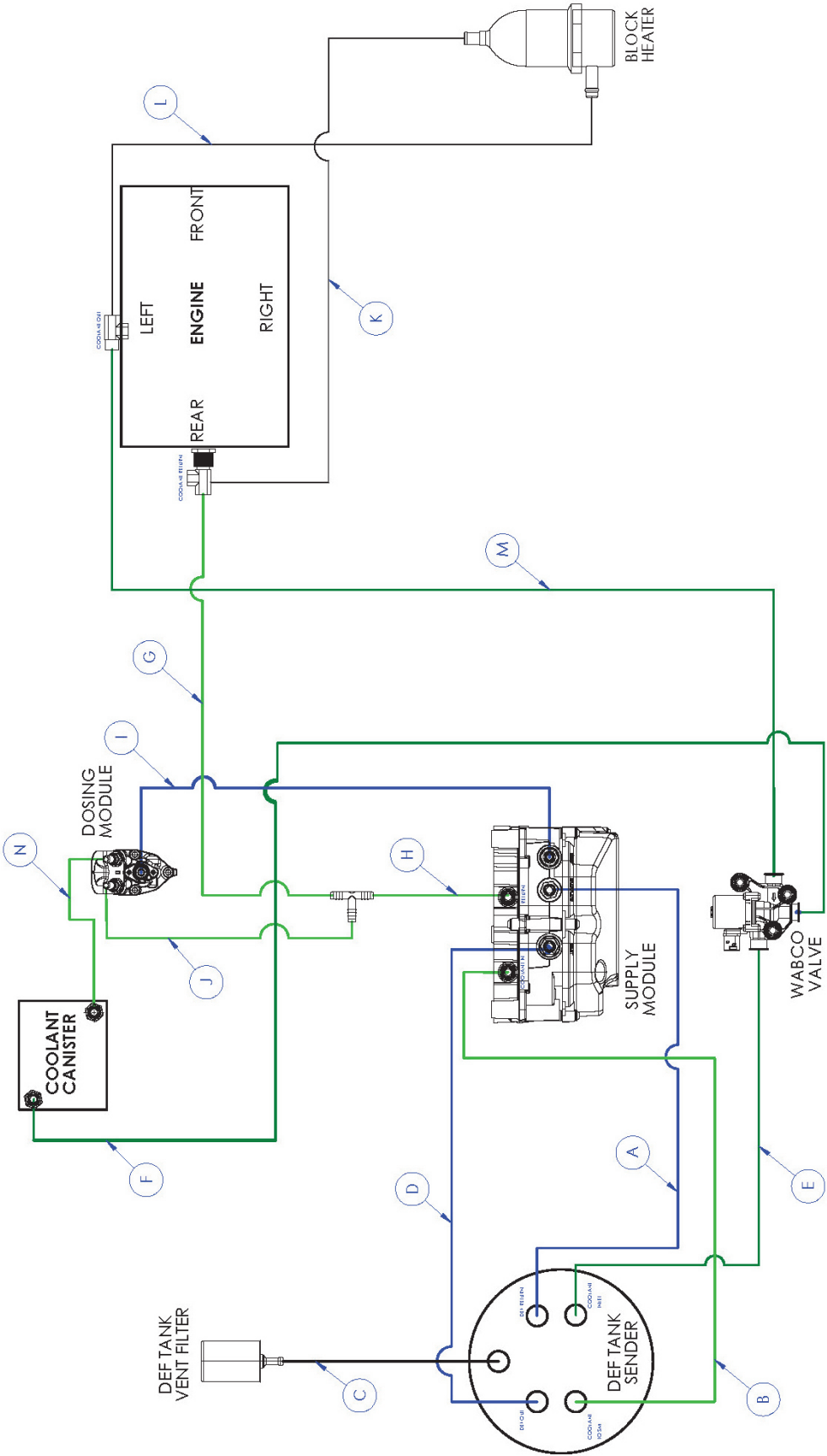
Engine Harness



Controller Schematic



DEF Schematic



Selector Switch Schematic

