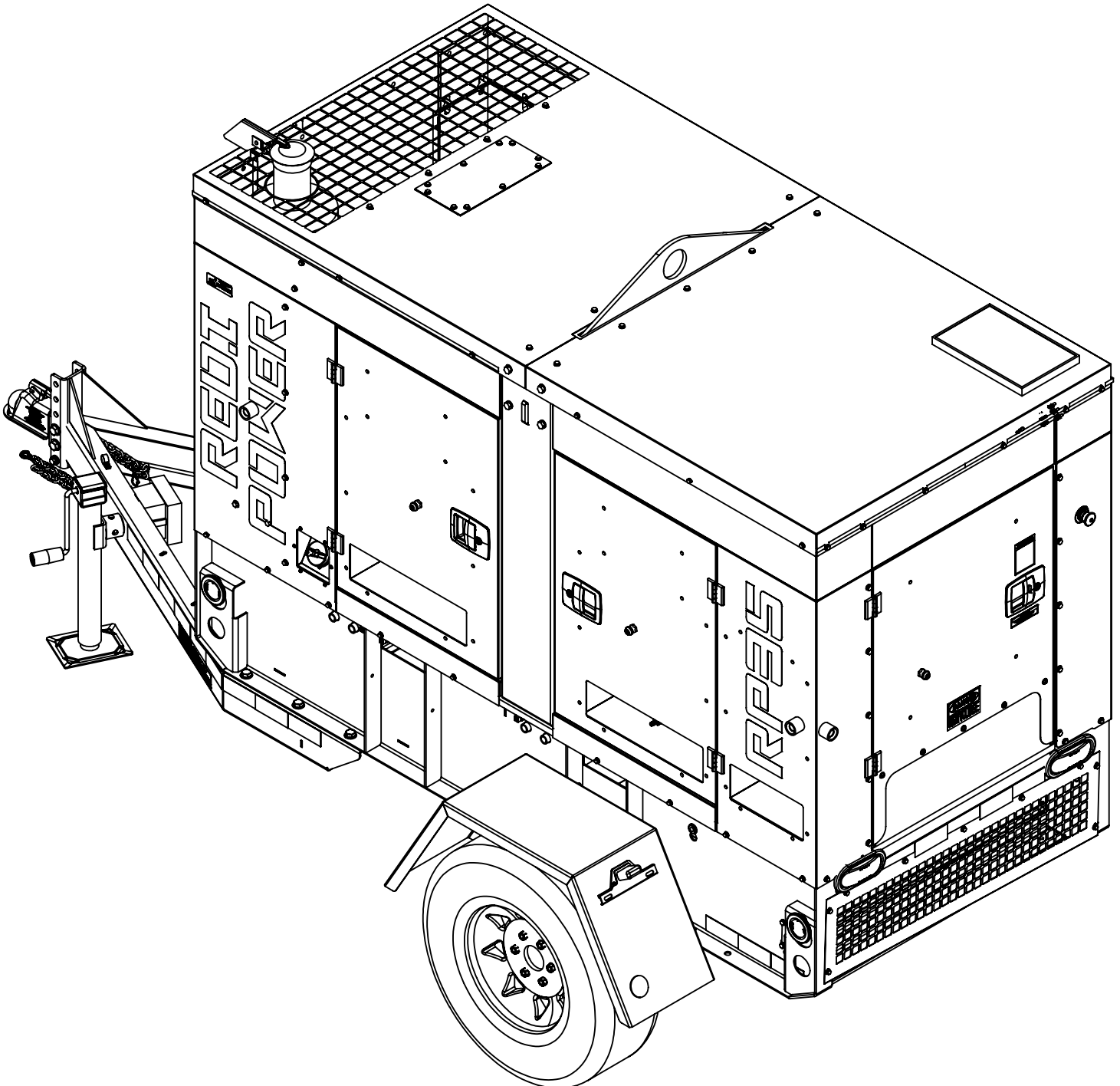


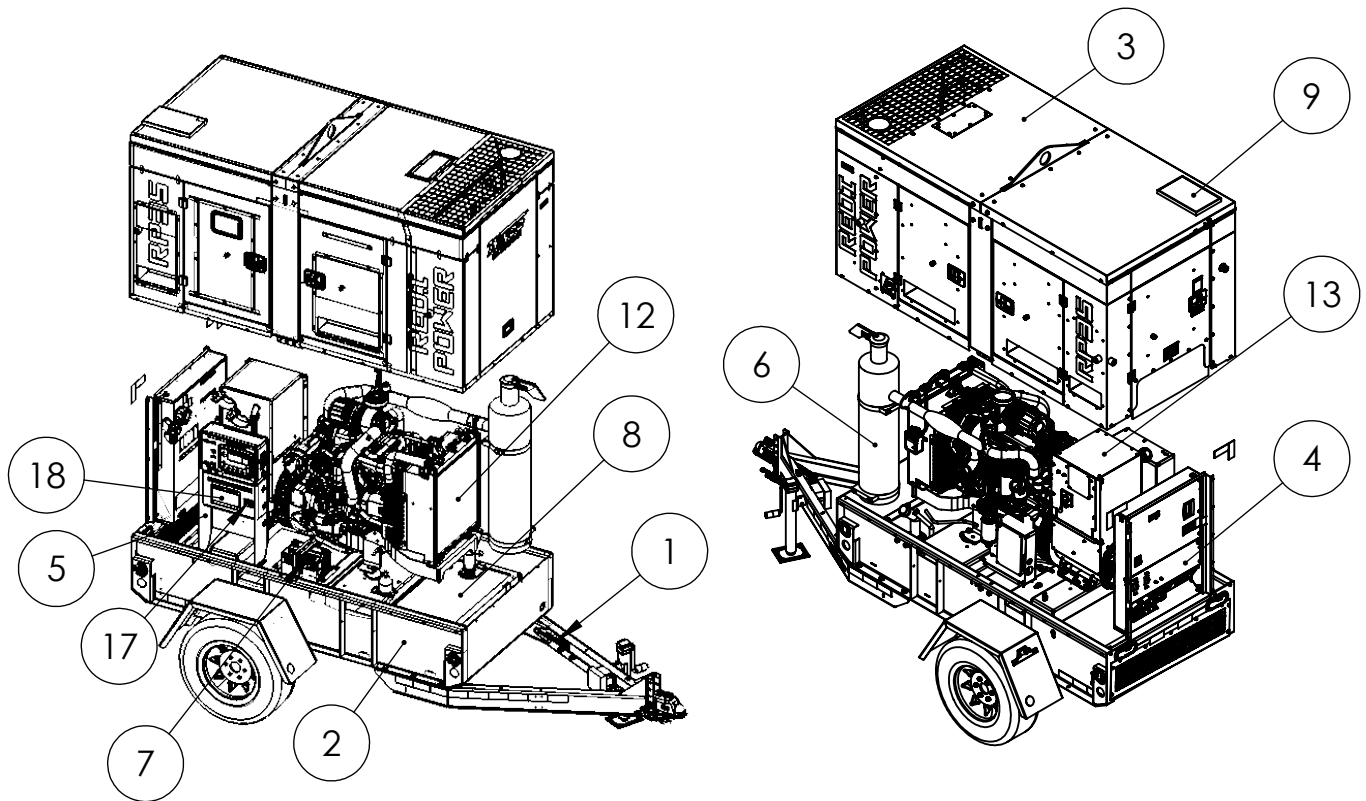


# RP35F4-XX/1 Parts List



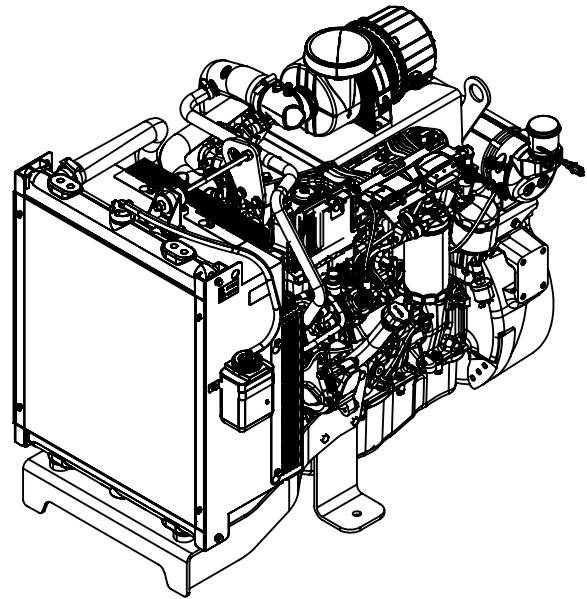
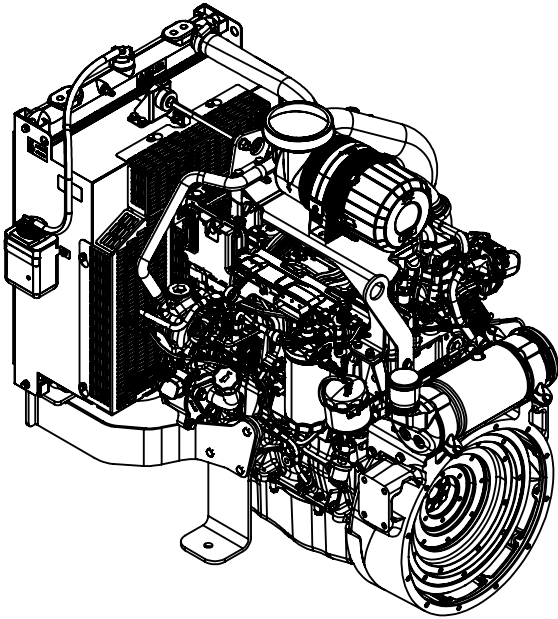
**WINCO Service**  
Phone: 507-357-6831  
Email: [service@wincogen.com](mailto:service@wincogen.com)  
[www.wincogen.com](http://www.wincogen.com)

# General Assembly



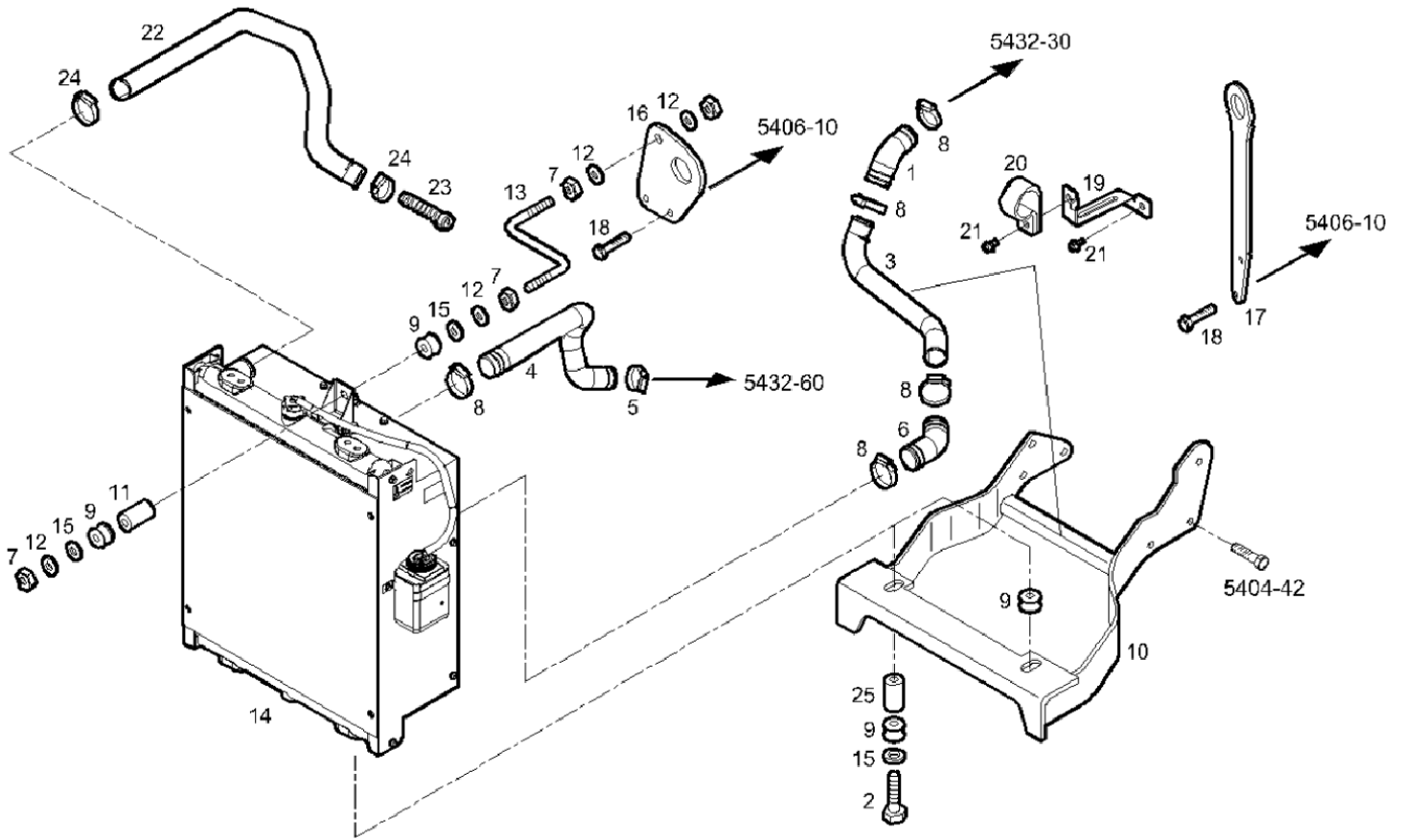
ITEM NO.	PART NUMBER	DESCRIPTION	QTY.
1	760060-000	TRAILER 5000LB	1
2	1000-0648	BASE WELDMENT	1
3	1000-0631	HOUSING ASSEMBLY	1
4	1000-0634	RECEPTACLE BOX ASSEMBLY	1
5	703060-001	CONTROL PEDESTAL ASSEMBLY	1
6	807060-000	RP50 EXHAUST SYSTEM	1
7	705050-000	BATTERY TRAY KIT RP50	1
8	704060-000	FUEL SYSTEM, RP50	1
9	405020-010	SOLAR PANEL KIT	1
10	352020-24	BATTERY CHARGER KIT 12V 5 AMP	1
11	411050-001	ENGINE /ECU HARNESS F5C FPT	1
12	350001-108	ENGINE, FPT, 3.4L (LOW POWER), F34TE1W.S550, I-4, TURBO, 50HP, DIESEL, ECU, 12V, TIER 4 FINAL, SAE#3-11.5, 1800RPM, 60HZ	1
13	1000-0641	STL2 K GEN END WITH SWITCH ASSEMBLY	1
14	408050-001	HARDWARE KIT	1
15	760060-019	TRAILER BODY HARNESS	1
16	411050-003	HARNESS FTP F5C	1
17	16200-521	MAINTENANCE KIT DECAL	1
18	63966-005	KIT, NAMEPLATE WINCO	1

# Engine



ITEM NO.	PART NUMBER	DESCRIPTION	QTY.
1	6-137	AIR FILTER	1
2	6-138	OIL FILTER	1
3	6-139	FUEL FILTER	1
4	6-140	WATER SEPARATOR FILTER	1
ALL ITEMS LISTED IN THE ABOVE TABLE ARE INCLUDED WITH A 16200-021 MAINTENANCE KIT PURCHASE			
5	6-218	STARTER MOTOR	1
6	6-217	ALTERNATOR	1
7	6-219	FAN BELT	1
Contact Winco service for full engine parts support.			

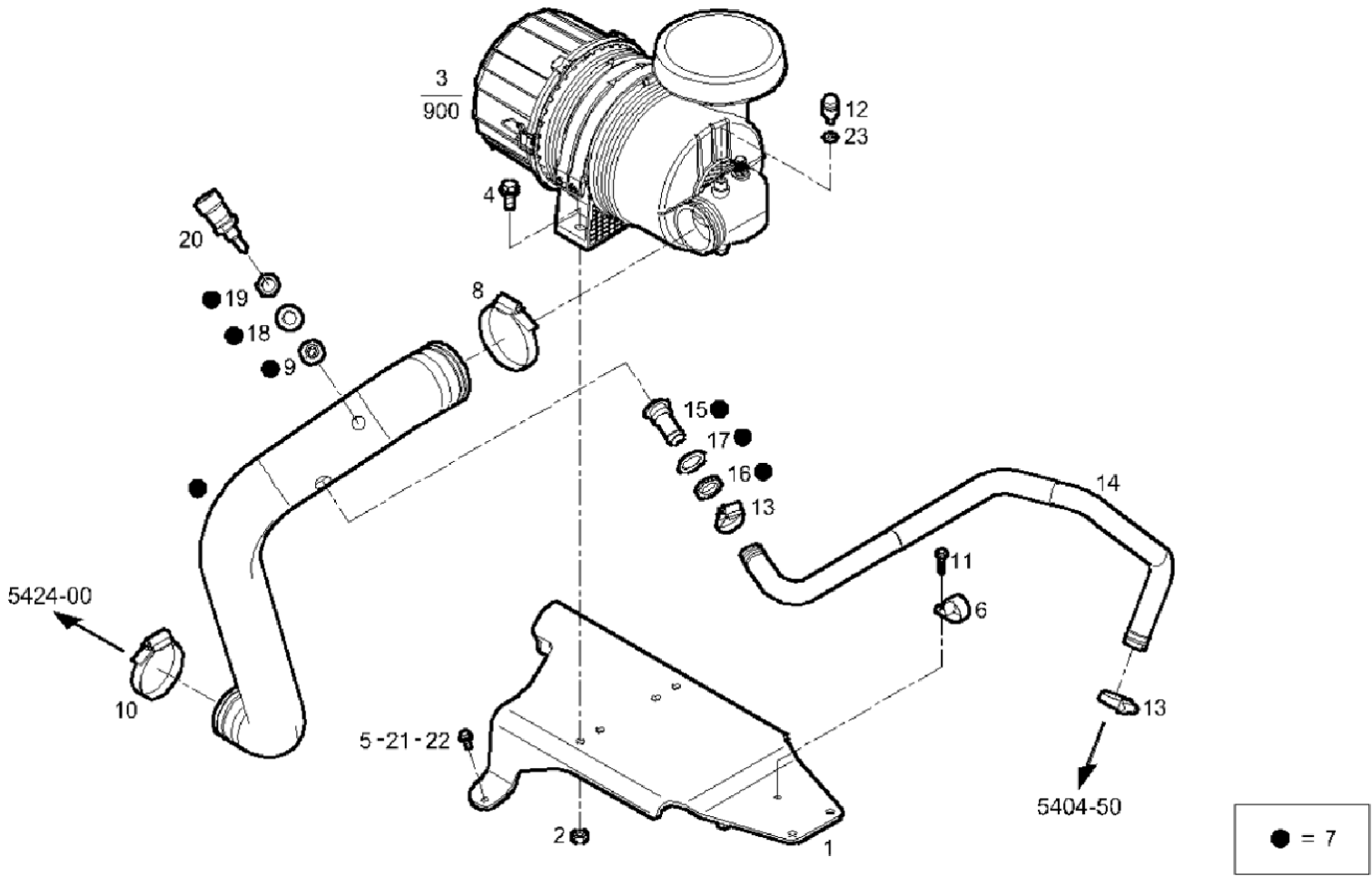
# Radiator Assembly



ITEM NO.	PART NUMBER	DESCRIPTION	QTY.
1	6-199	RUBBER SLEEVE	1
4	6-200	RUBBER SLEEVE	1
6	6-201	RUBBER SLEEVE	1
22	6-202	RUBBER SLEEVE	1
Contact Winco service for full engine parts support.			

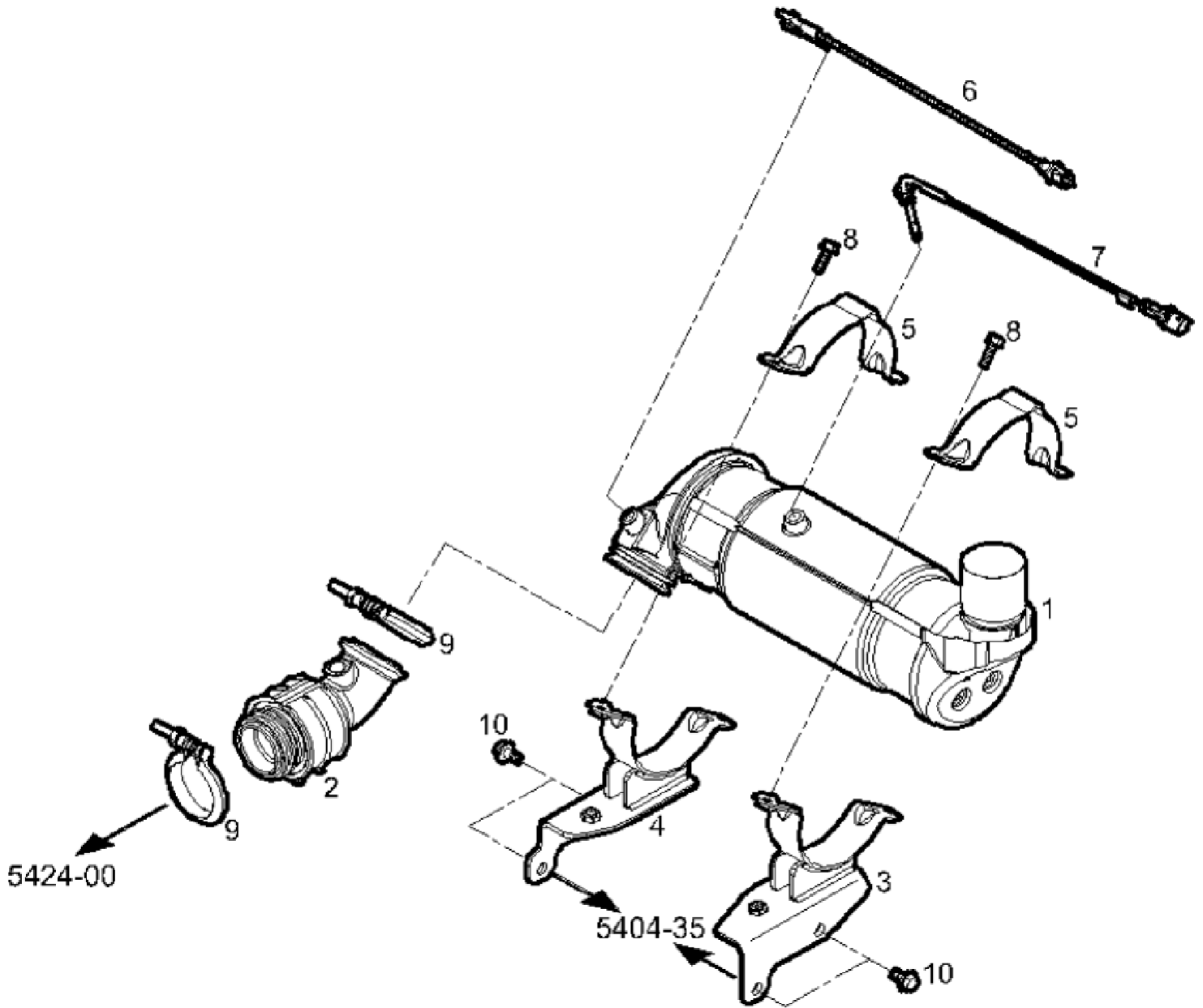


# Engine Intake Assembly



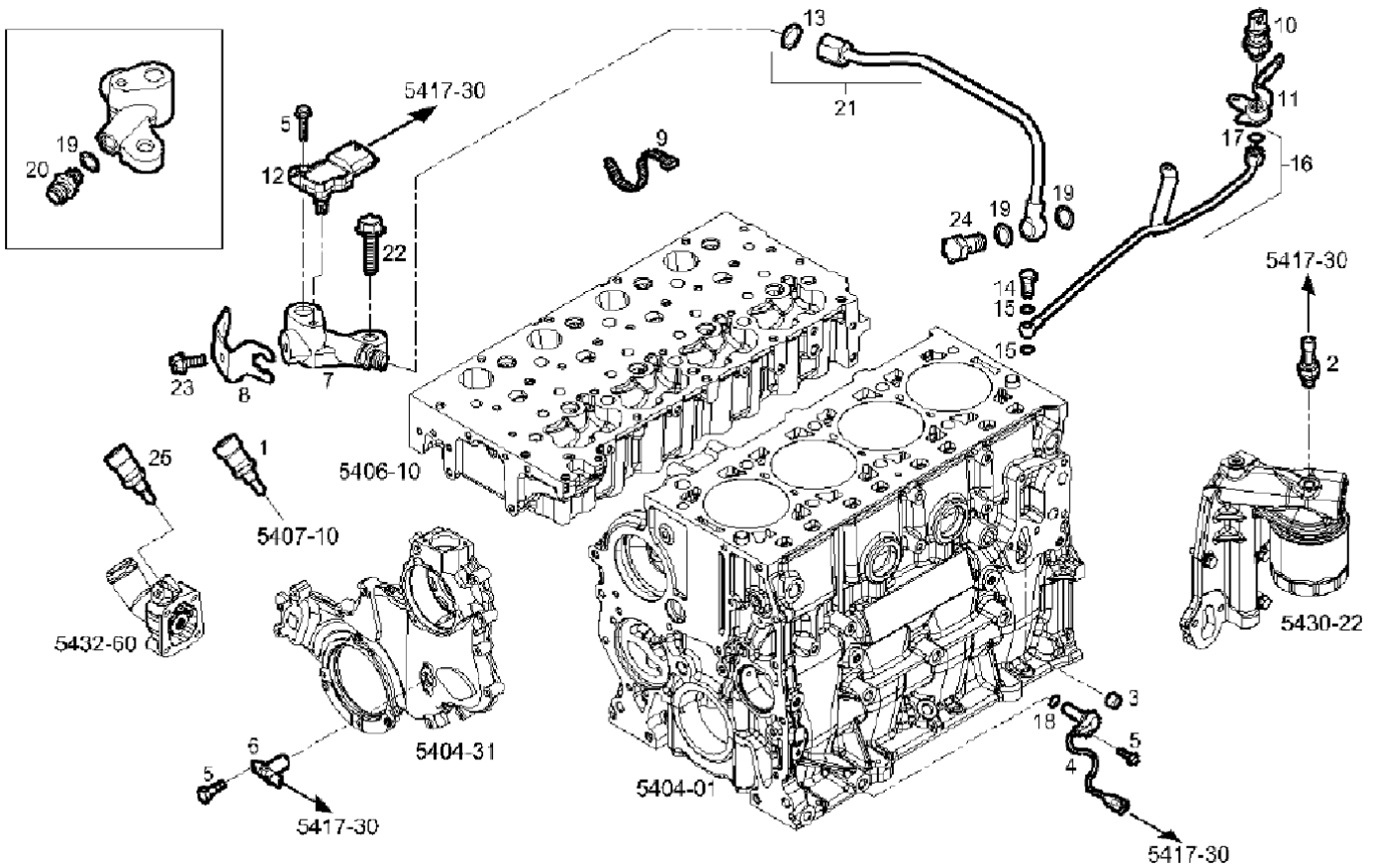
ITEM NO.	PART NUMBER	DESCRIPTION	QTY.
7	6-180	FILTER HOSE	1
14	6-213	RUBBER SLEEVE	1
20	6-133	AIR TEMP SENSOR	1
Contact Winco service for full engine parts support.			

# Particle Filter and Temp Sensor



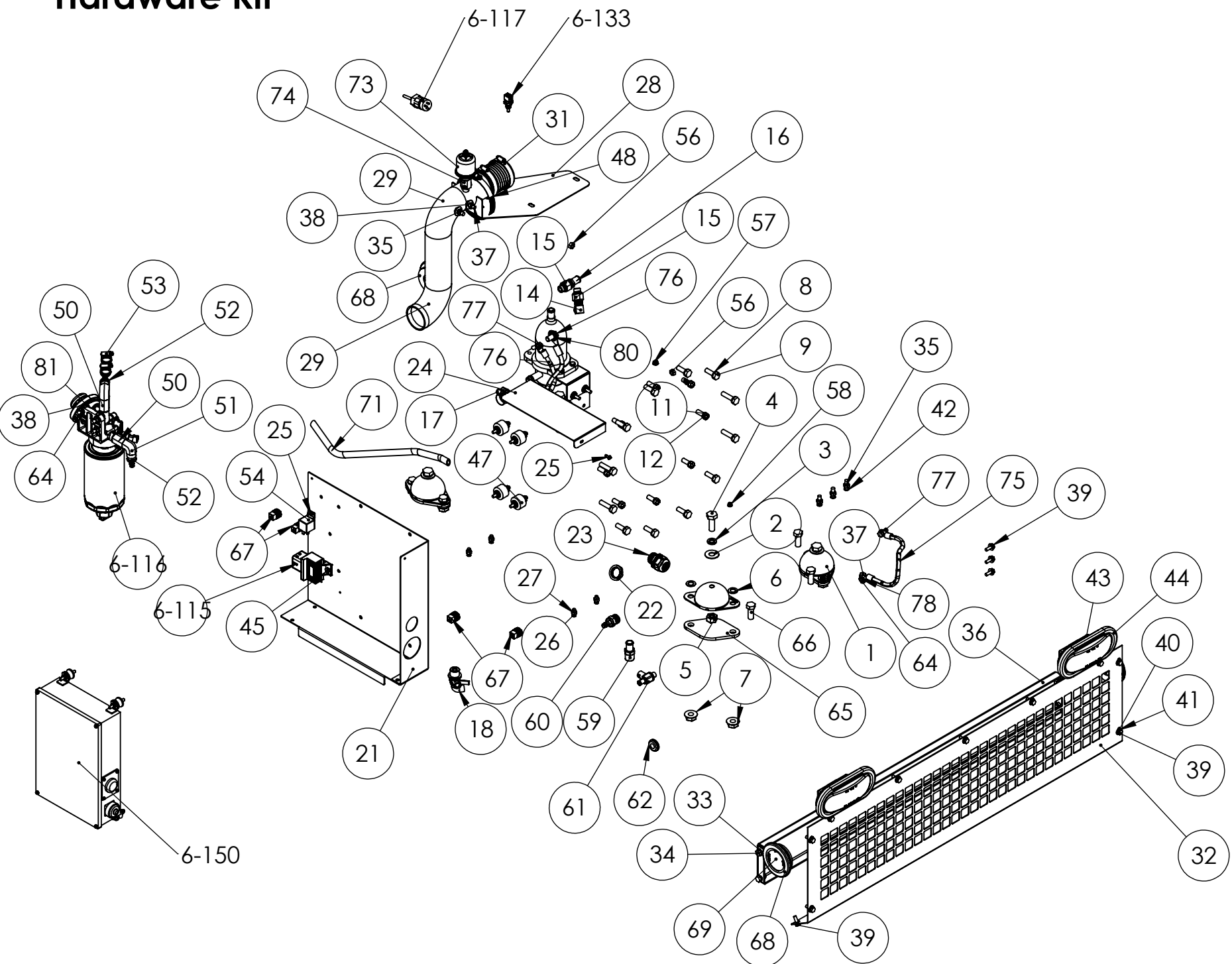
ITEM NO.	PART NUMBER	DESCRIPTION	QTY.
1	6-210	DPF PARTICLE FILTER	1
6	6-211	EXHAUST GAS TEMP SENSOR	1
7	6-212	EXHAUST GAS TEMP SENSOR	1
Contact Winco service for full engine parts support.			

# Sensors



ITEM NO.	PART NUMBER	DESCRIPTION	QTY.
1	6-203	TEMP TRANSMITTER	1
2	6-204	PRESSURE SWITCH	1
4	6-205	SPEED SENSOR	1
6	6-206	SPEED SENSOR	1
10	6-207	WATER PRESSURE SENSOR	1
12	6-208	SENSOR	1
25	6-209	TEMP SENSOR	1
Contact Winco service for full engine parts support.			

# Hardware Kit



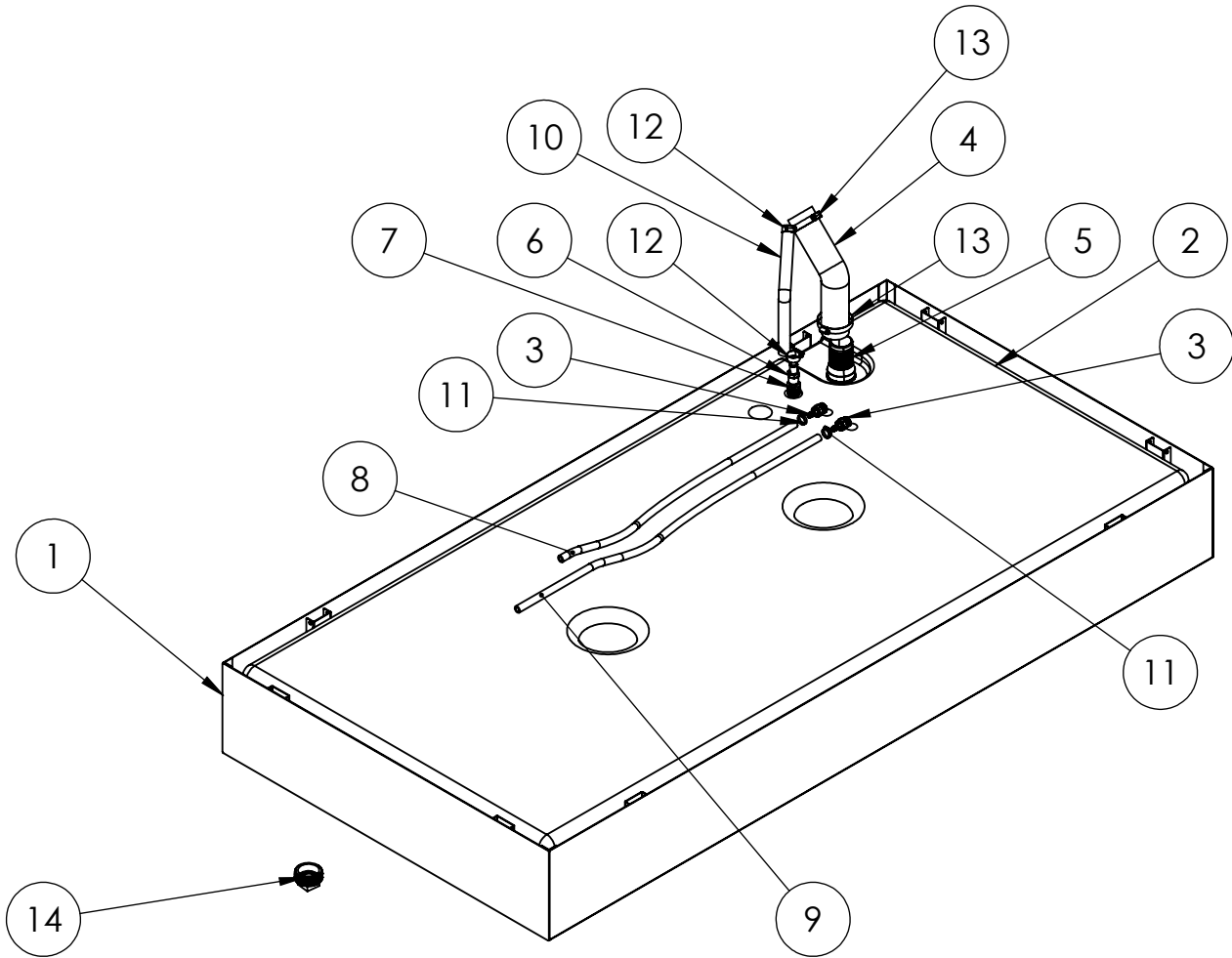
## Hardware Kit Continued

ITEM NO.	PART NUMBER	DESCRIPTION	QTY.
1	98956-001	SHOCKMOUNT 40 DURO (GREEN DOT)	4
2	21867-000	FLAT WASHER	4
3	636-000	LOCKWASHER 1/2 SPLIT	4
4	57580-000	HHCS 1/2-13 X 1.5 GR5	4
5	1744-000	NUT HEX 1/2-13	4
6	21867-001	FLAT WASHER .51 X .88 X .05	8
7	16248-001	.5-13 FLANGE NUT	8
8	97436-010	M10 LOCKWASHER	12
9	96003-030	M10-1.5X30MMM	8
10	96003-040	HHCS M10-1.5X 40MM BLACK	4
11	481-001	LOCKWASHER 3/8 SPLIT BLACK	8
12	350253-2	.375-24X1 HHB BLACK	8
13	806050-003	BLOCK HEATER BRACKET	1
14	92382-000	HOSE FIT.ELBOW .375NPT X .625 HOSE	1
15	300349-9	ADAPTER M18X1.5(M) X 3/8-18NPT (F)	2
16	92388-000	HOSE FIT .375NPT X .625 HOSE	1
17	81018-005	HOSE CLAMP 1.0625-.500	4
18	98906-018	OIL DRAIN VALVE M22 X 5/8 90HB	1
19	56107-003	RED HOSE 5/8ID RUBR.24IN	1
20	56107-014	RED HOSE 5/8ID RUBR.15IN	1
21	803050-006	BLACK BOX BRACKET	1
22	22627-000	3/4 NPT CONDUIT NUT	1
23	93073-031	CORD GRIP .75 NPT	1
24	803050-005	BLACK BOX COVER	1
25	21698-001	TORX PAN HEAD SCREW #10	2
26	94980-003	THREAD STUD .25-20 X .750	4
27	47517-000	.25-20 NYLOCK	5
28	407050-002	INTAKE PIPE BRACKET	1
29	407050-001	INTAKE PIPE	1
30	352104-7	2.5" SILICONE INTAKE COUPLER	1
31	81018-002	HOSE CLAMP 3-2.0625	2
32	701060-011	REAR FRAME COVER	1
33	65005-001	5/16 WASHER SS	4
34	65001-001	SS HHCS 5/16-18 X .75	4
35	47136-000	HEX NUT .3125-18 NYLOK	9
36	701060-012	TANK STOP	1
37	467-000	HHCS 5/16-18X.75	3
38	526-000	5/16 FLAT WASHER	5
39	65000-001	.25-20X.75 SS HHCS	17
40	65005-000	.25 WASHER SS	17
41	65003-000	SS LOCK WASHER ID.25 OD.475 TH.07	17
42	94304-001	THREAD STUD .3125-18X1	3
43	93621-004	OVAL TAIL LIGHT	2

## Hardware Kit Continued

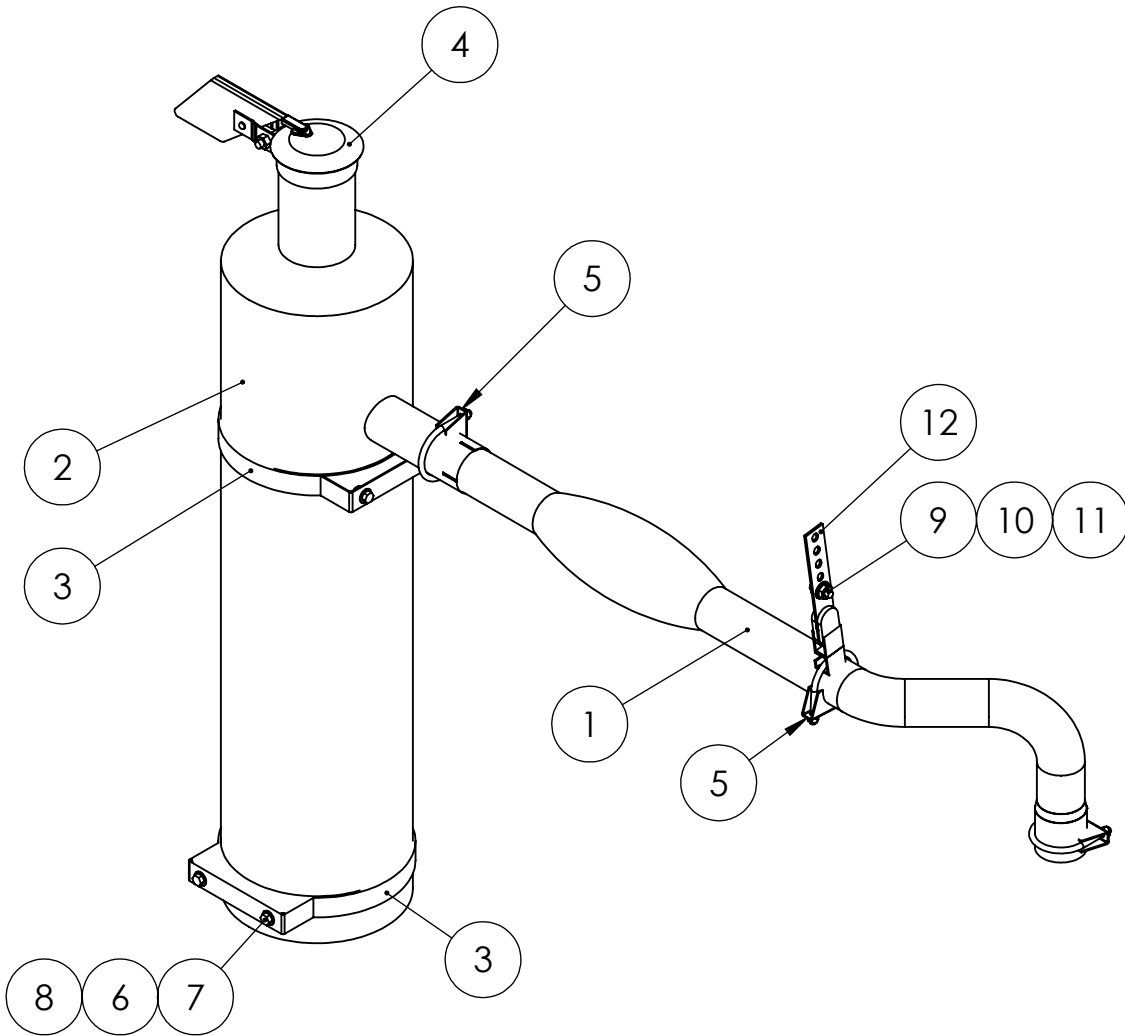
ITEM NO.	PART NUMBER	DESCRIPTION	QTY.
44	93621-005	TAIL LIGHT GROMMET	2
45	466-000	.25-20X.75 HHB	1
46	16248-000	.25-20 FLANGE NUT	8
47	71605-003	SHOCKMOUNT, BLACK, 30-35 DURO	4
48	81018-010	HOSE CLAMP 3.5625" TO 4.5"	1
49	96187-001	OIL DRAIN GASKET M14 ID	2
50	300349-1	OIL DRAIN ADAPTER	2
51	99875-000	ELBOW-STREET 3/8NPT 90DEG BRASS	2
52	94319-007	HOSE FIT. .375-18NPT X .375 HOSE BARB	2
53	81018-006	HOSE CLAMP 7/8 TO 3/8 X 1/2 WIDE	2
54	59944-016	RELAY 12VDC 30AMP SPDT	1
55	93341-008	LOCKWASHER M8	1
56	94442-003	NUT HEX M8-1.25 ZINC	2
57	64841-001	M6-1.0 FLANGE NUT ZINC	1
58	64841-000	NUT HEX M5-0.8 FLANGE LOCK ZINC	1
59	92388-001	HOSE FIT 1/2 NPT X 5/8 HOSE	1
60	94319-008	HOSE FIT. .500-14NPT X .375 HOSE BARB	1
61	98906-006	OIL DRAIN VALVE 1/2-20 X 3/8 F-101N	1
62	40730-000	GROMMET .5ID X .8125	1
63	80781-018	BLOCK HEATER WITH THERMOSTAT ASSY	1
64	16249-000	.3125-18 FLANGE	4
65	1000-0187	40 DURO SHOCKMOUNT SPACER	4
66	1516-000	.5-13X1.25 HHB	8
67	93084-000	PIPE PLUG .50 GALV	4
68	93621-008	2.5 IN ROUND MARKER LIGHT GROMMET	4
69	93621-015	2.5IN RED MARKER LIGHT LED	2
70	93621-016	2.5IN AMBER MARKER LIGHT LED	2
71	55505-005	HOSE 3/8 RUBBER 16 IN LONG	1
72	1000-0577	FPT F5C F34 LOOSE PARTS KIT	1
73	99267-003	OIL PRESSURE SENDER	1
74	300349-17	OIL DRAIN ADAPTER	1
75	93542-018	LEAD WIRE ASSY	1
76	93542-013	LEAD WIRE ASSY	1
77	62173-001	SELF TAP.SC. 5/16-18X.75	2
78	55224-000	LOCK WASHER 5/16 EXTERNAL TOOTH	3
79	94270-020	HHCS M12-175X 20MM	1
80	20039-000	LOCKWASHER 1/2 EXTERNAL TOOTH	1
81	580-000	5/16-18X1.25	3

# Fuel System



ITEM NO.	PART NUMBER	DESCRIPTION	QTY.
1	704060-002	CONTAINMENT TANK	1
2	350041-128	95 GALLON FUEL TANK	1
3	94319-008	HOSE FIT. .500-14NPT X .375 HOSE BARB	2
4	49409-018	2" FUEL HOSE 45° ELBOW	1
5	94319-012	2" NPT X 2" HOSE, BARBED, ZINC	1
6	92388-001	HOSE FIT 1/2 NPT X 5/8 HOSE	1
7	81075-000	HEX REDU.BUSH. 3/4X1/2	1
8	55505-017	HOSE 3/8 RUBBER 34 IN LONG	1
9	55505-029	HOSE 3/8 RUBBER 46 IN LONG	1
10	93689-001	HOSE, 0.625 ID, 16 IN. LONG	1
11	81018-008	HOSE CLAMP .875-.25	2
12	81018-005	HOSE CLAMP 1.0625-.500	2
13	81018-002	HOSE CLAMP 3-2.0625	2
14	21412-001	PIPE PLUG 2IN SQUARE HEAD	1

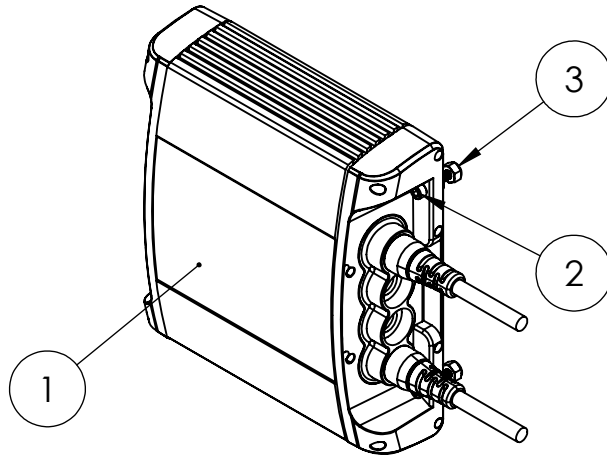
# Exhaust System



ITEM NO.	PART NUMBER	DESCRIPTION	QTY.
1	807060-001	TAIL PIPE, RP50	1
2	807060-002	BELMAR SILENCER, HOSPITAL GRADE, RP50	1
3	350264-1	MOUNTING BAND	2
4	53111-013	4" RAIN CAP	1
5	93489-002	MUFFLER CLAMP 2.5"	3
6	65005-002	.375 FLATWASHER SS	4
7	65002-000	.375-16X.75 HHB SS	4
8	16250-000	.375-16 FLANGE NUT	4
9	91658-001	HHCS 3/8-16X1	1
10	526-000	WASHER ID .375 OD .890	1
11	16250-000	.375-16 FLANGE NUT	1
12	1000-0398	SWINGER HANGER	1

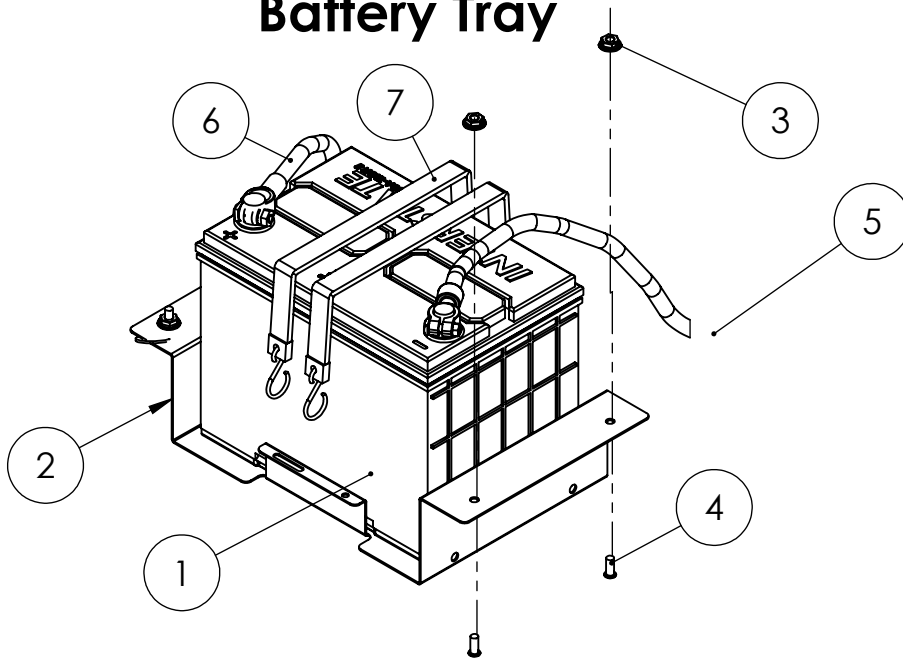


# Battery Charger



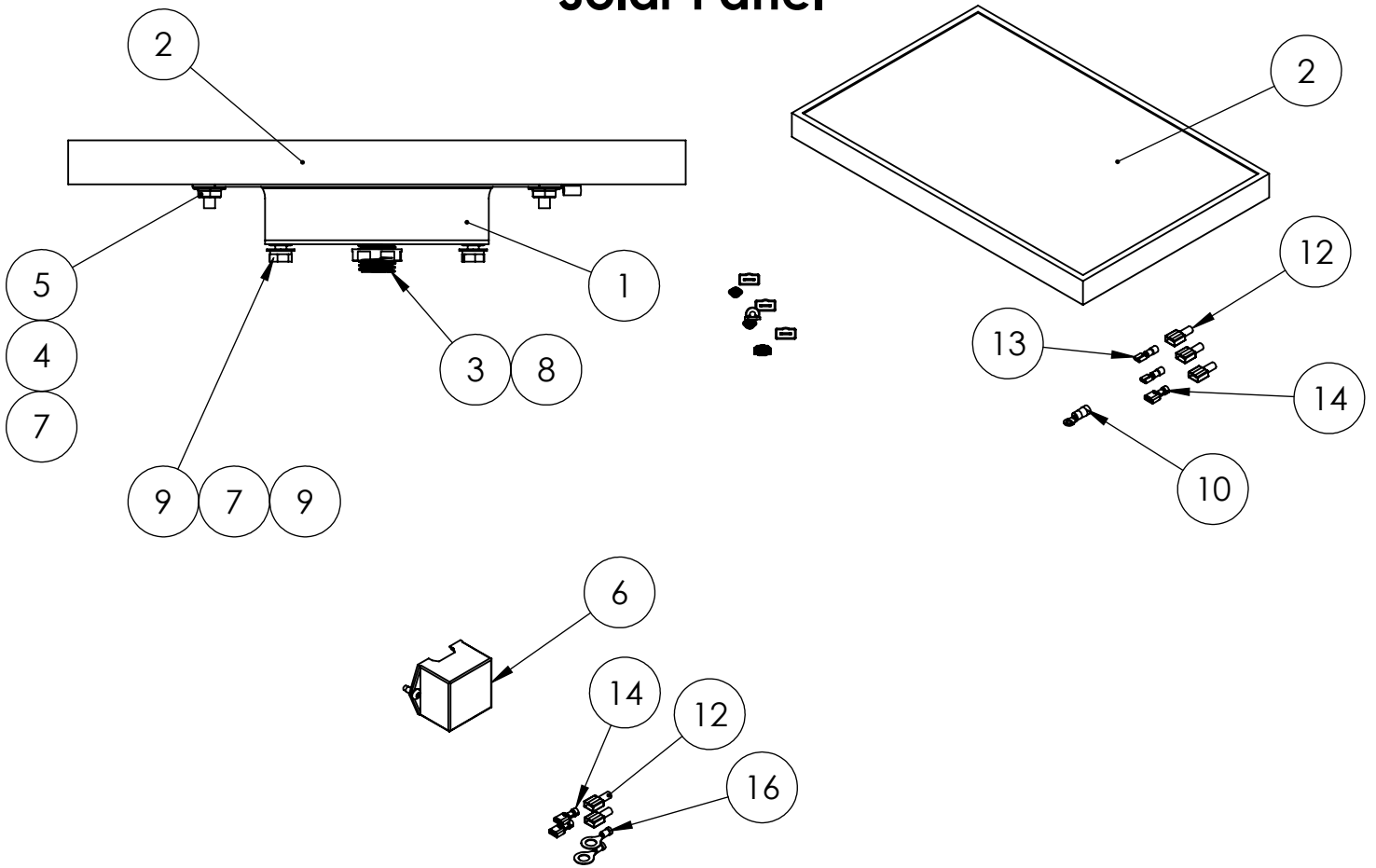
ITEM NO.	PART NUMBER	DESCRIPTION	QTY.
1	72036-023	BATTERY CHARGER, 120VAC/12VDC, 5.0 AMP, GUEST MODEL 2708A	1
2	64872-001	SOC.HCS 10-24 X 1 BLK	4
3	5315-000	NUT HEX 10-24 NYLON	4

# Battery Tray



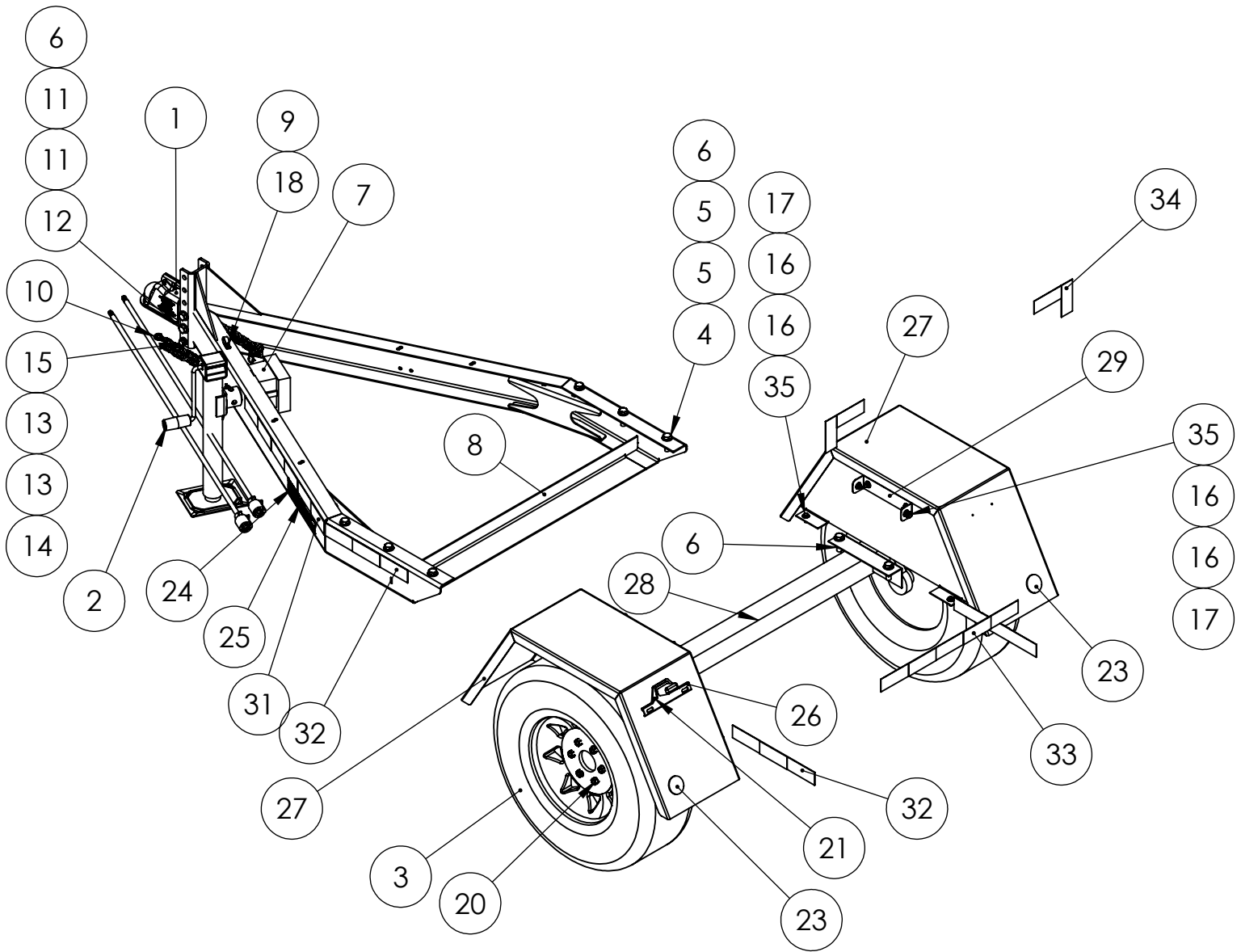
ITEM NO.	PART NUMBER	DESCRIPTION	QTY.
1	80765-010	BATTERY 12V 650CCA GROUP 24	1
2	705060-001	BATTERY TRAY	1
3	16248-000	.25-20 FLANGE NUT	4
4	94980-001	THREAD STUD .25-20X.625	4
5	53220-038	BATTERY CABLE ASSY	1
6	53220-080	BATTERY CABLE ASSY	1
7	16329-001	RUBBER STRAP, BATTERY HOLD DOWN	2

# Solar Panel



ITEM NO.	PART NUMBER	DESCRIPTION	QTY.
1	405020-009	SOLAR PANEL BRACKET	1
2	300539-5	SOLARTECH SOLAR PANEL 5W	1
3	93073-030	CORD GRIP .5NPT	1
4	65000-000	.25-20X.625 SS HHCS	4
5	65006-000	.25-20 FLANGE NUT SS	4
6	300539-3	SOLAR CHARGER CONTROLLER	1
7	65005-000	.25 WASHER SS	8
8	22627-001	LOCKNUT 1/2 NPT	1
9	65000-001	.25-20X.75 SS HHCS	4
10	4158-000	TERMINAL RING 16-14 AWG #10	1
11	4160-000	TERMINAL, RING, 16-14AWG, 1/4 STUD	1
12	48602-004	TERMINAL MALE 16-14 AWG .250 TAB	5
13	81964-000	TERMINAL FEMALE 22-18 GA .250	2
14	48602-003	TERMINAL FEMALE 16-14 AWG .250 TAB	3
15	21698-001	TORX PAN HEAD SCREW #10	2
16	7547-000	TERMINAL RING 16/14AWG .375 STUD	2
17	65003-000	SS LOCK WASHER ID.25 OD.475 TH.07	4
18	62487-005	SPLIT LOOM (0.350 ID, 0.510 OD) PER FOOT	10

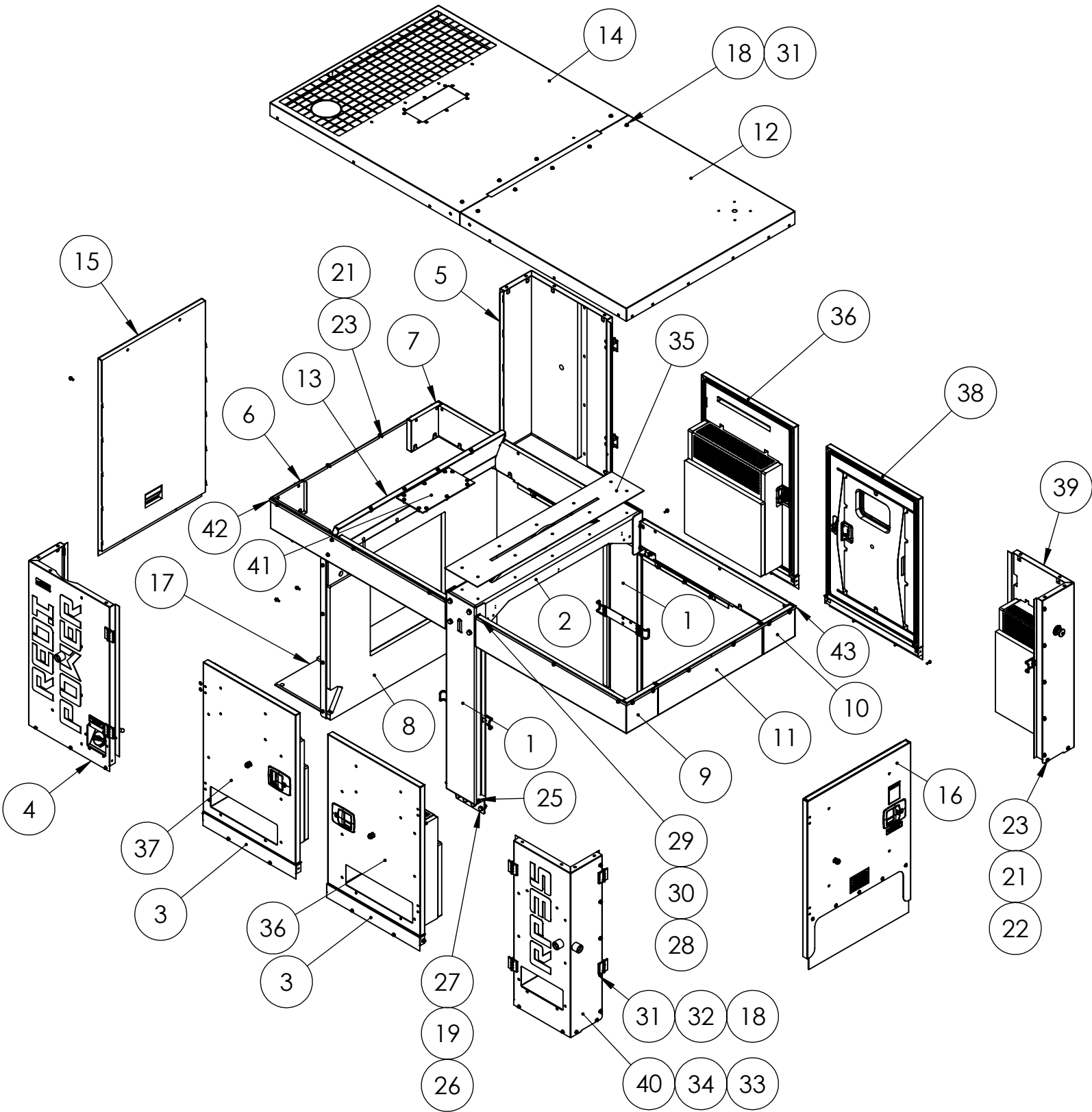
# Trailer



## Trailer Continued

ITEM NO.	PART NUMBER	DESCRIPTION	QTY.
1	99415-006	2 IN BALL COUPLER CHANNEL MOUNT	1
2	93180-006	5K PIPE MOUNT SIDE WIND 15 IN LIFT	1
3	97105-002	15 IN 6X5.5 WHEEL HUBTIRE AND WHEEL ASSEMBLY	2
4	91083-004	.625-11X2 HHCS GR5	10
5	1305	WASHER 5/8 SAE	20
6	95468-000	.625-11 NYLOCK	12
7	760060-018	RP50 TRAILER TONGUE HARNESS	1
8	760060-001	TONGUE WELDMENT	1
9	97391-003	TUBE CLAMP/CUSH.WIRE 15/16	5
10	352024-2	SAFETY CHAIN	2
11	516-000	FLAT WASHER 5/8 I.D. 1.31 O.D. STEEL ZINC	4
12	93680-004	HHCS 5/8-11 X 5 GR8	2
13	8472-000	FLAT WASHER .438 ID X 1.00 X .083	6
14	95468-001	NUT HEX 7/16/-14 NYLOCK	2
15	93617-005	HHCS 7/16-14X1.5	2
16	526-000	5/16 FLAT WASHER	24
17	47136-000	HEX NUT .3125-18 NYLOK	12
18	352120-2	1/4-20 X .75 FHCS	5
19	47517-000	.25-20 NYLOCK	5
20	252003060	LUG NUT 1/2-20 HEX	12
21	21698-001	TORX PAN HEAD SCREW #10	2
22	93621-012	REFLECTOR AMBER	2
23	93621-013	REFLECTOR RED	2
24	15209-021	DECAL TRAILER TIRE PLACECARD	1
25	15209-005	DECAL TRAILER CERTIFICATION	1
26	95709-000	LICENSE LIGHT W/ BRACKET	1
27	760060-006	WELDED FENDER	2
28	97104-011	5000 LB AXLE WITH BRAKES	1
29	760060-005	FENDER BRACKET	2
30	352309-1	KEY RING WITH CARABINER	1
31	80733-004	TAPE D.O.T. REFLECTIVE, 30IN	2
32	80733-004	TAPE D.O.T. REFLECTIVE, 15IN	4
33	80733-004	TAPE D.O.T. REFLECTIVE, 25IN	1
34	80733-004	TAPE D.O.T. REFLECTIVE, 5IN WHITE ONLY	4
35	1116-000	HHCS .3125-18X1	10

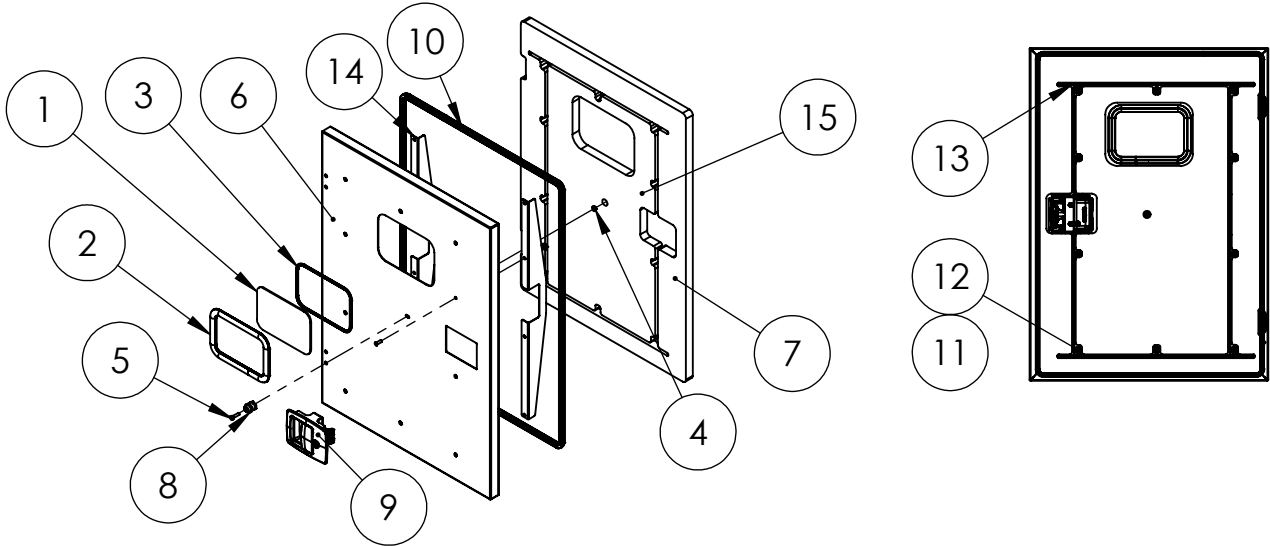
# Housing



## Housing Continued

ITEM NO.	PART NUMBER	DESCRIPTION	QTY.
1	775060-016	MULLION	2
2	775060-017	LIFTING BAR	1
3	775060-004	BOTTOM SILL	4
4	775060-003	FRONT LEFT CORNER	1
5	1000-1715	FRONT RIGHT CORNER	1
6	775060-029	FRONT LEFT SIDE SILL	1
7	775060-028	FRONT RIGHT SIDE SILL	1
8	1000-0630	RAD PANEL	1
9	775060-027	LEFT REAR SIDE SILL	1
10	775060-026	RIGHT REAR SIDE SILL	1
11	775060-025	REAR SILL	1
12	775060-023	REAR ROOF	1
13	775060-021	RAD EXHAUST BAFFLE	1
14	775060-024	FRONT ROOF	1
15	775060-002	FRONT PANEL	1
16	1000-1721	REAR DOOR	1
17	775060-022	LOWER RAD EXHAUST BAFFLE	1
18	65001-002	.3125-18X1 HHB SS	20
19	21867-001	FLAT WASHER .51 X .88 X .05	32
20	16248-001	.5-13 FLANGE NUT	6
21	65005-000	.25 WASHER SS	67
22	65003-000	SS LOCK WASHER ID.25 OD.475 TH.07	69
23	65000-001	.25-20X.75 SS HHCS	69
24	16248-000	.25-20 FLANGE NUT	14
25	352120-2	1/4-20 X .75 FHCS	17
26	92242-000	NUT HEX .500-13 NYLOCK	12
27	1516-000	.5-13X1.25 HHB	20
28	16249-000	.3125-18 FLANGE	18
29	1116-000	HHCS .3125-18X1	8
30	526-000	5/16 FLAT WASHER	8
31	65005-001	5/16 WASHER SS	20
32	65003-001	LOCKWASHER 5/16 SPLIT SS	10
33	63841-008	M8 X 16MM FLAT WASHER	12
34	16446-000	M8-1.25 NYLOCK	12
35	775060-036	ROOF GASKET	1
36	775060-005	DOOR RIGHT OPENING	2
37	775060-007	LEFT OPENING DOOR	1
38	1000-1717	CONTROLLER DOOR	1
39	2000-0243	RIGHT REAR CORNER	1
40	2000-0242	LEFT REAR CORNER	1
41	1000-0418	RADIATOR FILL ACCESS PANEL	1
42	62912-000	FOAM STRIP .5 WIDE .125 THK 132 INCH LONG	1
43	62912-000	FOAM STRIP .5 WIDE .125 THK 115 INCH LONG	1
44	1000-1404	LED LIGHTING HARNESS	1

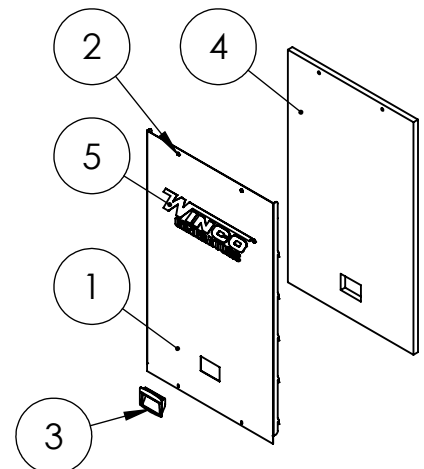
# Controller Door Assembly



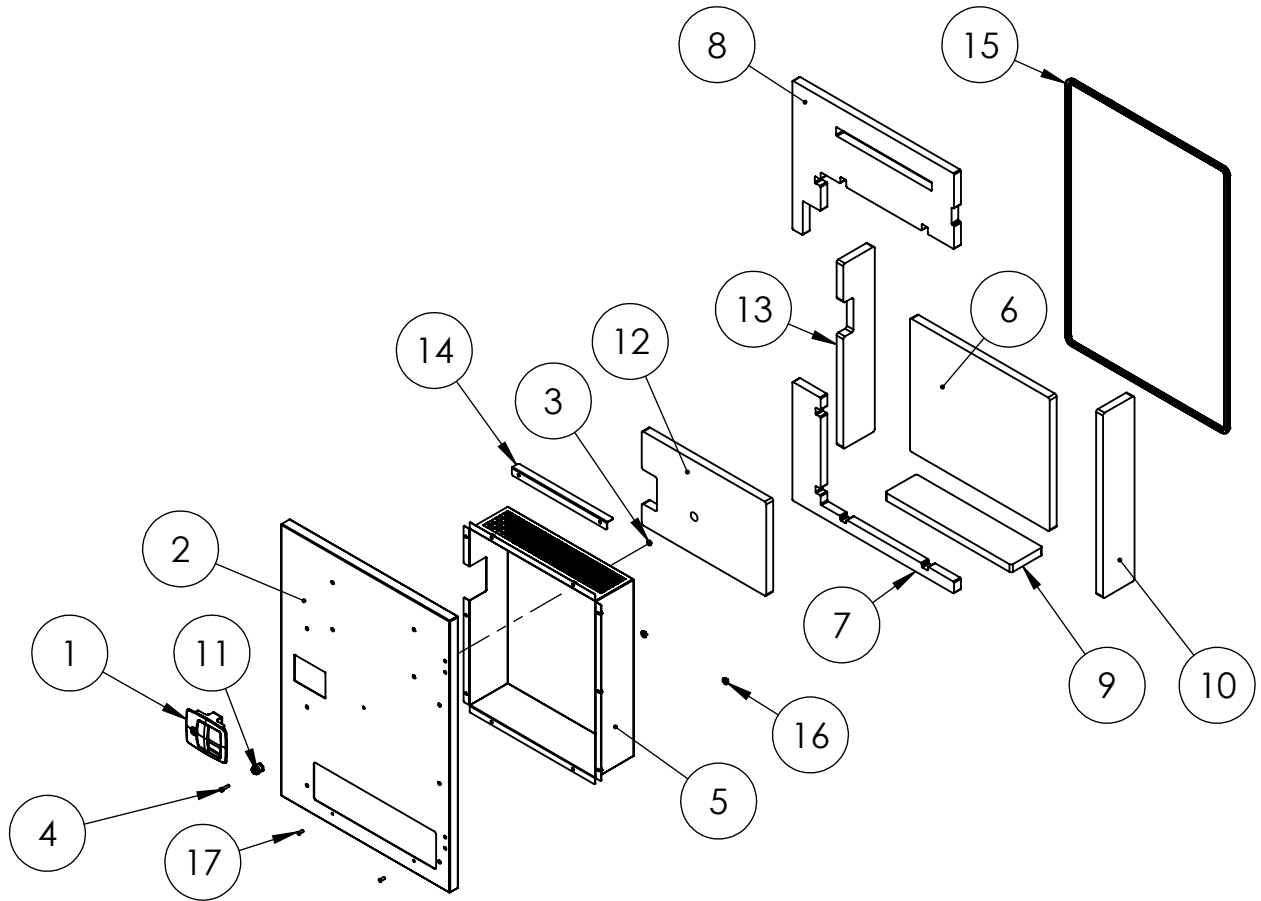
ITEM NO.	PART NUMBER	DESCRIPTION	QTY.
1	351556-1	WINDOW PANEL	1
2	351597	WEATHER STRIP WINDOW SEAL	1
3	351597-1	WEATHER SEAL LOCKING STRIP	1
4	64841-001	M6-1.0 FLANGE NUT ZINC	1
5	75139-025	HHCS M6-1X25MM STAINLESS STEEL	1
6	1000-1717	CONTROLLER DOOR	1
7	2000-0247	OUTER PERIMETER FOAM	1
8	95232-001	DOOR HOLDER MALE	1
9	99269-002	DOOR LATCH LOCKABLE	1
10	16348-001	AIR SEAL 114.50"	1
11	16248-000	.25-20 FLANGE NUT	10
12	94980-003	THREAD STUD .25-20 X .750	10
13	1000-1709	DOOR BRACE	2
14	2000-0244	DOOR BRACE	2
15	2000-0245	CONTROLLER DOOR INNER FOAM	1

## Front Panel

ITEM NO.	PART NUMBER	DESCRIPTION	QTY.
1	775060-002	FRONT PANEL	1
2	352125-1	1/4-20 RIVET NUT 22 GA-10GA	2
3	300223-2	HANDLE, FLUSH PULL	1
4	792060-004	FRONT PANEL FOAM	1
5	98313-002	WINCO LOGO BLUE	1



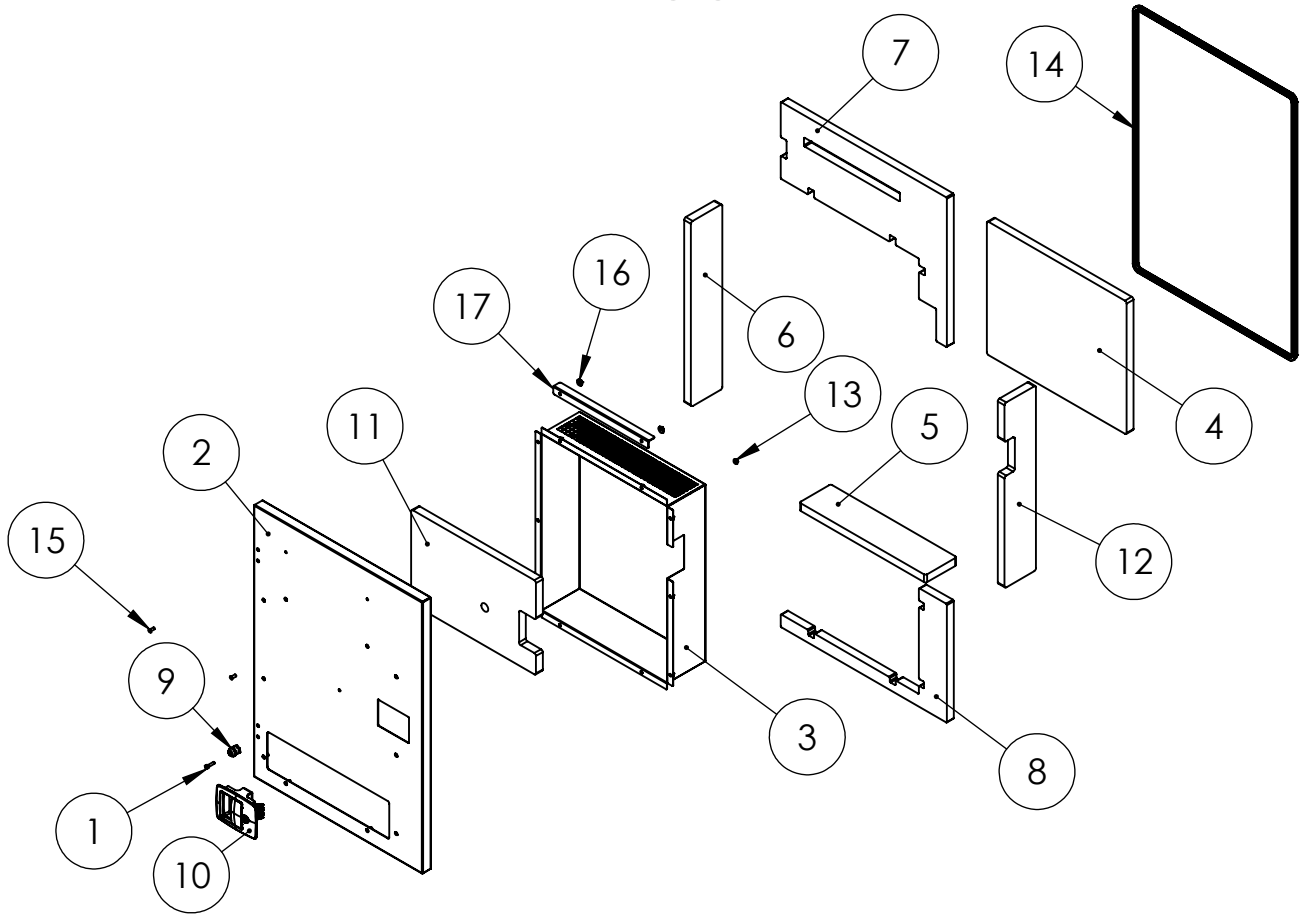
# RIGHT DOOR



ITEM NO.	PART NUMBER	DESCRIPTION	QTY.
1	99269-002	DOOR LATCH LOCKABLE	1
2	775060-005	DOOR RIGHT OPENING	1
3	64841-001	M6-1.0 FLANGE NUT ZINC	1
4	75139-025	HHCS M6-1X25MM STAINLESS STEEL	1
5	775060-006	DOOR BAFFLE RIGHT OPENING	1
6	792060-007	DOOR BAFFLE FRONT FOAM	1
7	792060-008	DOOR FOAM RIGHT OPENING BOTTOM	1
8	792060-009	DOOR FOAM TOP RIGHT OPENING	1
9	792060-010	DOOR BAFFLE FOAM TOP AND BOTTOM	1
10	792060-011	DOOR BAFFLE SIDE FOAM	1
11	95232-001	DOOR HOLDER MALE	1
12	792060-046	DOOR BAFFLE INSIDE FOAM RIGHT	1
13	792060-045	DOOR BAFFLE SIDE FOAM LATCH RIGHT	1
14	775060-035	DOOR BRACE	1
15	16348-001	AIR SEAL 114.50"	1
16	16248-000	.25-20 FLANGE NUT	12
17	94980-001	THREAD STUD .25-20X.625	12

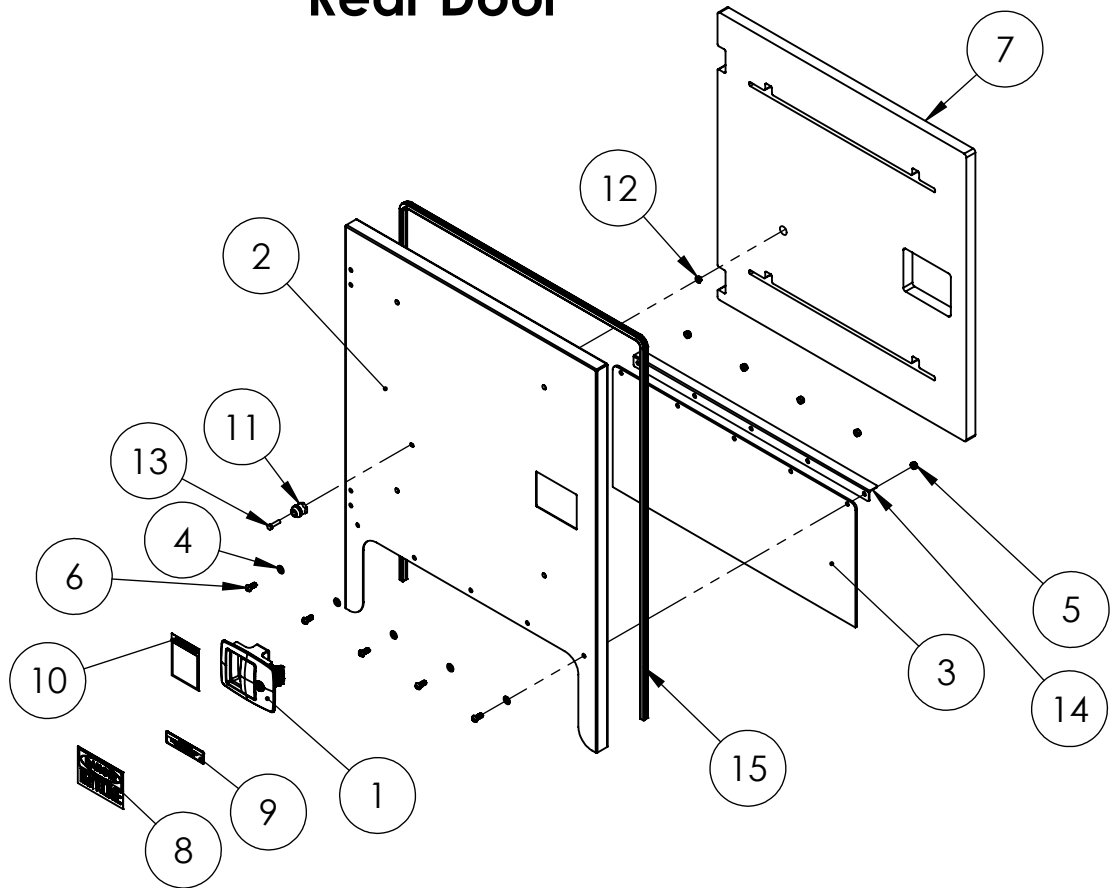


# LEFT DOOR



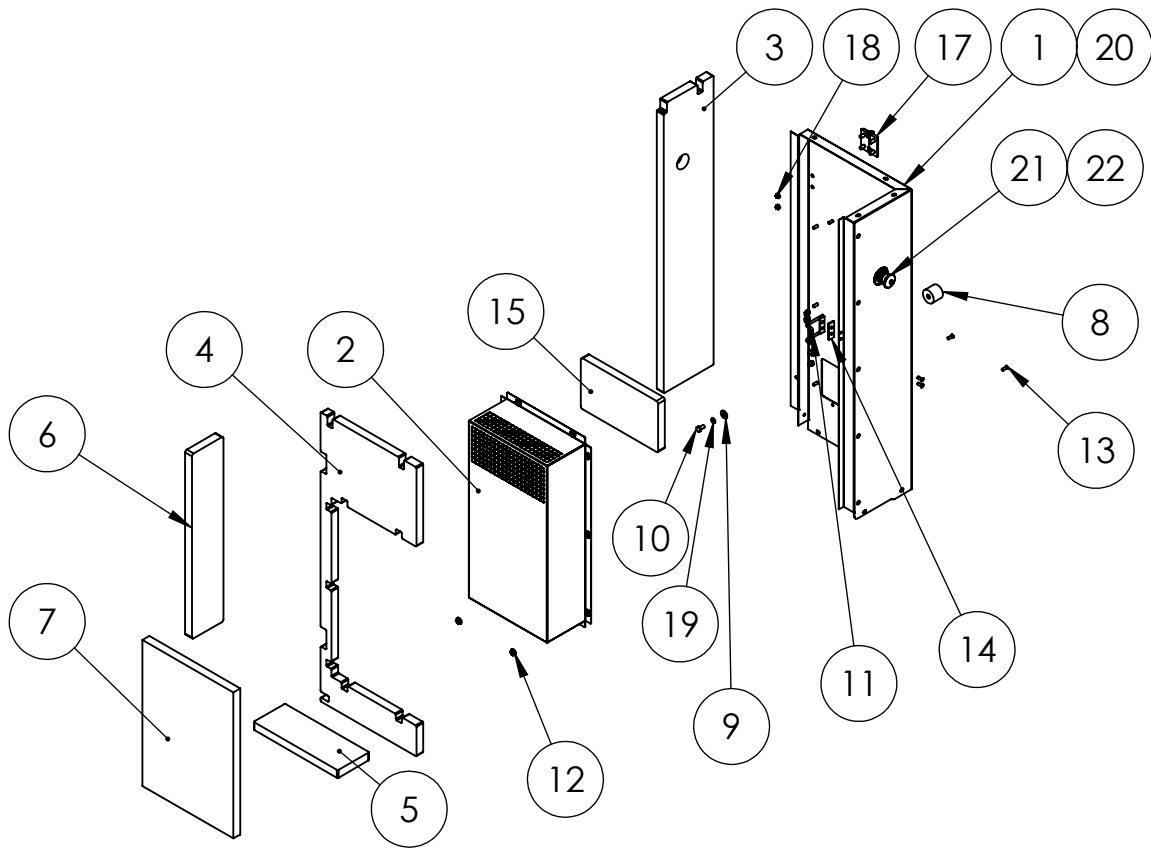
ITEM NO.	PART NUMBER	DESCRIPTION	QTY.
1	75139-025	HHCS M6-1X25MM STAINLESS STEEL	1
2	775060-007	LEFT OPENING DOOR	1
3	775060-008	LEFT OPENING DOOR BAFFLE	1
4	792060-007	DOOR BAFFLE FRONT FOAM	1
5	792060-010	DOOR BAFFLE FOAM TOP AND BOTTOM	1
6	792060-011	DOOR BAFFLE SIDE FOAM	1
7	792060-012	LEFT OPENING DOOR TOP FOAM	1
8	792060-013	LEFT OPENING DOOR FOAM BOTTOM	1
9	95232-001	DOOR HOLDER MALE	1
10	99269-002	DOOR LATCH LOCKABLE	1
11	792060-043	DOOR BAFFLE FRONT FOAM	1
12	792060-044	DOOR BAFFLE SIDE FOAM LATCH LEFT	1
13	64841-001	M6-1.0 FLANGE NUT ZINC	1
14	16348-001	AIR SEAL 114.50"	1
15	94980-001	THREAD STUD .25-20X.625	12
16	16248-000	.25-20 FLANGE NUT	12
17	775060-035	DOOR BRACE	1

# Rear Door



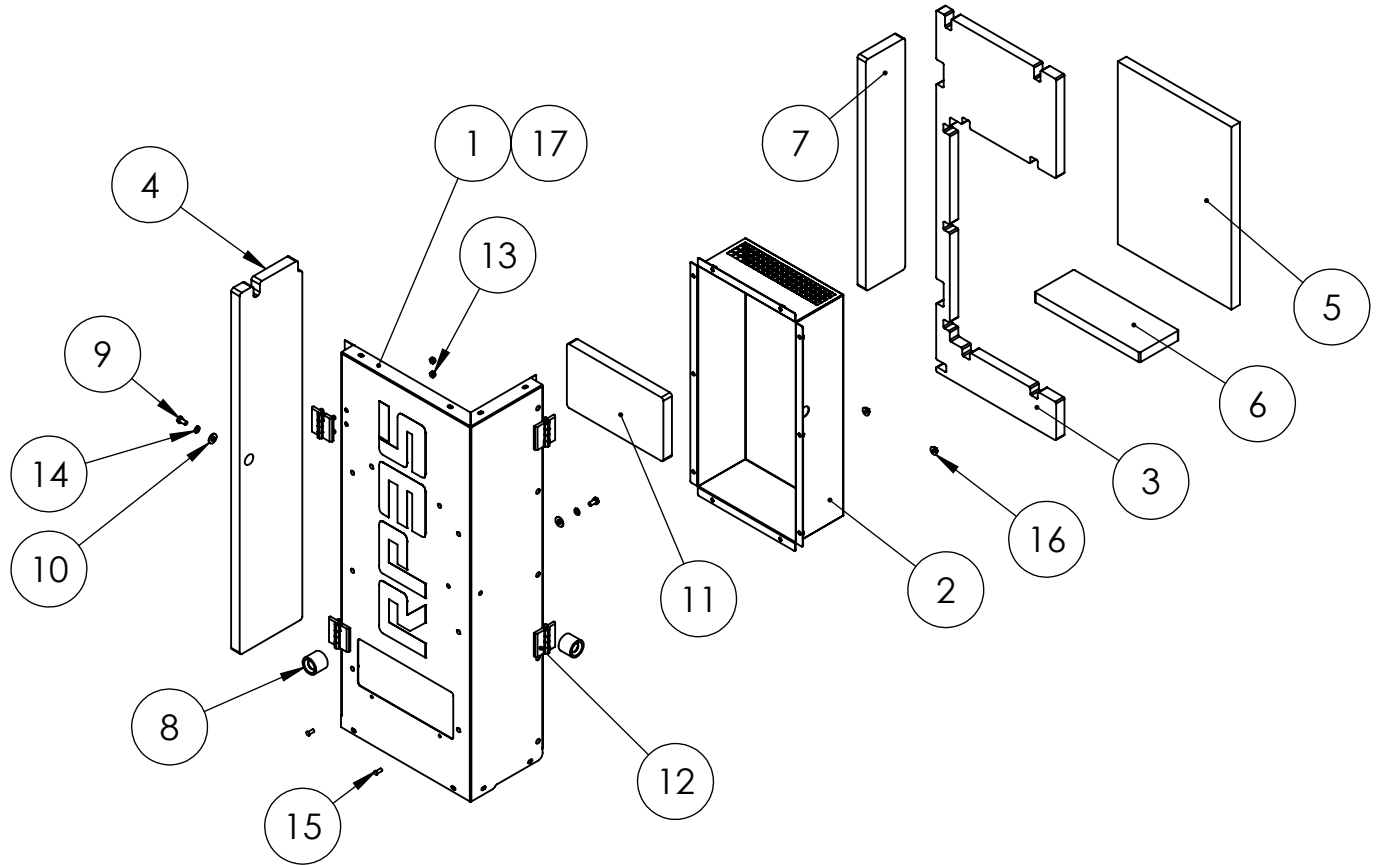
ITEM NO.	PART NUMBER	DESCRIPTION	QTY.
1	99269-002	DOOR LATCH LOCKABLE	1
2	1000-1721	REAR DOOR	1
3	775060-014	REAR DOOR FLAP	1
4	65005-001	5/16 WASHER SS	5
5	47136-000	HEX NUT .3125-18 NYLOK	5
6	64858-102	BHSCS .3125-18 X 0.75 BUTTON HEAD SOCKET CAP SCREW SS	5
7	1000-1722	REAR DOOR FOAM	1
8	91498-000	DECAL-DANGER HIGH VOLTAGE 3.5x5	1
9	99951-000	DECAL KEEP DOORS LOCKED	1
10	97813-000	DECAL-WARNING CYCLE CRANK	1
11	95232-001	DOOR HOLDER MALE	1
12	64841-001	M6-1.0 FLANGE NUT ZINC	1
13	75139-025	HHCS M6-1X25MM STAINLESS STEEL	1
14	775060-031	REAR DOOR STIFFENER	1
15	16348-002	AIR SEAL 97.75	1
16	1000-1709	DOOR BRACE	2
17	94980-003	THREAD STUD .25-20 X .750	4
18	16248-000	.25-20 FLANGE NUT	4

# Right Rear Corner



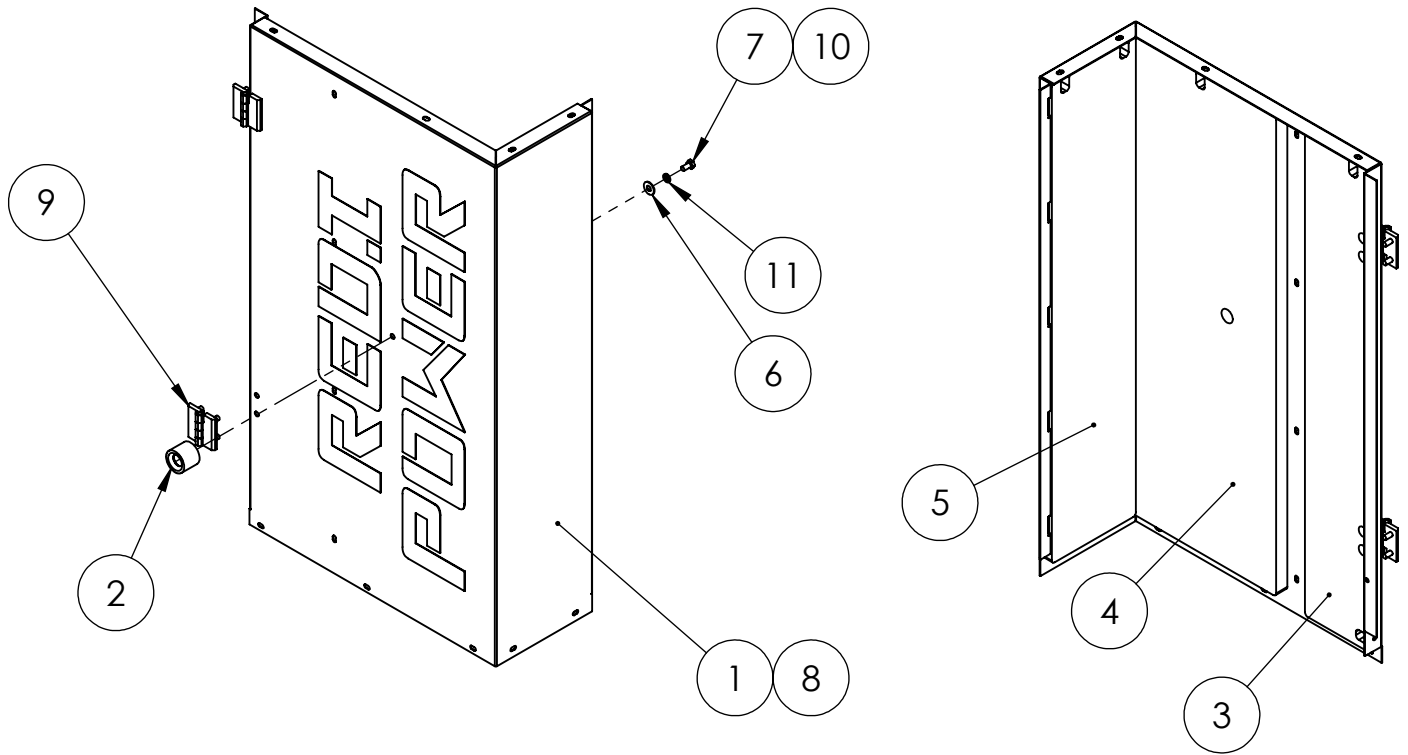
ITEM NO.	PART NUMBER	DESCRIPTION	QTY.
1	775060-010	RIGHT REAR CORNER	1
2	775060-011	CORNER BAFFLE	1
3	792060-015	REAR CORNER FOAM	1
4	792060-016	REAR CORNER SIDE FOAM	1
5	792060-017	CORNER BAFFLE TOP AND BOTTOM FOAM	1
6	792060-011	DOOR BAFFLE SIDE FOAM	1
7	792060-018	CORNER BAFFLE FRONT FOAM	1
8	95232-000	DOOR HOLDER FEMALE	1
9	526-000	WASHER ID .375 OD .890	1
10	57493-016	M8-1.25X16MM ZINC	1
11	99269-003	STRIKER (FOR -002 LATCH)	1
12	16248-000	.25-20 FLANGE NUT	12
13	94980-001	THREAD STUD .25-20X.625	12
14	775060-012	STRIKER SPACER	1
15	792060-047	CORNER BAFFLE INSIDE FOAM	1
16	63941-020	E-STOP DECAL	1
17	350054-5	HINGE BLACK	2
18	16446-000	M8-1.25 NYLOCK	4
19	93341-008	LOCKWASHER M8	1
20	1000-0626	RP35 DECAL	1
21	99783-001	SWITCH PUSH PULL	1
22	99783-002	SWITCH CONTACT	1
23	775060-038	E-STOP HARNESS	1

# Left Rear Corner



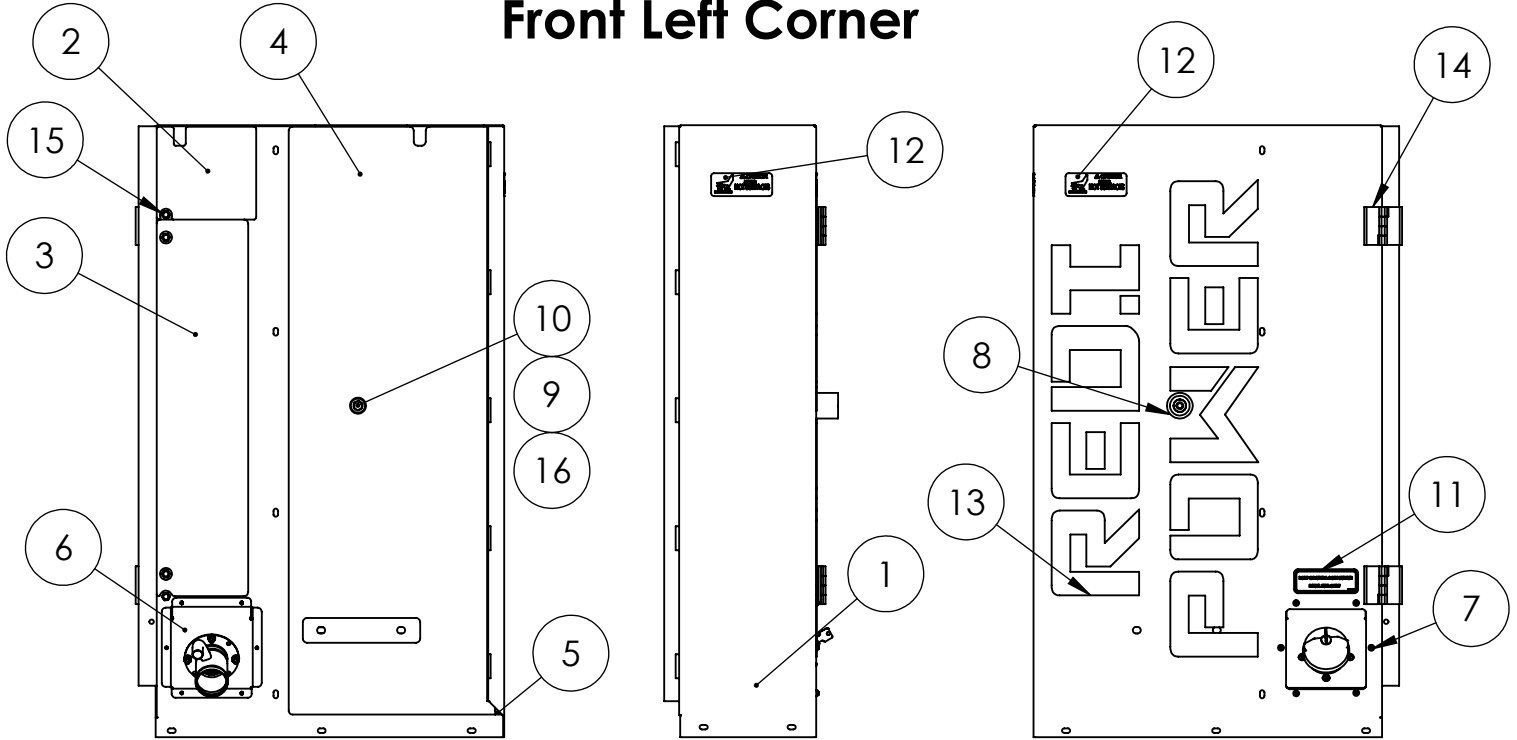
ITEM NO.	PART NUMBER	DESCRIPTION	QTY.
1	775060-015	LEFT REAR CORNER	1
2	775060-011	CORNER BAFFLE	1
3	792060-020	LEFT REAR CORNER SIDE FOAM	1
4	792060-021	LEFT REAR CORNER REAR FOAM	1
5	792060-018	CORNER BAFFLE FRONT FOAM	1
6	792060-017	CORNER BAFFLE TOP AND BOTTOM FOAM	1
7	792060-011	DOOR BAFFLE SIDE FOAM	1
8	95232-000	DOOR HOLDER FEMALE	2
9	57493-016	M8-1.25X16MM ZINC	2
10	526-000	WASHER ID .375 OD .890	2
11	792060-047	CORNER BAFFLE INSIDE FOAM	1
12	350054-5	HINGE BLACK	4
13	16446-000	M8-1.25 NYLOCK	8
14	93341-008	LOCKWASHER M8	2
15	94980-001	THREAD STUD .25-20X.625	10
16	16248-000	.25-20 FLANGE NUT	10
17	1000-0626	RP35 DECAL	1

# Front Right Corner



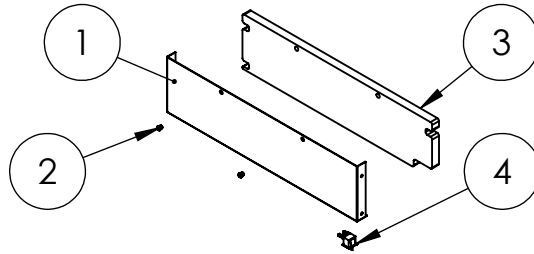
ITEM NO.	PART NUMBER	DESCRIPTION	QTY.
1	1000-1715	FRONT RIGHT CORNER	1
2	95232-000	DOOR HOLDER FEMALE	1
3	792060-001	FRONT RIGHT CORNER REAR FOAM	1
4	792060-002	FRONT RIGHT CORNER FRONT SIDE FOAM	1
5	792060-003	FRONT RIGHT CORNER FRONT FOAM	1
6	526-000	5/16 FLAT WASHER	1
7	57493-016	M8-1.25X16MM ZINC	1
8	64214-050	REDI POWER DECAL	1
9	350054-5	HINGE BLACK	2
10	16446-000	M8-1.25 NYLOCK	4
11	93341-008	LOCKWASHER M8	1

## Front Left Corner



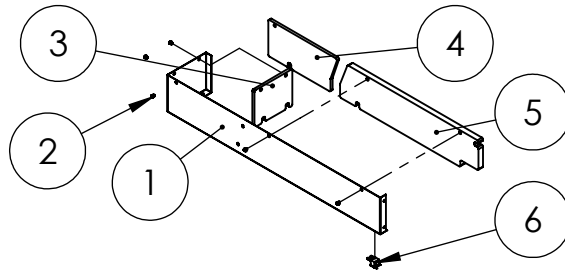
ITEM NO.	PART NUMBER	DESCRIPTION	QTY.
1	775060-003	FRONT LEFT CORNER	1
2	793060-000	FRONT LEFT, TOP REAR FOAM	1
3	792060-005	FRONT LEFT BOTTOM REAR FOAM	1
4	793060-001	FRONT LEFT CORNER, FORNT SIDE FOAM	1
5	793060-002	FRONT LEFT CORNER FRONT FOAM	1
6	704060-001	FUEL NECK BEZEL	1
7	21698-001	TORX PAN HEAD SCREW #10	6
8	95232-000	DOOR HOLDER FEMALE	1
9	526-000	5/16 FLAT WASHER	1
10	57493-016	M8-1.25X16MM ZINC	1
11	97381-001	DECAL-DIESEL FUEL ONLY	1
12	63941-001	DECAL - HOT SURFACES	2
13	64214-050	REDI POWER DECAL	1
14	350054-5	HINGE BLACK	2
15	16446-000	M8-1.25 NYLOCK	4
16	93341-008	LOCKWASHER M8	1
17	15482-006	FUEL CAP, 2-1/4 INCH, 2-WAY VENTED, GREEN, DIESEL, LOCKABLE	1
18	420-001	BZ RHMS 10-24X3/4 PHILLIPS	4
19	598-000	#10 WASHER	8
20	5315-000	NUT HEX 10-24 NYLON	4
21	15482-005	FUEL FILLER NECK, 8 BOLT, 2 INCH OD WITH 0.625 INCH VENT, DIESEL	1

## Rear Sill



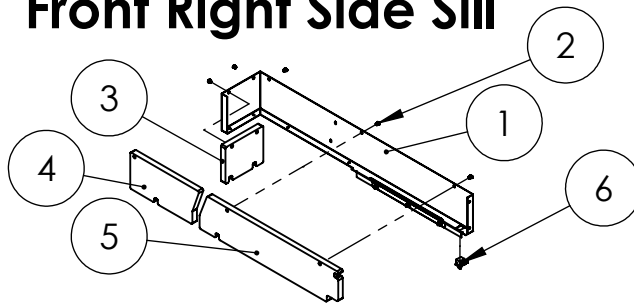
ITEM NO.	PART NUMBER	DESCRIPTION	QTY.
1	775060-025	REAR SILL	1
2	352125-1	1/4-20 RIVET NUT 22 GA-10GA	2
3	792060-034	REAR SILL FOAM	1
4	1000-1403	DOOR SWITCH ASSEMBLY	1

## Front Left Side Sill



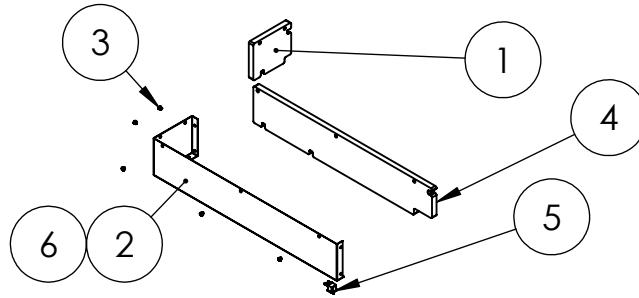
ITEM NO.	PART NUMBER	DESCRIPTION	QTY.
1	775060-029	FRONT LEFT SIDE SILL	1
2	352125-1	1/4-20 RIVET NUT 22 GA-10GA	5
3	793060-007	FRONT LEFT SIDE SILL FRONT FOAM	1
4	793060-006	FRONT LEFT SIDE SILL FRONT SIDE FOAM	1
5	792060-042	FRONT LEFT SIDE SILL REAR SIDE FOAM	1
6	1000-1403	DOOR SWITCH ASSEMBLY	1
7	1000-1402	DOOR LIGHT ASSEMBLY	1

## Front Right Side Sill



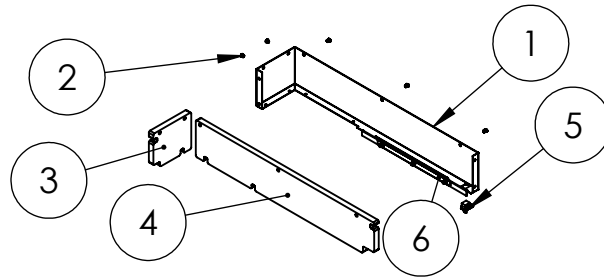
ITEM NO.	PART NUMBER	DESCRIPTION	QTY.
1	775060-028	FRONT RIGHT SIDE SILL	1
2	352125-1	1/4-20 RIVET NUT 22 GA-10GA	5
3	792060-039	FRONT RIGHT SIDE SILL FRONT FOAM	1
4	792060-040	FRONT RIGHT SIDE SILL FRONT SIDE FOAM	1
5	792060-041	FRONT RIGHT SIDE SILL REAR SIDE FOAM	1
6	1000-1403	DOOR SWITCH ASSEMBLY	1
7	1000-1402	DOOR LIGHT ASSEMBLY	1

## Right Rear Side Sill



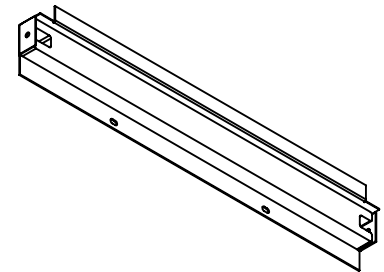
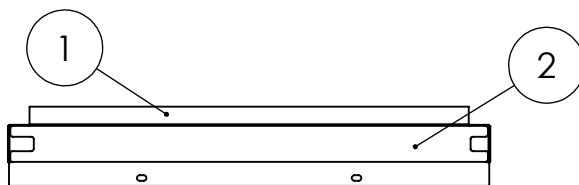
ITEM NO.	PART NUMBER	DESCRIPTION	QTY.
1	792060-036	RIGHT REAR SIDE SILL FOAM	1
2	775060-026	RIGHT REAR SIDE SILL	1
3	352125-1	1/4-20 RIVET NUT 22 GA-10GA	5
4	792060-035	RIGHT REAR SIDE SILL FOAM	1
5	1000-1403	DOOR SWITCH ASSEMBLY	1
6	1000-1402	DOOR LIGHT ASSEMBLY	1

## Left Rear Side Sill



ITEM NO.	PART NUMBER	DESCRIPTION	QTY.
1	775060-027	LEFT REAR SIDE SILL	1
2	352125-1	1/4-20 RIVET NUT 22 GA-10GA	5
3	792060-038	LEFT REAR SIDE SILL REAR FOAM	1
4	792060-037	LEFT REAR SIDE SILL SIDE FOAM	1
5	1000-1403	DOOR SWITCH ASSEMBLY	1
6	1000-1402	DOOR LIGHT ASSEMBLY	1

## Bottom Sill

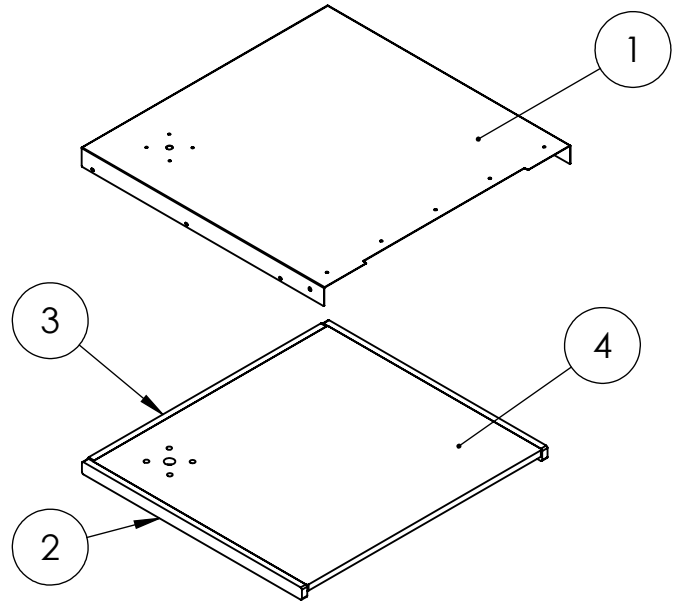


ITEM NO.	PART NUMBER	DESCRIPTION	QTY.
1	775060-004	BOTTOM SILL	1
2	792060-006	BOTTOM SILL FOAM	1

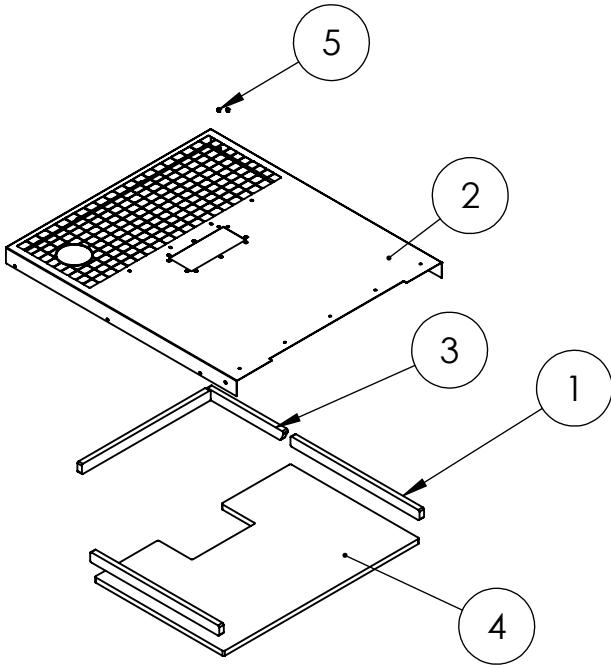


## Rear Roof

ITEM NO.	PART NUMBER	DESCRIPTION	QTY.
1	775060-023	REAR ROOF	1
2	792060-027	REAR ROOF FOAM	2
3	792060-028	REAR ROOF END FOAM	1
4	792060-029	REAR ROOF BOTTOM FOAM	1

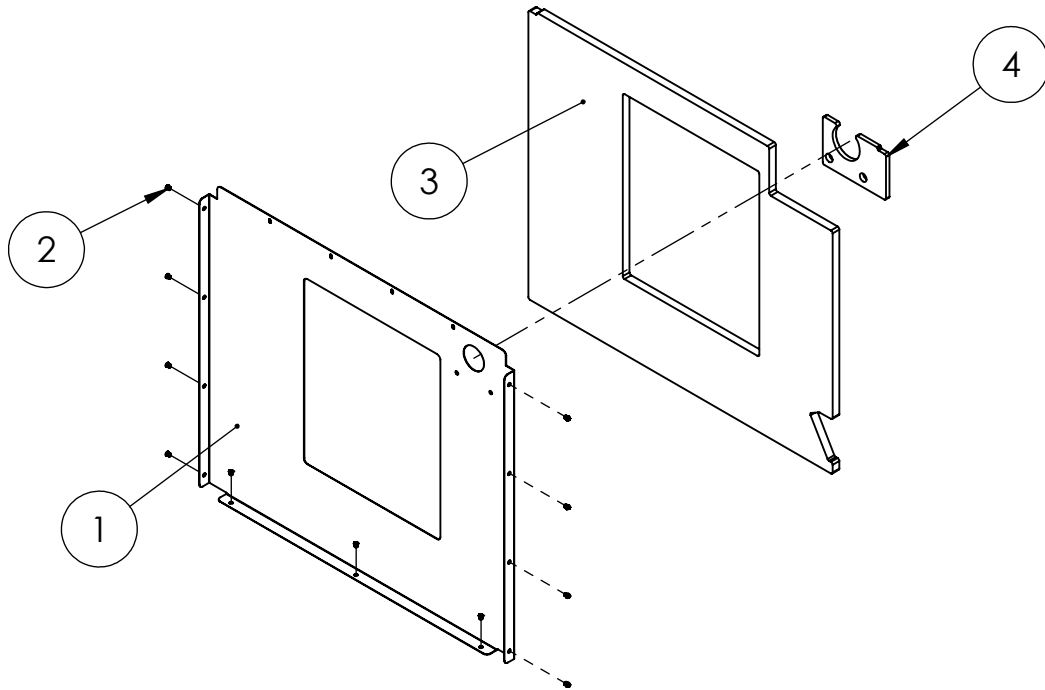


## Front Roof



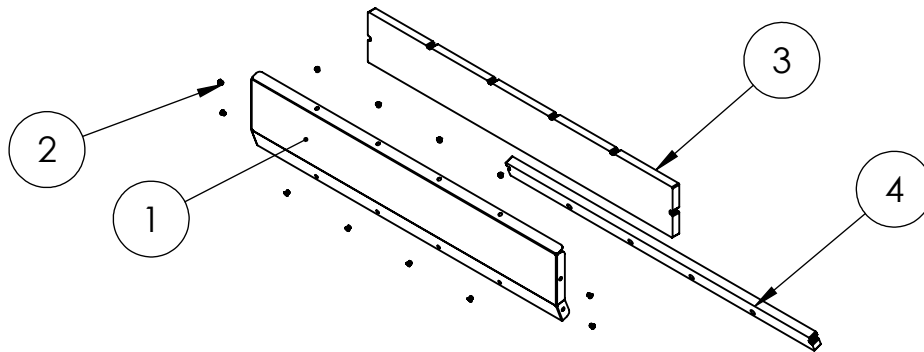
ITEM NO.	PART NUMBER	DESCRIPTION	QTY.
1	792060-030	FRONT ROOF REAR SIDE FOAM	3
2	775060-024	FRONT ROOF	1
3	792060-031	FRONT ROOF FRONT SIDE FOAM	1
4	792060-033	FRONT ROOF BOTTOM REAR FOAM	1
5	352125-1	1/4-20 RIVET NUT 22 GA-10GA	10

## Radiator Panel



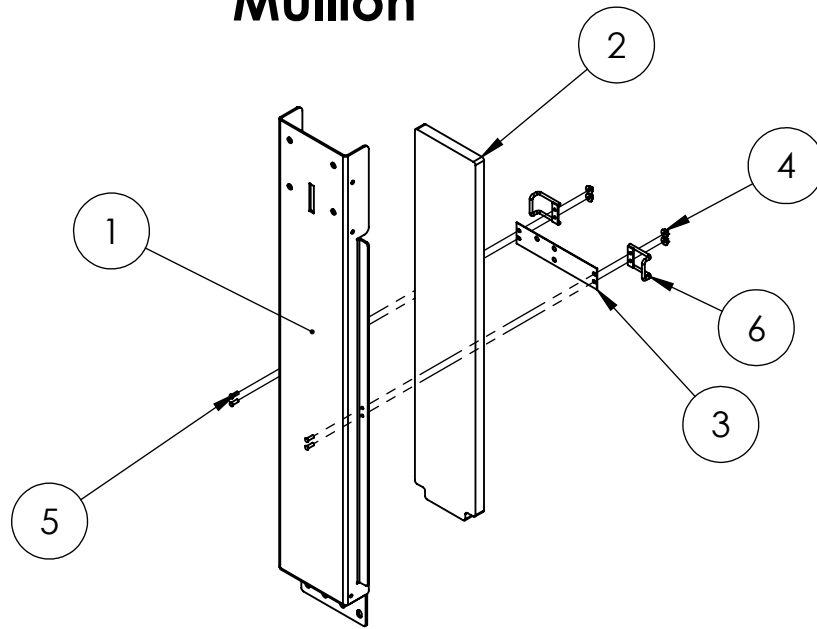
ITEM NO.	PART NUMBER	DESCRIPTION	QTY.
1	1000-0630	RAD PANEL	1
2	352125-1	1/4-20 RIVET NUT 22 GA-10GA	11
3	1000-0629	RAD FOAM	1
4	793060-003	RAD PANEL EXHAUST FOAM	1

## Radiator Exhaust Baffle



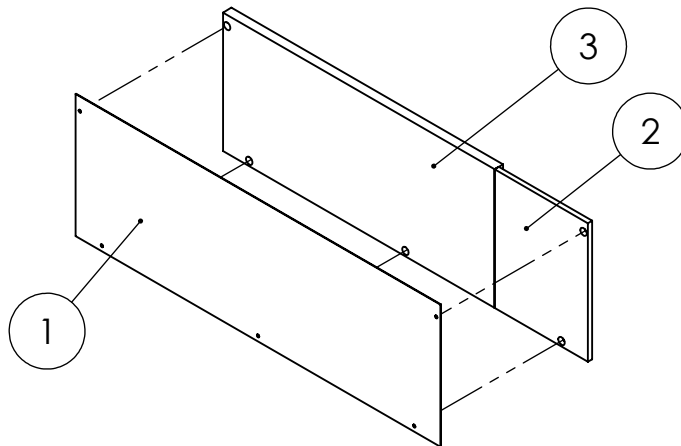
ITEM NO.	PART NUMBER	DESCRIPTION	QTY.
1	775060-021	RAD EXHAUST BAFFLE	1
2	352125-1	1/4-20 RIVET NUT 22 GA-10GA	12
3	792060-024	RAD EXHAUST REAR FOAM	1
4	792060-025	RAD EXHAUST BAFFLE BOTTOM FOAM	1

## Mullion



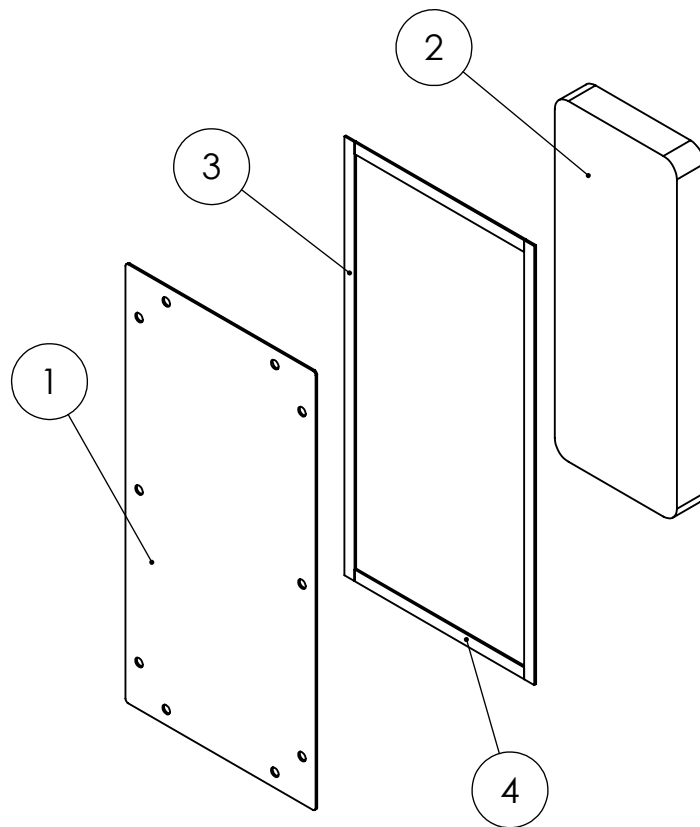
ITEM NO.	PART NUMBER	DESCRIPTION	QTY.
1	775060-016	MULLION	1
2	792060-022	MULLIN FOAM	1
3	775060-030	STRIKER PLATE	1
4	16248-000	.25-20 FLANGE NUT	4
5	94980-003	THREAD STUD .25-20 X .750	4
6	99269-003	STRIKER (FOR -002 LATCH)	2

## Lower Radiator Exhaust Baffle



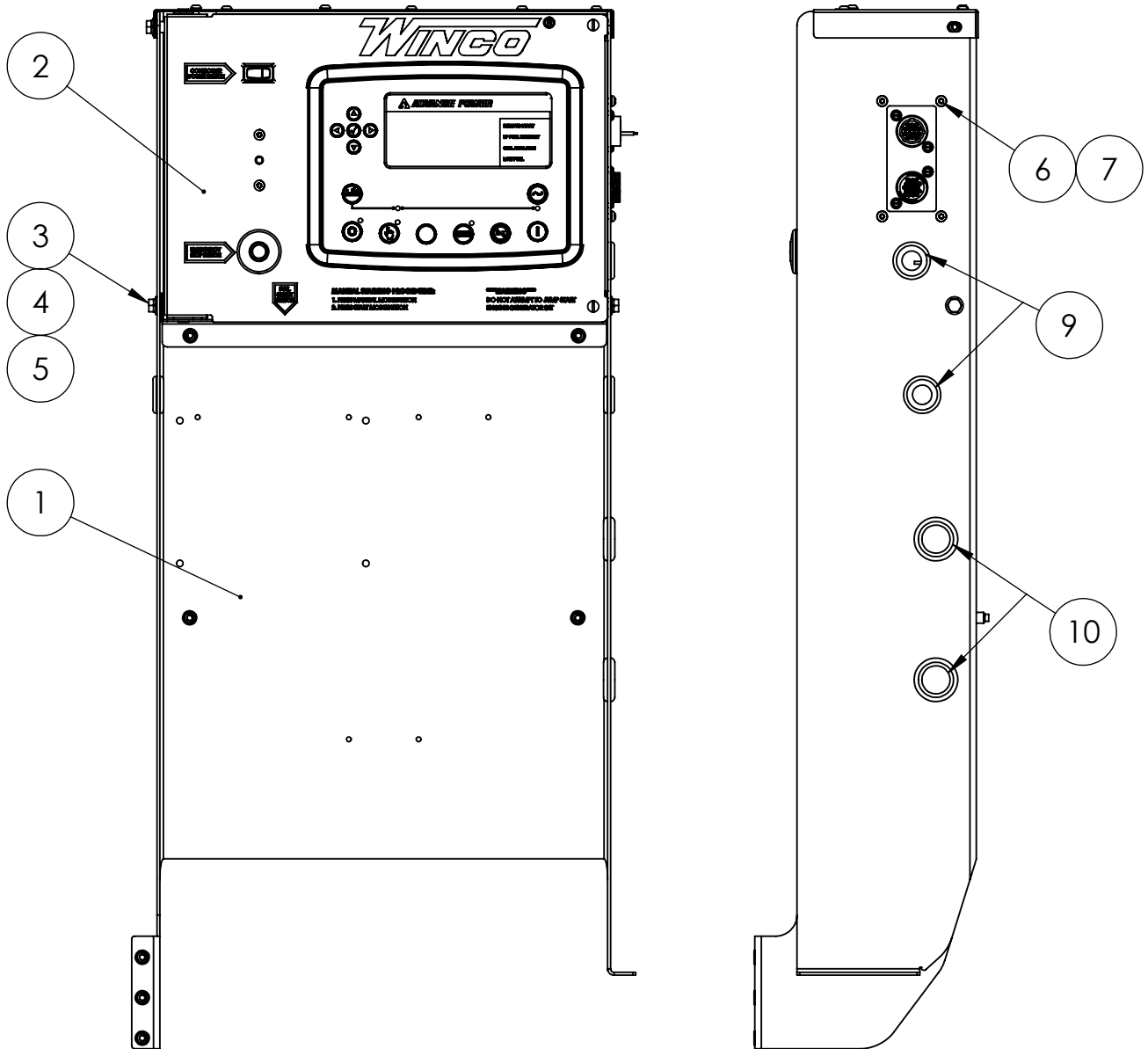
ITEM NO.	PART NUMBER	DESCRIPTION	QTY.
1	775060-022	LOWER RAD EXHAUST BAFFLE	1
2	793060-005	RAD EXHAUST BAFFLE FOAM	1
3	792060-026	LOWER RAD BAFFLE FOAM	1

# Radiator Fill Access Panel



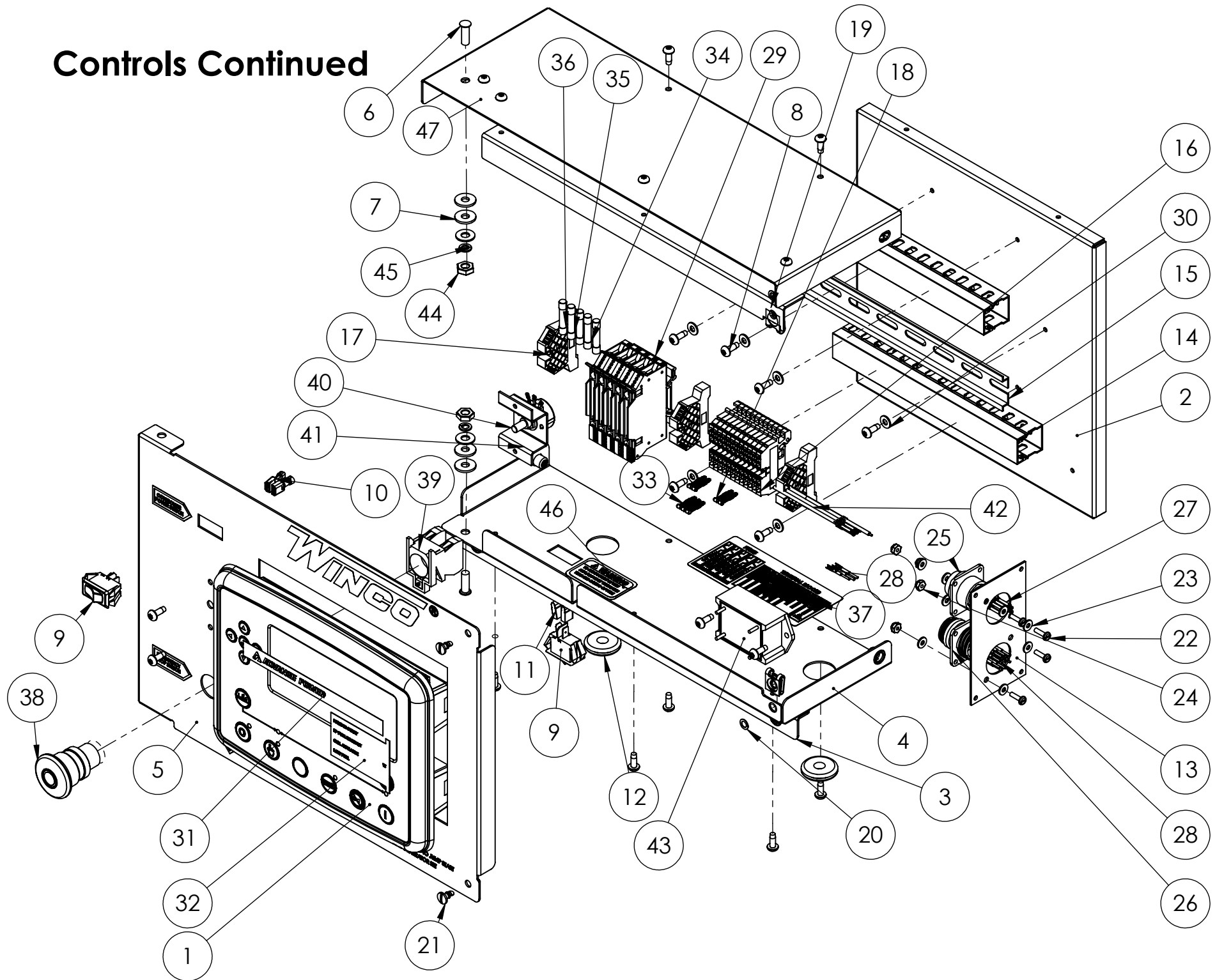
ITEM NO.	PART NUMBER	DESCRIPTION	QTY.
1	1000-0418	RADIATOR FILL ACCESS PANEL	1
2	1000-0266	RADIATOR FILL ACCESS PANEL FOAM	1
3	62912-002	FOAM STRIP 1/16 X 3/8 14" LONG	2
4	62912-002	FOAM STRIP 1/16 X 3/8 6.25" LONG	2

# Controls



ITEM NO.	PART NUMBER	DESCRIPTION	QTY.
1	703060-000	CONTROL PEDISTAL	1
2	351891-51	ECU ENGINE CONTROLLER	1
3	466-000	.25-20X.75 HHB	4
4	479-000	LOCK WASHER .25IN ID.	4
5	512-000	.25 WASHER	4
6	21698-001	TORX PAN HEAD SCREW #10	4
7	96286-002	FLAT WASHER NYLON	4
8	99826-038	BATTERY CHARGER COVER	1
9	23917-000	GROMMET .6875ID X 1	3
10	62486-000	GROMMET 1 X 1.375	2

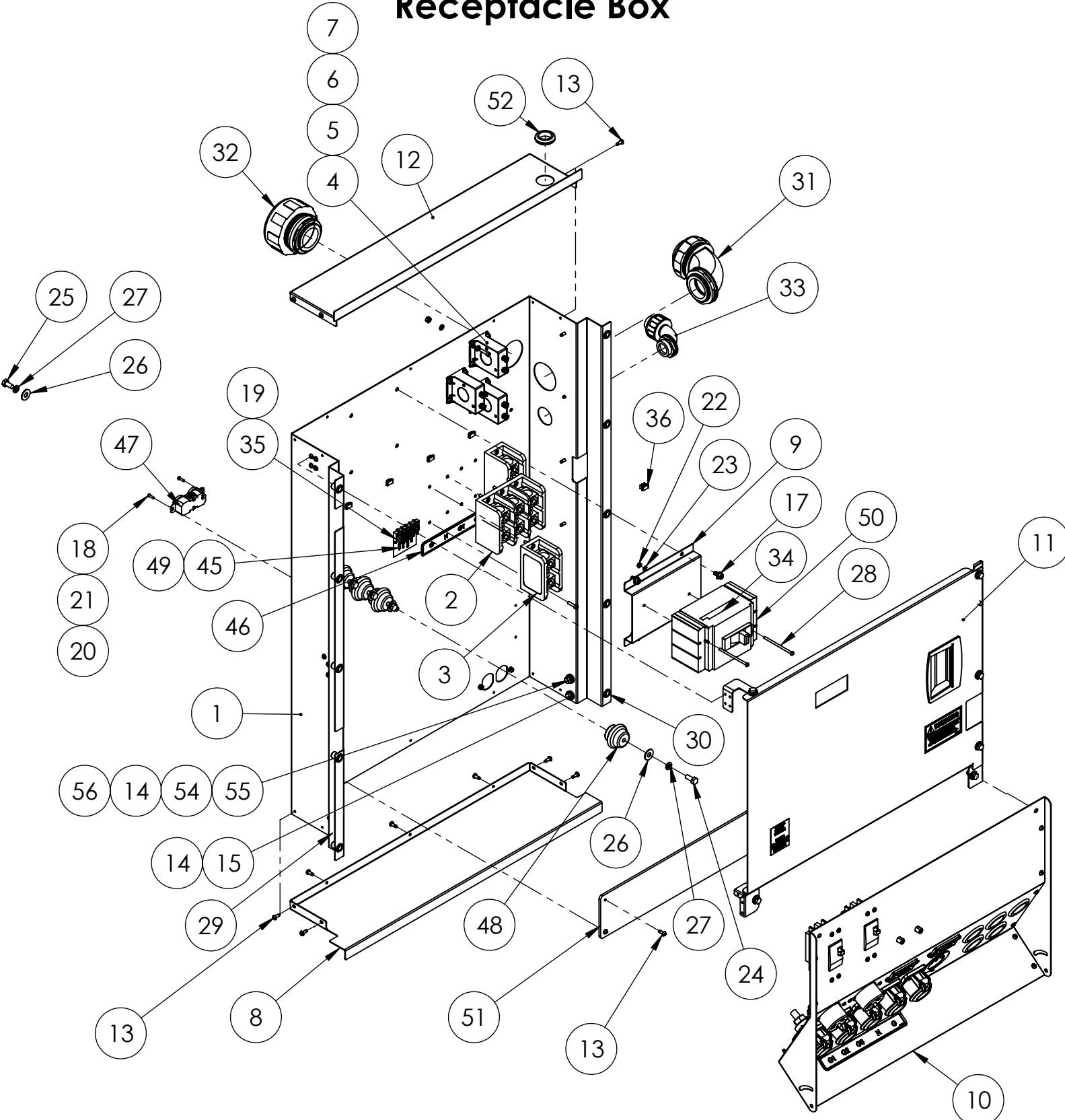
# Controls Continued



## Controls Continued

ITEM NO.	PART NUMBER	DESCRIPTION	QTY.
1	351112-29	DEEP SEA ELECTRONICS 7310 MKII	1
2	351900-42	DIN RAIL MOUNTING PLATE	1
3	351900-44	COVER SUPPORT BRACKET	1
4	351900-45	DSE8610 CONTROL BOX BOTTOM	1
5	351900-47	DSE 7310 MKII FRONT PANEL	1
6	94980-003	THREAD STUD .25-20 X .750	2
7	96286-001	1/4" NYLON WASHER	4
8	21698-001	TORX PAN HEAD SCREW #10	21
9	64089-000	SPST, ROCKER SWITCH	2
10	48602-003	TERMINAL FEMALE 16-14 AWG .250 TAB	2
11	61898-000	TERMINAL FLAG 16/14AWG .250	2
12	23917-002	GROMMET, .375ID X 1	2
13	351900-51	PLUG MOUNTING PLATE	1
14	352017-001	WIRE DUCT, 8.5IN	2
15	64551-005	DIN RAIL 9.5"	1
16	80623-009	TERMINAL BLOCK, DIN MOUNTED, SPRING CAGE	12
17	80623-010	END BLOCK, DIN MOUNTED	3
18	80623-011	2-POLE TERMINAL BLOCK JUMPER	2
19	91683-000	1/4 TURN CLIP NUT	2
20	91684-000	RETAINER RING 1/4 TURN SPLIT RING	2
21	91682-001	STUD 1/4 TURN SLOTTED	2
22	24988-000	SCREW 6-32 X 1/2 BIND	4
23	425-000	#6 FLATWASHER	8
24	51802-000	NUT HEX #6-32 NYLOCK	4
25	96925-002	14 PIN CONNECTOR	1
26	96925-006	16 PIN CONNECTOR	1
27	96923-001	TERMINAL, SOCKET, 18-16AWG	10
28	96924-001	TERMINAL, PIN, 18-16AWG	16
29	2489-003	DIN RAIL FUSE HOLDER 1-1/4 X 1/4IN	5
30	598-000	#10 WASHER	6
31	16600-005	DSE MKII ADVANCE POWER LOGO INSERT	1
32	16601-007	DSE 8610 MKII LIGHT LEGEND CARD INSERT	1
33	80623-012	3-POLE TERMINAL BLOCK JUMPER	1
34	95064-008	FUSE AGC 2 AMP	3
35	95064-000	FUSE AGC 3 AMP	1
36	95064-006	FUSE AGC 10 AMP	1
37	351095-16	DECAL, FUSES AND TERMINAL BLOCKS	1
38	99783-001	SWITCH, PUSH-PULL	1
39	99783-002	SWITCH CONTACT	1
40	97517-001	RHEOSTAT	1
41	351900-36	RHEOSTAT MOUNTING BRACKET	1
42	96923-101	PLUG TERMINAL	4
43	96333-001	LOW COOLANT MODULE	1
44	638-000	HEX NUT, .25IN	2
45	479-000	LOCK WASHER, .25" SPLIT	2
46	63941-004	DECAL FUSE WARNING (ENGLISH)	1
47	351900-52	DSE CONTROL BOX TOP	1
48	351900-53	DSE PANEL STOP	1
49	11067-000	18 GA WIRE	1
50	512-000	.25 WASHER	2

# Receptacle Box

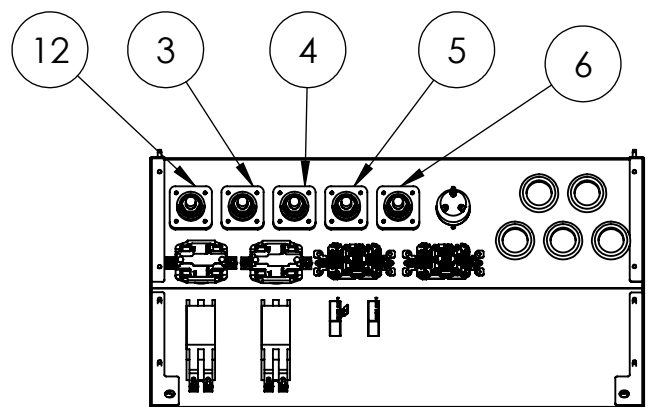
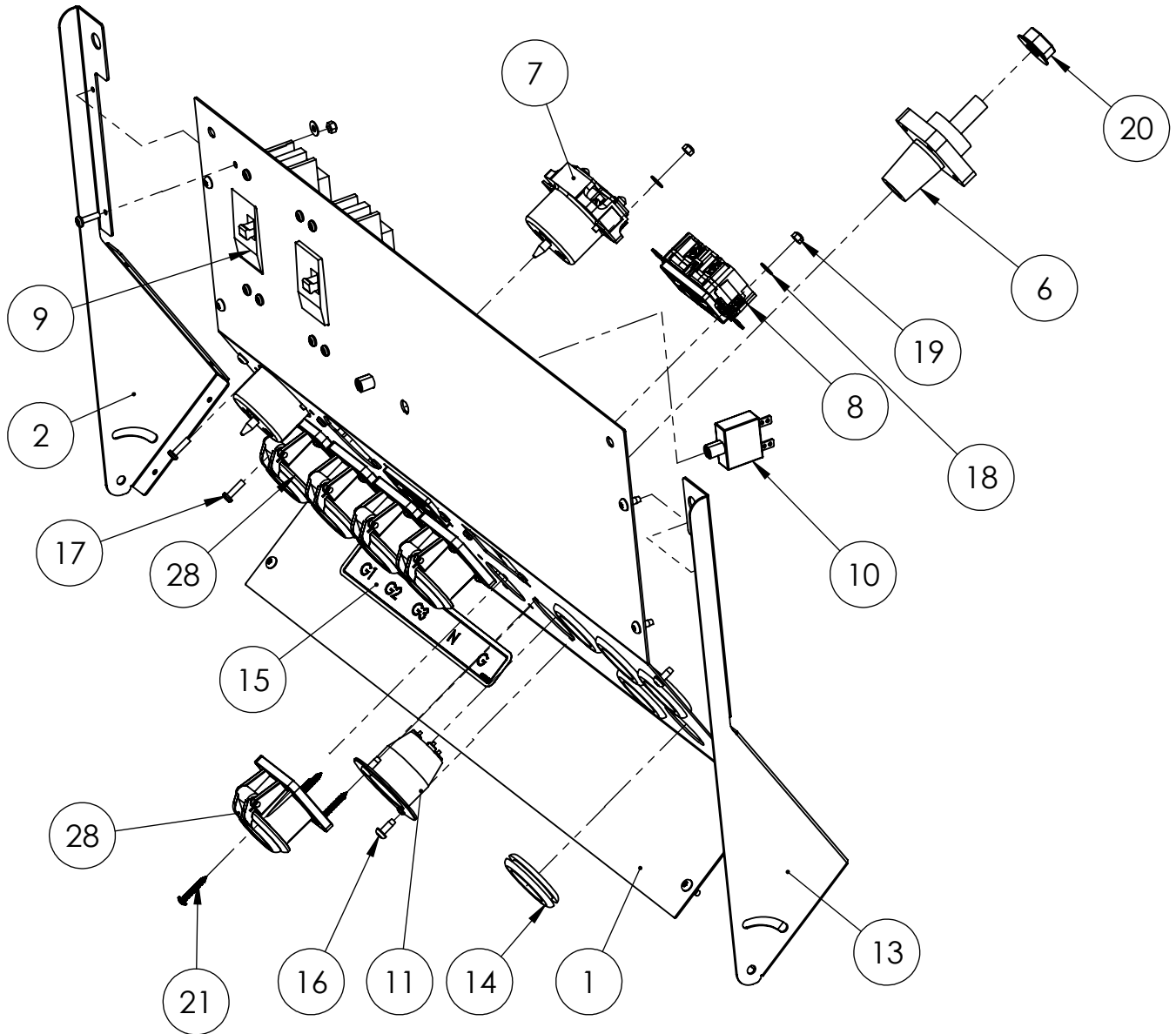




## Receptacle Box Continued

ITEM NO.	PART NUMBER	DESCRIPTION	QTY.
1	1000-1723	RECEPTACLE BOX BACK AND SIDES	1
2	97753-016	TERMINAL BLOCK 3	1
3	97753-017	TERMINAL BLOCK 1	2
4	80126-003	CT 150:5 PANEL MOUNT	3
5	64872-000	SOC.HCS 10-24 X 3/4 BLK	22
6	598-000	#10 WASHER	34
7	5315-000	NUT HEX 10-24 NYLON	22
8	1000-1725	RECEPTACLE BOX BOTTOM	1
9	1000-0633	CB RISER	1
10	1000-1566	RP35 CAMLOCK PANEL	1
11	1000-1565	BREAKER SERVICE DOOR ASSY	1
12	1000-1724	RECEPTACLE BOX TOP	1
13	21698-001	TORX PAN HEAD SCREW #10	29
14	96286-001	1/4" NYLON WASHER	8
15	476-000	.25-20X.625 HHB	2
16	16248-000	.25-20 FLANGE NUT	4
17	352120-1	1/4-20 X .500 FHCS	4
18	7792-001	BZ RHMS 6-32X.5	2
19	7792-000	RHMS 6-32 X .625	2
20	425-000	#6 FLATWASHER	4
21	51802-000	NUT HEX #6-32 NYLOCK	4
22	5113-000	NUT HEX # 8	2
23	21976-000	#8 LOCKWASHER EXTERNAL TOOTH	2
24	467-000	HHCS 5/16-18X.75	5
25	477-000	HHCS .3125-18X.625	5
26	526-000	5/16 FLAT WASHER	10
27	480-000	5/16 SPLIT LOCKWASHER	10
28	44342-000	RHMS 8-32 X 3.0	2
29	352125-1	1/4-20 RIVET NUT 22 GA-10GA	4
30	352126-1	RIVET NUT 5/16-18 .027-.150	10
31	16522-001	2 IN FLEXIBLE CONDUIT FITTING	1
32	16522-000	2" FLEXIBLE CONDUIT STRAIGHT BLACK	1
33	16482-000	FLEXIBLE CONDUIT FITTING 90	1
34	81097-049	12VDC SHUNT TRIP	1
35	80623-008	TERMINAL BLOCK, 4PT, 20A	1
36	96116-006	PUSH CLIP CABLE TIE MOUNT BASE .25 HOLE	5
37	90344-000	TERM., RING, 2AWG, 3/8 STUD	15
38	91321-002	TERM.RING. 2AWG 1/2IN STUD	5
39	4158-000	TERMINAL RING 16-14 AWG #10	2
40	81963-001	TERMINAL RING 18-22 AWG #10	4
41	22370-025	TERMINAL SPADE 22-18AWG #5-#6	4
42	61898-000	TERMINAL FLAG 16/14AWG .250	6
43	48602-023	TERMINAL FEMALE 22-18 AWG .187 TAB	1
44	96924-001	TERMINAL, PIN, 18-16AWG	4
45	99958-000	DECAL TERM STRIP	1
46	351591-22	TERMINAL BLOCK DECAL	1
47	50766-000	NEMA 5-20R DUPLEX RECEPTACLE	1
48	94378-002	STANDOFF INSULATOR	5
49	80623-013	2 POLE TERMINAL BLOCK JUMPER	1
50	81097-038	CIR.BRK.125A-3PL-600V, SQD#HDL36125	1
51	1000-0679	RED ISOLATION BARRIER FOR CAMLOKS	1
52	62486-000	GROMMET 1 X 1.375	1
53	48602-003	TERMINAL FEMALE 16-14 AWG .250 TAB	4
54	512-000	.25 WASHER	2
55	439-000	.25-20 X 1 HHB	2
56	479-000	LOCK WASHER, .25" SPLIT	2

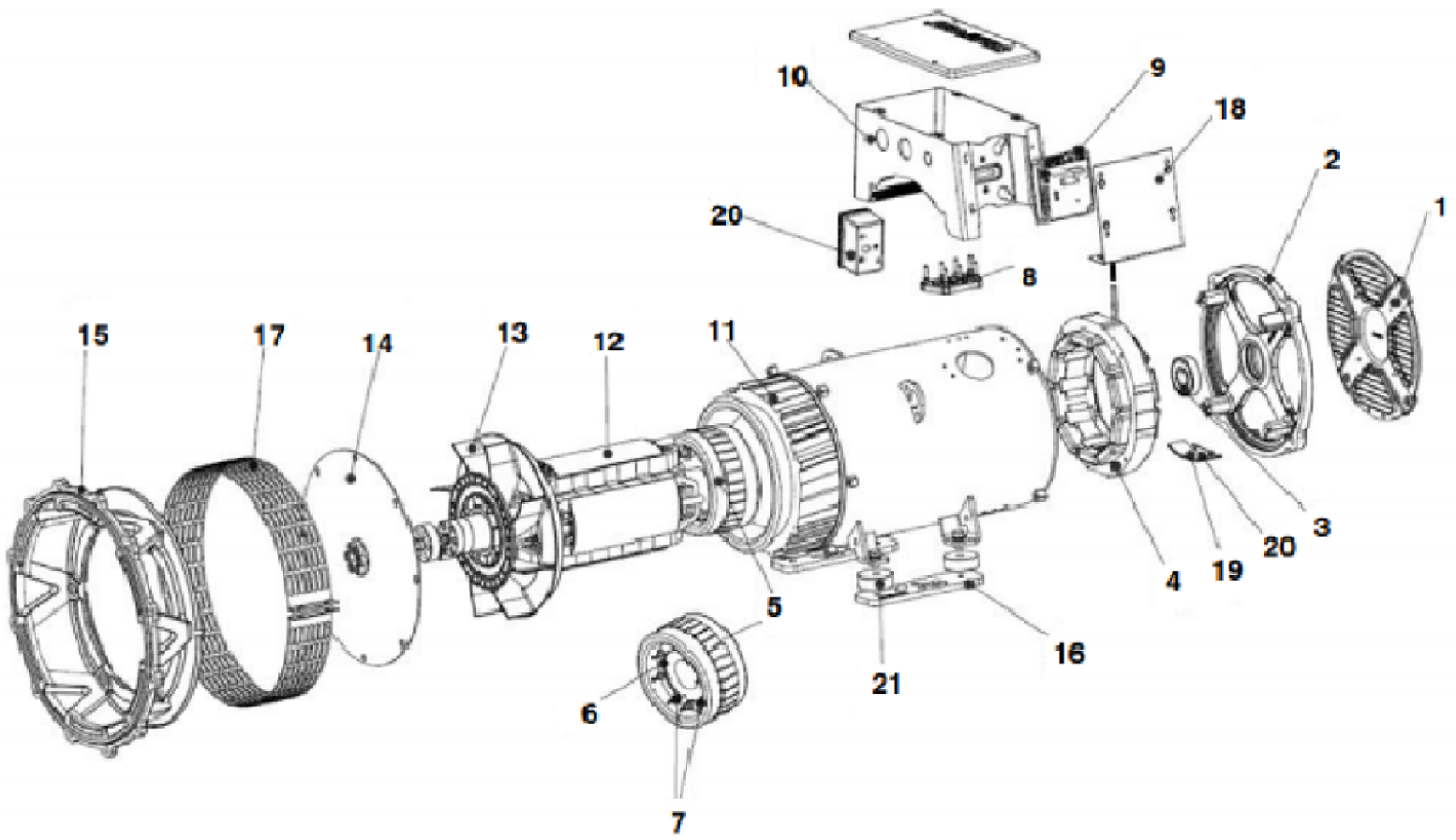
# Receptacle Box Continued



## Receptacle Box Continued

ITEM NO.	PART NUMBER	DESCRIPTION	QTY.
1	726060-000	CAM LOCK PANEL	1
2	726060-002	CAM LOCK LEFT SIDE	1
3	351282-52	CAM LOCK CONNECTOR, FEMALE, RED	1
4	351282-32	CAM LOCK CONNECTOR, FEMALE, BLUE	1
5	351282-22	CAM LOCK CONNECTOR, FEMALE, WHITE	1
6	351282-12	CAM LOCK CONNECTOR, FEMALE, GREEN	1
7	91889-000	RECEPT 125/250V 50A	2
8	15147-003	RECEPTACLE NEMA 5-20R GFCI	2
9	57030-000	CIR. BRK. 50A-2PL-240V	2
10	91286-001	CIRCUIT BREAKER, 20A, 1 PL	2
11	99896-002	PLUG REVERSE NEMA 5-15	1
12	351282-42	CAM LOCK CONNECTOR, FEMALE, BLACK	1
13	726060-001	CAM LOCK PANEL RIGHT SIDE	1
14	23917-005	GROMMET 1-5/16" ID	5
15	351591-24	TERMINAL BLOCK DECAL G1-G	1
16	21698-001	TORX PAN HEAD SCREW #10	14
17	24198-001	BHMS #8-32 x .625 BLACK	16
18	511-000	#8 FLATWASHER	16
19	95985-000	NUT HEX #8-32 NYLOK	16
20	16248-001	.5-13 FLANGE NUT	5
21	24738-001	#8x1 SS SHEET METAL SCREW	20
22	91320-002	TERMINAL, RING, 8AWG, 1/2 STUD	6
23	91457-001	TERM RING 10-12AWG .5	3
24	48602-003	TERMINAL FEMALE 16-14 AWG .250 TAB	4
25	48602-010	TERM FEMALE 10-12AWG .250X.032 TAB	1
26	91958-000	TERMINAL, ADAPTER, 1 TO 2 MALE TAB	1
27	22370-007	TERMINAL SPADE 16/14AWG #10STUD	3
28	351282-601	CAM COVER CLEAR WITH MOUNTING SCREWS	5

# Generator

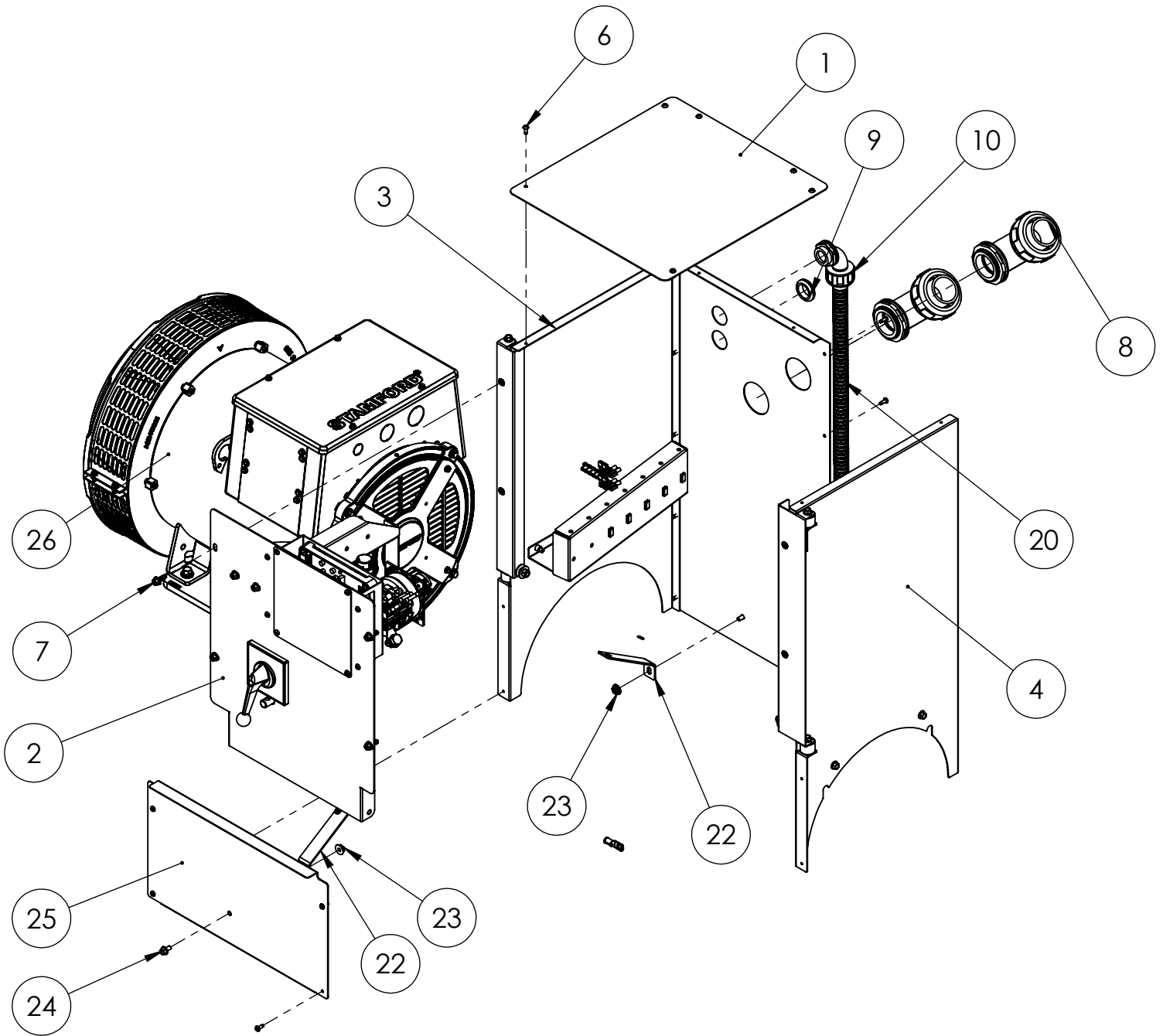


ITEM	DESCRIPTION	DE40	QTY
--	COMPLETE GENERATOR END	350023-27	1
--	STAMFORD MODEL	S1L2-K1	--
--	WINDING	711	--
9	AVR AS540	8-101	1
--	RECTIFIER SERVICE KIT	8-818	1

Contact Winco for additional generator parts support.

EXPECTED RESISTANCE ( $\Omega$ )@ 20°C (+/-10%)	
MODEL	S1L2-K1
STATOR WINDING (LEAD TO NEUTRAL)	0.1774
ROTOR WINDING	0.965
EXCITER STATOR	15.50
EXCITER ROTOR (LEAD TO LEAD)	0.2244
AUX WINDING	3.91

# Switch Assembly

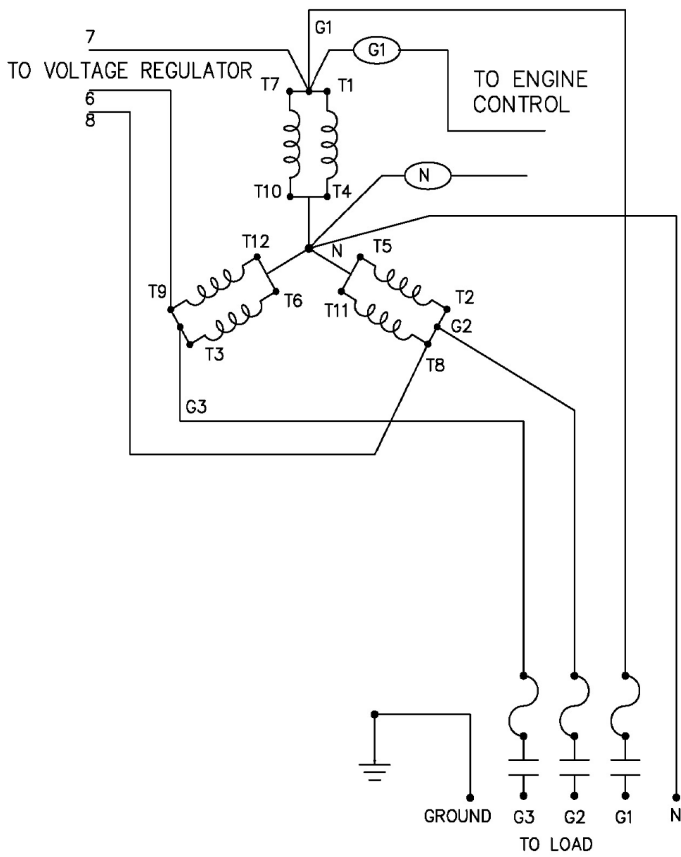


## Switch Assembly Continued

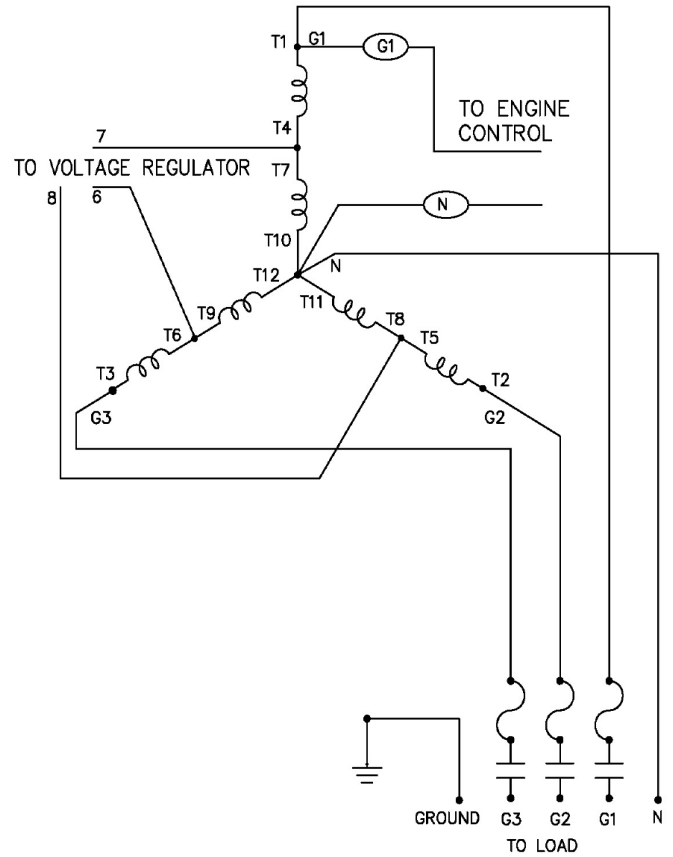
ITEM NO.	PART NUMBER	DESCRIPTION	QTY.
1	1000-0636	TERMINAL BOX COVER	1
2	1000-1560	VSS PANEL ASSY	1
3	1000-1562	VSS LH PANEL ASSY	1
4	1000-1561	VSS RH PANEL ASSY	1
5	1000-0640	RIGHT TERMINAL BOX PANEL	1
6	21698-001	TORX PAN HEAD SCREW #10	20
7	352120-2	1/4-20 X .75 FHCS	4
8	16522-001	2 IN FLEXIBLE CONDUIT FITTING	2
9	62486-000	GROMMET 1 X 1.375	1
10	16482-000	FLEXIBLE CONDUIT FITTING 90	1
11	90344-000	TERM., RING, 2AWG, 3/8 STUD	5
12	7547-001	TERMINAL RING 16/14AWG 1/2 STUD	7
13	61898-000	TERMINAL FLAG 16/14AWG .250	9
14	91540-001	TERM RING 6 AWG .500 STUD	4
15	96924-001	TERMINAL, PIN, 18-16AWG	6
16	91382-001	TERM., RING, 4AWG, 1/2 STUD	13
17	48602-004	TERMINAL MALE 16-14 AWG .250 TAB	7
18	96926-002	14 PIN CONNECTOR PLUG	1
19	99555-001	ADAPTER STRAIN RELIEF	1
20	62487-002	LOOM 24 IN	1
21	96924-101	PLUG TERMINAL	4
22	1000-1713	GENERATOR BOX SUPPORT	2
23	16248-000	.25-20 FLANGE NUT	2
24	352120-1	1/4-20 X .500 FHCS	2
25	1000-0639	GEN SWITCH PANEL	1
26	350023-27	GEN END S1L2-K1 SAE3-11	1
27	19221-232	TERMINAL, RING, 4AWG, 3/8 STUD	11
28	598-000	#10 WASHER	4
29	95810-000	CABLE TIE HOLDER	2
30	477-000	HHCS .3125-18X.625	4
31	16249-000	.3125-18 FLANGE	4
32	48602-003	TERMINAL FEMALE 16-14 AWG .250 TAB	4

# Generator Connections

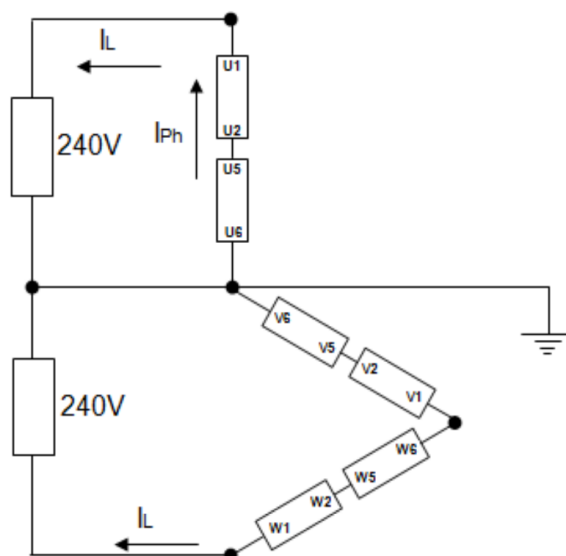
## Low Voltage Wye 120/208V 60Hz



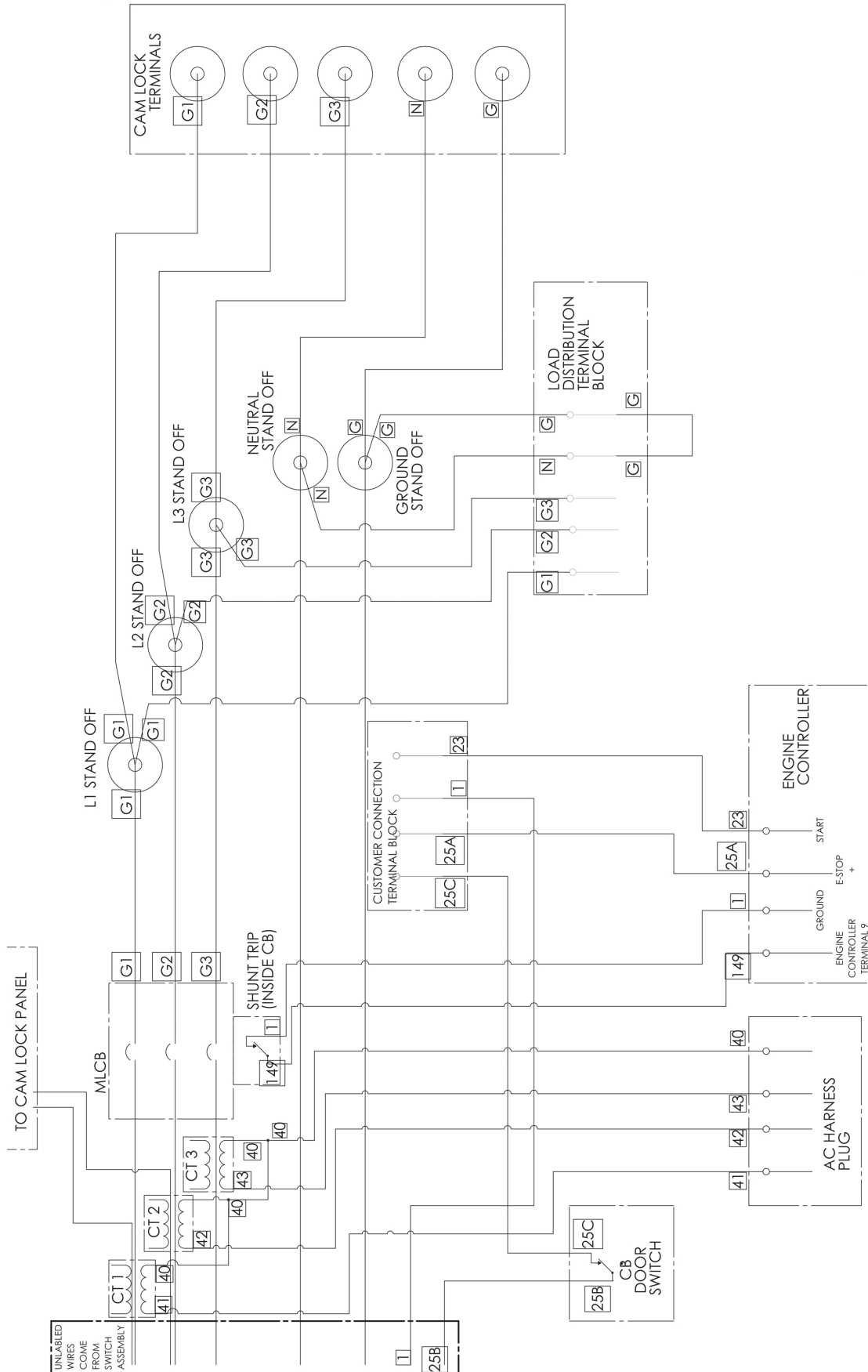
## High Voltage Wye 240/416 - 277/480V 60Hz



## Zig Zag 2 - 240V 60Hz

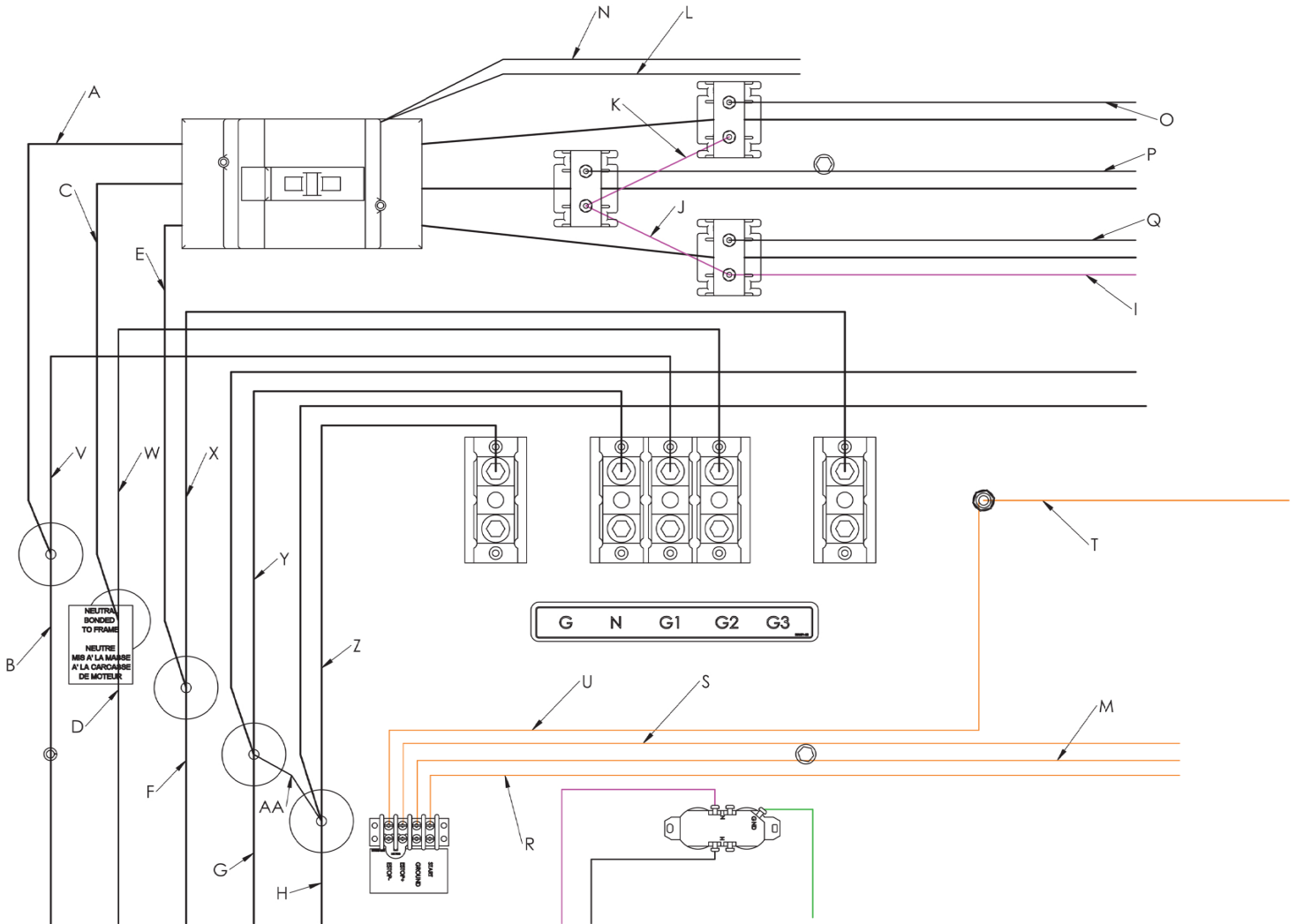


# Receptacle Wiring Diagram

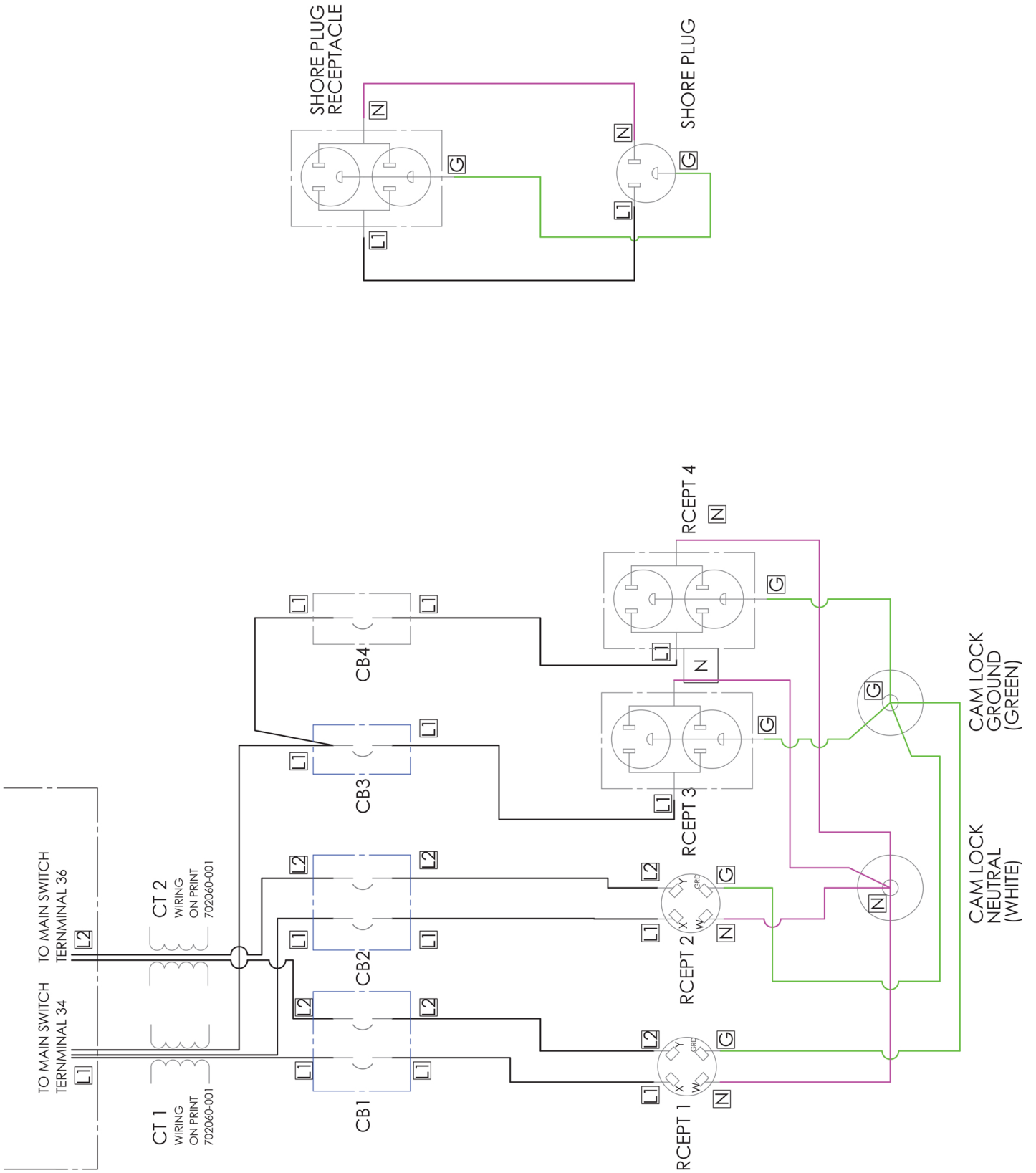




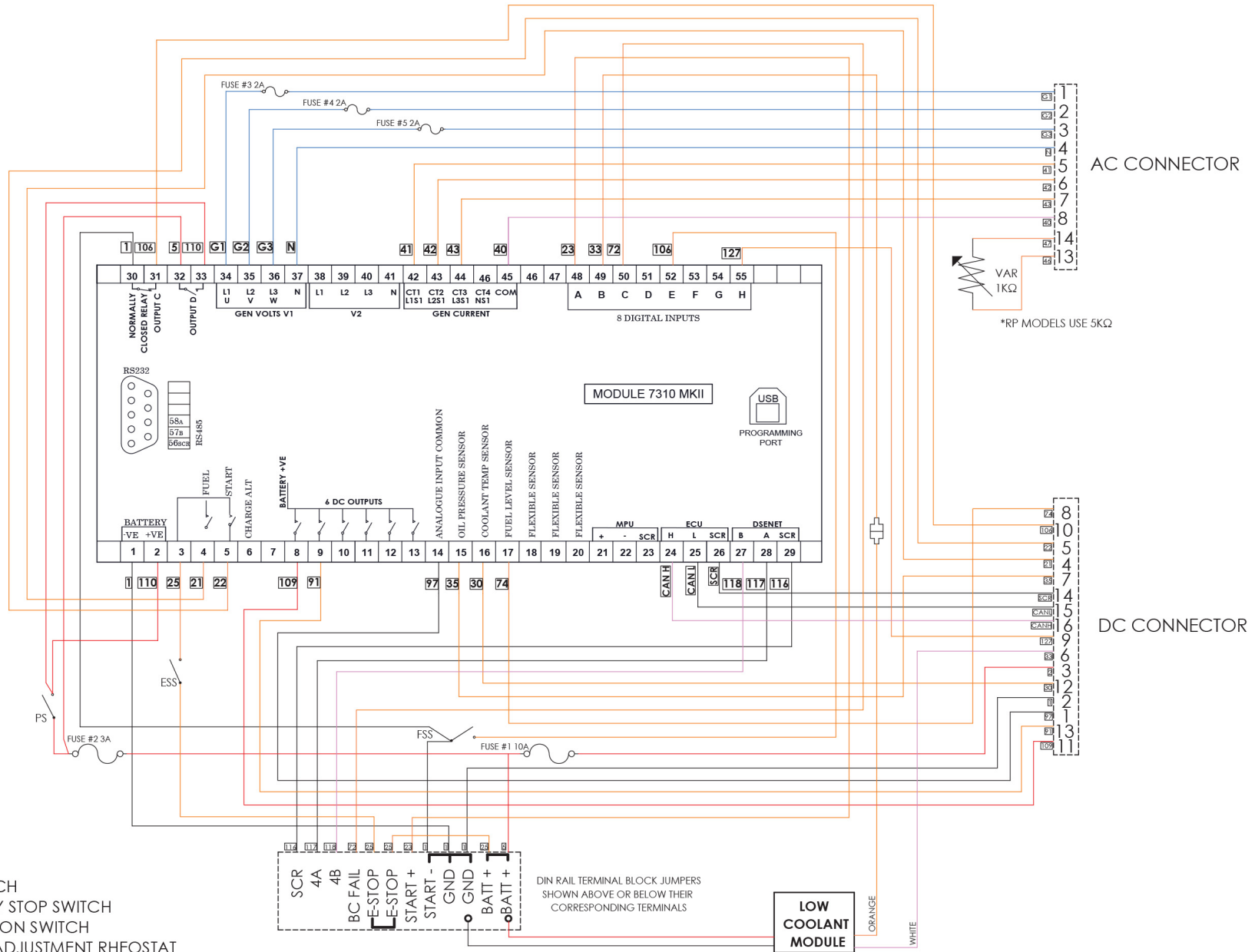
# Receptacle Wiring Diagram



# Camlock Wiring Diagram



# Controller Wiring Diagram

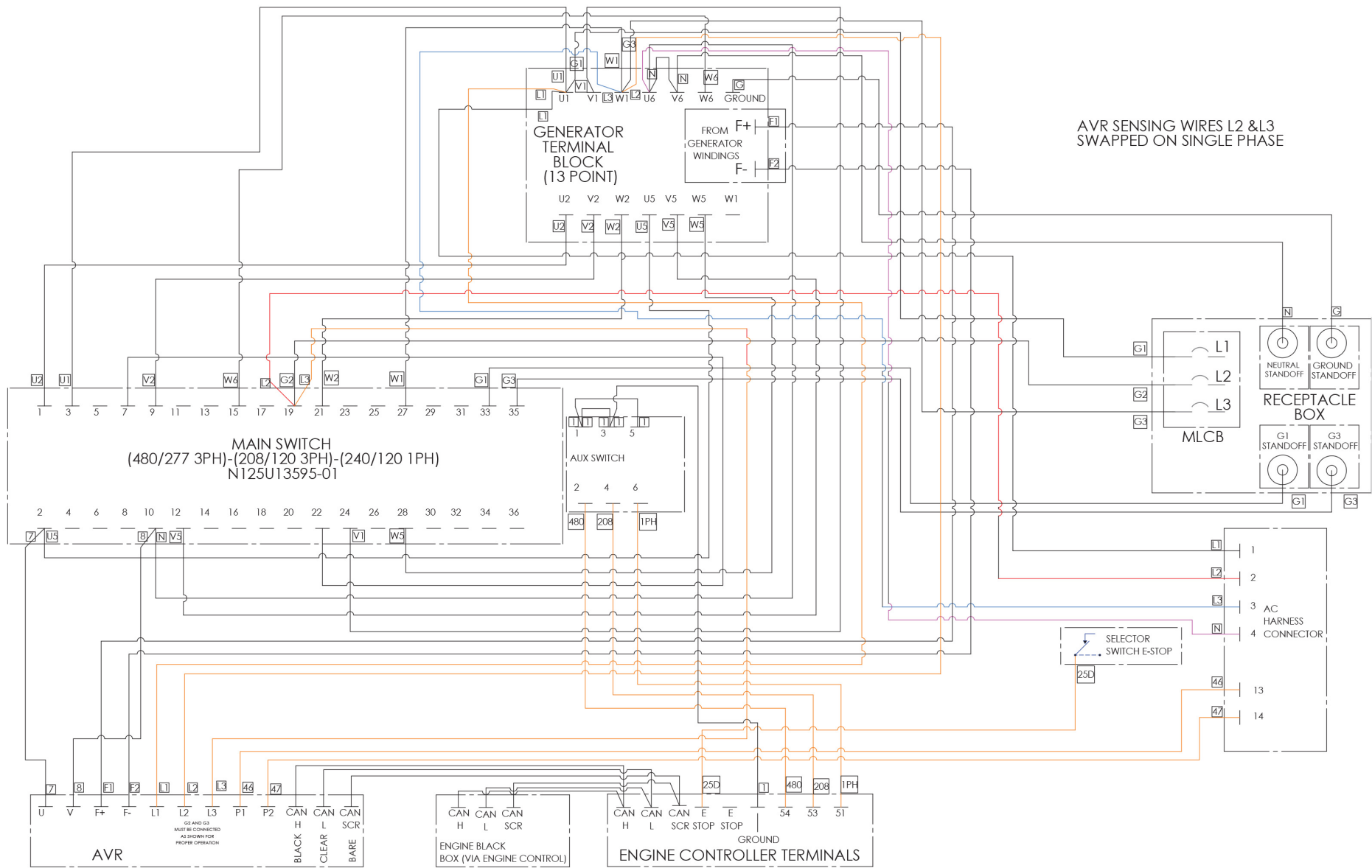


**LEGEND:**  
 PS: POWER SWITCH  
 ESS: EMERGENCY STOP SWITCH  
 FSS: FUEL SELECTION SWITCH  
 VAR: VOLTAGE ADJUSTMENT RHEOSTAT

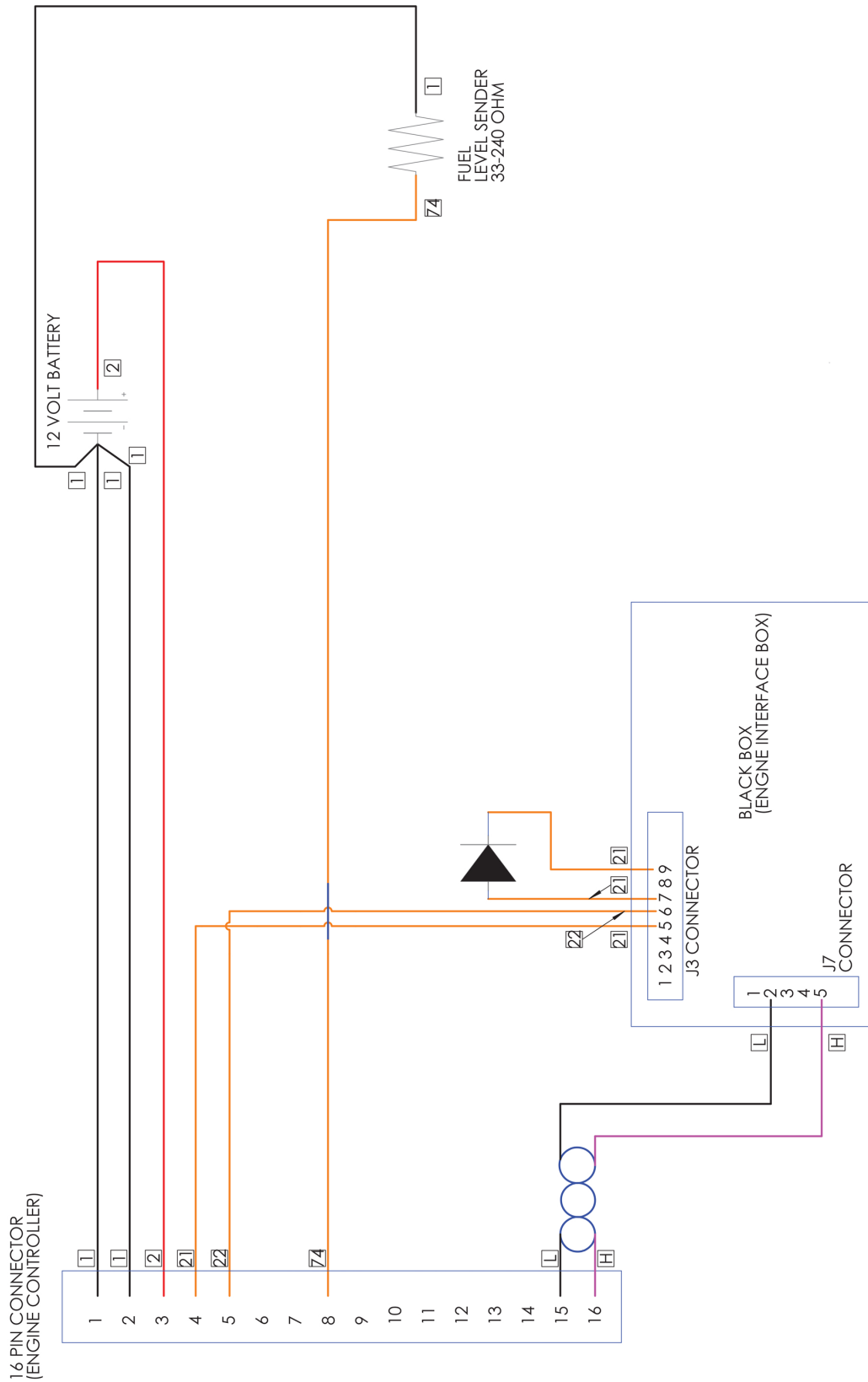
DIN RAIL TERMINAL BLOCK JUMPERS  
 SHOWN ABOVE OR BELOW THEIR  
 CORRESPONDING TERMINALS

**LOW  
 COOLANT  
 MODULE**

# Selector Switch Wiring Diagram



# DC Harness Schematic



# Engine Wiring Schematic

