

MODEL DR30C4-J 30 KW, 37.5 KVA
 120/240 Volts, 3 Phase, 4 Wire
 TYPE 1

REF.	PART NO.	DESCRIPTION	QTY.
N.S.	EC-18000	Engine - Cummins Model 4B3.9	1
1	G-7745-5	Skid Assembly	1
2	G-7710	Engine Coolant Temperature Sender	1
3	G-7725	Engine Oil Pressure Sender	1
4	WT-24-1	Engine High Temperature Coolant Switch (205°F)	1
5	OP-23	Engine Low Oil Pressure Switch	1
6	G-5225	Generator Support	1
7	N.A.	Radiator Fan Guard	-
8	S-5813-1	Coupling Disc	2
9	EE-1201	Start Contactor	1
10	S-6902	Fan Baffle	1
11	EE-1138	Magnetic Pick-up	1
12	WW-60003	Shielded Cable	A.R.
13	N.A.	Engine Adaptor	-
14	S-7037-3	Generator Fan Guard	1
15	S-7061	Spring	1
16	G-5818-15	Frame & Stator Assembly	1
17	G-6881-2	Stator Assembly (Wound Stack)	1
18	G-5816	Stator Frame Assembly (Does Not Include Item#17)	1
19	I-825-1	Hub	1
20	G-5829	Fan	1
21	G-6922-50	Revolving Electrical Assembly (Includes Items: 19;20;22;23 & 24)	1
22	G-6920-25	Rotor Assembly	1
23	EE-3105	Diode (Forward)	3
24	EE-3106	Diode (Reverse)	3
25	D-7	Bearing	1
26	H-1202	Exciter Field Coil	4
27	G-292-1	Field Pole	4
28	S-6906	Exciter Field Frame	1
29	I-881	Bearing Housing	1
30	S-3952	Bearing Retainer	1
N.S.	G-7599-10	Panel Assembly Complete	1

PARTS DRAWING: IF-5474-5 and IF-5745
 WIRING DIAGRAMS: IF-5698 and IF-5699-4

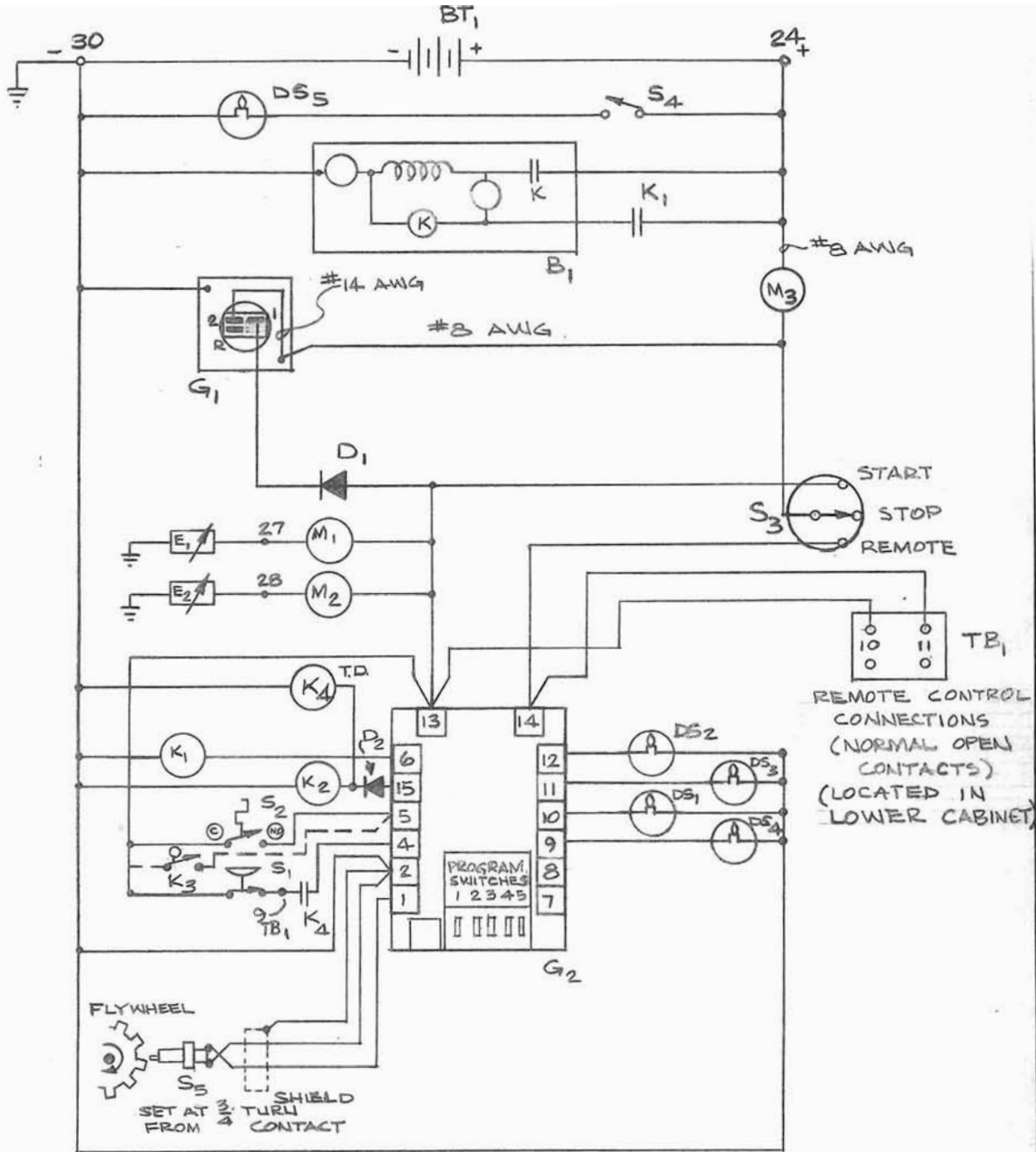
PANEL ASSEMBLY G-7599-10

REF.	PART NO.	DESCRIPTION	QTY.
1	CT-3	Current Transfor	3
2	EE-151	Switch (Panel Illumination)	1
3	EE-181	Switch (Engine Control)	1
4	EE-1939	Fault Light Assembly	4
5	S-10523	Panel Cover (Load Cabinet)	1
6	EE-425	Fuse Holder Assembly	2
6A	EE-445-1	Fuse (5 Amp, 250 Volt, Slo-Blo)	2
7	EE-151	Switch (Voltage Regulator)	1
8	EE-242	Knob (Voltage Reg. Rheostat)	1
9	R-91	Rheostat	1
10	EE-2824-12	Field Breaker	1
11	WT-17	Running Time Meter	1
12	S-9813-5	Front Panel (Control Cabinet)	1
13	VM-69-1	Voltmeter (0-300)	1
14	AM-116-11	Ammeter (-0-150)	1
15	EE-256-1	Selector Switch (Voltmeter-Ammeter)	1
16	FM-22-2	Frequency Meter	1
17	G-7710	Engine Coolant Temperature Gauge	1
18	EE-924	Panel Illumination Light	1
18A	EE-933-1	Lamp	1
19	G-7725	Engine Oil Pressure Gauge	1
20	AM-39	D.C. Charge Rate Ammeter (100-0-100)	1
21	EE-345-1	Insulator (Terminal Block)	1
22	EE-345	Terminal Block (2-Pole)	1
23	EE-3211	Engine Controller	1
24	R-107	Resistor	1
25	EE-345	Terminal Block (2-Pole)	1
26	EE-345-1	Insulator (Terminal Block)	1
27	EE-653-4	Insulator (Terminal Block)	1
28	EE-653	Terminal Block (8-Pole)	1
29	EE-1752-1	Voltage Regulator	1
30	S-9814	Panel Cover (Control Cabinet)	1
31	S-9816-1	Panel Bottom	1
32	G-8070-2	Lower Panel Assembly Top	1
33	G-7747	Lower Terminal Box Cabinet	1
N.S.	W-261	Vibration Isolator (Panel)	4

PL-2522

(Sheet 2 of 2)

		REVISIONS		
LTR	DESCRIPTION	DATE	BY	APPROVED
A	ADDED K ₄	3-2-87	M.E.	
B	VIAS EE-1201	4-6-87	M.E.	



REMOTE CONTROL CONNECTIONS (NORMAL OPEN CONTACTS) (LOCATED IN LOWER CABINET)

SW ₅	OFF
SW ₄	ON
SW ₃	OFF
SW ₂	OFF
SW ₁	OFF
PROGRAM SWITCHES	POSITION
G ₂ FACTORY SETTINGS	

UNLESS STANDARD WITH AT LOW & HIGH TEMP.

DIESEL ENGINE

REF	PART NO.	SZ	DESCRIPTION	QTY.
PARTS LIST				
WINPOWER CORPORATION NEWTON, IOWA 50208				
TITLE WIRING DIAGRAM, D.C.				
PART NO. _____		SIZE C	REV _____	
ASSY BUILD NO. _____		SCALE —	DATE 9-6-85	SHEET 1 OF 3

NOTICE: THIS DOCUMENT IS CONFIDENTIAL AND IS THE PROPERTY OF WINPOWER CORPORATION, NEWTON, IA. IT MUST NOT BE USED IN ANY WAY DETRIMENTAL TO OUR INTEREST. REPRODUCTION OF ITS CONTENT BY ANY MEANS OR IN ANY FORM WITHOUT EXPRESS PERMISSION OF THE WINPOWER MANAGEMENT IS PROHIBITED.

ENGINE PARTS LIST

REF	PART NO.	DESCRIPTION
3 ₁	SEE ENGINE MANUAL	START MOTOR W/ SOLENOID SWITCH
BT ₁	VARIOUS	BATTERY
E ₁	G-7710	SENDER, OIL PRESSURE
E ₂	G-7725	SENDER, ENGINE COOLANT TEMPERATURE
G ₁	SEE ENGINE MANUAL	BATTERY CHARGING ALTERNATOR
K ₁	EE-1287 (B)	START CONTACTOR
K ₂	SEE ENGINE MANUAL	FUEL SOLENOID
K ₃	EN-426	LOW FUEL SWITCH (SEE NOTE #2)
S ₁	OP-23	SWITCH, LOW OIL PRESSURE (CLOSED 0-15 PSI)
S ₂	WT-24-1	SWITCH, HIGH COOLANT TEMPERATURE (205°F)
S ₅	EN-1138	MAGNETIC PICK-UP

CONTROL CABINET PARTS LIST

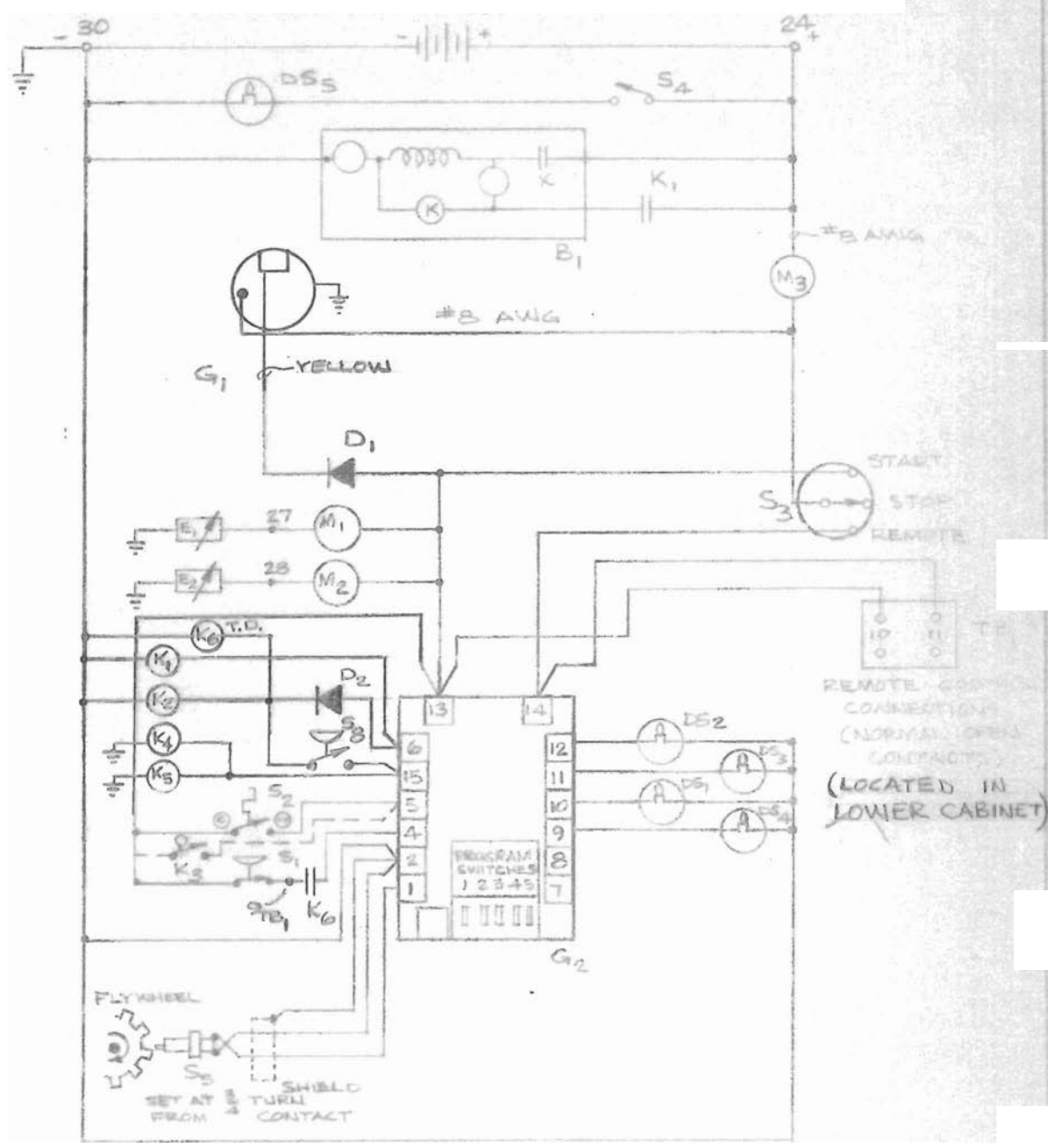
REF	PART NO.	DESCRIPTION
D _{1,2}	G-7879	BLOCKING DIODE ASSEMBLY
DS ₁	EE-1939	OVER CRANK FAULT LIGHT
DS ₂	EE-1939	LOW OIL PRESSURE FAULT LIGHT
DS ₃	EE-1939	HIGH COOLANT TEMPERATURE FAULT LIGHT
DS ₄	EE-1939	OVERSPEED FAULT LIGHT
DS ₅	EE-940	PANEL ILLUMINATION LIGHT
G ₂	EE-3211	ENGINE CONTROLLER
M ₁	G-7725	GAUGE, OIL PRESSURE
M ₂	G-7710	GAUGE, ENGINE COOLANT TEMPERATURE
M ₃	AM-39	AMMETER, (100-0-100) CHARGE RATE
S ₃	EE-181	SWITCH, (RUN-STOP-REMOTE)
S ₄	EE-151	SWITCH, PANEL LIGHT
TB ₁	EE-661	TERMINAL BLOCK, 3 POLE
K ₄	EE-1061-E	RELAY T.O.

IF 5698
1 of 3
pg. 2

SYMBOLS		MATERIAL		DO NOT SCALE
PARALLELISM	⊕ POSITION	DRAWN BY M.E.	PROJ ENG	MICROFILM DATE
○ ROUNDNESS	⊙ SYMMETRY	TOLERANCE ON DIMENSIONS NOT OTHERWISE SPECIFIED		
- STRAIGHT	⊙ CONCENTRICITY	DECIMAL ±		
□ FLATNESS	∠ ANGULARITY	FRACTIONAL ±		
⊥ PERPENDICULARITY		ANGULAR ±		

NOTES
1. ALL WIRING SHALL BE #16 AWG UNLESS NOTED OTHERWISE.
2. LOW FUEL LEVEL SWITCH (STARTER MOUNTED FUEL TANK): 1 LEVEL WILL STOP UNIT & SIGNAL

REV	DESCRIPTION	DATE	BY
A	ADDED K ₆	3-28-71	MAE
B	VIAS EE-1 201	4-6-81	MR



K UNLESS
STANDARD WITH
AT LOW
& HIGH TEMP

SW ₅	OFF
SW ₄	ON
SW ₃	OFF
SW ₂	OFF
SW ₁	OFF
PROGRAM SWITCHES	POSITION
G ₂ FACTORY SETTINGS	

SPARK IGNITED ENGINE

REF	PART NO	QTY	DESCRIPTION
PARTS LIST			
WINPOWER CORPORATION NEWTON, IOWA 50058			
TITLE WIRING DIAGRAM			
PART NO		REV C	
SCALE		DATE 9-6-85 SHEET 2 OF 3	

NOTICE: THIS DOCUMENT IS CONFIDENTIAL AND IS THE PROPERTY OF WINPOWER CORPORATION. IT NOT BE USED IN ANY WAY DETRIMENTAL TO OUR INTEREST. REPRODUCTION OF THIS CONTENT BY ANY MEANS OR IN ANY FORM WITHOUT EXPLICIT PERMISSION OF WINPOWER CORPORATION IS PROHIBITED.

ENGINE PARTS LIST

QTY	PART NO.	DESCRIPTION
1	SEE ENGINE MANUAL	START MOTOR W/ SOLENOID SWITCH
BT ₁	VARIOUS	BATTERY
E ₁	G-7710	SENDER, OIL PRESSURE
E ₂	G-7725	SENDER, ENGINE COOLANT TEMPERATURE
G ₁	SEE ENGINE MANUAL	BATTERY CHARGING ALTERNATOR
K ₁	EE-1287 (B)	START CONTACTOR
K	VARIOUS	FUEL SOLENOID
K ₂	EN-426	LOW FUEL SWITCH (SEE NOTE #2)
S ₁	DP-23	SWITCH, LOW OIL PRESSURE (CLOSED 0-15 PSI)
	WT-24-1	SWITCH, HIGH COOLANT TEMPERATURE (205°F)
	EN-1138	MAGNETIC PICK-UP
	G-7879	FLOODING DIODE ASSEMBLY
K ₄	SEE ENGINE MANUAL	IGNITION COIL
K ₅	SEE ENGINE MANUAL	CHOKE (GASOLINE MODELS)
S ₂	EN-2302	VACUUM SWITCH (GASEOUS FUEL MODELS)

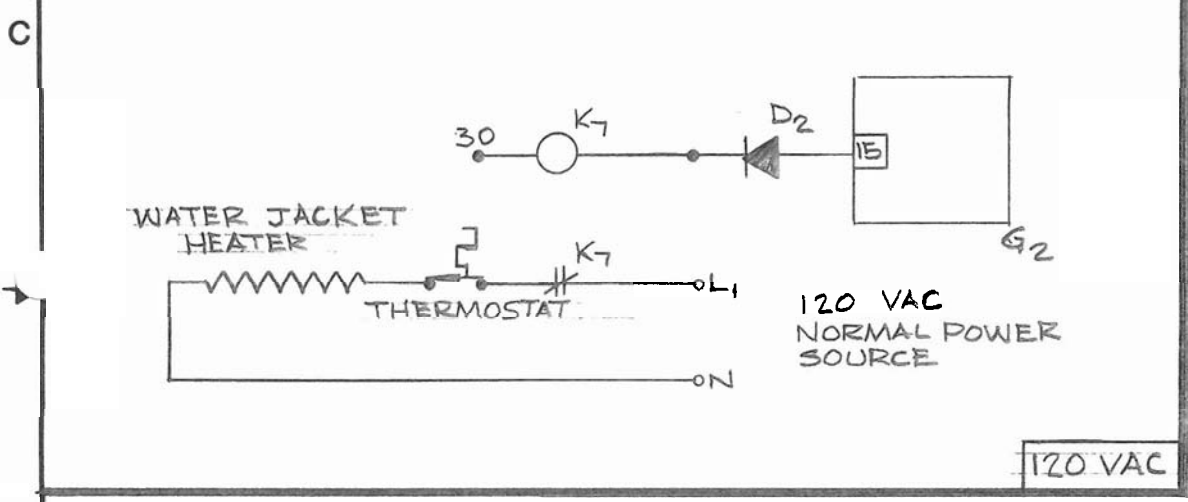
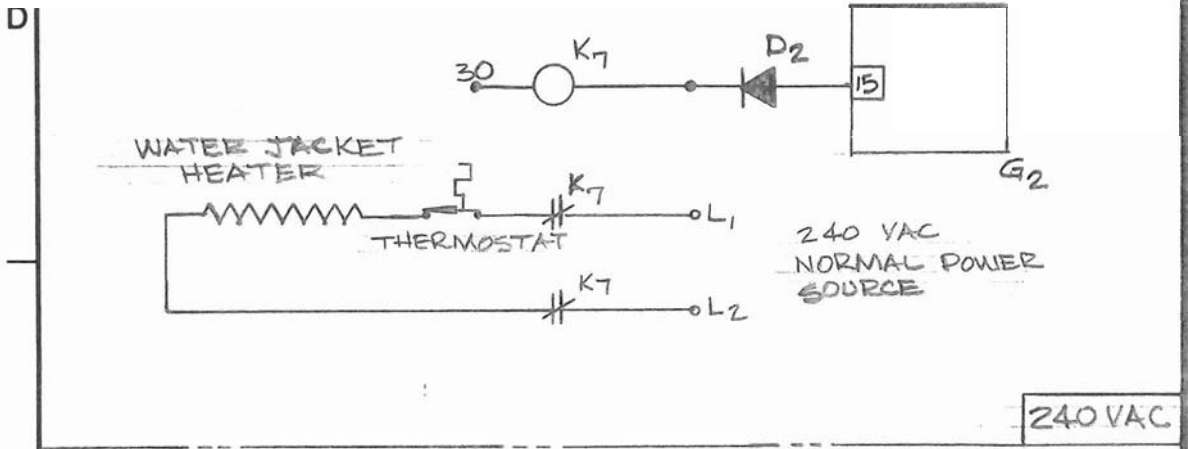
CONT. CABINET PARTS LIST

QTY	PART NO.	DESCRIPTION
		BLOCKING DIODE ASSEMBLY
DS ₁		OVER CRANK FAULT LIGHT
DS ₂		LOW OIL PRESSURE FAULT LIGHT
DS ₃	EE-1	HIGH COOLANT TEMPERATURE FAULT LIGHT
DS ₄	EE-1	OVERSPEED FAULT LIGHT
		PANEL ILLUMINATION LIGHT
	3211	ENGINE CONTROLLER
M ₁	G-7710	GAUGE, OIL PRESSURE
M ₂	G-7725	GAUGE, ENGINE COOLANT TEMPERATURE
M ₃	AM	AMMETER (100-0-100) CHARGE RATE
S ₃	EE-	SWITCH (RUN-STOP-REMOTE)
S ₄	EE-	SWITCH, PANEL LIGHT
TB ₁	EE-661	TERMINAL BLOCK, 3 POLE
K ₆	EE-1061-2	RELAY T.D.

SYMBOLS		MATERIAL		DONOT SCALE	
2 PARALLEL	POSITION	DRAWN BY	REV. ENG.	MICROFILM DATE	5 WIRING SHALL BE #16 AWG UNLESS OTHERWISE SPECIFIED. 2. LOW FUEL SWITCH (START) SIGNAL WILL LEVEL WILL
CONCENTRIC	BY	DATE			
PERPENDICULAR					

NOTICE: THIS DOCUMENT IS CONFIDENTIAL AND IS THE PROPERTY OF WINPOWER CORPORATION, NEWTON, IA. IT MUST NOT BE USED IN ANY WAY DETRIMENTAL TO OUR INTEREST. REPRODUCTION OF ITS CONTENT BY ANY MEANS OR IN ANY FORM WITHOUT EXPRESS PERMISSION OF THE WINPOWER MANAGEMENT IS PROHIBITED.

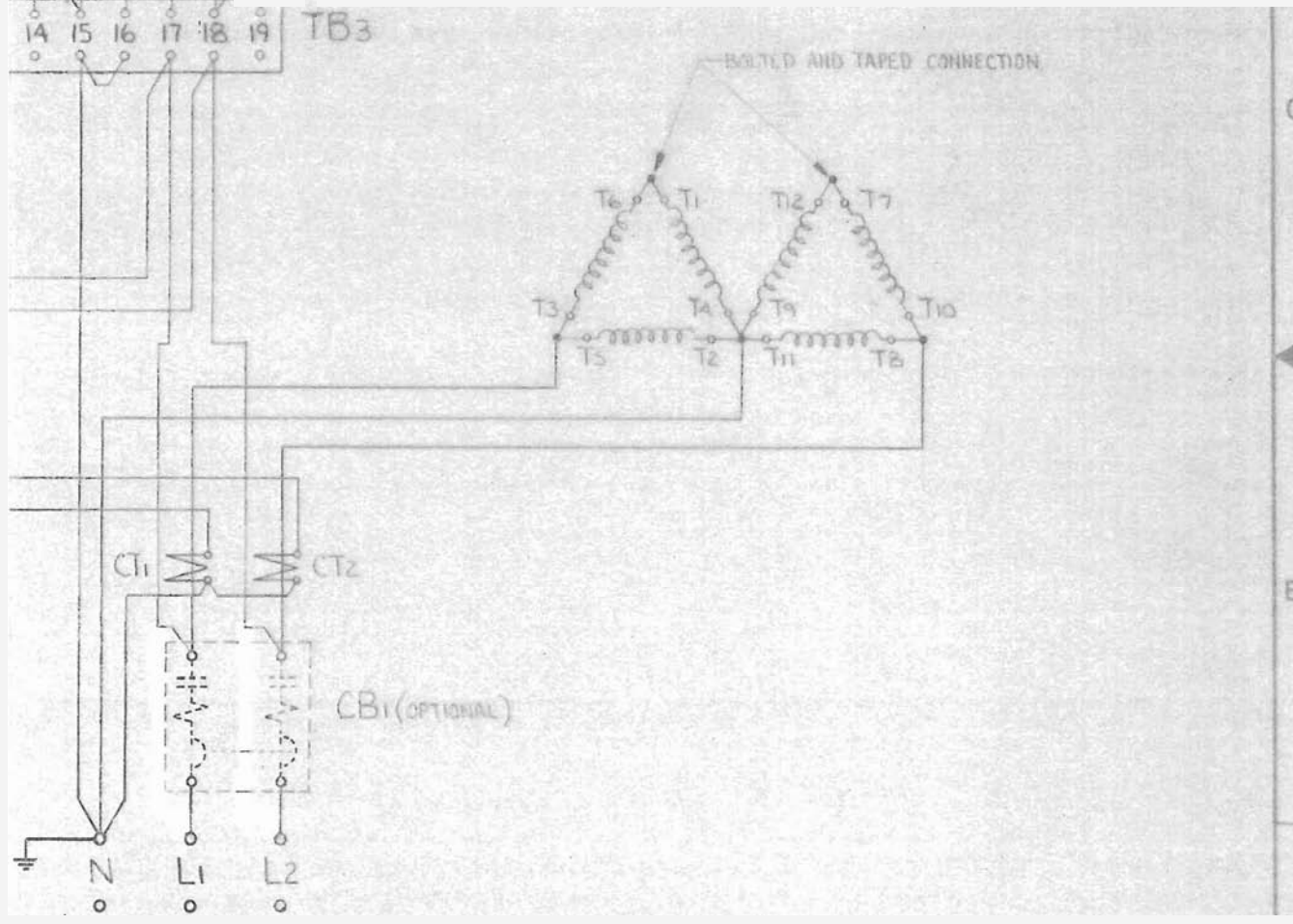
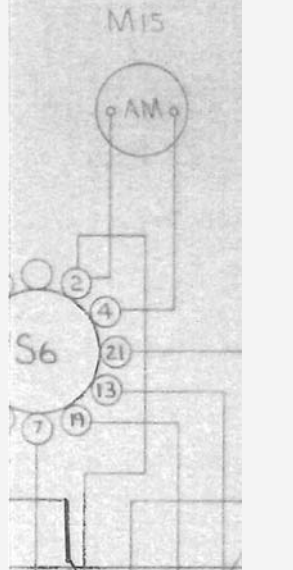
OPTIONAL ENGINE WATERJACKET HEATER



B

A

SYMBOLS		MATERIAL	DO NOT SCALE
PARALLELISM	⊕ POSITION	DRAWN BY: ME	PROJ ENG
○ ROUNDNESS	⊗ SYMMETRY		MICROFILM DATE
- STRAIGHT	◎ CONCENTRICITY	TOLERANCE ON DIMENSIONS NOT OTHERWISE SPECIFIED	
▭ FLATNESS	∠ ANGULARITY	DECIMAL ±	
⊥ PERPENDICULARITY		FRACTIONAL ±	
		ANGULAR ±	



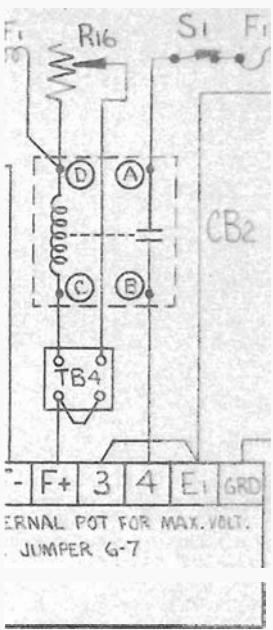
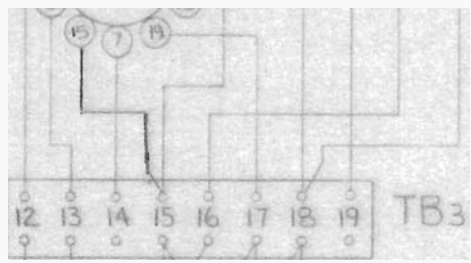
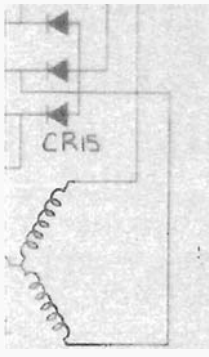
D BY KW-RATING							
5	45	55	60	75	90	100	110
-3	CT-7	CT-5	CT-6	CT-2	CT-2	CT-16	CT-16
11	-12	-13	-14	-15	-15	-16	-16
EE-2801-5	EE-1887-6 200 A	EE-1887-6 250 A	EE-1887-6 250 A	EE-1887-7 300 A	EE-1887-9 400 A	EE-1887-10 450 A	EE-1887-11 500 A

120/240 VOLT 1 ϕ 3 WIRE

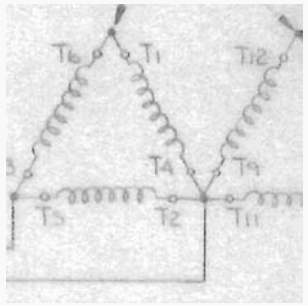
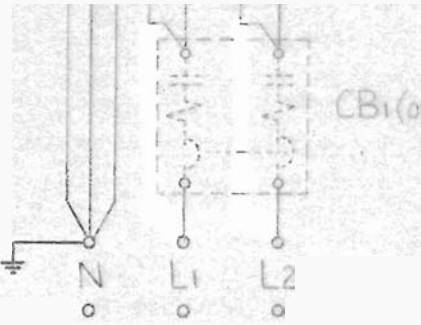
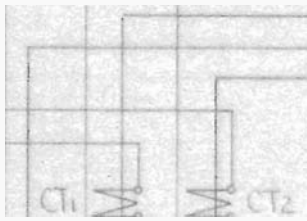
REF	PART NO.	QTY	DESCRIPTION
PARTS LIST			
WINPOWER CORPORATION NEWTON, IOWA 50208			
TITLE WIRING DIAGRAM (AC)			
PART NO. IF-5699-4			SIZE C
ASSY BULD NO.	SCALE	DATE 28 DEC 84	SHEET

pg. 1

IF-5699-4



RESISTOR R16 SO THAT
 BAKER COIL SEES 0.75
 AT RATED LOAD.



pg. 2
IF 5699-4

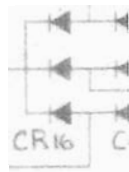
PART NO.		REPLIFD		E1		E2		E3		E4		E5		E6		E7		E8		E9		E10	
15	20	25	30	35	40	45	50	55	60	65	70	75	80	85	90	95	100	105	110	115	120	125	
EE-1887-1	EE-1887-2	EE-1887-3	EE-1887-4	EE-1887-5	EE-1887-6	EE-1887-7	EE-1887-8	EE-1887-9	EE-1887-10	EE-1887-11	EE-1887-12	EE-1887-13	EE-1887-14	EE-1887-15	EE-1887-16	EE-1887-17	EE-1887-18	EE-1887-19	EE-1887-20	EE-1887-21	EE-1887-22	EE-1887-23	
70 A	50 A	125 A	150 A	200 A	250 A	300 A	400 A	450 A	500 A	500 A	500 A	500 A	500 A	500 A	500 A	500 A	500 A	500 A	500 A	500 A	500 A	500 A	

12/20

WIRING
 PART NO. IF
 ASSY BULD NO.
 SCALE

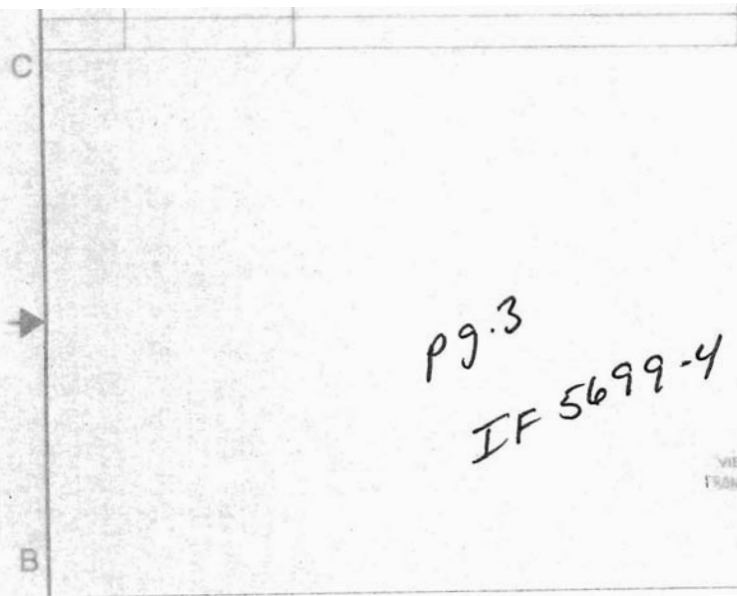
NOTICE: THIS DOCUMENT IS CONFIDENTIAL AND IS THE PROPERTY OF WINPOWER CORPORATION, NEWTON, IA. IT MUST NOT BE USED IN ANY WAY DETRIMENTAL TO OUR INTEREST. REPRODUCTION OF ITS CONTENT BY ANY MEANS OR IN ANY FORM WITHOUT EXPRESS PERMISSION OF THE WINPOWER MANAGEMENT IS PROHIBITED.

REF	PART NO	DESCRIPTION
CB1	SEE CHART	MAIN LINE CIRCUIT BREAKER - 2 POLE
CB2	EE-2818	FIELD BREAKER
CR15	EE-3105	RECTIFIER - FORWARD
CR16	EE-3106	RECTIFIER - REVERSE
CT1, CT2	SEE CHART	CURRENT TRANSFORMER
F1	EE-445-2	FUSE - 3 AMP - VOLTAGE REGULATOR
M14	VM-69-1	VOLTMETER - 0-300

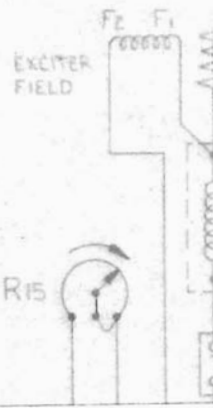


15	EE
14	EE
13	EE

SWITCH	EE-3105
TERMINAL BOARD	EE-3106
TERMINAL BOARD	EE-3107
VOLTAGE REGULATOR	EE-3108



EXCITER ARMATURE



VIEWED FROM FRONT