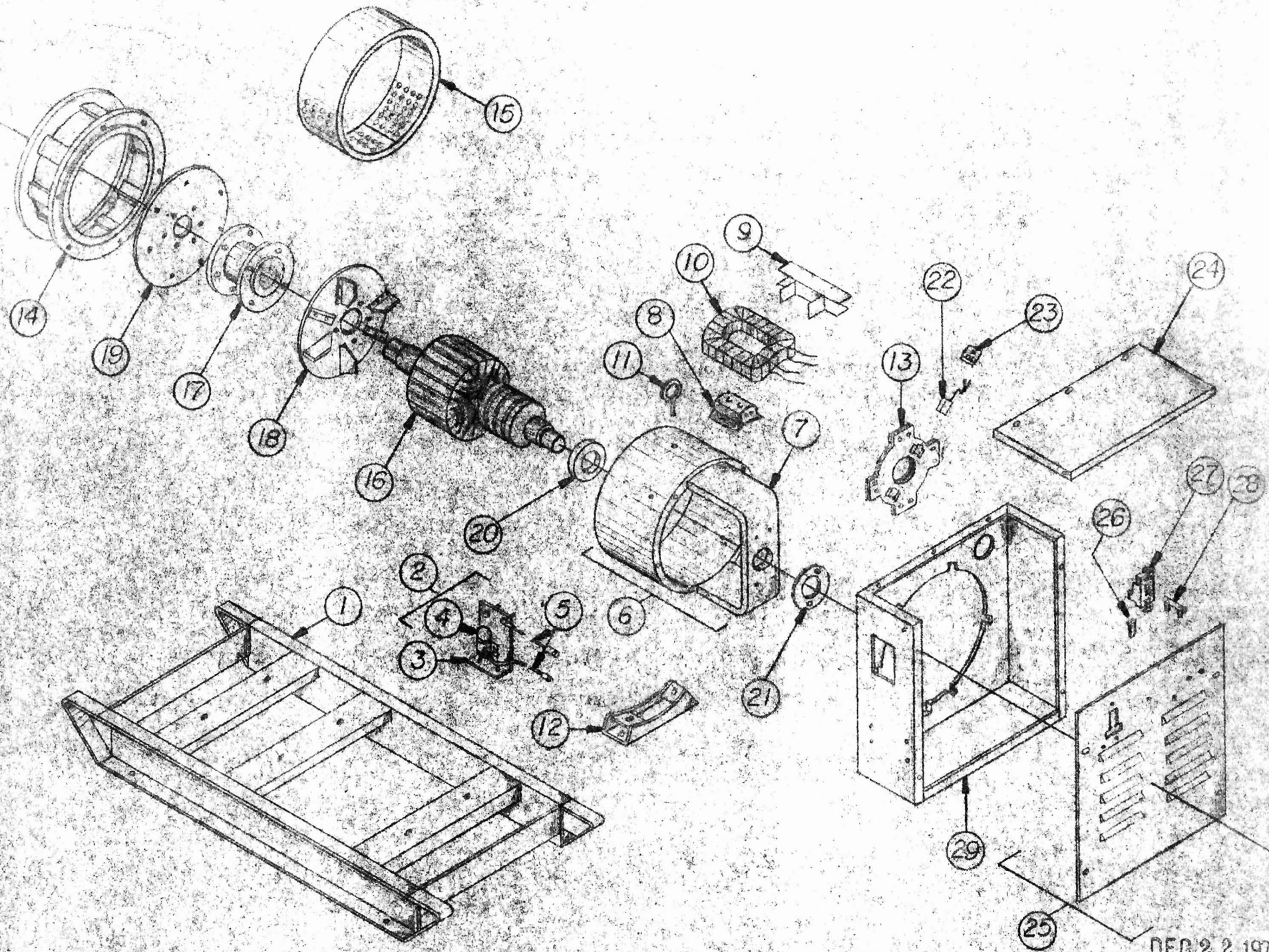


PARTS LIST (CONT'D)
DR20H4, 50 Hz.

<u>REF. NO.</u>	<u>PART NO.</u>	<u>DESCRIPTION</u>	<u>REQUIRED</u>
24	I-881	Bearing Housing	1
	3580-2	Screw 3/8-16 x 1-1/4 Gr. #5	6
25	S-5872-1	Bracket	1
	3662	Screw 1/2-13 x 1 H.H.	2
	1146	Washer 1/2 Split Lock	2
26	S-6076	Angle Bracket	1
	3605	Screw 7/16-14 x 7/8 H.H.	2
	1145	Washer 7/16 Split Lock	2
	3524	Screw 1/4-20 x 3/4 H.H.	2
	5805	Locknut 1/4-20 H.H.	2
27	EE-1201	Start Contactor	1
	3524	Screw 1/4-20 x 3/4	2
	5805	Locknut 1/4-20 H.H.	2
28	3547-1	Screw 5/16-18 x 1-1/4 Brass	2
29	J-592	Washer - Nylon	1
30	J-593	Washer - 5/16 Nylon Shoulder	1
31	Z-283	Nameplate - Positive Battery	1
32	Z-284	Nameplate - Negative Battery	1
	1034	Washer 5/16 Flat Brass	6
	4710	Nut 5/16-18 Hx Brass	4
	1115	Washer 5/16 Int. T.	6
33	OP-23	Oil Pressure Switch	1
34	WT-22	Water Temperature Sender	1
35	OP-22	Oil Pressure Sender	1
36	WT-23	Water Temperature Switch	1
37	EN-18.74	Bushing	1
38	EN-18.2	Bushing	1
39	EE-267	Overspeed Device	1
40	G-5895	Fan Guard	2
41			
42	S-7013	Radiator Brace	2
	S-7011	Engine Bracket	1
	S-7012	Brace	2
43	Z-2140	Nameplate	1

Model Wiring Diagram

DR20H4-C	F-4628-4
DR20H4-P	F-4628-6
DR20H4-D	F-4628-2
DR20H4-J	F-4628-5
DR20H4-T	F-4628-5
DR20H4-N	F-4628-3
DR20H4-L	F-4628-3



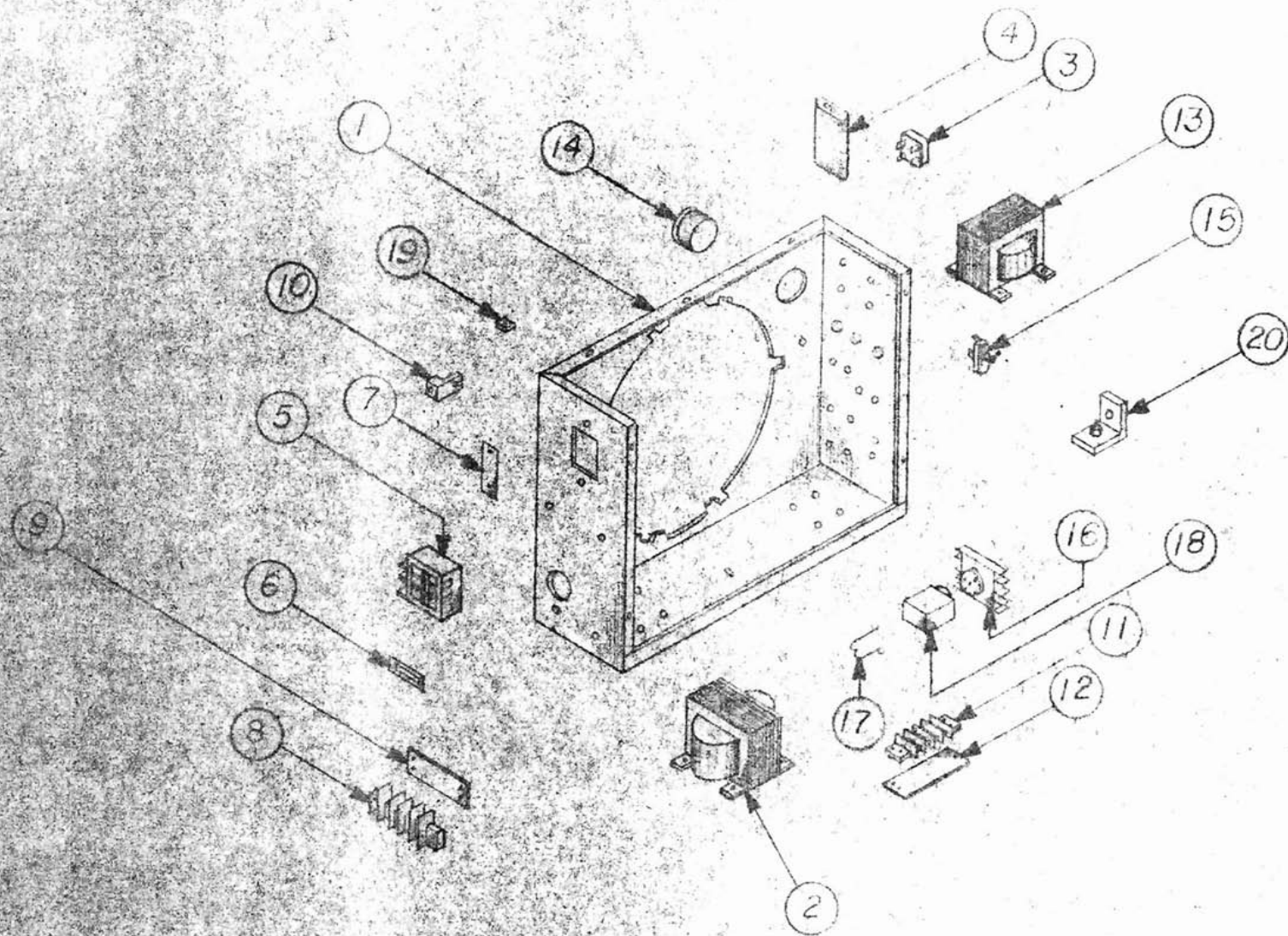
DEC 22 1976

E-8579-1

PARTS LIST
 PANEL BACK ASSY
 G-5228-71 (DR20D4-D)
 G-5228-72 (DR20D4-J)
 G-5228-73 (DR20D4-C)

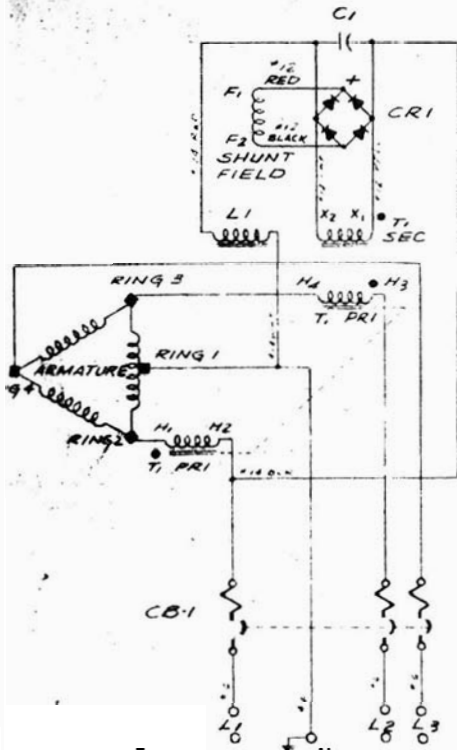
<u>REF. NO.</u>	<u>PART NO.</u>	<u>PART DESCRIPTION</u>	<u>REQ'D/UNIT</u>
1	G-5838-13	Panel Back	1
2	EE-1979	Transformer	1
2	EE-1999	Transformer (DR20D4-C)	1
3	EE-2171	Rectifier Assembly	2
4	EE-1539	Capacitor	1
5	EE-1818	Circuit Breaker (DR20D4-C)	1
5	EE-848	Circuit Breaker (DR20D4-J)(DR20D4-D)	1
6	EE-779	Filler (DR20D4-C)	1
7	S-5027-1	Mounting Plate	1
8	EE-658	Terminal Board	1
9	EE-658-1	Marker Strip	1
10	EE-1671	Lug	1
11	EE-654	Terminal Board	1
12	EE-654-1	Marker Strip	1
13	EE-1980	Choke	1
13	EE-1982-1	Choke (DR20D4-C)	1
14	AM-100	Ammeter, Battery Charger	1
15	EE-151	Switch, Start-Stop	1
16	EE-1207-1	Relay Base	1
17	EE-1207-2	Hold Down Spring	1
18	EE-1207-3	Relay	1
19	4957	Tinnerman	7
20	G-5183-1	Rectifier Assy	1

Wiring Diagram C-6660
 Parts Diagram E-8563-1



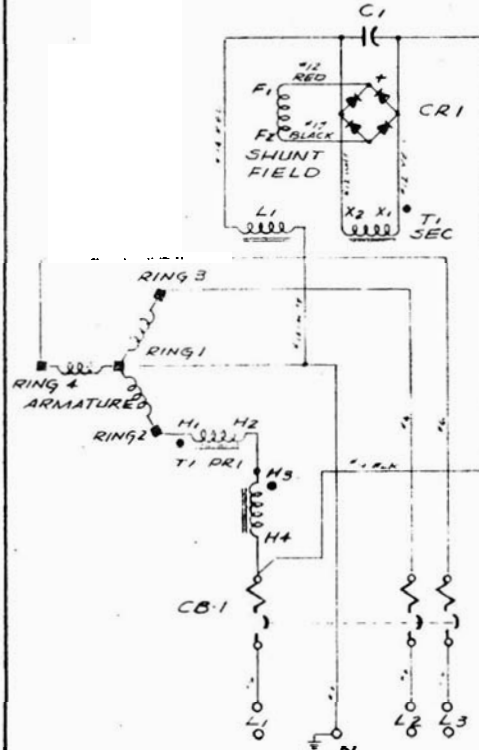
DEC 22 1976

A.C. GENERATOR
120/240V. 3-PH. DELTA



IMPORTANT!
ANGLE PHASE LOADS MUST BE
TAKEN FROM N, L1, & L2
- L2 = 240 VOLTS
- N = 120 VOLTS
- N = 120 VOLTS
CAUTION! VOLTAGE FROM N-L3 = 200V.

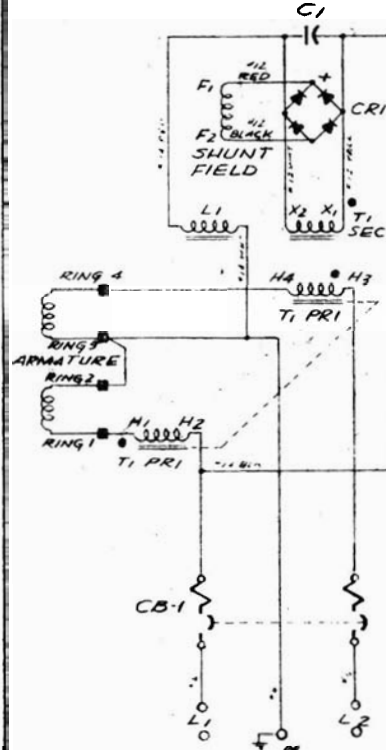
A.C. GENERATOR
120/208V. 3-PH. WYE



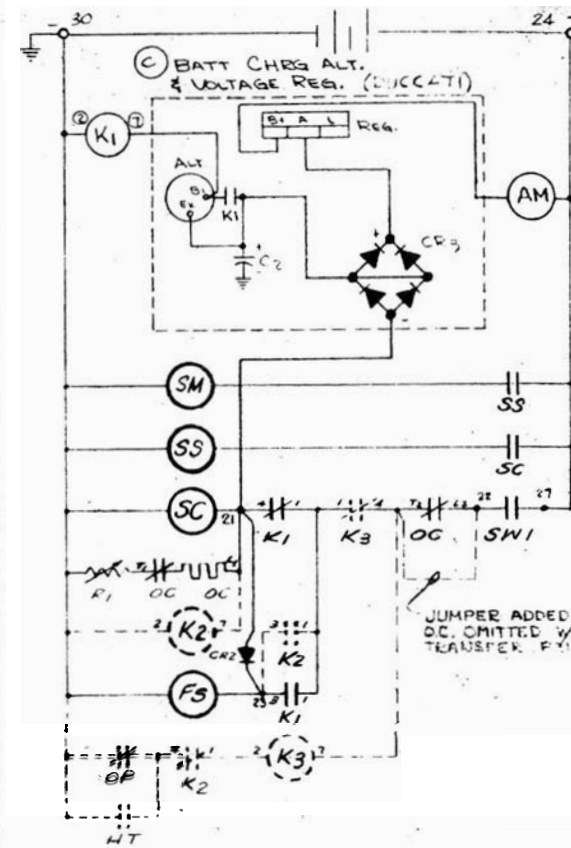
PERMANENT ENGINEERING RECORD
DO NOT DESTROY THIS COPY

ALL STRUCTURE HAS BEEN
DELETED FROM COMPUTER
MEMORY. THIS IS THE ONLY
RECORD
CHANGE NOTICE NUMBER _____
Date _____ BY WHOM _____
WINPOWER CORPORATION, NEWTON, IA
DEC 1 1978 W-252

A.C. GENERATOR
120/240V. 1-PHASE



DIESEL ENGINE CONT



CR2 BLOCKING DIODE ASSY

SWITCH LEGEND (SV)

RUN X -
STOP - -

CIRCUIT DIAGRAM

SCALE ~ MODEL NO. DR20
DATE 7-26-74 PART NO. IC-6
DWN. T.C.G. CHK'D.

WINPOWER MFG. CO.
NEWTON, IOWA

REV.	WHY ORIGINALLY	DATE	CHK'D	CHG. REQUEST	NO. REQ'D.	MICROFILM DATA
C	BOSCH DAT. CHECK.	11-15-77	SF			
B	REVISED	8-21-75	SF			
A	ADDED BATTERY RELAY	10-1-74	T.C.G.			
1	ISSUED					

CLEARANCE ON DIMENSIONS NOT OTHERWISE SPECIFIED

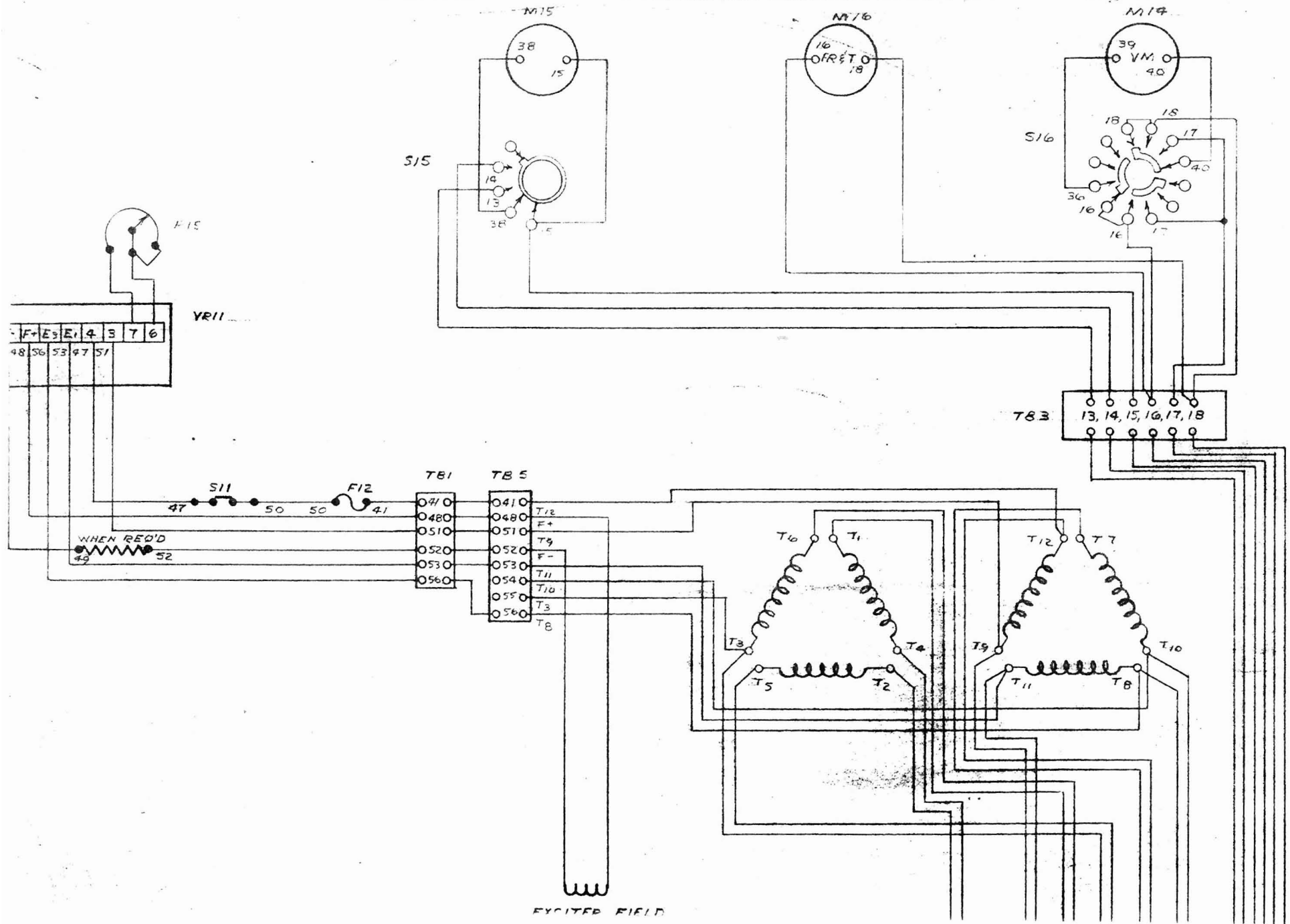
DECIMAL ±
FRACTIONAL ±
ANGULAR ±

REMOVE ALL BURRS
BREAK ALL SHARP MACHINED EDGES

MATERIAL

- LEGEND
- C1,2 CAPACITOR
 - CB1 CIRCUIT BREAKER
 - CR1,2 RECTIFIER ASSY
 - FS FUEL SOLENOID
 - HT HIGH TEMP SHUTDOWN (OPT)
 - K1 CRANKING RELAY
 - K2 CONTROL RELAY
 - K3 SAFETY DEVICE RELAY
 - OC OVERCRANKING CUTOUT (OMIT W/ AUTO. TRANSFER PANEL)
 - OP OIL PRESSURE (LOW) SHUTDOWN (OPT)
 - R1 RESISTOR
 - SC START CONTACTOR
 - SM STARTER MOTOR
 - SS START MOTOR SOLENOID
 - SW1 START SWITCH
 - T1 VOLTAGE TRANSFORMER
 - AM AMMETER

FOR UNIT MADE BEFORE 12/1/75 IC-EG-60



REF
CR1
CR2
F12
M14
M15
M16
R15
S11
S15
S16
T12
TB1
TB5
VR1

4628-4

