

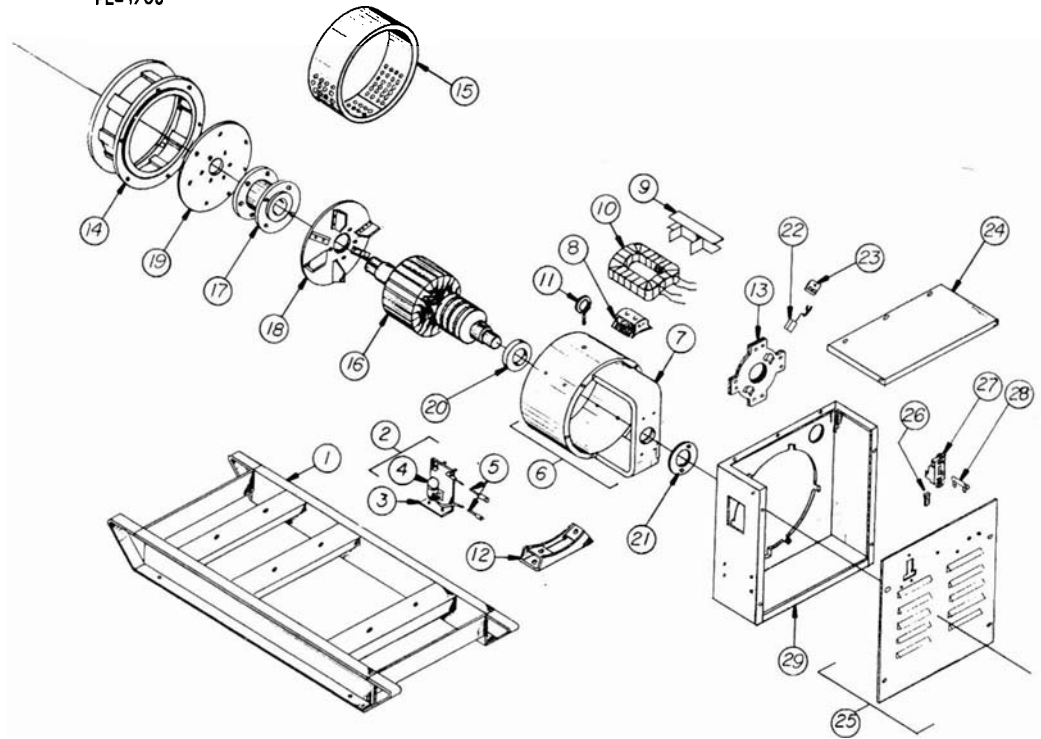
REF. NO.	PART NO.	PART DESCRIPTION	REQ'D/UNIT
Not Shown	EC-50104	Engine - American VM SU-103	1
1	G-6309	Skid	1
2	G-9135	Start Contactor Assembly	1
3	S-5859	Bracket	1
4	EE-1201	Solenoid	1
5	EN-7 47	Battery Cable	2
6	G-5432-23	Field Frame Assembly	1
7	G-5431-1	Field Frame	1
8	G-5037	Field Pole Assembly	4
9	J-635	Coil Shield	8
10	H-1094	Field Coil	Set of 4
11	S-859	Lift Ring	1
12	G-5225	Generator Support	1
13	G-6430	Brush Gear Assembly	1
14	I-841	Engine Adapter	1
15	G-5036-1	Cover Engine Adapter	1
16	G-5370-4	Armature Assembly	1
17	I-826	Coupling Hub	1
18	G-2313-6	Fan Assembly	1
19	S-6419	Coupling Disc	5
20	D-8	Bearing	1
21	W-43	Bearing Retainer	1
22	Y-51	Brush	12
23	G-3422	Brush Spring	12
24	S-6927-1	Panel Top	1
25	G-5440-8	Overcrank Panel Assembly	1
26	EE-1812-5	Heater	1
27	EE-1811	Switch	1
28	R-52	Resistor	1
29	G-5228-73	Panel Back Assembly	1
	IE-8579-1	Parts Drawing	



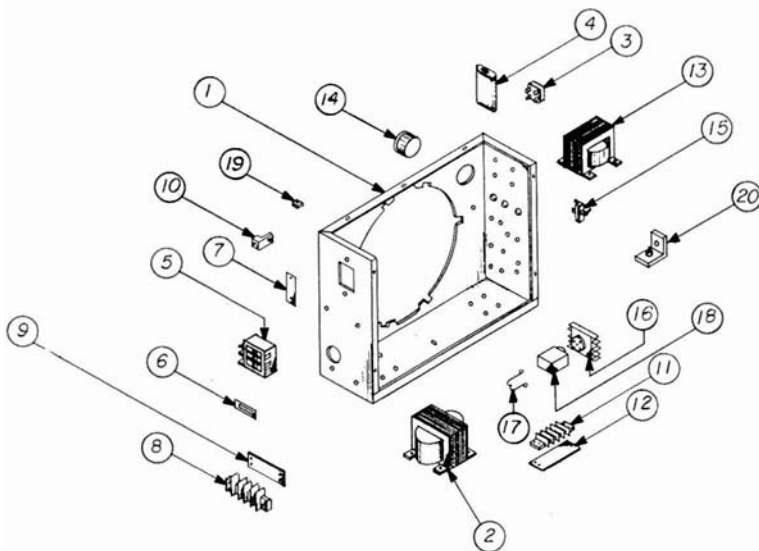
WINPOWER CORPORATION

Model DR20D4-C Type 1
 20KW 25KVA .8 P.F. 130°C Rise
 Single Phase 60HZ 3 Wire
 Wiring Diagram IC-6660
 Released 12/1/76

PL-1703



E-8579-1

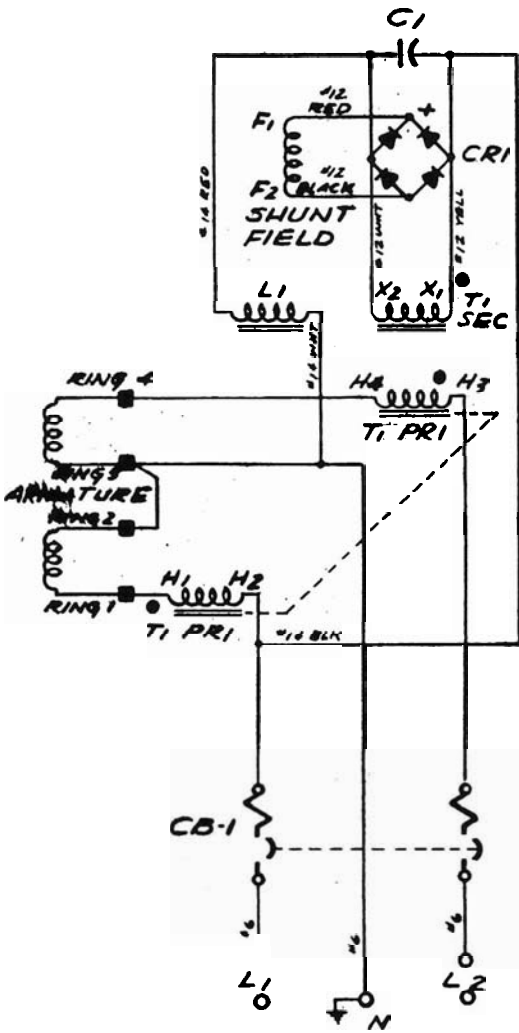


E-8563-1

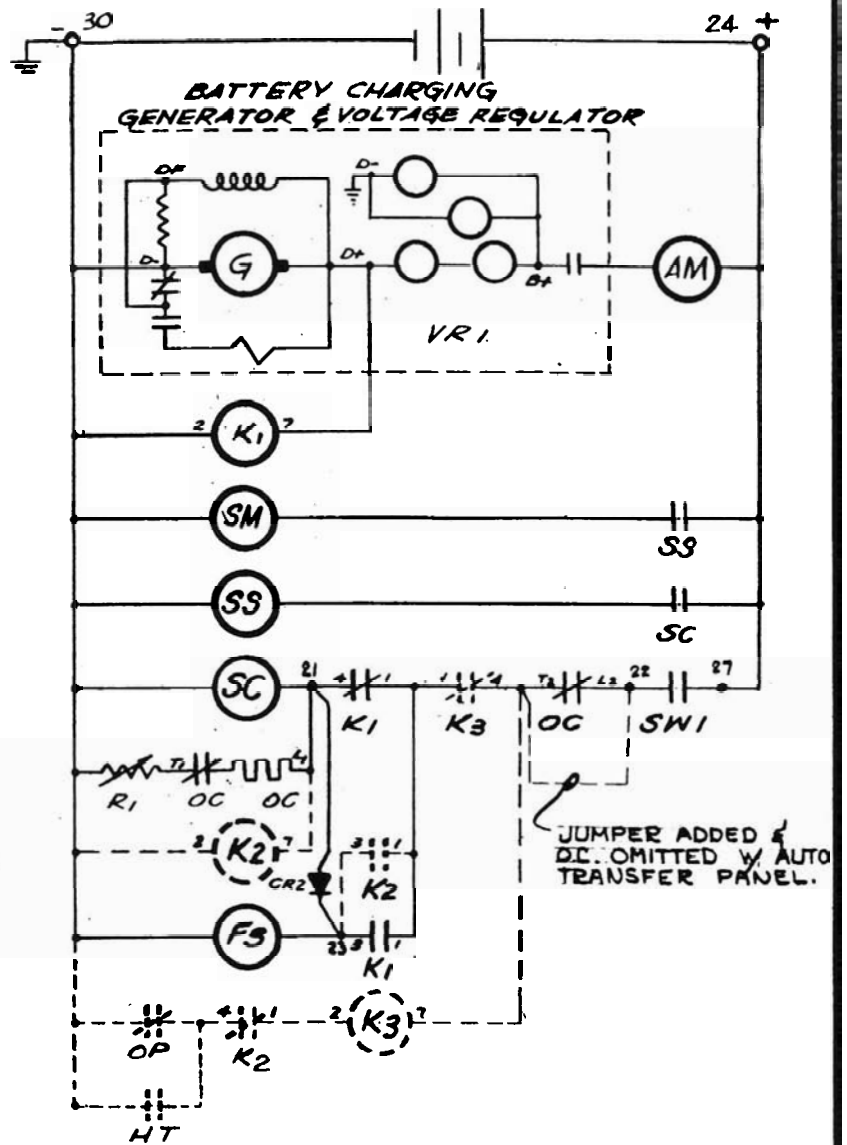
REF. NO.	PART NO.	PART DESCRIPTION	REQ'D/UNIT
1	G-5838-13	Panel Back	1
2	EE-1999	Transformer	1
3	EE-2171	Rectifier Assembly	
4	EE-1539	Capacitor	
5	EE-1818	Circuit Breaker	
6	EE-779	Filler	
7	S-5027-1	Mounting Plate	
8	EE-658	Terminal Board	
9	EE-658-1	Marker Strip	
10	EE-1671	Lug	
11	EE-654	Terminal Board	
12	EE-654-1	Marker Strip	
13	EE-1982-1	Choke	
14	AM-100	Ammeter, Battery Charger	
15	EE-151	Switch, Start-Stop	
16	EE-1207-1	Relay Base	1
17	EE-1207-2	Hold Down Spring	1
18	EE-1207-3	Relay	1
19	4957	Tinnerman	7
20	G-5183-1	Rectifier Assy	1
	IC-6660	Wiring Diagram	
	IE-8563-1	Parts Diagram	

PL-1703

A.C. GENERATOR 120/240V. 1-PHASE



D.C. CIRCUIT DIESEL ENGINE CONTROL



LEGEND

- C1 CAPACITOR
- CB1 CIRCUIT BREAKER
- CR1 RECTIFIER ASSY
- FS FUEL SOLENOID
- HT HIGH TEMP. SHUTDOWN (OPT)
- K1 CRANKING RELAY
- K3 SAFETY DEVICE RELAY
- OC OVERCRANKING CUTOUT (OMIT W/ AUTO. TRANSFER PANEL)
- OP OIL PRESSURE (LOW) SHUTDOWN (OPT)
- R1 RESISTOR
- SC START CONTACTOR
- SM STARTER MOTOR
- SS START MOTOR SOLENOID
- SW1 START SWITCH
- T1 VOLTAGE REG. TRANSFORMER
- AM AMMETER BATT. CHRG.

CR2 BLOCKING DIODE ASSY

SWITCH LEGEND (SW1)

RUN X —
STOP — —

CIRCUIT DIAGRAM

SCALE ~	MODEL NO. DR2004-
DATE 7-26-74	PART NO. Z-2406
DWN T.C.G.	CHK'D

WINPOWER MFG. CO.
NEWTON, IOWA

C-6660