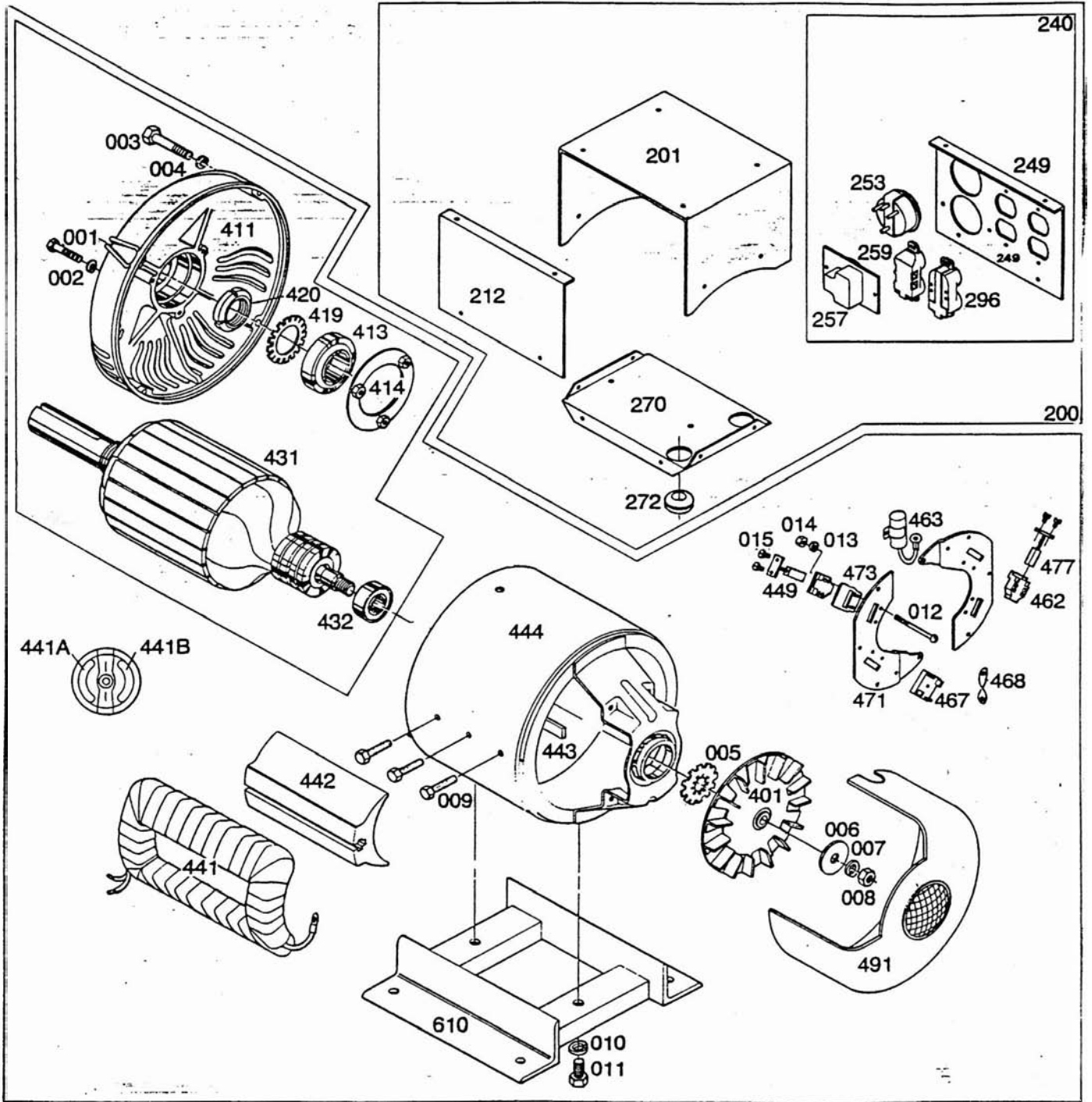
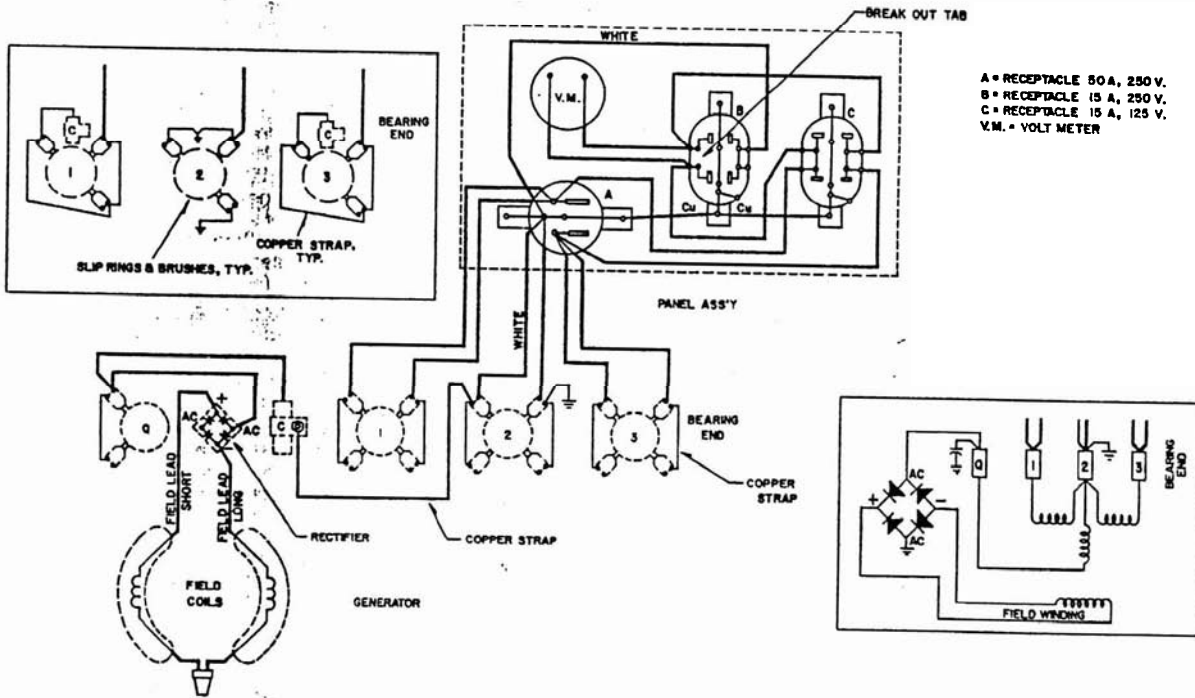


8KS2GC-3





| Ref. No. | Part No. | Qty. | Description |
|----------|------------------|------|-----------------------------------|
| 001 | 20544 | 3 | Screw - 1/4-20 x 1-3/4 |
| 002 | 479 | 3 | Lockwasher - 1/4 split |
| 003 | 51101 | 4 | Machine screw - 5/16-18 x 2-3/4 |
| 004 | 480 | 4 | Lockwasher - 5/16 split |
| 005 | 40552 | 1 | Lockwasher - 11/16 int. |
| 006 | 21867 | 1 | Washer - 1/2 flat |
| 007 | 20039 | 1 | Lockwasher - 1/2 ext. |
| 008 | 9549 | 1 | Nut - 1/2-20 x 3/8 |
| 009 | 91658-4 | 6 | Capscrew - 3/8-16 x 1-3/4 |
| 010 | 636 | 2 | Lockwasher - 1/2 split |
| 011 | 48178 | 2 | Capscrew - 1/2-13 x 1 |
| 012 | 10888 | 6 | Machine screw - #8-32 x 2-1/2 |
| 013 | 6376 | 6 | Lockwasher - #8 split |
| 014 | 5113 | 6 | Nut - #8-32 |
| 015 | 40746 | 22 | Machine screw - #8-32 x 5/16 |
| 200 | 61382 -004 | 1 | Control box assy. (complete) |
| 201 | 60940 | 1 | Cover |
| 212 | 60938 | 1 | Rear panel |
| 240 | 61380 | 1 | Front panel assembly |
| 249 | 60937 | 1 | Front panel only |
| 253 | 52490 | 1 | Voltmeter |
| 257 | 57325 | 1 | Receptacle - 250V/ 50 amp (X-50R) |
| 259 | 24749 | 1 | Receptacle - 120V/ 15 amp (5-15R) |
| 270 | 60939 | 1 | Saddle |
| 272 | 23917 | 1 | Grommet |
| 296 | 40452 | 1 | Receptacle - 250V/ 15 amp (6-15R) |
| 401 | 23404 | 1 | Fan assembly |
| 411 | 51046-1 | 1 | End bracket |
| 413 | 46913 | 1 | Bearing |
| 414 | 50536 | 1 | Retainer plate |
| 419 | 50531 | 1 | Lockwasher |
| 420 | 50532 | 1 | Lock nut |
| 431 | 60980 | 1 | Armature assembly — less bearings |
| 432 | 50215 | 1 | Bearing |
| 441 | — | | See 441A and 441B |
| 441A | 60852 | 1 | Field coil |
| 441B | 60852-1 | 1 | Field coil |
| 442 | 42882 | 2 | Pole shoe |
| 443 | 42883 | 2 | Pole shoe retainer |
| 444 | 60989 | 1 | Field shell and brkt. |
| 449 | 53949 | 2 | Brush "O" (1/4 x 3/8) |
| 462 | 59690 | 11 | Brush holder A.C. |
| 463 | 41221 | 3 | Capacitor A.C. |
| 467 | 91452 | 1 | Rectifier |
| 468 | 41387-6 | 3 | Ground strap - copper |
| 473 | 59688 | 11 | Barrier spacer |
| 471 | 56960 | 2 | Brush plate (bare) |
| 477 | 53636 | 9 | Brush A.C. (1/4 x 3/8) |
| 491 | 55007 | 1 | End cover |
| 610 | 51147 | 1 | Base assembly |

Slip rings (2) 41010 (2 on each set)
 55536-000 Need 4 total