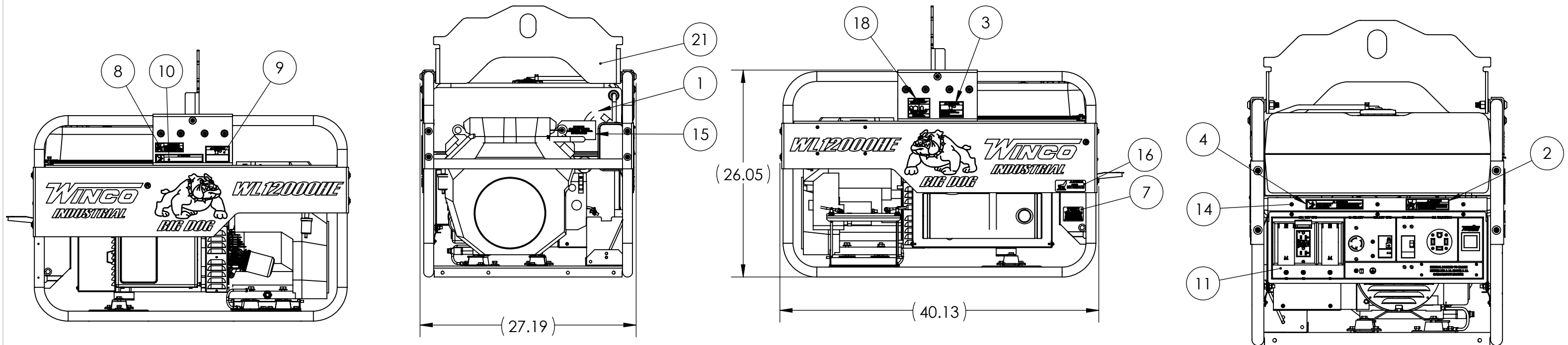
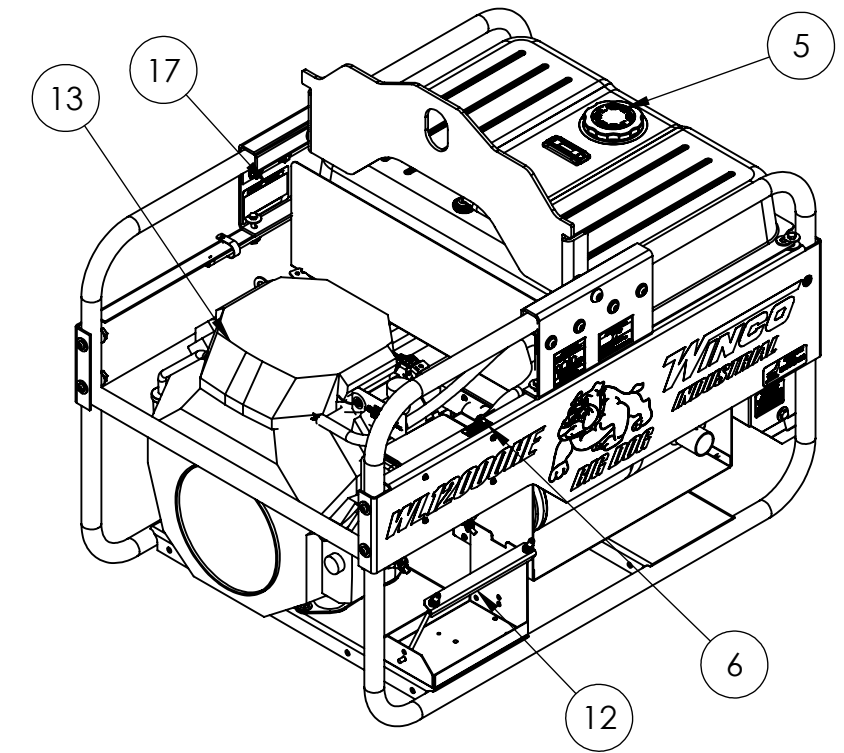


24012-014

ITEM NO.	PART NUMBER	DESCRIPTION	QTY.
1	15163-070	FUEL TANK INSTALLATION	1
2	15209-001	GASOLINE DECAL	1
3	15209-002	DECAL-DANGER CARBON MONOXIDE	1
4	15209-003	UL-DECAL ELECTRICAL SHOCK CAN KILL	1
5	15209-013	DECAL - FUEL TYPE GASOLINE	1
6	15209-014	DECAL - CHECK OIL	1
7	15209-036	PROP 65 WARNING DECAL	1
8	15209-101	DECAL, GASOLINE DANGER, FRENCH	1
9	15209-102	DECAL-DANGER CARBON MONOXIDE	1
10	15209-103	UL-DECAL ELECTRICAL SHOCK CAN KILL	1
11	15457-090	RECEPTACLE ASSEMBLY	1
12	16175-022	BATTERY INSTALLATION	1
13	18000-000	ENGINE GENERATOR AND CRADLE	1
14	21698-001	TORX PAN HEAD SCREW #10	5
15	60710-018	OIL WARNING TAG	1
16	63941-001	DECAL -HOT SURFACES	1
17	63966-004	NAMEPLATE, WINCO PORTABLE	1
18	64918-000	DECAL-DANGER (CO) USE OUTSIDE	1
19	100047-742	CARTON	1
20	100114-705	PALLET	1
21	300144-14	LIFTING EYE ASSEMBLY	1
22	300515-2	10W-30 OIL	1.5 QTS
23	OPM-139	OPERATION MANUAL	1
24	100054-514	BAG 54 X 52 X 60	1
25	15209-023	DECAL - INSPECT SHIPMENT	1
26	15209-024	DECAL - WARNING DO NOT STACK	1
27	16505-021	LABEL	1

REVISIONS					
REV.	IRN	DESCRIPTION	DATE	BY	APP'D
A	P325	ORIGINAL	8/27/2019	SJM	



NOTES:

- DECALS 15209-001, 15209-002, & 15209-003 ARE PART OF DECAL SET 15209-000.
- DECALS 15209-101, 15209-102, & 15209-103 ARE PART OF DECAL SET 15209-100.
- APPROXIMATE WEIGHT: 420 LBS.

<p>THIS DRAWING CONTAINS PROPRIETARY INFORMATION BELONGING TO WINCO. UNAUTHORIZED USE IS PROHIBITED.</p> <p>ALL DIMENSIONS INCH</p>	DRAWN BY	DATE	CHK'D BY	DATE	ENG APPR.	DATE
	SJM	8/27/2019				
	TOLERANCE:	+/- 0.0625 DECIMAL		+/- 1 DEG ANGULAR		TITLE: WL12000HE COMPLETE ASSEMBLY
	MODEL:	WL12000				PART: 24012-014

