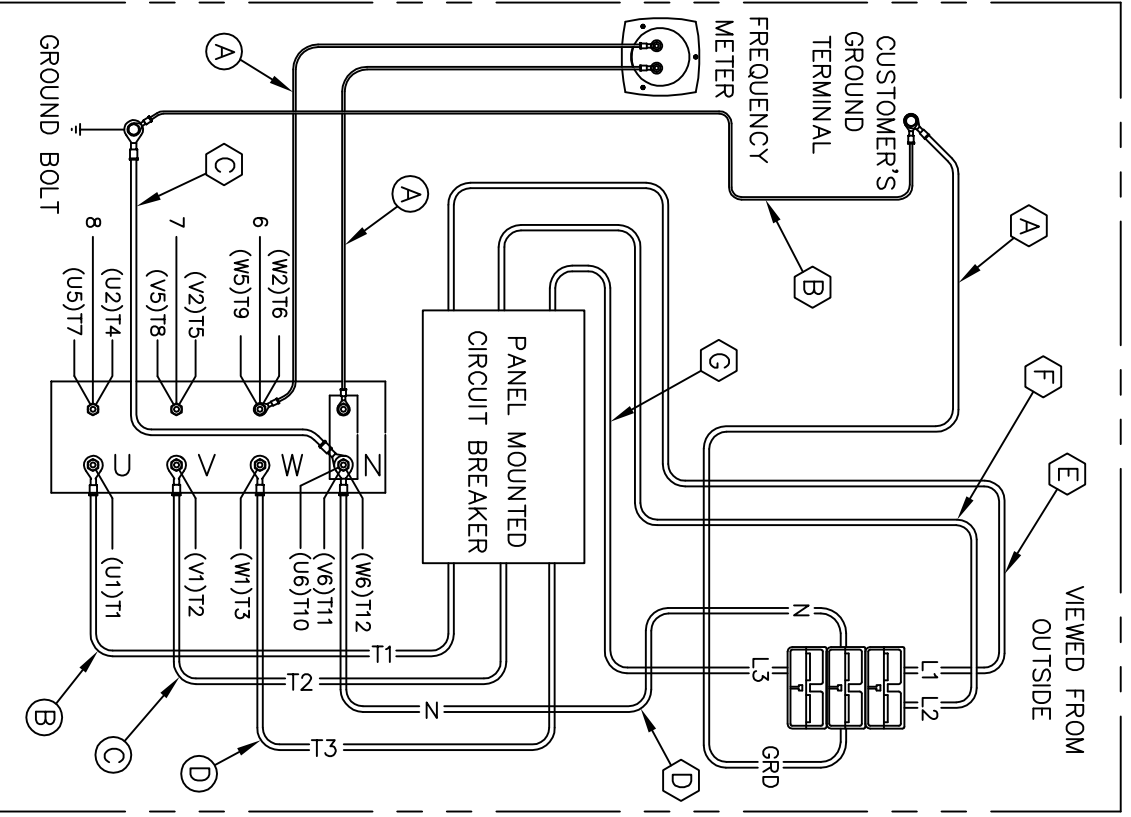


- NOTES:
- LETTERS IN HEXIGONS (A) ARE I.D. OF LEADS FROM RECEPTACLE PANEL ASSEMBLY B-300113-11.
 - LETTERS IN CIRCLES (A) ARE I.D. OF LEADS FROM CIRCUIT BREAKER PANEL ASSEMBLY B-300101-15.



WIRING DIAGRAM (THREE PHASE WYE "12 WIRE"; 277/480)

28	6372-000	4	NUT
27	64914-000	16	M6 RETAINER NUT
26	1744-000	4	1/2-13 HEXNUT (SHIPPING)
25	21867-000	4	1/2 FLATWASHER (SHIPPING)
24	61603-005	4	1/2-13 X 2-1/2 CARRIAGE BOLT (SHIPPING)
23	91861-004	1	PLUG KIT (SHIPPED LOOSE)
22	60706-160	1	OPERATOR'S MANUAL
21	64894-007	1	DECAL AND NAMEPLATE INSTALLATION
20	300113-11	1	RECEPTACLE PANEL ASSEMBLY
19	300101-19	1	MAIN LINE BREAKER PANEL ASSEMBLY
18	16249-000	4	5/16-18 HEX FLANGENUT
17	526-000	4	5/16 FLAT WASHER
16	465-000	4	5/16-18 X 7/8 HEX HEAD BOLT
15	S-7606	1	PTO SHAFT GUARD
14	484-000	4	# 10 SPLIT LOCKWASHER
13	456-000	4	#10-24 HEX NUT
12	52464-002	4	#10-32 X 1-1/2 ROUND HEAD SCREW
11	300105	1	LOWER SHAFT GUARD
10	91658-015	4	3/8-16 X 4 HEX HEAD BOLT
9	62825-004	8	SPACER
8	300104	1	PTO SHAFT GUARD SUPPORT PLATE
7	300096	1	SHAFT WASHER
6	300106-1	1	BELLEVILLE WASHER, 5/8"
5	350096-35	1	M16-2.00 X 35MM HEX HEAD BOLT
4	97436-010	12	M10 SPLIT LOCKWASHER
3	96003-040	12	M10 X 1.50 X 35 MM HEX HEAD BOLT
2	91099-004	1	GEARCASE & ADAPTER ASSY
1	351811-2	1	GENERATOR

UNLESS OTHERWISE SPECIFIED		MACHINED SURFACE TEXTURE		ALL DIMENSIONS GIVEN IN INCHES	
FRACTIONS ±	—	ANGULAR	± 1.5°	WORK TO DIMENSIONS	
1. PLACE DEC. ±	.1			— DO NOT SCALE —	
2. PLACE DEC. ±	.015				
3. PLACE DEC. ±	.005				

THIS DRAWING CONTAINS PROPRIETARY INFORMATION BELONGING TO WINPOWER. UNAUTHORIZED USE IS PROHIBITED.	DRAWN BY ZJF	DATE 7/8/2016	CHKD BY	DATE	APPD BY ZJF	DATE 7/8/2016	SCALE
	MATERIAL: _____ TITLE: COMPLETE UNIT ASSEMBLY						
	FINISH: _____						
	ASSY: _____						
	MODEL: W120PTOS-18/F						

C	7086	RMVD AVR SX460 & ADDED TORQUE	5/18/2017	SJM	DRC
B	6048	RPLCD BP10099-1 WITH 91861-004	10/17/2016	SJM	DRC
A	C3847	ORIGINAL	7/8/2016	ZJF	ZJF

ISSUE	E.C.O. NO.	DESCRIPTION	DATE	BY	APPD
		REVISION RECORD			

WINPO
INCORPORATED

64868-012