

WINPOWER

INSTRUCTION MANUAL MODEL COV4400H

THE PIERCE COMPANY, INC.
A SUBSIDIARY OF AVIS INDUSTRIAL CORPORATION
P.O. BOX 2000, UPLAND, INDIANA 46989
PHONE (317) 998-2712

INTRODUCTION

Thank you for purchasing a Pierce Company Winpower alternator. This manual covers the operation and maintenance of model COV 4400H, and it contains the latest product information available at the time of printing. The Pierce Company, Inc. reserves the right to make changes at any time without notice and without incurring any obligation.

WARNING! Indicates a strong possibility that severe personal injury, loss of life, or a serious hazard condition could occur if instructions given in this manual are not followed.



CAUTION! Indicates a possibility that personal injury, equipment damage, or other property damage could occur if the instructions are not followed.



NOTE: Lists helpful information which should assist you in getting satisfactory performance from your new alternator.

If you have a problem with your alternator, or have any questions about the alternator, consult an authorized Winpower distributor, dealer, or service center. Should you require additional information, please consult the factory service department.

The Winpower alternator is designed to give safe and dependable service if operated according to the instructions given in this manual. Read and understand the owner's operation and service manual before operating the alternator. Failure to do so could result in personal injury or

PRECAUTIONS FOR SAFE USE

To avoid fires:

WARNING! Do not store combustible material such as straw, waste paper, scrap wood, etc. where the alternator is to be stored.



WARNING! Do not store dangerous or flammable materials such as lubricants, celluloid, gasoline, explosives, etc. near the alternator.



WARNING! Operate the alternator on a level surface. If the alternator is tilted or moved during use, there is the danger of fuel spillage and/or a chance the alternator will overturn.



CAUTION! During operation, maintain a safe distance of at least three feet (one meter) from buildings or other equipment. When an alternator is located too close to a building or other equipment, heat and exhaust from the engine will cause the surrounding air temperature to rise. This will reduce the alternator's cooling capability and could cause the engine or alternator to overheat.



CAUTION! Do not enclose the alternator, install in a recreational vehicle, or cover with a structure, because this will cause it to overheat creating a possible equipment damaging condition.



WARNING! Always stop the engine when refueling due to the extreme danger that fuel vapor or spilled fuel may be ignited.



CAUTION! Be careful not to spill fuel when refueling. If fuel is spilled, completely wipe up and let dry before starting the engine.



CAUTION! Do not overfill the tank.



CAUTION! Never refuel in the presence of a lighted cigarette or open fire.

WARNING! Never refuel a hot engine. Always allow the engine to cool before refueling.



Exhaust gases:

WARNING! Do not operate the alternator in locations with poor ventilation such as home interiors, warehouses, tunnels, wells, pits, tanks, ship holds, etc. Fatal levels of gaseous fumes can accumulate in poorly ventilated areas and increase the danger of carbon monoxide poisoning. Always pay strict attention to the fire codes, building codes, and safety regulations if the alternator is operated inside a building.



Other precautions:

WARNING! Do not operate the alternator with wet hands, because severe electrical shock may occur. Do not operate in the rain or snow.



CAUTION! Do not touch the muffler during operation or just after stopping, because a serious burn could result. The exhaust system operates at a very high temperature.



CAUTION! Do not get water on the alternator. If the unit becomes wet, allow it to completely dry before operating. Also, a wet spark plug may prevent the engine from starting.



CAUTION! Do not connect the alternator to the household electrical system without using a U.L. listed double throw disconnect switch. Any such installation should be made only by a licensed electrician in accordance with all city, county, province, state, regional, and national electrical codes.



CAUTION! If you should notice an abnormal noise, odor, vibra-


tion, etc. when the unit is operating, it should be stopped immediately and the reason for the condition determined. Failure to do so could permanently damage the unit as well as associated equipment. If the cause cannot be determined, the unit should be taken to the nearest service center for proper diag-


nosis.

WARNING! Make sure that the unit is grounded properly and in accordance with all applicable regulating codes.


PRESTART PROCEDURES

Check the engine oil level:


CAUTION!  Remove the oil filler cap to check the oil level. If the oil level is low, add a high quality motor oil to the point of overflowing.

CAUTION!  Engine oil is a major factor affecting engine performance and service life. Use only recommended types and grades of lubricating oil (see engine manual for manufacturer's recommendation). If your engine manual has been misplaced, then the following is recommended:

Summer SAE #20-30
Winter SAE #10W-30

CAUTION!  The engine is shipped WITHOUT oil. Use a high quality detergent oil classified "For service SF, SE, SD, or SC." Detergent oils keep the engine cleaner and retard the formation of gum and varnish deposits. Use 4 stroke oil, do not use 2 stroke oil.

Oil Capacity for Model COV4400H: 3 Pints (1.42 liters)

CAUTION!  Running the engine with insufficient oil can cause serious engine damage.

Fueling the engine:

The engine manufacturer recommends the use of clean, fresh, lead-free gasoline. Leaded gasoline may be used if lead-free is not available. The use of lead-free gasoline results in fewer combus-

tion deposits and longer valve life. If long-term storage is expected, a fuel stabilizer (such as STA-BIL™) should be used to eliminate the formation of fuel gum deposits in the fuel system.

Fuel Capacity: 6.4 Quarts (6.1 liters)

NOTE: When refueling, the following steps are recommended:

WARNING! Always stop the engine.



Disconnect and ground the spark plug lead wire.

NOTE: Close the fuel valve at the base of air cleaner.


CAUTION! Always wipe up all spilled fuel.




Replace spark plug lead wire.

NOTE: Open the fuel valve.

NOTE: Ensure the circuit breakers are in the pushed in or "Reset" position.

WARNING!  Before starting, disconnect all power cords from the AC receptacles on the alternator panel.

WARNING!  The alternator may be hard to start if a load is connected. It is dangerous if electric tools are powered during start up. This could result in personal injury or damage to the electric tools.

ENGINE STARTING/STOPPING

Engine starting:

1. Check oil and fuel levels.
2. Make sure the appliance is disconnected.
3. Move engine Choke control as far left as possible toward "Choke" or "Start" position. (When the engine is warm or the temperature is high, start the engine with the choke in the run position.)
4. Place the engine switch in the "On" position.
5. Grasp the starter grip and pull on the rope until you feel the maximum resistance. Allow the rope to recoil to its original position, then pull it again vigorously.
6. When the engine starts, open choke gradually. If the engine does not start, review the status of the fuel supply and oil level. The COV4400H is equipped with a low oil level shutdown device. If the oil level is low, this device will not allow the engine to start. The red annunciator light will blink during the attempt to start the engine.

Engine stopping:

1. Remove all electrical load by disconnecting all power cords from the end alternator panel.
2. Allow engine to run unloaded for several minutes.
3. Place engine switch in "OFF" position.

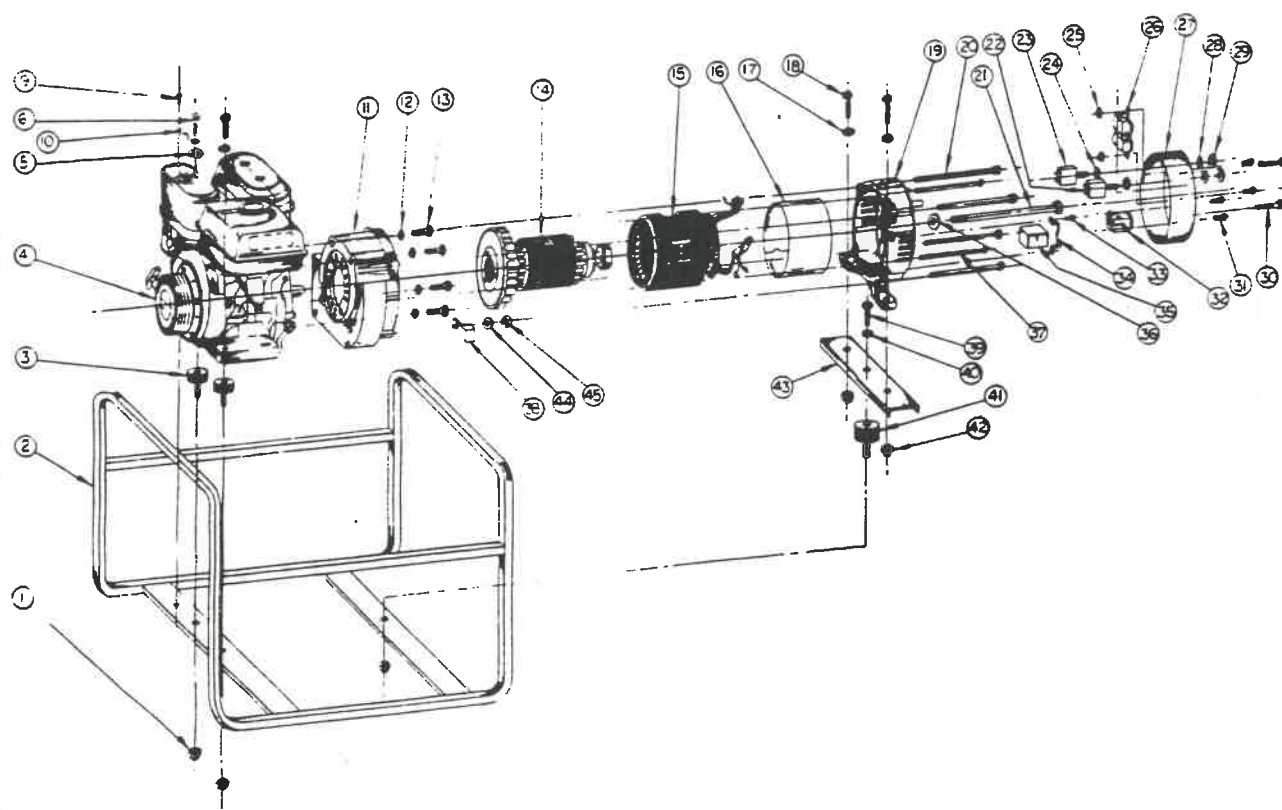
MAINTENANCE

Before start-up, perform the following routine maintenance items.

1. Check fuel supply.
2. Check engine oil level; if not full, add as required. If at service interval, start engine to warm oil; drain and replace.
3. Check air cleaner; service if required.
4. Inspect for loose bolts and screws. Retighten all loose items. Replace all missing or broken items. Inspect for broken receptacles; replace broken items.
5. Inspect for fuel and oil leaks. Service as required to stop leakage.
6. Start unit and check for abnormal noise and vibrations. Correct any abnormal condition.
7. Inspect exhaust system.
8. Ensure the generator cooling slots are clear for proper ventilation.

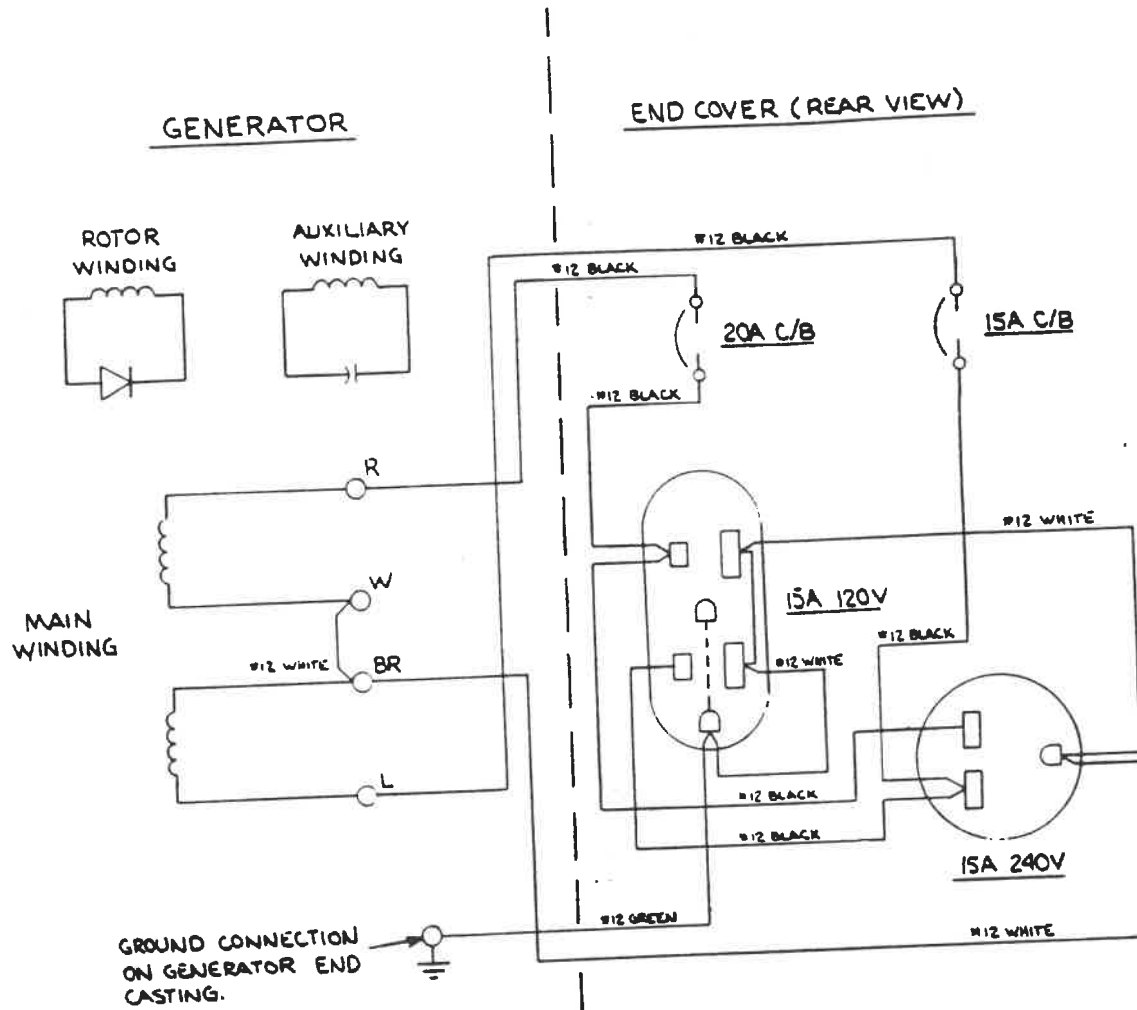
Refer to the engine manual for the manufacturer's recommended engine maintenance procedures.

To ensure reliable starting, start and run the unit periodically to minimize carburetor clogging and fuel varnishing. When the engine will be stored for long periods of time without exercising, drain all fuel from the carburetor and fuel system.



COV4400H PARTS LIST

ITEM	PART NO.	DESCRIPTION	QTY	ITEM	PART NO.	DESCRIPTION	QTY
1	240018001	5/16-18 NYLOK HEX NUT	2	24	240013001	PALNUT	2
2	240001170	CARRY FRAME	1	25	240018003	8-32 HEX NUT	2
3	240008001	VIBRATION ISOLATOR	2	26	240007160	DUPLEX RECEPTACLE 15A/125V	1
4	248003080	HONDA 8HP ENGINE	1	27	240018040	GENERATOR END COVER	1
5	240015004	5/16 LOCK WASHER	2	28	240013003	NAMEPLATE	2
6	240017003	5/16-18 X 1.5 HX HD SCREW	2	29	240013002	KNURLNUT	2
9	240017001	10-24 X .375 THD FORM SCREW	1	30	240008080	END COVER MTG SCREW	2
10	240011001	GROUND STRAP ASSY	1	31	240017005	8-32 X .375 RD HD SCREW	4
11	240008010	ENGINE ADAPTER CASTING	1	32	240008161	SINGLE RECEPTACLE 15A/250V	1
12	240015006	3/8 LOCK WASHER	4	33	240008070	SCREW M5 X 12MM	1
13	240017030	3/8-16 X 1.25 HX HD SCREW	4	34	240008080	CAPACITOR MTG BRACKET	1
14	240008020	ROTOR	1	35	240008080	CAPACITOR	1
15	240008030	STATOR	1	36	240015002	5/16 FLAT WASHER	1
16	240008040	COVER BAND	1	37	240008110	STATOR DRAW BOLT	4
17	240015008	3/8 LOCK WASHER	2	38	240010002	GROUND LUG	1
18	240017040	3/8-16 X 1.5 HX HD SCREW	2	39	240017011	3/8-16 X .75 HX HD SCREW	1
19	240008130	ENDBELL CASTING	1	40	240015006	3/8 LOCK WASHER	1
20	240008120	CASTING DRAW BOLT	4	41	240008030	VIBRATION ISOLATOR	1
21	240008050	ROTOR DRAW BOLT	1	42	240018010	3/8-16 NYLOK HEX NUT	3
22	240013150	CIRCUIT BREAKER 15A/250V	1	43	240020040	GENERATOR MTG RAIL	1
23	240013200	CIRCUIT BREAKER 20A/250V	1				



LIMITED WARRANTY

The Pierce Company, Inc., Generator Division, hereby warrants for one year the Alternator Set described herein to be free from defects in material and workmanship if properly installed, serviced, and operated under normal conditions according to our instructions.

This warranty covers parts and labor and is extended to the original purchaser for a period of one year (365 days) from the date of purchase. During that period, The Pierce Company, Inc., Generator Division, will replace free of charge upon examination by the factory, or an authorized service center, any part or parts found to be defective in material or workmanship.

This warranty does not obligate the manufacturer to bear any transportation charges in connection with the replacement or repair of defective parts or delivery of the defective alternator set. This warranty does not cover rental charges for replacements while defective unit is being repaired. The replacement of parts and/or service arising out of abuse, neglect, or normal wear and tear is not covered by this warranty.

The Pierce Company, Inc., Generator Division, hereby disclaims any and all implied warranties, including but not limited to, warranties of merchantability and fitness for any, if and to the extent, that such disclaimer is not forbidden by any applicable law. Implied warranties, including but not limited to, warranties of merchantability and fitness for any particular purpose which The Pierce Company, Inc. is so forbidden to disclaim by any applicable law, are warranted one year from the date of purchase.

This is the purchaser's sole and exclusive remedy hereunder. Liability for consequential, incidental or special damages and/or expenses under any and all warranties are excluded to the extent exclusion is permitted by law.

All applications for warranty must have the model and serial number of the unit for which the application(s) is being filed, customer's name, address, phone number, and date of sale; otherwise, the warranty/application and payment may be rejected or delayed.

SPECIFIC CONDITIONS NOT COVERED BY LIMITED WARRANTY

The Alternator set is equipped with an engine which is not covered by this warranty. The engine is covered exclusively by the engine manufacturer's warranty presented in the enclosed engine manual.

The Alternator Set is intended to be used as constructed by the factory. Any modifications to the assembly, such as conversion to LP gas fuel, will void the warranty. The Pierce Company, Inc., Generator Division, does not warrant any modifications to the unit.

240032060:12/90

WINPOWER GENERATOR DIVISION WARRANTY REGISTRATION

Please use this form to register information on the generator you have purchased. In order to notify each original owner of any future warranty situation, we must know:

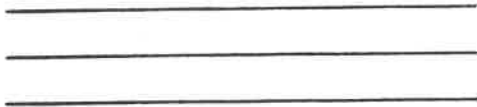
1. Your Name _____
2. Your Address _____
City _____
State _____ Zip _____
Telephone No. _____
3. The Model Number _____
4. The Serial Number _____
5. Purchased From _____

6. Date of Purchase _____

OPTIONAL

7. Comments: useage, why selected, etc.

Fold this form where indicated, staple or tape, apply the correct postage, and return it to us without delay.



1st class
postage

WINPOWER GENERATOR DIVISION
THE PIERCE COMPANY, INC.
P.O. BOX 2000
UPLAND, IN 46989