

# **WINGCO**<sup>®</sup> **GENERATORS**

 An American Company



# **2021**

**Power. Driven.**

What a year 2020 was. The pandemic, unrest in our country, and hurricanes repeatedly ravaging the same areas on the Gulf of Mexico coastline made the year challenging for all. We have faith that 2021 will bring better health and opportunities for the future. It is in times of uncertainty that we must be ready for anything. One thing that always make turbulent times better, are great partners. We appreciate your partnership and look forward to working together in 2021.

# TABLE OF CONTENTS

<b>PORTABLES</b> _____	<b>3</b>
PORTABLE ACCESSORIES _____	5
<b>EMERGENCY STANDBY</b> _____	<b>6</b>
STANDBY ACCESSORIES _____	8
EXTENDED WARRANTIES _____	8
<b>PRIME POWER</b> _____	<b>9</b>
DIESEL ACCESSORIES _____	11
<b>ASCO TRANSFER SWITCHES</b> _____	<b>12</b>
185 SERIES AUTOMATIC _____	12
300 SERIES AUTOMATIC _____	13
300 SERIES MANUAL _____	15
QUICK CONNECT PANELS _____	16
<b>POWER TAKE-OFF</b> _____	<b>17</b>
PTO ACCESSORIES _____	18
<b>2-BEARING GENERATORS</b> _____	<b>19</b>

# PORTABLE



## INDUSTRIAL SERIES

Model	Output		Engine	Fuel Tank Capacity	Receptacles			Shipping	
	Running Watts	Voltage			120V	120/240V	240V	Weight	Dimensions (in)
W3000H	2,400	120	Honda GC160	2 Qt	5-20R	-	-	72 lbs	25 x 19 x 19
W6000HE	5,500	120/240	Honda GX340	7 Gal	2 x 5-20R	L14-30	-	210 lbs	36 x 26 x 24
W6010DE (DIESEL)	5,160	120/240	Kohler KD440	7 Gal	5-20R L5-30R	L14-30	-	268 lbs	36 x 26 x 24
W10000VE	9,600	120/240	B&S Vanguard	7 Gal	2 x 5-20R	14-60	L6-30	298 lbs	36 x 26 x 24
WL12000HE 60A	10,800	120/240	Honda GX630	15 Gal	3 x 5-20R	14-60	L6-30	412 lbs	50 x 27 x 26
WL12000HE 50A	10,800	120/240	Honda GX630	15 Gal	3 x 5-20R	CS6365C	L6-30	412 lbs	50 x 27 x 26
WL6000HE	14,000	120/240	Honda iGX800	15 Gal	3 x 5-20R	CS6365C	L6-30	412 lbs	50 x 27 x 26
WL18000VE	16,500	120/240	B&S Vanguard	15 Gal	3 x 5-20R L5-20	14-60	L6-30	504 lbs	44 x 31 x 37
WL22000VE/A	19,000	120/240	B&S Vanguard	15 Gal	2 x 5-20R	2 x 14-50R	L6-30	504 lbs	44 x 31 x 37
WL22000VE/C	19,000	120/240	B&S Vanguard	15 Gal	2 x 5-20R	CS6365C L14-30	Anderson	504 lbs	44 x 31 x 37



## DYNA PROFESSIONAL SERIES

Model	Output		Engine	Fuel Tank Capacity	GFCI Receptacles		Shipping	
	Running Watts	Voltage			120V	120/240V	Weight	Dimensions (in)
DP3000	2,500	120	Honda GX160	1 Gal	5-20R	-	110 lbs	34 x 24 x 27
DP5000	4,500	120/240	Honda GX270	7 Gal	2 x 5-20R	L14-30	178 lbs	30 x 22 x 24
DP7500	6,000	120/240	Honda GX390	7 Gal	2 x 5-20R	L14-30	215 lbs	30 x 22 x 24



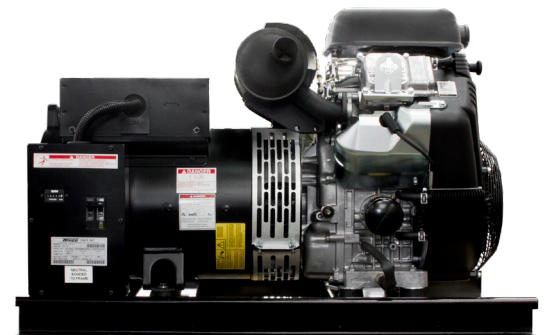
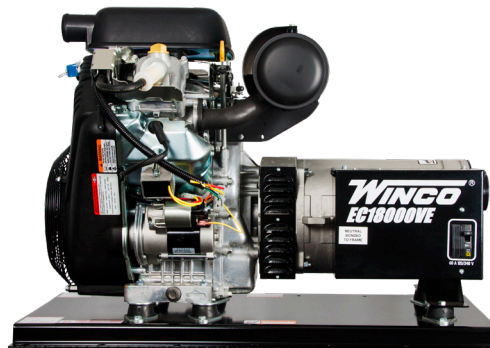
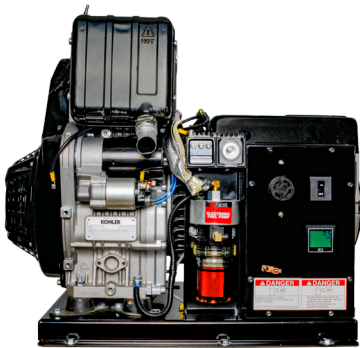
WINCO Generators has offered a strong line of portable generators for decades. Our tough-as-nails designs have provided long lasting, dependable generators for professional and residential customers that only want the best.



## HOME POWER SERIES

Model	Output		Engine	Fuel Tank Capacity	Receptacles		Shipping	
	Running Watts <sup>(5)</sup>	Voltage			120V	120/240V	Weight	Dimensions
HPS6000HE <sup>(2)</sup>	5,500	120/240	Honda GX340	7 Gal	5-20R	L14-30	224 lbs	33 x 25 x 30
HPS9000VE	8,000	120/240	B&S Vanguard	7 Gal	2 x 5-20R	L14-30	272 lbs	33 x 25 x 30
HPS12000HE <sup>(3)</sup>	10,800	120/240	Honda GX630	15 Gal	2 x 5-20R	L14-30 14-60 <sup>(4)</sup>	456 lbs	50 x 40 x 36

NOTES: (1) Based on gasoline fuel. Derate 10% for LP Gas and 20% for Natural Gas. (2) HPS6000HE bi-fuel only (NG and Gasoline) (3) 4-Wheel dolly kit standard with HPS12000HE (4) The 14-60 receptacle is not GFCI protected.



## VEHICLE MOUNTED

Model	Output		Engine	Fuel Tank Capacity	Recptacles	Shipping	
	Running Watts	Voltage			120/240V	Weight	Dimensions (in)
EC6010DR <sup>(1)</sup>	5,160	120/240	Kohler KD440	N/A	L14-30	240 lbs	32 x 24 x 24
EC18000VE	15,000	120/240	B&S Vanguard	OPTIONAL <sup>(2)</sup>	14-60	354 lbs	50 x 27 x 32
EC22000VE (1-Ph)	19,000	120/240	B&S Vanguard	OPTIONAL <sup>(2)</sup>	-	515 lbs	50 x 27 x 32
EC22000VE (3-Ph)	19,000	Varies	B&S Vanguard	OPTIONAL <sup>(2)</sup>	-	515 lbs	50 x 27 x 32

NOTES: (1) The EC6010DR is diesel fuel only. (2) Optional 15 gallon fuel system available. See portable accessories for details.



# PORTABLE ACCESSORIES

Part Number	Description	Compatible Model	Shipping	
			Weight	Dimensions (in)
<b>DOLLY KITS</b> *For older models contact your WINCO parts department				
16199-026	HPS SERIES 2-WHEEL DOLLY KIT	HPS6000HE/HPS9000VE	32 lbs	30 x 15 x 5
16199-036	W SERIES 2-WHEEL DOLLY KIT	W6000HE/W6010DE/W10000VE	25 lbs	30 x 15 x 5
16199-039	DP SERIES 2-WHEEL DOLLY KIT	DP5000/DP7500	25 lbs	24 x 10 x 5
16199-043	WL SERIES 4-WHEEL DOLLY KIT	WL12000HE/WL16000HE - standard on HPS12000HE	66 lbs	26 x 26 x 9
16199-040	LARGE 4-WHEEL DOLLY KIT	WL18000VE/WL22000VE	66 lbs	27 x 26 x 9
<b>GENERATOR COVERS</b>				
64444-012	SMALL	HPS6000HE/HPS9000VE W/O DOLLY KIT	3 lbs	16 x 12 x 6
64444-014	SMALL	HPS6000HE/HPS9000VE W/ DOLLY KIT	3 lbs	16 x 12 x 6
64444-013	LARGE	12kW - 22kW	5 lbs	16 x 12 x 6
64444-016	MEDIUM	DP5000/DP7500/WC6000HE/W6010DE/W10000VE	5 lbs	16 x 12 x 6
<b>EMERGENCY TRANSFER SWITCH</b>				
XRK0603D	60/30 AMP	5kW-9kW	23 lbs	25 x 15 x 5
XRK0606D	60/60 AMP	10kW-22kW	23 lbs	25 x 15 x 5
PBN30-000	30A NEMA L14-30 INLET BOX	ALL MODELS WITH NEMA L14-30	2 lbs	7 x 7 x 5
64488-004	60A NEMA 14-60 CORD & BOX	12kW - 18kW	32 lbs	16 x 16 x 13
<b>PLUG IN VOLT METER</b>				
24743-000		ALL MODELS	1 lb	8 x 6 x 6
<b>BATTERIES &amp; BATTERY CHARGER</b>				
80765-012	12V U1 300 CCA	W6010DE/10kW-16kW	17 lbs	8 x 6 x 8
80765-013	12V GROUP 26 500 CCA	WL18000VE/EC18000VE/WL22000VE/EC22000VE	20 lbs	9 x 8 x 8
80765-014	12V 18-A 235CCA	DP7500/HPS6000HE/ HPS9000VE	14.8 lbs	8 x 6 x 8
72036-022	1.5 TRICKLE BATTERY CHARGER	6kW - 18kW	2 lbs	8 x 6 x 6
<b>MAINTENANCE KITS</b> *For older models contact your WINCO parts department				
16200-000	Honda GC160	W3000H	3.5 lbs	9 x 9 x 6
16200-001	Honda GX160/200	DP3000	3.5 lbs	9 x 9 x 6
16200-002	Honda GX270/340	W6000HE/HPS6000HE	5.5 lbs	9 x 9 x 6
16200-003	Honda GX270/340/390 Low Profile	DP5000/DP7500	5.5 lbs	9 x 9 x 6
16200-007	B&S Vanguard 18HP	HPS9000VE/W10000VE	7 lbs	9 x 9 x 6
16200-005	Honda GX630/GX690	WL12000HE/HPS12000HE	7 lbs	9 x 9 x 9
16200-011	B&S Vanguard 31/35HP	WL18000VE/EC18000VE/WL22000VE/EC22000VE	7 lbs	9 x 9 x 6
16200-014	Kohler K440	W6010DE/EC6010DR	5.5 lbs	9 x 9 x 6
16200-031	Honda iGX800	WL16000HE	5.5 lbs	9 x 9 x 6
<b>WINCO PREMIUM FULL SYNTHETIC OIL</b>				
300515-31	5W-30, 1 QUART	ALL GASOLINE ENGINES	5.5 lbs	9 x 9 x 6
<b>PLUGS &amp; CORD SETS</b>				
300137	NEMA 14-60 60AMP	WL12000HE/WL18000VE/HPS12000HE	1 lb	8 x 6 x 6
64492-000	NEMA L14-30 30AMP	DP5000/DP7500/W6000HE/HPS6000HE/HPS9000VE	1 lb	8 x 6 x 6
64493-000	CS6365C 50AMP	WL12000HE 50A/WL16000HE	1 lb	8 x 6 x 6
64697-000	NEMA L6-30 30AMP	10kW-22kW	1 lb	8 x 6 x 6
97360-002	NEMA 14-50 50AMP	W10000VE/WL22000VE/A	1 lb	8 x 6 x 6
91861-007	ANDERSON PLUG KIT	WL22000VE/B	2 lb	8 x 6 x 6
PC3020M	30A 20FT CORD	ALL MODELS WITH NEMA L14-30	7 lbs	7 x 7 x 5
350159-8	CORD, 100', 14-60P TO L6-30R	-	10 lbs	8 x 6 x 6
64488-005	CORD, 18", 14-50 TO CS6364	-	1 lbs	7 x 7 x 5
64488-006	CORD, 18", L14-30 TO L6-30	-	1 lbs	7 x 7 x 5
64488-008	CORD, 18", 14-60 TO CS6364	-	1 lbs	7 x 7 x 5
<b>LOW PRESSURE FUEL SOLENOID</b>				
64854-005		HPS6000HE/HPS9000VE	4 lbs	8 x 6 x 6
64854-009		HPS12000HE	4 lbs	8 x 6 x 6
<b>FUEL SYSTEM</b>				
19022-400	15 GAL FUEL SYSTEM	EC18000VE/EC22000VE	32 lbs	28 x 19 x 22



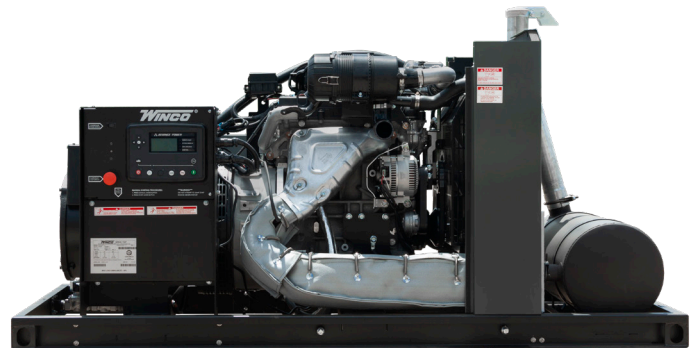
# STANDBY



## AIR-COOLED

Model	Voltage	Output LP			Output Natural Gas			CB Amps	Engine	Shipping	
		Watts	kVa	Amps	Watts	kVa	Amps			Weight	Dimensions (in)
PSS8B2W	120/240	8,400	8.4	35	7,600	7.6	32	35	B&S Vanguard	400 lbs	45 x 30 x 32
PSS8B2W SOLAR	120/240	6,720 <sup>(1)</sup>	6.7	28	6,080 <sup>(1)</sup>	6	25.3	25	B&S Vanguard	460 lbs	49 x 35 x 35
PSS12H2W	120/240	12,000	12	50	10,000	10	41	50	Honda GX690	484 lbs	48 x 32 x 35
PSS12H2W SOLAR	120/240	9,600 <sup>(1)</sup>	9.6	40	8,000 <sup>(1)</sup>	8	33	40	Honda GX690	532 lbs	48 x 32 x 35
PSS20B2W	120/240	17,000	17	71	15,000	15	52	80	B&S Vanguard	878 lbs	61 x 38 x 43

Notes: (1) Rated output reflects prime power derate.



## LIQUID-COOLED

Model	Voltage	Output <sup>(1)</sup> LP			Output <sup>(1)</sup> Natural Gas			CB Amps	Engine	Shipping Housed	
		Watts	kVa	Amps	Watts	kVa	Amps			Weight (lbs)	Dimensions (in)
PSS21	120/240	21,000	21	88	21,000	21	88	90	FORD 2.5L	1,486	86 x 40 x 51
PSS30	120/240	28,000	28	116	27,000	27	112	125	FORD 2.5L	1,570	86 x 40 x 51
PSS60	120/240	56,000	56	233	55,000	55	229	250	GM 5.7L	2,390	110 x 40 x 60
PSS90	120/240	80,000	80	333	90,000	90	375	350	GM 5.7L T	2,964	113 x 47 x 67
PSS150	120/240	120,000	120	500	125,000	150	625	600	PSI 8.8L TAC	5,500	132 x 53 x 72

Notes: (1) Output information is single phase, see spec sheets for 3-phase information.

For more than 150kW, WINCO offers paralleling options.



When it comes to the safety and protection of your home or business, you need to feel confident that your generator will be ready when you need it most. Our engineers have designed our standby units to be reliable, providing the peace of mind you need.



## DIESEL

Model	Engine		Shipping			
	Model	Tier	Weight Open	Weight Housed	Open Dimensions (in)	Housed Dimensions (in)
DR1214	Isuzu 3CE1	IV Final	916 lbs	1,946 lbs	63 x 34 x 34	75 x 34 x 45
DR2014	Isuzu 4LE1	IVi	916 lbs	2,020 lbs	63 x 34 x 34	75 x 34 x 45
DR35F4	FPT 45 SM1 T	III	2,025 LBS	3,225 lbs	84 x 41 x 43	103 x 41 x 64
DR45F4	FPT N45 SM1 T	III	2,025 lbs	3,225 lbs	84 x 41 x 43	103 x 41 x 64
DR65F4	FPT N45 SM2 T	III	2,250 lbs	3,425 lbs	84 x 41 x 45	103 x 41 x 64
DR90F4	FPT N45 TM2 TAC	III	2,700 lbs	3,425 lbs	96 x 40 x 48	107 x 43 x 60
DR100F4	FPT N67 TM1 TAC	III	3,400 lbs	5,050 lbs	108 x 48 x 53	137 x 51 x 80
DR130F4	FPT N67 TM1 TAC	III	3,500 lbs	5,150 lbs	108 x 48 x 53	137 x 51 x 80
DR175F4	FPT N67 TE2 TAC	III	3,600 lbs	5,250 lbs	108 x 48 x 53	137 x 48 x 80
DR250F4	FPT C87 TE1D TAC	III	6,300 lbs	8,740 lbs	144 x 59 x 62	181 x 59 x 87
DR300F4 <sup>(1)</sup>	FPT C10 TE1D TAC	III	6,500 lbs	8,940 lbs	144 x 59 x 63	181 x 59 x 87
DR350F4 <sup>(1)</sup>	FPT C13 TE3X TAC	III	6,500 lbs	8,945 lbs	144 x 59 x 61	181 x 59 x 87
DR450V4 <sup>(1)</sup>	Volvo TWD1650GE	II	8,950 lbs	11,300 lbs	144 x 78 x 84	236 x 78 x 92
DR500V4 <sup>(1)</sup>	Volvo TWD1641GE	II	9,270 lbs	11,550 lbs	144 x 78 x 84	236 x 78 x 92
DR550V4 <sup>(1)</sup>	Volvo TWD1642GE	II	9,590 lbs	11,950 lbs	144 x 78 x 84	236 x 78 x 92
DR600V4 <sup>(1)</sup>	Volvo TWD1644GE	II	10,850 lbs	13,200 lbs	144 x 78 x 84	236 x 78 x 92

Note: (1) DR300-DR600 are available in 3-phase only.



# STANDBY ACCESSORIES

Part Number	Description	Compatible Model	Shipping	
			Weight	Dimensions (in)
<b>ENGINE OIL HEATER</b>				
15809-003		PSS12/PSS20	4 lbs	8.5 x 8.5 x 4
300484-5		PSS8	4 lbs	8.5 x 8.5 x 4
<b>VAPOR FUEL STRAINERS</b>				
16243-000	3/4 in.	PSS8/PSS12/PSS20/PSS21/PSS30	2.5 lbs	8 x 6 x 6
98573-125	1 1/4 in.	PSS60-PSS150	5 lbs	8 x 6 x 6
<b>BATTERIES</b>				
80765-013	GROUP 26 500 CCA	PSS8/PSS12/PSS20	20 lbs	9 x 8 x 8
80765-010	GROUP 24 650 CCA	PSS21-PSS90/DR12-DR65	20 lbs	11 x 8 x 9
80765-011	GROUP 31 900 CCA	PSS150/DR90-DR130	25 lbs	11 x 8 x 9
80765-008 <sup>(1)</sup>	GROUP 4D 1050 CCA	DR175-DR600	25 lbs	11 x 8 x 9
<b>BATTERY HEATERS</b>				
300484-3		PSS8/PSS12/PSS20	3 lbs	8 x 8 x 4
350279-4 <sup>(1)</sup>		PSS21-PSS150/DR12-DR350	5 lbs	14 x 8 x 5
<b>MAINTENANCE KITS</b> *For older models, contact your WINCO representative				
16200-006	HONDA GX630/690 GASEOUS	PSS12	5.5 lbs	9 x 9 x 9
16200-008	VANGUARD 18HP	PSS8	5.5 lbs	9 x 9 x 6
16200-009	VANGUARD 35HP	PSS20	6 lbs	9 x 9 x 6
<b>WINCO PREMIUM FULL SYNTHETIC OIL</b>				
350015-31	5W-30, 1 QUART	VARIES	5.5 lbs	9 x 9 x 6
350015-425	5W-40, 2.5 GALLONS	VARIES	10 lbs	11 x 8 x 9
<b>FACTORY INSTALLED OPTIONS</b>				
99367-000	LP LIQUID WITHDRAWAL	PSS21-PSS150		FACTORY INSTALLED
352030-1	NFPA 110 LEVEL 1 COMPLIANT UPGRADE	PSS21-PSS150/DR MODELS		FACTORY INSTALLED
64921-004	PERMANENT MAGNET GENERATOR <small>MX321 0.5% Regulation</small>	PSS60-PSS150/DR35-DR175		FACTORY INSTALLED
72036-017	10 AMP BATTERY CHARGER W/ FAIL CONTACT	PSS21-PSS150/DR20-DR175		FACTORY INSTALLED
300507	GENERATOR STRIP HEATER	PSS21-PSS150/DR MODELS		FACTORY INSTALLED
<b>DIGITAL CONTROLLER OPTIONS</b>				
358456-1	DSE2548 REMOTE ANNUNCIATOR	DSE7310		SHIPPED LOOSE
358456-11	DSE2510 REMOTE DISPLAY	DSE7310		SHIPPED LOOSE
N/A	DSE8610 DIGITAL CONTROLLER	PSS60-PSS150/DR175-DR350		FACTORY INSTALLED
N/A	DSE8660 DIGITAL CONTROLLER	DSE8610		SHIPPED LOOSE
352014-4	DSE890 WEBNET GATEWAY	DSE4510/DSE7310		FACTORY INSTALLED
351112-18	DSE GSM ANTENNA	DSE890		
351112-19	DSE GPS ANTENNA	DSE890		
<b>TRANSFER SWITCHES</b>				
ASCO185 & 300 SERIES SEE PAGE 12				
Notes: (1) The DR250-350 require two batteries per unit.				

## AIR-COOLED STANDBY EXTENDED WARRANTY

PART NUMBER	DESCRIPTION
EW-5SL	5 YEAR, 1000 HOUR STANDBY LIMITED WARRANTY
EW-10SL	10 YEAR, 1000 HOUR STANDBY LIMITED WARRANTY

Note: For more information on extended warranties, contact our Service Department.

## LIQUID-COOLED STANDBY EXTENDED WARRANTY

PART NUMBER	DESCRIPTION
EW-3SC	3 YEAR, 2000 HOUR STANDBY LIMITED WARRANTY
EW-5SC	5 YEAR, 3000 HOUR STANDBY COMPREHENSIVE WARRANTY
EW-5SL	5 YEAR, 3000 HOUR STANDBY LIMITED WARRANTY
EW-1PL	1 YEAR, 4500 HOUR PRIME POWER LIMITED WARRANTY
EW-5SL	10 YEAR, 3000 HOUR STANDBY LIMITED WARRANTY

Note: For more information on extended warranties, contact our Service Department.





# PRIME

## AIR-COOLED

Model	Voltage	Output LP			Output Natural Gas			CB Amps	Engine	Shipping	
		Watts	kVa	Amps	Watts	kVa	Amps			Weight	Dimensions (in)
PSS8B2W	120/240	6,720	6.7	28	6,080	6	25.3	25	B&S Vanguard	400 lbs	45 x 30 x 32
PSS8B2W SOLAR	120/240	6,720	6.7	28	6,080	6	25.3	25	B&S Vanguard	460 lbs	49 x 35 x 35
PSS12H2W	120/240	9,600	9.6	40	8,000	8	33	40	Honda GX690	483 lbs	48 x 32 x 35
PSS12H2W SOLAR	120/240	9,600	9.6	40	8,000	8	33	40	Honda GX690	532 lbs	48 x 32 x 35

## LIQUID-COOLED

Model	Voltage	Output <sup>(1)</sup> LP			Output <sup>(1)</sup> Natural Gas			CB Amps	Engine	Shipping Housed	
		Watts	kVa	Amps	Watts	kVa	Amps			Weight (lbs)	Dimensions (in)
PSS30	120/240	25,200	25	105	24,300	24	101	125	FORD 2.5L	1,570	86 x 40 x 51

Notes: (1) Output information is single phase, see spec sheets for 3-phase information.

## DR/RP SERIES

Model	Engine		Shipping			
	Model	Tier	Weight Open	Weight Housed	Open Dimensions (in)	Housed Dimensions (in)
DR1214	Isuzu 3CE1	IV Final	916 lbs	1,946 lbs	63 x 34 x 34	75 x 34 x 45
RP50	FPT F5	IV Final	3,350 lbs	4,150 lbs	100 x 50 x 65	100 x 60 x 70

Note: RP models are dedicated voltage with no receptacle packages.

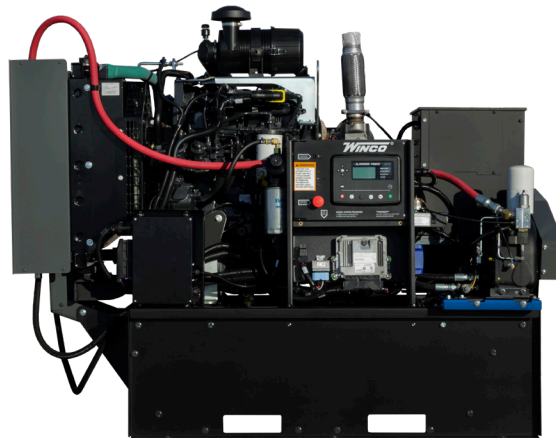
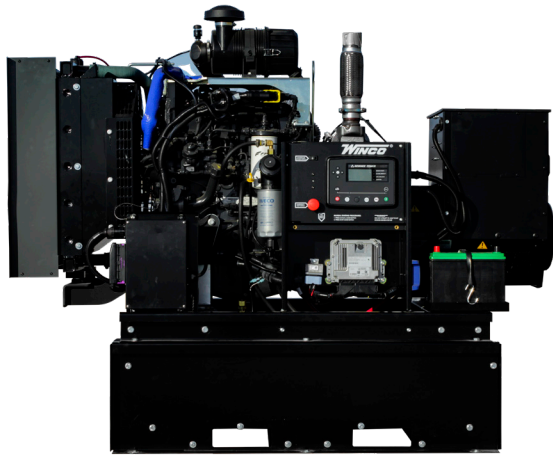


## TOWABLE

Model	Watts	Voltage	Engine		Tank Size	Receptacles	Shipping	
			Model	Tier			Weight	Dimensions (in)
DR12	11,250	Dedicated	Isuzu 3CE1	IV Final	54 Gal	Standard	2,940 lbs	131 x 54 x 78
RP50	47,500	Switchable	FPT F5	IV Final	95 Gal	Standard	4,500 lbs	150 x 71 x 88



When your application depends on a generator for your primary source of power you shouldn't settle on anything less than a WINCO.



## DE SERIES

Model	Output		Engine		Shipping		
	1-Phase	3-Phase	Model	Tier	Weight	Dimensions W/O Tank (in)	Dimensions W/ Tank (in)
DE23	23,000	23,000	Isuzu 4LE2 T	IV Final	1,000 lbs	66 x 33 x 43	66 x 33 x 58
DE40	40,000	40,000	FPT F4	IV Final	2,094 lbs	66 x 33 x 43	80 x 44 x 47
DE4040 <sup>(1)</sup>	33,500	40,000	FPT F5	IV Final	2,250 lbs	76 x 33 x 48	85 x 48 x 56
DE50	47,500	47,500	FPT F5	IV Final	2,094 lbs	80 x 34 x 47	89 x 45 x 57

Notes: (1) DE4040 comes standard with NK31 Rotorcomp air compressor.

## DIESEL FUEL TANKS

Part Number	Compatible Model	Gallons	Hours Full Load <sup>(2)</sup>	Appx. Dry Weight	Dimension (in)
VARIES	DE Models	54 <sup>(1)</sup>	29	150 lbs	63 x 34 x 10
415020-000	DR12/DR20	54 <sup>(1)</sup>	29	150 lbs	63 x 34 x 11.5
350041-93		55	31	500 lbs	63 x 34 x 13
350041-108		110	61	700 lbs	63 x 34 x 23
350041-97		155	86	850 lbs	63 x 34 x 33
350041-125	DR35/DR45/DR65/DR90	180	26	1,000 lbs	108 x 42 x 17
350041-126		320	46	1,300 lbs	108 x 42 x 29
N/A	RP50	90	25	1,350 lbs	95.5 x 45 x 18
N/A		200	55	1,625 lbs	95.5 x 45 x 28
350041-121	DR100/DR130/DR175	230	29/26/18	1,100 lbs	109 x 48 x 19
350041-119		415	53/47/33	1,700 lbs	109 x 48 x 36
350041-114	DR250/DR300/DR350	560	33/28/23	2,500 lbs	144 x 59 x 25
350041-81Z		845	50/42/34	2,600 lbs	144 x 59 x 35
	DR450/DR500/DR550/DR600				
350041-135	OPEN SKID	1000	20	3,700 lbs	138 x 78 x 34
350041-140	HOUSED	1340	27	5,100 lbs	236 x 78 x 24
350041-136	HOUSED	3000	62.5	8,400 lbs	330 x 78 x 36

Notes: (1) 54 Gallon fuel tank is not UL 142. Units fitted with this tank are not UL2200 listed. All sub-base standby fuel tanks, except the 54 gallon, are double walled.

(2) For fuel consumption of the DR35, DR450-550, see spec sheet.

\*\*Other fuel tank sizes are available upon request.



# PRIME ACCESSORIES

Part Number	Description	Compatible Model	Shipping	
			Weight	Dimensions (in)
<b>ENGINE OIL HEATER</b>				
15809-003		PSS12/PSS20	4 lbs	8.5 x 8.5 x 4
300484-5		PSS8	4 lbs	8.5 x 8.5 x 4
<b>VAPOR FUEL STRAINERS</b>				
16243-000	3/4 in.	PSS8/PSS12	2.5 lbs	8 x 6 x 6
<b>BATTERIES</b>				
80765-013	GROUP 26 500 CCA	PSS8	20 lbs	9 x 8 x 8
80765-010	GROUP 24 650 CCA	DR12/DE23/DE4040/DE50	20 lbs	11 x 8 x 9
<b>BATTERY HEATERS</b>				
300484-3		PSS8	3 lbs	8 x 8 x 4
350279-4		DR12/DE23/DE4040/DE50	5 lbs	14 x 8 x 5
<b>BATTERY CHARGER</b>				
352020-24A <sup>(1)</sup>	5 AMP	RP50	5 lbs	8 x 8 x 4
<b>WINCO PREMIUM FULL SYNTHETIC OIL</b>				
300515-31	5W-30	VARIES	5 lbs	9 x 9 x 6
300515-425	5W-40	VARIES	10 lbs	11 x 8 x 9
<b>FACTORY INSTALLED OPTIONS</b>				
352030-1	NFPA 110 LEVEL 1 COMPLIANT UPGRADE	DR12, RP50, DE MODELS	FACTORY INSTALLED	
72036-019	10 AMP BATTERY CHARGER W/ FAIL CONTACT	DR12, RP50, DE MODELS	FACTORY INSTALLED	
300507	GENERATOR STRIP HEATER	DR12, RP50, DE MODELS	FACTORY INSTALLED	
<b>DIGITAL CONTROLLER OPTIONS</b>				
358456-1	DSE2548 REMOTE ANNUNCIATOR	DSE7310	SHIPPED LOOSE	
358456-11	DSE2510 REMOTE DISPLAY	DSE7310	SHIPPED LOOSE	
N/A	DSE8610 DIGITAL CONTROLLER	DR175-DR350	FACTORY INSTALLED	
N/A	DSE8660 DIGITAL CONTROLLER	DSE8610	SHIPPED LOOSE	
352014-4	DSE890 WEBNET GATEWAY	DSE4510/DSE7310	FACTORY INSTALLED	
351112-18	DSE GSM ANTENNA	DSE890		
351112-19	DSE GPS ANTENNA	DSE890		
<b>TRAILERED ACCESSORIES</b>				
351282-901	MALE CAMLOCK PLUG - GREEN	CAMLOCK PACKAGE	SHIPPED LOOSE	
351282-902	MALE CAMLOCK PLUG - WHITE	CAMLOCK PACKAGE	SHIPPED LOOSE	
351282-903	MALE CAMLOCK PLUG - BLUE	CAMLOCK PACKAGE	SHIPPED LOOSE	
351282-904	MALE CAMLOCK PLUG - BLACK	CAMLOCK PACKAGE	SHIPPED LOOSE	
351282-905	MALE CAMLOCK PLUG - RED	CAMLOCK PACKAGE	SHIPPED LOOSE	
1000-0205	TOOL BOX	TRAILER	SHIPPED LOOSE	
97105-002	SPARE TIRE & RIM	TRAILER	SHIPPED LOOSE	
760060-010	SPARE TIRE MOUNT	TRAILER	SHIPPED LOOSE	

Notes: (1) Factory installed.



## AUTOMATIC TRANSFER SWITCHES



### 185 SERIES

Amps	Shipping			
	Weight NEMA 1	Weight NEMA 3R	Dimensions (in) NEMA 1	Dimensions (in) NEMA 3R
<b>NON-SERVICE ENTRANCE RATED</b>				
100	44 lbs	49 lbs	21 x 15 x 31	21 x 15 x 31
200	44 lbs	49 lbs	21 x 15 x 31	21 x 15 x 31
230	44 lbs	49 lbs	21 x 15 x 31	21 x 15 x 31
260	44 lbs	49 lbs	21 x 15 x 31	21 x 15 x 31
400	79 lbs	118 lbs	29 x 15 x 52	29 x 15 x 52
<b>SERVICE ENTRANCE RATED</b>				
100	61 lbs	45 lbs	23 x 15 x 44	23 x 15 x 44
200	61 lbs	45 lbs	23 x 15 x 44	23 x 15 x 44
400	177 lbs	144 lbs	41 x 13 x 52	41 x 13 x 52

### ASCO 185 SERIES ACCESSORIES

Part Number	Description
97714-406	STRIP HEATER W/ THERMOSTAT <sup>(1)</sup>
97714-408	14A/14B AUXILIARY CONTACTS <sup>(2)</sup>

Notes: (1) External 120V source required. (2) For 100/200 Amp only

ASCO is a leader when it comes to transfer switches. Manufactured by Schneider Electric, the same company that provides the world with their premium Square D circuit breakers. WINCO has been offering ASCO transfer switches for many years because of their strength and reliability.

# AUTOMATIC TRANSFER SWITCHES

## 300 SERIES

### 2-POLE SOLID NEUTRAL

Amps	NON-SERVICE ENTRANCE RATED				SERVICE ENTRANCE RATED			
	SHIP WEIGHT (lbs)		DIMENSIONS (in)		SHIP WEIGHT (lbs)		DIMENSIONS (in)	
	2-POLE NEMA 1	2-POLE NEMA 3R,4,12	NEMA 1	NEMA 3R,4,12	2-POLE NEMA 1	2-POLE NEMA 3R,4,12	NEMA 1	NEMA 3R,4,12
30	72	87	18x31x13	18x35x12	-	-	-	-
70	72	87	18x31x13	18x35x12	408	520	36x48x13	36x48x16
100	-	-	-	-	408	520	36x48x13	36x48x16
104	72	87	18x31x13	18x35x12	-	-	-	-
150	72	87	18x31x13	18x35x12	408	520	36x48x13	36x48x16
200	72	87	18x31x13	18x35x12	408	520	36x48x13	36x48x16
225	-	-	-	-	408	520	36x48x13	36x48x16
230	125	132	18x48x13	18x51x14	-	-	-	-
250	-	-	-	-	408	520	36x48x13	36x48x16
260	260	270	24x56x14	24x63x18	-	-	-	-
400	260	270	24x56x14	24x63x18	408	520	36x48x13	36x48x16
600	320	320	24x63x17	24x63x18	870	1,180	38x91x28	38x91x28
800	460	489	34x72x20	34x72x20	1,470	1,540	38x91x28	38x91x28
1,000	460	489	34x72x20	34x72x20	1,470	1,540	38x91x48	38x91x48
1,200	611	639	38x87x23	41x96x34	1,470	1,540	38x91x48	38x91x48

### 3-POLE SOLID & SWITCHED NEUTRAL

Amps	NON-SERVICE ENTRANCE RATED				SERVICE ENTRANCE RATED			
	SHIP WEIGHT (lbs)		DIMENSIONS (in)		SHIP WEIGHT (lbs)		DIMENSIONS (in)	
	3-POLE NEMA 1	3-POLE NEMA 3R,4,12	NEMA 1	NEMA 3R,4,12	3-POLE NEMA 1	3-POLE NEMA 3R,4,12	NEMA 1	NEMA 3R,4,12
30	75	90	18x31x13	18x35x12	-	-	-	-
70	75	90	18x31x13	18x35x12	420	530	36x48x13	36x48x16
100	-	-	-	-	420	530	36x48x13	36x48x16
104	75	90	18x31x13	18x35x12	-	-	-	-
150	75	90	18x31x13	18x35x12	420	530	36x48x13	36x48x16
200	75	90	18x31x13	18x35x12	420	530	36x48x13	36x48x16
225	-	-	-	-	420	530	36x48x13	36x48x16
230	133	148	18x48x13	18x51x14	-	-	-	-
250	-	-	-	-	420	530	36x48x13	36x48x16
260	340	350	24x56x14	24x63x18	-	-	-	-
400	340	350	24x56x14	24x63x18	420	530	36x48x13	36x48x16
600	340	350	24x63x17	24x63x18	880	1,200	38x91x28	38x91x28
800	543	565	34x72x20	34x72x20	1,480	1,560	38x91x28	38x91x28
1,000	543	565	34x72x20	34x72x20	1,480	1,560	38x91x48	38x91x48
1,200	1,160	1,189	38x87x23	41x96x34	1,480	1,560	38x91x48	38x91x48
1,600*	1,160	1,830	38x87x23	43x96x47	1,716	2,200	38x91x48	38x91x48
2,000*	1,160	1,830	38x87x23	43x96x47	1,716	2,200	38x91x48	38x91x48
2,500*	-	-	-	-	2,203	2,815	38x91x60	38x91x60
2,600*	1,495	2,230	38x91x72	41x96x74	-	-	-	-
3,000*	1,495	2,230	38x91x72	41x96x74	2,203	2,815	38x91x60	38x91x60

\* Not available in 3-Pole Switched Neutral



## 4-POLE SWITCHED NEUTRAL

Amps	NON-SERVICE ENTRANCE RATED				SERVICE ENTRANCE RATED			
	SHIP WEIGHT (lbs)		DIMENSIONS (in)		SHIP WEIGHT (lbs)		DIMENSIONS (in)	
	3-POLE NEMA 1	3-POLE NEMA 3R,4,12	NEMA 1	NEMA 3R,4,12	3-POLE NEMA 1	3-POLE NEMA 3R,4,12	NEMA 1	NEMA 3R,4,12
30	75	90	18x31x13	18x35x12	-	-	-	-
70	75	90	18x31x13	18x35x12	420	530	36x48x13	36x48x16
100	-	-	-	-	420	530	36x48x13	36x48x16
104	75	90	18x31x13	18x35x12	-	-	-	-
150	75	90	18x31x13	18x35x12	420	530	36x48x13	36x48x16
200	75	90	18x31x13	18x35x12	420	530	36x48x13	36x48x16
225	-	-	-	-	420	530	36x48x13	36x48x16
230	133	148	18x48x13	18x51x14	-	-	-	-
250	-	-	-	-	420	530	36x48x13	36x48x16
260	340	350	24x56x14	24x63x18	-	-	-	-
400	340	350	24x56x14	24x63x18	420	530	36x48x13	36x48x16
600	340	350	24x63x17	24x63x18	880	1,200	38x91x28	38x91x28
800	543	565	34x72x20	34x72x20	1,480	1,560	38x91x28	38x91x28
1,000	543	565	34x72x20	34x72x20	1,480	1,560	38x91x48	38x91x48
1,200	1,160	1,189	38x87x23	41x96x34	1,480	1,560	38x91x48	38x91x48
1,600*	1,160	1,830	38x87x23	43x96x47	1,716	2,200	38x91x48	38x91x48
2,000*	1,160	1,830	38x87x23	43x96x47	1,716	2,200	38x91x48	38x91x48
2,500*	-	-	-	-	2,203	2,815	38x91x60	38x91x60
2,600*	1,495	2,230	38x91x72	41x96x74	-	-	-	-
3,000*	1,495	2,230	38x91x72	41x96x74	2,203	2,815	38x91x60	38x91x60

## ASCO 300 SERIES - ATS ACCESSORIES

Part Number	Description
97714-484	11BE DELUXE ENGINE EXERCISER
97714-270	44A STRIP HEATER WIRED EXTERNAL
97714-478	44G STRIP HEATER WIRED TO THE LOAD
18RX	RELAY EXPANSION MODULE
1UP	UPS BACKUP POWER
34B	INHIBIT EMERGENCY MODE
62W	AUDIBLE ALARM
72EE	CONNECTIVITY MODULE

ASCO 4000 and 7000 Series  
are also available, call for pricing.



# MANUAL TRANSFER SWITCHES



## 300 SERIES

### 2-POLE SOLID NEUTRAL

Amps	NON-SERVICE ENTRANCE RATED					SERVICE ENTRANCE RATED				
	NEMA 1	NEMA 3RS	NEMA 3RXS	NEMA 4S	NEMA 4XS	NEMA 1	NEMA 3RS	NEMA 3RXS	NEMA 4S	NEMA 4XS
150	✓	✓	✓	✓	✓	✓	✓	✓	✓	✓
200	✓	✓	✓	✓	✓	✓	✓	✓	✓	✓
225	-	-	-	-	-	✓	✓	✓	✓	✓
230	✓	✓	✓	✓	✓	-	-	-	-	-
250	-	-	-	-	-	✓	✓	✓	✓	✓
260	✓	✓	✓	✓	✓	-	-	-	-	-
400	✓	✓	✓	✓	✓	✓	✓	✓	✓	✓
600	✓	✓	✓	✓	✓	✓	✓	✓	✓	✓
800	✓	✓	✓	✓	✓	✓	✓	✓	✓	✓
1000	✓	✓	✓	✓	✓	✓	✓	✓	✓	✓
1200	✓	✓	✓	-	-	✓	✓	✓	-	-

### 3-POLE SOLID & SWITCHED NEUTRAL

Amps	NON-SERVICE ENTRANCE RATED					SERVICE ENTRANCE RATED				
	NEMA 1	NEMA 3RS	NEMA 3RXS	NEMA 4S	NEMA 4XS	NEMA 1	NEMA 3RS	NEMA 3RXS	NEMA 4S	NEMA 4XS
150	✓	✓	✓	✓	✓	✓	✓	✓	✓	✓
200	✓	✓	✓	✓	✓	✓	✓	✓	✓	✓
225	-	-	-	-	-	✓	✓	✓	✓	✓
230	✓	✓	✓	✓	✓	-	-	-	-	-
250	-	-	-	-	-	✓	✓	✓	✓	✓
260	✓	✓	✓	✓	✓	-	-	-	-	-
400	✓	✓	✓	✓	✓	✓	✓	✓	✓	✓
600	✓	✓	✓	✓	✓	✓	✓	✓	✓	✓
800	✓	✓	✓	✓	✓	✓	✓	✓	✓	✓
1000	✓	✓	✓	✓	✓	✓	✓	✓	✓	✓
1200	✓	✓	✓	-	-	✓	✓	✓	-	-
1600*	✓	✓	✓	-	-	✓	✓	✓	-	-
2000*	✓	✓	✓	-	-	✓	✓	✓	-	-
2600*	✓	✓	✓	-	-	✓	✓	✓	-	-
3000*	✓	✓	✓	-	-	✓	✓	✓	-	-

\* Not available in 3-Pole Switched Neutral



# 4-POLE SWITCHED NEUTRAL

Amps	NON-SERVICE ENTRANCE RATED					SERVICE ENTRANCE RATED				
	NEMA 1 MSRP	NEMA 3RS MSRP	NEMA 3RXS MSRP	NEMA 4S MSRP	NEMA 4XS MSRP	NEMA 1 MSRP	NEMA 3RS MSRP	NEMA 3RXS MSRP	NEMA 4S MSRP	NEMA 4XS MSRP
150	✓	✓	✓	✓	✓	✓	✓	✓	✓	✓
200	✓	✓	✓	✓	✓	✓	✓	✓	✓	✓
225	-	-	-	-	-	✓	✓	✓	✓	✓
230	✓	✓	✓	✓	✓	-	-	-	-	-
250	-	-	-	-	-	✓	✓	✓	✓	✓
260	✓	✓	✓	✓	✓	-	-	-	-	-
400	✓	✓	✓	✓	✓	✓	✓	✓	✓	✓
600	✓	✓	✓	✓	✓	✓	✓	✓	✓	✓
800	✓	✓	✓	✓	✓	✓	✓	✓	✓	✓
1000	✓	✓	✓	✓	✓	✓	✓	✓	✓	✓
1200	✓	✓	✓	-	-	✓	✓	✓	-	-
1600	✓	✓	✓	-	-	✓	✓	✓	-	-
2000	✓	✓	✓	-	-	✓	✓	✓	-	-
2600	✓	✓	✓	-	-	✓	✓	✓	-	-
3000	✓	✓	✓	-	-	✓	✓	✓	-	-

## ASCO 300 SERIES - MTS ACCESSORIES

Part Number	Description
97714-270	44A STRIP HEATER WIRED EXTERNAL
97714-478	44G STRIP HEATER WIRED TO THE LOAD
QUICK CONNECTS	QUOTE ONLINE WWW.WINCOGEN.COM

# QUICK CONNECT PANELS

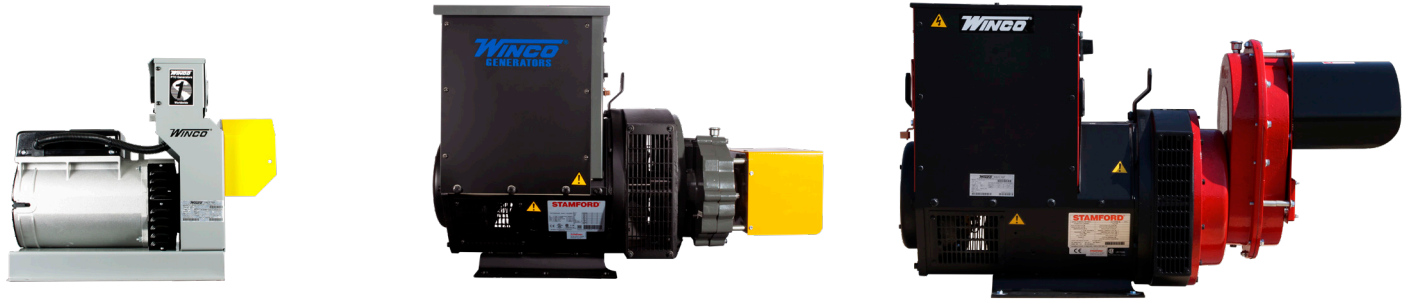
Amps	Poles	Mounting	Shipping		Enclosures
			Weight	Dimensions	
400	2	WALL	85 lbs	24 x 11 x 32	NEMA 3R
	3				NEMA3RX
	4				
800	2	WALL	95 lbs	24 x 11 x 32	NEMA 3R
	3				NEMA3RX
	4				
1200	2	FLOOR	475 lbs	35 x 28 x 56	NEMA 3R
	3				NEMA3RX
	4				
1600	2	FLOOR	495 lbs	35 x 28 x 56	NEMA 3R
	3				NEMA3RX
	4				
2000	3	PAD	205 lbs	31 x 50 x 39	NEMA 3R
	4				NEMA3RX
2400	3	PAD	VARIES BY AMPERAGE	48 x 50 x 39	NEMA 3R
	4				NEMA3RX
2800	3	PAD	VARIES BY AMPERAGE	48 x 50 x 39	NEMA 3R
	4				NEMA3RX
3200	3	PAD	VARIES BY AMPERAGE	48 x 50 x 39	NEMA 3R
	4				NEMA3RX
3600	3	PAD	VARIES BY AMPERAGE	48 x 50 x 39	NEMA 3R
	4				NEMA3RX
4000	3	PAD	VARIES BY AMPERAGE	48 x 50 x 39	NEMA 3R
	4				NEMA3RX

Please specify input or output panel when ordering.





# PTO



Model <sup>(1)</sup>	Output		PTO Input Speed RPM	Motor Starting <sup>(3)</sup>	Receptacles <sup>(4)</sup>			Shipping	
	Running Watts	Amps <sup>(2)</sup>			120 Volt	240 Volt	Full Power	Weight	Dimensions (in)
<b>1-PH 120/240</b>									
W10PTOS	10,000	42	515	3 HP	5-20R	-	14-60R	175 lbs	37 x 16 x 25
W15PTOS	15,000	62	515	5 HP	5-20R	-	14-60R	234 lbs	37 x 16 x 25
27PTOC4-03	27,600	115	540	10 HP	5-20R	6-50R	Anderson	476 lbs	46 x 29 x 28
27PTOT4-03	27,600	115	1000	10 HP	5-20R	6-50R	Anderson	476 lbs	46 x 29 x 28
50PTOC4-03	50,000	208	540	20 HP	5-20R	6-50R	Anderson	680 lbs	46 x 29 x 28
50PTOT4-03	50,000	208	1000	20 HP	5-20R	6-50R	Anderson	680 lbs	46 x 29 x 28
W70PTO-3	69,000	287	540	25 HP	5-20R	-	Anderson	978 lbs	55 x 29 x 32
W70PTOS-3	69,000	287	1000	25 HP	5-20R	-	Anderson	1,032 lbs	55 x 29 x 32
W85FPTOS-3	85,000	354	1000	35 HP	5-20R	6-50R	Anderson	1,072 lbs	55 x 29 x 32
W100FPTOS-3	100,000	416	1000	45 HP	5-20R	6-50R	Anderson	1,139 lbs	55 x 29 x 36
W150FPTOS-3	150,000	625	1000	60 HP	5-20R	6-50R	Hardwired	1,488 lbs	55 x 29 x 36
<b>3-PH 120/208</b>									
30PTOC4-04	31,600	87	540	11 HP	5-20R	6-50R	Anderson	570 lbs	46 x 29 x 28
30PTOT4-04	31,600	87	1000	11 HP	5-20R	6-50R	Anderson	570 lbs	46 x 29 x 28
50PTOC4-04	50,000	138	540	22.5 HP	5-20R	6-50R	Anderson	688 lbs	46 x 29 x 28
50PTOT4-04	50,000	138	1000	22.5 HP	5-20R	6-50R	Anderson	688 lbs	46 x 29 x 28
W75FPTOS-4	75,000	217	1000	30 HP	5-20R	-	Anderson	1,046 lbs	55 x 29 x 36
W105FPTOS-4	105,000	291	1000	50 HP	5-20R	6-50R <sup>(6)</sup>	Anderson	1,216 lbs	55 x 29 x 36
W145FPTOS-4	145,000	402	1000	70 HP	5-20R	6-50R <sup>(6)</sup>	Hardwired	1,482 lbs	55 x 29 x 36
<b>3-PH 120/240</b>									
30PTOC4-17	31,600	76	540	11 HP	5-20R	6-50R	Anderson	570 lbs	46 x 29 x 28
30PTOT4-17	31,600	76	1000	11 HP	5-20R	6-50R	Anderson	570 lbs	46 x 29 x 28
50PTOC4-17	50,000	120	540	22.5 HP	5-20R	6-50R	Anderson	745 lbs	46 x 29 x 28
50PTOT4-17	50,000	120	1000	22.5 HP	5-20R	6-50R	Anderson	745 lbs	46 x 29 x 28
W75FPTOS-17	78,000	217	1000	30 HP	5-20R	-	Anderson	1,046 lbs	55 x 29 x 32
W105FPTOS-17	105,000	253	1000	50 HP	5-20R	6-50R	Anderson	1,216 lbs	55 x 29 x 36
W145FPTOS-17	145,000	348	1000	70 HP	5-20R	6-50R	Hardwired	1,482 lbs	55 x 29 x 36

It isn't uncommon to find a 70 year old WINCO PTO generator still in service. That is possible because of WINCO's dedication to providing not only generators that work, but that last. Our in house, engineered and manufactured gearcases can withstand the test of time. We want you to be confident your home or farm will be powered with a safe, reliable generator that produces clean power.

Model <sup>(1)</sup>	Output		PTO Input Speed RPM	Motor Starting <sup>(3)</sup>	Receptacles <sup>(4)</sup>			Shipping	
	Running Watts	Amps <sup>(2)</sup>			120 Volt	240 Volt	Full Power	Weight	Dimensions (in)
<b>3-PH 277/480</b>									
35PTOC4-18	36,000	54	540	12 HP	-	-	Anderson	570 lbs	46 x 29 x 28
35PTOT4-18	36,000	54	1000	12 HP	-	-	Anderson	570 lbs	46 x 29 x 28
55PTOC4-18	55,000	66	540	25 HP	-	-	Anderson	745 lbs	46 x 29 x 28
55PTOT4-18	55,000	66	1000	25 HP	-	-	Anderson	745 lbs	46 x 29 x 28
W85PTOS-18	85,000	102	1000	35 HP	-	-	Anderson	1,046 lbs	55 x 29 x 32
W120FPTOS-18	120,000	144	1000	50 HP	-	-	Anderson	1,216 lbs	55 x 29 x 36
W165FPTOS-18	165,000	198	1000	70 HP	-	-	Anderson	1,516 lbs	55 x 29 x 36

### 3-PH 346/600

35PTOC4-21	36,000	43	540	12 HP	-	-	Anderson	570 lbs	46 x 29 x 28
35PTOT4-21	36,000	43	1000	12	-	-	Anderson	570 lbs	46 x 29 x 28
55PTOC4-21	55,000	53	540	25 HP	-	-	Anderson	682 lbs	46 x 29 x 28
55PTOT4-21	55,000	53	1000	25 HP	-	-	Anderson	682 lbs	46 x 29 x 28
W85FPTOS-21	85,000	82	1000	35 HP	-	-	Anderson	1,046 lbs	55 x 29 x 32
W120FPTOS-21	120,000	115	1000	50 HP	-	-	Anderson	1,216 lbs	55 x 29 x 36
W165FPTOS-21	165,000	159	1000	70 HP	-	-	Anderson	1,516 lbs	55 x 29 x 36

NOTES: (1) Required HP at PTO of tractor for full rated output. Each 2 HP of tractor power equals approximately 1 kW of electric power. (2) 1.0 power factor (3) Code G capacitor start motor. (4) All receptacles are NEMA coded.

## PTO ACCESSORIES

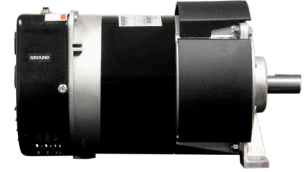
Description	Compatible Model	Shipping	
		Weight	Dimensions (in)
<b>PTO TRAILERS</b>			
TDM76	10kW - 15kW	60 lbs	36 x 16 x 10
TDM80	27kW - 50kW	186 lbs	60 x 33 x 10
TDM77	70kW - 165kW	324 lbs	52 x 18 x 37
<b>THREE POINT HITCH</b>			
TPH250	10kW - 15kW	79 lbs	34.5 x 30.5 x 5
TPH260	27kW - 55 kW	194 lbs	46 x 32 x 14
<b>PTO SHAFTS</b>			
SA11310 540 RPM (1 3/8" 6-spline x 1 3/8" 6-spline)	10kW - 15kW	24 lbs	49 x 9 x 9
SA12300 540RPM (1 3/4" 20-spline x 1 3/8" 6-spline)	70kW	54 lbs	50 x 8 x 9
54326-001 540 RPM (1 3/8" 6-spline x 1 3/8" 6-spline)	27kW - 55kW	40 lbs	49 x 9 x 9
54961-000 1000 RPM (1 3/8" 6-spline x 1 3/8" 21-spline)	27kW - 55kW	58 lbs	50 x 8 x 9
SA12310 (1 3/4" 20-spline x 1 3/4" 20-spline)	70kW - 145kW	54 lbs	50 x 8 x 7
SA12311 (1 3/4" 20-spline x 1 3/8" 21-spline)	70kW - 145kW	56 lbs	50 x 8 x 7
SA12320 (1 3/4" 20-spline x 1 3/4" 20-spline)	150kW - 165kW	65 lbs	50 x 8 x 7
300228 540 RPM (1 3/8" 6-spline x 1 3/8" 6-spline)	TPH250	25 lbs	50 x 8 x 8
54327-000 540 RPM (1 3/8" 6-spline x 1 3/8" 6-spline)	TPH260	40 lbs	50 x 8 x 8
54328-000 1000 RPM (1 3/8" 6-spline x 1 3/8" 21-spline)	TPH260	40 lbs	50 x 8 x 8
<b>PLUG IN VOLT METER</b>			
120V	120V RECEPTACLE	1 lbs	8 x 6 x 6
<b>SQUARE D MANUAL TRANSFER SWITCH</b> manufactured by Schneider Electric			
100AMP 240V 2-POLE	SINGLE PHASE UNITS	37 lbs	33 x 12 x 10
200AMP 240V 2-POLE	SINGLE PHASE UNITS	70 lbs	34 x 23 x 11
100AMP 208/240V 3-POLE	THREE PHASE UNITS	40 lbs	33 x 12 x 10
200AMP 208/240V 3-POLE	THREE PHASE UNITS	80 lbs	34 x 26 x 11
200AMP 480/600V 3-POLE	480V & 600V UNITS	110 lbs	32 x 25 x 12



# 2-BEARING

## 3600 RPM

Model	Output		Motor Starting	Receptacles		Shipping	
	Running Watts	Amps		120V	240V	Weight	Dimensions (in)
TB2400	2,400	20	1 HP	5-20R	-	38 lbs	18 x 12 x 12
TB4800	4,800	20	1.5 HP	5-20R	L14-30R	54 lbs	18 x 12 x 12
TB7200	7,200	30	3.5 HP	-	L14-30R	78 lbs	20 x 12 x 12



## 1800 RPM

Model	Part Number		Watts @ 125/40C			Ship Weight
	Winding 6	Winding311	06 240V 1-PH	311 208/240V 3-PH	311 480V 3-PH	
PI044D	350027-008	350027-014	7,500	7,500	7,500	201 lbs
PI044E	350027-018	350027-011	10,000	10,000	10,000	222 lbs
PI044F	350027-019	350027-015	12,500	12,000	12,500	232 lbs
PI044G	350027-013	350027-016	15,000	15,000	15,000	247 lbs
PI044H	350027-007	350027-000	17,500	16,800	17,500	271 lbs
PI144D	3500237-21	350027-001	21,000	20,000	20,000	301 lbs
PI144E	350027-012	350027-002	25,000	24,000	25,000	333 lbs
PI144F	350027-009	350027-003	27,500	26,400	27,500	352 lbs
PI144G	350027-022	350027-004	30,000	30,000	30,000	388 lbs
PI144H	350027-023	350027-017	35,000	35,000	35,000	416 lbs
PI144J	350027-024	350027-005	40,000	38,000	40,000	441 lbs
PI144K	350027-025	350027-006	42,000	44,000	44,000	461 lbs
UCI224C	351810-16	351810-13	37,500	44,000	44,000	590 lbs
UCI224D	351810-17	351810-6	44,000	50,000	52,000	623 lbs
UCI224E	351810-18	351810-7	50,000	56,000	60,000	676 lbs
UCI224F	351810-19	351810-14	60,000	68,000	75,000	754 lbs
UCI224G	351810-20	35181015	75,000	80,000	83,000	838 lbs
UCI274C	351811-17	351811-14	90,000	96,000	100,000	906 lbs
UCI274D	351811-18	351811-15	100,000	105,000	117,000	963 lbs
UCI274E	351811-19	351811-16	115,000	128,000	143,000	1,090 lbs
UCI274F	351811-20	351811-12	135,000	144,000	165,000	1,188 lbs
UCI274G	351811-22	351811-13	150,000	160,000	185,100	1,299 lbs
S4L1SC	-	351811-200	-	230,000	252,000	2,083 lbs
S4L1SD	-	351811-201	-	275,000	300,000	2,227 lbs
S4L1SE	-	351811-202	-	320,000	352,000	2,425 lbs
S4L1SF	-	351811-203	-	364,000	400,000	2,712 lbs
HCI534C	-	351811-204	-	420,000	475,000	3,075 lbs
HCI534D	-	351811-205	-	460,000	515,000	3,274 lbs
HCI534E	-	351811-206	-	545,000	600,000	3,605 lbs
HCI534F	-	351811-207	-	590,000	660,000	3,924 lbs
HCI634G	-	351811-208	-	700,000	800,000	4,473 lbs
HCI634H	-	351811-209	-	820,000	900,000	4,806 lbs
HCI634J	-	351811-210	-	920,000	1,040,000	5,135 lbs
HCI634K	-	351811-211	-	1,020,000	1,150,000	5,781 lbs

NOTES: Pricing is the same for single bearing generator ends; P series would be subbed with S series of equal or greater kW.

**SINGLE-BEARING GENERATORS AVAILABLE**



# **WINCO<sup>®</sup>** **GENERATORS**



An American Company

[www.wincogen.com](http://www.wincogen.com)

225 S Cordova Ave • Le Center, MN 56057 • 507-357-6821