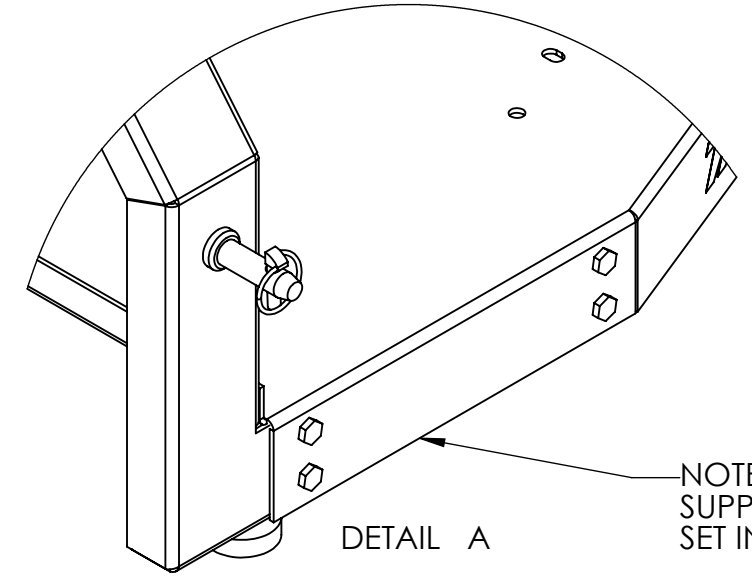
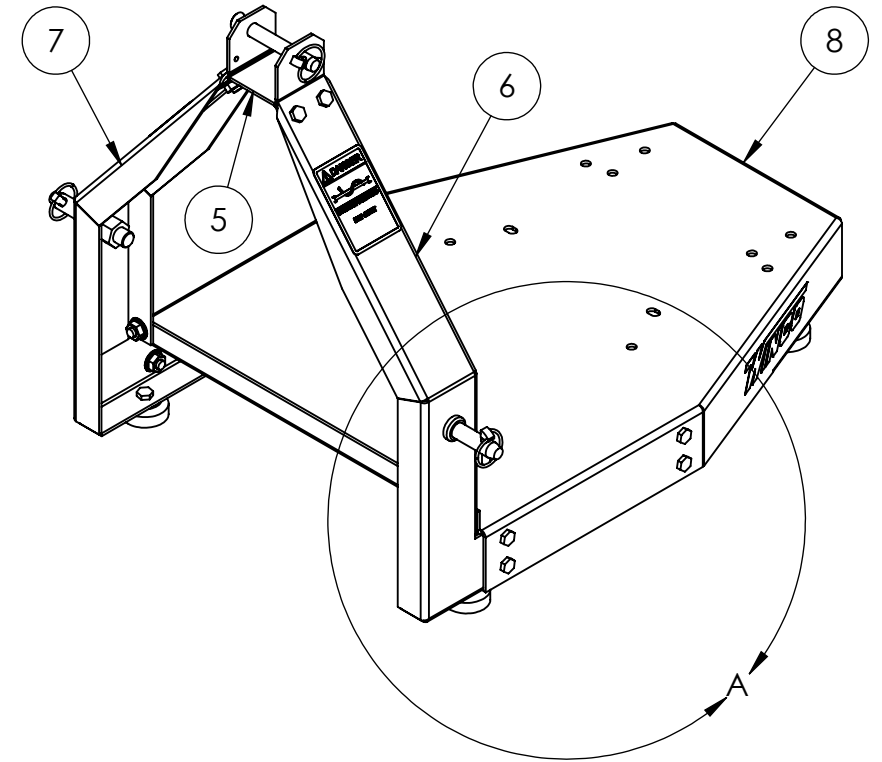
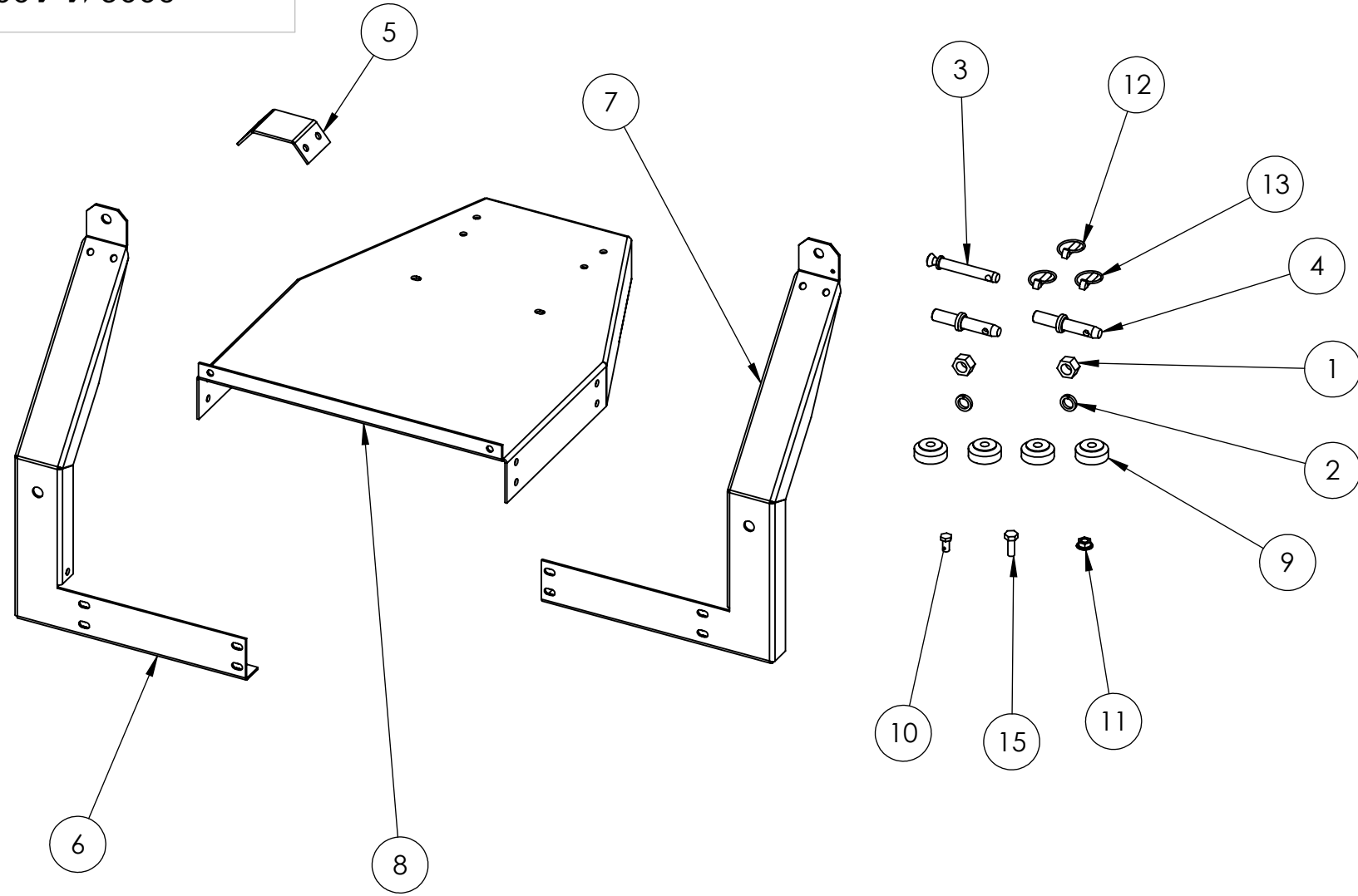


300241-100

| REVISIONS | | | | | |
|-----------|------|---|-----------|-----|-------|
| REV. | IRN | DESCRIPTION | DATE | BY | APP'D |
| B | 2408 | UPDATED MODEL INFO. ON PRINT | 1/2/2014 | PJY | DRC |
| C | 2447 | ADDED SHEET METAL KIT INFO. FOR SHEET METAL PARTS | 1/21/2014 | PJY | DRC |



* - PARTS ARE IN SHEET METAL KIT 300240-8

| BOM Table | | | |
|-----------|------------|-----------------------------|------|
| ITEM NO. | PartNo | DESCRIPTION | QTY. |
| 1 | 350470 | HEX NUT 7/8-14NF | 2 |
| 2 | 350020 | LOCK WASHER 7/8" | 2 |
| 3 | 300209 | PIN, TOP LINK | 1 |
| 4 | 300208 | PIN, DRAW | 2 |
| 5 | * 300240-4 | ARM TIE | 1 |
| 6 | * 300240-3 | RIGHT SIDE SUPPORT | 1 |
| 7 | * 300240-2 | LEFT SIDE SUPPORT | 1 |
| 8 | * 300240-1 | BASE | 1 |
| 9 | 300212 | ISOLATOR, NEOPRENE, 40 DURO | 4 |
| 10 | 48178-000 | HHCS 1/2-13 X 1 | 18 |
| 11 | 16248-001 | .5-13 FLANGE NUT | 22 |
| 12 | 300211 | LYNCH PIN W/ CHAIN | 1 |
| 13 | 300210 | LYNCH PIN | 2 |
| 14 | 300228 | TUMBLE BAR | 1 |
| 15 | 57580-000 | .5-13X1.5 HHCS | 4 |

ASSEMBLY

1. MOUNT RUBBER FEET TO BOTTOM OF SUPPORT ARMS AND BASE (#'S 6,7,8) WITH 1" BOLT AND FLANGE NUT.
2. ASSEMBLE LEFT AND RIGHT SUPPORT ARMS (ITEM #'S 6 & 7) WITH ARM TIE (ITEM #5) AND SUPPLIED HARDWARE (LEAVE BOLTS LOOSE)
3. ASSEMBLE BASE ONTO SUPPORT ARMS ACCORDING TO DETAIL "A" WITH 1" BOLTS AND FLANGE NUTS
4. GO BACK AND TIGHTEN ARM TIE TO SUPPORT ARMS
5. MOUNT DRAW PINS (#4) TO SUPPORT ARMS (LOCK WASHER PLACED INSIDE ARMS)
6. ATTACH LYNCH PIN W/ CHAIN TO LEFT SUPPORT ARM (#7)

MOUNTING GENERATOR TO BASE

1. ATTACH HITCH KIT TO TRACTOR
2. SET GENERATOR ONTO BASE AND SLIDE MOUNTING BOLTS (ITEM #15) INTO HOLES.
3. RAISE HITCH KIT TO A DESIRED LEVEL TO THREAD NUTS (ITEM #11) ONTO MOUNTING BOLTS
4. TORQUE MOUNTING BOLTS TO 40FT. LBS

| UNLESS OTHERWISE SPECIFIED | | ANGULAR | | MACHINED SURFACE TEXTURE | | ALL DIMENSIONS GIVEN IN INCHES WORK TO DIMENSIONS FLAT OUTSIDE VIEW SHOWN UNLESS NOTED -DO NOT SCALE- | | | |
|----------------------------|------|------------|----------|--------------------------|-----------|---|-------|--|--|
| FRACTIONS | | 1.5 | | | | | | | |
| 1 PLACE DEC. | .1 | | | | | | | | |
| 2 PLACE DEC. | .015 | | | | | | | | |
| 3 PLACE DEC. | .005 | | | | | | | | |
| DRAWN BY | | DATE | CHK'D BY | DATE | ENG APPR. | DATE | SCALE | | |
| RLC | | 10/11/2010 | | | | | | | |
| MATERIAL: | | | | TITLE: | | | | | |
| FINISH: | | | | TPH241 INSTRUCTION SHEET | | | | | |
| ASSY: | | | | PART NO. | | 300241-100 | | | |
| MODEL: | | TPH241 | | WINGCO® | | | | | |

THIS DRAWING CONTAINS PROPRIETARY INFORMATION BELONGING TO WINCO. UNAUTHORIZED USE IS PROHIBITED