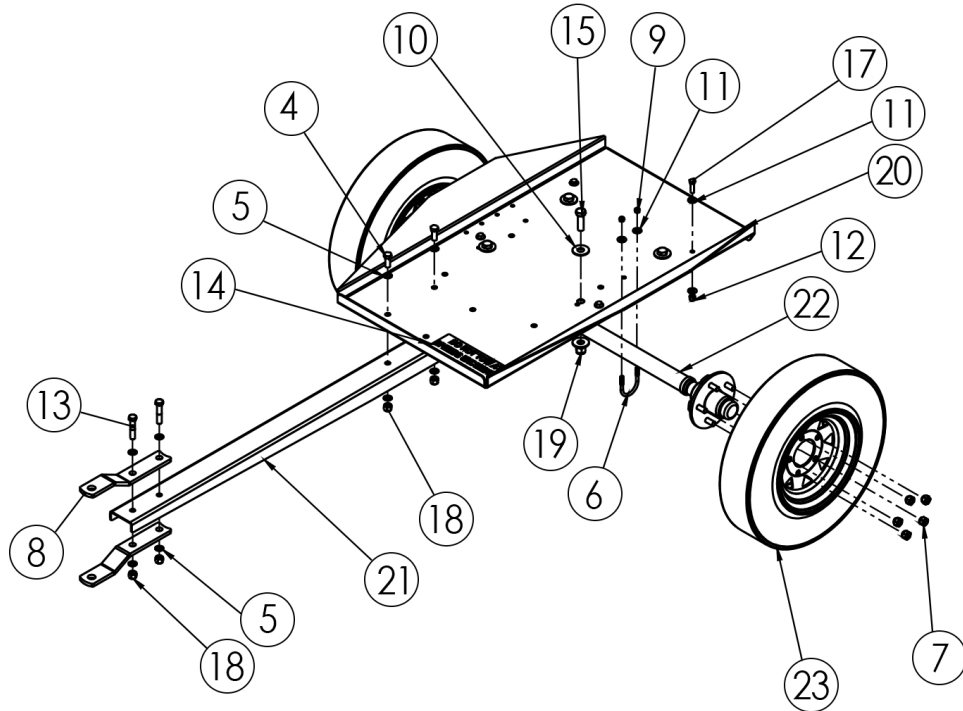


### REQUIRED TOOLS:

TAPE MEASURE

### SOCKET & WRENCH SIZES:

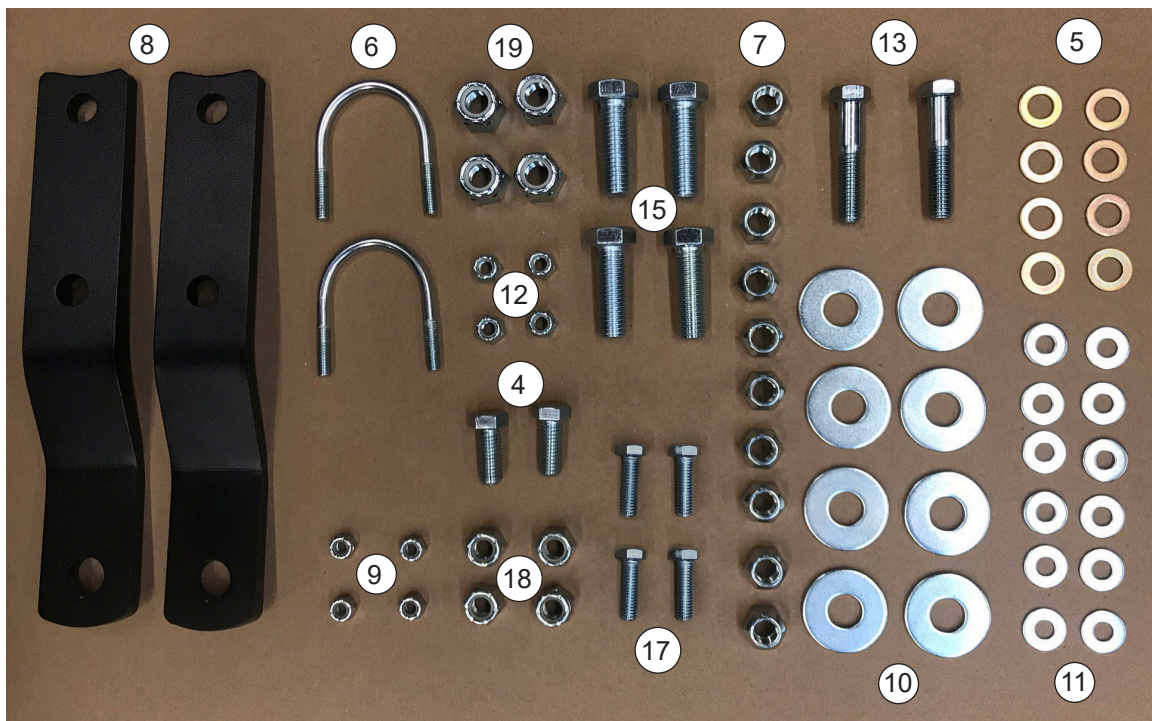
- 1/2 IN
- 9/16 IN
- 3/4 IN
- 13/16 IN
- 9/16"
- 24 mm



Item No.	Part Number	Description	Qty
4	1516-000	.5-12 x 1.25 HHB	2*
5	21867-001	Flat Washer .51 x .88 x .05	8*
6	252003010	U-Bolt 5/16 x 1.5 Plated	2*
7	252003060	Lug Nut 1/2-20 Hex	10*
8	252101030	Tongue, End	2
9	47136-000	Hex Nut .3125-18 Nylock	4*
10	515-000	Flat Washer 5/8 x 1.75	8*
11	526-000	ID .375 OD .890 TH .057	12*
12	56864-000	Elastic Stop Nut .375-16	4*
13	57580-001	HHCS 1/2-13 x 2 1/2 GR 5	2*
14	64006-000	Decal - PTO Trailer	1
15	91083-004	.625-11 x 2 HHCS GR 5	4*
17	91658-002	HHCS 3/8-16 x 1.25	4*
18	92242-000	Nut Hex .500-13 Nylock	4*
19	95468-000	.625-11 Nylock	4*
20	97102-001	TDM80 Trailer Base	1
21	97102-002	TDM80 Trailer Tongue	1
22	97104-000	Axle Assembly 2000 lbs	1
23	97105-000	Tire & Wheel Assembly (13" Tire)	2

\* Located in Parts Bag

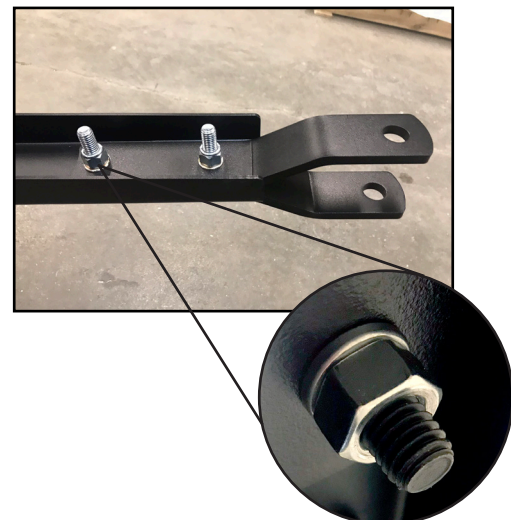
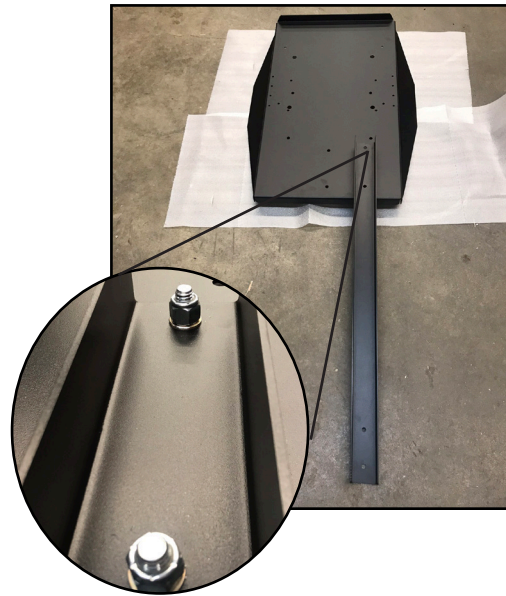
# PARTS BAG



Item No.	Part Number	Description	Qty
4	1516-000	.5-12 x 1.25 HHB	2*
5	21867-001	Flat Washer .51 x .88 x .05	8*
6	252003010	U-Bolt 5/16 x 1.5 Plated	2*
7	252003060	Lug Nut 1/2-20 Hex	10*
8	252101030	Tongue, End	2
9	47136-000	Hex Nut .3125-18 Nylock	4*
10	515-000	Flat Washer 5/8 x 1.75	8*
11	526-000	ID .375 OD .890 TH .057	12*
12	56864-000	Elastic Stop Nut .375-16	4*
13	57580-001	HHCS 1/2-13 x 2 1/2 GR 5	2*
15	91083-004	.625-11 x 2 HHCS GR 5	4*
17	91658-002	HHCS 3/8-16 x 1.25	4*
18	92242-000	Nut Hex .500-13 Nylock	4*
19	95468-000	.625-11 Nylock	4*
* Located in Parts Bag			

# STEP 1

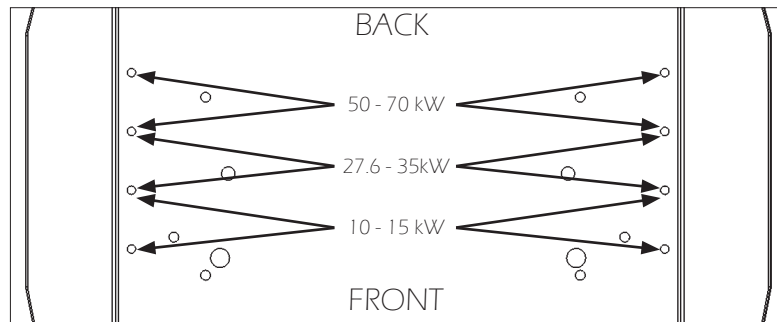
- With the trailer base (20) bottom side up, based upon the generator, place the trailer tongue (21) on the trailer base. The tongue tapers, ensure the wide end is attached to the trailer base.
- The placement of the tongue is determined by the location of the generator's shaft. If the gearbox is vertical on the generator install the tongue centered on the trailer. If the gearbox is offset install the tongue to the right side so that the generator input shaft aligns with the tractor output.
- Using the 2 1516-000 (4) and 2 of the 21867-001 (5), secure the tongue to the trailer base with the 92242-000 (18) Nylock nut. Note the bolt head will be on the top side of the trailer base. See illustration.
- The tongue ends (8) will bolt to the on the end of the tongue. The 57580-001 (13) will go through 21867-001 (5), then through the tongue (21), then another 21867-001 (5) and secured with 92242-000 (18). Ensure the tongue ends are straight and the holes line up.
- Turn the trailer base with the top side up.



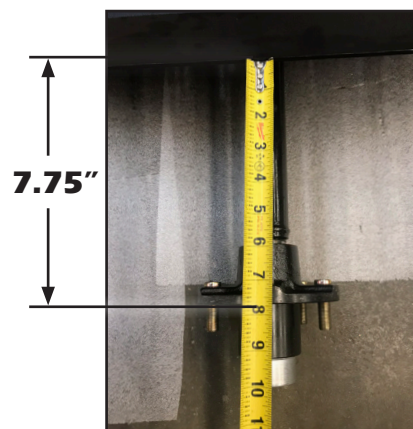
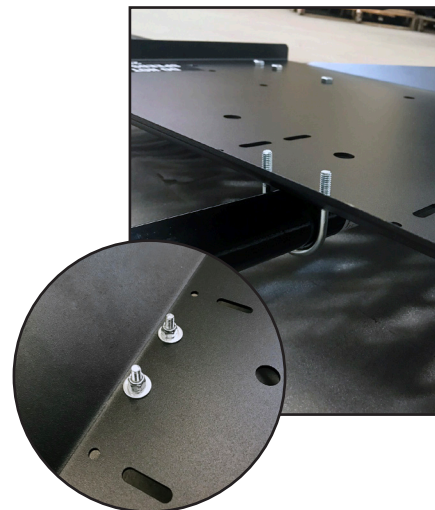
## STEP 2

- Now install the axle (22).

\*The generator you have will determine the axle position for proper balance.



- Place the Axle (22) under the trailer base (20). Place a U-Bolt (6) under the axle and through the determined holes.
- Place a 526-000 washer (11) over each ends of the U-Bolt and screw on the 47136-000 Nylock nuts (9). Do not fully tighten the nuts. Attached the other U-Bolt around the axle on the other side of the trailer base.
- Before tightening the U-Bolts to the trailer, the axle needs to be centered. Using a tape measure, move the base to the point each side is measuring 7.75" from the axle hub to the trailer base edge. See illustration.
- Once centered, securely tighten the 47136-000 Nylock nuts (9) to the U-Bolt (6).



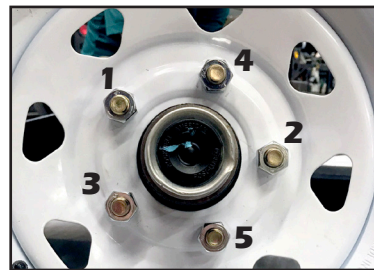


## STEP 3

- Install the wheel (23) to the hub and secure each lug (7).



Pro Tip: Tighten lugs in a star pattern, until each lug is secure.

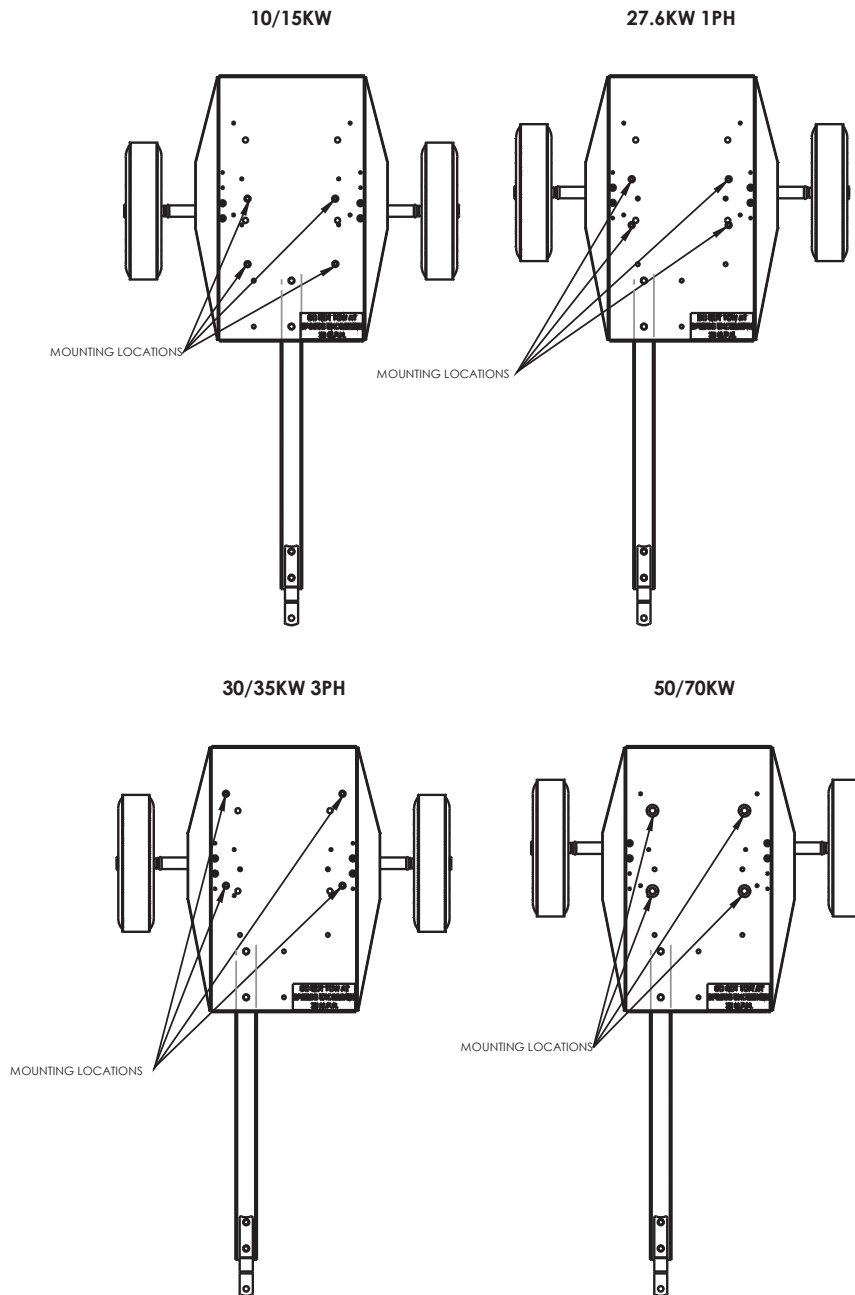


## Completed Trailer



# STEP 4

- The trailer base has dedicated holes for certain model generators to be installed. See drawing to determine where to install your generator.



- For the W10PTOS, W15PTOS, 27PTOC4, 30PTOC4, and 35PTOC4, you will need 4 of the 91658-002 (17) bolts, 8 of the 526-000 (11) washers and 4 of the 56864-000 (12) elastic stop nuts.
- For the 50PTOC4, 55PTOC4, W70PTO, and W70PTOS models, you will need the 91083-004 (15) bolts, 515-000 (10) washers, and 95468-000 (19) nylock nuts.