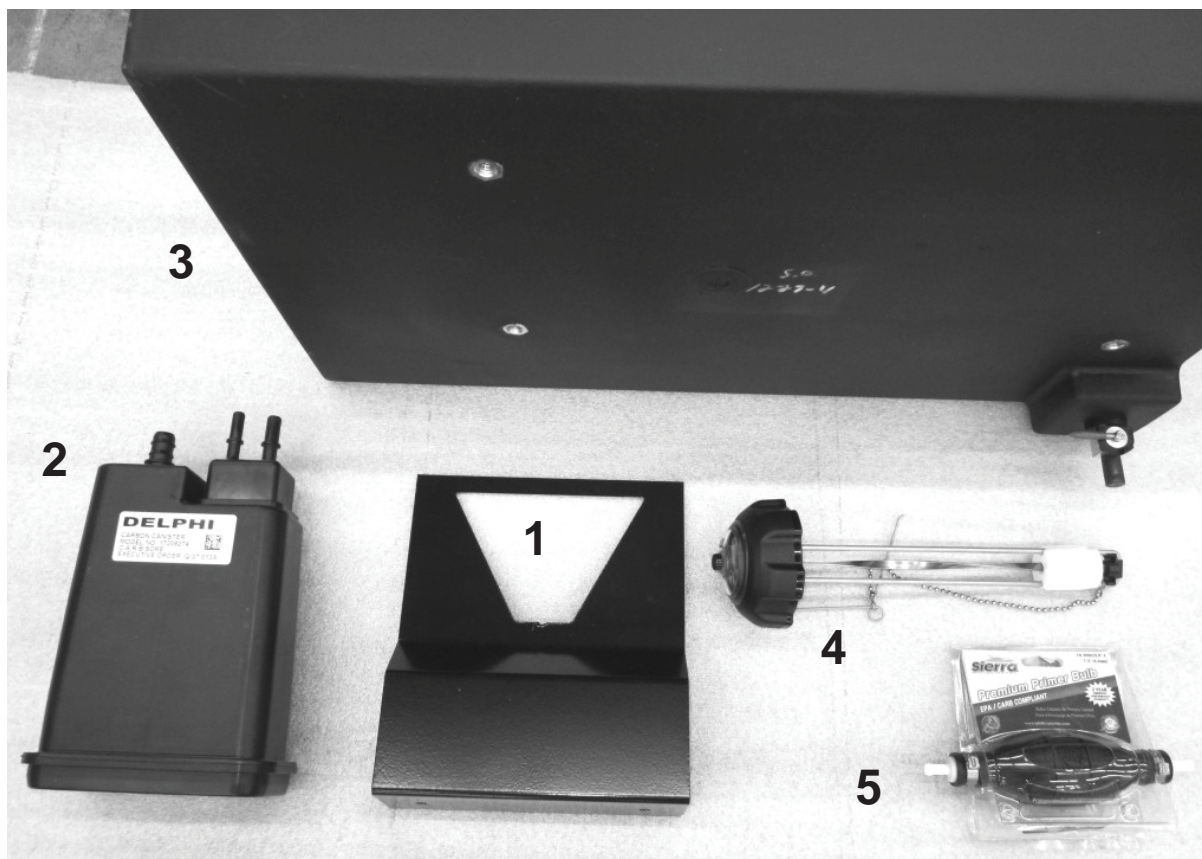


WINCO INC[®]

*A Division of **DTE** Dyna Technology Inc*

INSTALLATION INSTRUCTIONS FUEL TANK KIT EC18000VE & EC22000VE



COMPONENT LIST

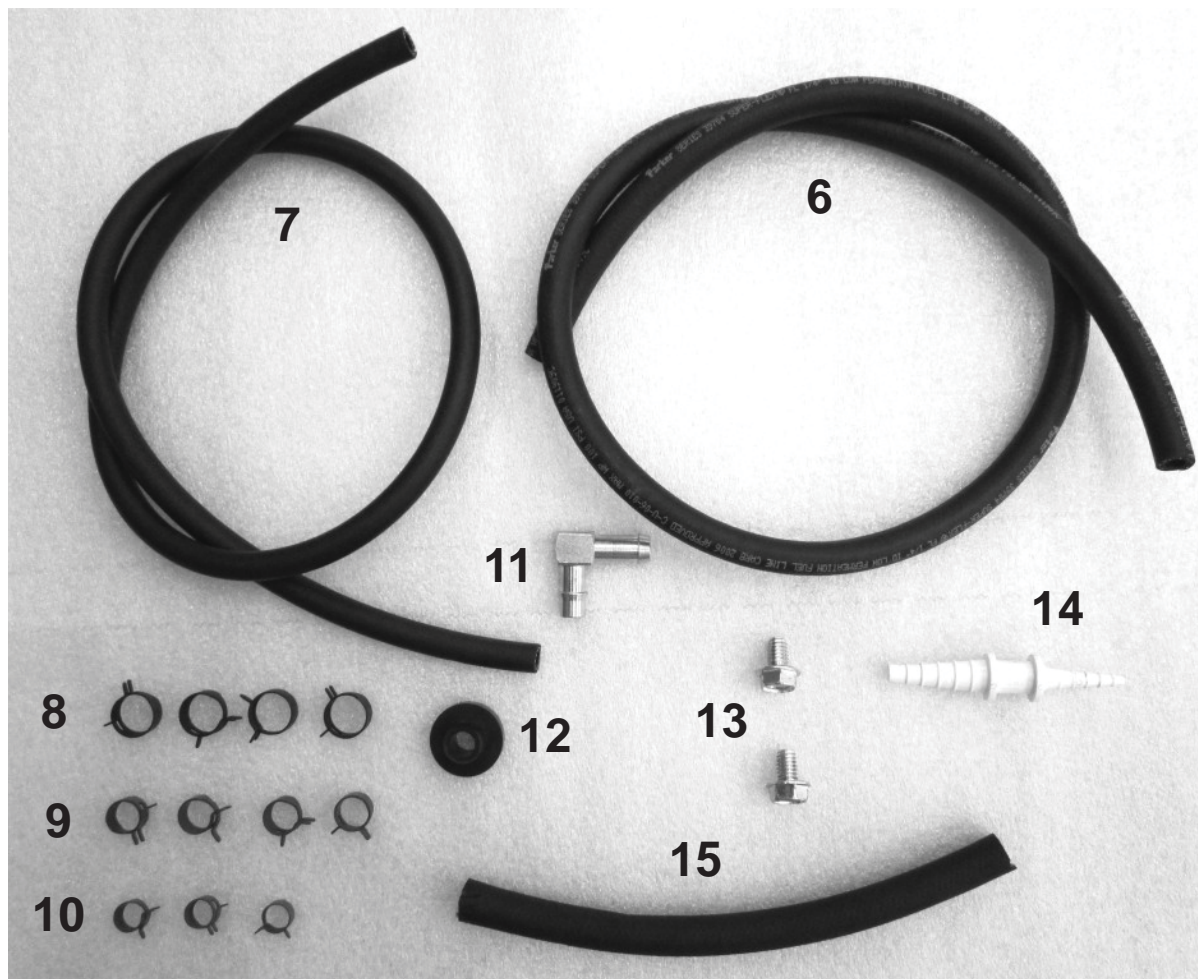
REF. #	PART #	DESCRIPTION	QTY.
1	81900-001	Carbon Canister Bracket	1
2	80900-000	Carbon Canister	1
3	16316-001	15 Gallon Fuel Tank	1
4	62397-001	Fuel Cap with Gauge	1
5	62391-000	Primer Bulb	1
NOT SHOWN	19018-411	Bag of Parts	1

CUSTOMER SUPPLIED 1/4" AND 5/16" FUEL HOSE CONNECTED TO THE FUEL TANK IS NOT PROVIDED IN THIS KIT.

STEP 1

- Account for all components, hardware and fasteners.

FASTENERS & MISC. COMPONENTS (not shown in actual size)

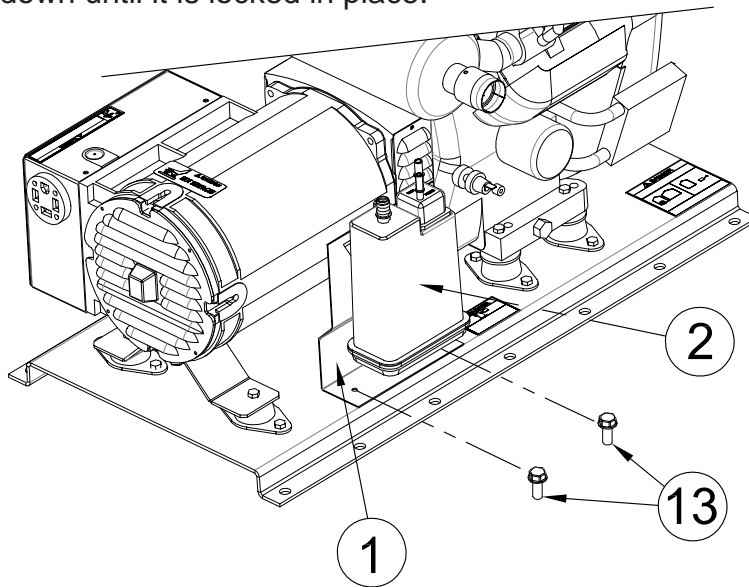


HARDWARE & FASTENER LIST

REF #	PART #	DESCRIPTION	QTY
6	40078-000	1/4" Fuel Hose	36"
7	40077-000	3/16" Fuel Hose	34"
8	62999-004	Black Hose Clamp .69" OD	4
9	62999-001	Red Hose Clamp .5"OD	4
10	62999-005	Green Hose Clamp .41" OD	3
11	98435-001	Hose Fitting Elbow	1
12	62409-000	Bushing	1
13	62173-001	5/16" Self-Tapping Screw	2
14	98590-003	1/8" - 5/16" X 1/4" - 7/16" Hose Reducer	1
15	40079-000	5/16" Fuel Hose	8"

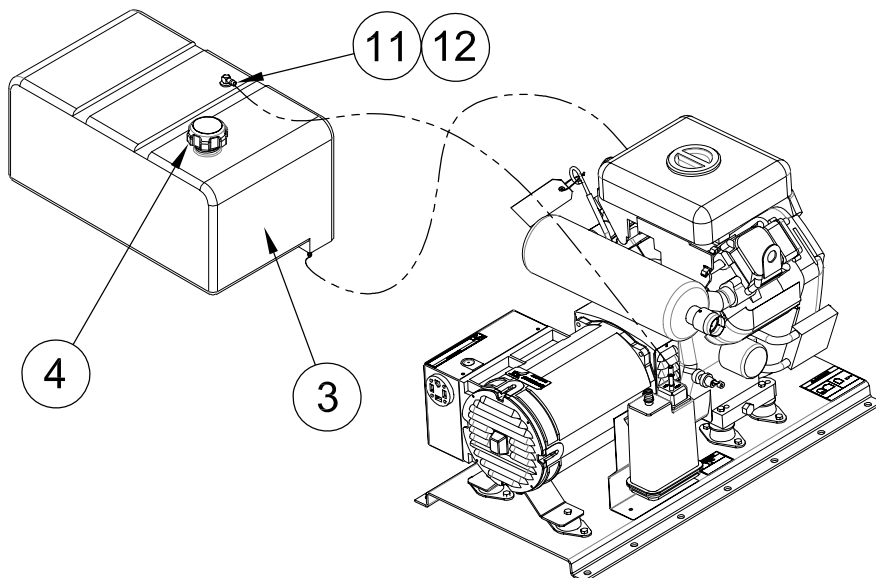
STEP 2

- Attach the carbon canister bracket (ref. 1) using the two self-tapping screws (ref.13)
- Slide the carbon canister (ref. 2) up into the carbon canister bracket (ref.1) and then slide it down until it is locked in place.



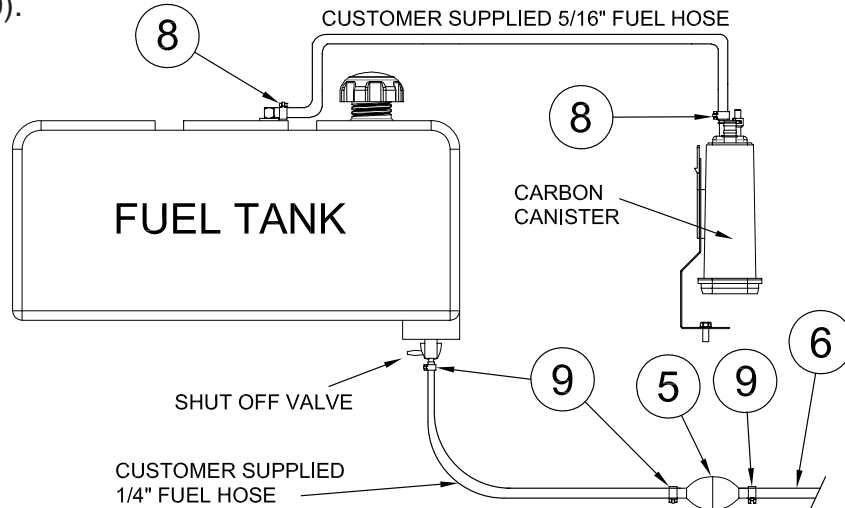
STEP 3

- Mount fuel tank (ref. 3) in a suitable location to ensure proper flow of fuel. The fuel tank must be mounted to a bracket to allow access to the shut-off valve. Bolt holes are provided on the bottom of the fuel tank for mounting to a stable structure. Use 3/8-16 X ? bolts. The length will vary depending on the mounting structure. **NOTE:** When mounting the fuel tank below the level of the engine an additional fuel pump may be required for a lift of 3 feet or more from the bottom of the fuel tank to the fuel pump on the engine. Hose lengths may have to be adjusted for your application.
- Install bushing (ref. 12) and hose fitting elbow (ref. 11) into the top of the fuel tank.
- Install fuel cap with gauge (ref.4) on top of the fuel tank.



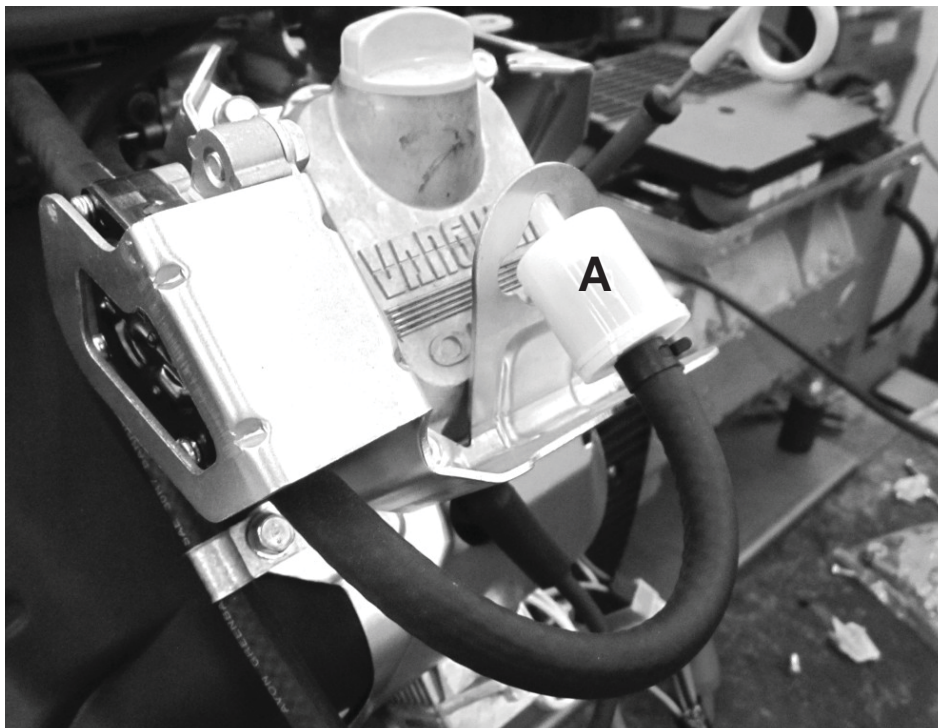
STEP 4

- Route customer supplied 1/4" fuel line from fuel tank to engine and attach the fuel line to the primer bulb (ref. 5) with red hose clamps. Attach 1/4" fuel hose (ref. 6) to the other side of the primer bulb (ref. 5) with red hose clamp (ref. 9) and route to the fuel filter (ref. A) on the engine. See step 5 below.
- Attach 1/4" fuel hose (ref. 6) to the fuel filter (ref. A) on the engine using red hose clamp (ref. 9).



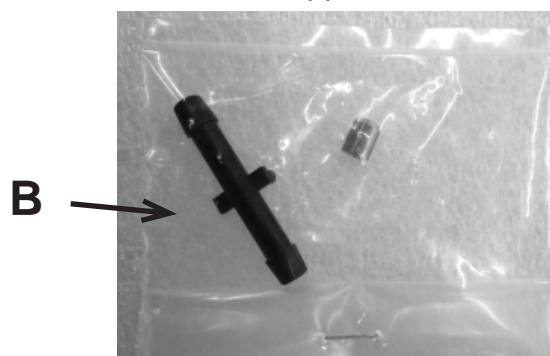
STEP 5

- Below is your fuel supply connection point on the engine. Fuel filter (ref. A) is where you connect the fuel line (ref. 6) from Step 4.
- **NOTE:** Each installation may vary. Your fuel line lengths may vary depending on your installation requirements.
- **DANGER:** *Do not allow fuel lines to lay directly on "HOT" surfaces! This may cause a fire.*



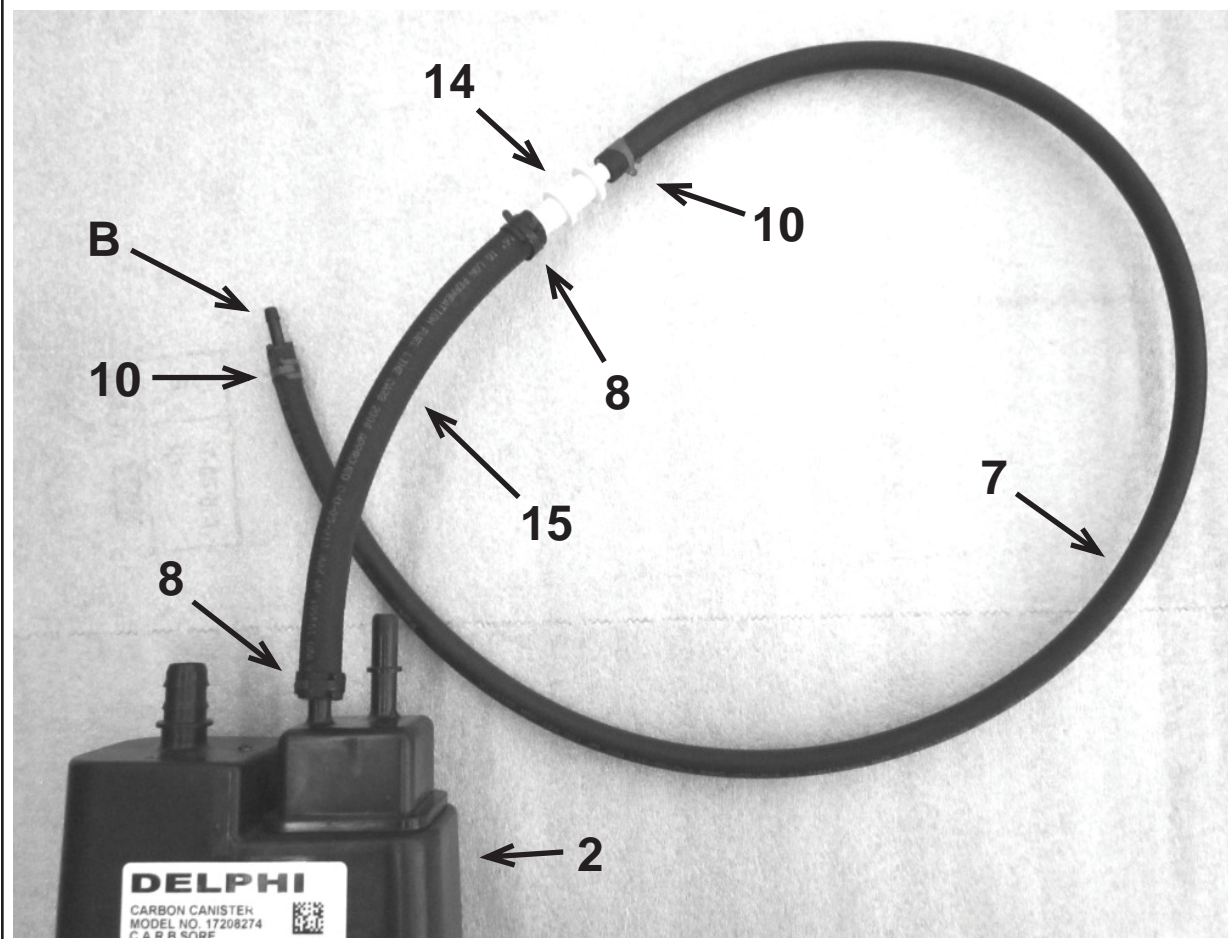
STEP 6

- Locate the small plastic bag that came with the Briggs & Stratton engine operators manual. You will use the plastic connector (ref. B) in step 6. You can discard the other part as it is not needed in this application.



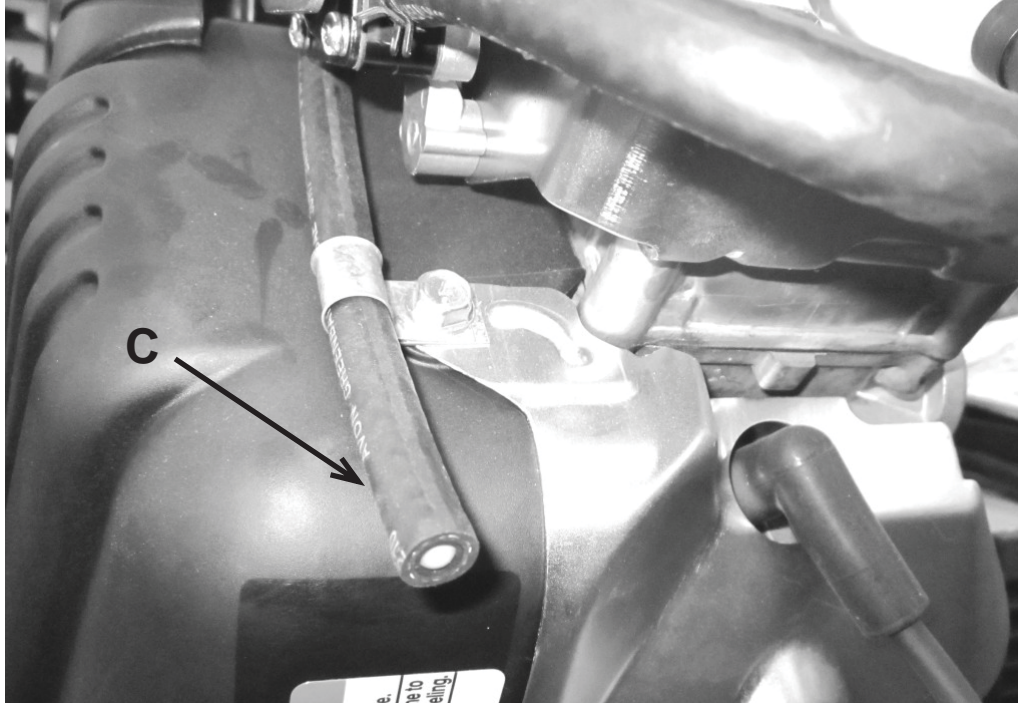
STEP 7

- Slide black hose clamps (ref. 8) onto 5/16" fuel hose (ref. 15) by compressing them with a pliers. Push hose (ref. 8) onto carbon canister nipple marked PURGE and move the clamp into position at the end of the hose.
- Twist and push hose reducer (ref. 14) onto hose (ref. 15) and move clamp into position at the end of the hose. **NOTE:** You can use a small amount of vegetable oil on the hoses to ease in their connection.
- Repeat process for 3/16" hose (ref. 7). This will connect to the engine hose in step 8.



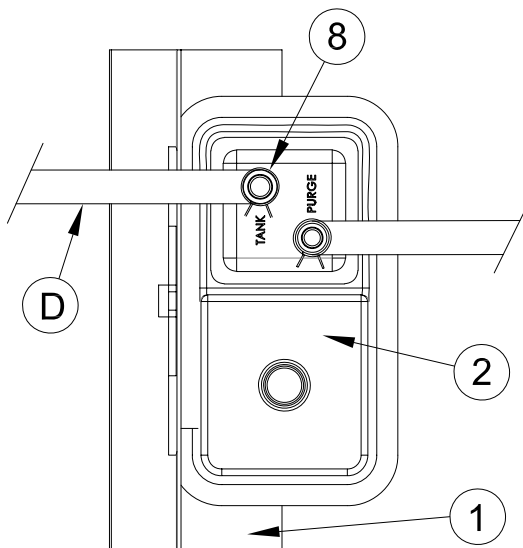
STEP 8

- Locate the hose (ref. C) on the left side of the engine that has a plastic ball inserted in the end of it. Use a small screw driver to remove the ball.
- Slide green hose clamp (ref. 10) over hose (ref. C) using a pliers.
- Route hose assembly (built in step 7) from the carbon canister (ref. 2) to this hose and insert the connector (ref. B) into hose (ref. C).
- Slide green hose clamp down to the end of the hose clamping it to the connector (ref. B).



STEP 9

- Attach customer supplied 5/16" fuel hose to hose fitting elbow (ref. 11) on top of the fuel tank. See step 4 for illustration.
- Route customer supplied 5/16" fuel hose (ref. D) to the carbon canister (ref. 2) and connect to the nipple marked TANK using black hose clamp (ref. 8).



Winco Inc.
Service Dept.
507-357-6831