

REF. #	PART #	DESCRIPTION	QTY.
1	15775-025	Axle Bracket	1
2	64326-020	Axle	2
3	43657-008	Wheel 10" Dia. Hard Rubber <sup>(1)</sup>	4
4	15775-006	Axle Bracket	1
5	61857-007	Handle	1
6	15775-100	Push/Pull Toggle Clamp	1
8	300066-26	Handle Support, Outside Left	1
9	300066-27	Handle Support, Outside Right	1
10	16199-143	Parts Bag	1
11*	64688-007	Spacer Axle Stub	4
12*	15775-023	Bracket for Brake Clamp	1
13	97883-001	Pin, Cotter, Hair <sup>(2)</sup>	4
15*	480-000	5/16 Split Washer	10
16*	465-000	.3125-18 x 0.875 HHB	10
17*	56842-005	Bolt GRG .25-20 x 2.00	2
18*	96286-006	Flat Washer Nylon	2
19*	62912-000	Foam Strip	2 - 3"
20*	47517-000	.25-20 Nylock	2
21*	93402-002	Hole Plug 1.25" Dia	2
22*	64657-100	.375-16 x 3.25in Spindle	1
24*	526-000	Washer .3125 ID	10
25*	1178-000	Flat Washer .760 x 1.375 x .0897	8
26*	458-000	.3125-18	10
27*	479-000	Lock .25 Split	2

NOTE: (1) Pneumatic Wheel & Tire. 43657-003 available (2) Earlier versions had 4 hubcaps, part number 64327-000

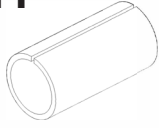
\* Items are in parts bag 16199-143

## STEP 1

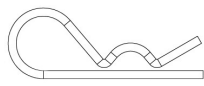
- Open hardware bag and separate components.

### FASTENERS & MISC. COMPONENTS (not shown in actual size)

11



13



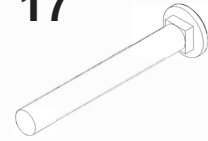
15



16



17



18



19



20



21



24



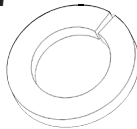
25



26



27



Hubcap 64327-000



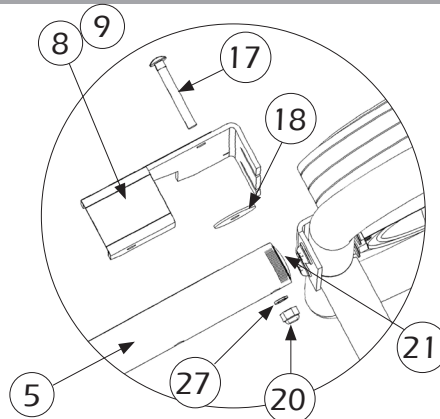
\*Earlier versions

### HARDWARE & FASTENER LIST

REF #	PART #	DESCRIPTION	QTY
11	64688-007	Spacer	4
13	97883-001	Pin, Cotter, Hair	4
15	480-000	5/16" Split Lock Washer	8
16	465-000	5/16" X 7/8" Bolt	8
17	56842-005	Bolt GRG .25-20 x 2.00	2
18	96286-006	Nylon Flat Washer	2
19	62912-000	Foam Strip	1
20	47517-000	1/4" Nylock Nut	2
21	93402-002	Hole Plug	2
24	526-000	Flat Washer	8
25	1178-000	Flat Washer	8
26	458-000	5/16" Nut	8
27	479-000	1/4" Split Lock Washer	2

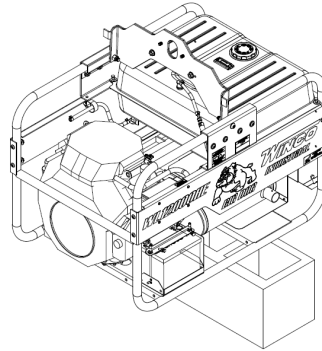
## STEP 2

- Cut the foam strip (19) in half using a scissors. Apply to the underside of the handle supports (8 & 9). Insert hole plugs (21) into the ends of the handle.
- Bolt left and right handle supports (8 & 9) to the cradle using hardware on the cradle. Attach handle (5) using hardware (17, 18, 20, 27). Do not over-tighten so that the handle will move freely.



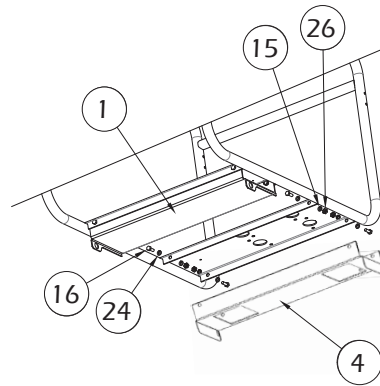
## STEP 3

- Remove the generator from the pallet and block generator up 8 to 10 inches to gain access to the bottom of the cradle assembly. A lifting jack or hoist may also be used if available.

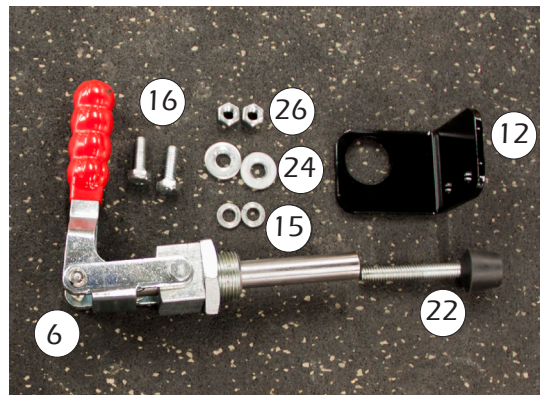


## STEP 4

- Bolt Front Axle Bracket (1) on the engine end of the cradle and Rear Axle Bracket (4) to the generator end of the cradle using hardware (16, 21, 24, 26). Make sure the axle brackets are on the inside of the cradle cross-members. The flat washers (24) go onto the bolts (16) first.



## BRAKE ASSEMBLY

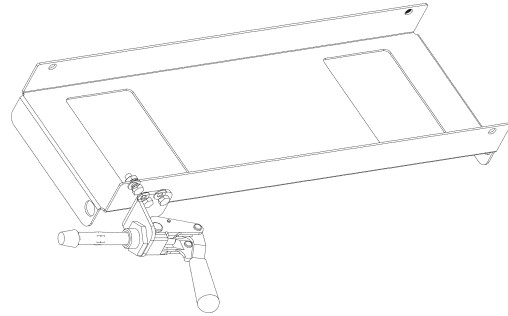


### HARDWARE LIST

REF #	PART #	DESCRIPTION	QTY
6	15775-100	Push/Pull Toggle Clamp	1
12	15775-023	Bracket for Brake Clamp	1
15	480-000	5/16" Split Lock Washer	2
16	465-000	.315-18 x .875 HHB	2
22	64657-100	Spindle	1
24	526-000	Washer	2
26	458-000	.312-18	2

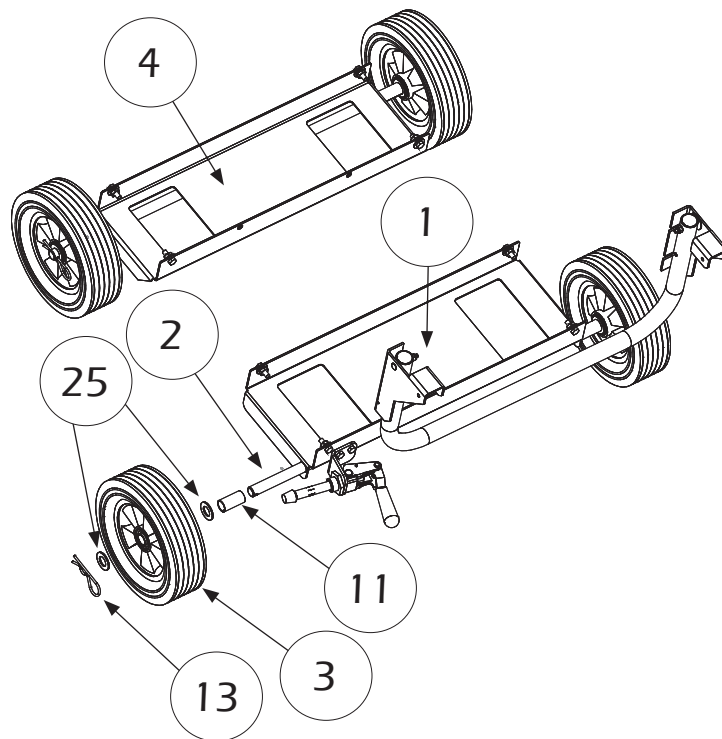
## STEP 5

- Bolt the bracket for the brake clamp to the dolly kit axle bracket using the provided hardware.
- Use nut on brake clamp to firmly secure the brake clamp to the bracket.
- Screw in the spindle all the way into the brake clamp.
- The brake is engaged when the spindle is between the spokes of the tire.



## STEP 6

- Place spacer (11), washer (25), wheel (3), washer (25) on the axle (2). Then insert cotter pins (13) on the axle. Then slide assembly through rear axle bracket (4). Place other spacer, washer, wheel, washer and cotter pin on axle. Repeat on the front axle (1).



NOTE: On earlier versions, a hubcap was placed instead of the cotter pin. Tap the hubcap on the axle, carefully, so they don't become dented.

