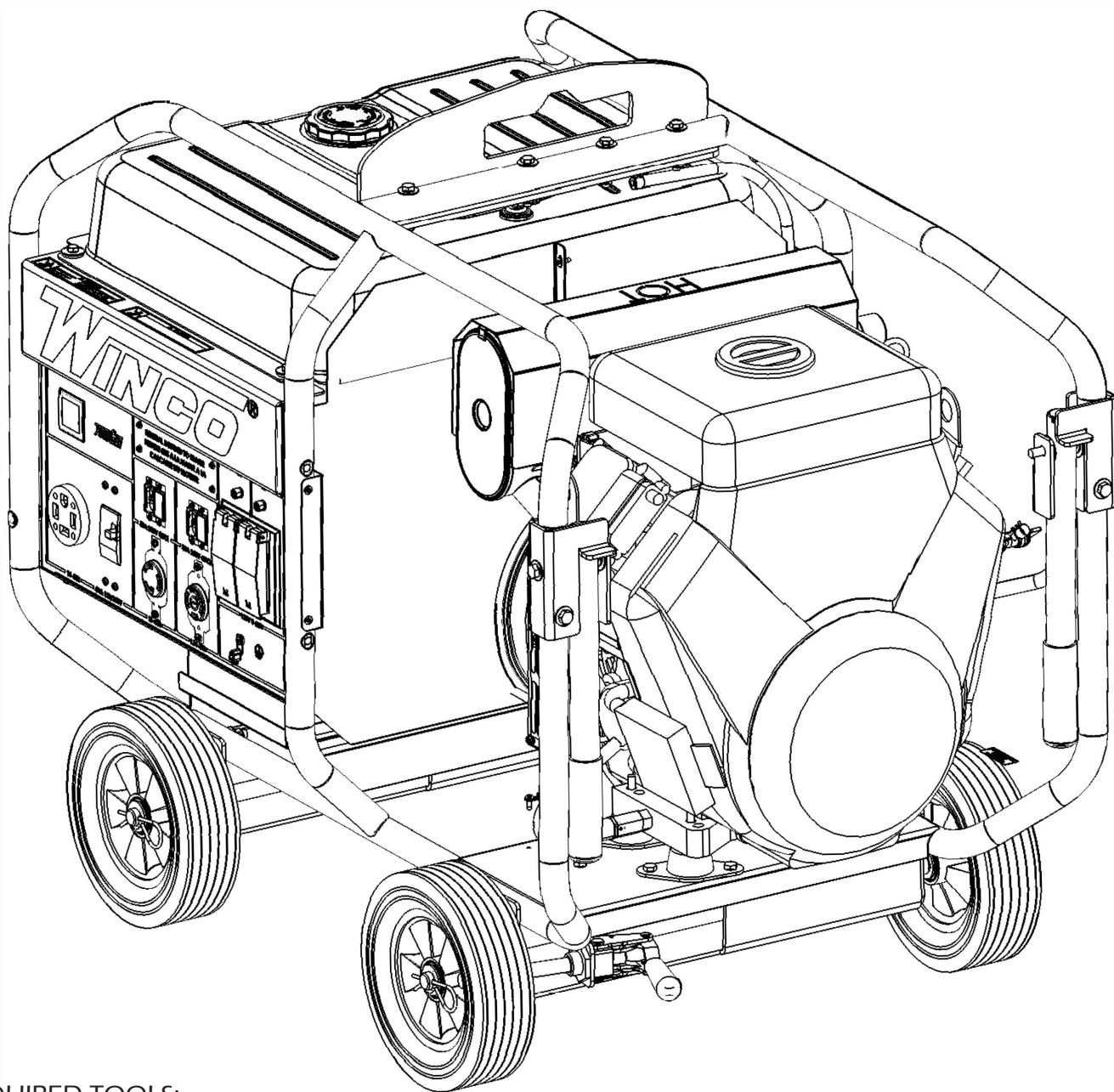


INSTALLATION INSTRUCTIONS

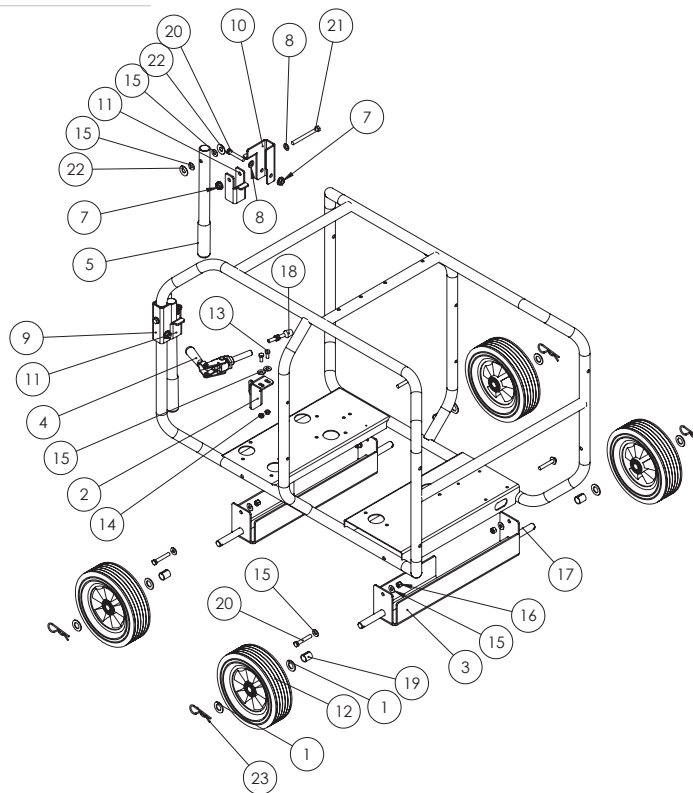


REQUIRED TOOLS:

9/16" Socket

9/16" Wrench

Crescent Wrench



COMPONENT LIST

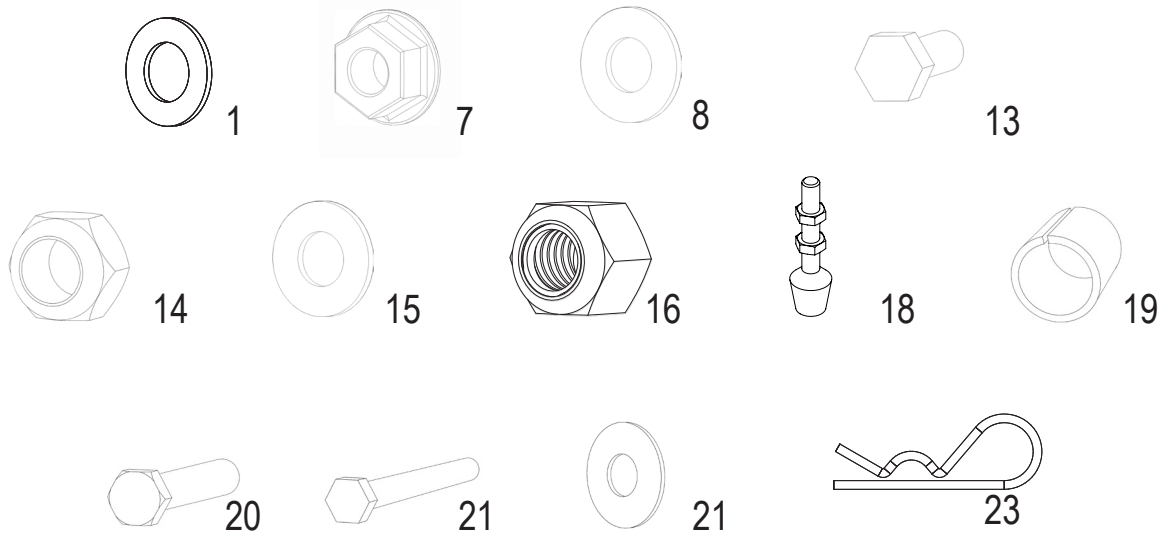
REF. #	PART #	DESCRIPTION	QTY.
1*	1178-000	Flat Washer .760 x 1.375 x .0897	8
2	15775-033	Brake Clamp Bracket	1
3	15775-034	Axel Bracket	2
4	15775-100	Push Pull Toggle Clamp	1
5	16197-006	Handle	2
7*	16250-000	.375-16 Flange Nut	4
8*	20604-000	3/8 Washer	4
9	300066-109	Left Handle Support	1
10	300066-110	Right Handle Support	1
11	300066-111	Spacer	2
12	43657-008	Wheel 10"Dia. x 3" Hard Rubber	4
13*	467-000	HHCS 5/16-18 x .75	2
14*	47136-000	Hex Nut .3125-18 Nylock	2
15*	526-000	5/16 Flat Washer	14
16*	56864-000	Elastic Stop Nut .375-16 Nylock	4
17	64326-029	.75 x 28.375 Axle	2
18*	64657-100	.375-16 x 3.25" Spindle	1
19*	64688-008	Spacer Axel Stub .75 x 1"	4
20*	91658-006	3/8-16 x 2 1/4 GR5	6
21*	91658-015	.375 x 16 x 4 HHB	2
22*	96286-008	Flat Washer Nylon 1.25 OD, 0.508 ID, 0.62 Thk	4
23*	97883-001	Pin, Cotter, Hair	4
24	91372-000	Parts Bag (not illustrated)	1

*Located in parts bag 16199-140

STEP 1

- Open hardware bag and separate components.

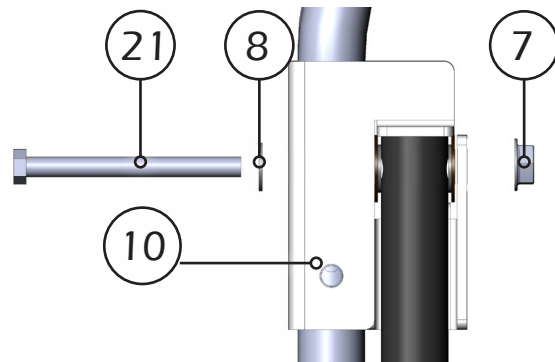
FASTENERS & MISC. COMPONENTS (not shown in actual size)



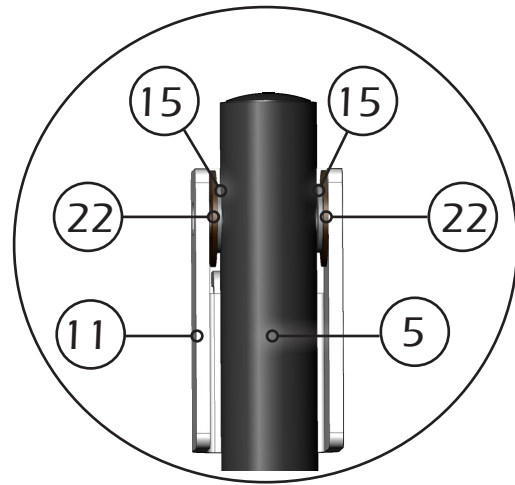
HARDWARE & FASTENER LIST			
REF. #	PART #	DESCRIPTION	QTY.
1*	1178-000	Flat Washer .760 x 1.375 x .0897	8
7*	16250-000	.375-16 Flange Nut	4
8*	20604-000	3/8 Washer	4
13*	467-000	HHCS 5/16-18 x .75	2
14*	47136-000	Hex Nut .3125-18 Nylock	2
15*	526-000	5/16 Flat Washer	14
16*	56864-000	Elastic Stop Nut .375-16 Nylock	4
18*	64657-100	.375-16 x 3.25" Spindle	1
19*	64688-008	Spacer Axel Stub .75 x 1"	4
20*	91658-006	3/8-16 x 2 1/4 GR5	6
21*	91658-015	.375 x 16 x 4 HHB	2
22*	96286-008	Flat Washer Nylon 1.25 OD, 0.508 ID, 0.62 Thk	4
23*	97883-001	Pin, Cotter, Hair	4

STEP 2

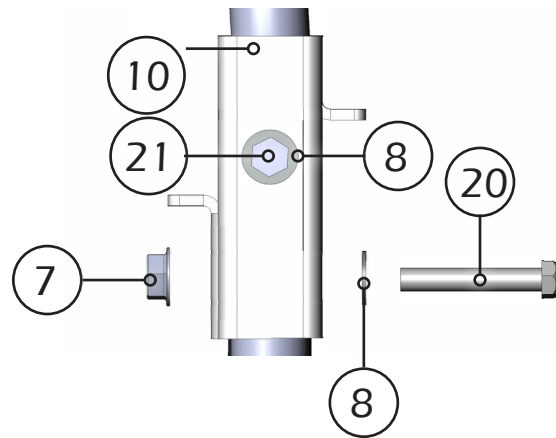
- Gather all the components needed for the handle install. Use handles (5), flange nut (7), left handle support (9), right handle support (10), spacer (11), fat washer (15), bolt (20), bolt .375 x 16 HHB (21), and flat washer (22).



- Looking at the engine side, let's work on the left side first. Pre-align the right handle support (10), inside the spacer (11) between 2 - 1.25 flat washer (22), 2 - 5/16 flat washer (15). (See circled illustration)



- Line up the handle support (10) to the top hole on the cradle. Using the top illustration, you want to get the bolt .375 x 16 HHB (20) through the pre-aligned right handle support and secure with flange bolt (7).



- Insert HHCS .375-16 x 2.25 (19) through a 5/16 Flat Washer (14), through the handle support (9), and secure with a .375-16 Flange Nut (7).

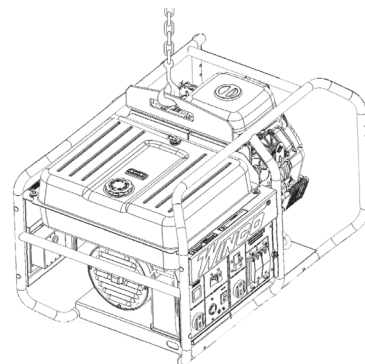
- Use the prior steps for the left handle support (9), on the right side (looking at the engine).

- When completed, your handles should look like the illustration to the right.



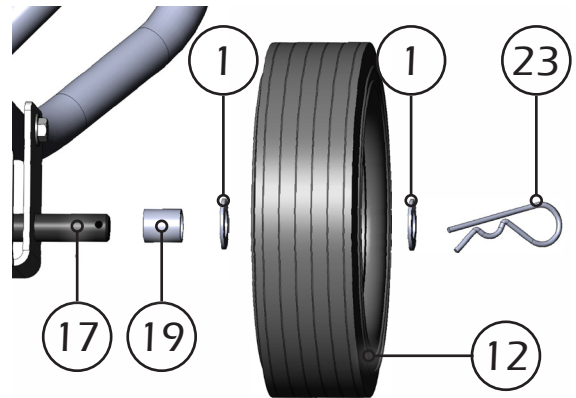
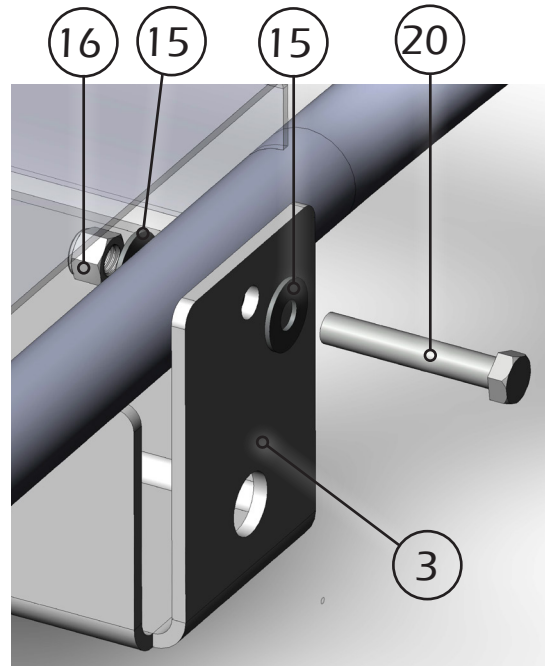
STEP 3

- Install the lifting eye. Installation instructions are found in the generator manual.
- A hoist would be the preferred method of lifting the generator up. If a hoist is not available, a lifting jack or use cinder blocks to raise the generator up 8 to 10 inches off the ground to gain access to the bottom of the cradle assembly.



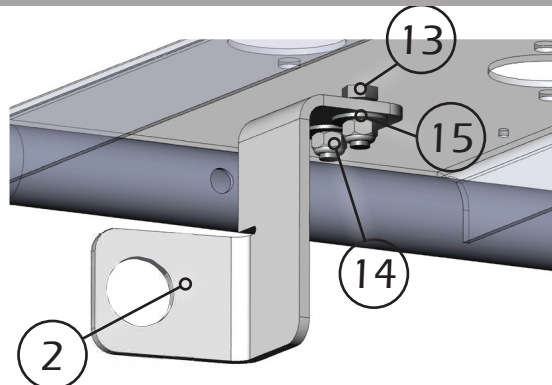
STEP 4

- Now our efforts will go to the wheels. One axle bracket (3) will be installed under the generator cross member, and the other will go under the engine cross member. Work on the gen end side first.
- Each bracket will use one HHCS .375-16 x 2.25 (20), two 5/16 flat washers (15), and one nylock nut .375-16 (16).
- Ensure the bracket opening is on the left, facing you, when looking at the gen end. Line the bracket with the cradle and insert the screw (20) through washer (15), then the cradle, use another washer (15) and secure it with the nylock nut (16).
- Thread an axle (17) through the axle bracket so it sticks out on both ends. On each end of the axle, install a spacer (19) first, then a Flat Washer .760 x 1.375 x .0897 (1), a wheel (12), another flat washer (1), and secure with the cotter pin (23) through the holes on the end of the axle. Repeat for the other wheel.
- Now move onto the engine side. Ensure the bracket opening is on the left, facing you, when looking at the engine. Install the axle bracket.

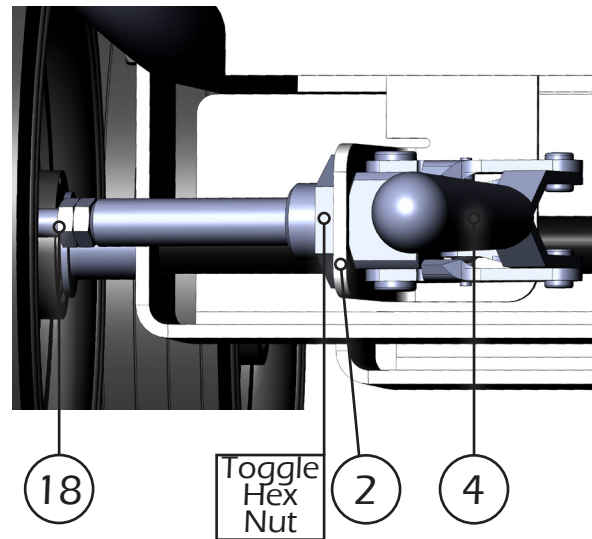


STEP 5

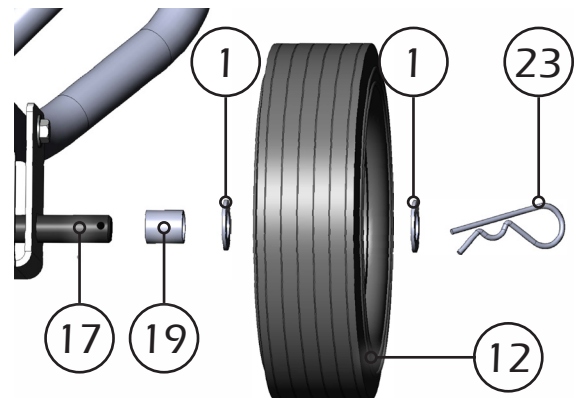
- Before installing the wheels (on the engine side), install the brake clamp bracket (2) onto the engine cross member. Inset two of the HHCS 5/16-18 x .75 (13) from the top of the engine cross member. On each screw, place a 5/16 Flat Washer (15) first, and then secure with a Hex Nut .3125-18 Nylock (14).



- Next you will finish by installing the brake. Install the spindle (18) into the push pull toggle (4). Remove the large hex nut from the toggle. Install the toggle through the bracket (2) and the large hex nut. Secure the toggle to the bracket.



- Install the wheels. Thread an axle (17) through the axle bracket so it sticks out on both ends. On each end of the axle, install a spacer (19) first, then a Flat Washer .760 x 1.375 x .0897 (1), a wheel (12), another flat washer (1), and secure with the cotter pin (23) through the holes on the end of the axle. Repeat for the other wheel.



Give yourself a pat on the back.
Cut out this certificate and proudly showcase that you are amazing!

Winco Inc. Service Dept.
507-357-6831

