

## Features

### **PSI 8.8L Engine**

The 8 cylinder, overhead valve engine meets EPA/CARB standby emission regulations.

### **Stamford Generator End**

Industrial grade generator ends.

### **Adjustable Circuit Breaker**

Adjustable trip point make field reconnects simple.

### **Battery Charger**

Factory installed 3 stage, 2 Amp battery charger.

### **Block Heater**

In-line Kim Hotstart, 120V, block heater with thermostat.

### **DSE 8610 MKII**

Our digital controller is powerful and dynamic with a user-friendly interface and allows up thirty-two PSS150s operating in parallel.

### **Galvanealed Steel Weather Enclosure**

Our weather enclosures provide sound reduction while our powder coat paint provides a durable, long lasting finish.

### **100% Load Tested**

You won't find statistical sampling here. We load test every generator before it leaves our facility.



## ***PACKAGED STANDBY SYSTEMS***

**500,000 Running Watts-LP**

**600,000 Running Watts-NG**

## Optional Accessories

### **Generator Strip Heater**

Reduces condensation.

### **ASCO Automatic Transfer Switch**

Safely restore power to critical circuits.

### **Vapor Fuel Strainer**

Keep the fuel line free from debris that could cause damage to your generator.

### **Battery Charger Upgrade**

Upgrade from the standard 2 Amp charger to a 5 Amp or 10 Amp with fail contact or 10 Amp NFPA compliant.

### **DSE8660**

Allows advanced paralleling and load control options. Installed as a separate control module outside of the generator sets.

### **Battery Heater**

Keeps battery warm for maximum power output at start-up.

### **NFPA 110 Level 1**

Factory installed, includes remote annunciator, DSE 10 Amp battery charger, and low coolant alarm. This system will have the capability to start and accept load in 45 seconds.

### **WebNet**

Control your generator from your smartphone or computer.

### **LP Liquid Withdrawal**

Pulls liquid LP from tank and vaporizes on eng/gen set; allowing you to install smaller fuel lines and smaller fuel tanks.

MODEL NUMBER	OUTPUT	LP GAS			NATURAL GAS		
	VOLTS	WATTS	KVA	AMPS	WATTS	KVA	AMPS
836PSS600-4	120/208 3-PH	500,000	625	1,736	600,000	750	2,083
PSS600-17	120/240 3-PH	500,000	625	1,501	600,000	750	1,801
PSS600-18	277/480 3-PH	500,000	625	751	600,000	750	902

Derating factors: **Temperature** - 3% for every 10°F above 77°F air inlet **Elevation** - 3% per 1,000 feet elevation above sea level.

## GENERATOR

3 PHASE <sup>(1)</sup>	12 LEAD
VOLTAGE REGULATION	+/- 1%
VOLTAGE CONTROL	AS440
TOTAL HARMONIC DISTORTION	< 5%
TEMPERATURE RISE	125°/40° C
TYPE	4 POLE ROTATING FIELD
BRUSHLESS	YES
GENERATOR SPEED	1800 RPM
ROTOR	2/3 PITCH
WINDINGS	100% COPPER
STATOR WINDING	DOUBLE LAYER CONCENTRIC
EFFICIENCY PEAK	92.5%
COUPLING	FLEXIBLE DISC
BEARINGS	(1) MAINTENANCE FREE
TELEPHONE INTERFERENCE	< 2%
INSULATION	CLASS H
GENERATOR WARRANTY <sup>(2)</sup>	2 YR/2000 HRS

NOTES: (1) 3-PH power factor 0.8 (2) For generator warranty information contact your local WINCO service center.

## ENGINE

BRAND	PSI
MODEL	8.8 INDUSTRIAL
SPEED	1800 RPM
DISPLACEMENT	8.8L
CYLINDERS	8
LUBRICATION	FORCED W/ SPIN-ON FILTER
COOLING	LIQUID
BORE X STROKE	4.35 X 4.50
IGNITION	ELECTRIC
GOVERNOR	ELECTRONIC
EXHAUST	CRITICAL GRADE
EXHAUST OUTLET SIZE	5" AT MUFFLER
RECOMMENDED OIL	SAE 10W-30
OIL CAPACITY	2.25 GALLONS
LOW OIL PROTECTION	STANDARD
HIGH COOLANT TEMP PROTECTION	STANDARD
ENGINE WARRANTY <sup>(1)</sup>	3 YRS/3500 HRS

NOTES: (1) Contact your local PSI service center for engine warranty information.

## GENSET

CIRCUIT BREAKER <sup>(1)</sup>	ADJUSTABLE
MOTOR STARTING (CODE G) <sup>(2)</sup>	
NG	150 HP
LP	200 HP
CARB/EPA APPROVED	YES
CSA APPROVED	YES
UL2200 LISTED	YES
TOGGLE FUEL SELECTOR	STANDARD
WINCO WARRANTY <sup>(3)</sup>	2 YRS/2000 HRS

NOTES: (1) When voltage connection is changed, the Instant Trip switch must be changed. See generator manual for complete details. (2) Code G capacitor motor. (3) For generator warranty information contact your local WINCO service center.

## FUEL - PER UNIT

FUEL CONSUMPTION	
LP @ 100% LOAD	713 FT³/HR - 1,832,410 BTU/HR
NG @ 100% LOAD	1965 FT³/HR - 2,004,300 BTU/HR
INLET PRESSURE	4-6 OZ / 7"-11" WATER COLUMN
FUEL INLET SIZE	1.25"

## FUEL - WHOLE SYSTEM

FUEL CONSUMPTION	
LP @ 100% LOAD	2852 FT³/HR - 7,329,640 BTU/HR
NG @ 100% LOAD	7860 FT³/HR - 8,017,200 BTU/HR

## BATTERY - PER UNIT<sup>(1)</sup>

DC SYSTEM VOLTAGE	12V
DC ALTERNATOR	ENGINE MOUNTED
BATTER RACK/ CABLE	INCLUDED
BATTERY CHARGER	2A STAGE 3 INCLUDED
REQUIRED BATTERY	BCI 31 900 CCA

NOTES: (1) Battery not included

## DSE 8610 MKII CONTROL FEATURES

ENGINE DISPLAY/PROTECTION	
ENGINE RPM	YES
LOW OIL PRESSURE	YES
HIGH COOLANT TEMPERATURE	YES
LOW COOLANT LEVEL	OPTIONAL
OVERSPEED	YES
UNDERSPEED	YES
OVERCRANK	YES
CAN ECU SHUTDOWN	YES
GENSET DISPLAY/PROTECTION	
SYNCHRONIZATION CONTACTOR	YES
VOLTAGE (L-N)	YES
VOLTAGE (L-L)	YES
OVER VOLTAGE	YES
UNDER VOLTAGE	YES
OVER FREQUENCY	YES
UNDER FREQUENCY	YES
LOADING FREQUENCY	YES
OVER CURRENT	YES
SHORT CIRCUIT	YES
KW, KVA, KVARH DISPLAY	YES
KWH, KVAH, KVARH DISPLAY	YES
EARTH FAULT	OPTIONAL
OVERLOAD PROTECTION	YES

## DBA @ 7 METERS

NO LOAD	77.6
FULL LOAD	80.8

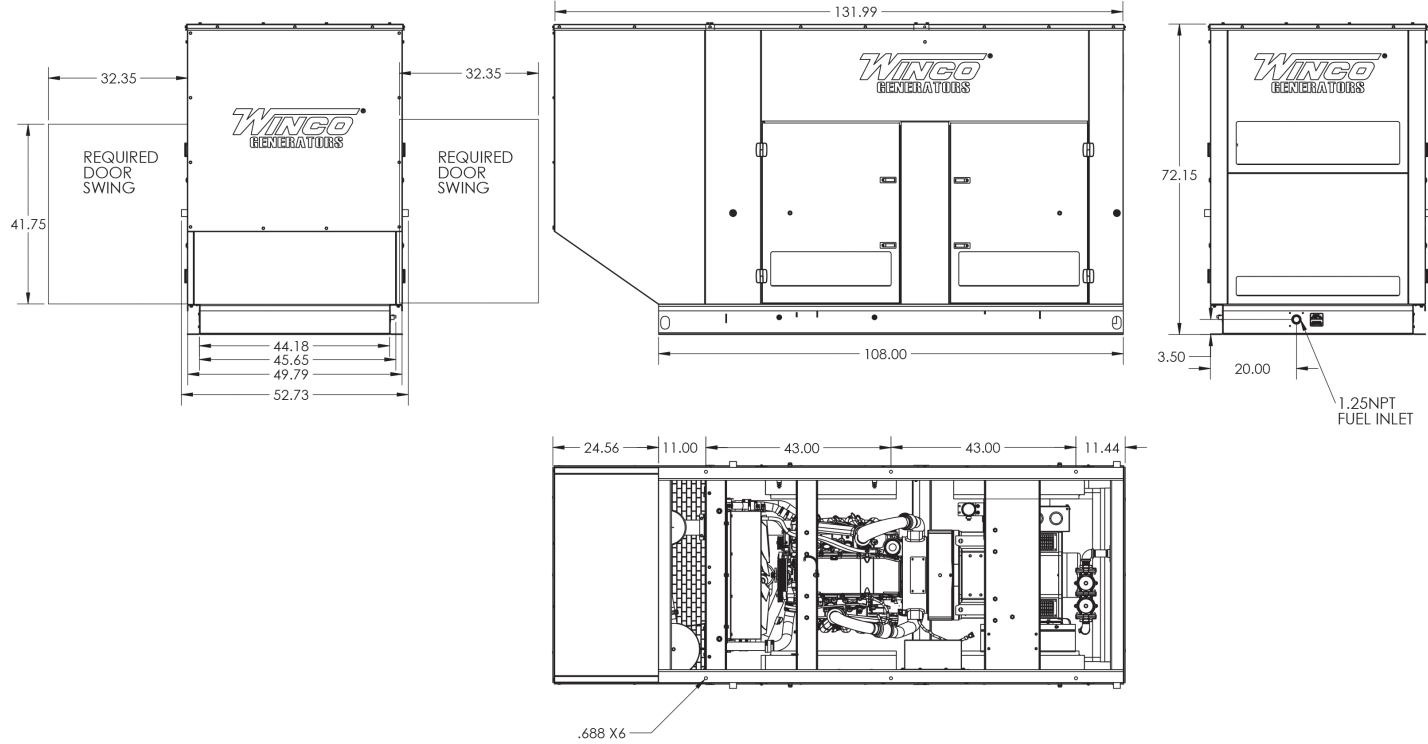
## SHIPPING - PER UNIT

DIMENSIONS - ENCLOSED (LxWxH)	132" x 52.75" x 72.2"
DIMENSIONS - OPEN SKID (LxWxH)	117" x 52.75" x 72.1"
NET WEIGHT	4,700 LBS
SHIP WEIGHT	4,720 LBS
FREIGHT CLASS	70

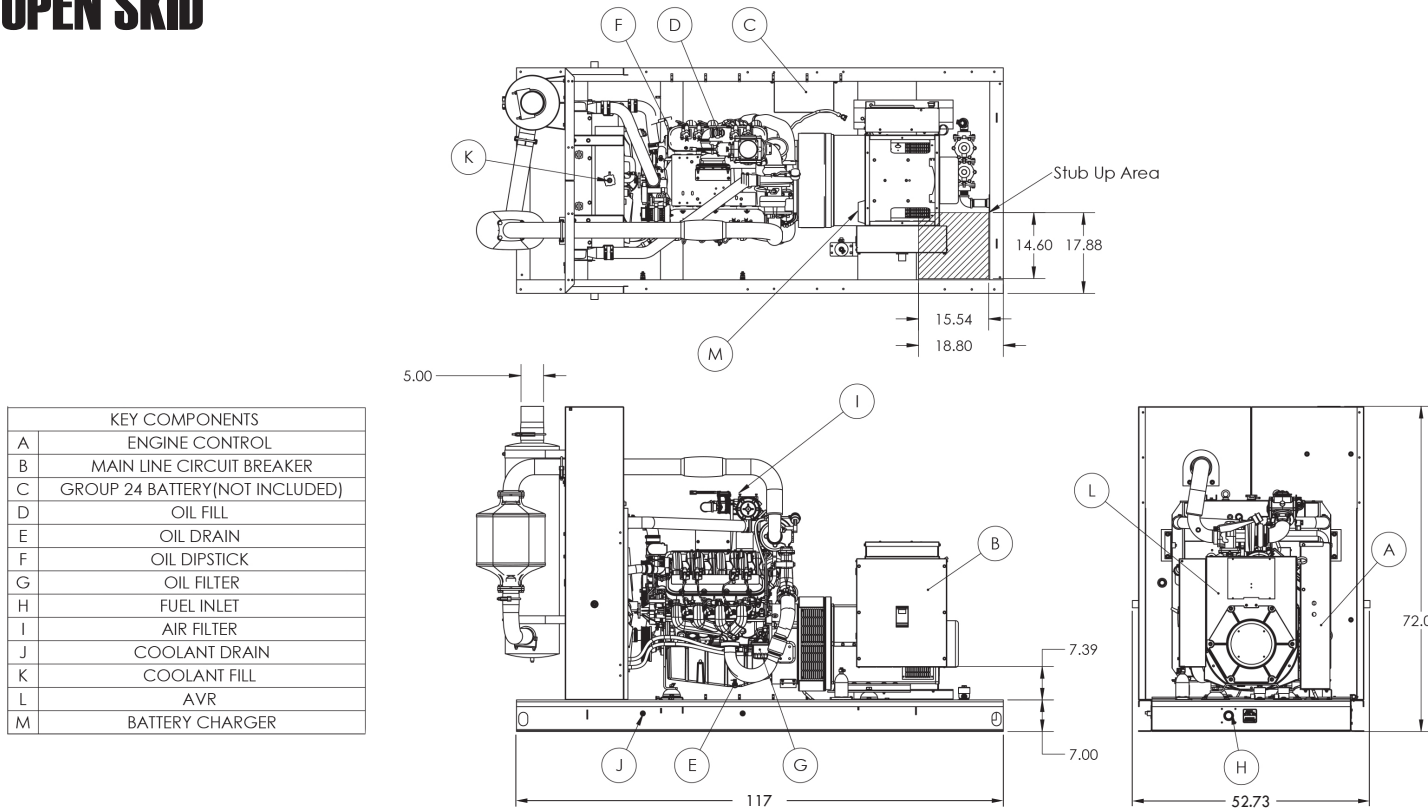
ADDITIONAL DISPLAYS/PROTECTIONS	
EMERGENCY STOP	YES
BATTERY VOLTAGE	YES
BATTERY OVER/UNDER VOLTAGE	YES
BATTERY CHARGER FAILURE	OPTIONAL
MAINS DECOUPLING	YES
FAIL TO SYNC ALARM	YES
R.O.C.O.F. ALARM	YES
VECTOR SHIFT ALARM	YES
VOLTAGE ALARM	YES
FREQUENCY ALARM	YES
COMMUNICATIONS	
USB CONNECTABLE	YES
RS232/RS485	YES
NFPA ANNUNCIATOR OPTIONAL	DSE 2548
REMOTE DISPLAY PANEL	OPTIONAL
ETHERNET/MODEM	OPTIONAL
MSC LINK	YES
ADDITIONAL FEATURES	
AUDIBLE ALARM	YES
ENGINE EXERCISER	USER ENABLED
MAINTENANCE INTERVAL TIMER	USER ENABLED
CONFIGURABLE INPUTS OPTIONAL	12-32 W/4 DSE 2130
CONFIGURABLE OUTPUTS OPTIONAL	8-80 W/DSE 2157
EVENT LOG	250
ALTERNATIVE CONFIGURATIONS	3
UL/CSA LISTED	YES
SYNCHRONIZE SET CAPABILITY	32
DEAD BUS SENSING	YES
HEATED DISPLAY	YES

Contact your local WINCO dealer for more DSE8610 MKII information.

ENCLOSED



OPEN SKID



Specifications are subject to change without notice.