

Wiring Diagram C56310
 Schematic N/A
 Generator Parts
 Unassembled C56311
 Complete Unit
 Part # C56309

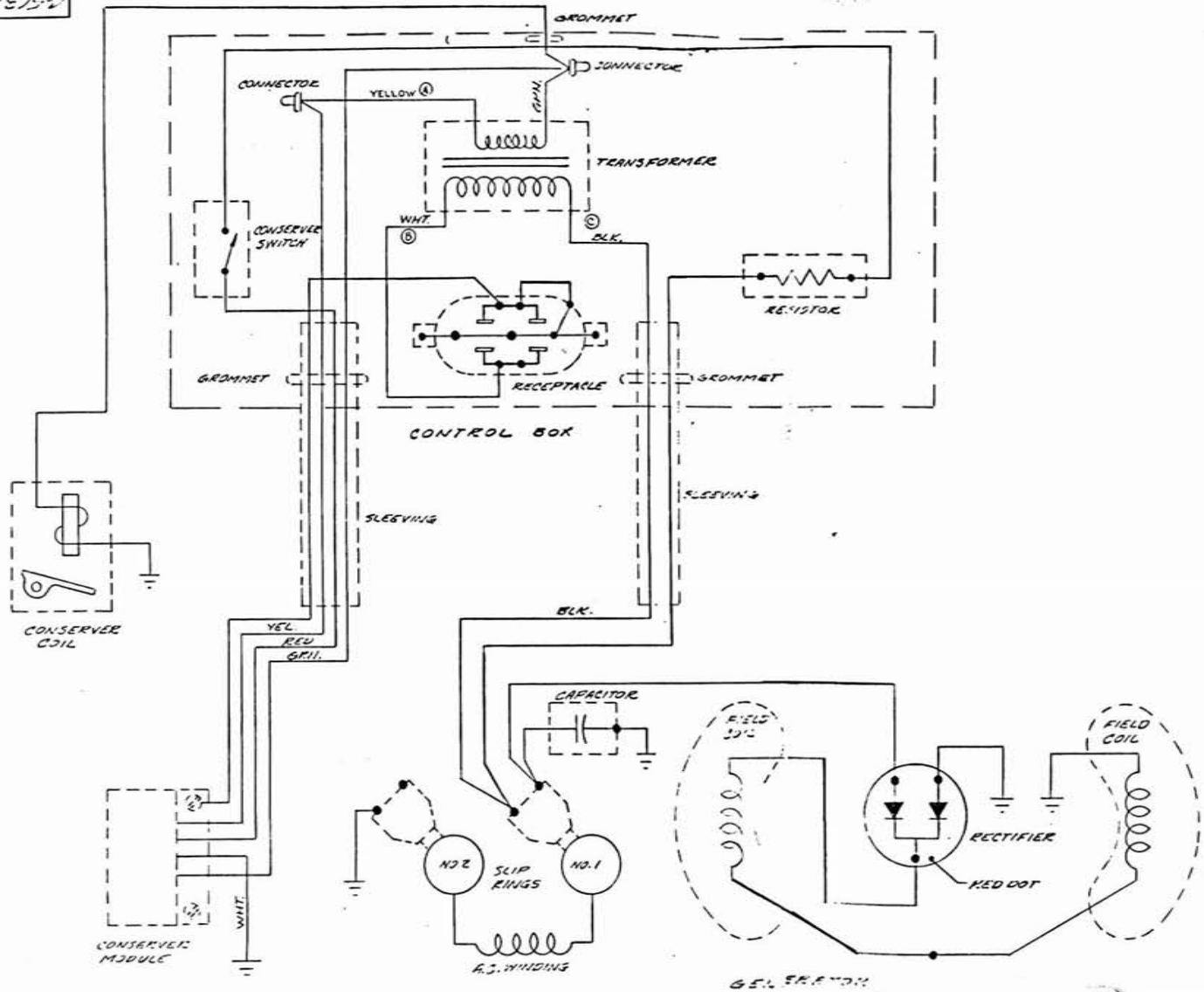
 REPAIR
 PARTS LIST
 #484

Size 2500 Watts
 Drive Direct
 Type Two Pole
 Unit Model # C205BH-1M/B

DESCRIPTION	PART #	QTY.	DESCRIPTION	PART #	QTY
Armature	55273-1	1	Control Box Assy.	56319	1
Armature Bearing	55223	1	Cover Assy.	56335	1
Armature Thru Bolt	23197-3	1	Front Panel (Bare)	51674-1	1
			Rear Panel (Bare)	49527	1
Fan Assy.	54967	1	Receptacle (115)	24749	1
Fan Washer	23558	1			
Fan Lockwasher	55224	1	Conserver Assy.		
Fan Nut	23605	1	(Complete)	56320	1
			Module	56314	1
Field Coil	53615A	1	Transformer	40450	1
Field Coil	53615-1A	1	Electro Magnet	44889	1
			Formed Bracket	49444	1
Shell & Bracket Assy.	53614	1	Lever (Throttle)	49443	1
Pole Shoe	53612	1	Resistor	52641	1
Pole Shoe Retainer	53613	1	Switch	24238	1
Engine Adaptor Brkt.	43887	1	Band	49503	1
Adaptor Brkt. Screw	55576	4			
End Cover Assy.	56312	1			
Brush Rack Assy.		1			
(Complete)	55092	1			
A. C. Brush	23607	4			
A. C. Brush Holder	23500	4			
Brush Holder Plate	55091	1			
A. C. Condenser	54977	1			
Rectifier (Excitation)	54976	1			
Cradle	54770	1			
Shock Mounts	20191	3			

ENGINE MAKE Briggs & Stratton MODEL # 130232 PART # 53655

15752



GENERATOR

DRAWN BY		DATE	CHK'D BY	DATE	APP'D BY	DATE	SCALE
JON		3-21-78	JRM	3-23-78	JRM	3-23-78	—
MATERIAL							
(A) WAS RED (R) WAS WHITE/YELLOW 16 80 MIL 7/81 (B) WAS RED/BLACK, TRANSFORMER REVISED DC 3/1/74							
FINISH	—						
APP	P-56310						
WORK	WIRING DIAGRAM						
DYNA TECHNOLOGY, INC.							P-56310
SIoux CITY IOWA							1/16" = 1"

1/16" = 1"