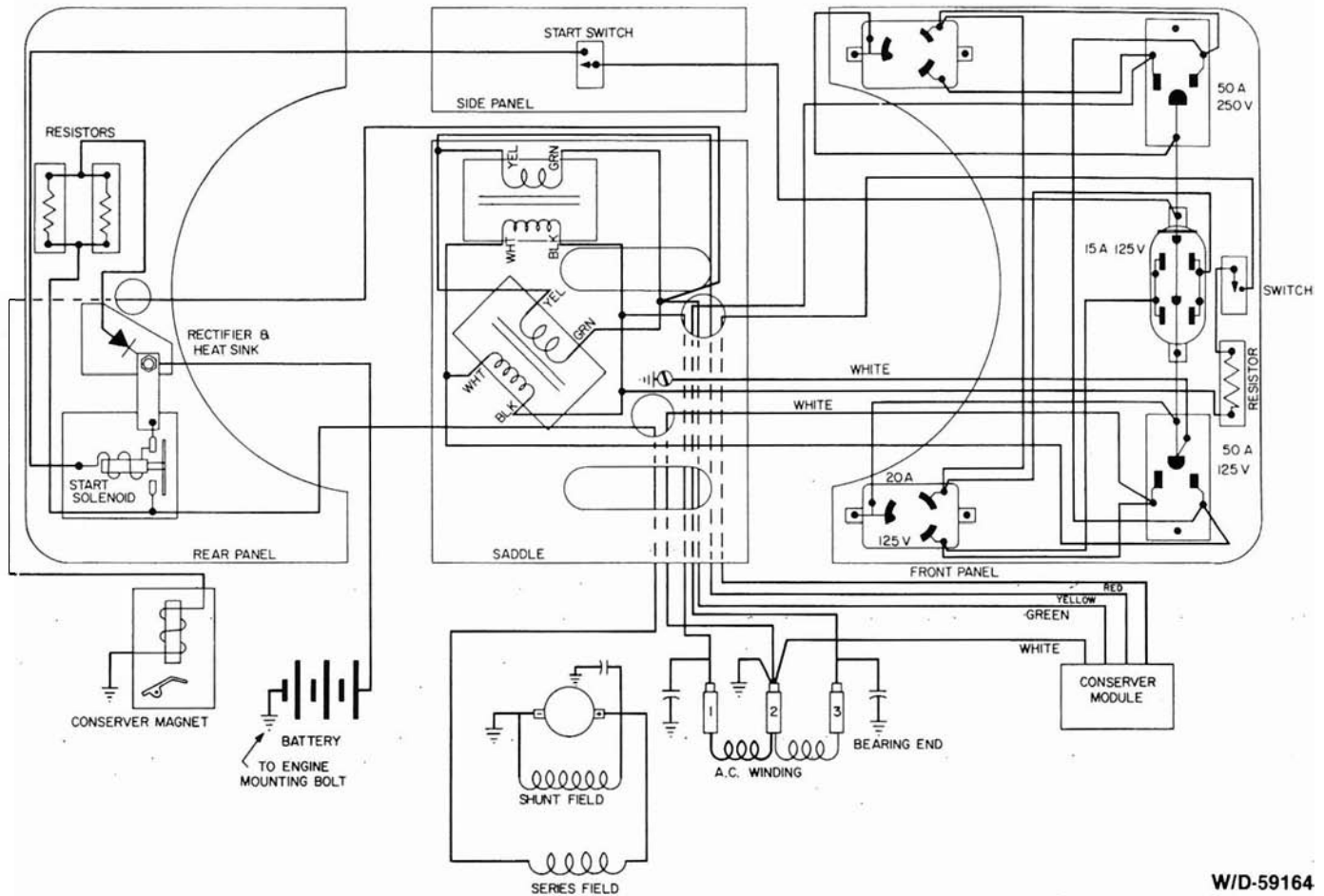


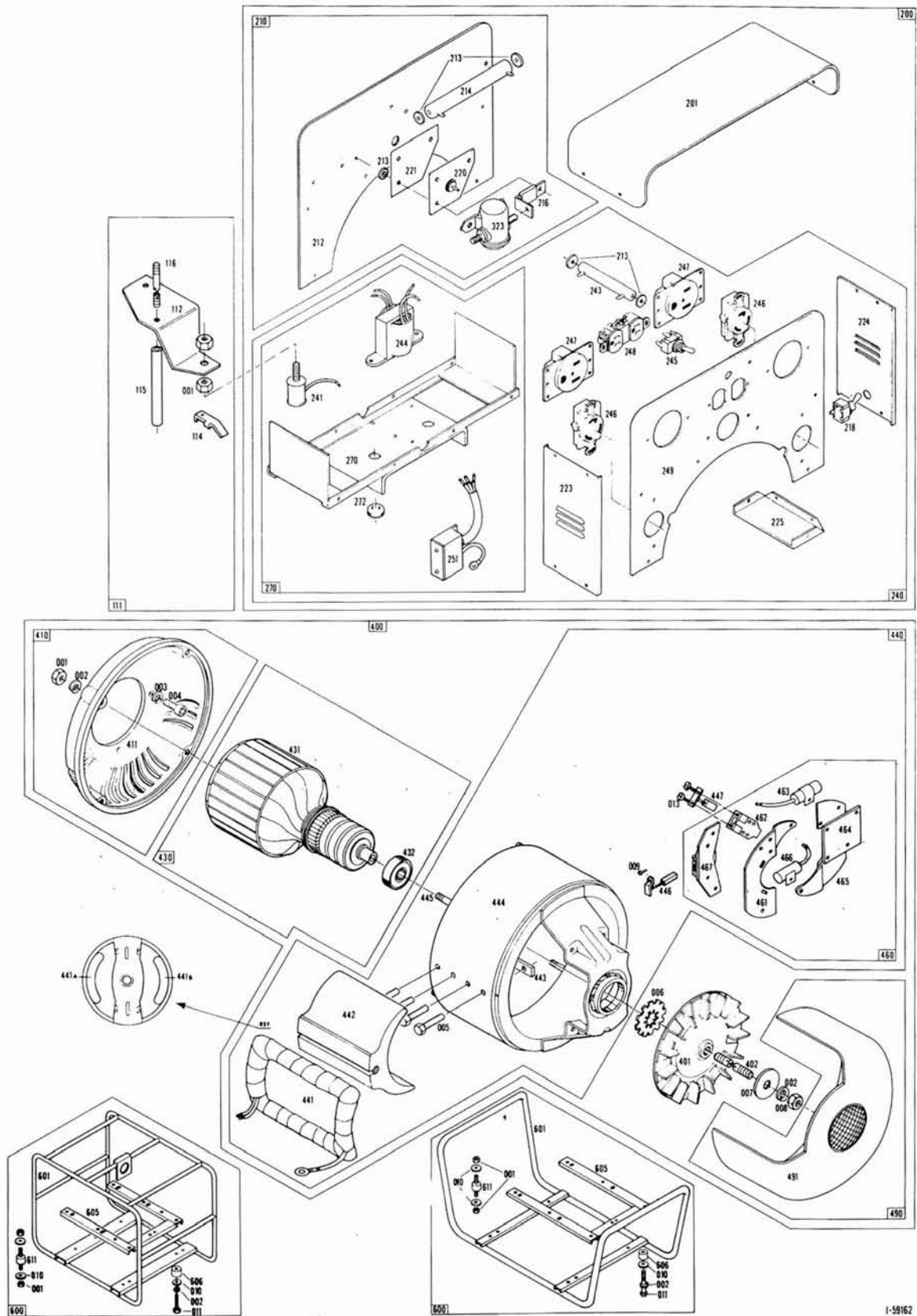
ILLUSTRATED PARTS LIST



W/D-59164

SCHEMATIC DIAGRAM

This IPL contains wiring, illustration, parts list, ordering information and technical data to perform routine maintenance on this generator. Consult factory with model no., serial no. and test data for further assistance.



MODEL 705BH-FE/A

REF.	PART NO.	QTY.	DESCRIPTION	REF.	PART NO.	QTY.	DESCRIPTION
001	458	14	Hex Nut— $\frac{5}{16}$ -18	248	24749	1	Receptacle—125V/15A NEMA 5-15R
002	480	17	Lockwasher— $\frac{5}{16}$ Split				
004	23604	4	Cap Screw— $\frac{7}{16}$ -14 Socket Head	249	59168	1	Front Panel—Less Receptacles
005	43781	8	Cap Screw— $\frac{7}{16}$ -20 X	251	48574	1	Electronic Module—Conserver
006	40552	1	Lockwasher Int. Tooth	270	57008	1	Saddle
007	23558	1	Flat Washer	272	56927	1	Grommet
008	23605	1	Hex Nut— $\frac{5}{16}$ -24	323	24061	1	Solenoid—12 VDC Start
009	4637	4	Machine Screw—#10-32 x $\frac{3}{8}$	401	23404	1	Fan Assembly
010	40746	20	Machine Screw—#8-32	402	23197-16	1	Thru Bolt
011	1741	1	Cap Screw— $\frac{1}{2}$ -13 X	411	55493	1	End Bracket
100	58665	1	Drive Engine B&S 326432-0723-01	430	57688	1	Armature & Brg Assembly
112	57563	1	Formed Conserver Bracket	431	57688-1	1	Armature Less Brg
114	44892	1	Steel Extension	432	50215	1	Bearing
115	58883	1	Pipe Spacer	440	58886	1	Field Shell & Coil Assembly
116	58884	1	Stud	441A	54601	1	Field Coil
				441B	54601-1	1	Field Coil
200	59163	1	Control Panel Assembly				
201	51580	1	Cover	442	43473	2	Pole Shoe
212	57009	1	Rear Panel (Bare)	443	43474	2	Pole Shoe Retainer
213	1376	1	Shoulder Washer	444	57679	1	Field Shell
214	54599	1	Resistor—Batt. Charge	445	51434	4	Stud— $\frac{5}{16}$ -18 X
216	52789-1	1	Copper Strap	446	47683	2	Brush D.C.
				447	24981	10	Brush A.C.
218	52029	1	Start Switch				
220	54776	1	Diode and Heat Sink Assembly	461	40994	1	Riveted Brush Rack—LH
221	54798	1	Insulation	462	23500-2	10	Brush Holder A.C.
223	51685	1	Side Panel	463	41221	2	Capacitor A.C.
224	51589-1	1	Side Panel	464	50237	1	Bracket—Module Mtg.
225	51577	2	Bottom Box Support	465	40994	1	Riveted Brush Rack—RH
				466	41180	1	Capacitor D.C.
241	44889	1	Electromagnet—Conserver				
243	48583	1	Resistor—Conserver	467	54836	2	Riveted D.C. Brush Holder
244	54196	1	Transformer—Conserver Sensing	491	55007	1	End Cover
245	24238	1	Switch—Conserver	601	59710	1	Cradle—Wrap Around
246A	56279	1	Receptacle—125V/20A NEMA L5-20R	601A	51817-1	Alt	Cradle—Open Loop Style
				605	57677	1	Sub Frame
246B	56281	1	Receptacle—250V/20A NEMA L6-20R	606	20561	1	Spacer
				610	23760	8	Flat Washer
247A	54545	1	Receptacle—125V/50A NEMA 5-50R	611	23623	4	Shock Mount
247B	57325	1	Receptacle—250V/50A NEMA 6-50R				

PARTS ORDERING INFORMATION REQUIRED

To fill your order for service parts, please advise the complete Generator model number and serial number, part number(s), and part description. If in doubt, consult the factory prior to placing the order. Send all parts orders to WINCO, Division of Dyna Technology, Inc., 225 South Cordova Ave., Le Center, MN 56057.



TECHNICAL DATA

GENERATOR SPECIFICATIONS:

Watts—7500; Volts—115/230; Amps—65.2/32.6; Phase—1; Hz—60; RPM—3600

Normal Voltage:

115 VAC
230 VAC

No Load:

132 VAC
264 VAC

Full Load:

112 VAC
224 VAC

Resistance:

SS#1368

Field Coils—7.32 ± .32 ohms

Armature—Less than one ohm ring to ring
Less than one ohm bar to bar

Excitation Voltage: (Approximately)

63 Volts DC

Separately Excited:

12 VDC to Positive Field Lead. 160 to 200 VAC output line to line. NOTE: Remove positive DC brush. Unit will have to be started manually.

BASIC TEST PROCEDURE:

Refer to illustration for component location by Reference Number.

Example: No output—Check field coils for opens and shorts, Reference Numbers 441A and 441B.

No Output:

- Check for loose or open connections.
- Check field coils for opens or shorts, Reference Numbers 441A and 441B.
- Check brushes for wear, proper seating and not stuck in holder, Reference Numbers 446 and 447.
- Check armature for opens or shorts, Reference Number 431.

Low Voltage—No Load:

- Check generator speed/frequency (3600 RPM nominal).
- Check for loose or open connections.
- Check winding resistance, Reference Numbers 441A, 441B and 431.

Low Voltage—Full Load:

- Check generator speed/frequency (3600 RPM nominal).
- Check generator load.
- Check for loose or open connections.
- Check winding resistance, Reference Numbers 441A, 441B and 431.