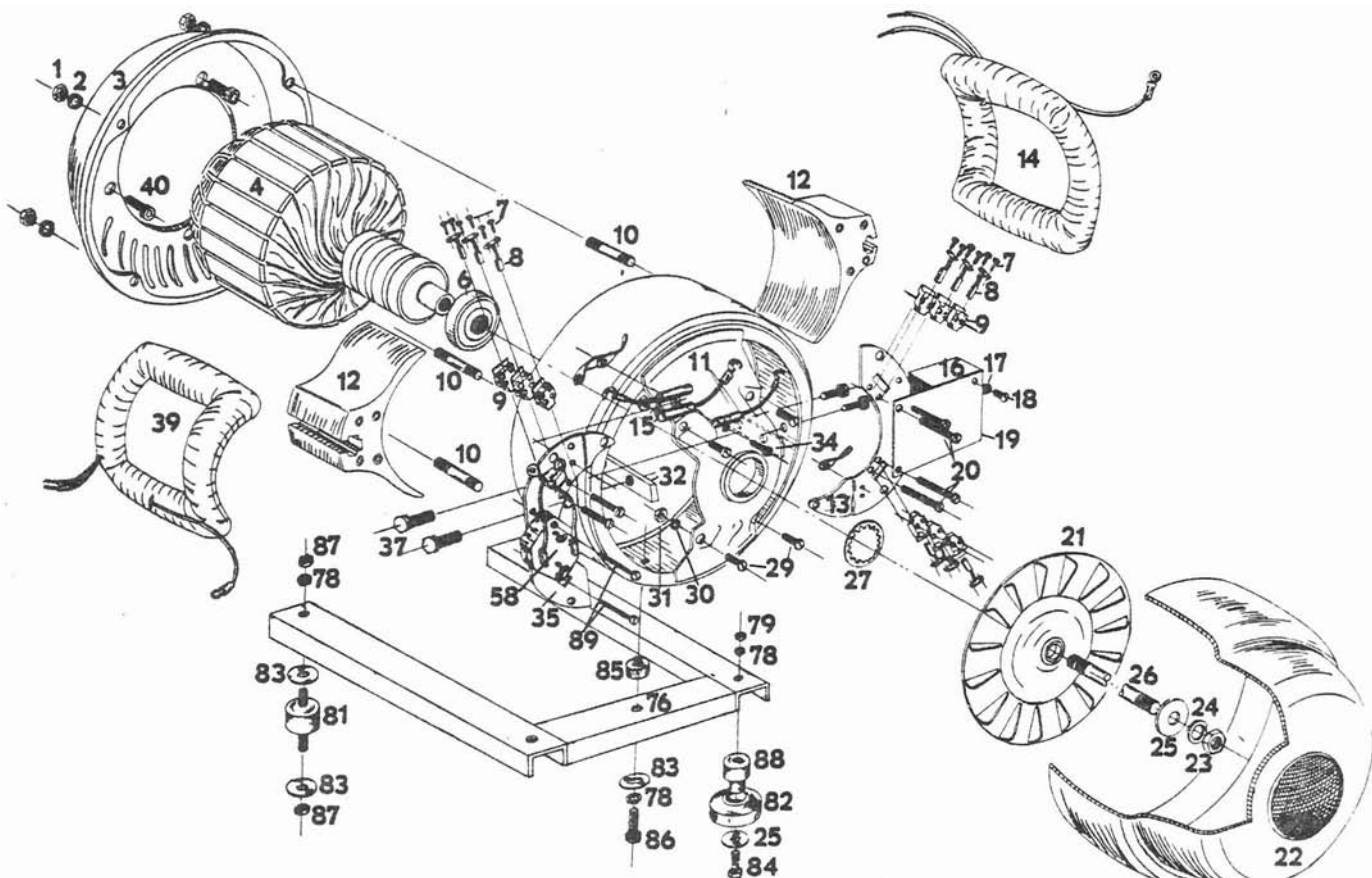
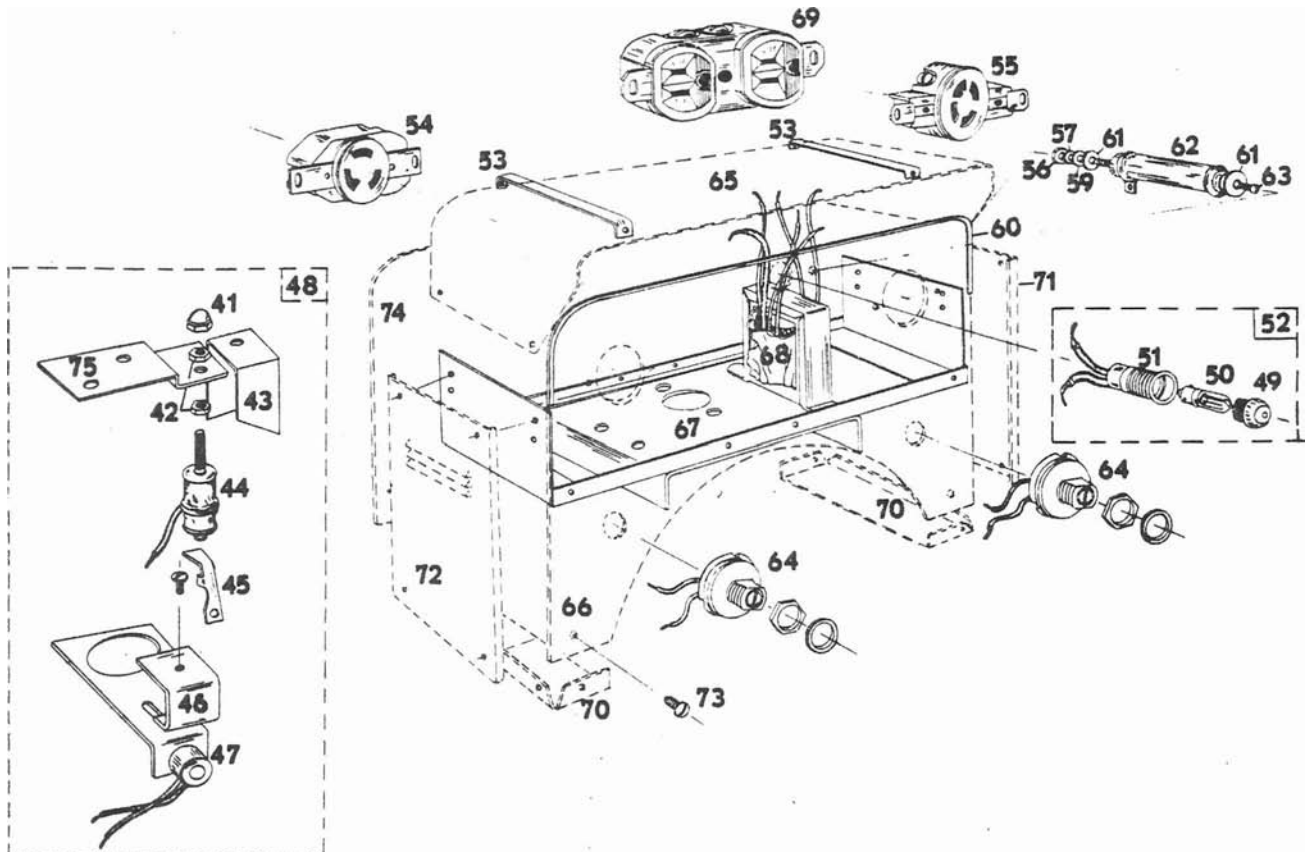


# WINCO GENERATOR PLANT MODEL 4BH-FM

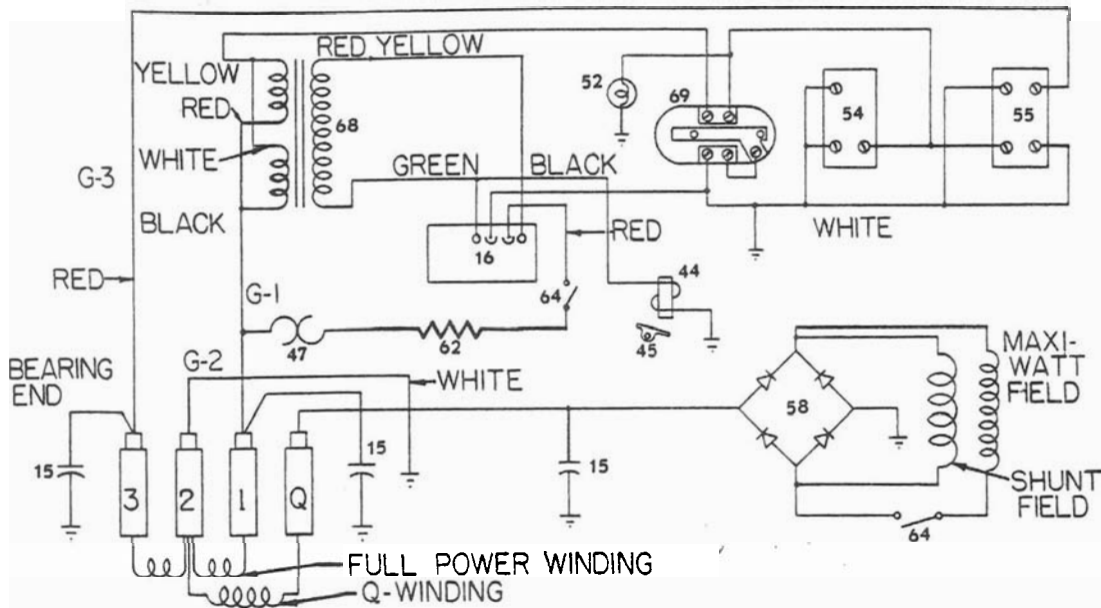


Manufactured by

**WINCO**

Division of Dyna Technology, Inc.

East Seventh at Division / P. O. Box 3263 / Phone (712) 252-1821 / SIOUX CITY, IOWA 51102



## PARTS LIST

Part No.	DESCRIPTION	Quantity	Ref No.	Part No.	DESCRIPTION	Quantity
1	458 Field Shell Stud Nut (5/16-18)	4	47	49417	Thermostat	1
2	480 Stud Nut Lockwasher (5/16")	4	48	49374	Bracket & Magnet Assembly Complete	1
3	24211-1 End Bracket	1	49	44341-1	Dome Only	1
4	51490-1 Armature	1	50	43358	Bulb	1
6	46911 Bearing	1	51	43341	Socket & Dome	1
7	40746 Screw—A. C. Brush (#8-32x5/16")	18	52	43340	Socket Assembly	1
8	24981 A. C. Brush	9	53	51576	Brace	2
9	23500-2 Brush Holder	9	54	49051	Receptacle 115 Volt	1
10	23451 Field Shell Stud	4	55	22902	Receptacle 230 Volt	1
11	43971 Field Shell & Bracket	1	56	6372	Hex Nut (10-32)	1
12	43972 Pole Shoe	2	57	21975	Lockwasher #10 Ext.	1
13	50471 Brush Rack Half	1	58	49484	Rectifier	1
14	51662-1 Field Coil	1	59	598	Flatwasher #10	1
15	41221 A. C. Condenser	3	60	51696-1	Weather Strip	2
16	48574 Module for Conservor	1	61	1376	Shoulder Washer	2
17	21976 Lockwasher (#8 Ext.)	2	62	48583	Resistor	1
18	6402 Screw (8-32x3/8")	2	63	24864	Machine Screw	1
19	50237 Bracket-Module	1	64	44022	Switch	2
20	21977 Machine Screw-Brush Holders (8-32x2 1/4")	6	65	51580	Box Cover	1
21	23404 Fan	1	66	51596	Front Panel	1
22	23634 End Cover	1	67	51573	Saddle	1
23	23605 Armature Nut (5/16-24)	1	68	40450	Transformer	1
24	480 Armature Lockwasher (5/16")	1	69	24749	Receptacle 115 Volt Duplex	1
25	23558 Flat Washer	5	70	51577	Bottom Support	2
26	23197-9 Armature Thru Bolt	1	71	51685	Side Panel—(right)	1
27	40552 Fan Lockwasher	1	72	51589	Side Panel—(left)	1
29	3728 Screw-Brush Rack Mounting (#10-24x1 1/2")	4	73	21698	Sheet Metal Screw (#10x3/8")	30
30	484 Lockwasher-Brush Rack Mounting (#10)	4	74	51606	Rear Cover	1
31	456 Nut-Brush Rack Mounting (#10-24)	4	75	44926	Bracket-Electro Magnet	1
32	43973 Pole Shoe Retainer	2	76	23754	Sub Frame	1
34	6402 Machine Screw-Capacitor (8-32x3/8")	3	78	480	Lockwasher 5/16	5
35	40994 Brush Rack Half	1	79	458	Hex Nut 5/16-18	4
37	399 Pole Shoe Screw (Hex 3/8-16x1 3/4")	4	81	23623	Rubber Shock Mounting (With Cradle)	4
39	51662 Field Coil	1	82	20952	Rubber Foot (Without Cradle)	4
40	23604 Allen Screw	4	83	23760	Flat Washer	1
41	44948 Acorn Nut (5/16-24)	1	84	580	Cap Screw (5/16-18x1 1/4")	4
42	44894 Hex Jam Nut (5/16-24)	2	85	20561	Spacer	1
43	44891 Cover	1	86	468	Cap Screw (5/16x18x1 1/2")	1
44	44889 Electro Magnet	1	87	446	Hex Nut (5/16-24)	8
45	44892 Bracket-Throttle Lever	1	88	24187	Spacer	4
46	45222 Bracket-Cover Thermostat	1	89	49531	Machine Screw (4-40x1 1/4")	2

Any parts required for gas engine portion of the unit should be obtained from the local engine manufacturer's service station.