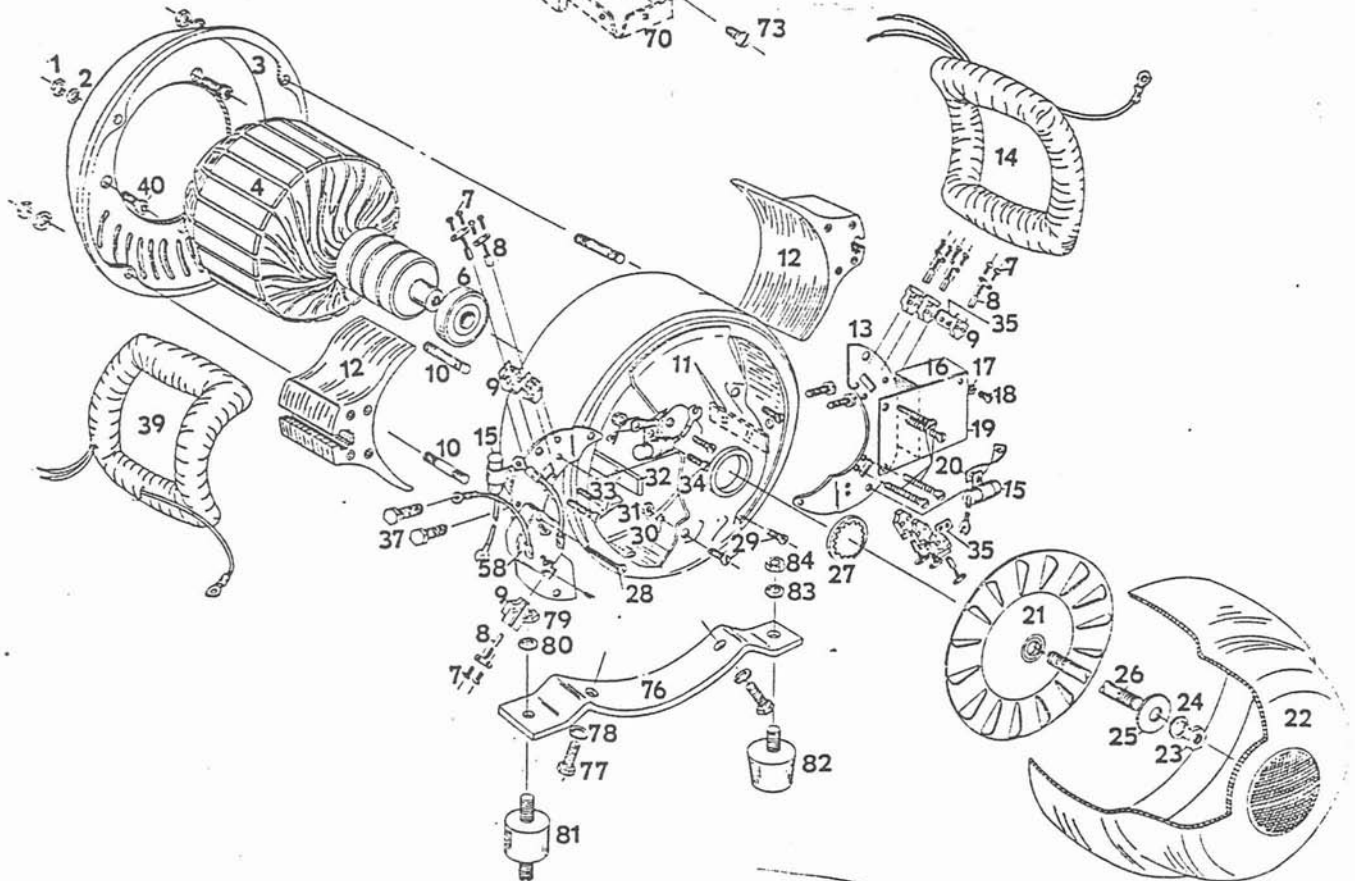
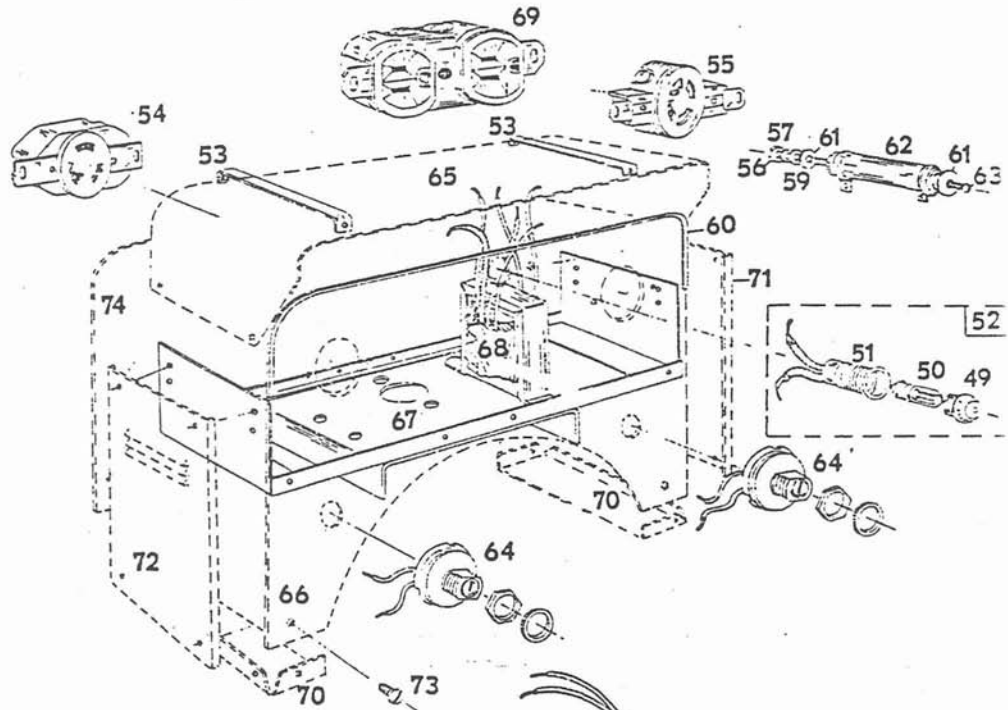
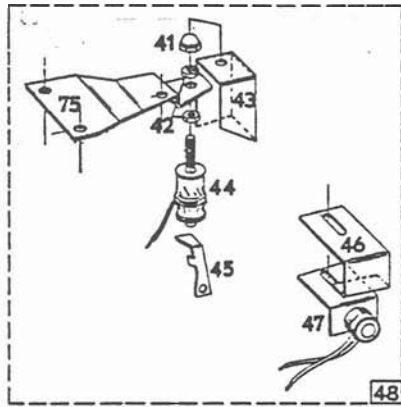


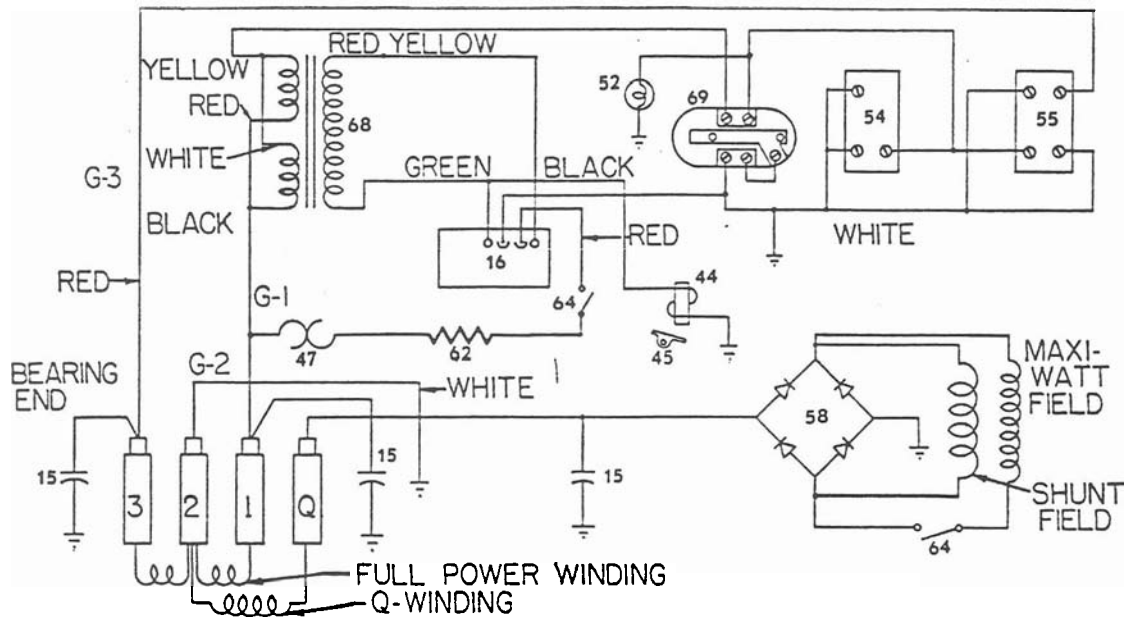
WINCO GENERATOR PLANT MODEL 3BH-FM



Manufactured by

WINCO

Division of Dyna Technology, Inc.



PARTS LIST

Ref. No.	Part No.	DESCRIPTION	Quantity	Ref. No.	Part No.	DESCRIPTION	Quantity
1	458	Field Shell Stud Nut (5/16-18)	4	43	44891	Cover	1
2	480	Stud Nut Lockwasher (5/16")	4	44	44889	Electro Magnet	1
3	43332-1	End Bracket	1	45	44892	Bracket—Throttle Lever	1
4	51570-1	Armature	1	46	44883	Bracket—Cover Thermostat	1
6	4783	Bearing	1	47	44945	Thermostat	1
7	40746	Screw—A.C. Brush (#8-32x5/16")	18	48	49375	Bracket & Magnet Assembly Complete	1
8	23607	A. C. Brush	9	49	43341-1	Dome Only	1
9	23500	Brush Holder—A.C.	9	50	43358	Bulb	1
10	23451	Field Shell Stud	4	51	43341	Socket & Dome	1
11	43327	Field Shell & Bracket	1	52	43340	Socket Assembly	1
12	24851	Pole Shoe	2	53	51576	Brace	2
13	50471	Brush Rack	2	54	22901	Receptacle 115 Volt	1
14	51712-1	Field Coil	1	55	22902	Receptacle 230 Volt	1
15	41221	A. C. Condenser	3	56	6372	Hex Nut (10-32)	1
16	48574	Module for Conserver	1	57	21975	Lockwasher #10 Ext.	1
17	21976	Lockwasher (#8 Ext.)	2	58	59484	Rectifier	1
18	6402	Screw (8-32x3/8")	2	59	598	Flatwasher #10	1
19	50237	Bracket—Module	1	60	51696-1	Weather Strip	2
20	40550	Machine Screw—Brush Holders (8-32x2")	4	61	1376	Shoulder Washer	2
21	23404	Fan	1	62	48583	Resistor	1
22	23634	End Cover	1	63	24864	Machine Screw	1
23	23605	Armature Nut (5/16-24)	1	64	44022	Switch	2
24	480	Armature Lockwasher (5/16")	1	65	51580	Box Cover	1
25	23558	Armature Flat Washer	1	66	51598	Front Panel	1
26	23197	Armature Thru Bolt	1	67	51582	Saddle	1
27	40552	Fan Lockwasher	1	68	40450	Transformer	1
28	49531	Machine Screw (4-40x1 1/4")	2	69	24749	Receptacle 115 Volt Duplex	1
29	3728	Screw—Brush Rack Mounting (#10 1/2")	4	70	51577	Bottom Support	2
30	484	Lockwasher—Brush Rack Mounting (#10)	4	71	51686	Side Panel (Right)	1
31	456	Nut—Brush Rack Mounting (#10-24)	4	72	51578	Side Panel (Left)	1
32	24849	Pole Shoe Retainer	2	73	21698	Sheet Metal Screw (#10x3/8")	30
33	10846	Machine Screw—Brush Holders (#8-32x1 1/2")	2	74	51608	Rear Cover	1
34	6402	Machine Screw—Capacitor (8-32x3/8")	1	75	44927	Bracket—Electro Magnet	1
35	23532	Spacer	2	76	43291	Generator Support Bracket	1
37	9416	Pole Shoe Screw (Hex 5/16-18x1 3/4")	4	77	467	Cap Screw 5/16-18x3/4	2
39	51712	Field Coil	1	78	480	Lockwasher 5/16	2
40	23597	Allen Screw	4	79	458	Hex Nut 5/16-18	8
41	44948	Acorn Nut (5/16-24)	1	80	480	Lockwasher 5/16	8
42	44894	Hex Jam Nut (5/16-24)	2	81	23623	Rubber Shock Mounting (With Cradle)	4
				82	23770	Rubber Foot (Without Cradle)	4
				83	480	Lock Washer 5/16	4
				84	446	Hex Nut 5/16-24	4

Any parts required for gas engine portion of the unit should be obtained from the local engine manufacturer's service station.