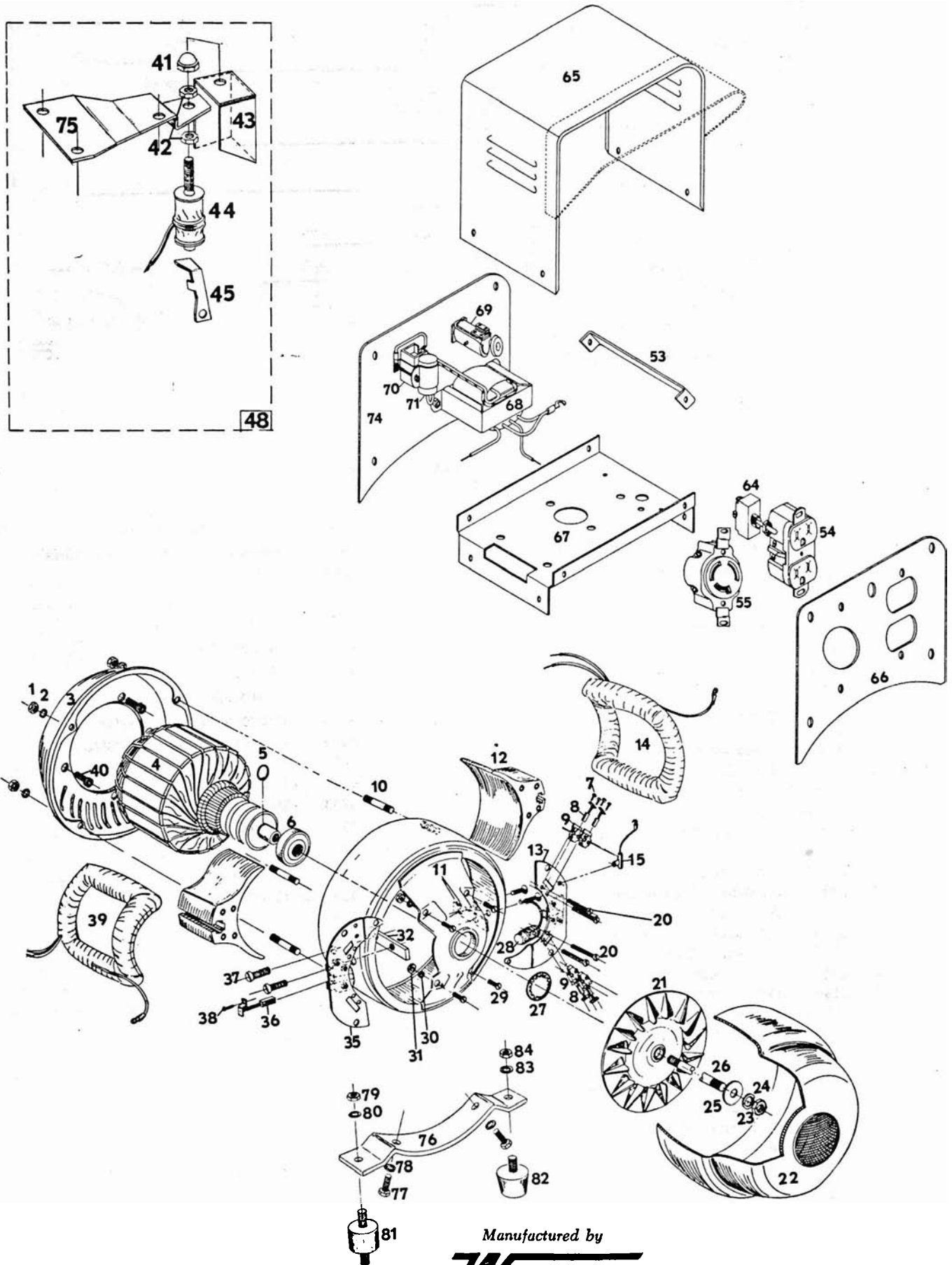


WINCO GENERATOR PLANT MODEL 205BH-1M

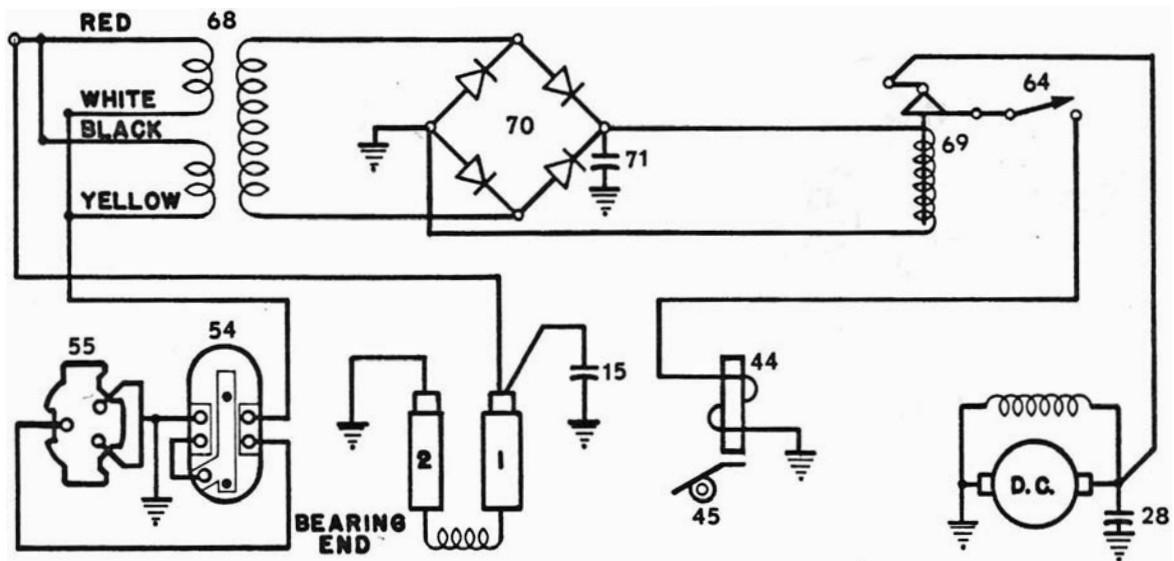


RPL NO. 589

Manufactured by
WINCO

Division of Dyna Technology, Inc.

905 Smith CORDOVA I.E. CENTER MINNESOTA 56057 612 357 6821



PARTS LIST

Ref. No.	Part No.	DESCRIPTION	Quantity	Ref. No.	Part No.	DESCRIPTION	Quantity
1	458	Field Shell Stud Nut (5/16-18)	4	38	4637	Screw—D.C. Brush (#10-24x3/8")	4
2	480	Stud Nut Lock washer (5/16")	4	39	24253	Field Coil	1
3	43332-1	End Bracket	1	40	23597	Allen Screw	4
4	24297-1	Armature	1	41	44948	Acorn Nut (5/16-24)	1
5	23568	Bearing Retaining Ring	1	42	44894	Hex Jam Nut (5/16x24)	2
6	46911	Bearing	1	43	44891	Cover	1
7	40746	Screw—A.C. Brush (#8-32x5/16")	8	44	44889	Electro Magnet	1
8	23607	A.C. Brush	4	45	44892	Bracket—Throttle Lever	1
9	23500	Brush Holder—A.C.	4	48	45164	Bracket & Magnet Assembly Complete	1
10	23451	Field Shell Stud	4	53	24087	Brace—Control Box	2
11	43327	Field Shell & Bracket	1	54	24749	Receptacle 115 Volt Duplex	1
12	24851	Pole Shoe	2	55	22901	Receptacle 115 Volt Single	1
13	41744-1	Brush Rack & D.C. Brush Holder	1	64	24238	Switch	1
14	24253-1	Field Coil	1	65	48355	Box Cover	1
15	41221	A.C. Condenser	1	66	43394-3	Front Panel	1
21	23404	Fan	1	67	23849-1	Saddle	1
22	23634	End Cover	1	68	40450	Transformer	1
23	23605	Armature Nut (5/16-24)	1	69	40595	Relay	1
24	480	Armature Lockwasher (5/16")	1	70	42277	Rectifier	1
25	23558	Armature Flat Washer	1	71	41172	Condenser	1
26	23197	Armature Thru Bolt	1	74	43399	Rear Cover	1
27	40552	Fan Lockwasher	1	75	44927	Bracket—Electro Magnet	1
28	41180	D.C. Condenser	1	76	43291	Generator Support Bracket	1
29	3728	Screw—Brush Rack Mounting (#10-24x1/2")	4	77	467	Cap Screw 5/16-18x3/4	2
30	484	Lockwasher—Brush Rack Mounting (#10)	4	78	480	Lockwasher 5/16	2
31	456	Nut—Brush Rack Mounting (#10-24)	4	79	458	Hex Nut 5/16-18	8
32	24849	Pole Shoe Retainer	2	80	480	Lockwasher 5/16	8
33	10846	Machine Screw—Brush Holders (#8-32x1 1/2")	4	81	23623	Rubber Shock Mounting (With Cradle)	4
35	41744	Brush Rack & D.C. Brush Holder	1	82	23770	Rubber Foot (Without Cradle)	4
36	41393	D.C. Brush	2	83	480	Lockwasher 5/16	4
37	9416	Pole Shoe Screw (Hex 5/16-18x1 3/4")	4	84	446	Hex Nut 5/16-24	4

Any parts required for gas engine portion of the unit should be obtained from the local engine manufacturer's service station.